

- SHEET NOTES
- A. SEE SHEET E001 FOR ADDITIONAL GENERAL NOTES.

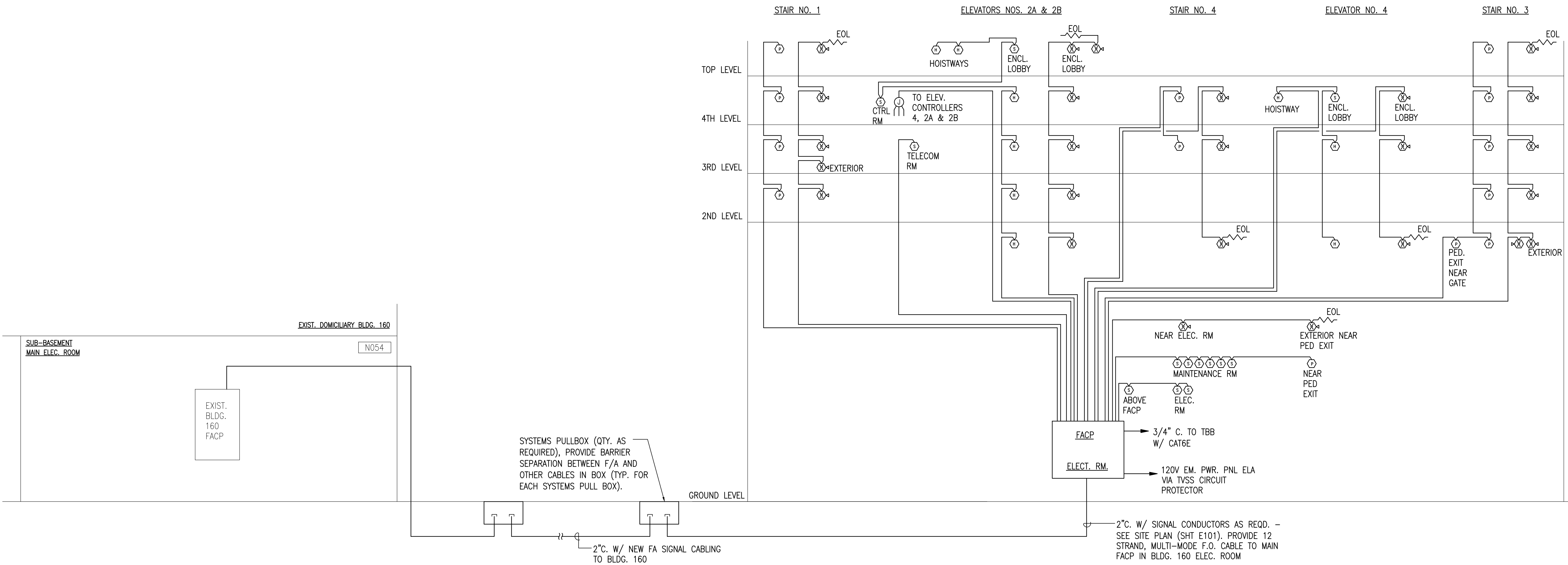
B. FACP AND DEVICES SHALL BE 100% COMPATIBLE WITH EXISTING CAMPUS F/A SYSTEM.

C. FACP SHALL BE SIZED TO ACCOMMODATE ALL DEVICES SHOWN, REGARDLESS OF BID ALTERNATE.

D. CONTRACTOR SHALL PROVIDE BATTERY CALCULATION AND FLOOR PLANS WITH SUBMITTAL CAPACITY FOR FUTURE DEVICES SHALL BE PROVIDED AS INDICATED IN SPECS.

E. ALL DEVICES IN NON-AIR-CONDITIONED AREAS SHALL BE WP AND RATED FOR THE ENVIRONMENT.

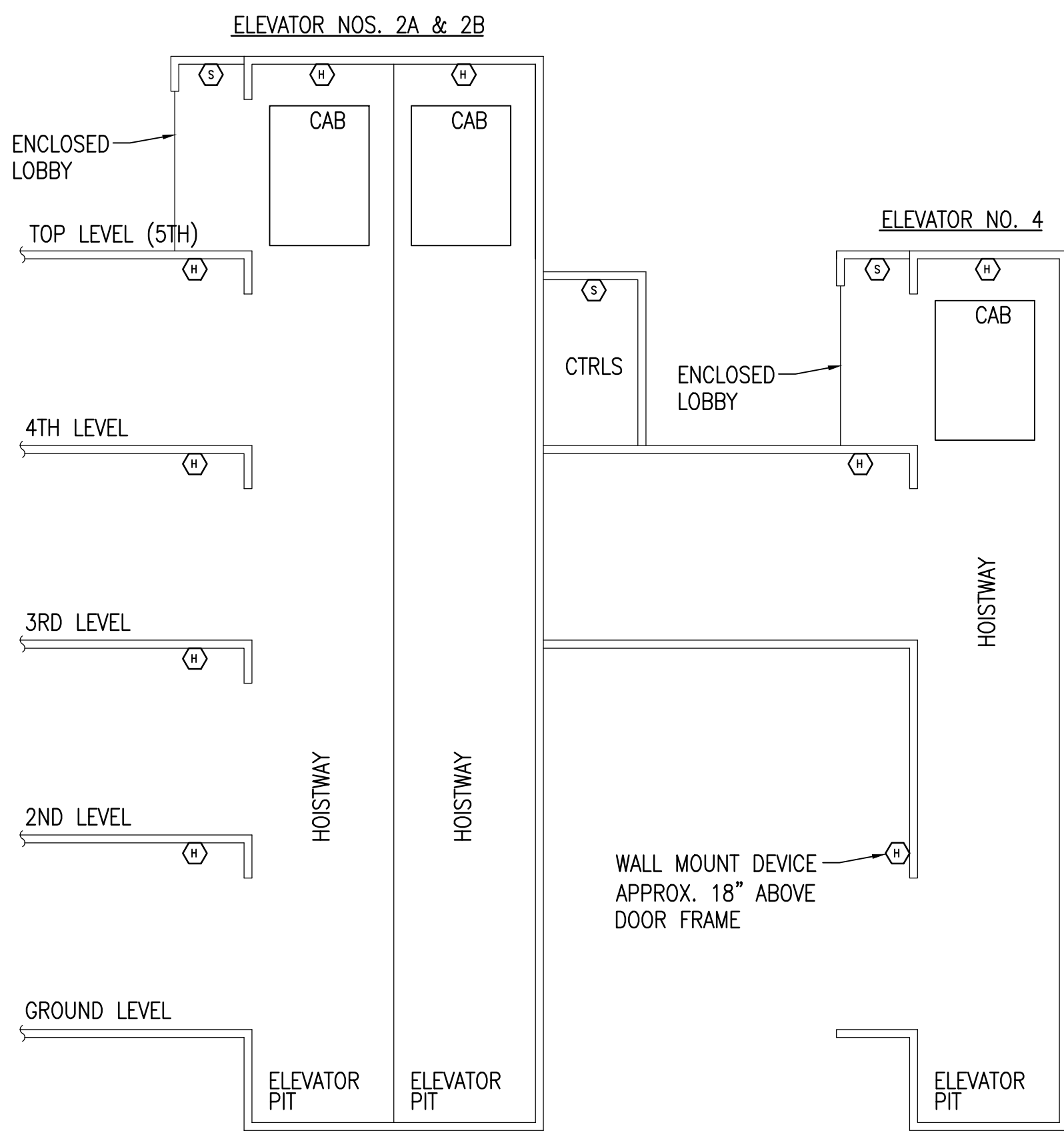
F. THIS IS A NON-SPRINKLERED FACILITY.



1

FIRE ALARM DETECTION SYSTEM RISER DIAGRAM

N.T.S.



ELEVATOR RECALL NOTES:

EACH ELEVATOR LOBBY, HOISTWAY, AND ELEVATOR CONTROL ROOM DETECTOR SHALL, WHEN ACTUATED, INITIATE FIRE FIGHTERS ELEVATOR RECALL SERVICE, IN ACCORDANCE WITH ANSI A17.1, SAFETY CODE FOR ELEVATORS AND ESCALATORS (FOR A NON-SPRINKLERED FACILITY).

2

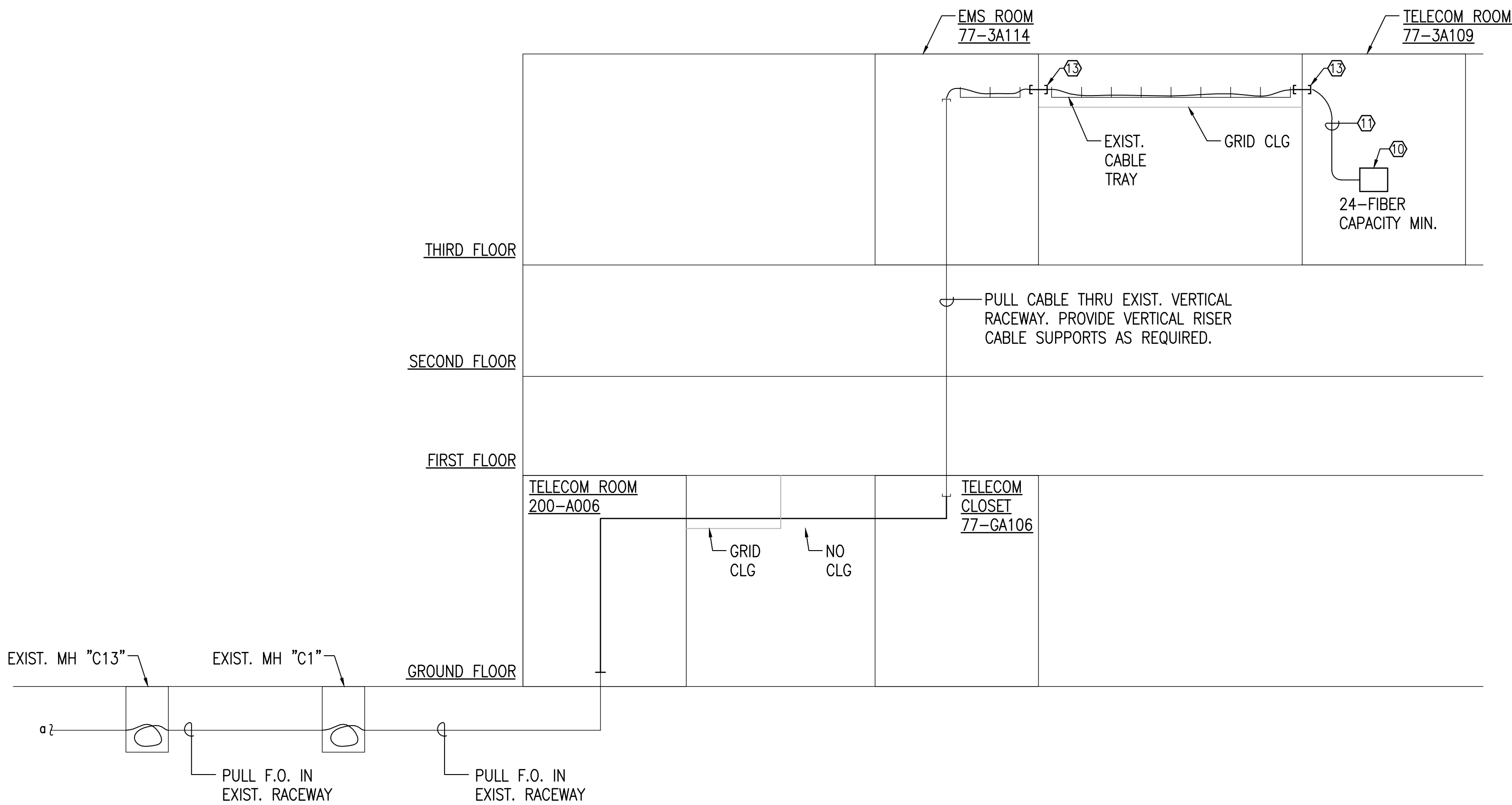
ELEVATOR RECALL DIAGRAM

N.T.S.

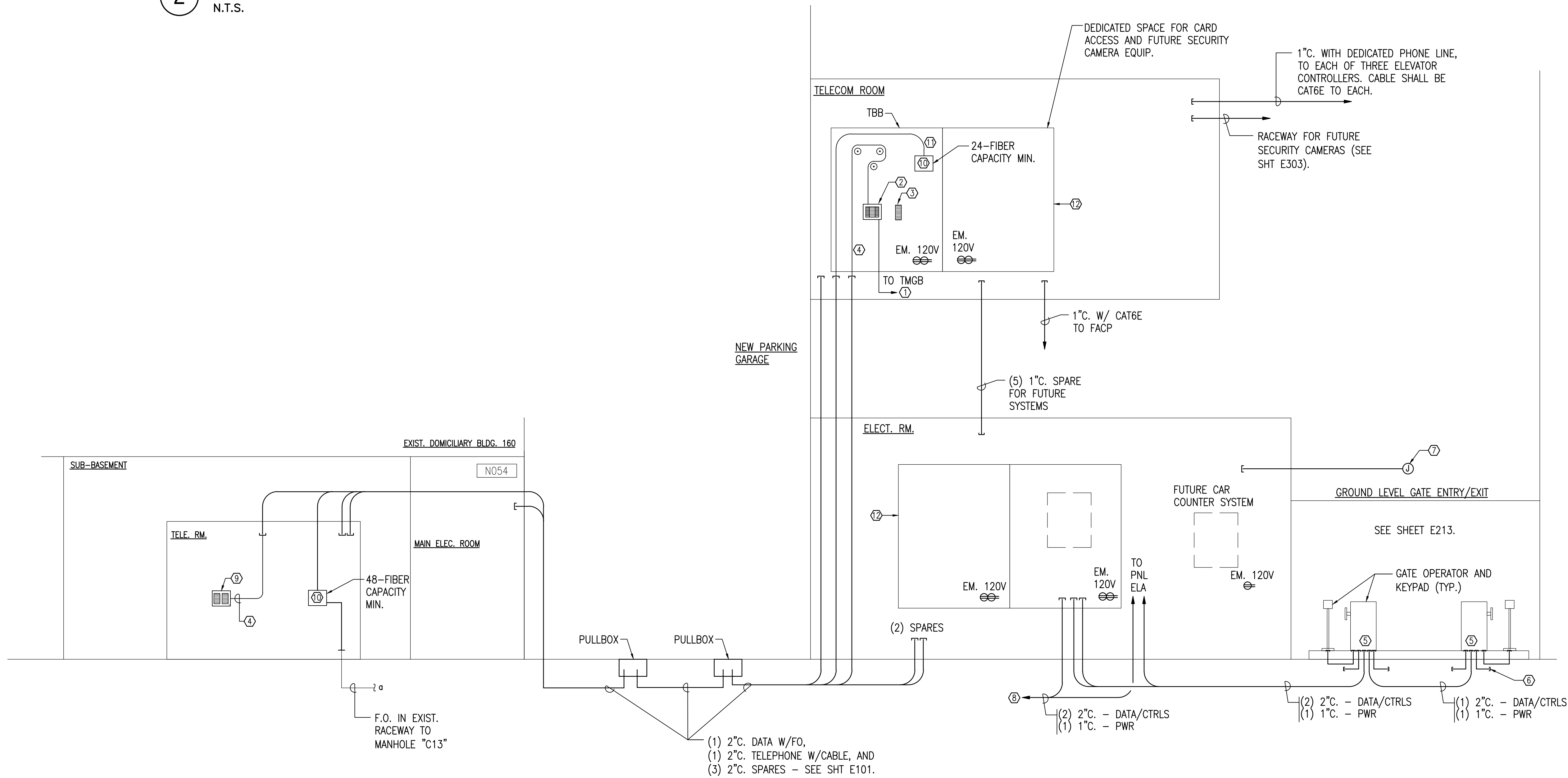
FINAL CONSTRUCTION DRAWINGS

APPROVED FOR CONSTRUCTION

<div>Dwg. File</div> <div></div>	<div>ARCHITECT/ENGINEERS:</div> <div><div>AKEA INC.</div><div>3603 NW 98TH ST., SUITE B GAINESVILLE, FLORIDA 32606 PH: (352) 474-6124 FAX: (352) 474-6324 CERT OF AUTH: FL #26693 EXPIRES: 02/28/2017</div></div>	<div>Chad J. Frelick, PE Florida Reg. 73811</div> <div>AKEA, INC. SEAL</div>	<div>CONSULTANTS:</div> <div><div><div>WALKER PARKING CONSULTANTS</div><div>4904 Eisenhower Blvd Suite 150 Tampa, FL 33634 813.888.5900 Ph 813.888.5825 Fax BE-0003840 www.walkerparking.com</div><div><div>FRANK DAUCHTRY architect</div><div>200 E. Government Street Suite 240-A Pensacola, FL 32502 Voice 850-433-3023 Fax 850-433-3025 Email frank@frankda.com</div></div></div></div>	<div>Approved:</div> <div><div>Asst. Chief, Engineering Service</div><div>Engineering Bldg. Maint. Foreman</div><div>Engineering Operation Foreman</div><div>Engineering Health &amp; Safety</div><div>Engineering Planning &amp; Analysis</div><div>C.O.T.R.</div></div>	<div>Drawing Title</div> <div>FIRE ALARM RISER AND ELEVATOR RECALL DIAGRAMS</div> <div><div>Approved: Chief, Engineering Service</div><div>Approved: Service Chief</div></div>	<div>Project Title</div> <div>CONSTRUCT 525 SPACE PARKING GARAGE</div> <div><div>CONTRACT No. VA249-14-C-0150</div><div>P.O. No. 621C40254</div></div> <div><div>Building Number</div><div>160</div><div>Checked</div><div>CJF</div><div>Drawn</div><div>KLL</div></div> <div><div>Location</div><div>VAMC MOUNTAIN HOME, TENNESSEE</div></div>	<div>Date</div> <div>MARCH 26, 2015</div> <div><div>Project No.</div><div>621-330</div></div> <div><div>DRAWING NO.</div><div>E301</div><div>Page 121 of 131</div></div>	<div>Department of Veterans Affairs</div>
----------------------------------	---	--	---	---	--	---	--	---



2 PARTIAL RISER DIAGRAM - DATA  
N.T.S.



1 PARTIAL RISER DIAGRAM - TELECOM, SECURITY, CARD ACCESS AND COUNTER SYSTEM  
N.T.S.

## SHEET NOTES

- SEE SHEET E001 FOR ADDITIONAL GENERAL NOTES.
- ALL RACEWAY STUB UPS IN ELECTRICAL AND TELECOM ROOMS SHALL BE LABELED TO IDENTIFY THE CONTENTS AND THE TERMINATION POINT OF THE CONDUIT RUN. LABELS SHALL BE ADHESIVE VINYL OR SIMILARLY DURABLE.
- FIRE ALARM RACEWAY IS NOT DEPICTED ON THIS SHEET. REFER TO SITE PLANS FOR TOTAL DUCT BANK RACEWAY QUANTITIES.
- CAT6E CABLE TERMINATIONS SHALL COMPLY WITH VA'S 568A CONFIGURATION.
- CONTRACTOR SHALL PROVIDE PULLBOXES AS REQUIRED TO ACCOMPLISH PULLS. PLANS AND RISERS DO NOT DEPICT ALL REQUIRED PULLBOXES.
- REFER TO STRUCTURAL SHEETS FOR DISTANCES BETWEEN FLOORS.

## SHEET KEYNOTES

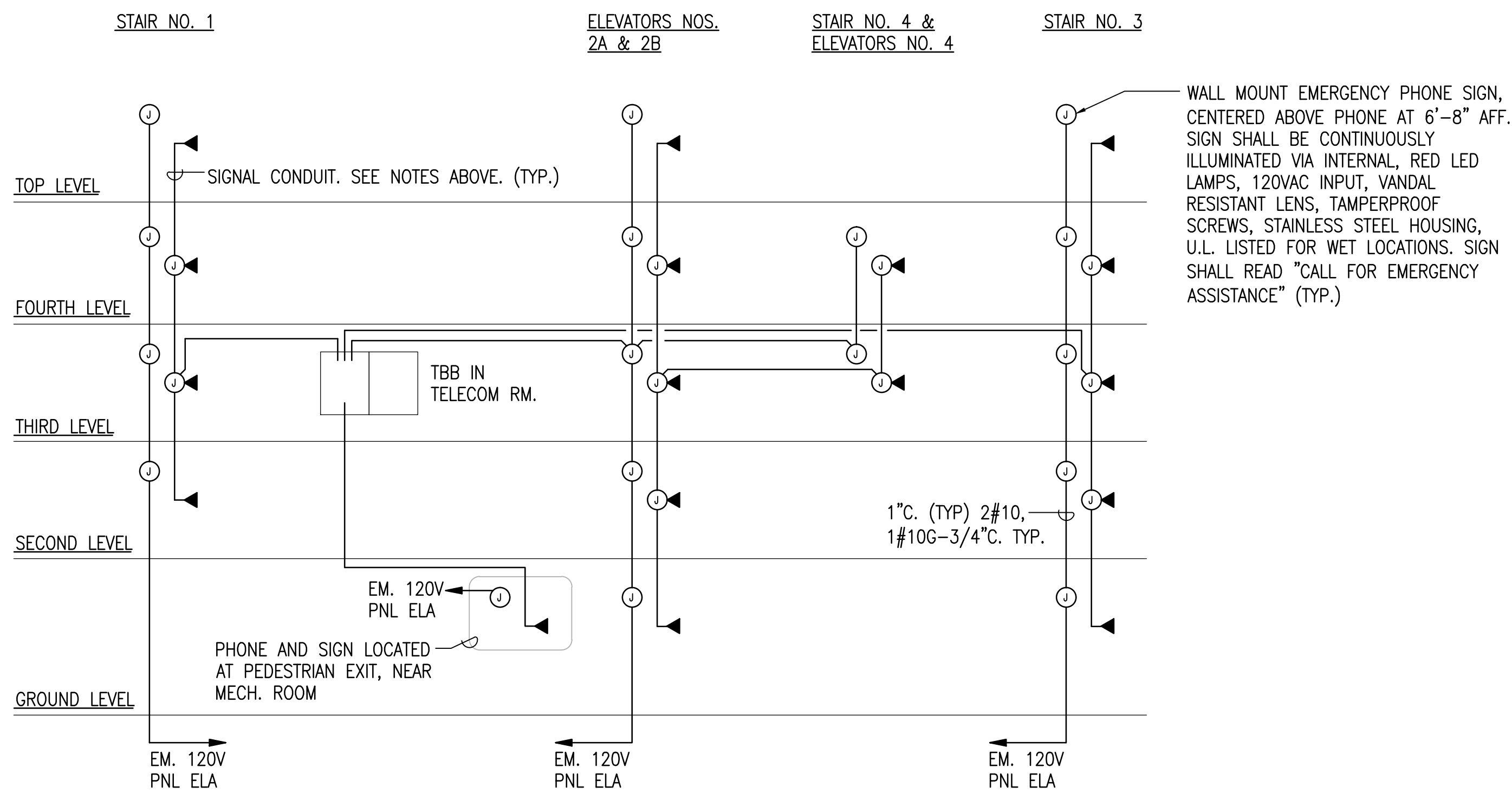
- PROVIDE 1/4"x3"x18"L CU GND. BUS BAR W/ INSULATED STANDOFFS, WALL MTD. 18" AFF (TMGB).
- PROVIDE PROTECTED ENTRANCE TERMINALS W/ SURGE PROTECTION MODULES AND CAT-6 110-STYLE BLOCKS FOR BACKBONE TERMINATION.
- PROVIDE CAT-6 110-STYLE BLOCKS FOR TERMINATING HORIZ. CABLING. PROVIDE CROSS CONNECT AS DIRECTED BY OWNER.
- PROVIDE ONE 50-PAIR, S/UTP, 24AWG SOLID STRAND, FILLED CORE (RUS PE-39) OUTSIDE PLANT TELECOM CABLE FROM BLDG. 160 TELE. ROOM TO GARAGE TBB. CABLE SHALL BE CAPABLE OF MEETING CAT3 STANDARDS UNDER CAT3 STANDARD CONDITIONS.
- TERMINATE CONDUIT FLUSH WITH FINISHED SLAB AT GATE LOCATIONS (SEE DETAIL 1, SHT E213).
- STUB 1" CONDUIT OUT FROM CONCRETE ISLAND, BELOW PAVEMENT FOR CONNECTION TO VEHICLE DETECTORS. SEE DETAIL ON E213 (TYP.)
- PROVIDE FLUSH MTD. J-BOX AND COVER PLATE OVER ENTRY LANE FOR FUTURE "LOT FULL" SIGN. ROUTE 3/4"C. BACK TO ELECTRICAL ROOM.
- PROVIDE RACEWAY TO SECOND LEVEL GATE ENTRY/EXIT ISLAND. SEE SHEET E213.
- PROVIDE LINE PROTECTION MODULES FOR ALL NEW SIGNAL CONDUCTORS.
- CONTRACTOR SHALL TERMINATE ALL FIBERS. PROVIDE SURFACE-MOUNTED FIBER OPTIC TERMINATION CABINET WITH LOCKABLE DOOR. PROVIDE TYPE LC DUPLEX ADAPTER PANELS IN QUANTITIES AND TYPES AS REQUIRED TO TERMINATE ALL FIBERS (ORTRONICS, PANDUIT, OR EQUAL). PATCH CABLES TO BE PROVIDED BY VA.
- 1-COMPOSITE CABLE WITH 6-SINGLE (9µm) AND 18-MULTI-MODE (62.5µm/125µm) FIBERS, INDOOR/OUTDOOR RATED.
- 3/4"x4"x8" FR PAINTED PLYWD. BCKBD (TYP. OF 2 MOUNTED SIDE-BY-SIDE).
- PROVIDE NEW WALL PENETRATIONS AND SLEEVES. EXISTING SLEEVES MAY BE USED IF SPACE IS AVAILABLE.

FINAL CONSTRUCTION DRAWINGS  
APPROVED FOR CONSTRUCTION

Dwg. File	ARCHITECT/ENGINEERS:	Chad J. Frelick, PE Florida Reg. 73811	CONSULTANTS:	Approved:	Drawing Title	Project Title	Date
	<b>AKEA INC.</b> 3603 NW 98TH ST., SUITE B GAINESVILLE, FLORIDA 32606 PH: (352) 474-6124 FAX: (352) 474-6324 CERT OF AUTH: FL #26693 EXPIRES: 02/28/2017		<b>WALKER</b> PARKING CONSULTANTS 4904 Eisenhower Blvd Suite 150 Tampa, FL 33634 813.888.5800 Ph 813.888.5822 Fax BE-0003840 www.walkerparking.com	Asst. Chief, Engineering Service Engineering Bldg. Maint. Foreman Engineering Operation Foreman Engineering Health & Safety Engineering Planning & Analysis C.O.T.R.	<b>SYSTEMS RISER DIAGRAM</b>	<b>CONSTRUCT 525 SPACE PARKING GARAGE</b> CONTRACT No. VA249-14-C-0150 P.O. No. 621C40254	MARCH 26, 2015
Revisions		AKEA, INC.	SEAL		Approved: Chief, Engineering Service	Building Number <b>160</b>	Project No. <b>621-330</b>
					Approved: Service Chief	Checked CJF	DRAWING NO. <b>E302</b>
						Drawn KLL	Page 122 of 131
						Location VAMC MOUNTAIN HOME, TENNESSEE	

EMERGENCY PHONE NOTES:

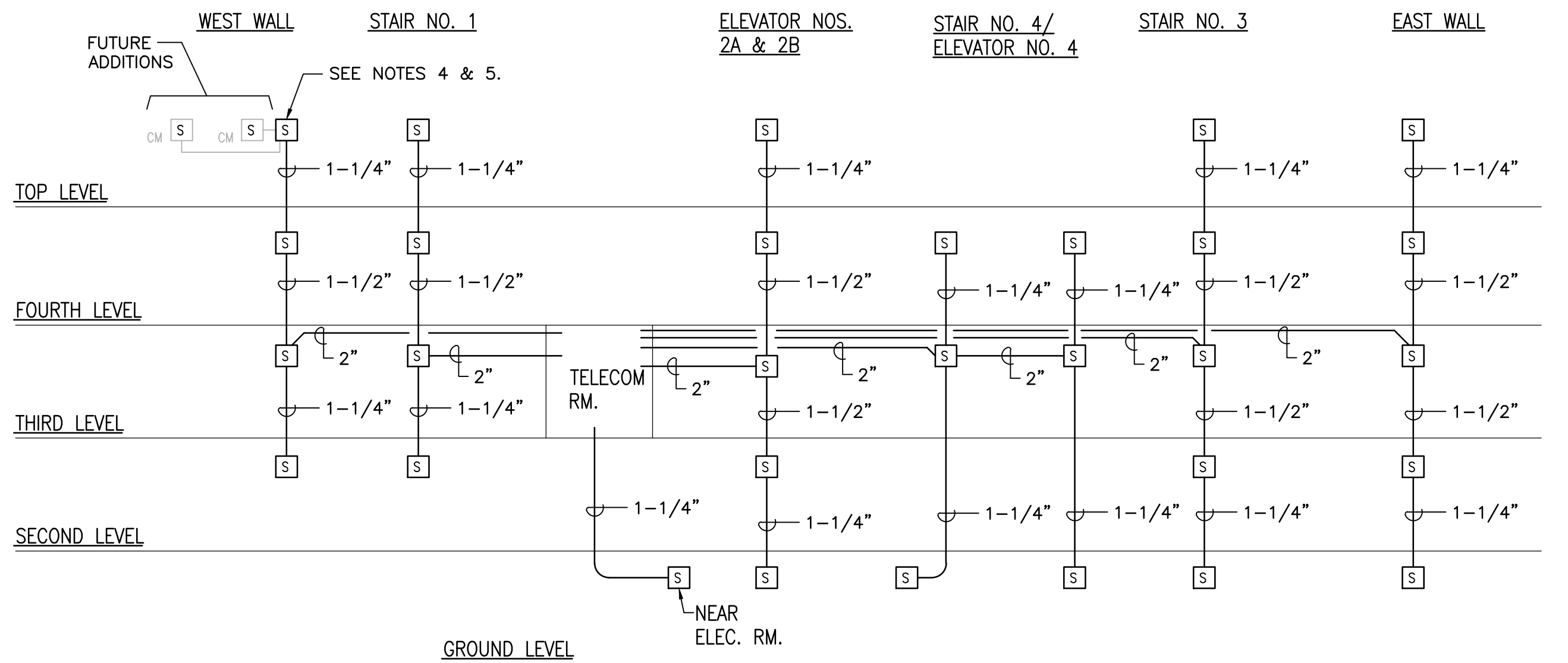
1. INSTALL EMERGENCY SPEAKER PHONES NEAR STAIR ENTRIES (AND ELEVATOR LANDING) ON EACH FLOOR, AS INDICATED ON FLOOR PLANS, SUCH THAT PUSH BUTTON IS LOCATED 48" AFF.
2. ROUTE ONE TWO-TWISTED-PAIR, 24 GAUGE, SHIELDED CABLE FROM THE SPEAKER PHONE IN EACH UNIT TO THE TBB IN THE TELECOM ROOM, 1-1/4"C. MIN.
3. PROVIDE ADDITIONAL SURGE PROTECTION FOR EACH PHONE LINE, AT THE BACKBOARD, BETWEEN THE PHONE AND THE DISTRIBUTION BLOCK.
4. ROUTE ONE SPARE CABLE TO ALL EMERGENCY PHONE UNITS LOCATED ON THE TOP LEVEL AND THE NORTH PORTION OF LEVEL 4.
5. PROVIDE ONE COMMON #12 GROUND WIRE IN ALL SIGNAL CONDUITS. TERMINATE ON TMGB AT BACKBOARD IN TELECOM ROOM.
6. ENCLOSURE SHALL BE DIE-CAST ALUMINUM WITH PUSH-BUTTON LATCH, GASKETED DOOR, YELLOW FINISH WITH RED "TELEPHONE" LOGO, BASIS OF DESIGN: ALLEN TEL PROD. #GB90H-04.
7. PHONE SHALL BE LINE-POWERED, VANDAL RESISTANT, BLACK FINISH, ALUMINUM FACE PLATE WITH HEAVY DUTY METAL CALL BUTTON AND MOUNTING GASKET. PHONE SHALL BE CONSTRUCTED FOR EXTERIOR LOCATIONS PRONE TO LOW TEMPERATURES, CONDENSATION AND OCCASIONAL WATER DROPS. BASIS OF DESIGN: VIKING #E-10A-EWP. PROVIDE MOUNTING PLATE (W/ BLACK FINISH) AS REQ'D TO MOUNT PHONE IN ENCLOSURE.



1 EMERGENCY TELEPHONE RISER DIAGRAM  
N.T.S.

SECURITY RACEWAY NOTES:

1. QUANTITY OF CONDUITS ARE INDICATED IN PARENTHESES.
2. U.N.O., ALL SECURITY RACEWAY CONDUITS ARE 1-1/4" TRADE SIZE MINIMUM.
3. PROVIDE CONDUIT WITH PULLSTRING. CONDUITS SHALL ROUTE TO TELECOM ROOM IN SHORTEST ROUTE POSSIBLE.
4. THE DESIGN INTENT IS TO PROVIDE SECURITY JUNCTION BOXES AT SELECT LOCATIONS IN THE GARAGE, TO ENABLE FUTURE INSTALLATION OF CAMERAS. EACH SECURITY JUNCTION BOX SHALL BE PROVIDED WITH THE CAPABILITY OF ACCEPTING (4) FUTURE 3/4" CONDUITS, FOR FUTURE CAMERA INSTALLATION. (TYP.)
5. SECURITY JUNCTION BOX SHALL BE WP. (TYP.)
6. PROVIDE PULL BOXES AFTER EVERY 180' CUMULATIVE CHANGE IN DIRECTION.
7. STUB CONDUIT OUT INTO TELECOM ROOM, PROVIDE 6" CONDUIT IN ROOM. PROVIDE TEMPORARY CAP ON EACH CONDUIT TO PREVENT ACCUMULATION OF DEBRIS. LABEL CONDUITS.
8. PENETRATIONS SHALL NOT BE MADE THROUGH THE TOPS OF SECURITY JUNCTION BOXES. DIAGRAM BELOW IS A SCHEMATIC REPRESENTATION.



2 SECURITY RACEWAY RISER DIAGRAM  
N.T.S.

SHEET NOTES

- A. SEE SHEET E001 FOR ADDITIONAL GENERAL NOTES.
- B. PROTECT VERTICAL CONDUIT RISERS. SEE DETAIL 6, SHEET E401.
- C. CONDUITS SHALL NOT BE ROUTED THROUGH EXPANSION JOINTS.
- D. PENETRATIONS SHALL NOT BE MADE THROUGH THE TOPS OF BOXES OR ENCLOSURES.
- E. ALL RACEWAY STUB UPS IN ELECTRICAL AND TELECOM ROOMS SHALL BE LABELED TO INDICATE THE TERMINATION POINT OF THE CONDUIT RUN. LABELS SHALL BE ADHESIVE VINYL OR SIMILARLY DURABLE.
- F. REFER TO STRUCTURAL SHEETS FOR DISTANCES BETWEEN FLOORS.

FINAL CONSTRUCTION DRAWINGS  
APPROVED FOR CONSTRUCTION

Dwg. File	ARCHITECT/ENGINEERS:	Chad J. Frelick, PE Florida Reg. 73811	CONSULTANTS:	Approved:	Drawing Title	Project Title	Date
	<b>AKEA INC.</b> 3603 NW 98TH ST., SUITE B GAINESVILLE, FLORIDA 32606 PH: (352) 474-6124 FAX: (352) 474-6324 CERT OF AUTH: FL #26693 EXPIRES: 02/28/2017		<b>WALKER PARKING CONSULTANTS</b> 4904 Eisenhower Blvd Suite 150 Tampa, FL 33634 813.888.5800 Ph 813.888.5822 Fax BE-0003840 www.walkerparking.com	Asst. Chief, Engineering Service Engineering Bldg. Maint. Foreman Engineering Operation Foreman Engineering Health & Safety Engineering Planning & Analysis C.O.T.R.	<b>SYSTEMS RISER DIAGRAMS</b>	<b>CONSTRUCT 525 SPACE PARKING GARAGE</b> CONTRACT No. VA249-14-C-0150 P.O. No. 621C40254	MARCH 26, 2015
Revisions		AKEA, INC.	SEAL		Approved: Chief, Engineering Service	Building Number 160	Project No. 621-330
Date					Approved: Service Chief	Checked CJF	DRAWING NO. <b>E303</b>
						Drawn KLL	Page 123 of 131
						Location VAMC MOUNTAIN HOME, TENNESSEE	

- A. SEE SHEET E001 FOR ADDITIONAL GENERAL NOTES.
- B. EMERGENCY BATTERIES SHALL BE PROVIDED WITH INVERTER AND SELF TEST DIAGNOSTIC FEATURE.
- C. FIXTURES AND BATTERIES MOUNTED IN NON-CONDITIONED AREAS SHALL BE RATED TO OPERATE IN TEMPERATURES RANGING FROM 0°F TO 100°F.

1. CONTRACTOR SHALL COORDINATE ANCHOR-BOLT PATTERN AND CONDUIT REQUIREMENTS WITH PRECASTER. SUBMIT DOCUMENTATION FROM PRECASTER TO CONFIRM COORDINATION HAS TAKEN PLACE.

LIGHTING FIXTURE SCHEDULE					
TYPE	BASIS OF DESIGN CATALOG NUMBER	LIGHT SOURCE	VOLTS	MTG.	DESCRIPTION
A	ACCULITE # PG2-A08-4K-UN-5-SL (*DL FIXTURES SHALL BE PROVIDED WITH "PG2PL" ACCESSORY)	84W LED (8,169 INIT. LUMENS, 4000°K CCT)	277	TRUNNION MTD.	LED PARKING GARAGE LIGHT FIXTURE. U.L. LISTED FOR WET LOCATION. TYPE V DISTRIBUTION (EXCEPT PROVIDE LENS OPTION FOR DL FIXTURES). PROVIDE INTEGRAL SURGE PROTECTION. TRUNNION MOUNTED SUCH THAT THE BOTTOM OF THE FIXTURE IS 1" ABOVE THE BOTTOM OF THE PRECAST ELEMENTS, AS DETAILED. LED FIXED ARRAY. DIE CAST ALUMINUM HOUSING. FACTORY APPLIED POWDER COAT ALUMINUM FINISH.
B	LUMINAIRE LED # VPF124-80W-VOLTAGE-CP-BRZ-WET-EMB722	80W LED (7880 LUMENS, 4000°K CCT)	277V & 120V	SURFACE (CEILING OR WALL, SEE PLAN)	STAIRTOWER/ELEVATOR LOBBY 4' FIXTURE. U.L. LISTED FOR WET LOCATIONS FOR WALL OR CEILING MOUNT. VANDAL RESISTANT. PROVIDE WITH GASKETING FOR WET LOCATION INSTALLATION. NOMINAL .156" THICK CLEAR PRISMATIC POLYCARBONATE LENS. TAMPERPROOF STAINLESS STEEL FASTENER SCREWS. EXTRUDED ALUMINUM HOUSING, DIE CAST ALUMINUM END CAPS. ADA COMPLIANT. INTEGRAL EMERGENCY BATTERY. BRONZE FINISH. ALL 277V EXCEPT FOR 120V FIXTURE LOCATED IN ELEV. 2 LOBBY.
C	GARDCO # 101L-4-35LA-CW-UNIV-BRP- SPR	35W LED (3,000 INIT. LUMENS, 5,700°K CCT, 75CRI)	277	WALL	STAIRTOWER/ENTRANCE FIXTURE. TRAPEZOIDAL SCONCE. U.L. LISTED FOR WET LOCATIONS. INTEGRAL SURGE PROTECTION PER SPECIFICATIONS. BRONZE FINISH. DIE CAST ALUMINUM HOUSING. MOUNT FIXTURE AT 8' ABOVE GRADE, FOR PEDESTRIAN ENTRANCES, U.N.O. BRONZE FINISH.
D	GARDCO # H19L-2-5-160LA-CW-UNIV- BRP-LF-SPR POLE: VALMONT # DSF10-S641A160	2 HEADS PER POLE, EACH HEAD: 160W LED (13,170 INIT. LUMENS, 5,700°K, 75CRI)	277	POLE	TOP LEVEL LED FIXTURE. U.L. LISTED FOR WET LOCATIONS. MOUNTED 19'-0" ABOVE DECK ON 15' HINGED POLE (POLE MOUNTED ON 4" CONCRETE WALL OR COLUMN EXTENSION). PROVIDE OWNER WITH ONE LOWERING WINCH. POLES ARE TO BE INTERNALLY COATED, STEEL, DARK BRONZE POWDER COAT FINISH. PROVIDE INTEGRAL SURGE PROTECTION AND IN POLE FUSE. POLES SHALL BE DESIGNED FOR HURRICANE FORCE WINDS AS REQUIRED BY LOCAL CODES, INCREASE POLE GAUGE IF NECESSARY. PROVIDE WIND CALCULATIONS TO ENGINEER FOR REVIEWS. PROVIDE FIXTURE WITH FLAT GLASS LENS, TYPE V DISTRIBUTION.
E	DAY-BRITE # DWAE-43L840-4-UNV	38W LED (4300 LUMENS, 80 CRI, 4000°K)	120	WALL	ELEVATOR PIT FIXTURE. UL WET LOCATION, IP67. 4' FIBERGLASS BODY, GASKETED LENS, NON-METALIC CAM LATCHES.
F	GARDCO # H19L-1-5-160LA-CW-UNIV- BRP-LF-SPR POLE: VALMONT # DSF10-S641A160	SAME AS TYPE D EXCEPT 1 HEAD PER POLE	277	POLE	SAME AS TYPE D EXCEPT 1 HEAD PER POLE.
G	HE WILLIAMS # 75L-4-LED*PH50/840-A12125- VBV-2-ED*PH-UNV	51W LED (4000°K, 80 CRI, 5000 LUMENS)	277V & 120V	SUSPENDED OR SURFACE	4' LED STRIP, ACRYLIC PRISMATIC LENS .125" THICK, DIE-FORMED STEEL HOUSING, WHITE FINISH. 277V EXCEPT FOR 120V FIXTURES LOCATED IN ELEVATOR CONTROL ROOM.
H	GARDCO # 101L-3-55LA-CW-UNV-BRP- SPR	55W LED (4,490 INIT. LUMENS, 5,700°K CCT, 75CRI)	277	SURFACE	GATE ENTRANCE FIXTURE. TRAPEZOIDAL SCONCE. U.L. LISTED FOR WET LOCATIONS. INTEGRAL SURGE PROTECTION PER SPECIFICATIONS. BRONZE FINISH. DIE CAST ALUMINUM HOUSING. FIXTURES MOUNTED TO COLUMNS SHALL NOT BE WIDER THAN THE COLUMNS THEY ARE MOUNTED TO.
I	NOT USED.				
J	HE WILLIAMS # 75L-4-LED*PH50/840-A12125- EM/BSL310-VBY-2-ED*PH-UNV	51W LED (4000°K, 80 CRI, 5000 LUMENS)	277	SUSPENDED OR SURFACE	4' LED STRIP, ACRYLIC PRISMATIC LENS .125" THICK, DIE-FORMED STEEL HOUSING, WHITE FINISH. PROVIDE FIXTURE WITH EMERGENCY DRIVER AND BATTERY.
EXIT	DAY-BRITE # ER60MLD1RB	MULTIPLE I.E.D.	277	WALL OR PENDANT (SEE PLAN)	EXIT SIGN FIXTURE. U.L. LISTED FOR WET LOCATION. VANDAL RESISTANT. SINGLE FACE. VANDAL RESISTANT. PROVIDE WITH DIRECTIONAL ARROWS AS INDICATED ON DRAWINGS. DIE CAST ALUMINUM HOUSING WITH POLYCARBONATE COVERS. TAMPERPROOF SCREWS. MAINTENANCE FREE SEALED Ni-Cad BATTERY. 5-YEAR PRODUCT WARRANTY. AUTOMATIC SELF-TEST FEATURE.
CALL FOR EMERGENCY ASSISTANCE SIGN	REFER TO SHEET E303, DETAIL 1.				

FINAL CONSTRUCTION DRAWINGS  
APPROVED FOR CONSTRUCTION

[illegible]

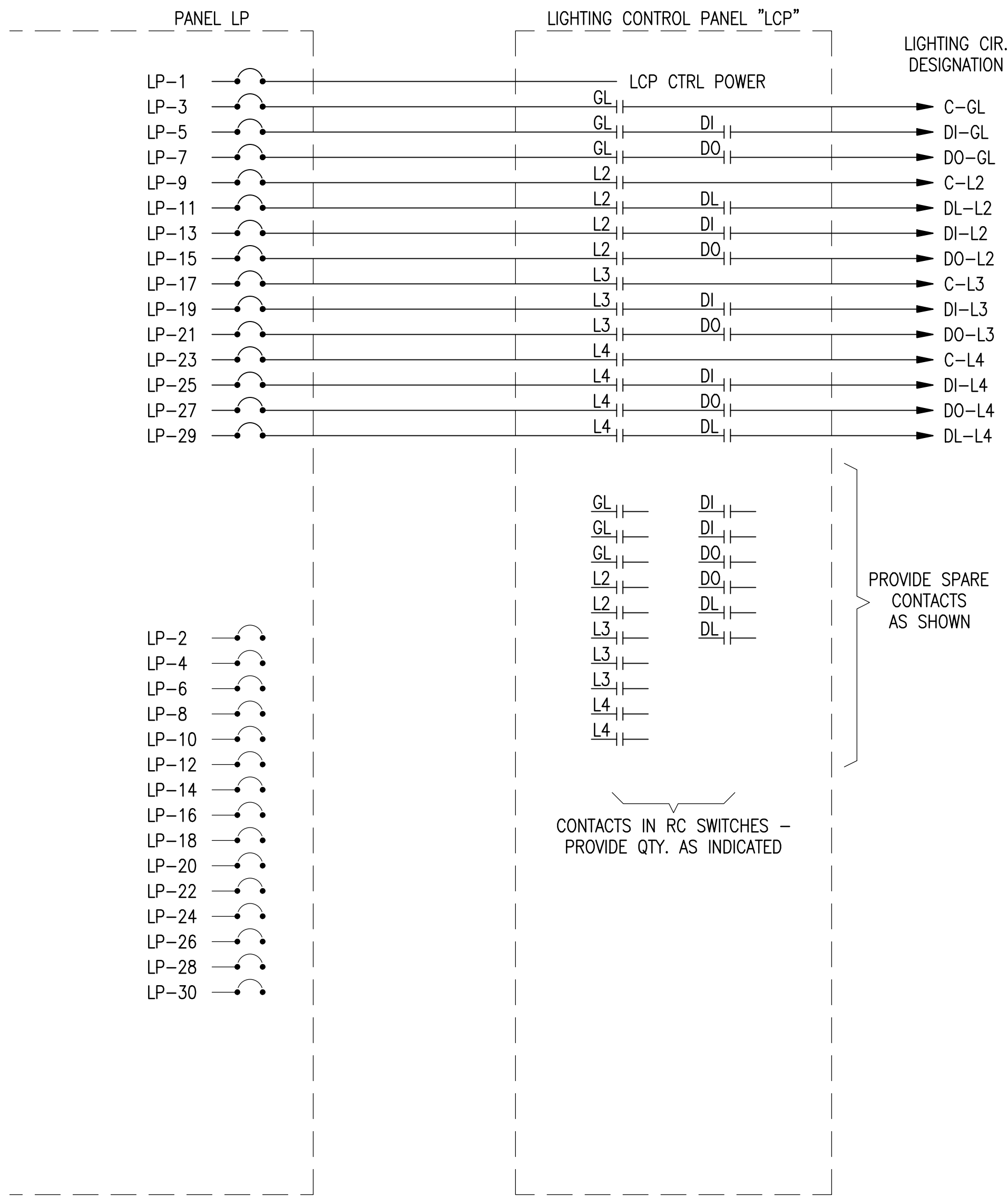


A. SEE SHEET E001 FOR ADDITIONAL GENERAL NOTES.

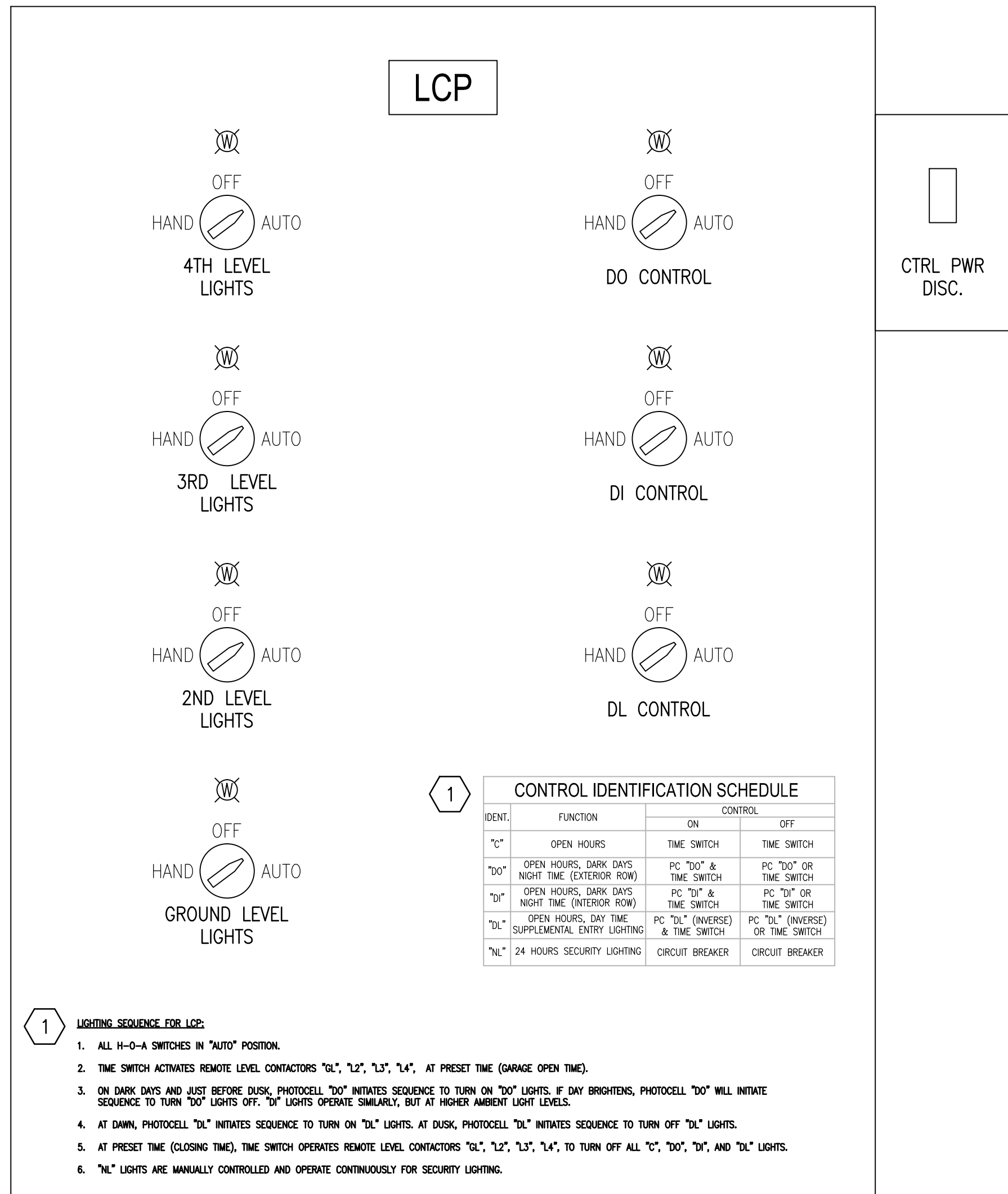
B. PROVIDE MIN. QUANTITY OF CONTACTS, H-O-A SWITCHES, RC SWITCHES, ETC. AS SHOWN, REGARDLESS OF BID ALTERNATE TAKEN. RENAME UN-USED FLOOR LEVEL RC SWITCHES AS SPARE IF ANY OF THE BID ALTERNATES ARE TAKEN.



Dwg. File           Revisions 	<b>ARCHITECT/ENGINEERS:</b>  <div style="text-align: center; font-size: 2em; font-weight: bold;">AKEA INC.</div> <div style="text-align: center;">             3603 NW 98TH ST., SUITE B              GAINESVILLE, FLORIDA 32606              PH: (352) 474-6124              FAX: (352) 474-6324              CERT OF AUTH: FL #26693              EXPIRES: 02/28/2017         </div>	Dwg. J. Fralick, PE Florida Reg. 73811  <div style="text-align: center;">AKEA, INC. SEAL</div>	<b>CONSULTANTS:</b>  <div style="display: flex; justify-content: space-around; align-items: center;"> <div style="text-align: center;">   <b>WALKER</b>              PARKING CONSULTANTS              4904 Eisenhower Blvd              Suite 150              Tampa, FL 33634              813.888.5800 Ph              813.888.5822 Fax              BE-0003840              www.walkerparking.com         </div> <div style="text-align: center;">   <b>FRANK DAUGHTRY</b>              architect              200 E. Government Street              Suite 240-A              Pensacola, FL 32502              Voice 850-433-3023              Fax 850-433-3025              Email frank@frankda.com         </div> </div>	<b>Approved:</b>  Asst. Chief, Engineering Service _____ Engineering Bldg. Maint. Foreman _____ Engineering Operation Foreman _____ Engineering Health & Safety _____ Engineering Planning & Analysis _____ C.O.T.R. _____	<b>Drawing Title</b>  <div style="text-align: center; font-size: 1.2em; font-weight: bold;">LIGHTING CONTROLS</div>	<b>Project Title</b>  <div style="text-align: center; font-size: 1.2em; font-weight: bold;">CONSTRUCT 525 SPACE PARKING GARAGE</div> <div style="display: flex; justify-content: space-between; font-size: 0.8em;">             CONTRACT No. VA249-14-C-0150             <span>P.O. No. 621C40254</span> </div>	<b>Date</b> <div style="text-align: center; font-weight: bold;">MARCH 26, 2015</div>
							<b>Project No.</b> <div style="text-align: center; font-weight: bold;">621-330</div>
						<div style="display: flex; justify-content: space-between; font-size: 0.8em;"> <div>Approved: Chief, Engineering Service</div> <div>Building Number <div style="text-align: center; font-weight: bold;">160</div></div> <div>Checked CJF</div> <div>Drawn KLL</div> </div>	<b>DRAWING NO.</b> <div style="text-align: center; font-size: 1.5em; font-weight: bold;">E401</div>
						<div style="display: flex; justify-content: space-between; font-size: 0.8em;"> <div>Approved: Service Chief</div> <div>Location YAMC MOUNTAIN HOME, TENNESSEE</div> </div>	<div style="text-align: center; font-size: 0.8em;">Page 125 of 131</div>



1 PARTIAL LIGHTING CONTROL PANEL WIRING DIAGRAM  
N.T.S.



2 LCP PANEL COVER  
N.T.S.

CONTROL IDENTIFICATION SCHEDULE			
IDENT.	FUNCTION	CONTROL	
		ON	OFF
"C"	OPEN HOURS	TIME SWITCH	TIME SWITCH
"DO"	OPEN HOURS, DARK DAYS NIGHT TIME (EXTERIOR ROW)	PC "DO" & TIME SWITCH	PC "DO" OR TIME SWITCH
"DI"	OPEN HOURS, DARK DAYS NIGHT TIME (INTERIOR ROW)	PC "DI" & TIME SWITCH	PC "DI" OR TIME SWITCH
"DL"	OPEN HOURS, DAY TIME SUPPLEMENTAL ENTRY LIGHTING	PC "DL" (INVERSE) & TIME SWITCH	PC "DL" (INVERSE) OR TIME SWITCH
"NL"	24 HOURS SECURITY LIGHTING	CIRCUIT BREAKER	CIRCUIT BREAKER

LIGHTING SEQUENCE FOR LCP:

- ALL H-O-A SWITCHES IN "AUTO" POSITION.
- TIME SWITCH ACTIVATES REMOTE LEVEL CONTACTORS "GL", "L2", "L3", "L4", AT PRESET TIME (GARAGE OPEN TIME).
- ON DARK DAYS AND JUST BEFORE DUSK, PHOTOCELL "DO" INITIATES SEQUENCE TO TURN ON "DO" LIGHTS. IF DAY BRIGHTENS, PHOTOCELL "DO" WILL INITIATE SEQUENCE TO TURN "DO" LIGHTS OFF. "DI" LIGHTS OPERATE SIMILARLY, BUT AT HIGHER AMBIENT LIGHT LEVELS.
- AT DAWN, PHOTOCELL "DL" INITIATES SEQUENCE TO TURN ON "DL" LIGHTS. AT DUSK, PHOTOCELL "DL" INITIATES SEQUENCE TO TURN OFF "DL" LIGHTS.
- AT PRESET TIME (CLOSING TIME), TIME SWITCH OPERATES REMOTE LEVEL CONTACTORS "GL", "L2", "L3", "L4", TO TURN OFF ALL "C", "DO", "DI", AND "DL" LIGHTS.
- "NL" LIGHTS ARE MANUALLY CONTROLLED AND OPERATE CONTINUOUSLY FOR SECURITY LIGHTING.

3 LCP LIGHTING CONTROL SEQUENCE  
N.T.S.

SHEET NOTES

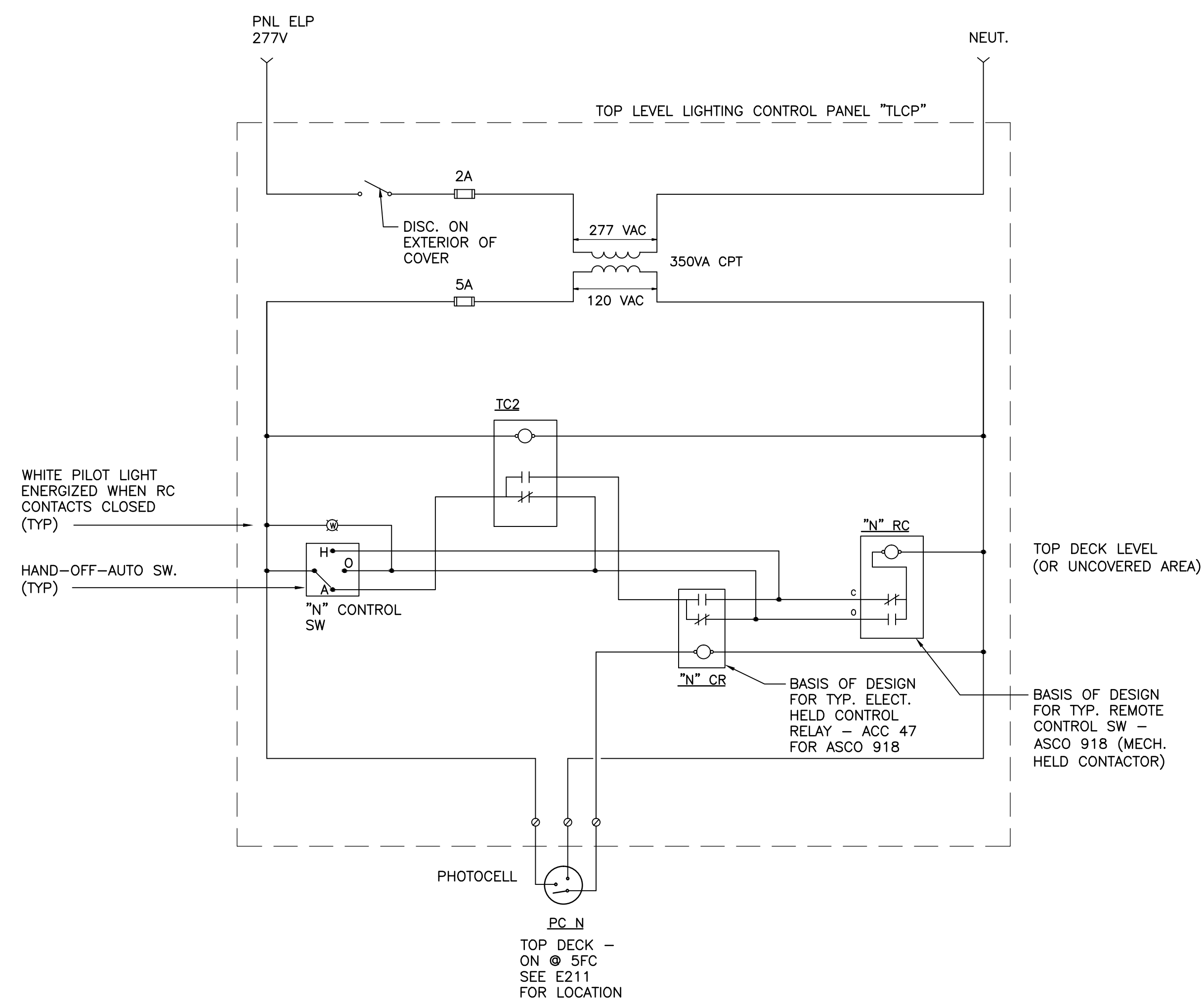
- SEE SHEET E001 FOR ADDITIONAL GENERAL NOTES.
- PROVIDE MIN. QUANTITY OF CONTACTS PER RC SWITCH AS SHOWN, REGARDLESS OF BID ALTERNATE TAKEN.
- SEVERAL LIGHTING CIRCUITS ARE CONTROLLED BY TWO CONTACTS (CONNECTED IN SERIES). CONTRACTOR SHALL PROVIDE JUMPER WIRES AS REQUIRED.

SHEET KEYNOTES

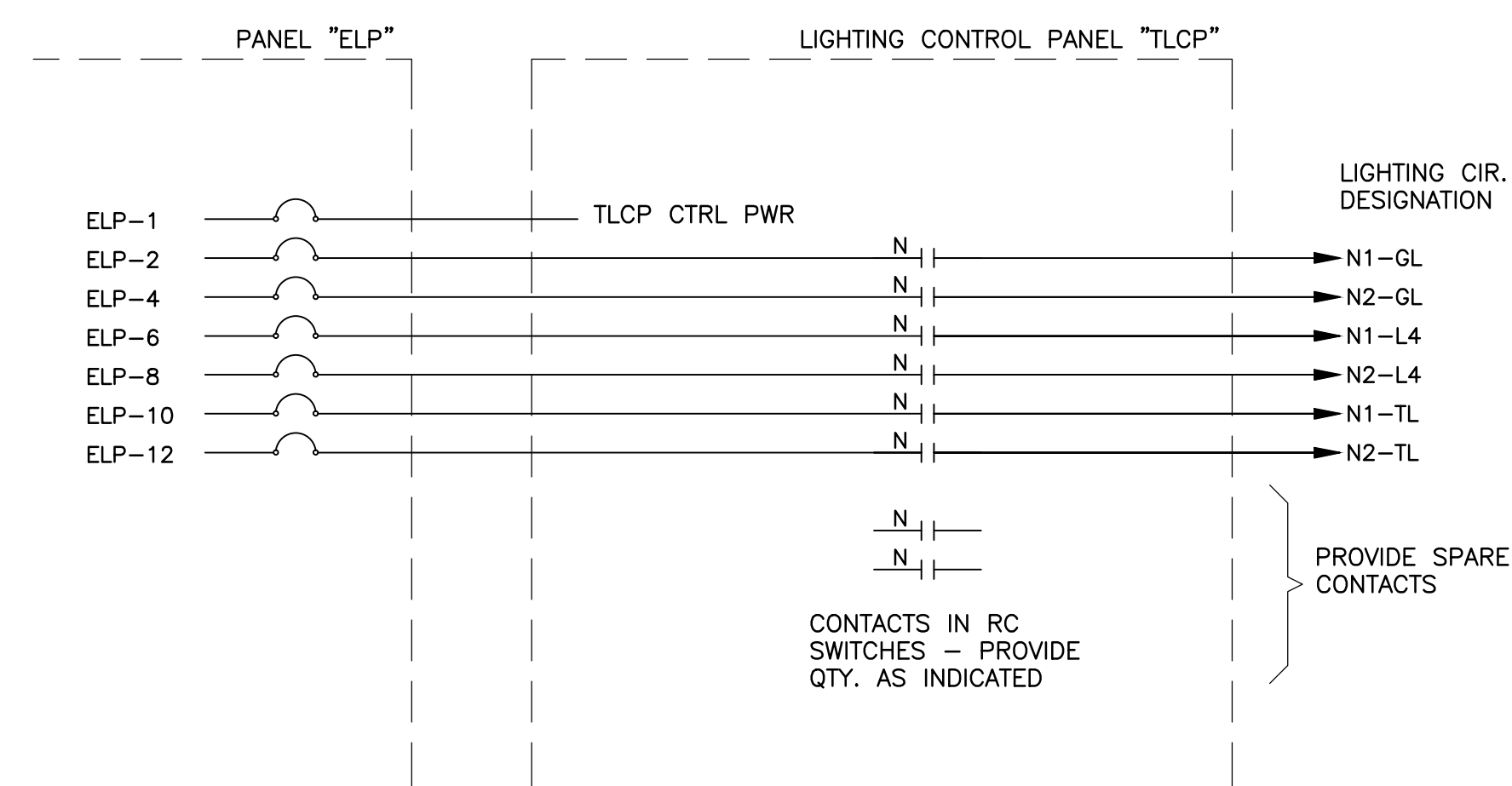
- PROVIDE THE LIGHTING SEQUENCE AND CONTROL IDENTIFICATION SCHEDULE ON THE FRONT FACE OF THE CONTROL PANEL. PROVIDE LABEL ON UV RESISTANT ADHESIVE VINYL OR PHENOLIC PLASTIC.

FINAL CONSTRUCTION DRAWINGS  
APPROVED FOR CONSTRUCTION

Dwg. File	ARCHITECT/ENGINEERS:	Chad J. Frelick, PE Florida Reg. 73811	CONSULTANTS:	Approved:	Drawing Title	Project Title	Date
	<b>AKEA INC.</b>		<b>WALKER</b> PARKING CONSULTANTS 4904 Eisenhower Blvd Suite 150 Tampa, FL 33634 813.888.5800 Ph 813.888.5822 Fax BE-0003840 www.walkerparking.com	Asst. Chief, Engineering Service Engineering Bldg. Maint. Foreman Engineering Operation Foreman Engineering Health & Safety Engineering Planning & Analysis C.O.T.R.	<b>LIGHTING CONTROLS</b>	<b>CONSTRUCT 525 SPACE PARKING GARAGE</b>	MARCH 26, 2015
	3603 NW 98TH ST., SUITE B GAINESVILLE, FLORIDA 32606 PH: (352) 474-6124 FAX: (352) 474-6324 CERT OF AUTH: FL #26693 EXPIRES: 02/28/2017		<b>FRANK DAUGHTRY</b> architect 200 E. Government Street Suite 240-A Pensacola, FL 32502 Voice 850-433-3023 Fax 850-433-3025 Email frank@frankda.com			CONTRACT No. VA249-14-C-0150 P.O. No. 621C40254	Project No. 621-330
Revisions	Date	AKEA, INC.	SEAL		Approved: Chief, Engineering Service Approved: Service Chief	Building Number 160 Checked CJF Drawn KLL	DRAWING NO. <b>E402</b> Page 126 of 131
						Location VAMC MOUNTAIN HOME, TENNESSEE	



1 PARTIAL TOP LEVEL LIGHTING CONTROL PANEL WIRING DIAGRAM  
N.T.S.



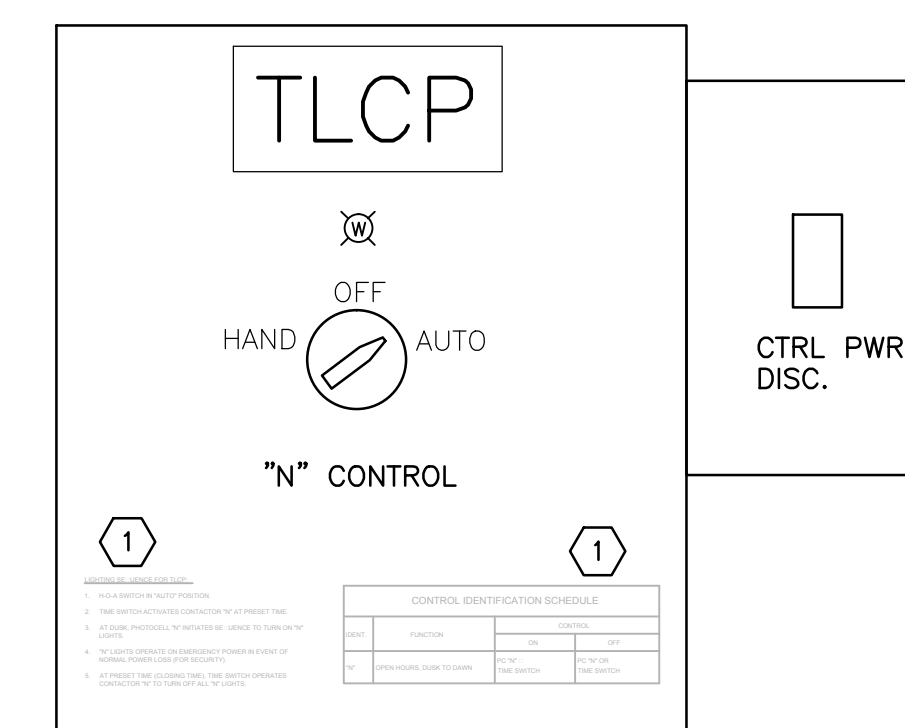
2 PARTIAL TOP LEVEL LIGHTING CONTROL PANEL WIRING DIAGRAM  
N.T.S.

CONTROL IDENTIFICATION SCHEDULE			
IDENT.	FUNCTION	CONTROL	
		ON	OFF
"N"	OPEN HOURS, DUSK TO DAWN	PC "N" <input type="checkbox"/> TIME SWITCH	PC "N" OR TIME SWITCH

LIGHTING SEQUENCE FOR TLCP:

1. H-O-A SWITCH IN "AUTO" POSITION.
2. TIME SWITCH ACTIVATES CONTACTOR "N" AT PRESET TIME.
3. AT DUSK, PHOTOCELL "N" INITIATES SEQUENCE TO TURN ON "N" LIGHTS.
4. "N" LIGHTS OPERATE ON EMERGENCY POWER IN EVENT OF NORMAL POWER LOSS (FOR SECURITY).
5. AT PRESET TIME (CLOSING TIME), TIME SWITCH OPERATES CONTACTOR "N" TO TURN OFF ALL "N" LIGHTS.

3 TLCP LIGHTING CONTROL SEQUENCE  
N.T.S.



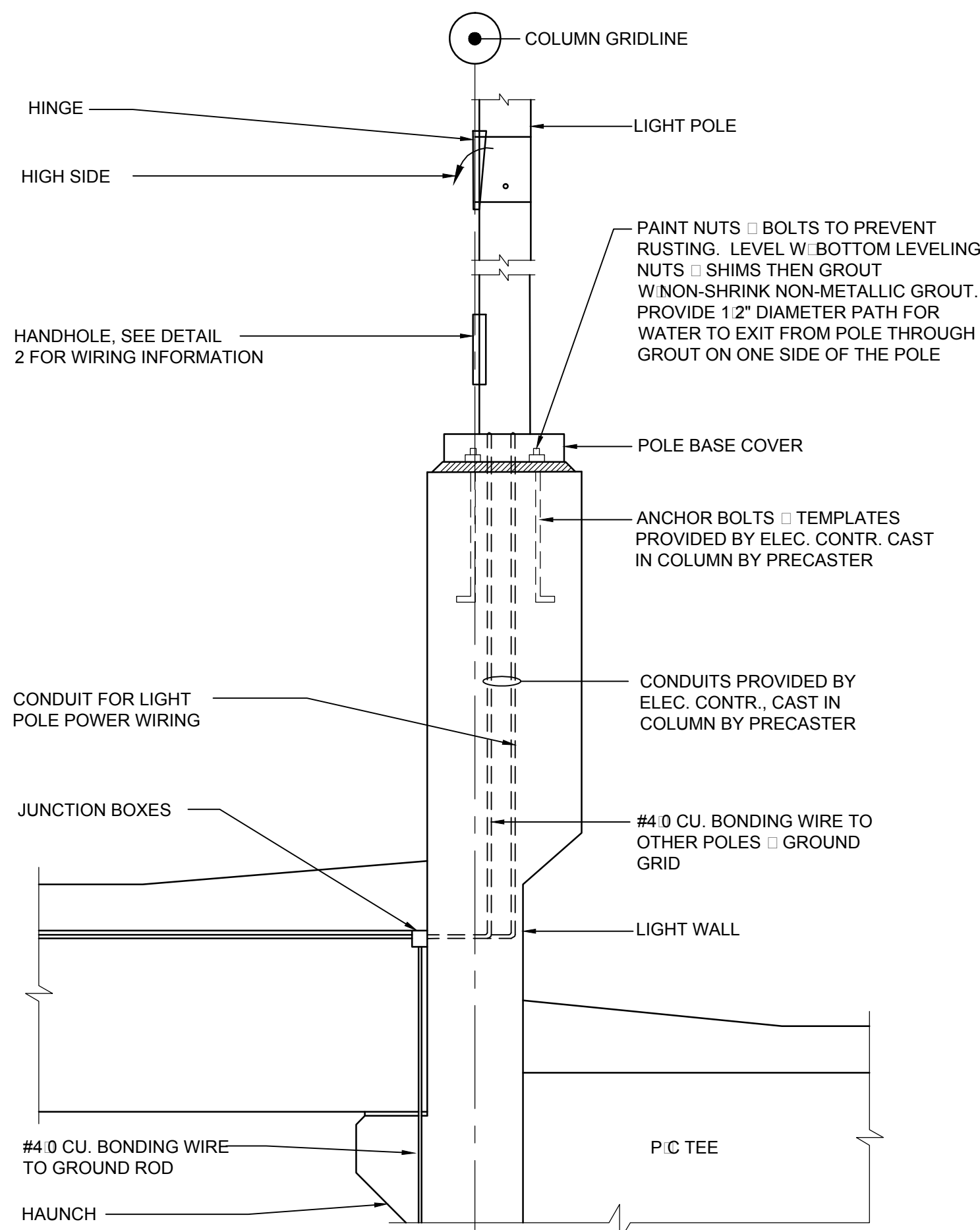
4 TLCP PANEL COVER  
N.T.S.

FINAL CONSTRUCTION DRAWINGS  
APPROVED FOR CONSTRUCTION

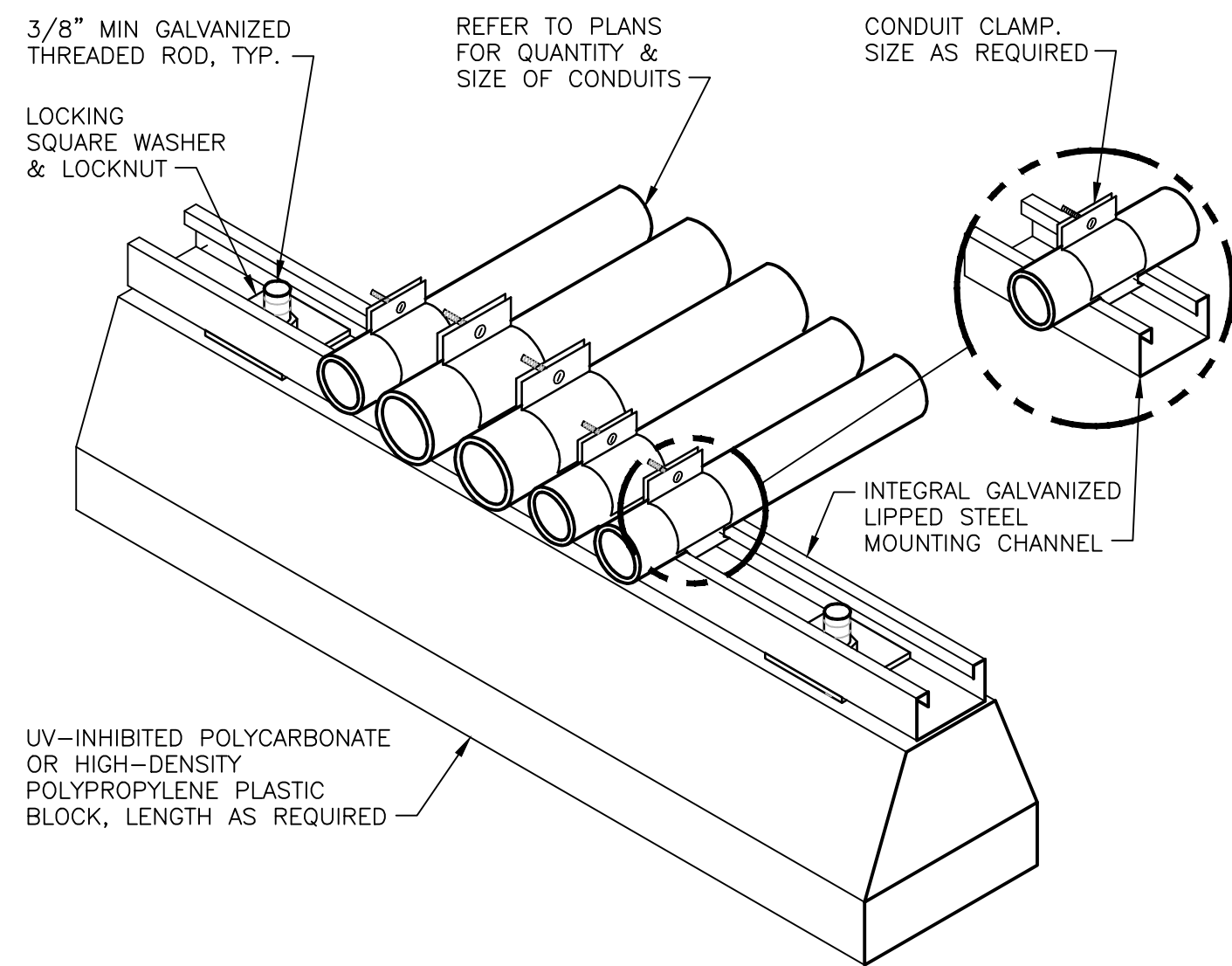
[illegible]

SHEET NOTES

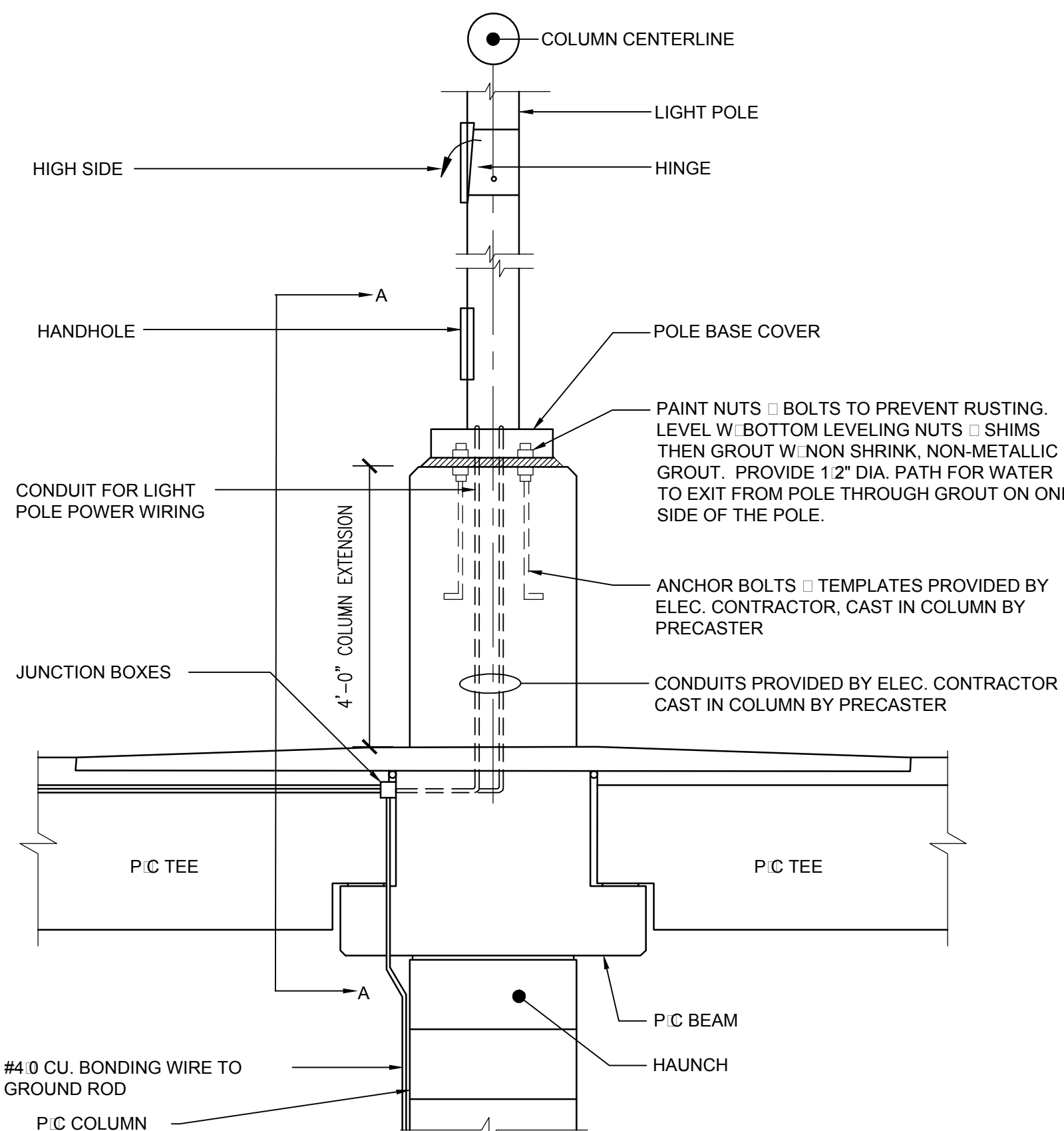
- A. SEE SHEET E001 FOR ADDITIONAL GENERAL NOTES.
- B. COORDINATE BOLT PATTERNS, BLOCKOUTS, AND CONDUITS FOR LIGHT POLES WITH STRUCTURAL DRAWINGS AND PRECASTER. WHEN SUBMITTING RACEWAY AND LIGHTING SHOP DRAWINGS, CONTRACTOR SHALL SUBMIT DOCUMENTATION FROM PRECASTER TO CONFIRM COORDINATION HAS TAKEN PLACE.



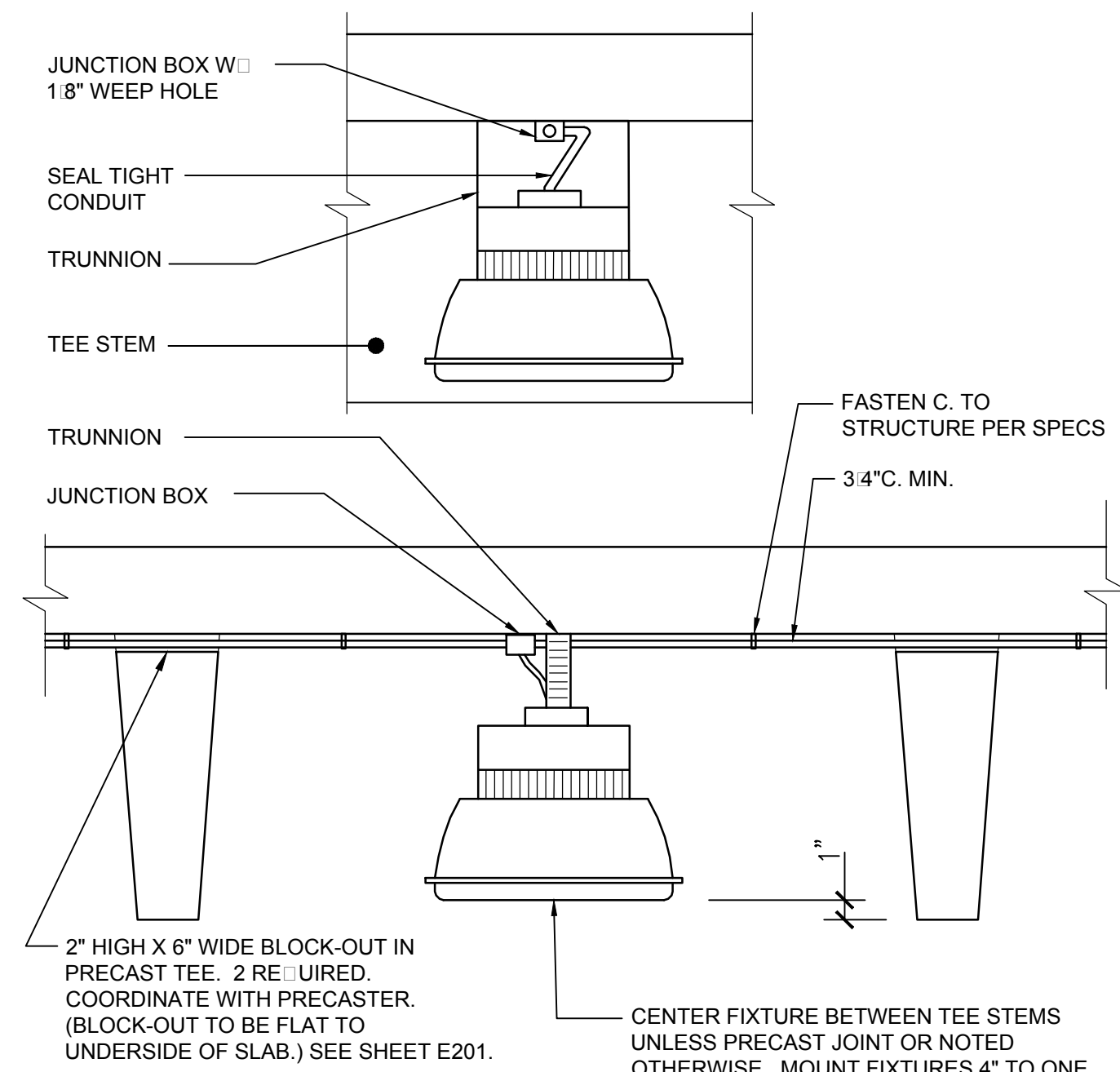
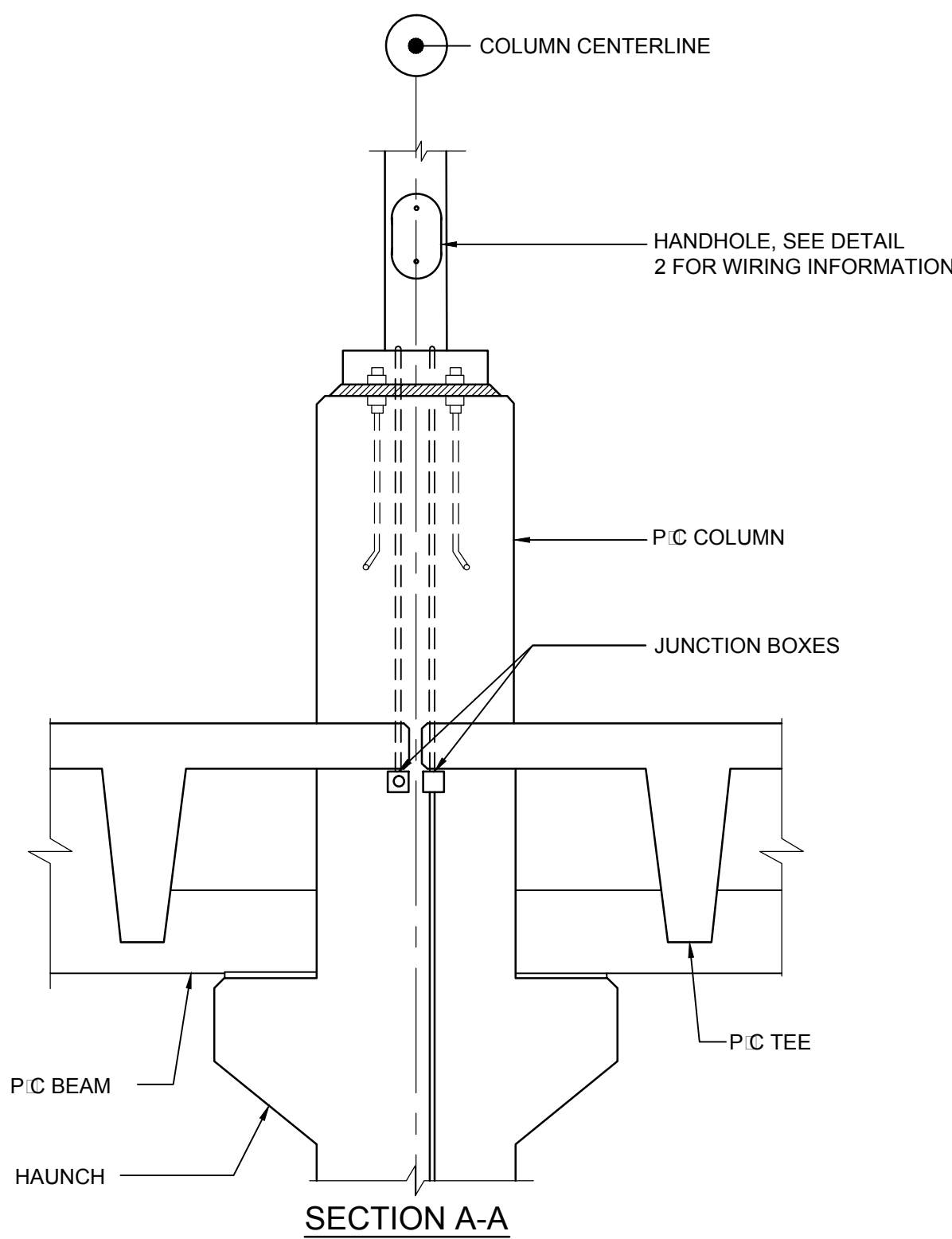
5 POLE MOUNTING DETAIL AT LIGHT WALL  
N.T.S.



1 ROOF CONDUIT SUPPORT DETAIL  
N.T.S.

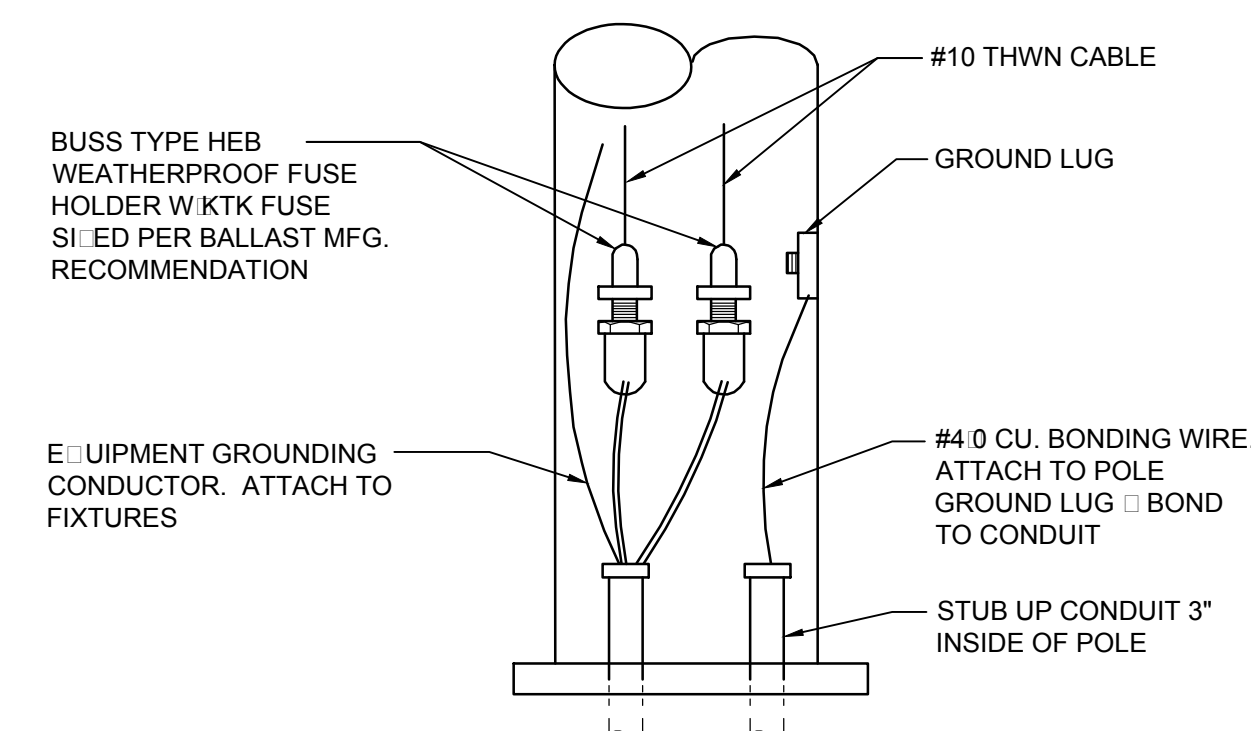


3 POLE MOUNTING DETAIL AT COLUMN  
N.T.S.



- NOTES:
1. ALL JUNCTION BOXES ATTACHED TO FIXTURES MUST BE CAST METAL.
  2. ALL OPENINGS IN TOP OF FIXTURE MUST BE SEALED.
  3. SEE SHEET E201 FOR APPROXIMATE BLOCK OUT LOCATIONS.

4 TRUNNION MOUNTING DETAIL  
N.T.S.



6 POLE WIRING DETAIL  
N.T.S.

FINAL CONSTRUCTION DRAWINGS  
APPROVED FOR CONSTRUCTION

Dwg. File	ARCHITECT/ENGINEERS:	Chad J. Frelick, PE Florida Reg. 73811	CONSULTANTS:	Approved:	Drawing Title	Project Title	Date
	<b>AKEA INC.</b> 3603 NW 98TH ST., SUITE B GAINESVILLE, FLORIDA 32606 PH: (352) 474-6124 FAX: (352) 474-6324 CERT OF AUTH: FL #26693 EXPIRES: 02/28/2017		<b>WALKER</b> PARKING CONSULTANTS 4904 Eisenhower Blvd Suite 150 Tampa, FL 33634 813.888.5800 Ph 813.888.5822 Fax BE-0003840 www.walkerparking.com	Asst. Chief, Engineering Service Engineering Bldg. Maint. Foreman Engineering Operation Foreman Engineering Health & Safety Engineering Planning & Analysis C.O.T.R.	<b>LIGHTING DETAILS</b>	<b>CONSTRUCT 525 SPACE PARKING GARAGE</b> CONTRACT No. VA249-14-C-0150 P.O. No. 621C40254	MARCH 26, 2015
Revisions		AKEA, INC.	SEAL		Approved: Chief, Engineering Service Approved: Service Chief	Building Number <b>160</b> Checked CJF Drawn KLL Location VAMC MOUNTAIN HOME, TENNESSEE	Project No. 621-330 DRAWING NO. <b>E404</b> Page 128 of 131

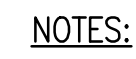


3 PHASE PANEL SCHEDULE						MDP		42-POLE											
PANEL DESIGNATION		MDP		MAIN BK(R/A)		300													
PANEL LOCATION		ELEC. RM.		BUS RATING (A)		400													
FED FROM		BLDG 160		MOUNTING SURFACE		REMARKS													
VOLTAGE		480Y/277		PNL WITH STAND (A)		100AIC													
		3-PH 4-W		NEUA		1		PROVIDE WITH INTEGRAL TVSS											
PHASE VA																			
DESCRIPTION	LOAD TYPE	BKR A/P	CR NO	A			B			C			CR NO	BKR A/P	LOAD TYPE	DESCRIPTION			
				NO	NO	NO	NO	NO	NO	NO	NO	NO							
ATS-ELVDP	M	1003	1	17,459	4,640							2	703	V	PNL LA VA XMR TA				
NORM. PWR	---	M	---	3			17,459	4,697				4	---	V	---				
---	---	M	---	5					17,459	5,737		6	---	V	---				
ATS-ELP	V	1003	7	4,064	0							8	1003		SPARE				
NORM. PWR	---	L	---	9			4,041	0				10	---	---	---				
---	---	L	---	11					2,435	0		12	---	---	---				
ATS-ELA	V	703	13	8,297	0							14	703		SPARE				
NORM. PWR	---	V	---	15			10,590	0				16	---	---	---				
---	---	V	---	17					7,063	0		18	---	---	---				
PNL LP	V	1003	19	5,295	0							20	201		SPARE				
---	---	L	---	21			5,865	0				22	---		SPACE				
---	---	L	---	23					3,825	0		24	---		SPACE				
SPACE			25	0	0							26	---		SPACE				
SPACE			27			0	0					28	---		SPACE				
SPACE			29					0	0			30	---		SPACE				
SPACE			31	0	0							32	203	S	OWNERS POWER METER VOLTAGE				
SPACE			33			0	0					34	---	S	---				
SPACE			35					0	0			36	---	S	---				
SPACE			37	0	0							38	2		TVSS				
SPACE			39			0	0					40	---	---	---				
SPACE			41					0	0			42	---	---	---				
VA EACH PHASE				30,745	42,651	36,519													
										CONNECTED		DEMAND		LOAD TYPE					
AREA SERVED (SF)				VA LIGHTING		26,786		33,461		R = RECEPTACLE									
MIN LTG (VA/SF)				VA RECEPTACLE		14,400		12,200		L = LIGHTING									
				VA MOTOR		70,629		83,724		M = MOTOR									
				VA GENERAL		7,100		7,100		G = GENERAL									
				VA W/ MULTIPLIER		0		0		S = SPECIAL									
						0		0		V = VARIED									
Demand calc:										VA		AMPS		** = NON CONCURRENT					
Lighting per NEC 215.2 & 220.12										118,914		143.0							
Receptacle per NEC 220.14 & 220.44										TOTAL CONNECTED		136,505		164.2					
Motor per NEC 430.24										TOTAL DEMAND									

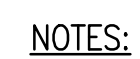
3 PHASE PANEL SCHEDULE				ELVDP				30-POLE				
PANEL DESIGNATION				ELEV RM				MAIN LUGS ONLY				
PANEL LOCATION				ELEV RM				BUS RATING (A) 250				
FED FROM				ATS-ELVDP				MOUNTING SURFACE				
VOLTAGE				480Y/277				P.NL WITH STAND (A) 18KVA				
				3PH 4W				NEMA 1				
								REMARKS				
								DEDICATED ELEVATOR PANEL				
								PROVIDE WITH INTEGRAL TVSS				
PHASE VA												
DESCRIPTION	LOAD TYPE	BKR NO	CR NO	A	B	C	CR NO	BKR /A/P	LOAD TYPE	DESCRIPTION		
ELEVATOR NO. 4	M	503	1	5,820	5,820		2	503	M	ELEVATOR NO. 2B		
---	M	---	3		5,820	5,820		---	M	---		
---	M	---	5			5,820	5,820	6	---	M		
ELEVATOR NO. 2A	M	503	7	5,820	0		8	503		SPARE		
---	M	---	9		5,820	0	10	---		---		
---	M	---	11			5,820	0	12		---		
SPARE		20/1	13	0	0		14			SPACE		
SPARE		20/1	15		0	0	16			SPACE		
SPARE		20/1	17			0	0	18		SPACE		
SPARE		20/1	19	0	0		20			SPACE		
SPARE			21		0	0	22			SPACE		
SPARE			23			0	0	24		SPACE		
SPACE			25	0	0		26	---	2	TVSS		
SPACE			27		0	0	28	---	---	---		
SPACE			29			0	0	30	---	---		
				0	0							
					0	0						
						0	0					
				0	0							
					0	0						
						0	0					
VA EACH PHASE				17,459	17,459	17,459						
LOAD TYPE												
AREA SERVED (SF)				VA LIGHTING				CONNECTED				
MIN LTG (VA/SF)				VA RECEPTACLE				DEMAND				
				VA MOTOR				R = RECEPTACLE				
				VA GENERAL				L = LIGHTING				
				VA W/ MULTIPLIER				M = MOTOR				
								G = GENERAL				
								S = SPECIAL				
								V = VARIED				
Demand calc:				VA				AMPS				
Lighting per NEC 215.2 & 220.12				52,377				63.0				
Receptacle per NEC 220.14 & 220.44				58,742				68.2				
Motor per NEC 430.24				56,742								
TOTAL CONNECTED				52,377								
TOTAL DEMAND				56,742								

3 PHASE PANEL SCHEDULE														
PANEL DESIGNATION LP					MAIN LUGS ONLY					30-POLE				
PANEL LOCATION ELEC. RM.					BUS RATING (A) 125									
FED FROM PNL MDP					MOUNTING SURFACE					REMARKS				
VOLTAGE 480Y/277					PNL WITH/STAND (A) 16ANC					277V LIGHTING ON NORMAL POWER				
3-PH 4-W					NEMA 1									
PHASE VA														
DESCRIPTION	LOAD TYPE	BKR A/P	CR NO	A	B	C	CR NO	BKR A/P	LOAD TYPE	DESCRIPTION				
LOP CONTROL POWER	G	201	1	100	0		2	201		SPARE				
C-GL	L	201	3		170	0		4	201	SPARE				
DIGL	L	201	5			1,020	0	6	201	SPARE				
DO-GL	L	201	7	1,020	0			8	201	SPARE				
C-12	L	201	9		340	0		10	201	SPARE				
DL-12	L	201	11			1,020	0	12	201	SPARE				
DA-2	L	201	13	1,785	0			14	201	SPARE				
DO-2	L	201	15		1,870	0		16	201	SPARE				
C-13	L	201	17			755	0	18	201	SPARE				
DA-3	L	201	19	1,445	0			20	201	SPARE				
DO-3	L	201	21		2,295	0		22	201	SPARE				
C-14	L	201	23			255	0	24	201	SPARE				
DA-4	L	201	25	935	0			26	201	SPARE				
DO-4	L	201	27		1,190	0		28	201	SPARE				
DL-4	L	201	29			765	0	30	201	SPARE				
				0	0									
					0	0								
				0	0									
					0	0								
						0	0							
							0	0						
VA EACH PHASE				5,285	5,865	3,825								
AREA SERVED (SF)				VA LIGHTING			CONNECTED		DEMAND		LOAD TYPE			
MIN LTG (VA/SF)				VA RECEPTACLE			14,975		18,594		R = RECEPTACLE			
				VA MOTOR			0		0		L = LIGHTING			
				VA GENERAL			100		100		M = MOTOR			
				VA W/ MULTIPLIER			0		0		G = GENERAL			
							0		0		S = SPECIAL			
							0		0		V = VARIED			
Demand calc:							VA		AMPS		** = NON CONCURRENT			
Lighting per NEC 215.2 & 220.12							14,975		18.0					
Receptacle per NEC 220.14 & 220.44				TOTAL CONNECTED			18,694		22.5					
Motor per NEC 430.24				TOTAL DEMAND			18,694		22.5					

3 PHASE PANEL SCHEDULE									
PANEL DESIGNATION LA					MAIN BKR(A) 100				
PANEL LOCATION ELEC. RM					BUS RATING (A) 100				
FED FROM XFMR TA					MOUNTING SURFACE				
VOLTAGE 208Y/120					PNL WITHSTAND 10KVMC				
3PHE 4W					NEPA 1				
PHASE VA									
DESCRIPTION	LOAD TYPE	BKR AP	CR NO	A	B	C	CR NO	BKR AP	LOAD TYPE
SPARE		201	1	0	0		2	202	SPARE
SPARE		201	3		0	0	4	---	---
SPARE		201	5			0	1,400	6	202
SPARE		201	7	0	1,400		8	---	M
GARAGE GEN RECS	R	201	9		900	1,457	10	302	M
GARAGE GEN RECS	R	201	11			720	1,457	12	---
GARAGE GEN RECS	R	201	13	900	0		14	302	SPARE
GARAGE GEN RECS	R	201	15		720	0	16	---	---
GARAGE GEN RECS	R	201	17			720	0	18	201
GARAGE GEN RECS	R	201	19	720	0		20	201	SPARE
GARAGE GEN RECS	R	201	21		720	0	22	201	SPARE
MECH. ROOM RECS	R	201	23			1,080	0	24	201
STAR NO. 3 RECS	R	201	25	900	0		26	201	SPARE
STAR NO. 2 RECS	R	201	27		900	0	28	201	SPARE
STAR NO. 1 RECS	R	201	29			360	0	30	201
SPARE	R	201	31	720	0		32	201	SPARE
SPARE		201	33		0	0	34	201	SPARE
SPARE		201	35			0	0	36	201
SPACE		37	0	0	0		38	201	SPARE
SPACE		39		0	0		40	201	SPARE
SPACE		41				0	0	42	201
VA EACH PHASE				4,640	4,697	5,737			
AREA SERVED (SF)				CONNECTED			DEMAND		
MIN LTG (VA/SF)				VA RECEPTACLE			R = RECEPTACLE		
				VA MOTOR			L = LIGHTING		
				VA GENERAL			M = MOTOR		
				VA W/MULTIPLIER			G = GENERAL		
							S = SPECIAL		
							V = VARIED		
							* = NON COMPLICATED		
Demand calc:				VA			AMPS		
Receptacle per NEC 210.2 & 220.12				15,073			41.8		
Motor per NEC 430.24				15,801			43.9		
TOTAL CONNECTED									
TOTAL DEMAND									



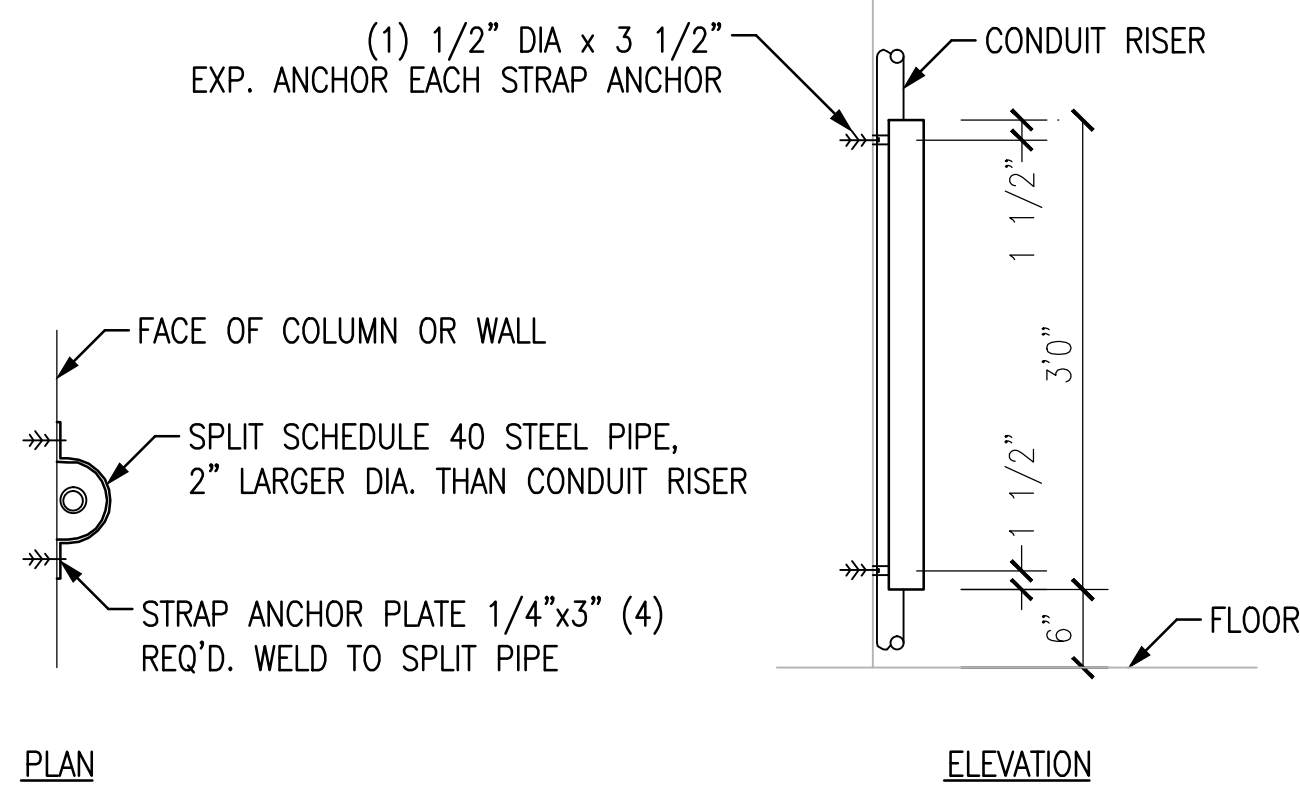
- 1 PULL BOX DETAIL - PAVED  
N.T.S.



- 4 PULLBOX DETAIL - UNPAVED  
N.T.S.







- NOTES:**
- ALL PIPING, PLATES, HARDWARE, ETC. TO BE HOT DIPPED GALVANIZED OR STAINLESS STEEL.
  - PROVIDE RISER GUARDS FOR EXPOSED CONDUITS AT ALL LOCATIONS PRONE TO BUMPER DAMAGE OR VEHICLE STRIKE. THIS INCLUDES BUT IS NOT LIMITED TO ALL RISERS ALONG WALLS IN FRONT OF PARKING SPOTS (REGARDLESS OF LOCATION WITH RESPECT TO STRIPING).
  - SUBMIT SHOP DRAWINGS FOR RISER GUARDS AND FLOORPLANS TO INDICATE PROPOSED LOCATIONS.

**1 CONDUIT RISER GUARD DETAIL**  
N.T.S.

NAMEPLATES FOR EMERGENCY POWER EQUIPMENT SHALL BE LAMINATED RED PHENOLIC RESIN WITH SOLID WHITE CORE WITH ENGRAVED LETTERING MINIMUM OF 1/4 INCH HEIGHT. NAMEPLATES FOR NORMAL BRANCH EQUIPMENT SHALL BE BLACK WITH WHITE CORE.

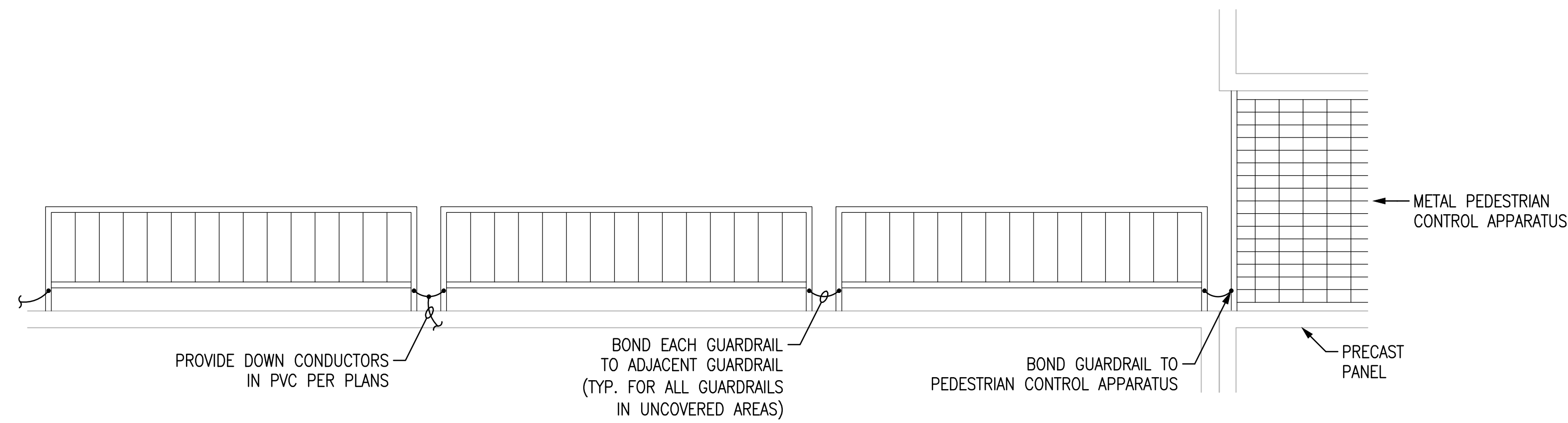
ENGRAVE THE FOLLOWING INFORMATION ON EACH EQUIPMENT IDENTIFICATION NAMEPLATE, SIMILAR TO THAT SHOWN IN THE EXAMPLES, EXCEPT APPROPRIATE FOR THE SPECIFIC EQUIPMENT BEING IDENTIFIED:

- IN THE FIRST LINE, INDICATE THE EQUIPMENT TYPE AND NAME (FOLLOWED BY "EMERGENCY" OR "NORMAL").
- IN THE SECOND LINE, INDICATE THE EQUIPMENT VOLTAGE, PHASE, AND NUMBER OF WIRES.
- IN THE SUBSEQUENT LINES, INDICATE THE WORDS "SERVED FROM" FOLLOWED BY THE NAME AND LOCATION OF THE SOURCE EQUIPMENT. IF THE EQUIPMENT IS SUPPLIED THROUGH AN ATS OR OTHER ITEM WITHOUT DISCONNECTS, INCLUDE DATA ON ALL UPSTREAM DISCONNECTS; AND BENEATH THE SOURCES ADD THE WORD "THROUGH" FOLLOWED BY THE NAME OF THE EQUIPMENT THAT THE SOURCES ARE CONNECTED THROUGH.

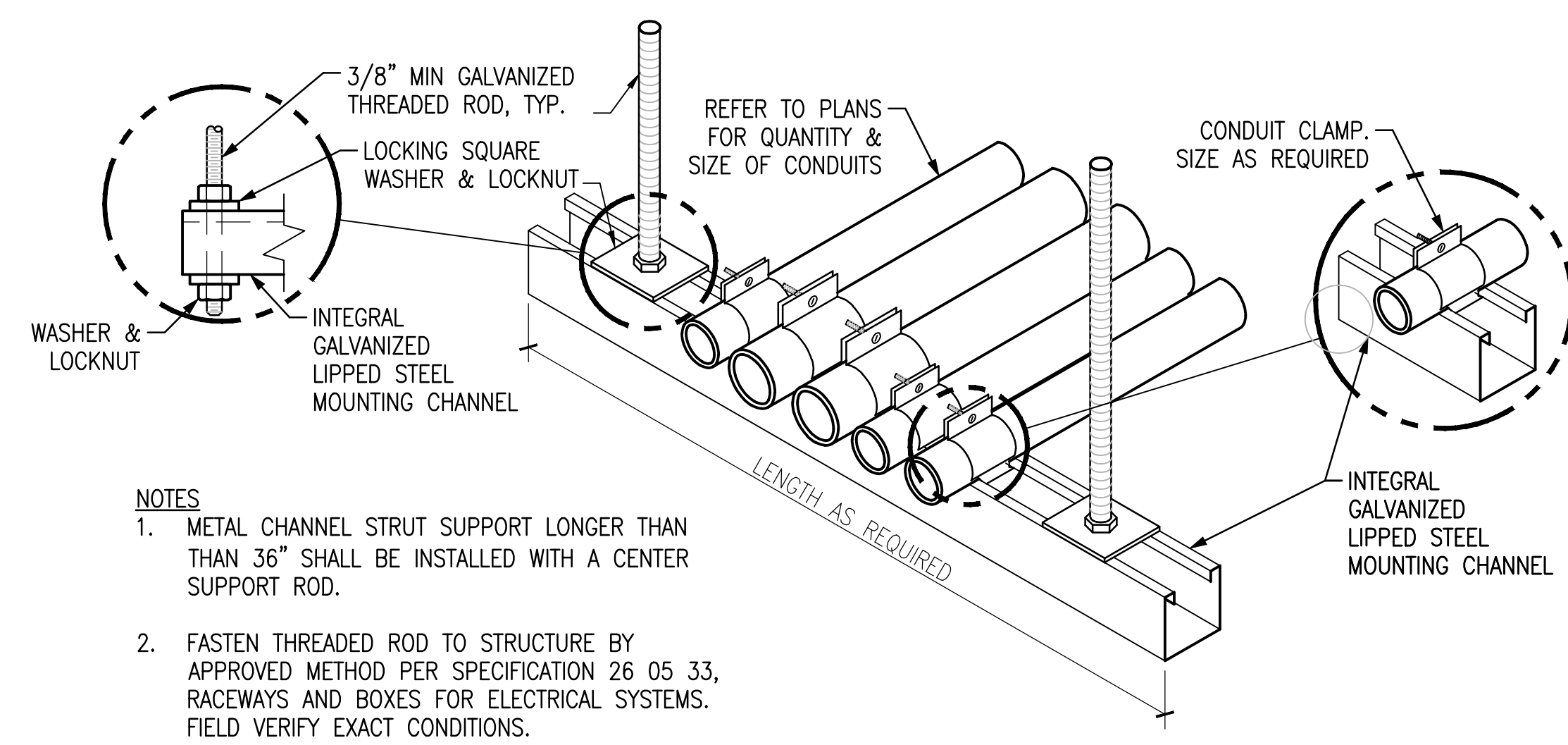
**PANEL MDP (NORMAL)**  
480Y/277 VOLTS, 3-PHASE, 4-WIRE  
SERVED FROM  
MSGR (BLDG. 160 RM. N054)

**TRANSFER SWITCH ATS-ELVDP (EMERGENCY)**  
480Y/277 VOLTS, 3-PHASE, 4-WIRE  
SERVED FROM  
PNL MDP (ELEC. RM.) AND PNL EDP (ELEC. RM.)

**3 EQUIPMENT NAMEPLATE DETAIL**  
N.T.S.

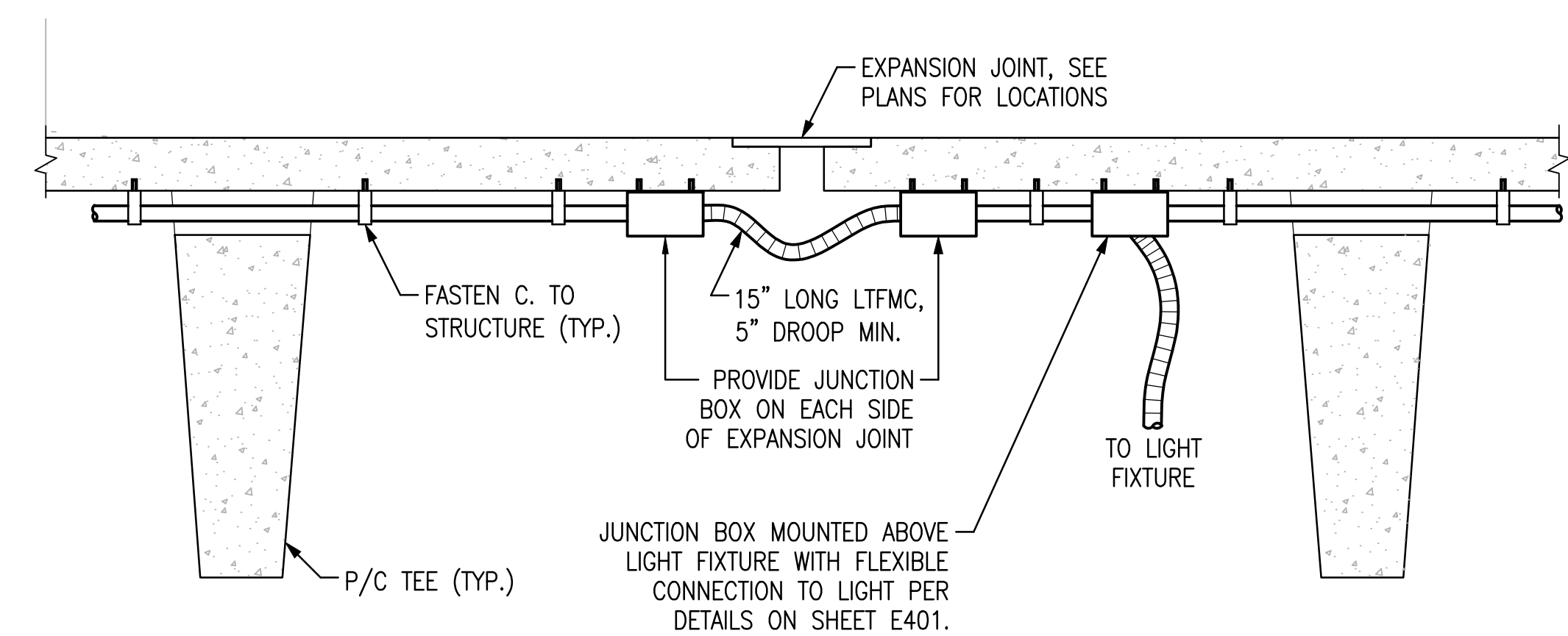


**2 GUARDRAIL GROUNDING AND BONDING DETAIL**  
N.T.S.



- NOTES:**
- METAL CHANNEL STRUT SUPPORT LONGER THAN 36" SHALL BE INSTALLED WITH A CENTER SUPPORT ROD.
  - FASTEN THREADED ROD TO STRUCTURE BY APPROVED METHOD PER SPECIFICATION 26 05 33, RACEWAYS AND BOXES FOR ELECTRICAL SYSTEMS. FIELD VERIFY EXACT CONDITIONS.

**4 CONDUIT TRAPEZE MOUNTING DETAIL**  
N.T.S.



**5 EXPANSION JOINT DETAIL**  
N.T.S.

FINAL CONSTRUCTION DRAWINGS  
APPROVED FOR CONSTRUCTION

Dwg. File	ARCHITECT/ENGINEERS:	CONSULTANTS:	Approved:	Drawing Title	Project Title	Date
	<b>AKEA INC.</b> 3603 NW 98TH ST., SUITE B GAINESVILLE, FLORIDA 32606 PH: (352) 474-6124 FAX: (352) 474-6324 CERT OF AUTH: FL #26693 EXPIRES: 02/28/2017	<b>WALKER PARKING CONSULTANTS</b> 4904 Eisenhower Blvd Suite 150 Tampa, FL 33634 813.888.5800 Ph 813.888.5822 Fax BE-0003840 www.walkerparking.com	Asst. Chief, Engineering Service Engineering Bldg. Maint. Foreman Engineering Operation Foreman Engineering Health & Safety Engineering Planning & Analysis C.O.T.R.	<b>ELECTRICAL DETAILS</b>	<b>CONSTRUCT 525 SPACE PARKING GARAGE</b> CONTRACT No. VA249-14-C-0150 P.O. No. 621C40254	MARCH 26, 2015
Revisions				Approved: Chief, Engineering Service Approved: Service Chief	Building Number 160 Checked CJF Drawn KLL Location VAMC MOUNTAIN HOME, TENNESSEE	Project No. 621-330 DRAWING NO. <b>E502</b> Page 131 of 131