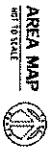
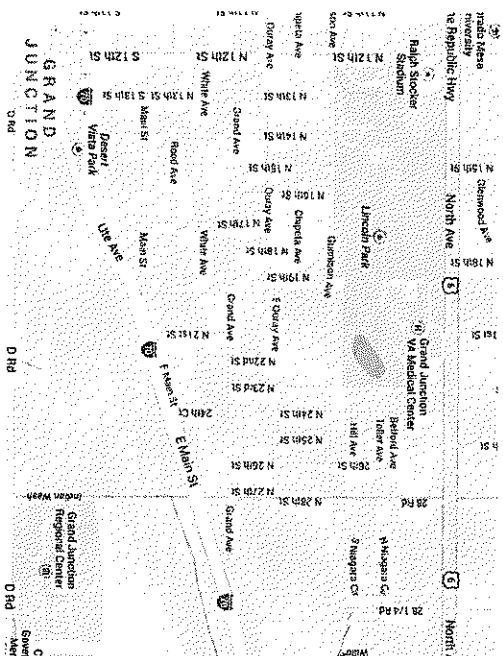


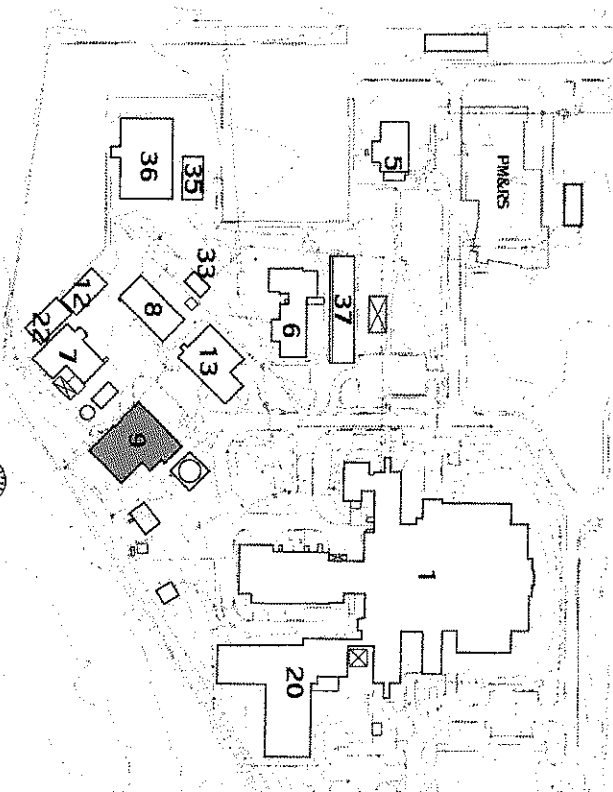


**GRAND JUNCTION VA MEDICAL CENTER  
2121 NORTH AVENUE  
GRAND JUNCTION, CO 81501**



## SHEET INDEX

- [illegible]



# SITE PLAN

[illegible]

[illegible][illegible]

It is important to note that the above information is not intended to be used as a basis for making any investment decision. The information is provided for informational purposes only and should not be relied upon as a basis for making any investment decision. The information is provided for informational purposes only and should not be relied upon as a basis for making any investment decision.

[illegible][illegible]

ASBOS	ASBOSBES
AC	ASBOSIN (CONCRETE)
AD	ASBOSIN (WOOD)
ADP	ASBOSIN (WOOD) LATHING
B01	ASBOSIN (WOOD) SHIP
B09	ASBOSIN (WOOD) SHIP
C01	ASBOSIN (WOOD) SHIP
C02	ASBOSIN (WOOD) SHIP
C03	ASBOSIN (WOOD) SHIP
C04	ASBOSIN (WOOD) SHIP
C05	ASBOSIN (WOOD) SHIP
C06	ASBOSIN (WOOD) SHIP
C07	ASBOSIN (WOOD) SHIP
C08	ASBOSIN (WOOD) SHIP
C09	ASBOSIN (WOOD) SHIP
C10	ASBOSIN (WOOD) SHIP
C11	ASBOSIN (WOOD) SHIP
C12	ASBOSIN (WOOD) SHIP
C13	ASBOSIN (WOOD) SHIP
C14	ASBOSIN (WOOD) SHIP
C15	ASBOSIN (WOOD) SHIP
C16	ASBOSIN (WOOD) SHIP
C17	ASBOSIN (WOOD) SHIP
C18	ASBOSIN (WOOD) SHIP
C19	ASBOSIN (WOOD) SHIP
C20	ASBOSIN (WOOD) SHIP
C21	ASBOSIN (WOOD) SHIP
C22	ASBOSIN (WOOD) SHIP
C23	ASBOSIN (WOOD) SHIP
C24	ASBOSIN (WOOD) SHIP
C25	ASBOSIN (WOOD) SHIP
C26	ASBOSIN (WOOD) SHIP
C27	ASBOSIN (WOOD) SHIP
C28	ASBOSIN (WOOD) SHIP
C29	ASBOSIN (WOOD) SHIP
C30	ASBOSIN (WOOD) SHIP
C31	ASBOSIN (WOOD) SHIP
C32	ASBOSIN (WOOD) SHIP
C33	ASBOSIN (WOOD) SHIP
C34	ASBOSIN (WOOD) SHIP
C35	ASBOSIN (WOOD) SHIP
C36	ASBOSIN (WOOD) SHIP
C37	ASBOSIN (WOOD) SHIP
C38	ASBOSIN (WOOD) SHIP
C39	ASBOSIN (WOOD) SHIP
C40	ASBOSIN (WOOD) SHIP
C41	ASBOSIN (WOOD) SHIP
C42	ASBOSIN (WOOD) SHIP
C43	ASBOSIN (WOOD) SHIP
C44	ASBOSIN (WOOD) SHIP
C45	ASBOSIN (WOOD) SHIP
C46	ASBOSIN (WOOD) SHIP
C47	ASBOSIN (WOOD) SHIP
C48	ASBOSIN (WOOD) SHIP
C49	ASBOSIN (WOOD) SHIP
C50	ASBOSIN (WOOD) SHIP
C51	ASBOSIN (WOOD) SHIP
C52	ASBOSIN (WOOD) SHIP
C53	ASBOSIN (WOOD) SHIP
C54	ASBOSIN (WOOD) SHIP
C55	ASBOSIN (WOOD) SHIP
C56	ASBOSIN (WOOD) SHIP
C57	ASBOSIN (WOOD) SHIP
C58	ASBOSIN (WOOD) SHIP
C59	ASBOSIN (WOOD) SHIP
C60	ASBOSIN (WOOD) SHIP
C61	ASBOSIN (WOOD) SHIP
C62	ASBOSIN (WOOD) SHIP
C63	ASBOSIN (WOOD) SHIP
C64	ASBOSIN (WOOD) SHIP
C65	ASBOSIN (WOOD) SHIP
C66	ASBOSIN (WOOD) SHIP
C67	ASBOSIN (WOOD) SHIP
C68	ASBOSIN (WOOD) SHIP
C69	ASBOSIN (WOOD) SHIP
C70	ASBOSIN (WOOD) SHIP
C71	ASBOSIN (WOOD) SHIP
C72	ASBOSIN (WOOD) SHIP
C73	ASBOSIN (WOOD) SHIP
C74	ASBOSIN (WOOD) SHIP
C75	ASBOSIN (WOOD) SHIP
C76	ASBOSIN (WOOD) SHIP
C77	ASBOSIN (WOOD) SHIP
C78	ASBOSIN (WOOD) SHIP
C79	ASBOSIN (WOOD) SHIP
C80	ASBOSIN (WOOD) SHIP
C81	ASBOSIN (WOOD) SHIP
C82	ASBOSIN (WOOD) SHIP
C83	ASBOSIN (WOOD) SHIP
C84	ASBOSIN (WOOD) SHIP
C85	ASBOSIN (WOOD) SHIP
C86	ASBOSIN (WOOD) SHIP
C87	ASBOSIN (WOOD) SHIP
C88	ASBOSIN (WOOD) SHIP
C89	ASBOSIN (WOOD) SHIP
C90	ASBOSIN (WOOD) SHIP
C91	ASBOSIN (WOOD) SHIP
C92	ASBOSIN (WOOD) SHIP
C93	ASBOSIN (WOOD) SHIP
C94	ASBOSIN (WOOD) SHIP
C95	ASBOSIN (WOOD) SHIP
C96	ASBOSIN (WOOD) SHIP
C97	ASBOSIN (WOOD) SHIP
C98	ASBOSIN (WOOD) SHIP
C99	ASBOSIN (WOOD) SHIP
C100	ASBOSIN (WOOD) SHIP

[illegible][illegible]

# PLACING NOTES

GENERAL NOTES, PHASING  
NOTES, ABBREVIATIONS,  
BOLLER CONTROLS

---

[illegible]

\_\_\_\_\_

---

Circumstance	Percentage (%)
(1) self-defense	95
(2) defense of others	90
(3) defense of property	85
(4) defense of a business	80
(5) defense of a country	75



SEAL

PLANNED CONTINUING SERVICES  
5005 PARKLE FERRY ROAD, SUITE D  
CANNING, GA 30040  
(878) 714-0725

General Notes  
SYNOPSIS

NOTES, PHASES,  
ABBREVIATIONS

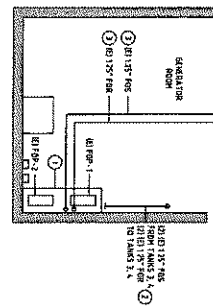
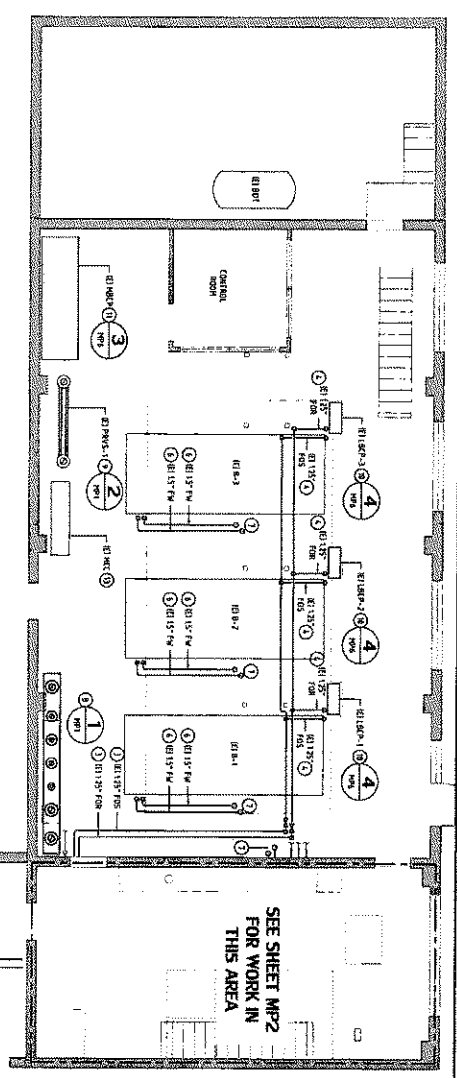
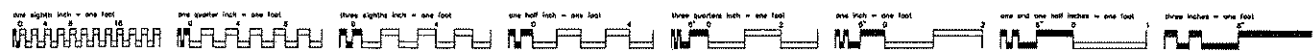
6/	CR	60	60
----	----	----	----

CONTROLS		JUNCTION, COLOR
Ureol	LP	
5		

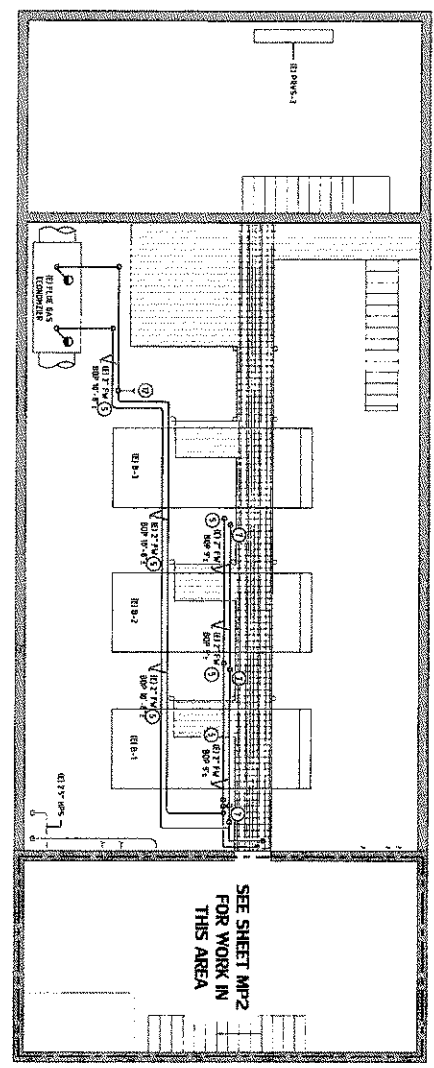
Product Name	9-BOLH
Safety Data	
575-14	
Dog :	

CON  
and  
MAN

tion  
of  
the  
state



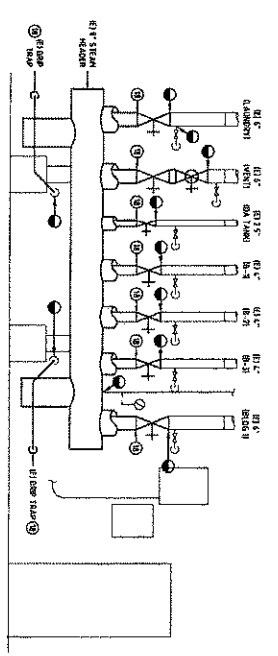
LOWER LEVEL PLAN  
SCALE 1/8" = 1'-0"



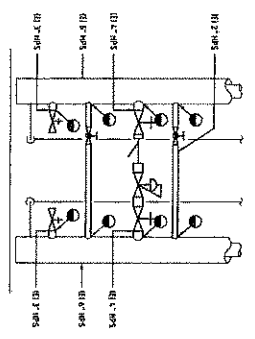
UPPER LEVEL PLAN  
SCALE 1/8" = 1'-0"

NUMBERED NOTES

1. DEMOLISH TO 50' PUMP SET INCLUDING SUMP, PIPING, VALVES, ETC. EXCEPT 11.
2. DEMOLISH TO 50' PUMP SET INCLUDING SUMP, PIPING, VALVES, ETC. EXCEPT 11.
3. DEMOLISH TO 50' PUMP SET INCLUDING SUMP, PIPING, VALVES, ETC. EXCEPT 11.
4. DEMOLISH TO 50' PUMP SET INCLUDING SUMP, PIPING, VALVES, ETC. EXCEPT 11.
5. DEMOLISH TO 50' PUMP SET INCLUDING SUMP, PIPING, VALVES, ETC. EXCEPT 11.
6. DEMOLISH TO 50' PUMP SET INCLUDING SUMP, PIPING, VALVES, ETC. EXCEPT 11.
7. DEMOLISH TO 50' PUMP SET INCLUDING SUMP, PIPING, VALVES, ETC. EXCEPT 11.
8. DEMOLISH TO 50' PUMP SET INCLUDING SUMP, PIPING, VALVES, ETC. EXCEPT 11.
9. DEMOLISH TO 50' PUMP SET INCLUDING SUMP, PIPING, VALVES, ETC. EXCEPT 11.
10. DEMOLISH TO 50' PUMP SET INCLUDING SUMP, PIPING, VALVES, ETC. EXCEPT 11.
11. DEMOLISH TO 50' PUMP SET INCLUDING SUMP, PIPING, VALVES, ETC. EXCEPT 11.
12. DEMOLISH TO 50' PUMP SET INCLUDING SUMP, PIPING, VALVES, ETC. EXCEPT 11.
13. DEMOLISH TO 50' PUMP SET INCLUDING SUMP, PIPING, VALVES, ETC. EXCEPT 11.
14. DEMOLISH TO 50' PUMP SET INCLUDING SUMP, PIPING, VALVES, ETC. EXCEPT 11.
15. DEMOLISH TO 50' PUMP SET INCLUDING SUMP, PIPING, VALVES, ETC. EXCEPT 11.

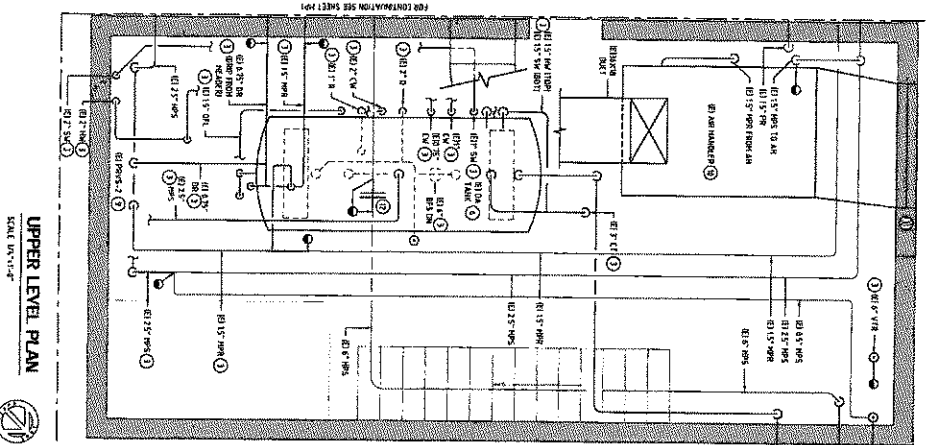


1 STEAM HEADER DEMOLITION  
SCALE 1/8" = 1'-0"





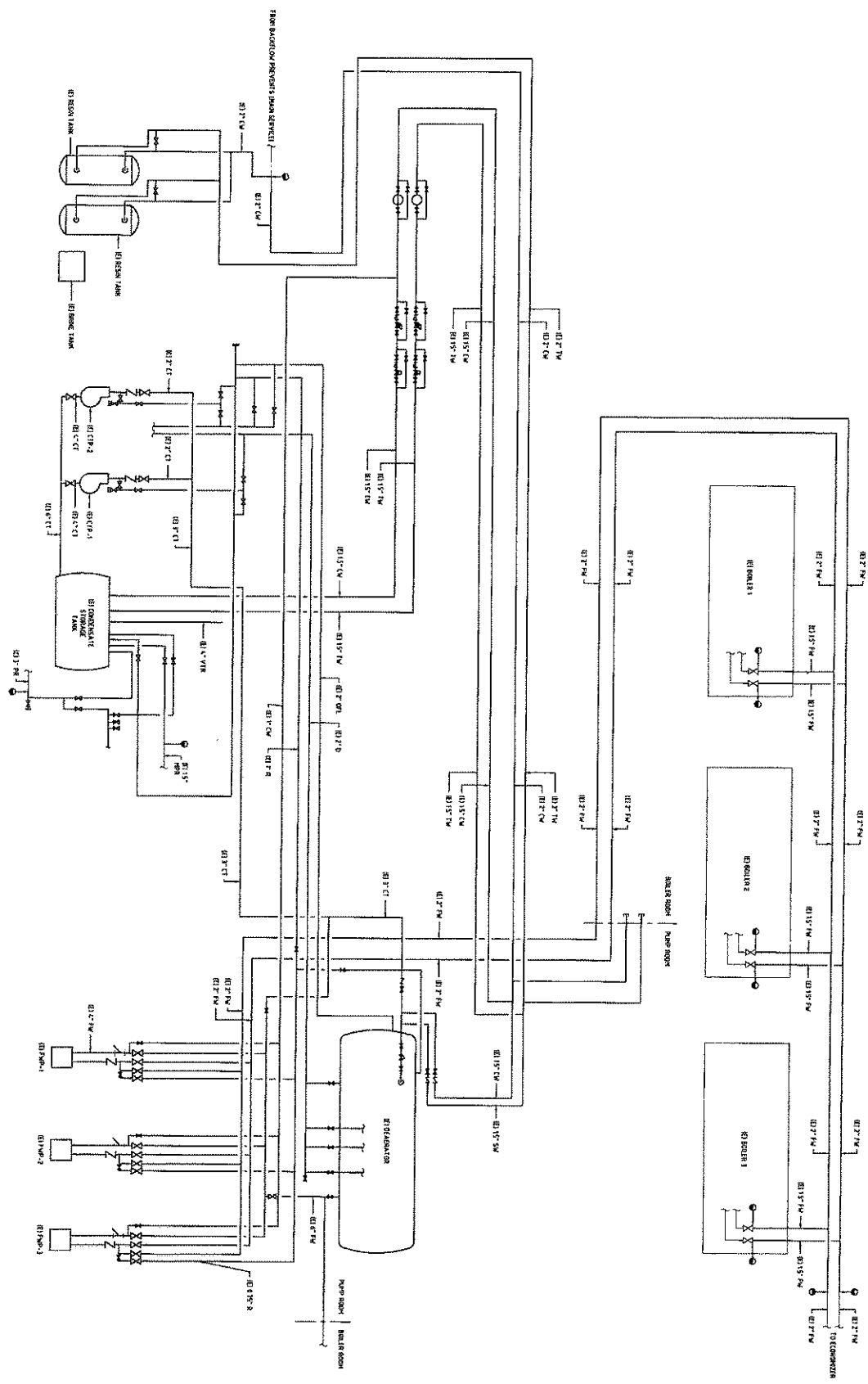
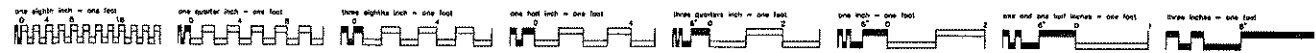
2 MAIN HPS PRE STATION DEMOLITION  
SCALE 1/8" = 1'-0"

CONSULTANTS:		SEAL:		ARCHITECT/ENGINEERS:		OWNER:		PROJECT:		DATE:	
						LANER CONTRACTING SERVICES, B		9-BOILER PLANT		6/7/15	
						CHANDLER, GA 30040		GRAND JUNCTION, COLORADO		1P	
						(570) 714-0720		MP1		BNA	
								Office of Construction and Facilities Management			



- [illegible]

CONSULTANTS:		SEAL:		ARCHITECT/ENGINEERS:		PROJECT TITLE		PROJECT NUMBER		PROJECT LOCATION		OFFICE OF	
				 LAMER CONTRACTING SERVICES 600 THREE EIGHTY ROAD, SUITE D WESTFIELD, NJ 07090 (908) 714-0720		DEMOLITION PARTIAL PLANS		BOILER CONTROLS		375-14-104		Construction	
						PROJECT DESCRIPTION		PROJECT PHASE		PROJECT PHASE		9 - BOILER PLANT	
						GROUND WATER CONTROL		LP		BVA		MP2	
						DATE		REV		REV		REV	
						8/1/15		1		2		3	
												Rev. 4 of 12	
												Office of Construction 9 - BOILER PLANT Facilities Management	
												Rev. 4 of 12	
												Rev. 4 of 12	
												Rev. 4 of 12	
												Rev. 4 of 12	
												Rev. 4 of 12	
												Rev. 4 of 12	
												Rev. 4 of 12	
												Rev. 4 of 12	
												Rev. 4 of 12	
												Rev. 4 of 12	
												Rev. 4 of 12	
												Rev. 4 of 12	
												Rev. 4 of 12	
												Rev. 4 of 12	
												Rev. 4 of 12	
												Rev. 4 of 12	
												Rev. 4 of 12	
												Rev. 4 of 12	
												Rev. 4 of 12	
												Rev. 4 of 12	
												Rev. 4 of 12	
												Rev. 4 of 12	
												Rev. 4 of 12	
												Rev. 4 of 12	
												Rev. 4 of 12	
												Rev. 4 of 12	
												Rev. 4 of 12	
												Rev. 4 of 12	
												Rev. 4 of 12	
												Rev. 4 of 12	
												Rev. 4 of 12	
												Rev. 4 of 12	
												Rev. 4 of 12	
												Rev. 4 of 12	
												Rev. 4 of 12	
												Rev. 4 of 12	
												Rev. 4 of 12	
												Rev. 4 of 12	
												Rev. 4 of 12	
												Rev. 4 of 12	
												Rev. 4 of 12	
												Rev. 4 of 12	
												Rev. 4 of 12	
												Rev. 4 of 12	
												Rev. 4 of 12	
												Rev. 4 of 12	
												Rev. 4 of 12	
												Rev. 4 of 12	
												Rev. 4 of 12	
												Rev. 4 of 12	
												Rev. 4 of 12	
												Rev. 4 of 12	
												Rev. 4 of 12	
												Rev. 4 of 12	
												Rev. 4 of 12	
												Rev. 4 of 12	
												Rev. 4 of 12	
												Rev. 4 of 12	
												Rev. 4 of 12	
												Rev. 4 of 12	
												Rev. 4 of 12	
												Rev. 4 of 12	



CONSULTANTS:

SEAL:

ARCHITECT/ENGINEERS:



LEAD CONTRACTING SERVICES  
500 PARK DRIVE ROAD, SUITE D  
DALLAS, TEXAS 75201  
(214) 714-0720

DEMOLITION DIAGRAM  
CONDENSATE AND FEEDWATER

BOILER CONTROLS

GRAND JUNCTION COLLEGE

6/1/15

MP3  
Page 5 of 12

Office of  
Construction  
and Facilities  
Management

