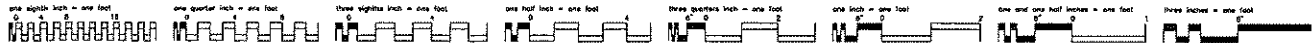
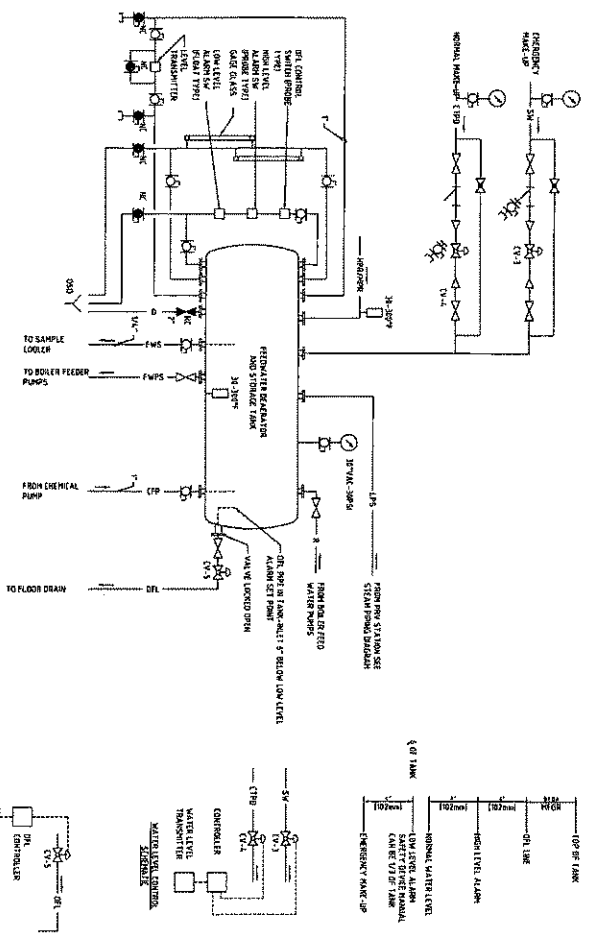


<b>CONSULTANTS:</b>					
<b>SFAL:</b>					
					
<b>ARCHITECT/ENGINEERS:</b>					
 LSC LAND CONTRACTING SERVICES 1401 N. HIGHWAY 100, SUITE B CHANDLER, AZ 85004 (602) 714-0720					
<b>DIAGRAMS</b>					
<b>BOLTER CONTROLS</b>					
					
<b>CARDINAL JUNCTION CORPORATION</b>					
					
<b>MP8</b>					
					
<b>Office of Construction and Facilities Management</b>					



1 DEARATOR PIPING DIAGRAM  
NOT TO SCALE



CONSULTANTS:		SEAL:		ARCHITECT/ENGINEERS:		DIAGRAMS		PROJECT NO.		SHEET NO.	
				  LAWRENCE S. CHAMBERLAIN LSC LAW							

**STEP 1** FILL THE STAGE CENTRIFUGAL PUMP WITH WATER. VFD: 42.00HZ @ 345 FT HEAD, 70 HP, 460V/3Ø

- Table 1. STAGE (CENTRIFUGAL PUMP W/INTERCAL) W/D 4.2 GPM @ 300 FT HEAD, 10 HP, 460V/3 $\phi$**

**FIGURE 1** Schematic representation of the experimental setup. The subject was seated at a distance of 60 cm from the screen. The target was located at a distance of 30 cm from the screen. The subject's hand was positioned at the starting point (SP) and moved towards the target (T). The movement was controlled by the computer system.

- Multi-Stage Commercial VFD 42 GPM @ 30 F Head 3 HP, 480V/3Ø

**CFPL3** 3/3 HP POSITIVE DISPLACEMENT PUMP, 120V/1TQ

- (FP-2) 1/3 HP POSITIVE DISIN. ACETENIT PLATE 126V/14

(S1.1) VERTICAL STORED STORAGE TANK 1750 GALLON CAPACITY 10000 GALLON CAPACITY USABLE STORAGE

- VENTRAL FIELD STORAGE TANK 3250 GALLON CAPACITY GROSS, FIVE 850 GALLON CAPACITY USABLE STORAGE VOLUME APPROXIMATE DIMENSIONS 9' DIAMETER X 9' HIGH SEE SPECIFICATIONS FOR TANK CONSTRUCTION AND ACCESSWAYS

DA-1  
SPELTY-TYPE DEGRADATION W/HORIZONTAL STEEL TUBES FOR 300 LB/HR CAPACITY, 5 PSIG OPERATING PRESSURE, 1000°C  
DO NOT CALL FOR CAPACITY IDEAS AT 1000°C

- PRICEABLE 104 GALLON CAPACITY USEABLE STORAGE VOLUME**

**PAV-1** ORFLEX AUTOMATIC SYSTEM, 2 HORIZONTAL TANKS, 1 PNEUM. TANK, 100-65 GPM CONTINUOUS FLOW CAPACITY

- ## DUPLEX FUEL OIL PUMP PACKAGE

**FCBP-1** DUPLEX FILL OIL PIPES WITH 115 GPM @ 100 PSIG PER EACH PUMP INTEGRATED CONTROL PANEL, PIPING, VALVES

- ## PRESSURE-REDUCING VALVE

399-1  
USE AL-100T PRESSURE RETURNING VALVE, MEET THE PRESS. OUTLET 30 PSI, MIN CAPACITY 9,000 LBS/MIN

- PSV-2**  
 4000 PSI PRESSURE REDUCING VALVE, INLET TO PSV, QUANTITY 40 PSV, MIN CAPACITY 6,000 LBS/HR

doi:10.1371/journal.pone.0142602.g002

# TYPICAL BOILER CURVE

## TYPICAL SCADA I/O

SEAL

LANIER CONTRACTING SERVICES  
500 PINKLE FERRY ROAD, SUITE #  
CUMMING, GA 30040  
(678) 714-0720

## SCHEDULES AND I/O LISTS

## Project Title

Project Number  
575-16-104

**Construction  
and Facilities  
Management**