

1. CODE REQUIRED AND WAYFINDING SIGN LOCATIONS ARE SHOWN ON SIGN LOCATION PLANS WITH SYMBOLS. SEE LEGEND BELOW.
2. FOR ROOM IDENTIFICATION SIGNS, PLEASE REFER TO THE ARCHITECTURAL ROOM NUMBER CENTERED IN EACH ROOM OR AREA ON SIGN LOCATION PLANS. THIS NUMBER IS CROSS REFERRED TO THE SIGN SCHEDULE WHICH IS LOCATED SECTION 10 14.00.
3. THE SIGN SCHEDULE INCLUDES ALL RELEVANT INFORMATION FOR EACH SIGN, INCLUDING: EXACT MESSAGE, SIGN TYPE AND LEVEL.
4. VERIFY ALL ROOM NAMES AND NUMBERS PRIOR TO FABRICATION.

S 123 SITE SIGN

W 123 WAYFINDING SIGN

C 123 CODE SIGN

Project Number	612-125
Building Number	

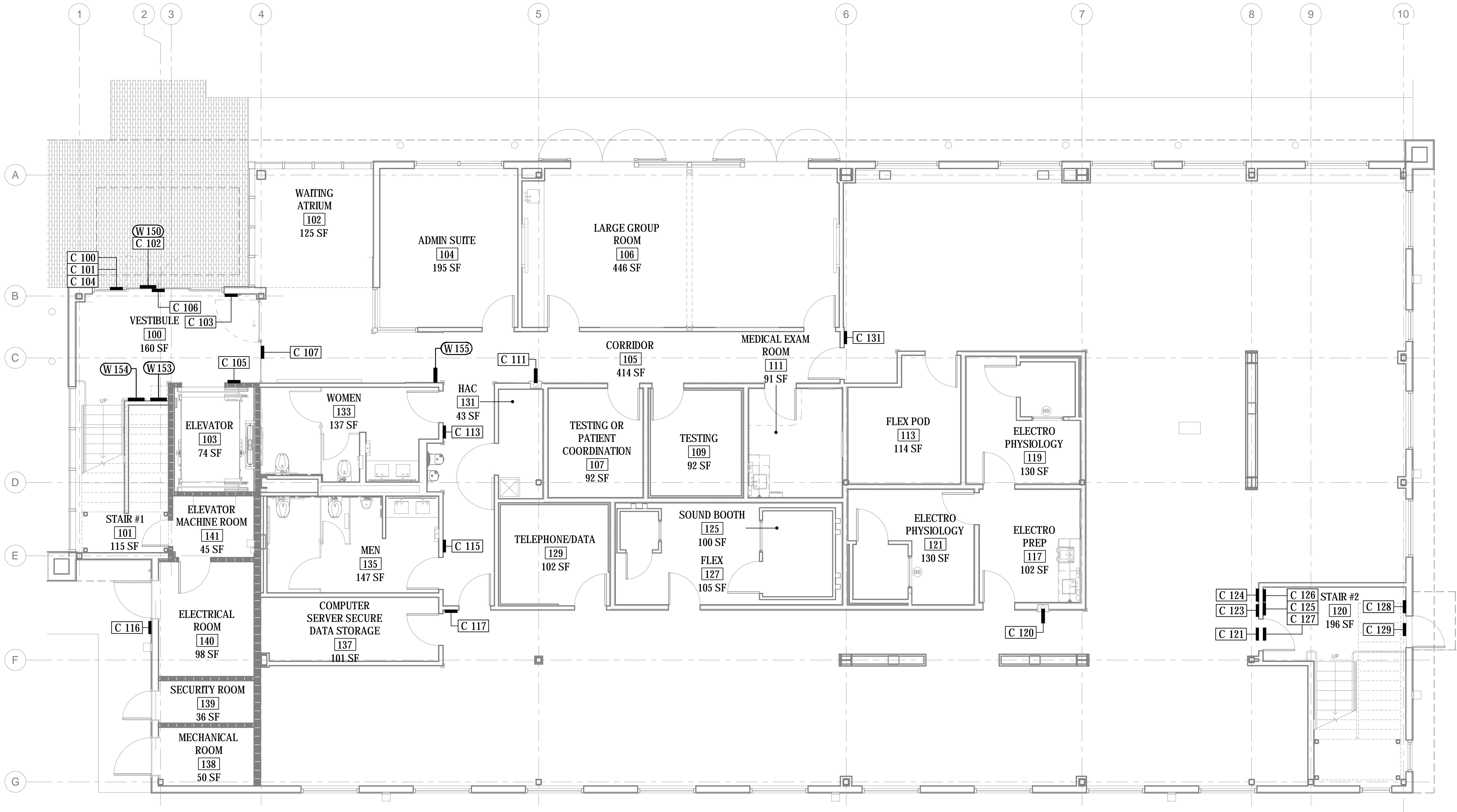
Drawing Number

AG100

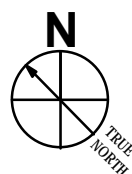
Office of
Construction
and Facilities
Management



one eighth inch = one foot
one quarter inch = one foot
three eighths inch = one foot
one half inch = one foot
one inch = one foot
three quarters inch = one foot
one and one half inches = one foot
two inches = one foot
three inches = one foot
four inches = one foot
five inches = one foot
six inches = one foot
seven inches = one foot
eight inches = one foot
nine inches = one foot
ten inches = one foot
eleven inches = one foot
twelve inches = one foot
thirteen inches = one foot
fourteen inches = one foot
fifteen inches = one foot
sixteen inches = one foot
seventeen inches = one foot
eighteen inches = one foot
nineteen inches = one foot
twenty inches = one foot
twenty one inches = one foot
twenty two inches = one foot
twenty three inches = one foot
twenty four inches = one foot
twenty five inches = one foot
twenty six inches = one foot
twenty seven inches = one foot
twenty eight inches = one foot
twenty nine inches = one foot
thirty inches = one foot
thirty one inches = one foot
thirty two inches = one foot
thirty three inches = one foot
thirty four inches = one foot
thirty five inches = one foot
thirty six inches = one foot
thirty seven inches = one foot
thirty eight inches = one foot
thirty nine inches = one foot
forty inches = one foot
forty one inches = one foot
forty two inches = one foot
forty three inches = one foot
forty four inches = one foot
forty five inches = one foot
forty six inches = one foot
forty seven inches = one foot
forty eight inches = one foot
forty nine inches = one foot
fifty inches = one foot
fifty one inches = one foot
fifty two inches = one foot
fifty three inches = one foot
fifty four inches = one foot
fifty five inches = one foot
fifty six inches = one foot
fifty seven inches = one foot
fifty eight inches = one foot
fifty nine inches = one foot
sixty inches = one foot
sixty one inches = one foot
sixty two inches = one foot
sixty three inches = one foot
sixty four inches = one foot
sixty five inches = one foot
sixty six inches = one foot
sixty seven inches = one foot
sixty eight inches = one foot
sixty nine inches = one foot
seventy inches = one foot
seventy one inches = one foot
seventy two inches = one foot
seventy three inches = one foot
seventy four inches = one foot
seventy five inches = one foot
seventy six inches = one foot
seventy seven inches = one foot
seventy eight inches = one foot
seventy nine inches = one foot
eighty inches = one foot
eighty one inches = one foot
eighty two inches = one foot
eighty three inches = one foot
eighty four inches = one foot
eighty five inches = one foot
eighty six inches = one foot
eighty seven inches = one foot
eighty eight inches = one foot
eighty nine inches = one foot
ninety inches = one foot
ninety one inches = one foot
ninety two inches = one foot
ninety three inches = one foot
ninety four inches = one foot
ninety five inches = one foot
ninety six inches = one foot
ninety seven inches = one foot
ninety eight inches = one foot
ninety nine inches = one foot
one hundred inches = one foot



1 SIGN LOCATION PLAN - FIRST FLOOR
1/4" = 1'-0"



SHEET NOTES

1. CODE REQUIRED AND WAYFINDING SIGN LOCATIONS ARE SHOWN ON SIGN LOCATION PLANS WITH SYMBOLS. SEE LEGEND BELOW.
2. FOR ROOM IDENTIFICATION SIGNS, PLEASE REFER TO THE ARCHITECTURAL ROOM NUMBER CENTERED IN EACH ROOM OR AREA ON SIGN LOCATION PLANS. THIS NUMBER IS CROSS REFERENCED TO THE SIGN SCHEDULE WHICH IS LOCATED SECTION 10 14 00.
3. THE SIGN SCHEDULE INCLUDES ALL RELEVANT INFORMATION FOR EACH SIGN, INCLUDING: EXACT MESSAGE, SIGN TYPE AND LEVEL.
4. VERIFY ALL ROOM NAMES AND NUMBERS PRIOR TO FABRICATION.

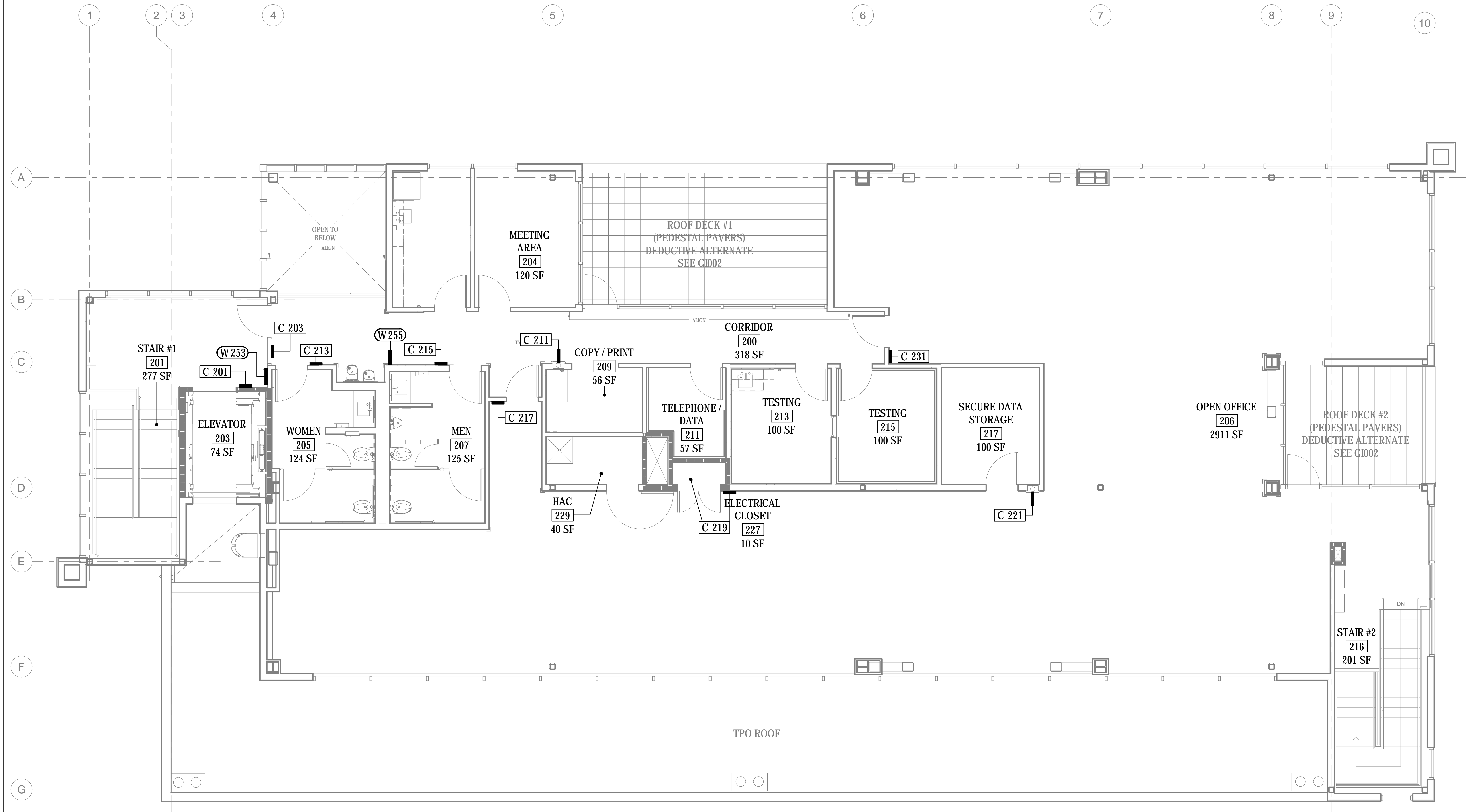
KEY NOTES

LEGEND


- C 123 CODE SIGN
W 123 WAYFINDING SIGN

100% CONSTRUCTION DOCUMENT SUBMISSION
APRIL 20, 2015

		CONSULTANTS:				ARCHITECT		Drawing Title FIRST FLOOR SIGN LOCATION PLAN - NEW TBI BUILDING		Project Title NEUROCOG TBI RESEARCH BUILDING / BUILDING R4 DEMOLITION / NEW PARKING LOT		Project Number 612-125		Office of Construction and Facilities Management			
		 Kate Keating Associates, Inc. 1045 Sansome Street, Suite 202 San Francisco, CA 94111 415-773-1000 Fax 773-1000 city@kka-inc.com				 POLYTECH ASSOCIATES INC. 235 Pine Street, 17th Floor San Francisco, CA 94104 TEL (415) 397-3117 FAX (415) 397-1517				Building Number							
								Approved: Project Director		Location 150 MUIR ROAD, MARTINEZ, CA 94553		Drawing Number AG101					
										Date 4/20/2015		Checked JD		Drawn JD		Department of Veterans Affairs	



A compass rose with a circle divided into four quadrants by a vertical and horizontal line. The letter 'N' is at the top. A diagonal line from the center to the top-left quadrant has an arrowhead pointing towards the top-left. The text 'TRUE NORTH' is written along this diagonal line, with 'TRUE' above 'NORTH'.

CONSULTANTS:	
	<p>Kato Keating Associates, Inc. 1005 Sansome Street, Suite 202 San Francisco, CA 94111 415.773.1000 Fax: 773.1006 city@kkainc.com</p>

Drawing Title
SECOND FLOOR SIGN LOCATION PLAN - NEW TBI BUILDING
Approved: Project Director

Office of
Construction
and Facilities
Management

 Department of
Veterans Affairs

KEY NOTES

100% CONSTRUCTION DOCUMENT SUBMISSION
APRIL 20, 2015