

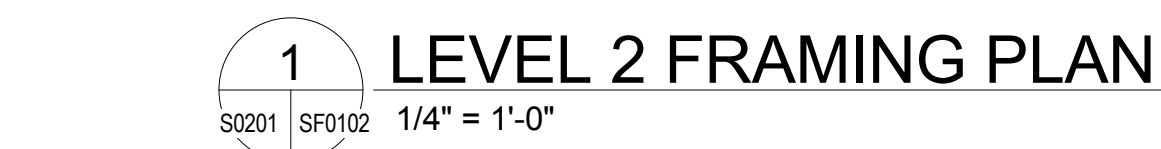


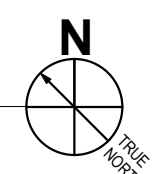
Department of
Veterans Affairs

S0201	SF0101	1/4" = 1'-0'
-------	--------	--------------

SF0101

Drawing Number





S0201	SF0103	1/4" = 1'-0"
-------	--------	--------------

 Department of
Veterans Affairs

Drawn	JT
-------	----

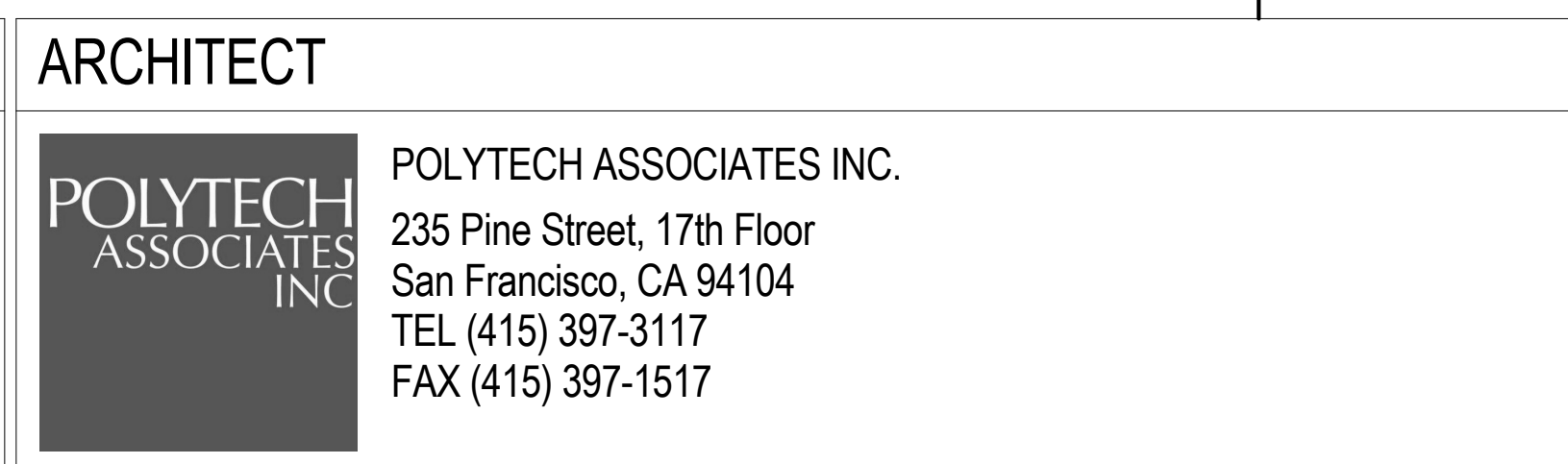
Revisions




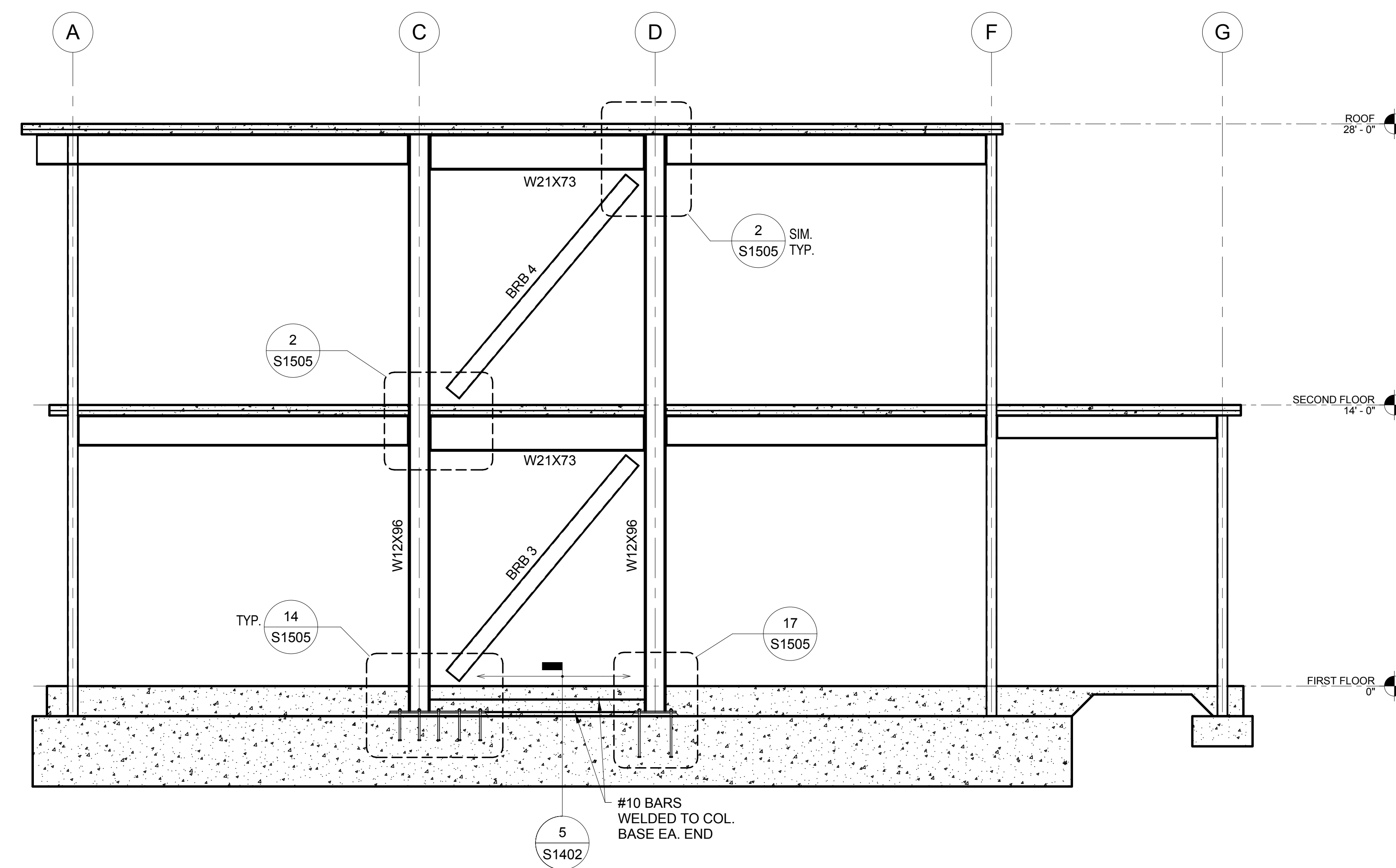
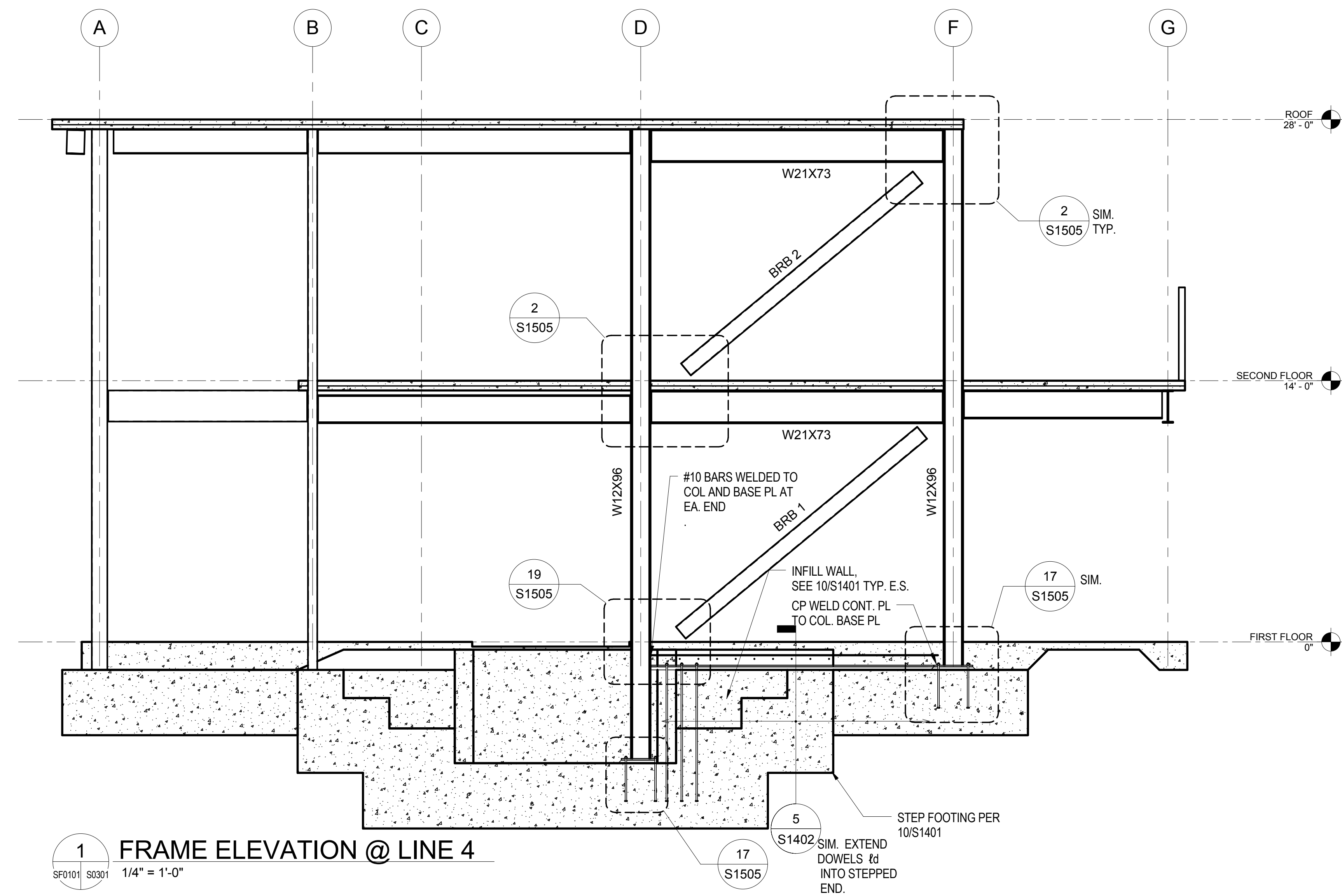
CONSULTANTS:

 **Degenkolb**

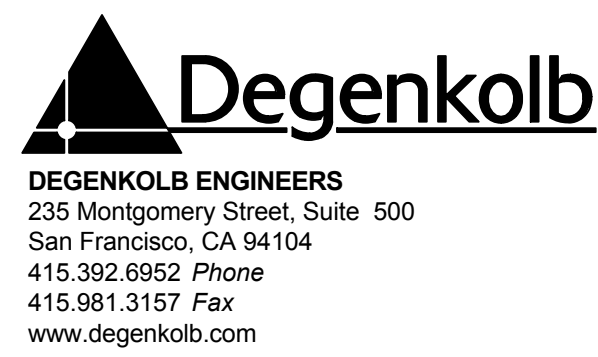
DEGENKOLB ENGINEERS
255 Montgomery Street, Suite 500
San Francisco, CA 94104
415.392.6952 Phone
415.981.5157 Fax
www.degenkolb.com



<div>Drawing Title</div> <div>DEDUCT ALT. PARTIAL PLANS</div>	<div>Project Title</div> <div>VA MARTINEZ TBI</div>			<div>Project Number</div> <div>612-125</div>	<div>Office of Construction and Facilities Management</div> <div> Department of Veterans Affairs</div>		
				<div>Building Number</div>			
<div>Approved: Project Director</div>	<div>Location</div> <div>150 MUJR ROAD, MARTINEZ, CA 94553</div>			<div>Drawing Number</div> <div>SF0104</div>			
				<div>Date</div> <div>20 MARCH 2015</div>		<div>Checked</div> <div>RG</div>	<div>Drawn</div> <div>JT</div>

[illegible]

CONSULTANTS:



ARCHITECT



POLYTECH ASSOCIATES INC.
235 Pine Street, 17th Floor
San Francisco, CA 94104
TEL (415) 397-3117
FAX (415) 397-1517

Drawing Title
ELEVATIONS

ELEVATIONS

Approved: Project Director

Project Title	VA MARTINEZ TBI
---------------	-----------------

VA MARTINEZ TBI

Location	150 MUIR ROAD, MARTINEZ, CA 94553
----------	-----------------------------------

150 MUIR ROAD, MARTINEZ, CA 94553

Date
20 MARCH 2015

20 MARCH 2015

Checked
RG

RG

Drawn
JT

JT

Project Number	612-125
----------------	---------

612-125

Building Number

Drawing Number

S0301

100% CONSTRUCTION DOCUMENT
APRIL 20, 2015

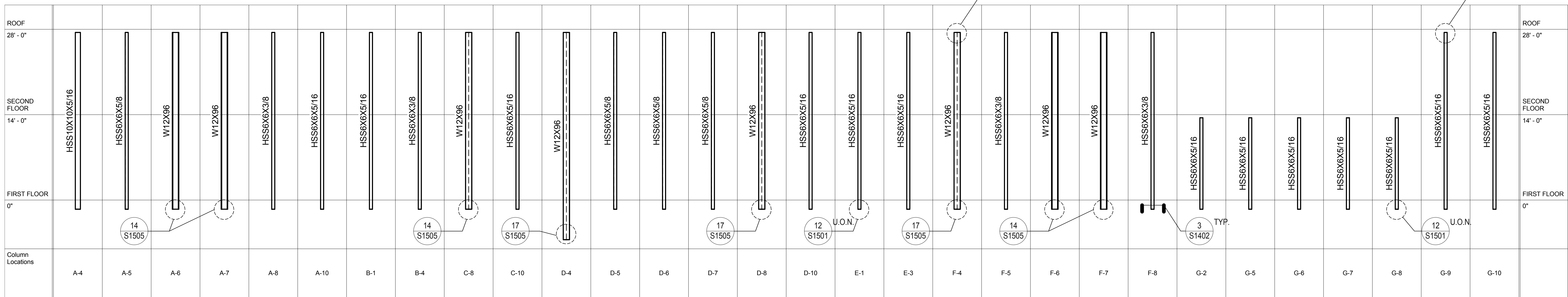
Office of
Construction
and Facilities
Management





Office of
Construction
and Facilities
Management

 Department of
Veterans Affairs



Department of
Veterans Affairs

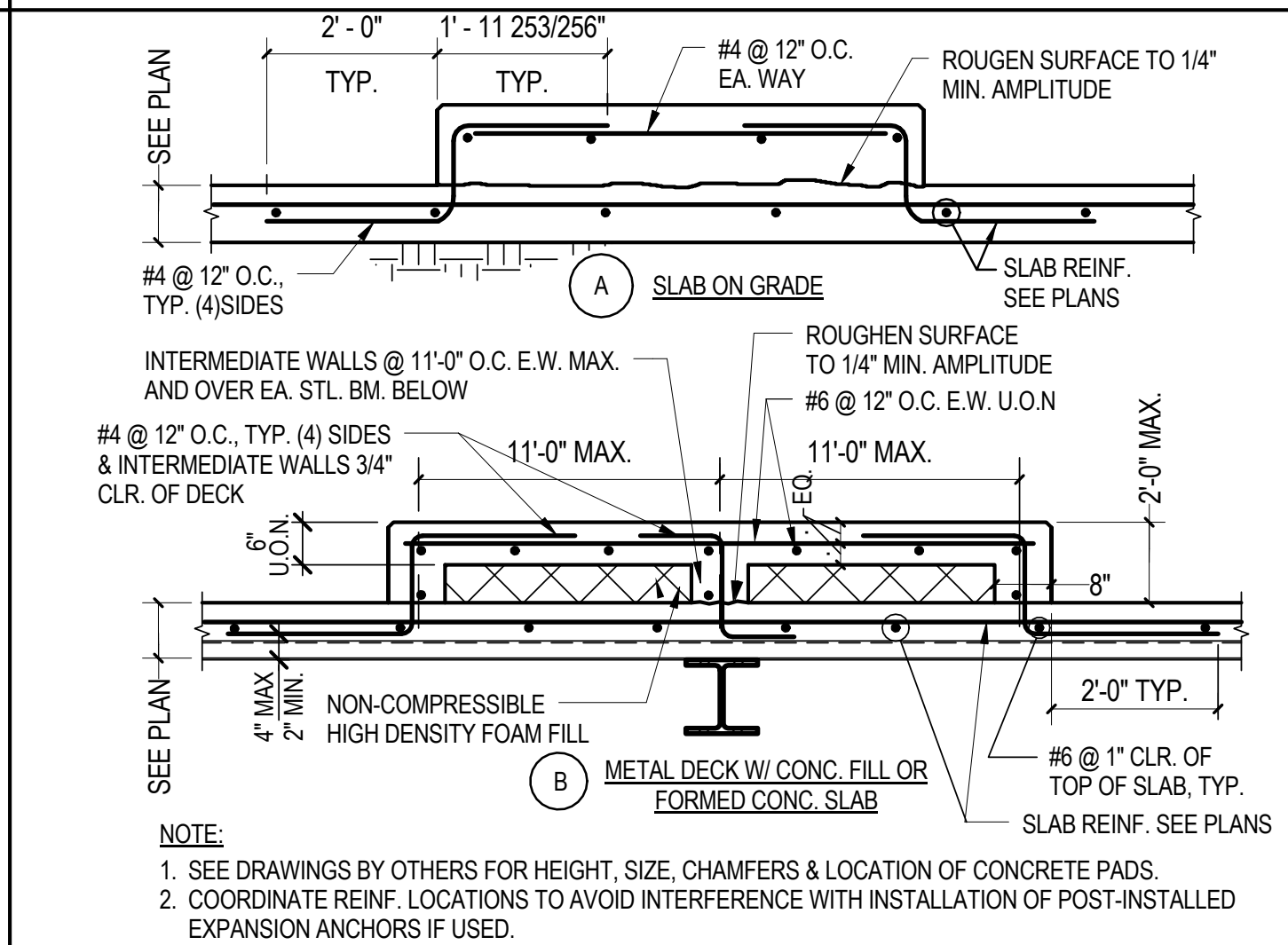
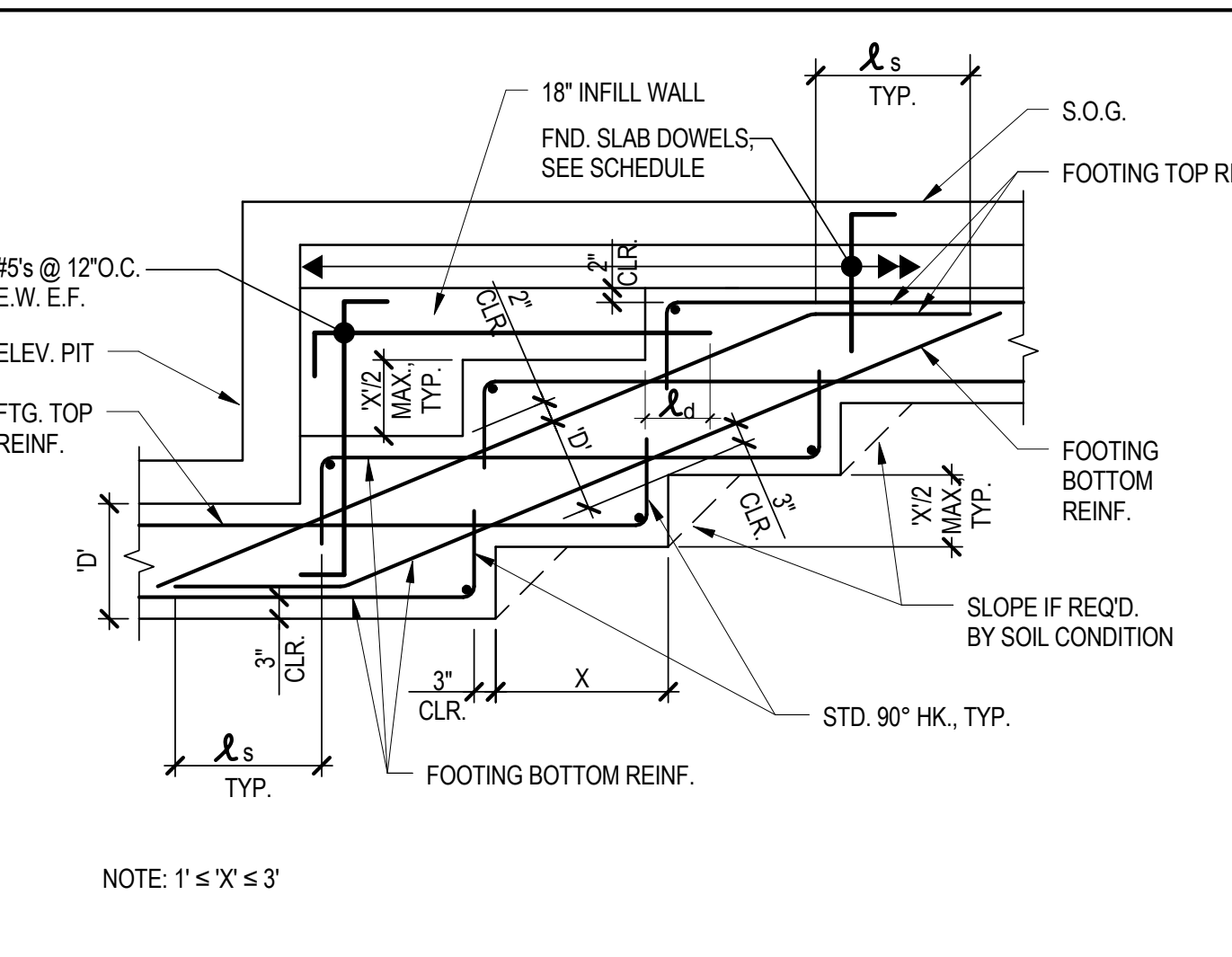
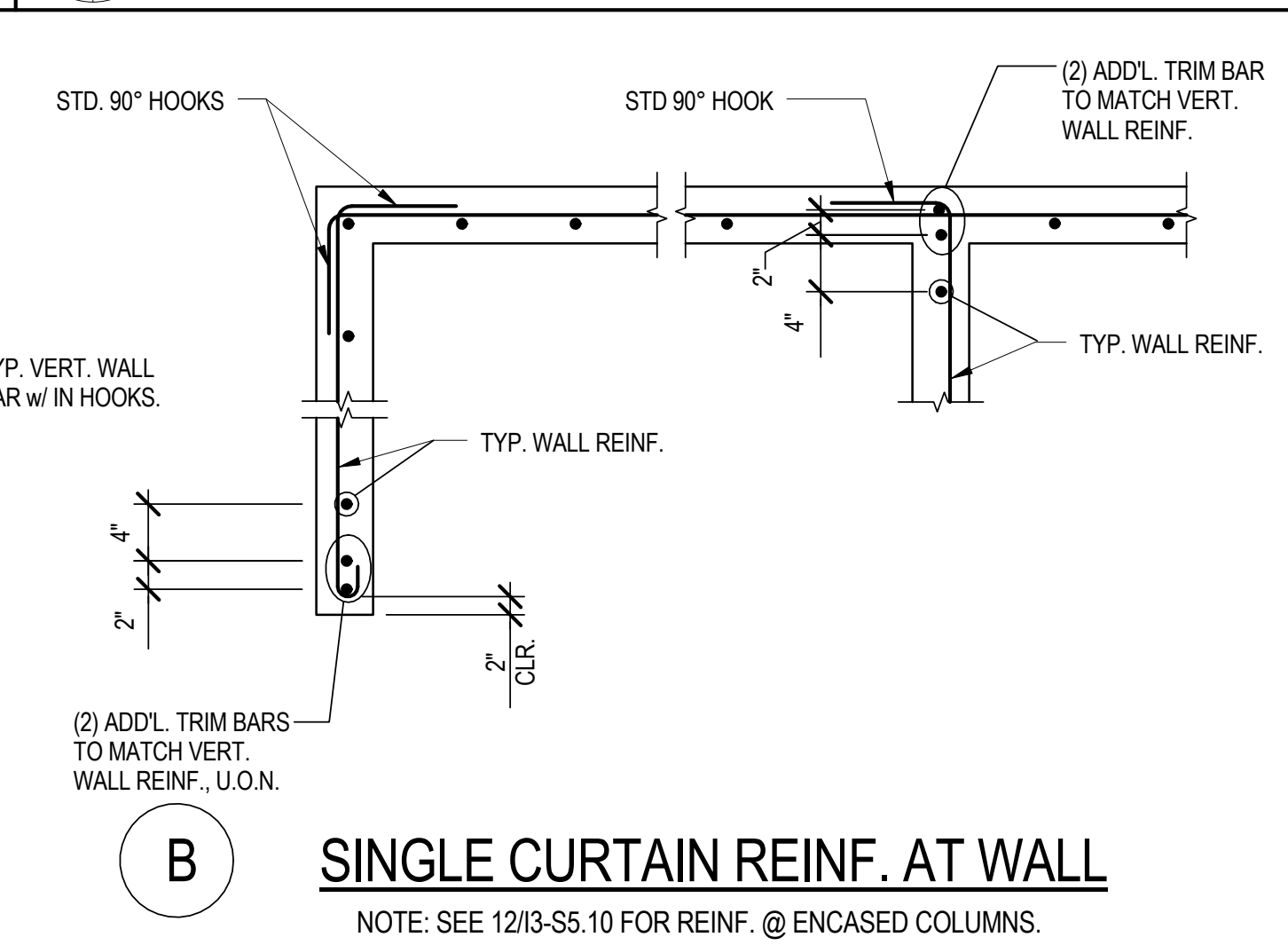
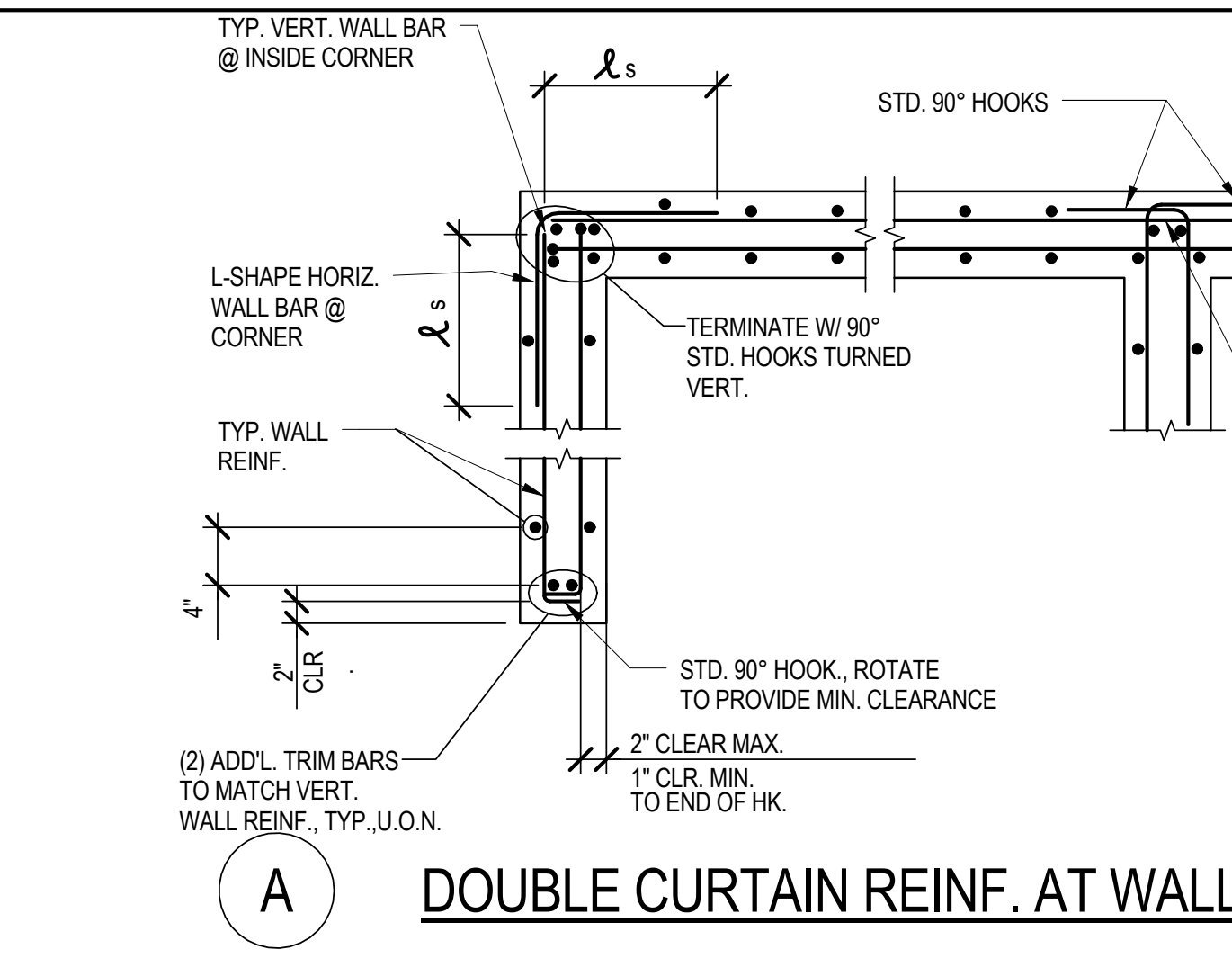
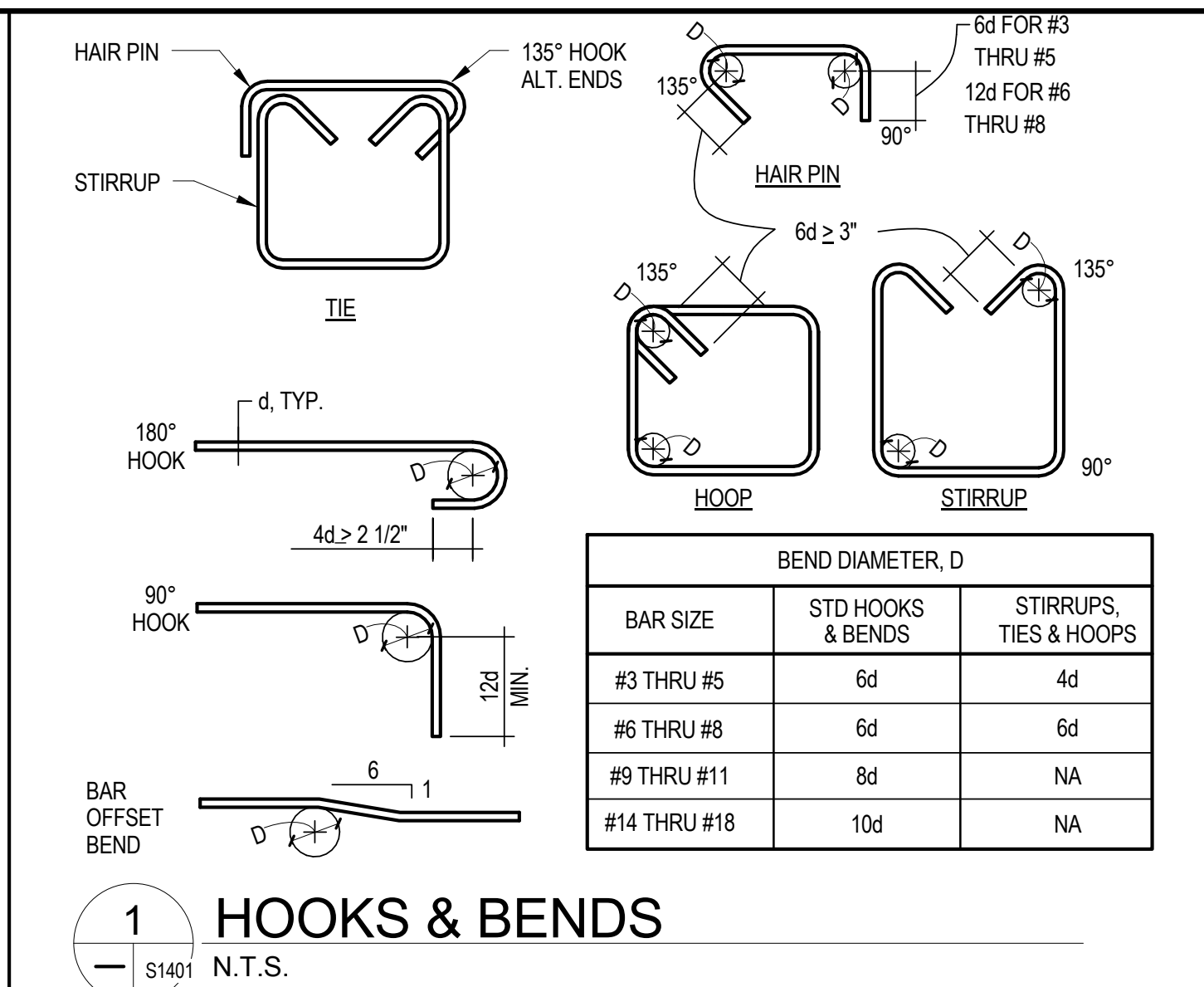
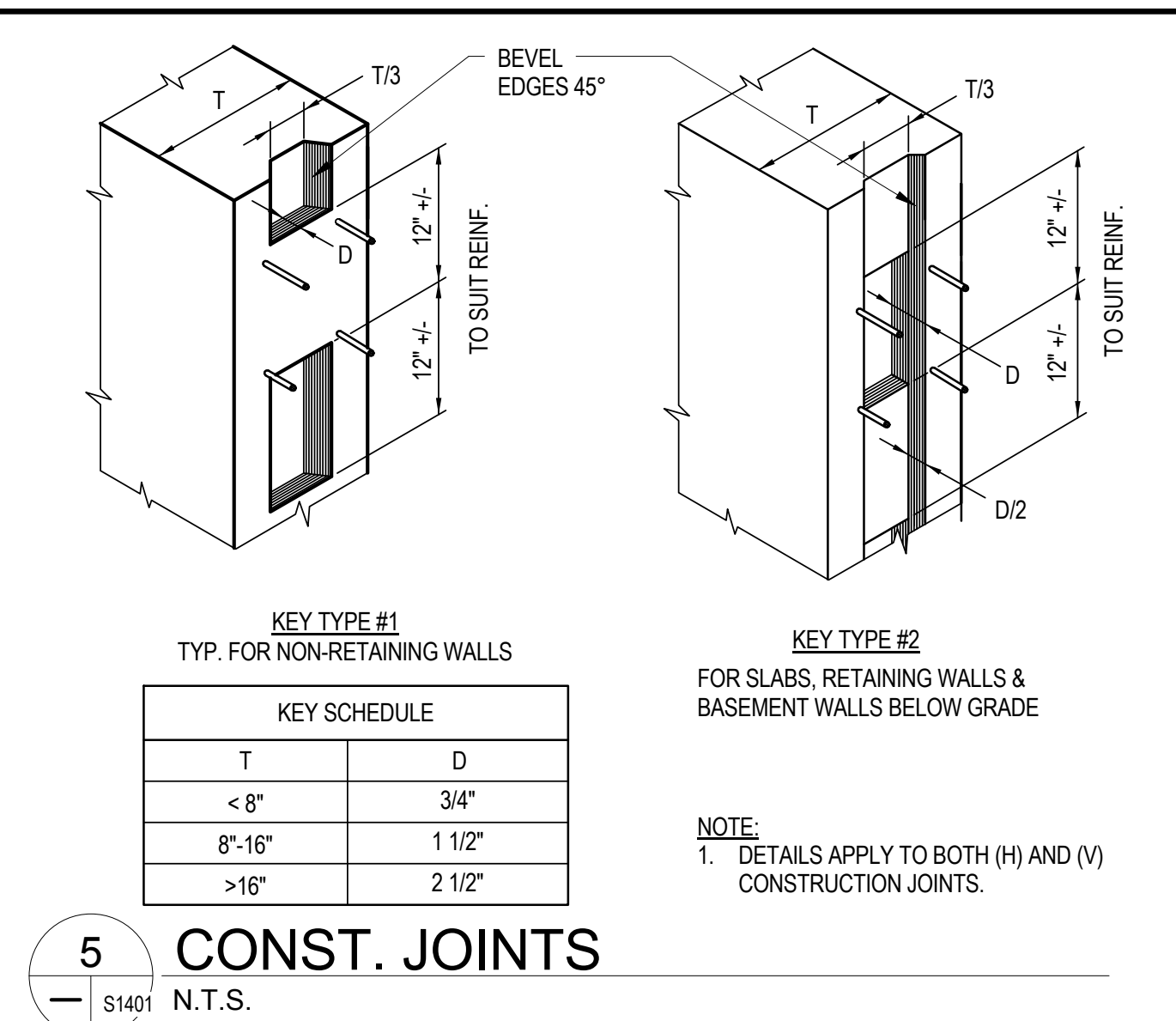
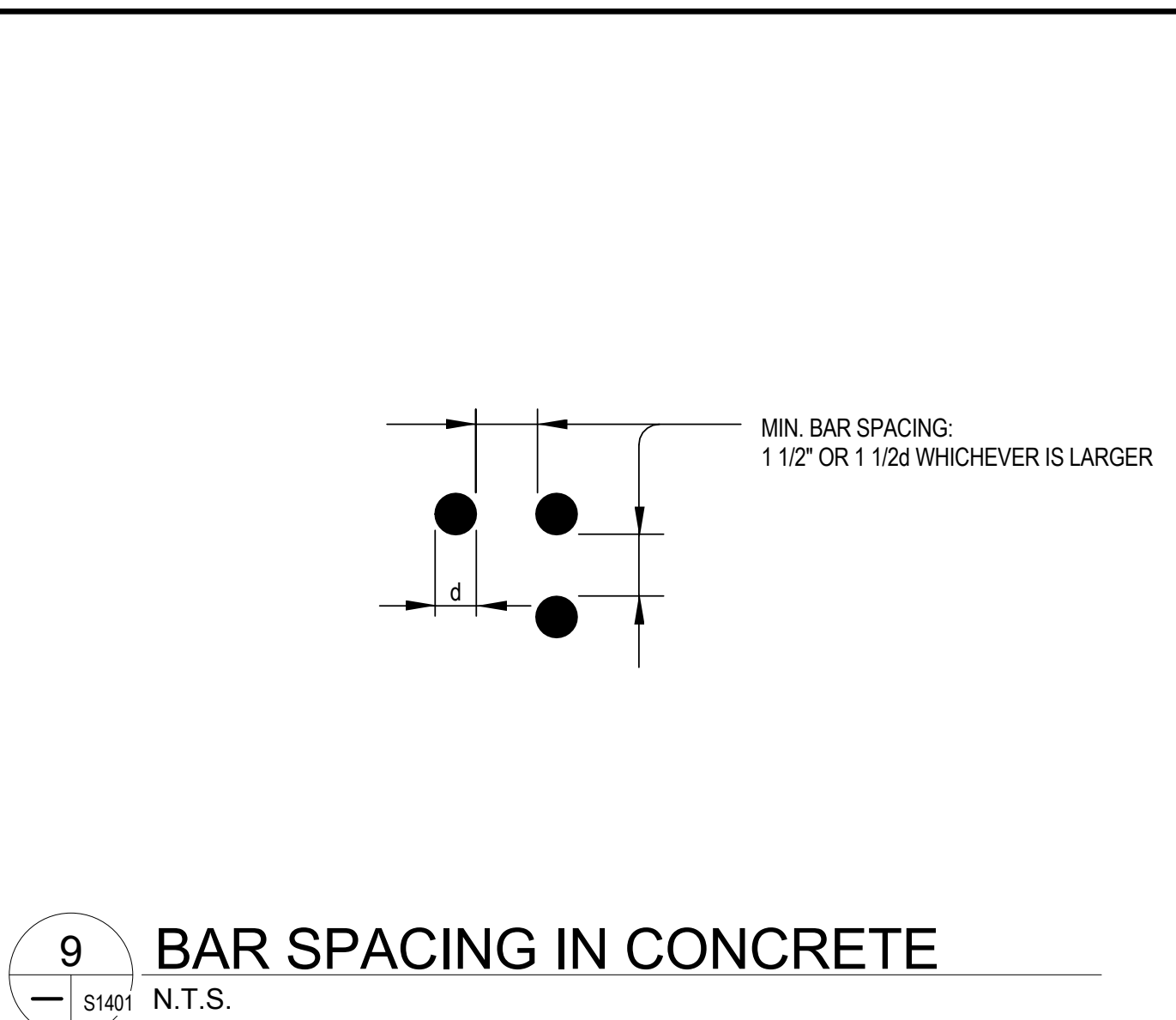
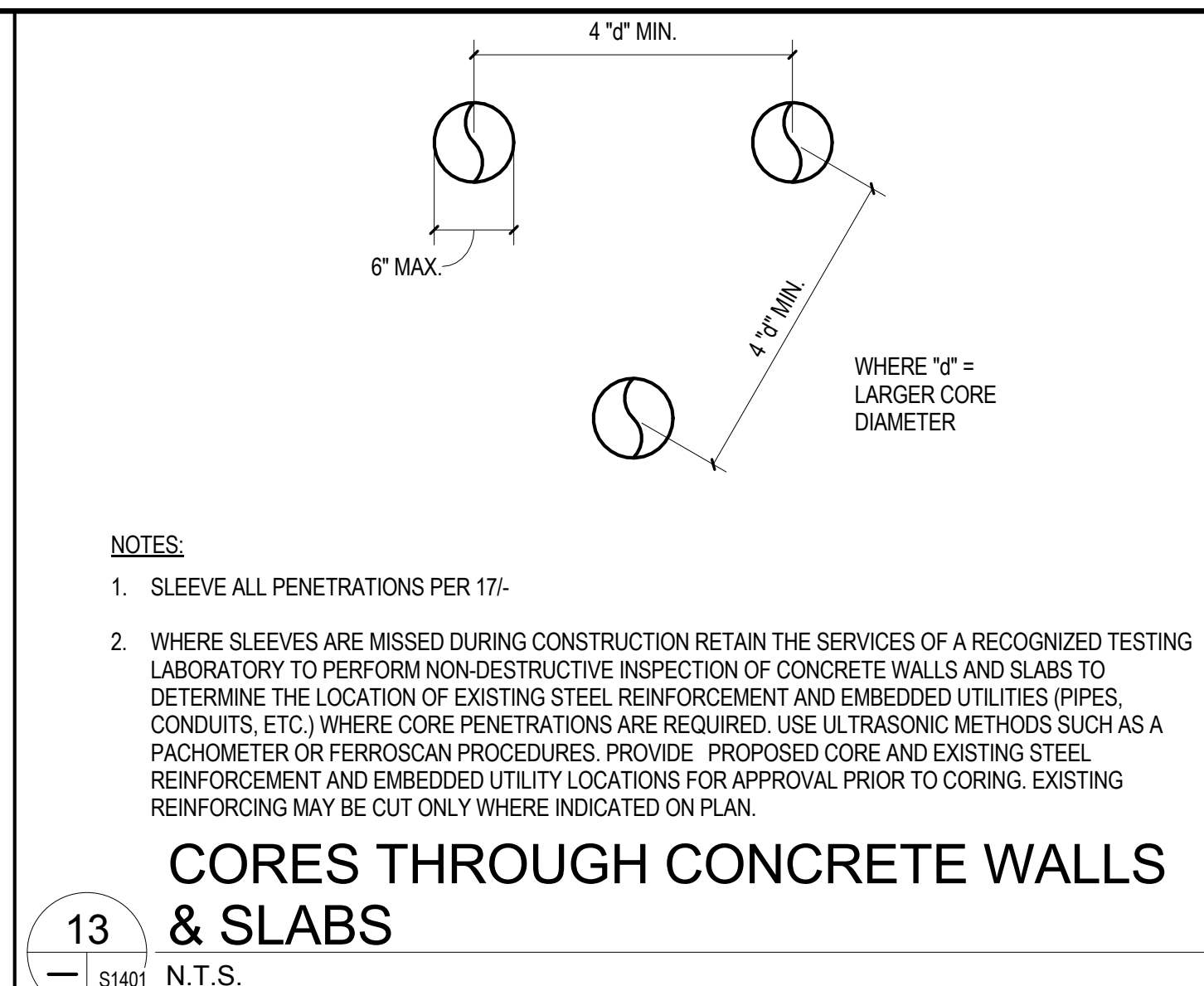
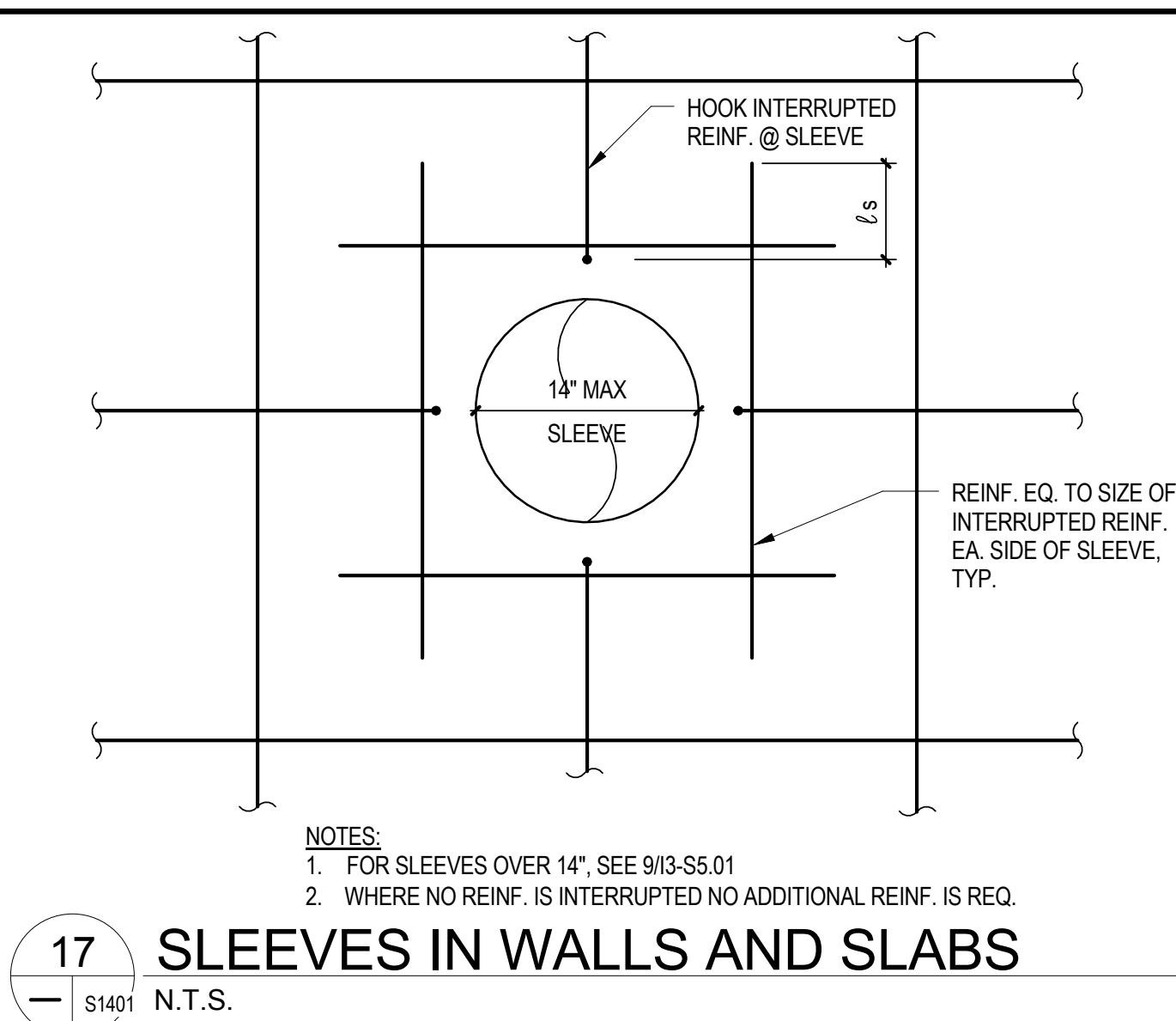
DEGENKOLB ENGINEERS
235 Montgomery Street, Suite 500
San Francisco, CA 94104
415.392.6952 Phone
415.981.3157 Fax
www.degenkolb.com



POLYTECH ASSOCIATES INC.
235 Pine Street, 17th Floor
San Francisco, CA 94104
TEL (415) 397-3117
FAX (415) 397-1517

Approved: Project Director

Drawn
JT



18

\$1401

1" = 1'-0"

WALL REINFORCEMENT

REINFORCING DEVELOPMENT AND SPLICE LENGTHS																																																		
BAR LOCATION	TYPE	CONCRETE MIN. STRENGTH																																																
			3			4			5			6			7			8			9			10			11																							
			ld	ls	ldh	ld	ls	ldh	ld	ls	ldh	ld	ls	ldh	ld	ls	ldh	ld	ls	ldh	ld	ls	ldh	ld	ls	ldh	ld	ls	ldh	ld	ls	ldh	ld	ls	ldh	ld	ls	ldh												
FOOTING TOP AND WALL HORIZONTAL REINF.	NWC	4 KSI	14	18	7	20	26	9	31	40	12	44	57	14	59	77	17	78	101	19	99	129	21	126	164	24	154	200	26	-	-	-	-	-	-	-	-	-	-	-	-									
FOOTING BOTTOM, WALL VERTICAL, SLAB ON GRADE, AND CURB	NWC	4 KSI	12	16	7	15	20	9	24	31	12	34	44	14	46	60	17	60	78	19	76	99	21	97	126	24	119	155	26	-	-	-	-	-	-	-	-	-	-	-	-									
LWC ON DECK	NWC	4 KSI	16	20	9	20	25	12	31	41	15	44	57	18	60	78	22	78	101	25	99	128	28	126	164	31	155	201	34	-	-	-	-	-	-	-	-	-	-	-	-									

NOTES:

1. λ_d = DEVELOPMENT LENGTH

λ_s = LAP SPlice LENGTH

λ_{dh} = HOOK DEVELOPMENT LENGTH

2. WHEN SPLICING BARS OF DIFFERENT SIZE, USE LAP SPlice LENGTH OF LARGER BAR, U.O.N.

3. STAGGER SPLICES AS INDICATED ON DRAWINGS.

COUPLER OR WELDED SPLICE

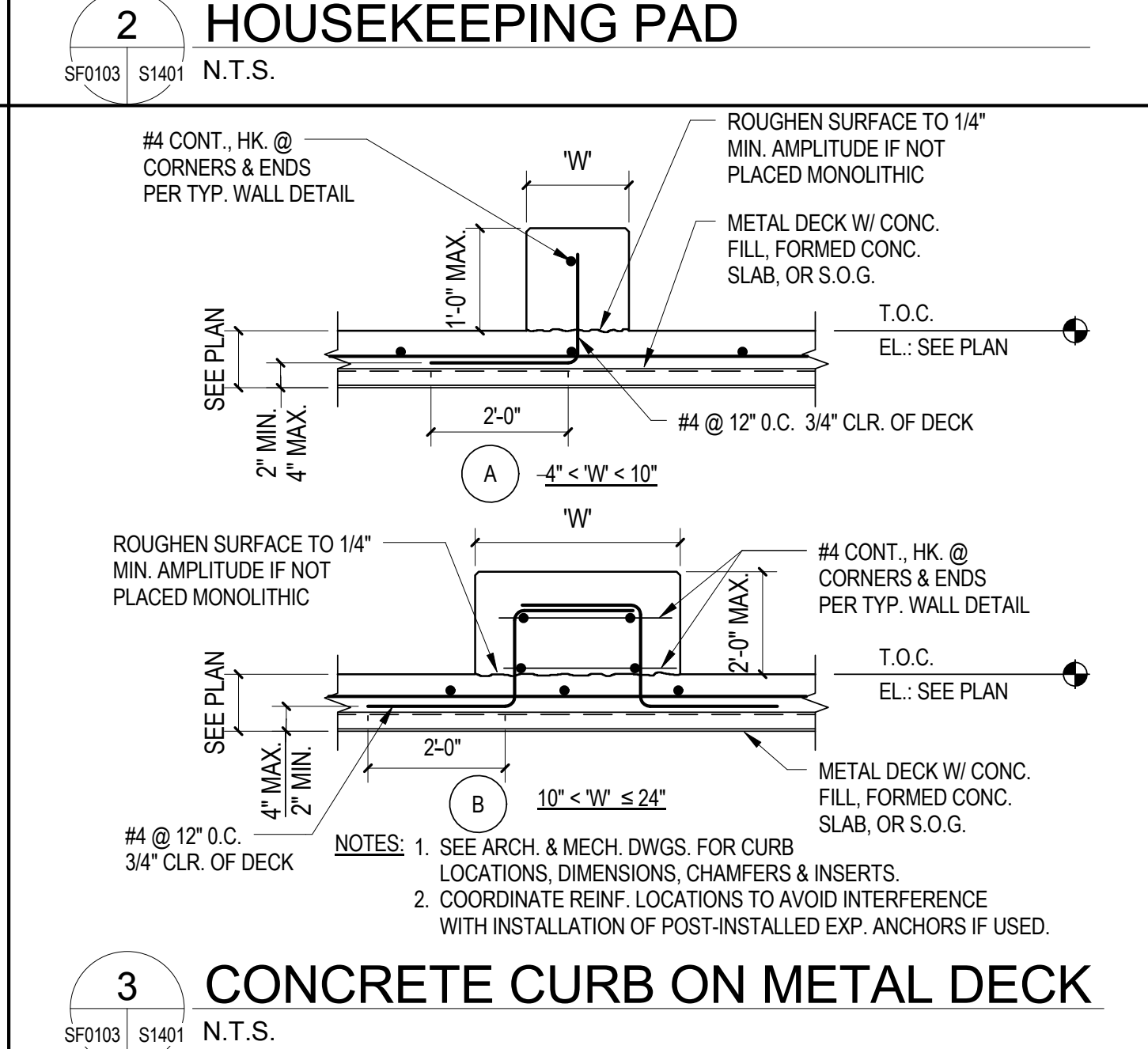
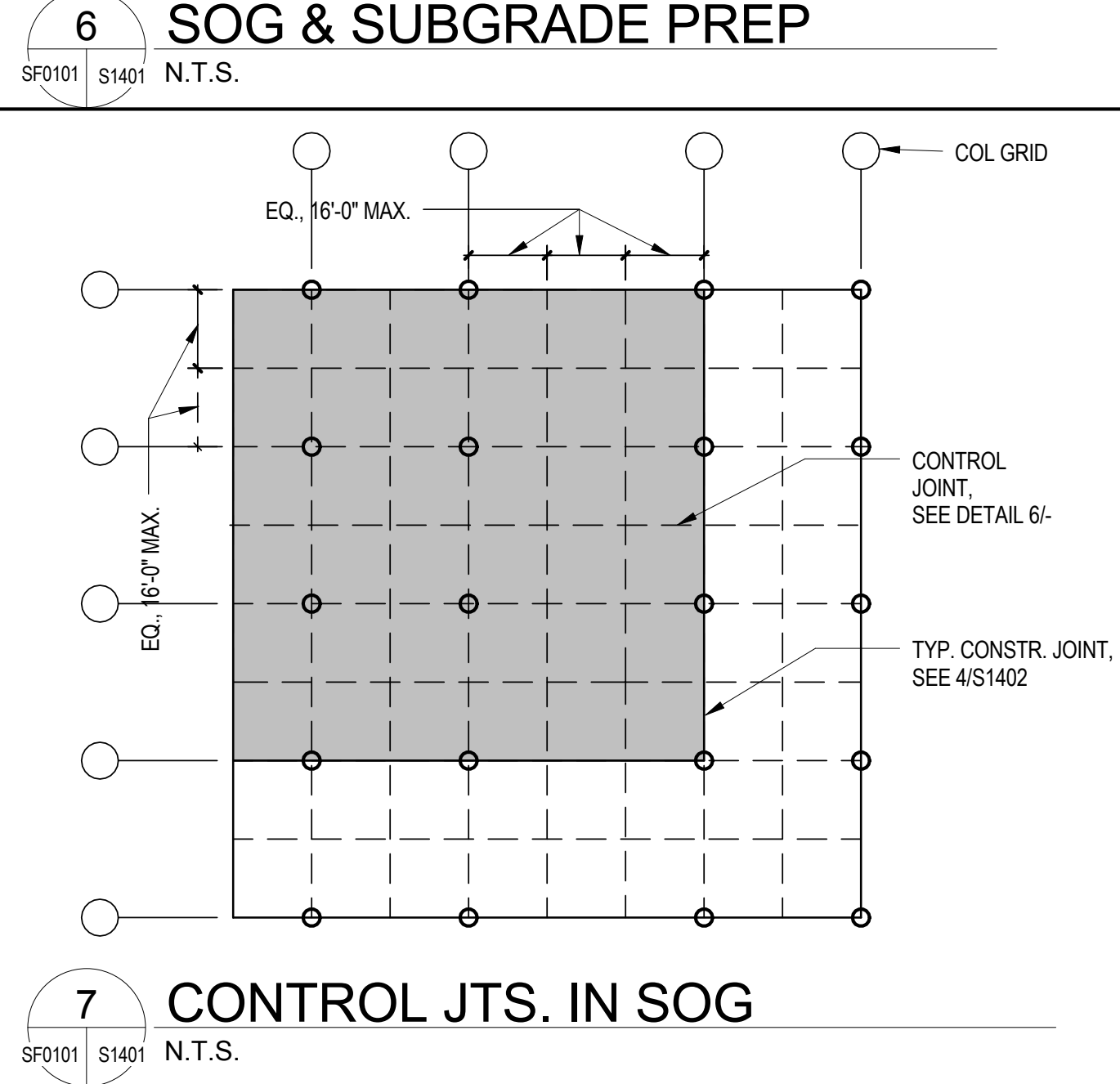
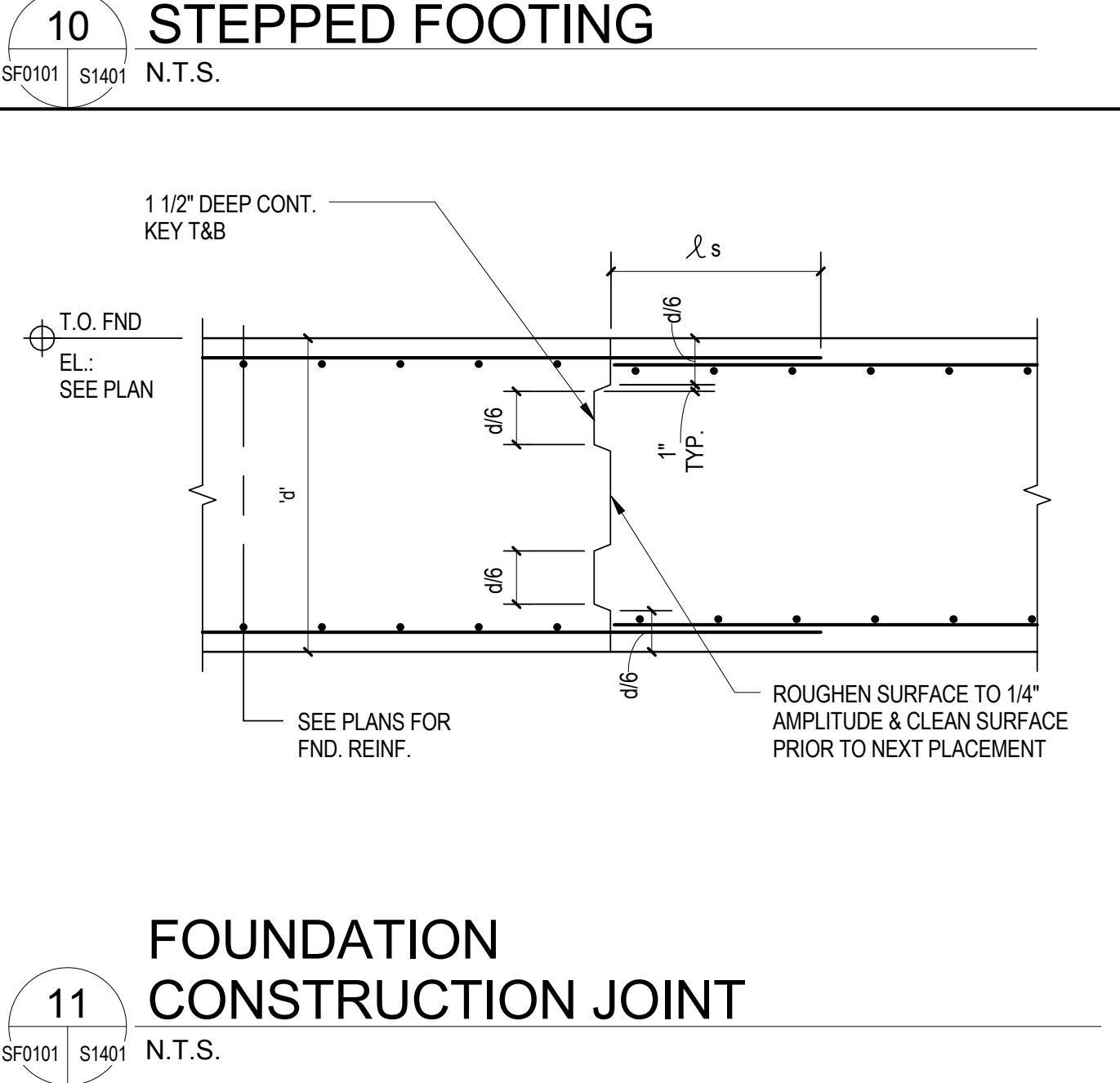
4. MULTIPLY THE ABOVE LENGTHS BY 1.5 FOR EPOXY COATED REINF.

19

\$1401

N.T.S.

REINFORCEMENT DEVELOPMENT



FOOTING SCHEDULE										
MARK	'H' DEPTH SEE NOTE	'B' LENGTH	'D' WIDTH	BOTTOM REINFORCING		TOP REINFORCING		SLAB DOWELS	DETAIL	REMARKS
				LONG.	TRANSVERSE	LONG.	TRANSVERSE			
F1	1'-6"	3'-0"	3'-0"	4-#6	4-#6	-	-	#4 @ 18" O.C.	12'-	
F2	1'-6"	4'-0"	4'-0"	5-#6	5-#6	-	-	#4 @ 18" O.C.	12'-	
F3	1'-6"	5'-0"	5'-0"	6-#7	6-#7	-	-	#4 @ 18" O.C.	12'-	
CF1	4'-0"	N/A	6'-0"	11-#9	SEE A-A	11-#9	SEE A-A	#4 @ 18" O.C.	12'-, SIM.	TERMINATE BARS W/ T-HEAD @ END OF FND.
CF2	4'-0"	N/A	6'-0"	14-#10	SEE A-A	14-#10	SEE A-A	#4 @ 18" O.C.	12'-, SIM.	

NOTE: 'H' IS MINIMUM DEPTH PER FOUNDATION AND SITE NOTE 9 SS001.
FOUNDATIONS SHALL EXTEND A MINIMUM OF 12" INTO COMPETENT
BEDROCK. OVEREXCAVATION MAY BE BACKFILLED WITH LEAN CONCRETE,
STRUCTURAL CONCRETE, OR CONTROLLED DENSITY FILL IN ACCORDANCE
WITH GEOTECHNICAL REPORT.

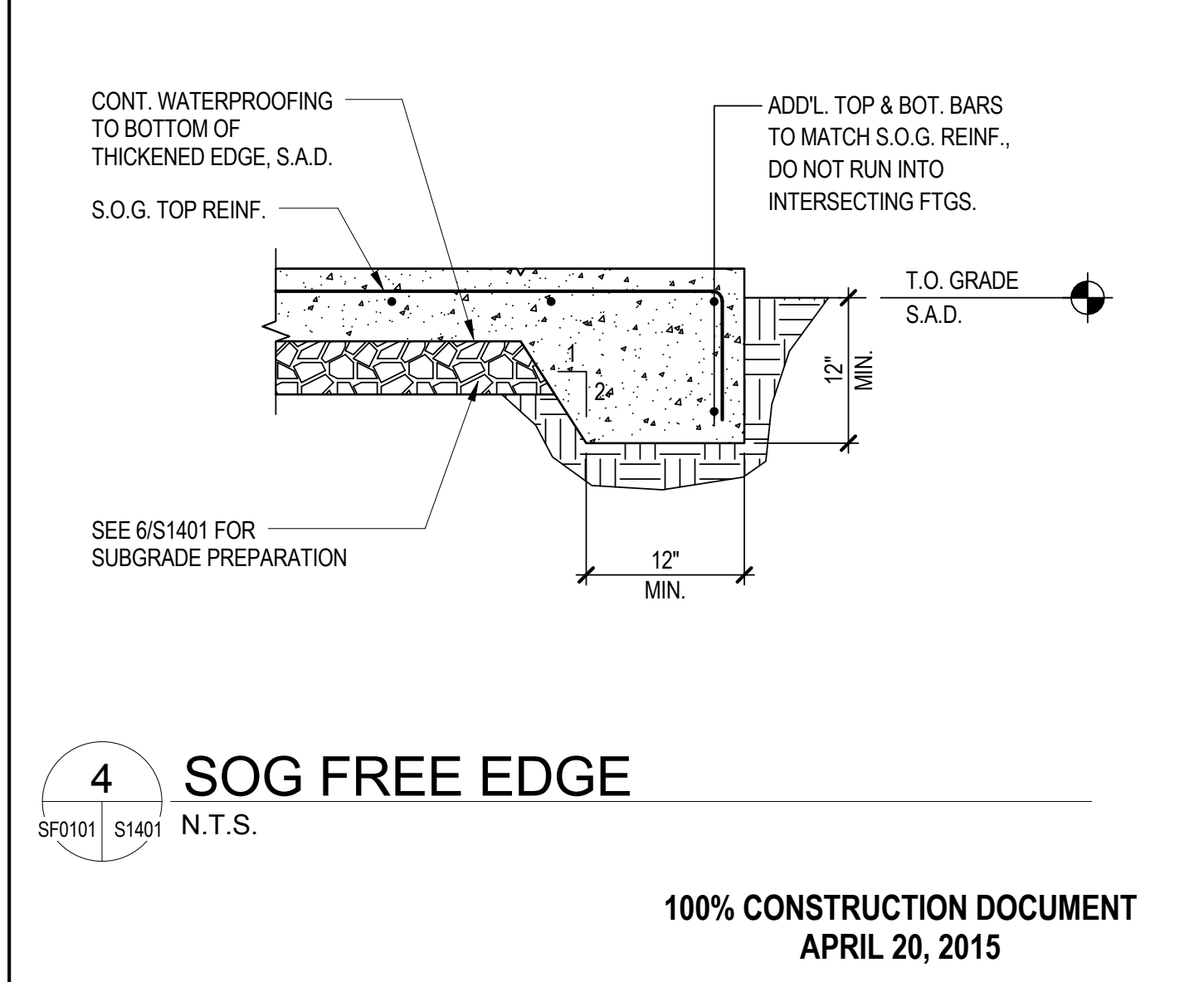
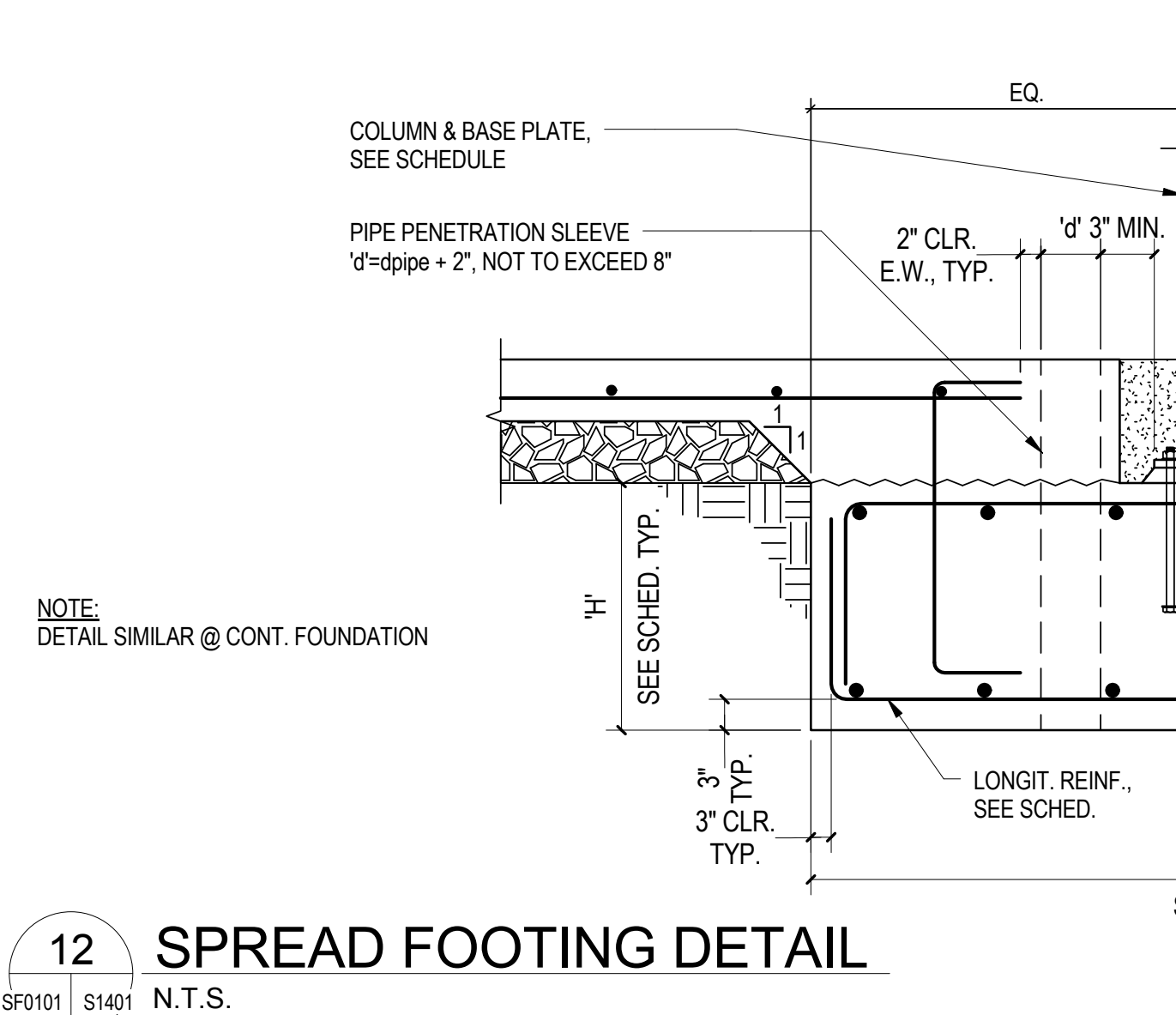
SECTION A-A

20

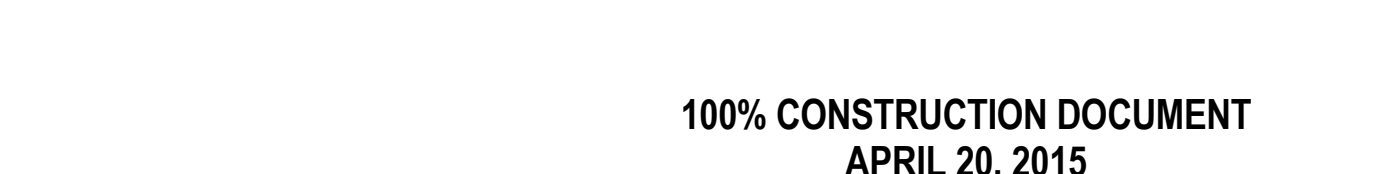
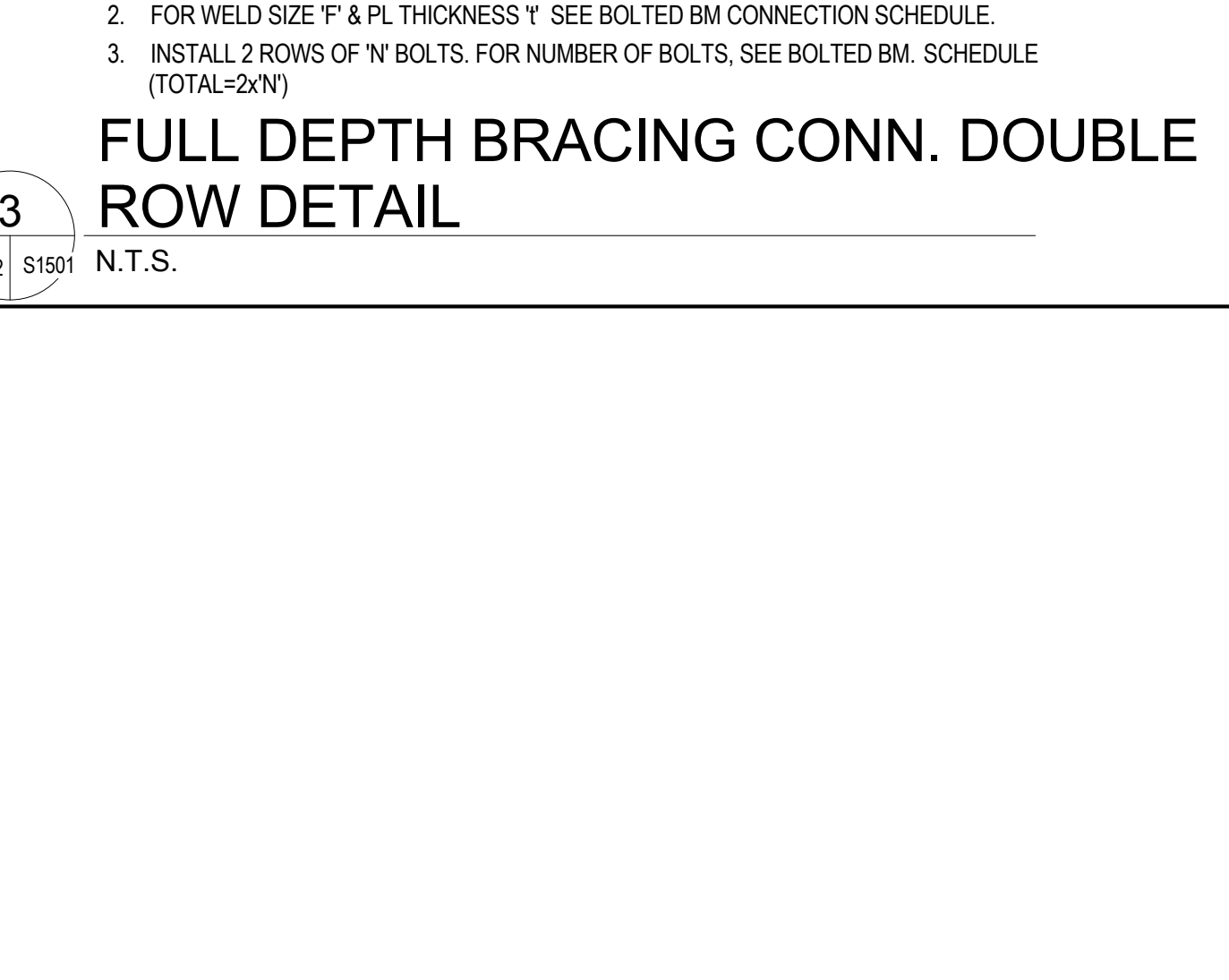
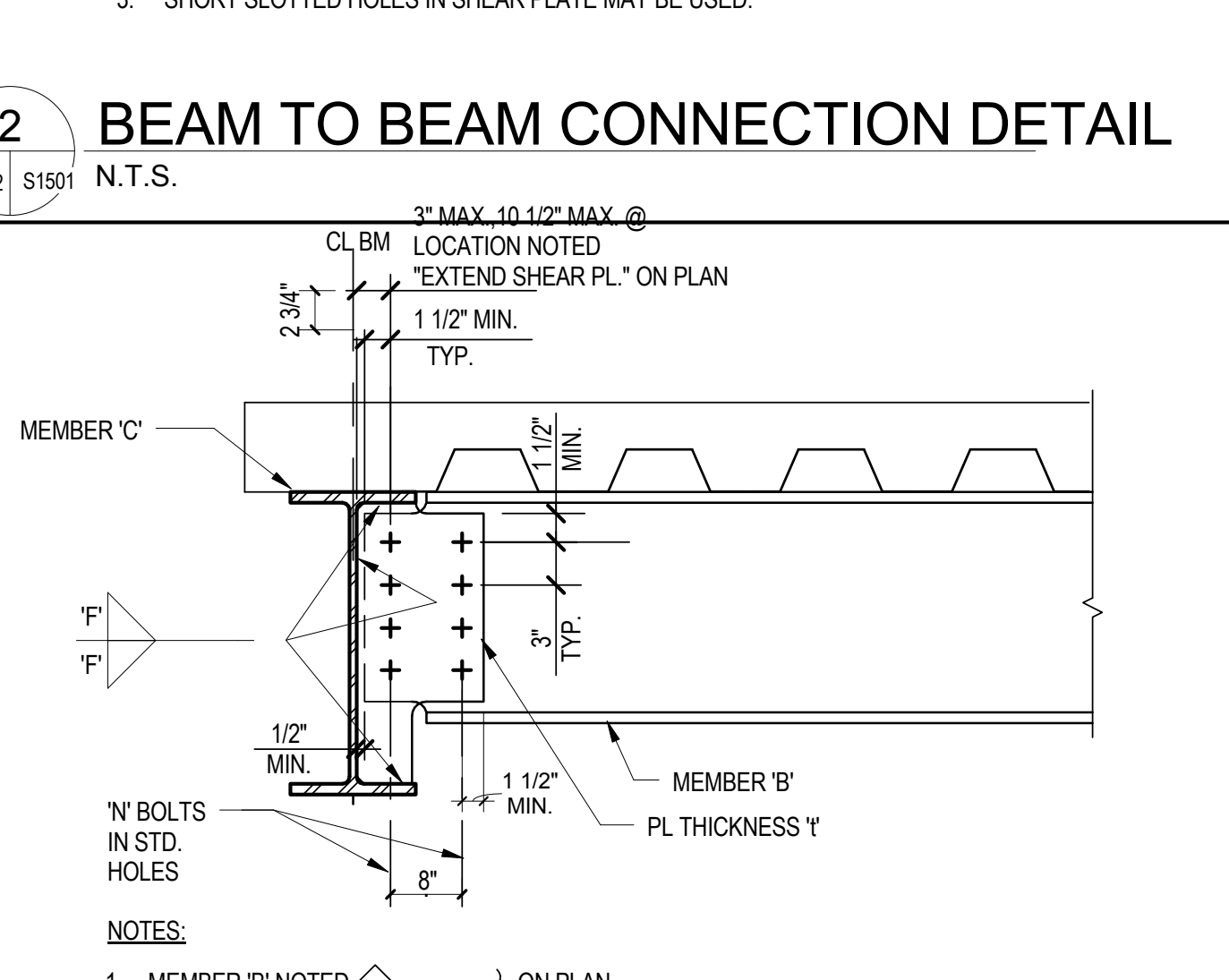
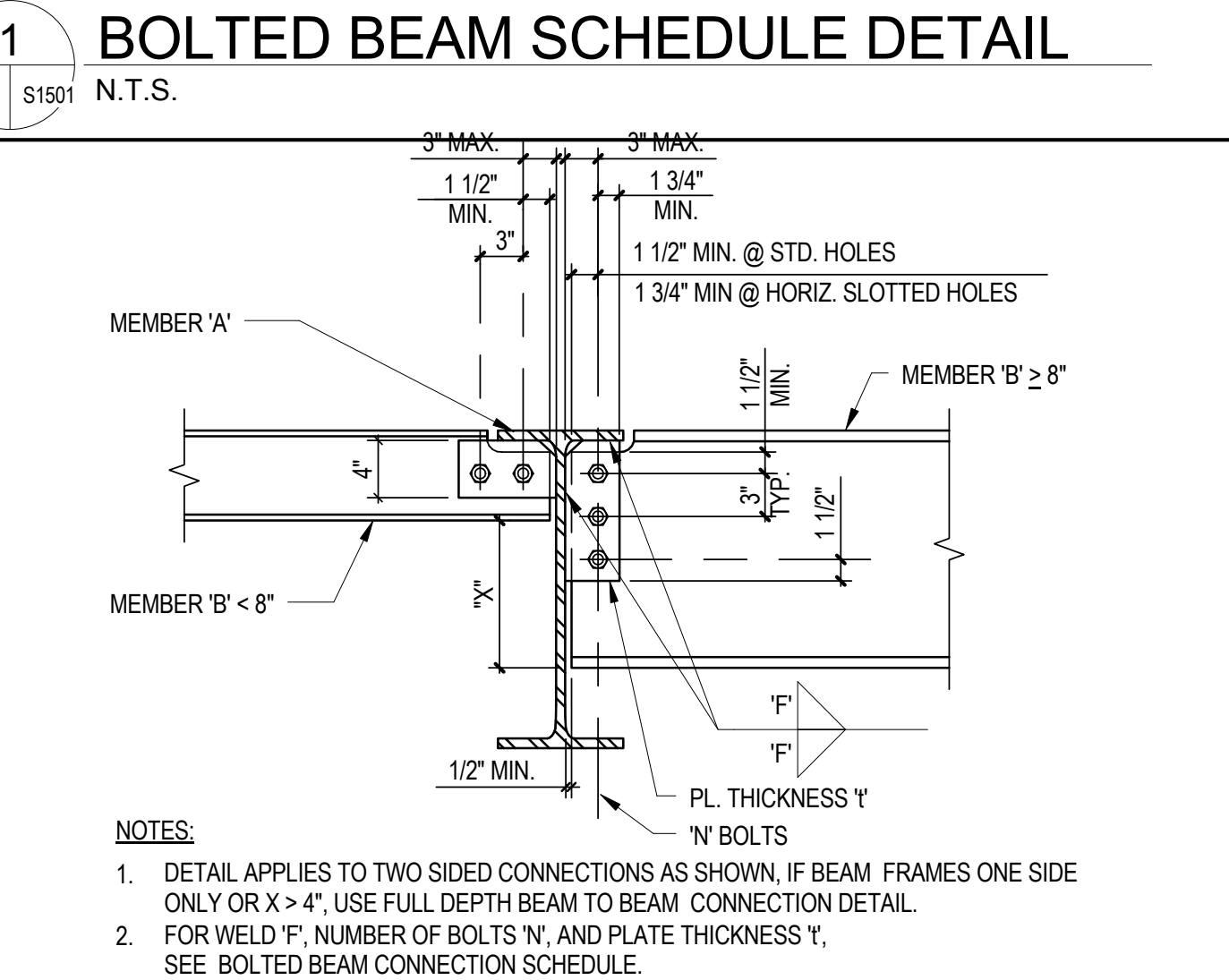
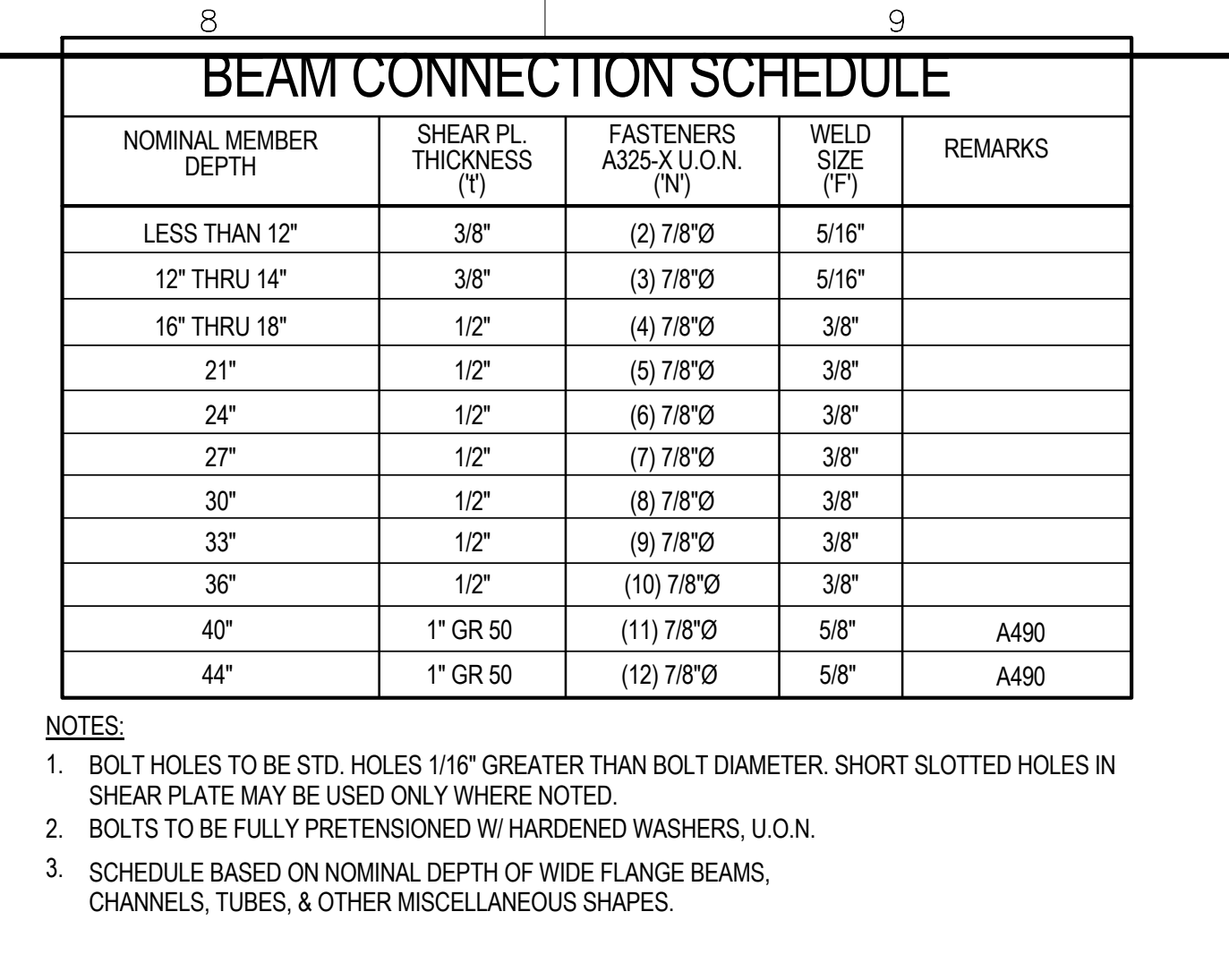
FOOTING SCHEDULE


SF0101 S1401

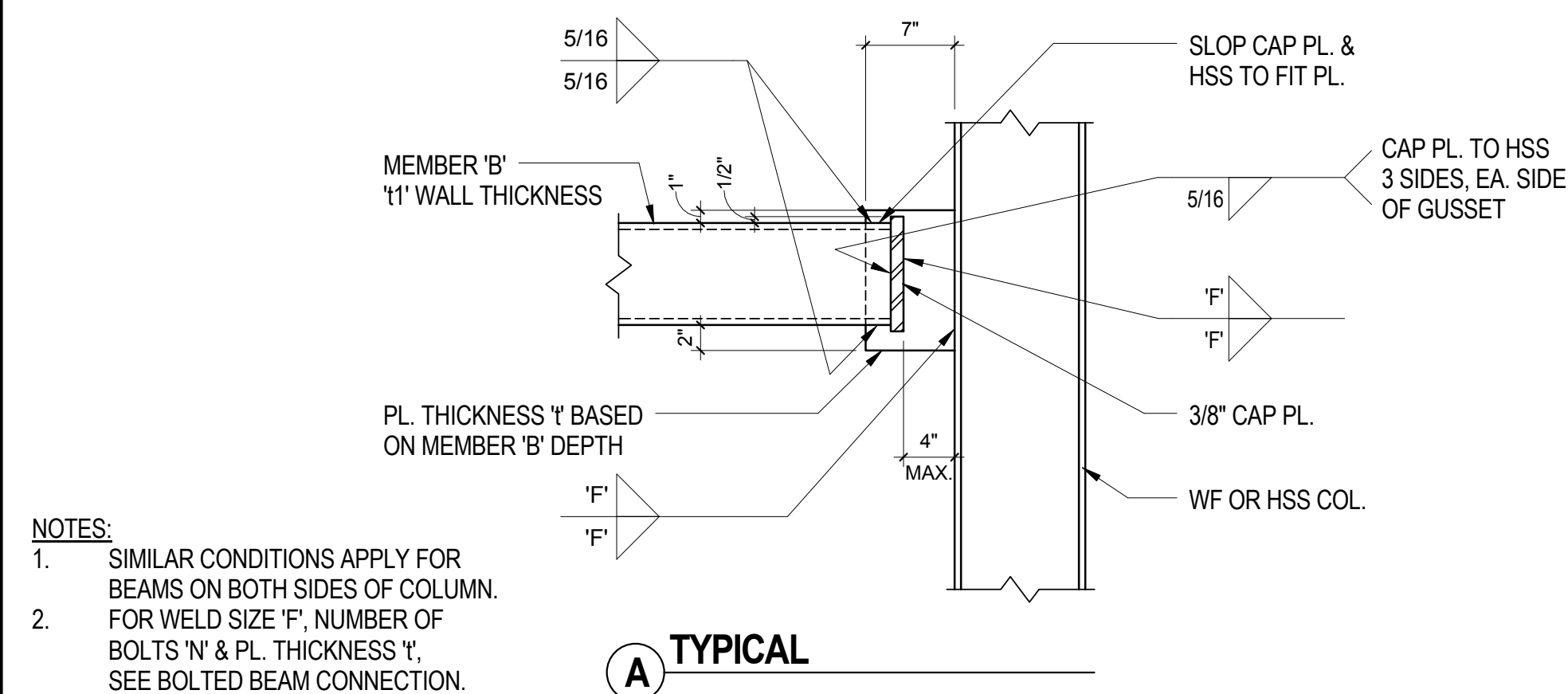
N.T.S.





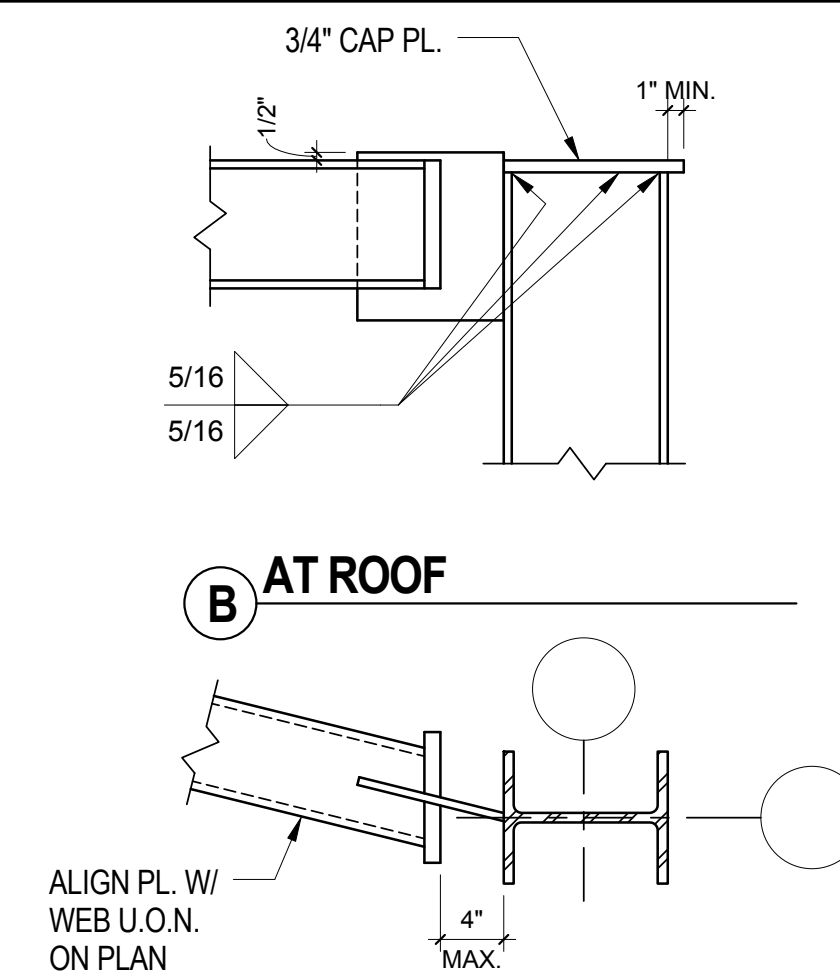


Project Title VA MARTINEZ TBI		Project Number 612-125	Office of Construction and Facilities Management
		Building Number	
Location 150 MUIR ROAD, MARTINEZ, CA 94553		Drawing Number S1501	 Department of Veterans Affairs
Date 20 MARCH 2015	Checked RG Drawn JT		



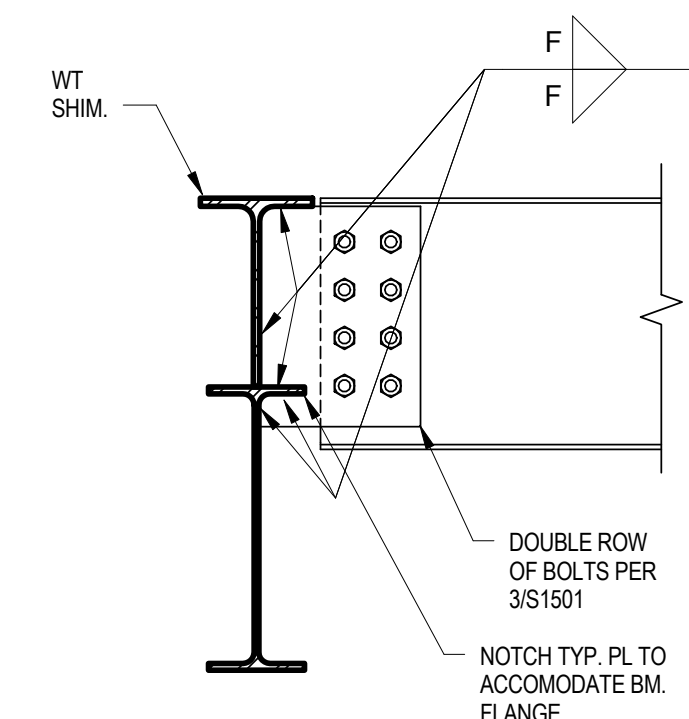
HSS TO STRONG WAY WF OR HSS
COLUMN

9 COL
1" = 1'-0"




EXPOSED HSS BEAM TO
HSS COLUMN CONNECTION

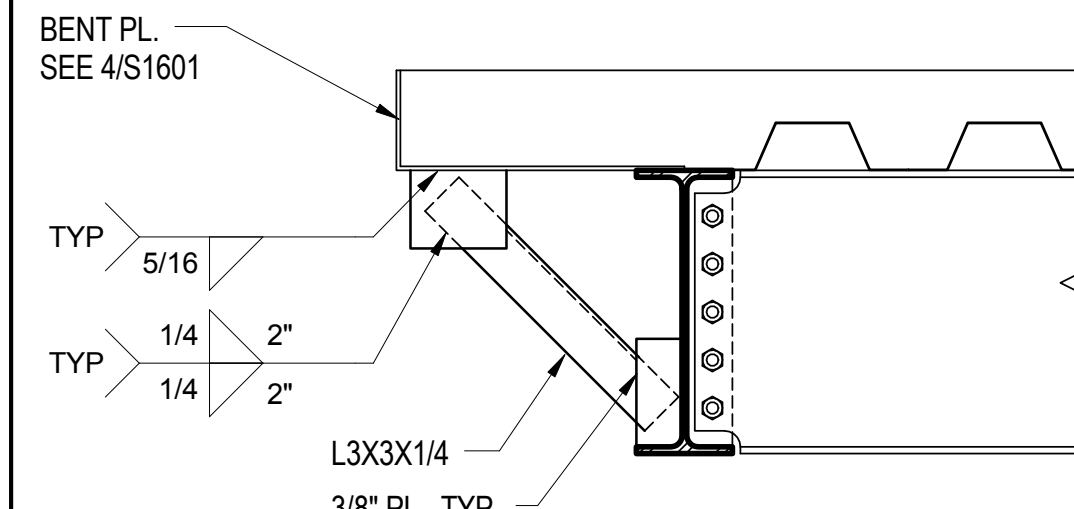
1 HSS
 SE0102 S1502
 1" = 1'-0"



TYP. BEAM TO LOWERED GIRDER

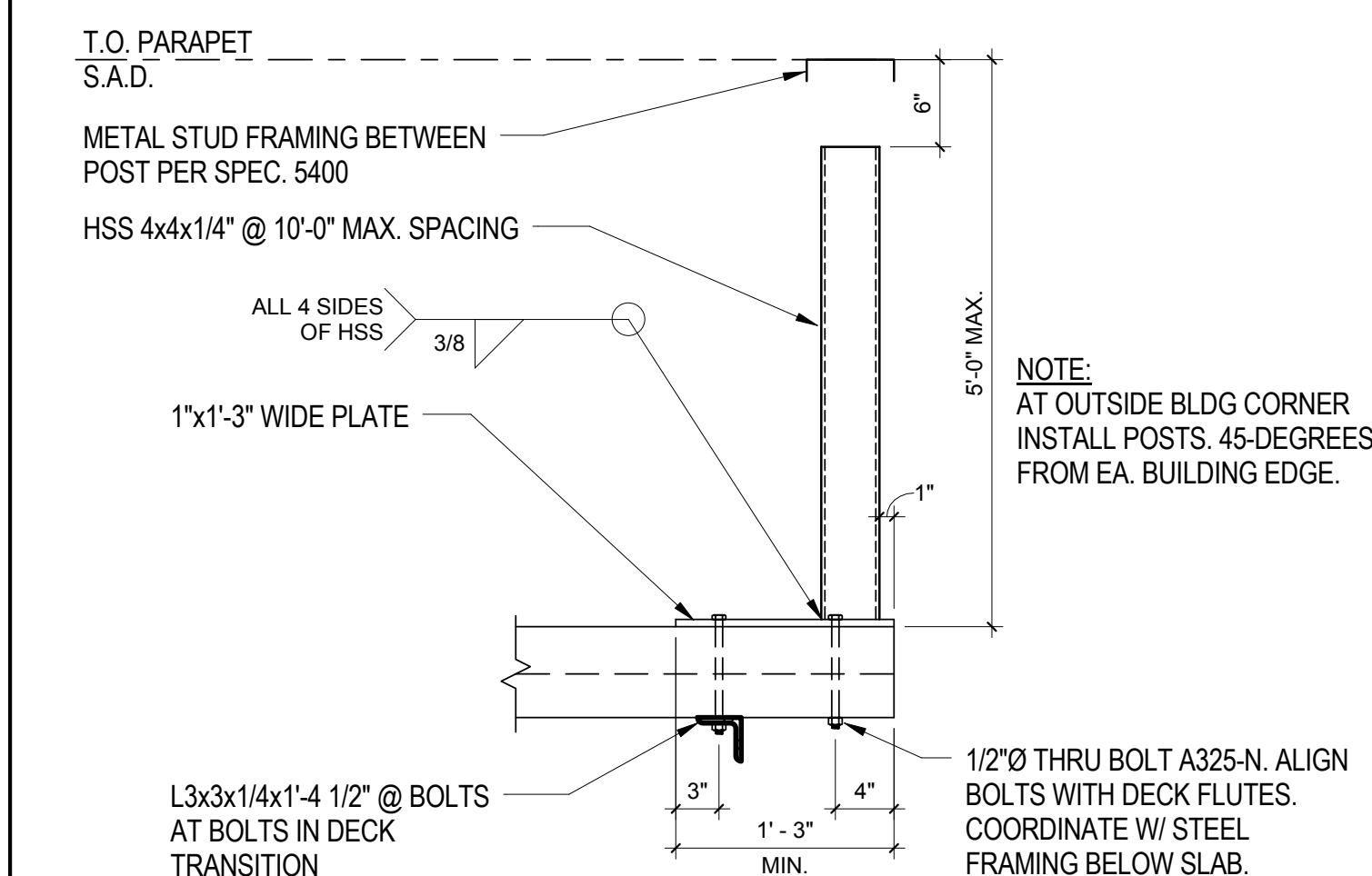


6 TYP.
1" = 1'-0"



DECK SUPPORT

2 DEC
1" = 1'-0"

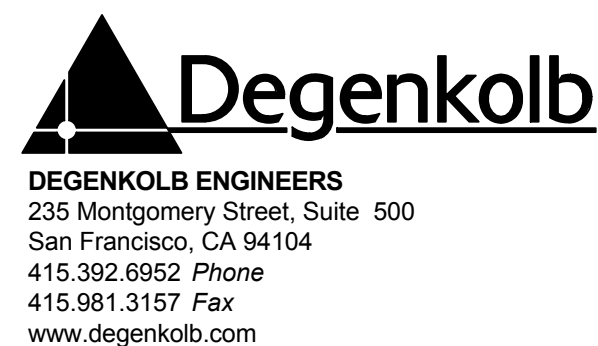


FREE STANDING PARAPET SUPPORT

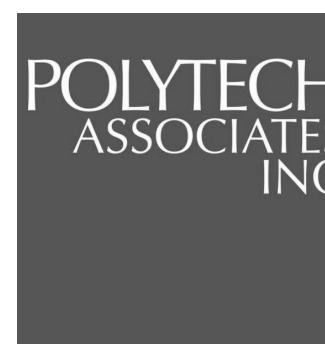
3
SF0102 S1502
1" = 1'-0"

[illegible]

CONSULTANTS:



ARCHITECT



POLYTECH ASSOCIATES INC.
235 Pine Street, 17th Floor
San Francisco, CA 94104
TEL (415) 397-3117
FAX (415) 397-1517

Drawing Title	STEEL DETAILS
---------------	---------------

Approved: Project Director

Project Title	VA MARTINEZ TB
---------------	----------------

	Location

Date
20 MARCH 2015

Checked
RG

Draw	JT
------	----

Project Number	612-125
----------------	---------

Building Number

Drawing Number

S1502

100% CONSTRUCTION DOCUMENT
APRIL 20, 2015

Office of
Construction
and Facilities
Management





