

NOTES:

THIS DRAWING IN NO WAY REPRESENTS A BOUNDARY SURVEY BY STORHAUG ENGINEERING. COORDINATE WITH OTHERS REGARDING PROPERTY BOUNDARIES.

DISCLAIMER

THE SURVEYOR HAS MADE NO INVESTIGATION OR INDEPENDENT SEARCH FOR EASEMENTS OF RECORD, ENCUMBRANCES, RESTRICTIVE COVENANTS, OR ANY OTHER FACTS THAT AN ACCURATE AND CURRENT TITLE SEARCH MAY DISCLOSE.

SITE UTILITIES:

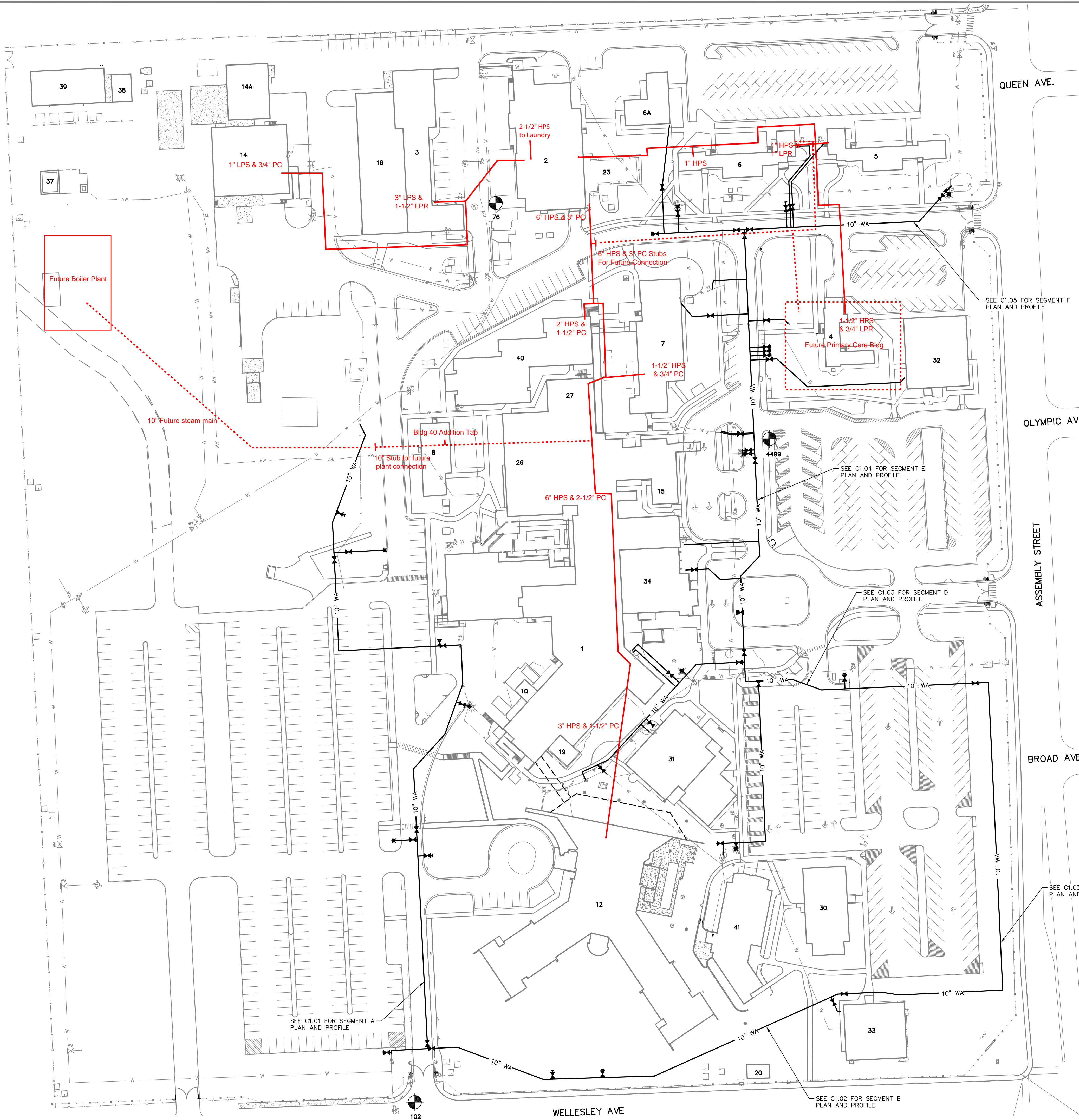
THE MAPPED INFORMATION SHOWN HEREIN IS A PRODUCT OF STORHAUG ENGINEERING, INC., AN OUTSIDE UTILITY LOCATING SUBCONTRACTOR AND VA MEDICAL CENTER UTILITY LOCATIONS. THIS MAP IS PREPARED FOR PRESENTATION AND INFORMATIONAL PURPOSES ONLY. STORHAUG ENGINEERING HAS MADE AN EFFORT TO CORRECTLY MAP THE SITE UTILITIES AND THEIR LOCATIONS BY FIELD SURVEY OF SURFACE FEATURES AND PAINT MARKINGS. STORHAUG ENGINEERING, INC. DOES NOT WARRANT, GUARANTEE, OR ACCEPT ANY LIABILITY FOR ACCURACY, PRECISION, OR COMPLETENESS OF ANY UTILITY INFORMATION SHOWN HEREON OR FOR ANY INFERENCES MADE THEREFROM. ANY USE MADE OF THIS INFORMATION IS SOLELY AT THE RISK OF THE USER. STORHAUG ENGINEERING, INC. MAKES NO WARRANTY, EXPRESSED OR IMPLIED, AND ANY ORAL OR WRITTEN STATEMENT BY ANY EMPLOYEE OF STORHAUG ENGINEERING, INC. OR AGENTS THEREOF TO THE CONTRARY IS NULL AND VOID.

ELEVATION DATUM

NAVD83 DATUM ESTABLISHED FROM WSDOT MONUMENT 2546. DESIGNATION GP32291-71. ELEVATION OF 1991.75. LOCATED ON FRANCIS AVE. 2.5 MILES WESTERLY OF SR 395 (DIVISION STREET)

STORHAUG SITE CONTROL TABLE

Point #	Elevation	Northing	Easting	Description
102	1886.69	273666.83	2466196.55	CP MAG NAIL
76	1900.79	274747.88	2466293.84	CP MAG
4499	1905.33	274464.21	2466623.00	CP MAG NAIL



LEGEND

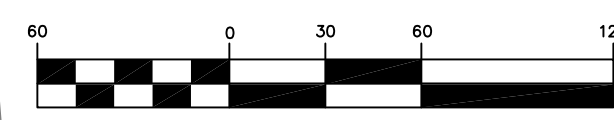
EXISTING FEATURES

- ASPHALT SURFACING
- 6" CURB
- CURB AND GUTTER
- ROLLED CURB
- SIDEWALK/CONCRETE
- GRAVEL
- FOUND POINT AS NOTED
- DRYWELL
- CATCH BASIN
- STORM DRAIN MANHOLE
- GUY WIRE POLE
- POWER POLE
- LIGHT POLE
- UTILITY MANHOLE
- ELECTRICAL ENCLOSURE
- TELEPHONE ENCLOSURE
- TELEPHONE RISER
- COMMUNICATIONS MANHOLE
- WATER VALVE
- POST INDICATOR VALVE
- FIRE HYDRANT
- FDC (FIRE DEPARTMENT CONNECTION)
- ICV (IRRIGATION CONTROL VALVE)
- WATER VALUT
- WATER MANHOLE
- SANITARY SEWER MANHOLE
- CLEANOUT
- GAS METER
- SIGN
- TREE (DECIDUOUS OR CONIFEROUS)
- WATER LINE
- STEAM LINE
- SANITARY SEWER LINE
- STORM DRAIN LINE / CULVERT
- POWER LINE (OHP OR BP)
- COMMUNICATIONS LINE (OHT, BFO OR BT)
- GAS LINE
- ABANDONED LINE (AS SPECIFIED)
- CONTOURS
- FENCE

PROPOSED IMPROVEMENTS

- ASPHALT SURFACING
- 6" CURB
- CURB AND GUTTER
- ROLLED CURB
- SIDEWALK/CONCRETE
- FIRE HYDRANT
- WATER VALVE
- WATER LINE (AS SIZED)
- SAWCUT

GRAPHIC SCALE



(IN FEET)
1 inch = 60 ft.



CALL BEFORE YOU DIG 811

