

AIR UNIT DEFINITION AND LOCATION

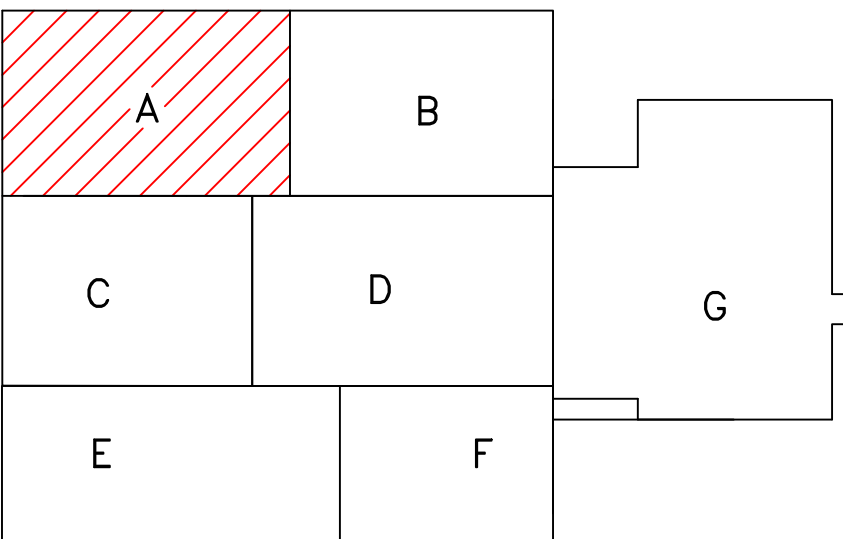
SUB-AREA	AHU #	UNIT #	DEVICE	SIZE	GPM	MIN CFM	MAX CFM	MIN ach	PRESSURE	LOCATION	I.D. MARK	PRODUCT NUMBER
A-1	1	01	VAV	4"		88	179	6	NR	Corridor	A-1-01-VAV	
A-1	1	02	RH	8"	0.9			4	NR	1012,1013	A-1-02-RH	VG7842CT+7150G
A-1	1	03	RH	8"	1.0	75	150	2	NR	Corridor	A-1-03-RH	VG7842CT+7150G
A-1	1	04	RH	8"	0.8	57.5	115	4	NR	1016	A-1-04-RH	VG7842CT+7150G
A-1	1	05	RH	8"	0.9	64.5	129	4	NR	1017	A-1-05-RH	VG7842CT+7150G
A-1	1	06	VAV	4"		56	113	2	NR	Corridor	A-1-06-VAV	
A-1	1	07	VAV	4"		107	188	6	NR	1018	A-1-07-VAV	
A-1	1	08	VAV	4"		70	93	6	Neg	1010	A-1-08-VAV	
A-1	1	09	VAV	4"		75	150	2	NR	Corridor	A-1-09-VAV	
A-1	1	10	VAV	6"		150	350	6	NR	1007,1009,1011	A-1-10-VAV	
A-1	1	11	VAV	4"		50	93	4	Pos	SPD Supply	A-1-11-VAV	
A-1	1	12	RH	8"	0.8	60	120	4	Pos	1022	A-1-12-RH	VG7842CT+7150G
A-1	1	13	VAV	4"		75	150	2	NR	Corridor	A-1-13-VAV	
A-1	1	14	VAV	6"		90	200	4,15	Positive	1020, 1023	A-1-14-VAV	
A-1	1	15	VAV	6"		267	492	6	NR	1034,1035,1036	A-1-15-VAV	
A-1	1	16	VAV	6"		138	268	6,2	NR	1033, 1031	A-1-16-VAV	
A-1	1	17	VAV	4"		150	161	6	NR	1025	A-1-17-VAV	
A-1	1	18	VAV	4"		53	105	4	NR	1003, 1024	A-1-18-VAV	
A-1	1	19	VAV	6"		175	396	4,6,2	NR	1002,1004,1006	A-1-19-VAV	
A-1	1	20	VAV	4"		50	266	12	Neg	1025	A-1-20-VAV	
A-1	3	21	RH	8"	5.1			4	Neg	Waiting Area	A-1-21-RH	VG7842GT+7150G
A-1-AHU-1 CFM TOTAL:					3718	= 3718						

SUB-AREA	AHU #	UNIT #	DEVICE	SIZE	GPM	MIN CFM	MAX CFM	MIN ach	PRESSURE	LOCATION	I.D. MARK	PRODUCT NUMBER
A-2	1	01	RH	8"	0.9	64.5	129	4	NR	1037	A-2-01-RH	VG7842CT+7150G
A-2	1	02	RH	8"	0.9	57.5	115	4	NR	1038	A-2-02-RH	VG7842CT+7150G
A-2	1	03	RH	8"	0.9	63.5	127	4	NR	1039	A-2-03-RH	VG7842CT+7150G
A-2	1	04	VAV	4"		57	113	2	NR	Corridor	A-2-04-VAV	
A-2	1	05	VAV	4"		53	105	4	NR	1040	A-2-05-VAV	
A-2	1	06	VAV	4"		60	120	4	NR	1060	A-2-06-VAV	
A-2	1	07	VAV	4"		89	164	6	NR	1061	A-2-07-VAV	
A-2	1	08	VAV	4"		56	113	2	NR	Corridor	A-2-08-VAV	
A-2	1	09	VAV	4"		75	150	2	NR	Corridor	A-2-09-VAV	
A-2	1	10	RH	8"	1.5	246	300	15	Pos	1043	A-2-10-RH	VG7842CT+7150G
A-2	1	11	VAV	4"		50	93	2	NR	Corridor	A-2-11-VAV	
A-2	1	12	VAV	4"		50	135	4	NR	1056	A-2-12-VAV	
A-2	1	13	VAV	4"		75	150	2	NR	Corridor	A-2-13-VAV	
A-2	1	14	VAV	6"		267	492	6	NR	1041,1042,1044	A-2-14-VAV	
A-2	1	15	VAV	6"		187	373	6,4,2	NR	1052,1053,1054	A-2-15-VAV	
A-2	1	16	VAV	6"		120	268	6,2	NR	1046,1048	A-2-16-VAV	
A-2	1	17	VAV	4"		160	300	15	Pos	1045	A-2-17-VAV	
A-2	1	18	VAV	6"		150	300	15	Pos	1045	A-2-18-VAV	
A-2	1	19	VAV	4"		50	118	4	NR	1030	A-2-19-VAV	
A-2	3	20	VAV	10"		347	660	4	Neg	Waiting Area	A-2-20-VAV	
A-2	3	21	VAV	4"		75	150	2	NR	Corridor	A-2-21-VAV	
A-2	3	22	VAV	4"		75	150	2	NR	Corridor	A-2-22-VAV	
A-2	3	23	VAV	4"		75	150	2	NR	Corridor	A-2-23-VAV	
A-2-AHU-1 CFM TOTAL:					3265	= 4375						
A-2-AHU-3 CFM TOTAL:					1110							

SUB-AREA	AHU #	UNIT #	DEVICE	SIZE	GPM	MIN CFM	MAX CFM	MIN ach	PRESSURE	LOCATION	I.D. MARK	PRODUCT NUMBER
A-3	1	01	VAV	4"		57	113	2	NR	Corridor	A-3-01-VAV	
A-3	1	02	RH	8"	0.8	60	120	4	NR	1062	A-3-02-RH	VG7842CT+7150G
A-3	1	03	RH	8"	1.1	93	175	6	NR	1063	A-3-03-RH	VG7842CT+7150G
A-3	1	04	RH	8"	1.2	113	195	6	NR	1064	A-3-04-RH	VG7842CT+7150G
A-3	1	05	RH	8"	1.3	132	238	6	Pos	1084	A-3-05-RH	VG7842CT+7150G
A-3	1	06	VAV	4"		57	113	2	NR	1039A,Corridor	A-3-06-VAV	
A-3	1	07	VAV	4"		80	243	6	NR	1055A	A-3-07-VAV	
A-3	1	08	VAV	4"		57	113	2	NR	Corridor	A-3-08-VAV	
A-3	1	09	RH	8"	2.4	487	574	6,2	NR	1055,55C,55B	A-3-09-RH	VG7842ET+7150G
A-3	1	10	VAV	6"		240	360	6	NR	1070,1072,1074	A-3-10-RH	
A-3	1	11	VAV	6"		325	360	6,4,6	NR	1066,1067,1068	A-3-11-VAV	
A-3	1	12	VAV	6"		120	250	15	Pos	1069	A-3-12-VAV	
A-3	1	13	VAV	4"		75	150	2	NR	Corridor	A-3-13-VAV	
A-3	1	14	VAV	6"		180	330	6	NR	1071,1073,1075	A-3-14-VAV	
A-3	3	15	VAV	4"		90	220	4	NEG	Waiting Area	A-3-15-VAV	
A-3	3	16	VAV	4"		110	220	4	NEG	Waiting Area	A-3-16-VAV	
A-3	3	17	VAV	4"		75	150	2	NR	Corridor	A-3-17-VAV	
A-3	3	18	VAV	4"		75	150	2	NR	Corridor	A-3-18-VAV	
A-3-AHU-1 CFM TOTAL:					3584	= 4324						
A-3-AHU-3 CFM TOTAL:					740							

AHU-1 CFM TOTAL: 10,567  
AHU-3 CFM TOTAL: 1,850  
MAX CFM TOTAL = 12,417

- Notes:
1. Thermostat is the common name of the space sensor.
  2. Re-Heat boxes only have a re-heat valve.
  3. Re-Heat boxes numbers from original plans.
  4. Pressure Relationships noted are dependant upon existing return ducting.
  5. Asterisks noted on table indicate that all re-heats in this area were left "as-is"
  6. A-1-01 moved grill and temp. thermostat into corridor.
  7. A-1-02 added grill into room 1012.
  8. Office created in room 1000.
  9. Office number correction for 1055B and 1055D.
  10. A-3-06 moved thermostat and grill in office 1039A.
  11. A-3-08 capped off grill in corridor. Added grill and moved thermostat into room 1055C.
  12. Created (3) offices 1029A, 1029B, and Storage.
  13. Any instance of a doubled up thermostat has been removed. All VAV and RH boxes have independent thermostats.



Property of TL Services  
Do Not Replicate or Copy

AS-BUILT DRAWINGS  
FIRST FLOOR AREA ~ A  
SUPPLY/RETURN MECHANICAL DRAWING LAYOUT

Drawn	By	Approved	Date
KAS	09NOV12		
Released by:			
Contract Number: 11-DC012			
Office Information: TL Services, Inc. 4733 Kibler Rd. Van Buren, AR 72956 PH: 501-474-7222 FAX: 501-471-7364			
Drawing Number: 1 of 7			

**TL SERVICES**  
INCORPORATED  
A SERVICE DISABLED VETERAN OWNED SMALL BUSINESS  
TL SERVICES, INC  
ENGINEERING GROUP

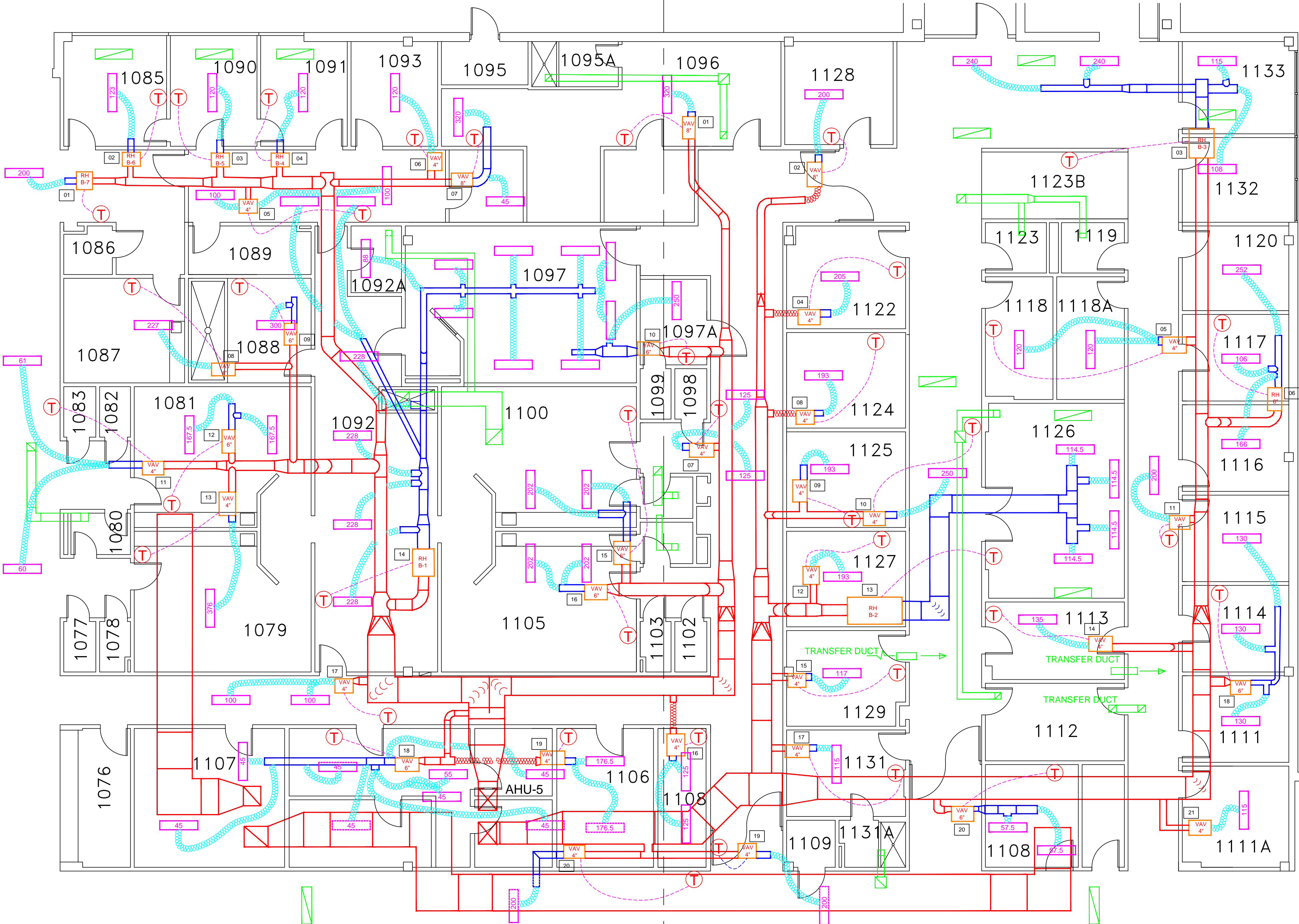
Project Title	REPLACE ROOF DAMPERS AND CONTROLS
Location	ORLANDO VA MEDICAL CENTER
Date	11/09/12
Checked	
Drawn	KAS
Project Number	675-11-209
Building Number	500
Drawing Number	M-VM-1
VA248-C-1793	

Office of  
Facilities  
Management  
Department of  
Veterans Affairs



SUB AREA B-1

SUB AREA B-2



AIR UNIT DEFINITION AND LOCATION

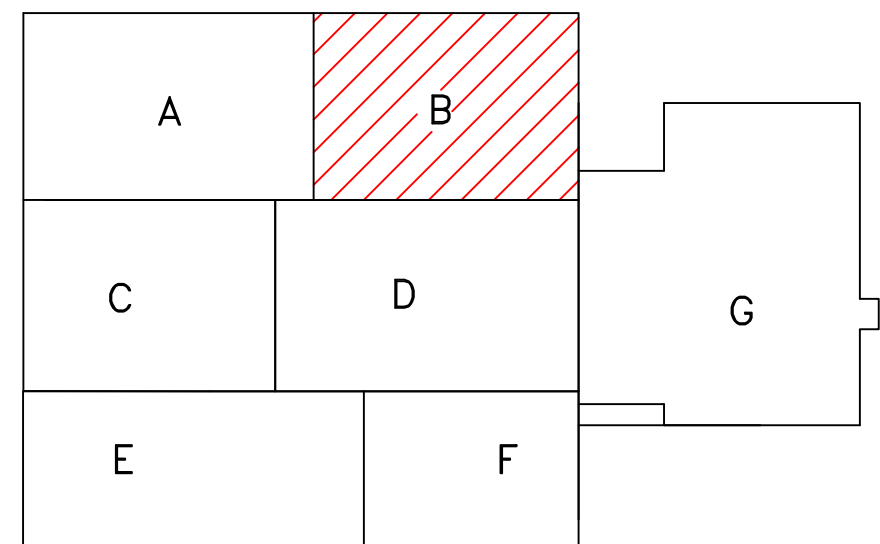
SUB-AREA	AHU #	UNIT #	DEVICE	SIZE	GPM	MIN CFM	MAX CFM	MIN ach	PRESSURE	LOCATION	I.D. MARK	PRODUCT NUMBER
B-1	5	01	RH	8"	1.1	100	200	2	NR	Corridor	B-1-01-RH	VG7842ET+7150G
B-1	5	02	RH	9"	0.8	62	123	3	NR	1085	B-1-02-RH	VG7842CT+7150G
B-1	5	03	RH	9"	0.7	55	120	3	NR	1090	B-1-03-RH	VG7842CT+7150G
B-1	5	04	RH	8"	0.7	55	120	3	NR	1091	B-1-04-RH	VG7842CT+7150G
B-1	5	05	VAV	4"		100	200	2	NR	Corridor	B-1-05-VAV	
B-1	5	06	VAV	4"		53	120	3	NR	1093	B-1-06-VAV	
B-1	5	07	VAV	4"		45	365	6	NR	1096	B-1-07-VAV	
B-1	5	08	VAV	4"		124	227	10	Pos	1087	B-1-08-VAV	
B-1	5	09	VAV	6"		150	300	15	NR	1088	B-1-09-VAV	
B-1	5	10	VAV	6"		70	250	6	Pos	1097A	B-1-10-VAV	
B-1	5	11	VAV	4"		61	121	2	NR	Corridor	B-1-11-VAV	
B-1	5	12	VAV	6"		218	375	6	Pos	1081	B-1-12-VAV	
B-1	5	13	VAV	4"		219	376	6	Pos	1079	B-1-13-VAV	
B-1	5	14	RH	16"	3.8			10	NEG	1092, 1092A	B-1-14-RH	VG7842ET+7150G
B-1	5	15	VAV	6"		240	404	6	Pos	1100	B-1-15-VAV	
B-1	5	16	VAV	6"		240	404	6	Pos	1105	B-1-16-VAV	
B-1	5	17	VAV	4"		100	200	2	NR	Corridor	B-1-17-VAV	
B-1	5	18	VAV	6"		183	325	3	NR	1107	B-1-18-VAV	
B-1	5	19	VAV	4"		120	353	3	NR	1106	B-1-19-VAV	
B-1	5	20	VAV	4"		100	200	2	NR	Corridor	B-1-20-VAV	

B-1-AHU-5 CFM TOTAL: = 4783

SUB-AREA	AHU #	UNIT #	DEVICE	SIZE	GPM	MIN CFM	MAX CFM	MIN ach	PRESSURE	LOCATION	I.D. MARK	PRODUCT NUMBER
B-2	5	01	VAV	8"		265	320	6	Pos	1096	B-2-01-VAV	
B-2	5	02	VAV	8"		75	200	4	Pos	1128	B-2-02-VAV	
B-2	5	03	RH	16"	2.2	240	479	3.3,2	NR	1132,1133,Corridor	B-2-03-RH	VG7842ET+7150G
B-2	5	04	VAV	4"		102	205	6	NR	1122	B-2-04-VAV	
B-2	5	05	VAV	4"		120	240	12	NEG	1118,118A	B-2-05-VAV	
B-2	5	06	RH	4"		313	539	6.3,12	NR,NR,Neg	1167,1117,1120	B-2-06-VAV	VG7842CT+7150G
B-2	5	07	VAV	4"		125	250	2	NR	Corridor	B-2-07-VAV	
B-2	5	08	VAV	4"		80	193	6	NR	1124	B-2-08-VAV	
B-2	5	09	VAV	4"		50	193	6	NR	1125	B-2-09-VAV	
B-2	5	10	VAV	4"		125	250	2	NR	Corridor	B-2-10-VAV	
B-2	5	11	VAV	4"		100	200	2	NR	Corridor	B-2-11-VAV	
B-2	5	12	VAV	4"		80	193	6	NR	1127	B-2-12-VAV	
B-2	5	13	RH	16"	2.2	259	458	6	NR	1126	B-2-13-RH	VG7842ET+7150G
B-2	5	14	VAV	4"		53	135	3	NR	1113	B-2-14-VAV	
B-2	5	15	VAV	4"		55	193	3	NR	1129	B-2-15-VAV	
B-2	5	16	VAV	4"		55	250	3	NR	1108	B-2-16-VAV	
B-2	5	17	VAV	4"		58	115	3	NR	1131	B-2-17-VAV	
B-2	5	18	VAV	6"		270	390	6	NR	1111	B-2-18-VAV	
B-2	5	19	VAV	4"		100	200	2	NR	Corridor	B-2-19-VAV	
B-2	5	20	VAV	6"		58	115	2	NR	1108	B-2-20-VAV	
B-2	5	21	VAV	6"		58	115	2	NR	111A	B-2-21-VAV	

B-2-AHU-5 CFM TOTAL: = 5157

MAX CFM TOTAL = 9,940



Notes:

1. Thermostat is the common name of the space sensor.
2. Re-Heat boxes only have a re-heat valve.
3. Re-Heat boxes numbers from original plans.
4. Pressure Relationships noted are dependant upon existing return ducting.
5. Asterisks noted on table indicate that all re-heats in this area were left "as-is".
6. B-1-05 moved to room 1089.
7. B-1-09 removed one grill.
8. Offices created in corridor outside room 1093.
9. B-1-10 moved thermostat to room 1097A.
10. B-1-11 added a grill, dividing the airflow.
11. Room 1121A corrected to 1123B.
12. Room 1096 floor plan changed. Now secure IT Computer room.
13. B-1-12 added room number 1081.
14. Rooms 1106 and 1107 layout altered by VA and shown with new grill placement.
15. Storage room 1108 split into two rooms, main room being the only conditioned.
16. Room 1118 split in two, creating room 1118A, adding a grill and splitting the airflow.
17. B-1-17 added a grill, dividing the airflow.
18. B-1-19 removed a grill.
19. B-2-06 VAV turned into re-heat box.
20. B-2-07 added a grill, dividing the airflow.
21. B-2-16 removed a grill.
22. B-2-21 added VAV in room 111A.

Property of TL Services  
Do Not Replicate or Copy

AS-BUILT DRAWINGS  
FIRST FLOOR AREA ~ B  
SUPPLY/RETURN MECHANICAL DRAWING LAYOUT

Drawn By: KAS	Date: 09NOV12	Approved By: KAS	Date: 09NOV12
Reviewed by:			
Contract Number: 11-DC012	Office Information: TL Services, Inc. 4733 Kibler Rd. Van Buren, AR 72956 PH: 501-474-7222 FAX: 501-471-7964		
Drawing Number: 2 of 7			

**TL SERVICES**  
INCORPORATED  
A SERVICE DISABLED VETERAN OWNED SMALL BUSINESS  
TL SERVICES, INC  
ENGINEERING GROUP

Project Title: REPLACE ROOF DAMPERS AND CONTROLS	Project Number: 675-11-209	Office of Facilities Management
Location: ORLANDO VA MEDICAL CENTER	Building Number: 500	
Date: 11/09/12	Drawing Number: M-VM-2	Department of Veterans Affairs
Checked: KAS	VA248-C-1793	



