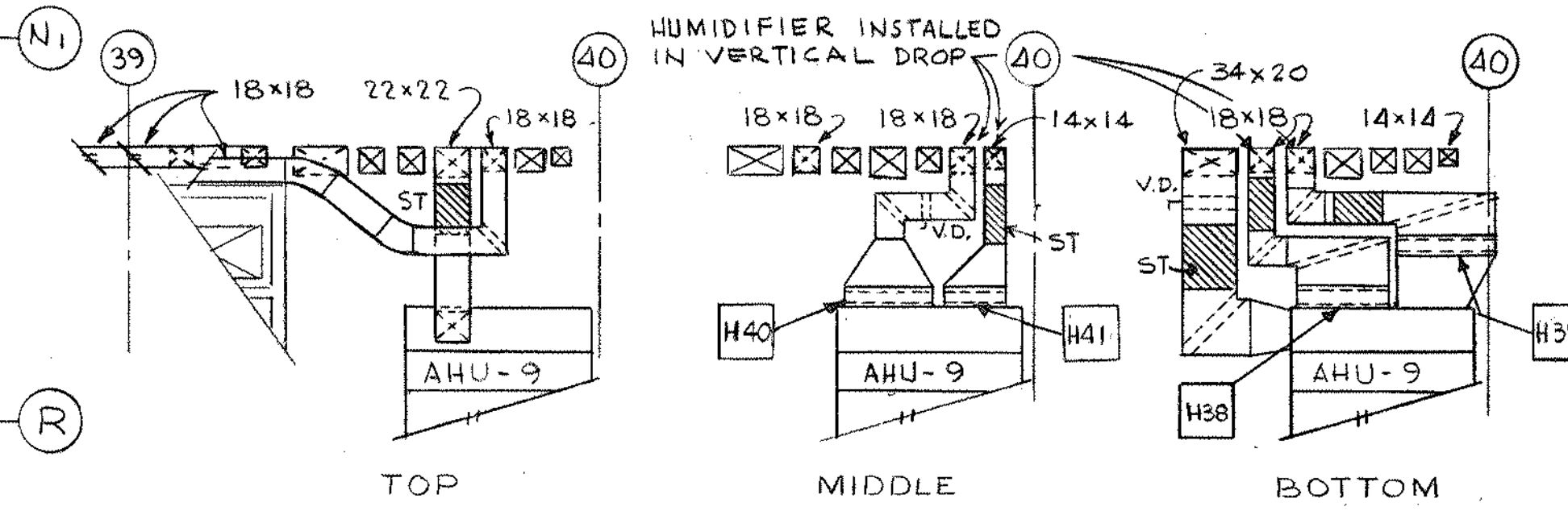


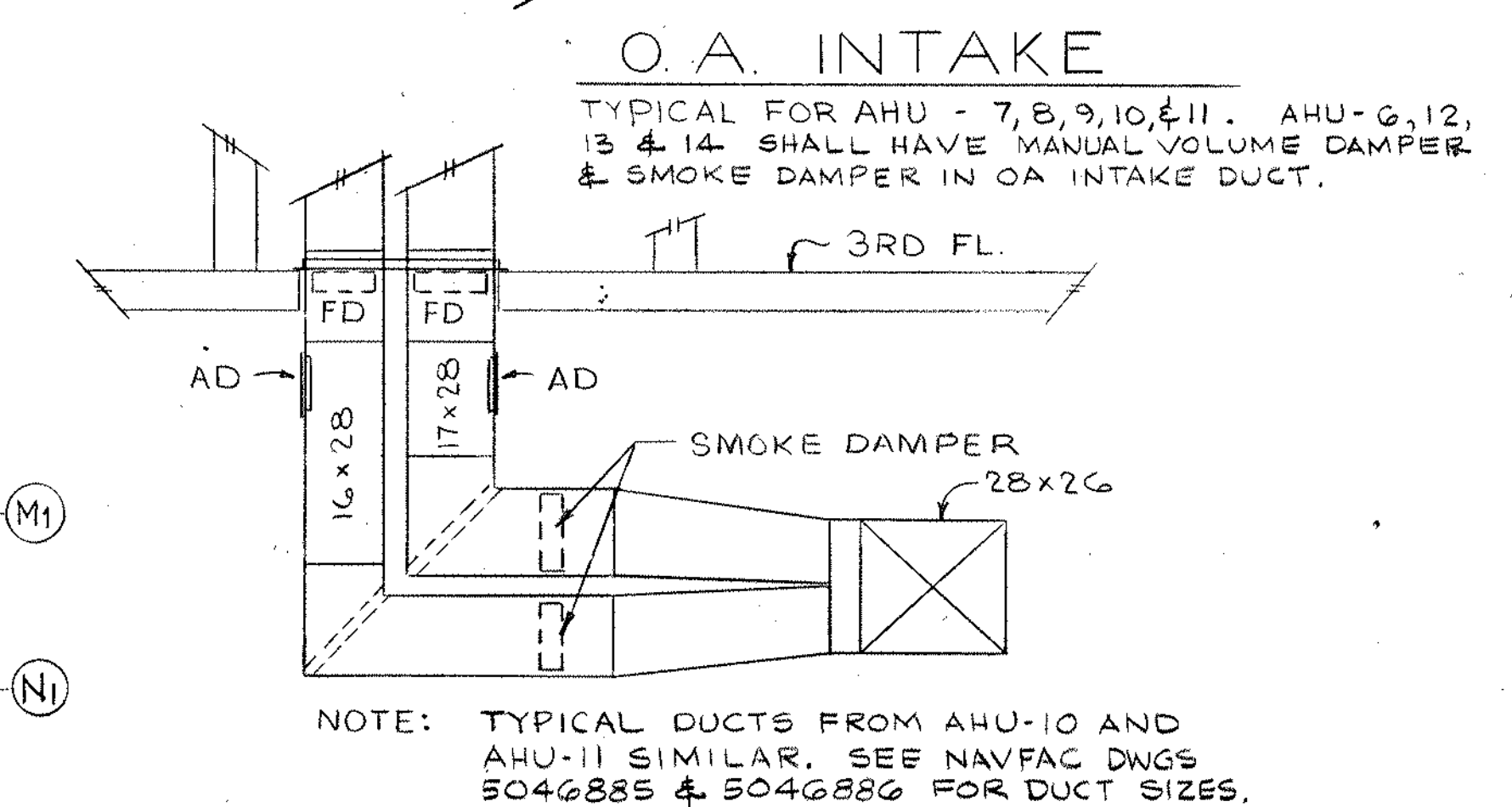
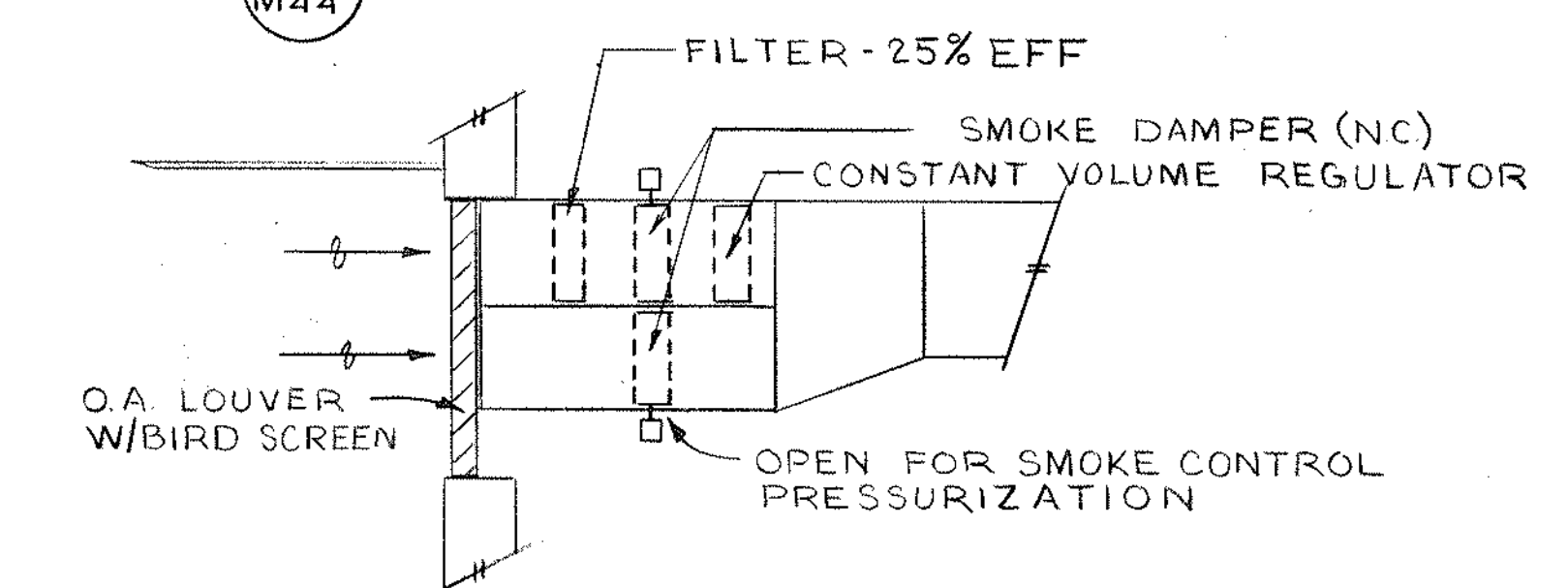
REVISIONS				
REV.	DESCRIPTION	PREP'D BY	DATE	APPROVED
REV. A	DRWG. CORRECTED TO AS-BUILT	BROWN	11-14-80	CHASE

NOTES:

1. PROVIDE PRESSURE RELIEF DMPS AT RETURN & SUPPLY AIR PLENUMS FOR AHUS 6 THRU 11.
2. PROVIDE MANUAL VOL. DMPS IN ZONE DUCTS 802, 803, 804 & 806 FOR AHU NO. 4 AND 902, 903, 905 & 906 FOR AHU NO. 9 AND IN EACH RA DUCT FOR AHU-1 THRU 12. DAMPERS TO BE LOCATED IN MECHANICAL ROOM.
3. FOR SMOKE DETECTOR LOCATIONS, SEE NAVFAC DWG NOS 5046887, 5046894 & 5046897.

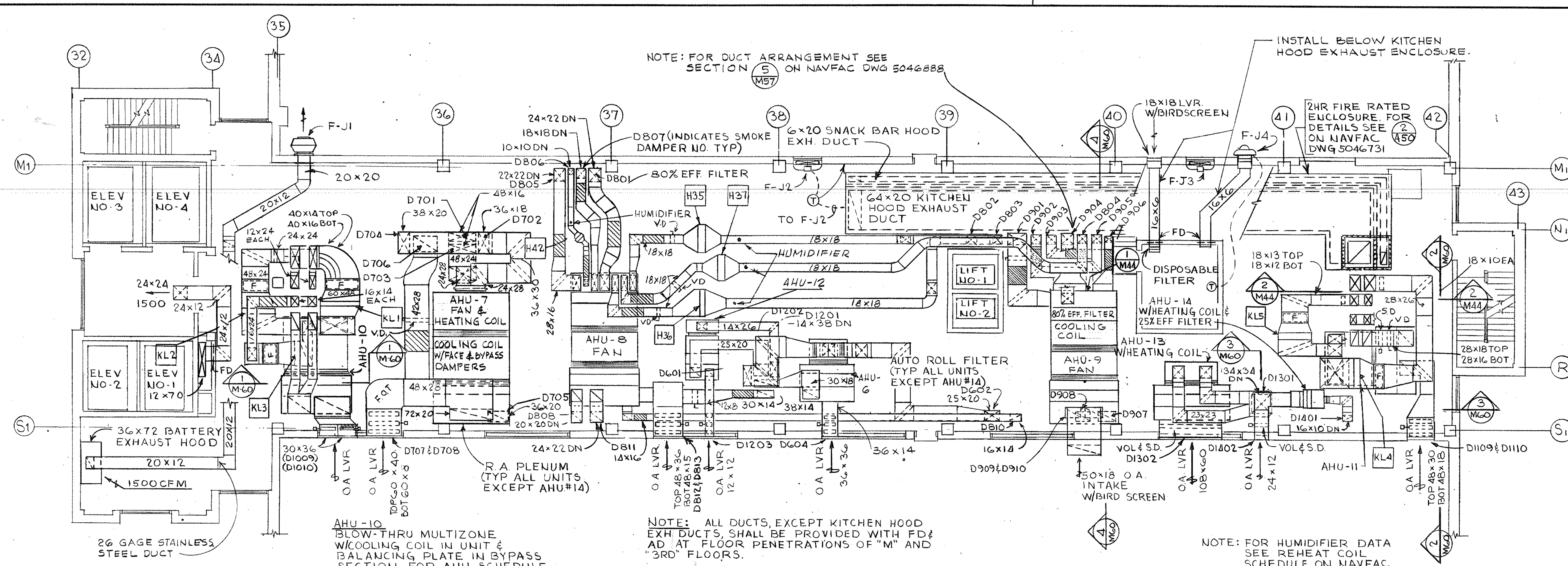


1 PLAN AHU-9 DISCHARGES

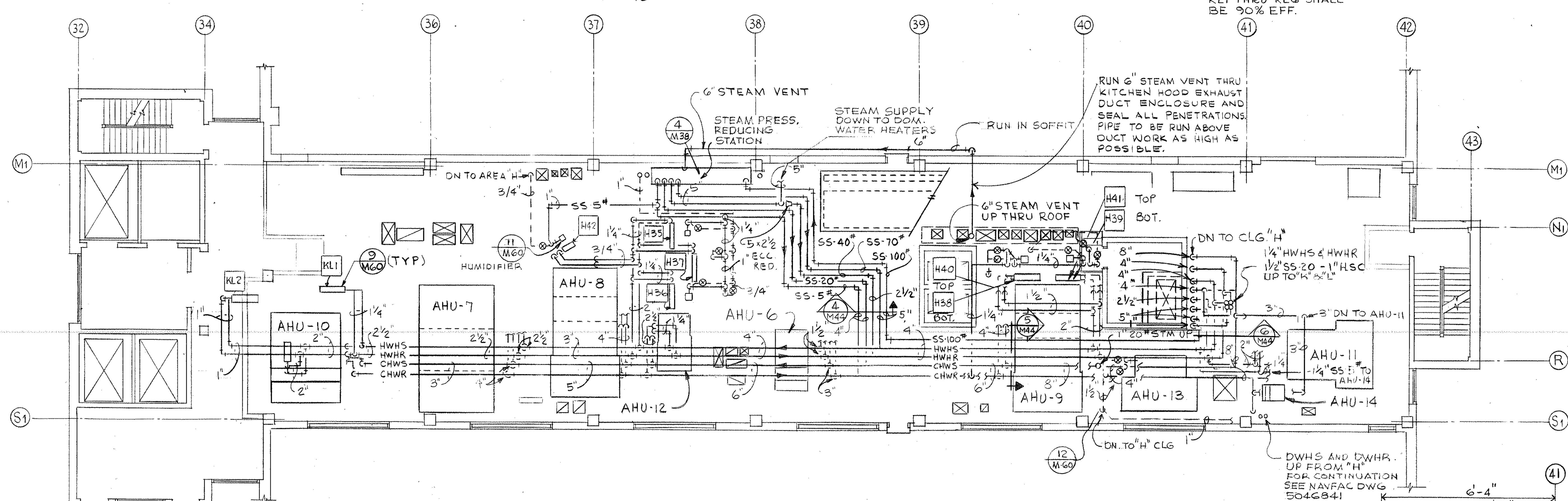


2 SECTION
SCALE 3/8" = 1'-0"

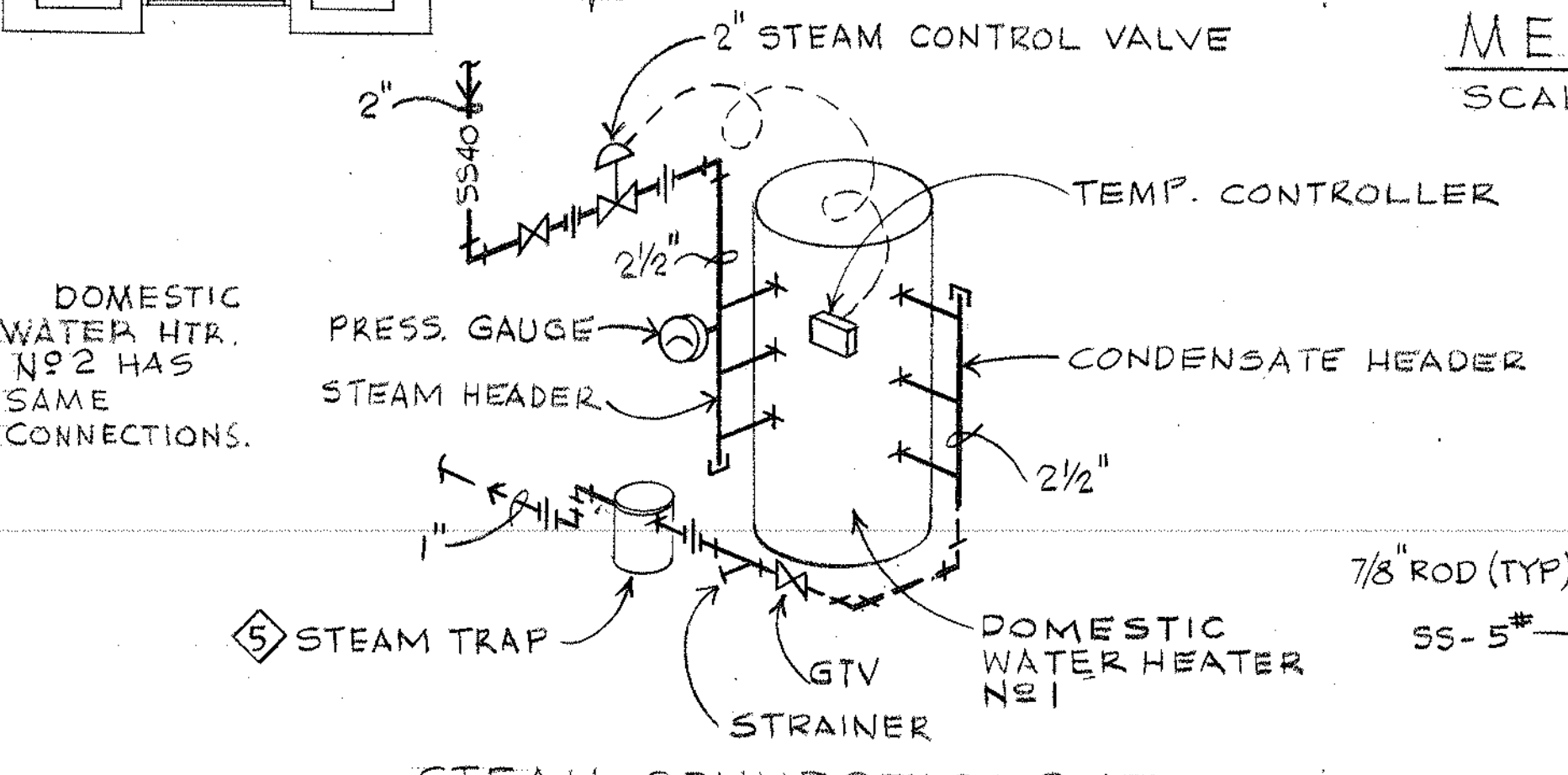
NOTE: 4. PROVIDE SOUND TRAP IN EACH SUPPLY DUCT (BEFORE ANY HUMIDIFIER) AND IN EACH RETURN DUCT FOR AHUS 7 THRU 11. TYPICAL SHOWN FOR DUCT 801 (AHU-8). SEE NAVFAC DWG 5046886 FOR SOUND TRAP DATA.



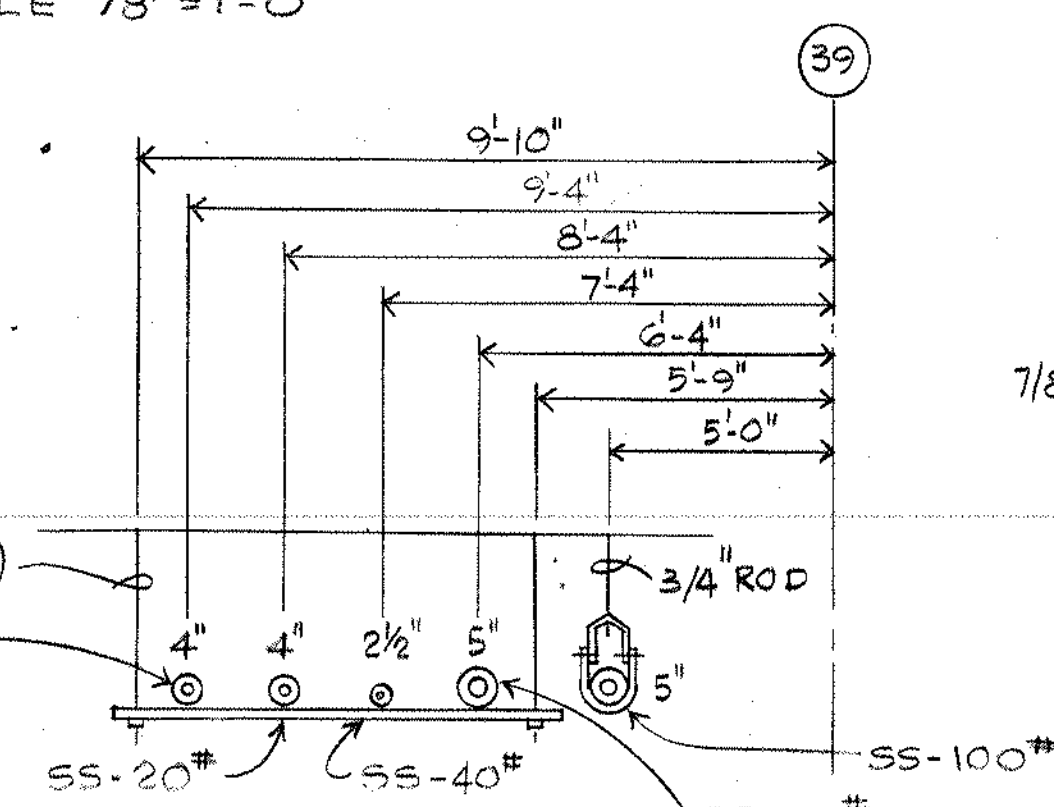
MECHANICAL ROOM DUCTWORK PLAN
SCALE 1/8" = 1'-0"



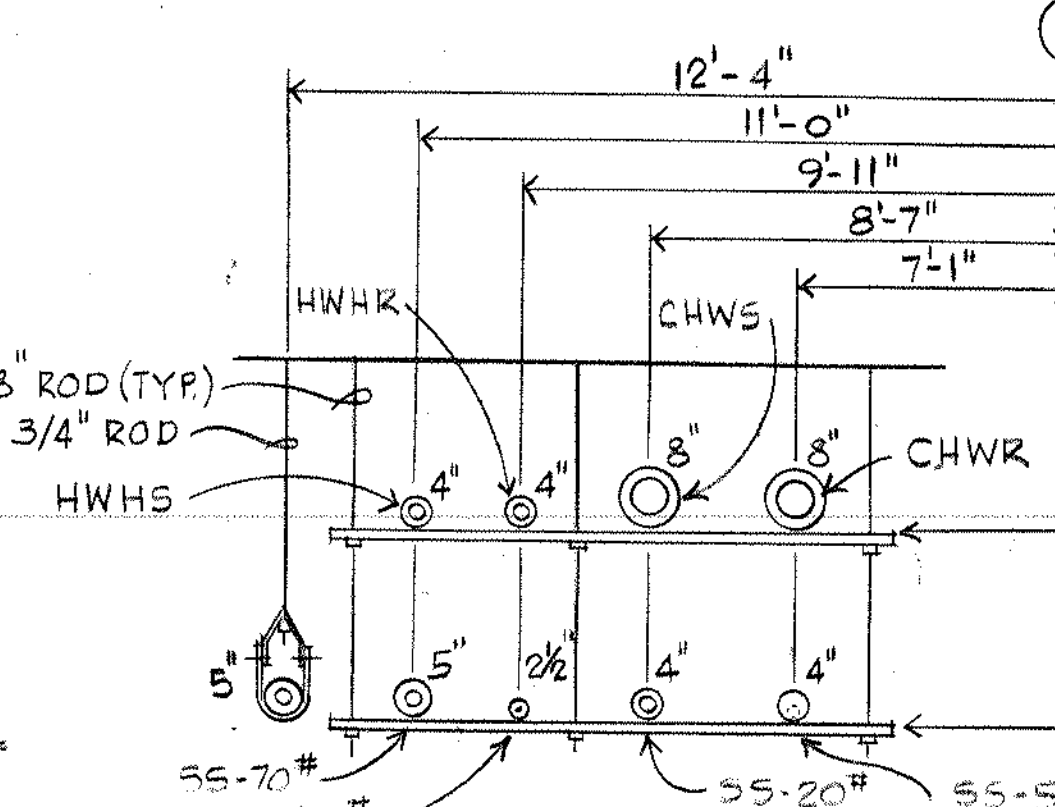
MECHANICAL ROOM PIPING PLAN
SCALE 1/8" = 1'-0"



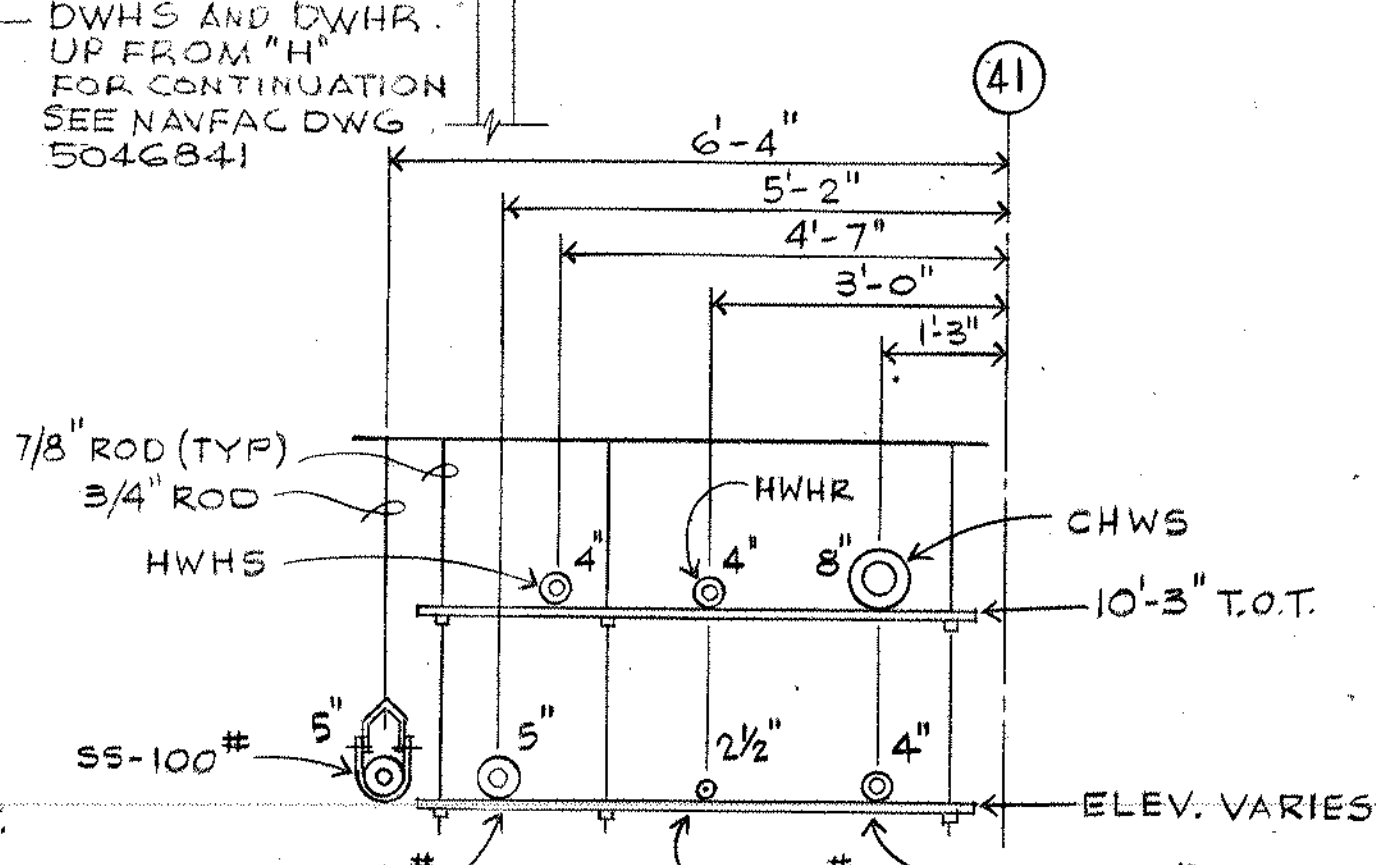
3 STEAM CONNECTIONS AT DOMESTIC WATER HEATERS
NOT TO SCALE



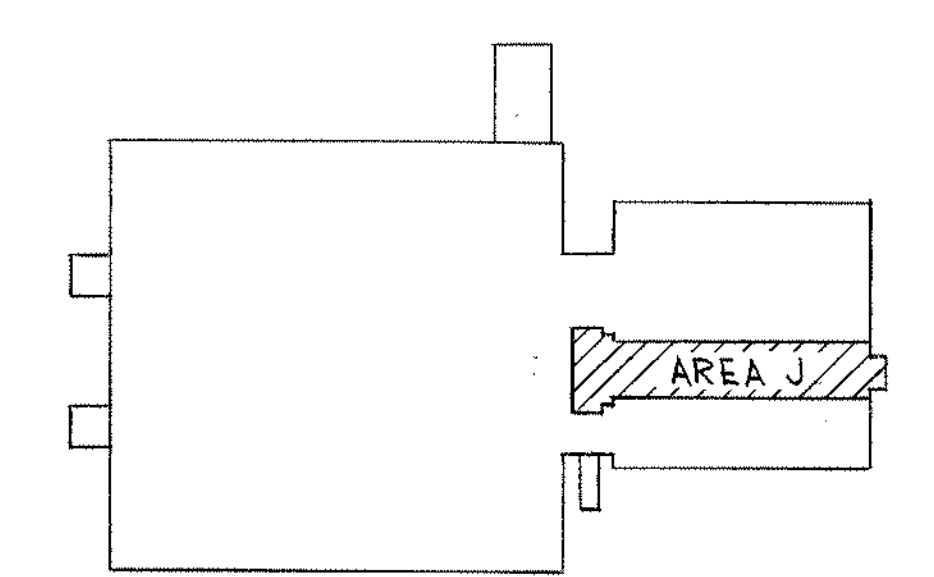
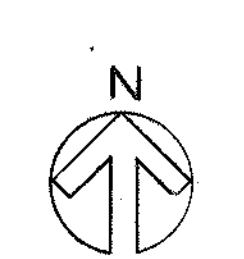
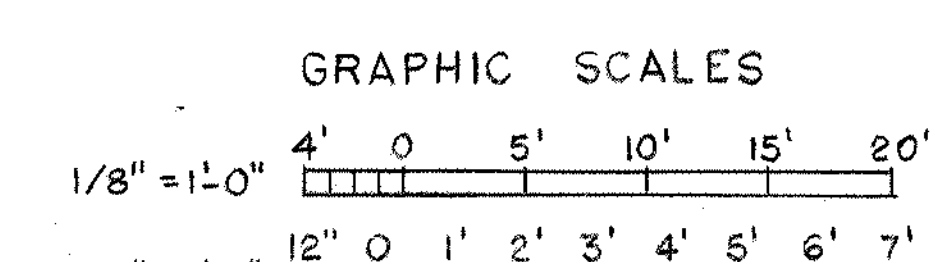
4 SECTION
NOT TO SCALE



5 SECTION
NOT TO SCALE



6 SECTION
NOT TO SCALE



KEY PLAN

ROGERS, LOVELOCK, FRITZ, ROGERS & BUTLER LOPATKA, MCQUIBB & WALL CORPORATION ARCHITECTS-ENGINEERS-PLANNERS WINTER PARK, FLORIDA 32789		DEPARTMENT OF THE NAVY NAVAL FACILITIES ENGINEERING COMMAND SOUTHERN DIVISION CHARLOTTE, S.C.	
DSGN: SEKARD, CHASE, CHASE SVP: CHASE SUBMITTED BY: [Signature] DATE: 11-18-77 FOR REVIEW: [Signature] SOUTHERN DIV - DESIGN DIVISION P.D. [Signature]		NAVAL REGIONAL MEDICAL CENTER ORLANDO, FLORIDA	
APPROVED: [Signature] OFFICER IN CHARGE		HOSPITAL REPLACEMENT HVAC PIPING & DUCTWORK PLANS, M FLOOR AREA "J"	
APPROVED: [Signature] FOR COMMANDER, NAVFAC		SIZE: 80091 CODE IDENT NO.: 5046875 CONSTR CONTR NO.: N62467-75-C-0340 SPEC 06-75-0340	

M 44