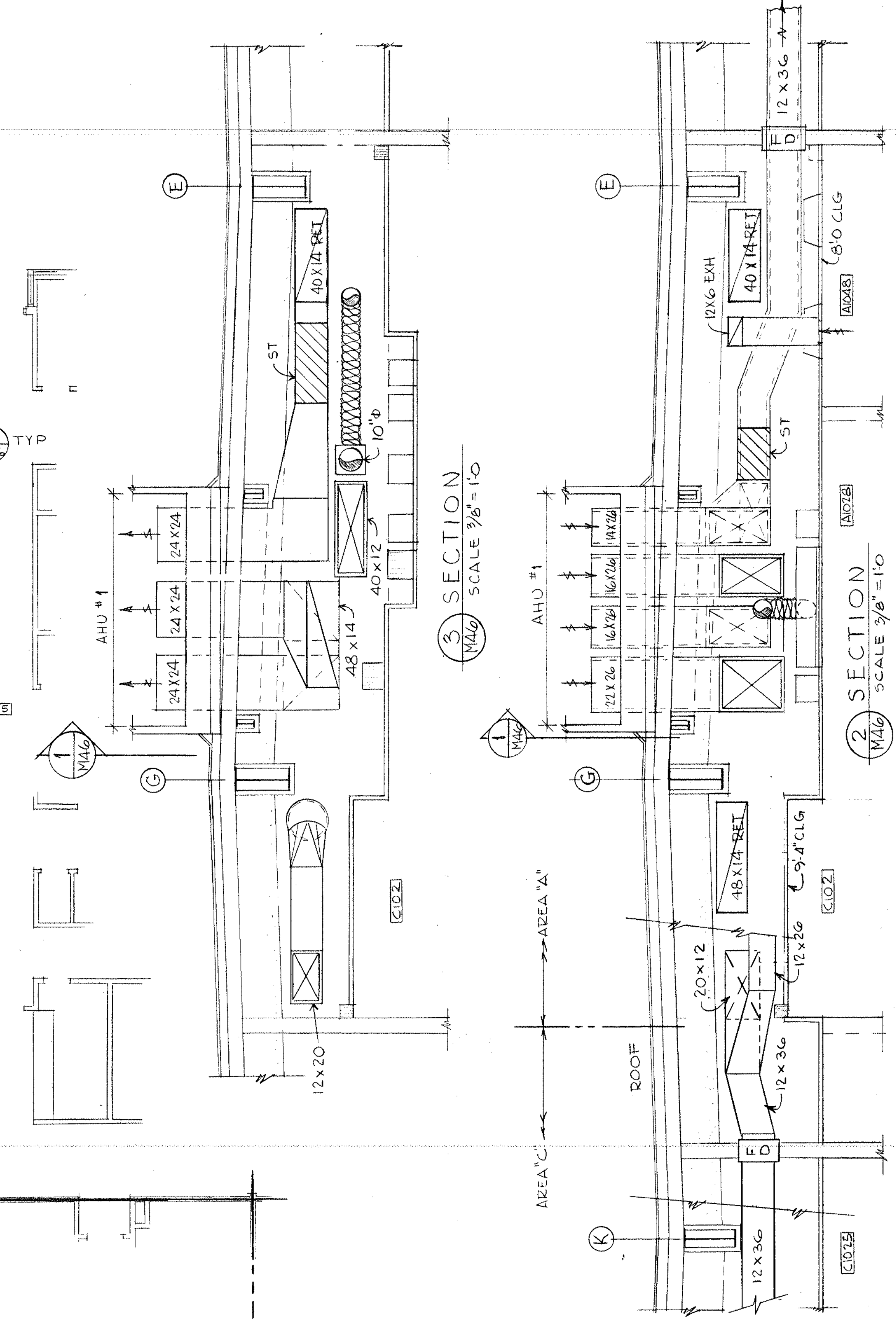
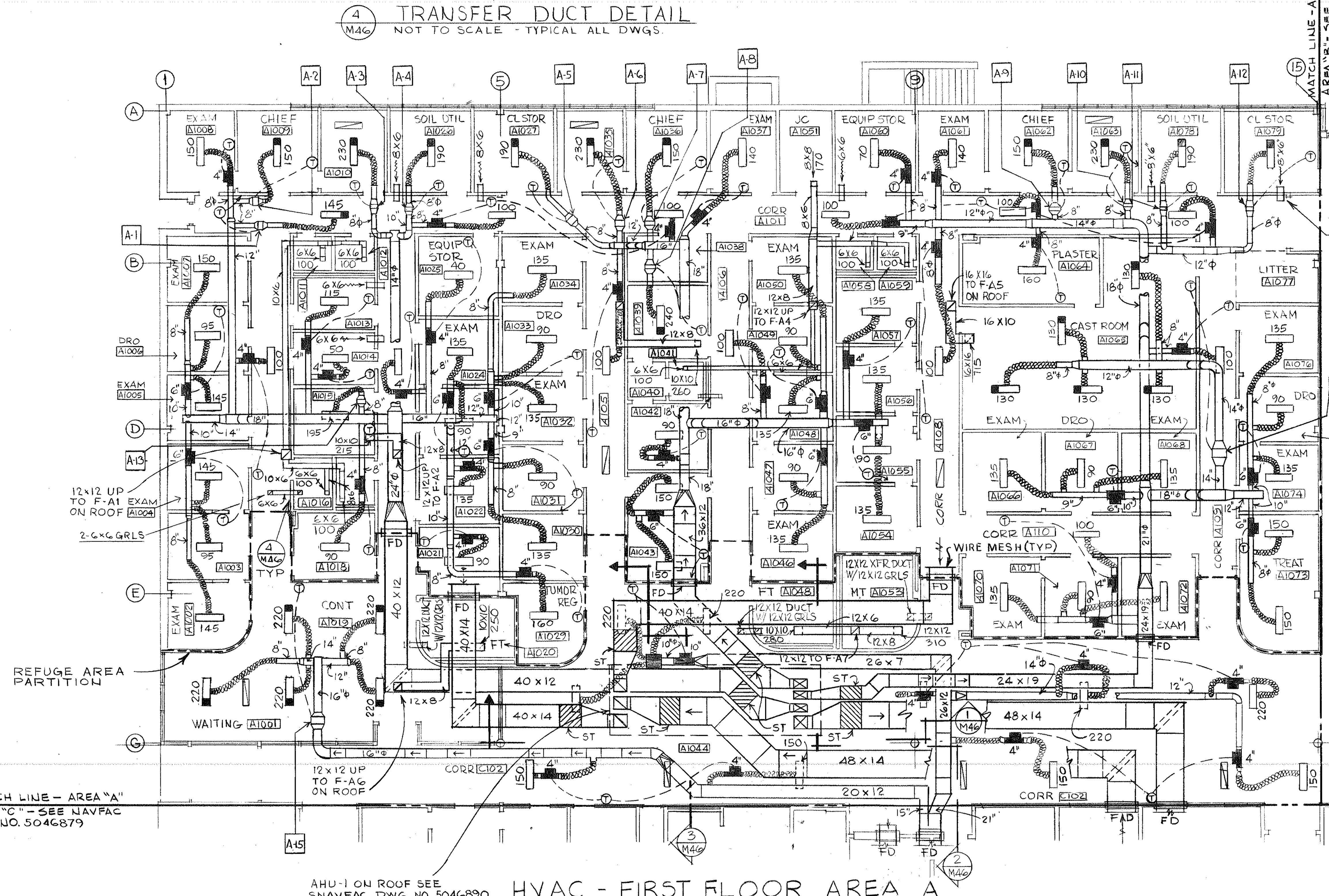
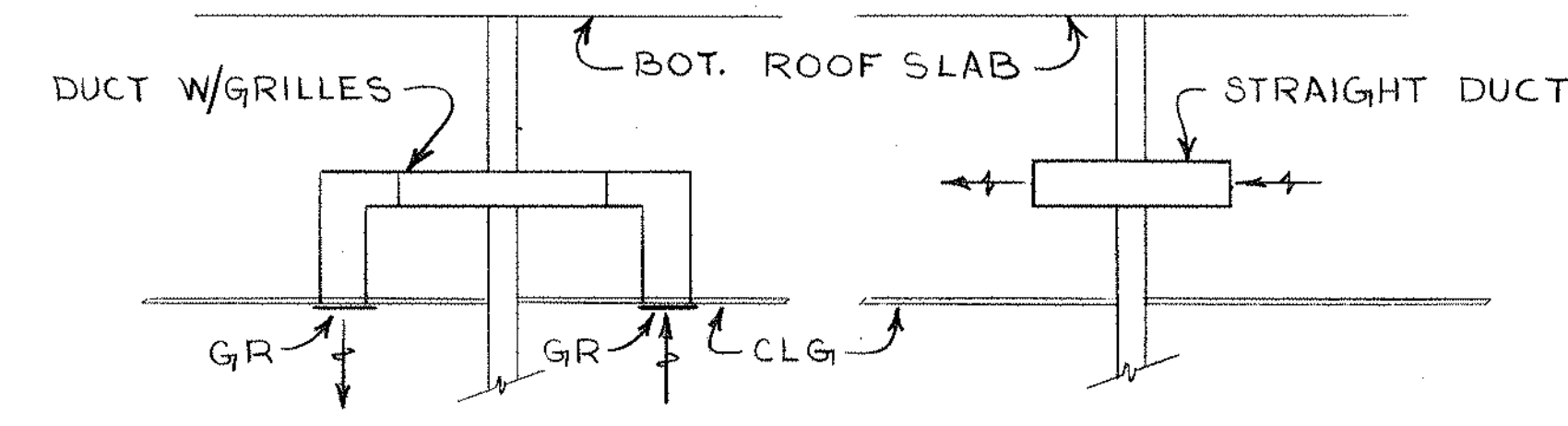


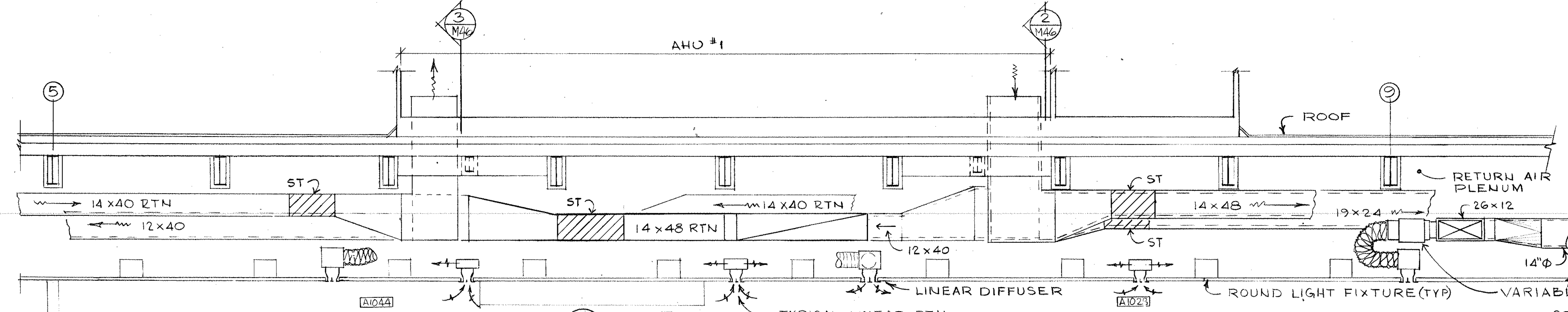
REVISIONS				
REV.	LET	DESCRIPTION	PREP'D BY	DATE
REV. A		DRWG. CORRECTED TO AS-BUILT	BROWN	11-1-82
			CHASE	



MATCH LINE - AREA "A"  
AREA "C" - SEE NAVFAC  
DWG. NO. 5046879

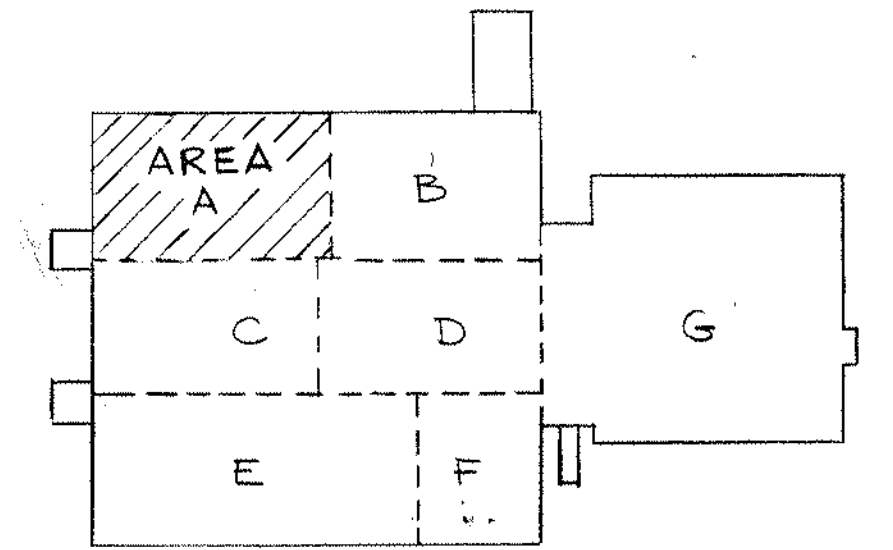
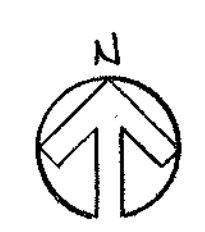
AHU-1 ON ROOF SEE  
SNAVFAC DWG. NO. 5046890

**HVAC - FIRST FLOOR AREA A**  
SCALE 1/8" = 1'-0"



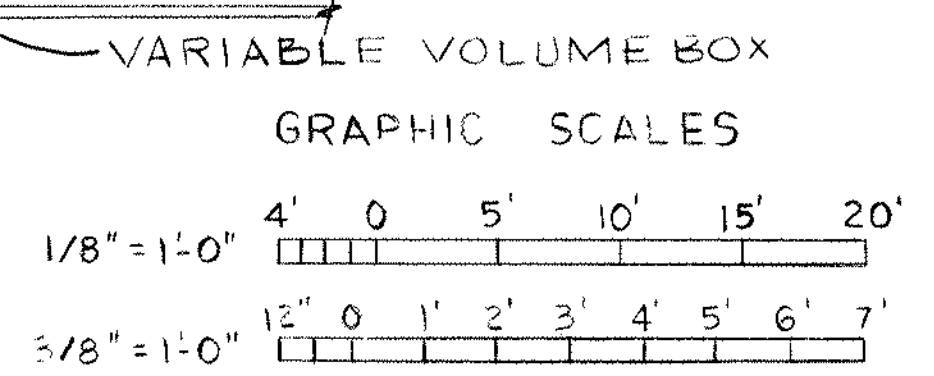
**SECTION 1**  
SCALE 3/8" = 1'-0"

- GENERAL NOTES:**
1. IN ALL DWGS, ALL DUCT DIMENSIONS SHOWN ARE CLEAR INSIDE SIZES IN INCHES.
  2. LOCATION OF AIR DEVICES SHALL BE AS SHOWN ON REFLECTED CEILING PLANS.
  3. LAYOUT OF DUCTWORK SHALL CONFORM TO THE EXACT LOCATIONS. SEE NAVFAC DWG NOS. 5046732 THRU 5046741.
  4. FOR PIPING CONNECTIONS TO DUCT HEATING COILS, SEE NAVFAC DWG NO. 5046871 THRU 5046876.
  5. COORDINATE THERMOSTAT LOCATIONS WITH EQUIPMENT LAYOUT.
  6. COORDINATE DUCT SIZES THRU ROOF FOR POWER ROOF VENTILATORS, WITH APPROVED EQUIPMENT REQUIREMENTS.
  7. FOR CLINIC AREA ROOF PLAN SEE NAVFAC DWG NO. 5046868.
  8. FOR SOUND TRAP (ST) DATA SEE NAVFAC DWG NO. 5046886.



KEY PLAN

11-1-82



**M46**

ROGERS, LOVELL, FRITZ, ROGERS & BUTLER ARCHITECTS - ENGINEERS - PLANNERS 1001 N. W. 10th Ave., Suite 200 Fort Lauderdale, Florida 33304		DEPARTMENT OF THE NAVY NAVAL FACILITIES ENGINEERING COMMAND SOUTHERN DIVISION CHARLESTON, S. C.	
SUBMITTED BY WILLIAM W. HALL DATE 20 FEB 77		NAVAL REGIONAL MEDICAL CENTER ORLANDO, FLORIDA	
OFFICER IN CHARGE DATE 20 FEB 77		<b>HOSPITAL REPLACEMENT</b>	
APPROVED DATE 20 FEB 77		HVAC PLAN & SECTIONS AREA "A"	
EFD FOR COMMANDER, NAVFAC		SIZE F	CODE IDENT NO. 80091
		NAVFAC DRAWING NO. 5046877	CONSTR CONTR NO. N62467-75-C-0340
		SCALE AS SHOWN	SPEC 06-75-0340 SHEET 286 OF