

ELECTRICAL ABBREVIATIONS	
WHERE ABBREVIATIONS ARE USED IN THE DOCUMENTS AND NOT LISTED IN THE FOLLOWING, REFER TO ANSWEIEE STANDARD 100 AND FOR MECHANICAL EQUIPMENT REFER TO THE MECHANICAL SYSTEMS ABBREVIATIONS SCHEDULE.	
AC	ALTERNATING CURRENT
AL	ALUMINUM
AF	ABOVE FINISHED FLOOR
AFG	ABOVE FINISHED GRADE
ATS	AUTOMATIC TRANSFER SWITCH
AWG	AMERICAN WIRE GAUGE
BC	BELOW CEILING
BKR	BREAKER
CATV	COMMUNITY ACCESS TELEVISION
CB	CIRCUIT BREAKER
CCTV	CLOSED CIRCUIT TELEVISION
CKT	CIRCUIT
CLG	CEILING
CO	CONDUIT ONLY
CNTL	CONTROL
CPU	CENTRAL PROCESSING UNIT
CU	COPPER
CT	CURRENT TRANSFORMER
DC	DIRECT CURRENT
Δ	DELTA
DIM	DIMMER
DISC	DISCONNECT SWITCH
DN	DOWN
E	EMERGENCY
EC	EMPTY CONDUIT
EX	EXISTING
FA	FIRE ALARM
FACP	FIRE ALARM CONTROL PANEL
FDR	FEEDER
FL	FLOOR
F	FUSE OR FUSED
FVNR	FULL VOLTAGE NON-REVERSING
GEN	GENERATOR
GFCI	GROUND FAULT CIRCUIT INTERRUPTER
GF	GROUND FAULT PROTECTION
GRC OR GRS	GALVANIZED RIGID STEEL CONDUIT
G OR GND	GROUND
H OR HT	HEIGHT
HID	HIGH INTENSITY DISCHARGE
HP	HORSEPOWER
HDA	HAND-OFF-AUTOMATIC
HZ	HERTZ
IS	ISOLATED GROUND
ISO	ISOLATED
J OR JB	JUNCTION BOX
K	KILO, THOUSAND
KCMIL	THOUSAND CIRCULAR MILLS
LED	LIGHT EMITTING DIODE
M	MOTOR
MATV	MASTER ANTENNA TELEVISION
MCB	MAIN CIRCUIT BREAKER
MCC	MOTOR CONTROL CENTER
MH	MAN HOLE
MLO	MAIN LUGS ONLY
MT	MOUNT
MTG	MOUNTING
NC	NORMALLY CLOSED
NEC	NATIONAL ELECTRICAL CODE
NF	NON FUSED
NFPA	NATIONAL FIRE PROTECTION ASSOCIATION
NIC	NOT IN CONTRACT
NL	NIGHT LIGHT
NO	NORMALLY OPEN
NTS	NOT TO SCALE
OC	ON CENTER
OL	OVERLOAD
P	POLE
PC	PHOTOELECTRIC CONTROL
PNL	PANELBOARD
PT	POTENTIAL TRANSFORMER
PVC	POLY-VINYL CHLORIDE
R	RELAY
RC	REMOTE CONTROL
RECPT	RECEPTACLE
REF	REFERENCE
RMS	ROOT MEAN SQUARE
SFL	SUB FED LUGS
SYM	SYMMETRICAL
SW	SWITCH
SWBD	SWITCHBOARD
TBB	TELEPHONE BACKBOARD
TEL	TELEPHONE
TV	TELEVISION
TVSS	TRANSIENT VOLTAGE SURGE SUPPRESSOR
TYP	TYPICAL
UG	UNDERGROUND
UL	UNDERWRITERS LABORATORY
UPS	UNINTERRUPTED POWER SUPPLY
V	VOLTS
VA	VOLT-AMPERE
W	WATTS
WP	WEATHERPROOF WHILE IN USE
WR	WEATHER RESISTANT
XFMR	TRANSFORMER
XP	EXPLOSION PROOF
Y	WYE
Z	IMPEDANCE

ELECTRICAL SYMBOL LEGEND			
SYMBOL	DESCRIPTION	NOTES	MTG. HT.
⌚	SINGLE POLE SINGLE THROW TOGGLE SWITCH		48"
⌚⌚	TWO SINGLE POLE SINGLE THROW TOGGLE SWITCHES AND BALLAST COMBINATION TO CONTROL OUTER LAMPS ON ONE SWITCH AND INNER LAMP(S) ON THE OTHER SWITCH		48"
⌚	DOUBLE POLE SINGLE THROW TOGGLE SWITCH		48"
⌚	THREE-WAY TOGGLE SWITCH		48"
⌚	FOUR-WAY TOGGLE SWITCH		48"
⌚	SINGLE POLE SINGLE THROW TOGGLE SWITCH WITH PILOT LAMP		48"
⌚	SINGLE POLE SINGLE THROW KEYED TOGGLE SWITCH		48"
⌚	SINGLE POLE SINGLE THROW PRESSURE TYPE TOGGLE SWITCH		
⌚	MANUAL MOTOR RATED SWITCH WITH OVERLOAD PROTECTION		
⌚	DIMMER SWITCH		48"
⌚	THREE-WAY DIMMER SWITCH		48"
⌚	INFRARED OCCUPANCY SENSOR WITH MANUAL ON/OFF SWITCH		80" / -
⌚	ULTRASONIC OCCUPANCY SENSOR, WALL / CEILING MOUNTED		80" / -
⌚	INFRARED OCCUPANCY SENSOR, WALL / CEILING MOUNTED		80" / -
⌚	DUAL TECHNOLOGY OCCUPANCY SENSOR, WALL / CEILING MOUNTED		80" / -
⌚	OCCUPANCY SENSOR POWER PACK		
⌚	SINGLE RECEPTACLE WALL / FLOOR / CEILING MOUNTED		18" / - / -
⌚	DUPLEX RECEPTACLE WALL / FLOOR / CEILING MOUNTED		18" / - / -
⌚	DOUBLE DUPLEX RECEPTACLE WALL / FLOOR / CEILING MOUNTED		
⌚	ABOVE COUNTER RECEPTACLE SINGLE / DUPLEX / DOUBLE DUPLEX	ARCHITECT	
⌚	SPLIT WIRE DUPLEX RECEPTACLE WALL / FLOOR / CEILING MOUNTED		18" / - / -
⌚	SWITCH CONTROLLED DUPLEX RECEPTACLE WALL / FLOOR / CEILING MOUNTED		18" / - / -
⌚	SPECIAL PURPOSE RECEPTACLE WALL / FLOOR / CEILING MOUNTED	L-5	18" / - / -
⌚	CLOCK RECEPTACLE WALL MOUNTED		
⌚	JUNCTION BOX WALL / FLOOR / CEILING OR EQUIPMENT MOUNTED		
⌚	POKE-THRU JUNCTION BOX		
⌚	POWER POLE		
(DED)	DEDICATED CIRCUIT	L-7	
⌚	ARROWHEAD INDICATES HOMERUN, X-1,3,5 ADJACENT TO HOMERUN		
⌚	ARROWHEADS INDICATES HOMERUN TO PANEL X, CIRCUIT NUMBERS 1,3, AND 5.	L-1,7,8	
⌚	INDICATES CIRCUIT CONTINUATION OF PANEL X CIRCUITS 3 AND 5	L-1,7,8	
⌚	RACEWAY INSTALLED CONCEALED IN WALL AND/OR ABOVE CEILING		
⌚	RACEWAY INSTALLED CONCEALED IN SLAB OR BELOW GRADE		
⌚	RACEWAY INSTALLED EXPOSED		
⌚	GROUND		
⌚	FLEXIBLE RACEWAY (6"-9" MAX LENGTH)		
⌚	CONDUIT UP / CONDUIT DOWN		
⌚	CONDUIT TERMINATION (STUB-OUT)		
⌚	CONDUIT CONTINUATION		
⌚	BUS DUCT (SIZE/RATING AS NOTED)		
⌚	MULTIPLE RACEWAY		
⌚	CABLE TRAY		
⌚	CABLE TRAY ELBOW AND 'T' CONNECTORS		
⌚	HANDHOLE		
⌚	MANHOLE		
⌚	FLUORESCENT LIGHT FIXTURE, OVERHEAD / WALL MOUNTED		
⌚	FLUORESCENT STRIP OR INDUSTRIAL LIGHT FIXTURE		
⌚	LIGHT FIXTURE CEILING MOUNTED		
⌚	LIGHT FIXTURE WALL MOUNTED		
⌚	DIRECTIONAL OR WALL WASH LIGHT FIXTURE		
⌚	EXIT SIGN INTERNALLY ILLUMINATED CEILING / WALL MOUNTED. PROVIDE ARROWS AS INDICATED.		
⌚	EGRESS AND/OR EMERGENCY LIGHT FIXTURE		
⌚	EGRESS AND/OR EMERGENCY LIGHT FIXTURE, HALF OF LAMPS OR CENTER LAMP ON EMERGENCY CIRCUIT.		
⌚	TRACK LIGHT HEADS AND TRACK		
⌚	STEP LIGHT		
⌚	LANDSCAPE UPLIGHT FIXTURE		
⌚	BOLLARD FIXTURE AND BASE		
⌚	SINGLE HEAD POLE MOUNTED EXTERIOR SITE LIGHTING FIXTURE		
⌚	DOUBLE HEAD POLE MOUNTED EXTERIOR SITE LIGHTING FIXTURE		
⌚	QUADRUPLE HEAD POLE MOUNTED EXTERIOR SITE LIGHTING FIXTURE		
⌚	LIGHT FIXTURE WITH BATTERY BACKUP GRID, RECESSED, OR SURFACE MOUNT		
⌚	FIRE ALARM CONTROL PANEL		
⌚	FIRE ALARM ANNUNCIATOR PANEL		
⌚	FIRE ALARM MANUAL INITIATING STATION		48"
⌚	FIRE ALARM AUDIO NOTIFICATION APPLIANCE, WALL / CEILING MOUNTED	L-9	80" / -
⌚	FIRE ALARM AUDIO AND VISUAL NOTIFICATION APPLIANCE, WALL / CEILING MOUNTED	L-10,11	80" / -
⌚	FIRE ALARM VISUAL NOTIFICATION APPLIANCE, WALL / CEILING MOUNTED	L-10,11	80" / -
⌚	FIRE ALARM MINI HORN, WALL / CEILING MOUNTED.	L-9	80" / -
⌚	FIRE ALARM BELL, WALL MOUNTED		
⌚	INDICATES CANDELA INTENSITY, DECIBEL RATING AND ZONE OF FIRE ALARM ANNUNCIATION DEVICES.		
⌚	SMOKE DETECTOR, WALL / CEILING MOUNTED		
⌚	HEAT DETECTOR, WALL / CEILING MOUNTED		
⌚	CARBON MONOXIDE DETECTOR, WALL / CEILING MOUNTED		
⌚	DUCT DETECTOR		
⌚	MAGNETIC DOOR HOLDER AND RELEASE, WALL / HARDWARE MOUNTED		
⌚	COMBINATION SMOKE DETECTOR AND MAGNETIC DOOR HOLDER AND RELEASE		
⌚	FIRE COMMUNICATIONS TELEPHONE JACK	48"	
⌚	FLUSH MOUNTED PANELBOARD		
⌚	SURFACE MOUNTED PANELBOARD		
⌚	MOTOR		

ELECTRICAL SYMBOL LEGEND			
SYMBOL	DESCRIPTION	NOTES	MTG. HT.
⌚	NON-FUSIBLE DISCONNECT SWITCH. RATING / POLES / NEMA ENCLOSURE		
⌚	FUSIBLE DISCONNECT SWITCH. RATING / POLES / NEMA ENCLOSURE / FUSE RATING		
⌚	MAGNETIC MOTOR STARTER. NEMA SIZE RATING / NEMA ENCLOSURE		
⌚	COMBINATION MAGNETIC MOTOR STARTER AND DISCONNECTING MEANS. NEMA SIZE RATING / NEMA ENCLOSURE / FUSE RATING (WHERE REQUIRED)		
⌚	VARIABLE SPEED SOLID STATE STARTER AND DISCONNECTING MEANS. NEMA SIZE RATING / NEMA ENCLOSURE		
⌚	EQUIPMENT AS INDICATED		
⌚	TIME CLOCK		
⌚	CONTACTOR		
⌚	VOICE DATA OUTLET, WALL / FLOOR / ABOVE COUNTER	L-4	18" / - / -
⌚	MULTI VOICE DATA OUTLET, WALL / FLOOR / ABOVE COUNTER	L-3	18" / - / -
⌚	TELEVISION OUTLET, WALL / FLOOR / CEILING MOUNTED		18" / - / -
⌚	TELECOMMUNICATIONS BACKBOARD.	L-6	18"
⌚	LOW VOLTAGE PUSH BUTTON		48"
⌚	AMMETER		
⌚	VOLTMETER		
⌚	DOOR CHIME		

SYMBOL LEGEND NOTES

L-1	EQUIPMENT GROUNDING CONDUCTORS SHALL BE INSTALLED IN ALL BRANCH CIRCUIT RACEWAYS.
L-2	UNLESS NOTED, MOUNTING HEIGHT DIMENSIONS ARE TO THE CENTER OF THE DEVICE OR OUTLET ABOVE FINISHED GRADE OR FINISHED FLOOR.
L-3	FURNISH AND INSTALL 3/4" CONDUIT HOMERUNS TO NEAREST TELEPHONE BACKBOARD, UNLESS OTHERWISE INDICATED OR SPECIFIED.
L-4	FURNISH AND INSTALL 3/4" CONDUIT HOMERUNS TO NEAREST DATA SYSTEM BACKBOARD
L-5	SPECIAL PURPOSE RECEPTACLE OUTLET, REFER TO KEYNOTES ON RESPECTIVE DRAWING FOR DESCRIPTION.
L-6	TELEPHONE BACKBOARD TO BE PLYWOOD PAINTED WITH LOW SMOKE RELEASE PAINT. PROVIDE GROUND CONDUCTOR AND DOUBLE DUPLEX RECEPTACLE. REFER TO SPECIFICATIONS.
L-7	DEDICATED CIRCUITS SHALL NOT SHARE A COMMON GROUND OR NEUTRAL CONDUCTOR WITH NON-DEDICATED CIRCUITS. DEDICATED CIRCUITS SHALL BE INSTALLED IN INDIVIDUAL RACEWAY SYSTEMS. DEDICATED CIRCUIT HOMERUNS SHALL NOT BE COMBINED TO SHARE NEUTRAL OR GROUND CONDUCTORS.
L-8	NON-DEDICATED BRANCH CIRCUITS SHALL CONSIST OF ONE PHASE CONDUCTOR, ONE NEUTRAL CONDUCTOR AND ONE GROUND CONDUCTOR. SINGLE PHASE HOMERUNS MAY BE COMBINED INTO THREE PHASE (a,b,c) 5-WIRE HOMERUNS AT THE DISCRETION OF THE CONTRACTOR.
L-9	MOUNTING HEIGHT DIMENSIONS ARE TO THE BOTTOM OF THE DEVICE ABOVE FINISHED GRADE OR FINISHED FLOOR.
L-10	MOUNTING HEIGHT FOR THE BOTTOM OF THE AUDIBLE/VISUAL AND VISUAL DEVICE LENS SHALL BE 80" ABOVE FINISHED GRADE OR FINISHED FLOOR.
L-11	VISUAL DEVICES LOCATED IN SLEEPING AREAS AND MOUNTED WITHIN 24" OF THE CEILING SHALL BE 177CD.

GRAPHICS LEGEND

SYMBOL	DESCRIPTION
⌚	KEY NOTE
⌚	COLUMN REFERENCE GRID
⌚	CUT LINE
⌚	DRAWING TITLE
⌚	SHEET NUMBER
⌚	DRAWING NUMBER
⌚	SHEET NUMBER
⌚	AREA TO BE DETAILED
⌚	REVISION AREA
⌚	REVISION DELTA

GENERAL NOTES

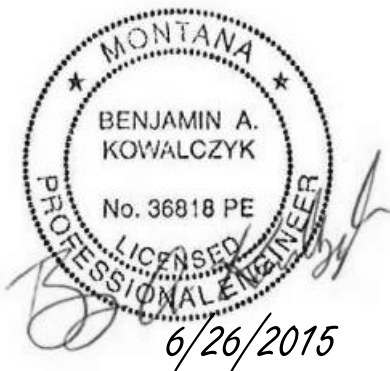
- ALL SYMBOLS INDICATED IN LEGEND(S) MAY NOT NECESSARILY BE USED ON THIS PROJECT.
- THE DRAWINGS ARE DIAGRAMMATIC IN NATURE AND INDICATE THE GENERAL ARRANGEMENT OF ELECTRICAL EQUIPMENT. REVIEW ARCHITECTURAL DRAWINGS FOR DOOR SWINGS, CABINETS, COUNTERS, AND BUILT-IN EQUIPMENT. CONDITIONS INDICATED ON ARCHITECTURAL PLANS SHALL GOVERN. COORDINATE INSTALLATION OF ELECTRICAL EQUIPMENT WITH STRUCTURAL SYSTEM AND MECHANICAL EQUIPMENT AND ACCESS THERETO. COORDINATE INSTALLATION OF RECESS ELECTRICAL EQUIPMENT WITH CONCEALED DUCTWORK AND PIPING. REFER TO ARCHITECTURAL DRAWINGS AND/OR INTERIOR DESIGN DRAWINGS FOR ALL DIMENSIONS AND STANDARD DETAILS. DO NOT SCALE.
- CAPITAL LETTERS BESIDE LIGHTING SYMBOL INDICATES FIXTURE TYPE. WHERE INDICATED ON DRAWINGS LOWER CASE LETTER INDICATES SWITCH LEG, DIMMER OR CONTROL DESIGNATION.
- NUMERAL BESIDE EQUIPMENT, DEVICE, OR OUTLETS INDICATES CIRCUIT CONNECTION.
- WHEN CONDUCTOR OR CONDUIT SIZE IS INDICATED FOR BRANCH CIRCUIT HOMERUN, THE CONDUCTOR AND CONDUIT SIZE INDICATED SHALL BE USED FOR THE COMPLETE CIRCUIT UNLESS OTHERWISE INDICATED.
- EXTEND THREE (3) EMPTY 1" CONDUITS FROM EACH FLUSH MOUNTED PANEL TO POSITION ABOVE ACCESSIBLE CEILING, IF APPLICABLE.
- PROVIDE OUTLET BOX FITTING FOR EACH DEVICE. SIZE TO ACCOMMODATE DEVICE AND CONDUCTORS.
- WALL SWITCHES CONTROLLING 277 VAC CIRCUIT OF OPPOSITE PHASES (OR 120VAC) SHALL NOT BE INSTALLED IN A COMMON BOX UNLESS A PERMANENT BARRIER IS PROVIDED.
- ALL CONDUITS PENETRATING ROOF SHALL BE SEALED. SEE ARCHITECTURAL DOCUMENTS AND DETAILS.
- ALL RACEWAY AND EQUIPMENT SUPPORTS AND HANGERS SHALL BE ATTACHED TO STRUCTURAL MEMBERS. COORDINATE WITH STRUCTURAL DOCUMENTS.
- DISCONNECT SWITCHES, MOTOR STARTERS, AND OTHER ELECTRICAL EQUIPMENT INSTALLED ABOVE ACCESSIBLE CEILINGS AND REQUIRING ACCESS FOR MAINTENANCE, SHALL BE INSTALLED WITH BOTTOM OF DEVICE A MAXIMUM OF ONE (1) FOOT ABOVE CEILING TO PROVIDE READY ACCESSIBILITY. CODE AND MANUFACTURER REQUIRED CLEARANCES SHALL BE MAINTAINED.
- ACCESS PANELS SHALL BE CONSOLIDATED TO MINIMIZE THE QUANTITY REQUIRED. COORDINATE LOCATION WITH ARCHITECTURAL DOCUMENTS. THE PROPOSED LOCATION OF ACCESS PANELS SHALL BE SUBMITTED TO ARCHITECT FOR REVIEW PRIOR TO INSTALLATION.
- ALL CIRCUIT SHALL BE #12, #125, 34°C UNLESS NOTED OTHERWISE.
- ALL LOW VOLTAGE SYSTEMS TO BE BY OWNER'S VENDOR. CONDUIT AND BOXES BY CONTRACTOR.

COORDINATION NOTES

- REVIEW ALL SPECIFICATIONS AND DOCUMENTS FOR ELECTRICAL REQUIREMENTS AND LOCATION OF EQUIPMENT REQUIRING ELECTRICAL SERVICE. PROVIDE SERVICE TO AND MAKE CONNECTIONS TO ALL SUCH EQUIPMENT.

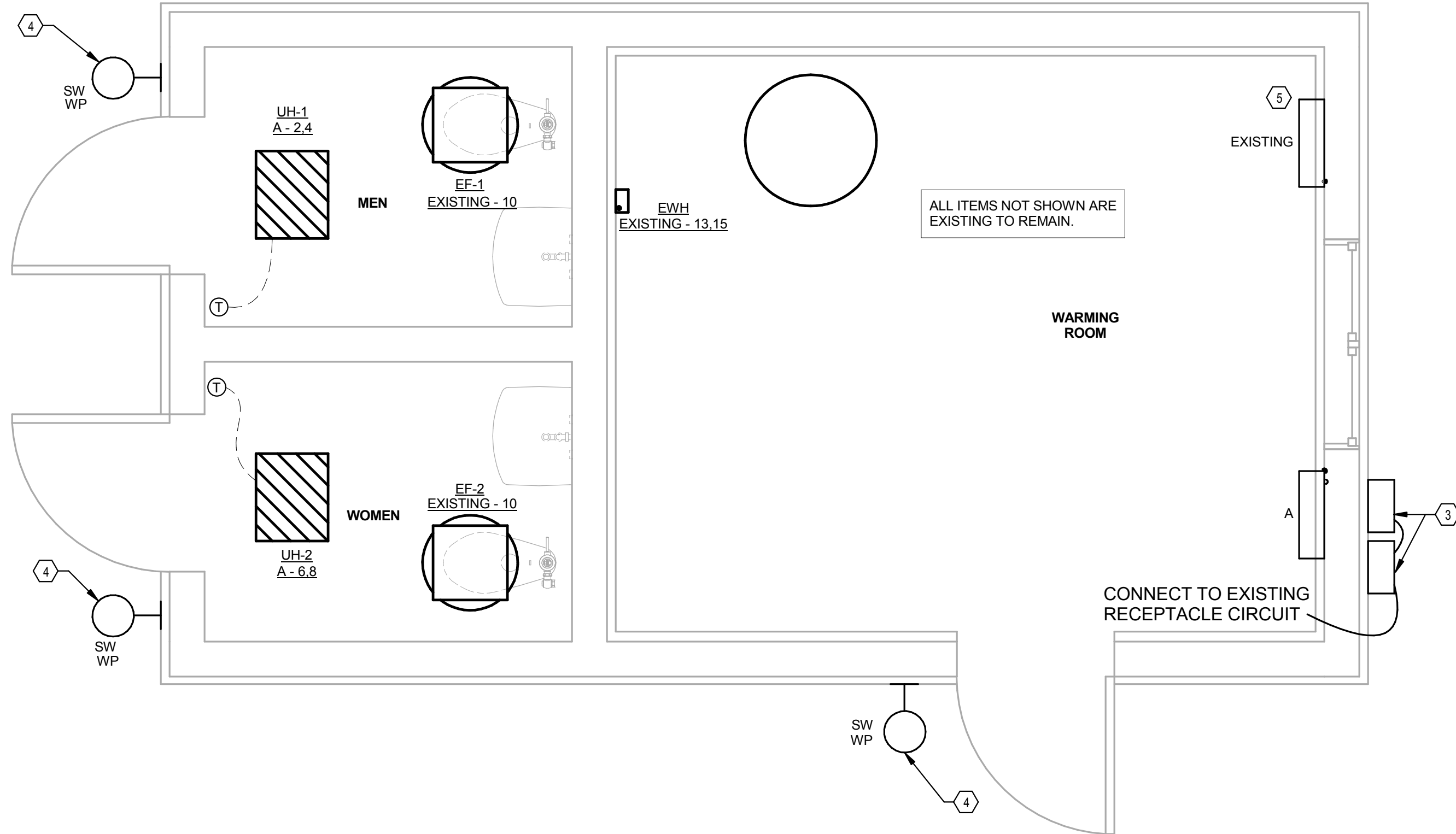
DEMO NOTES:

- CONTRACTOR TO FIELD VERIFY EXISTING CONDITIONS BEFORE BID. CONTACT ARCHITECT IF DISCREPANCIES ARISE FROM WHAT IS SHOWN ON THE PLANS. NO ALLOWANCE WILL BE MADE FOR LACK OF KNOWLEDGE OF EXISTING CONDITIONS.
- EXISTING WORK TO REMAIN EXCEPT WHERE SPECIFICALLY SHOWN OR SPECIFIED OTHERWISE.
- EXISTING LIGHTS TO BE REMOVED AND SHALL BE GIVEN BACK TO THE OWNER.
- CONTRACTOR SHALL CONFIRM REMOVAL OF ANY DEVICE THAT DOES NOT AFFECT THE OPERATION OF THE SYSTEMS IN THE AREAS TO REMAIN.
- CONTRACTOR TO COORDINATE ALL ELECTRICAL SERVICE OUTAGES WITH OWNER AT LEAST 1 WEEK AHEAD OF TIME IN WRITTEN FORMAT.

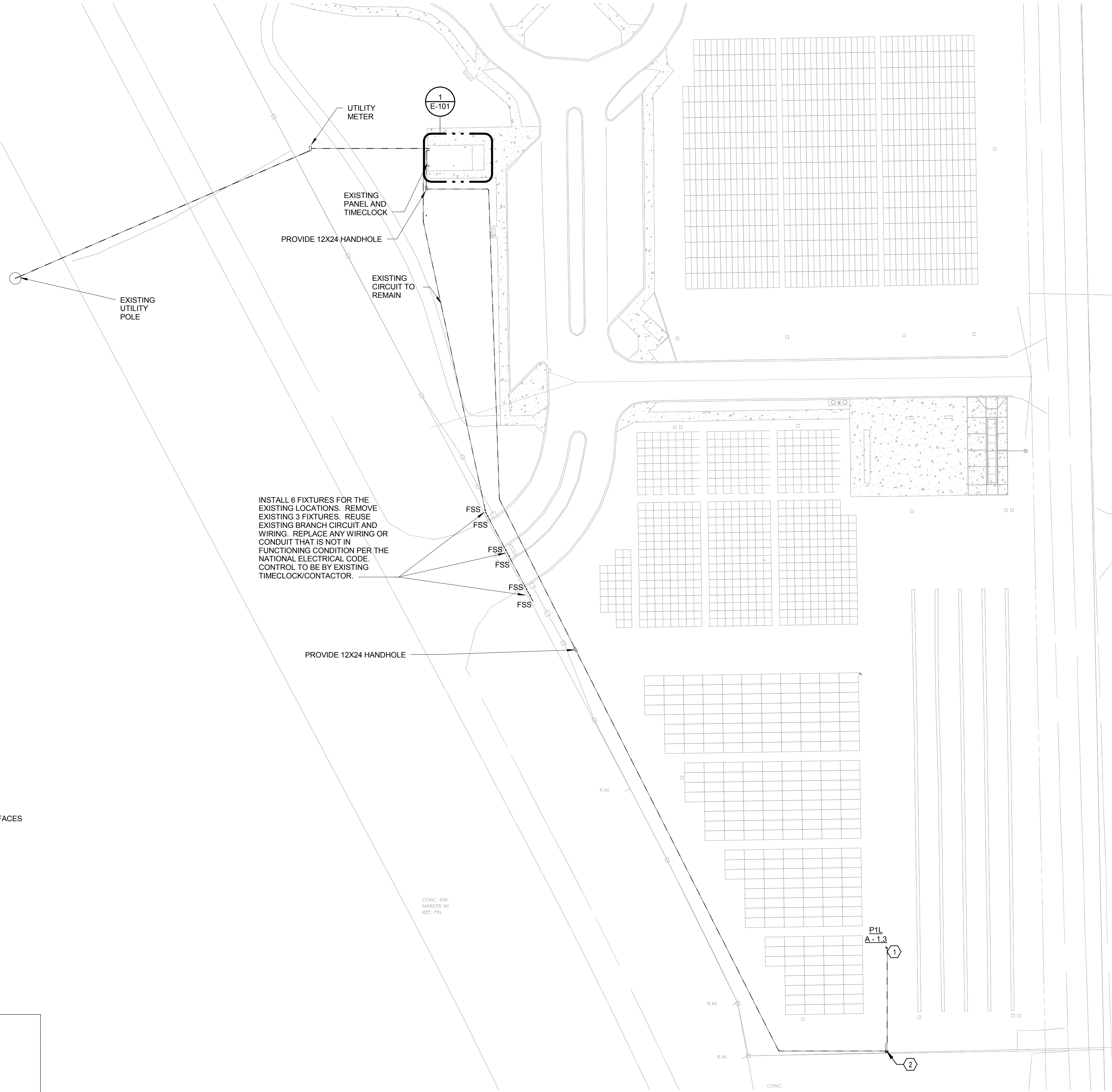


BID SET

Revisions	Date	PRIME: amec AMEC Environment & Infrastructure, INC. 1075 BIG SHANTY ROAD NW, SUITE 100 KENNESAW, GA. 30144 (770) 421-3400 AMEC PROJECT: 6151-13-0190	MEP ENGINEER: Thompson Company consulting engineers 213080 50 Technology Parkway South Norcross, Georgia 30092 www.tcleng.com Atlanta Dubai, UAE Orlando Mexico City, Mexico Houston Tortola, BVI	NATIONAL CEMETERY ADMINISTRATION	Drawing Title LEGEND, NOTES, AND ABBREVIATIONS - ELECTRICAL	Project Title YELLOWSTONE NATIONAL CEMETERY	Date 26 JUNE 2015		
					Approved: Director, Technical Support Service	Building Number	Checked BK	Drawn YD	Project No. 884CM3014
					Approved: Chief, Architectural & Engineering Division	Location 55 BUFFALO TRAIL ROAD LAUREL, MT 59044	DRAWING NO. E-001		
					Sheet 22 of 25				



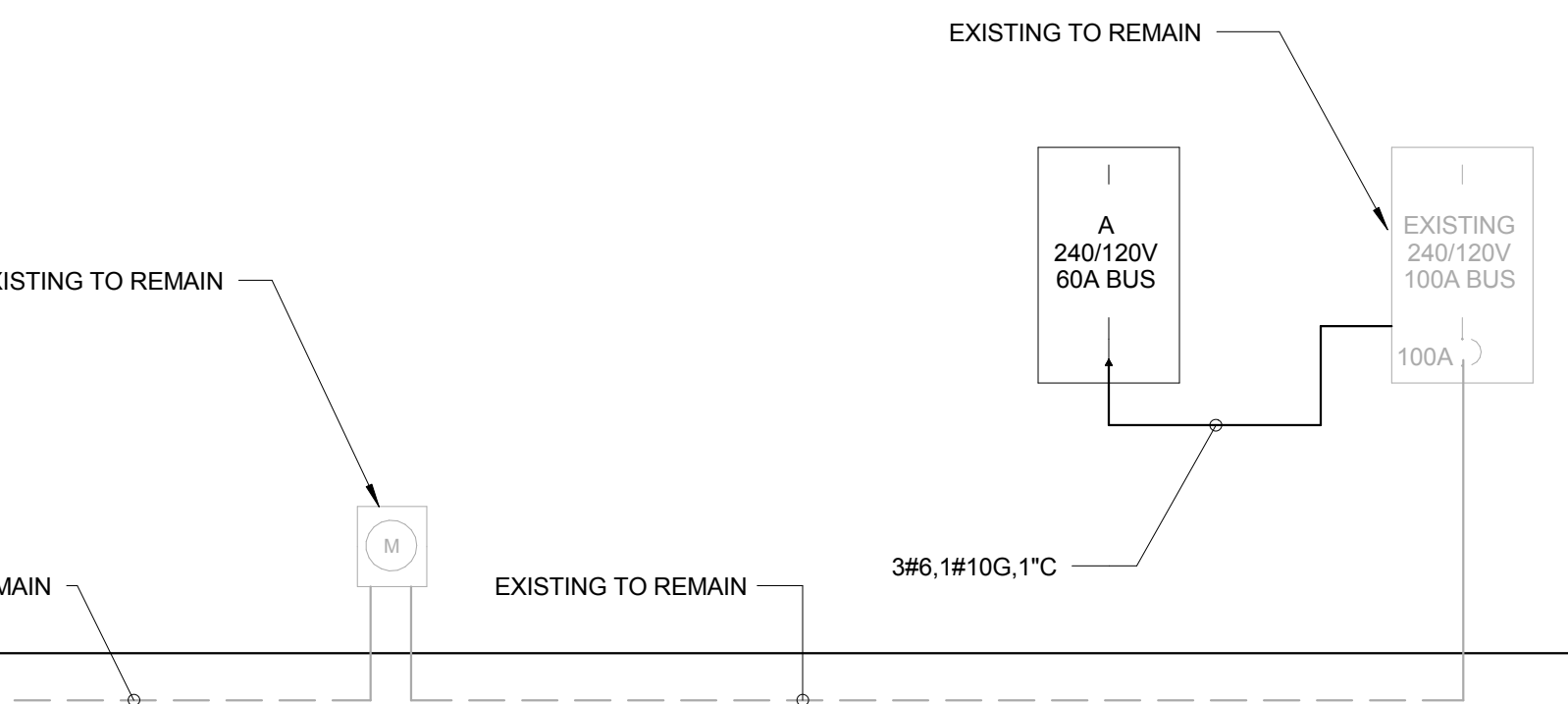
1 FLOOR PLAN - ELECTRICAL
E-101 1/2" = 1'-0"



3 SITE PLAN - ELECTRICAL
E-101 1" = 30'-0"

- KEY NOTES:**
- 1 HP WELL PUMP. COORDINATE REQUIREMENTS WITH IRRIGATION DESIGN DRAWINGS.
 - LOCATE WELL PUMP DISCONNECT AT FENCE. PROVIDE GALVANIZED METAL FRAMING C-CHANNEL FOR MOUNTING DISCONNECT.
 - CONNECT TANK FLUID LEVEL ALARM SYSTEM TO EXISTING RECEPTACLE CIRCUIT. EXTEND 2#12, 1#12G, 3#4" FROM THE NEAREST OUTLET TO CONTROLLER LOCATION.
 - REPLACE FIXTURE WITH NEW FIXTURE INDICATED. REUSE EXISTING BOX AND WIRING.
 - EXTEND 13 & 15 CIRCUITS ON EXISTING PANEL TO NEW PANEL. MATCH EXISTING CONDUCTOR AND CONDUIT SIZE. ROUTE CONCEALED.

- REPAIR NOTES:**
- ANY DAMAGE TO THE WALLS DUE TO THIS PROJECT SHALL BE REPAIRED. DAMAGED PAINT SURFACES SHALL BE REPAIRED AND REPAINTED WITH PAINT MATCHING EXISTING SURFACE. DAMAGED FIBERGLASS PANELS ARE TO BE REMOVED AND REPLACED IN THEIR ENTIRETY.
 - FOLLOWING THE MODIFICATION OF THE FLOORS REQUIRED FOR THE PLUMBING FIXTURES, THE ENTIRE FLOOR IN EACH RESTROOM SHALL BE PAINTED WITH SLIP RESISTANT EPOXY PAINT.



2 ELECTRICAL RISER DIAGRAM
E-101 N.T.S.

Branch Panel: EXISTING

Location: RESTROOM BLDG.
Supply From: A
Mounting: SEMI RECESSED
Enclosure: Type 1

Volts: 120/240 Single
Phases: 3
Wires: 3

A.I.C. Rating: 10000
Mains Type: MCB
Mains Rating: 100 A
MCB Rating: 100 A

Notes	CKT	Circuit Description	Trip	P	A	B	P	Trip	Circuit Description	CKT	Notes	
--	1	MAIN DISCONNECT	100	2	0	0	1	0	NOT USABLE	2	--	
--	3	--	--	--	--	0	0	1	0	NOT USABLE	4	--
--	5	EXISTING	20	1	900	2250	2	20	EXISTING	6	--	
--	7	EXISTING	20	1	--	180	2250	--	--	8	--	
--	9	EXISTING	20	1	540	12	1	20	EXISTING	10	--	
--	11	EXISTING	20	1	--	540	720	20	EXISTING	12	--	
--	13	EWI	25	2	2400	5814	2	60	PANEL A	14	--	
--	15	--	--	--	--	2400	5814	--	--	16	--	
Total Load:			11916 VA		11904 VA							
Total Amps:			99 A		99 A							

Load Classification	Connected Load	Estimated Demand	Panel Totals
Other	11628 VA	11628 VA	
Power	4800 VA	4800 VA	Total Conn. Load: 23820 VA
Spare	7392 VA	7392 VA	Total Est. Demand: 23820 VA
			Total Conn.: 99 A
			Total Est. Demand: 99 A

Notes Legend:
GFCI - Provide with Ground Fault Circuit Interrupt breaker.
AFCI - Provide with Arc Fault Circuit Interrupt breaker.
LK - Provide with lockable breaker.
EX - Existing circuit.

Branch Panel: A

Location: RESTROOM BLDG.
Supply From: SURFACE
Mounting: SURFACE
Enclosure: Type 1

Volts: 120/240 Single
Phases: 1
Wires: 3

A.I.C. Rating: 10,000
Mains Type: MLO
Mains Rating: 60 A

Notes	CKT	Circuit Description	Trip	P	A		B		P	Trip	Circuit Description	CKT	Notes
--	1	WELL PUMP	20	2	960	2000	960	2000	2	25	UH-1	2	--
--	3	--	--	--	--	--	--	--	--	--	--	4	--
--	5	SPARE	20	2	0	2000	0	2000	2	25	UH-2	6	--
--	7	--	--	--	--	--	0	2000	--	--	--	8	--
--	9	EXISTING	20	1	500	0	0	0	1	20	SPARE	10	--
--	11	SPARE	20	1	--	--	0	0	1	20	SPARE	12	--
--	13	EXISTING	20	1	1200	0	--	--	1	20	SPARE	14	--
--	15	SPACE	--	--	--	--	0	0	1	20	SPARE	16	--
Total Load:					8660 VA		4980 VA						
Total Amps:					56 A		41 A						

Load Classification	Connected Load	Estimated Demand	Panel Totals
Other	10420 VA	10420 VA	
Spare	1200 VA	1200 VA	Total Conn. Load: 11620 VA
			Total Est. Demand: 11620 VA
			Total Conn.: 48 A
			Total Est. Demand: 48 A

Notes Legend:
GFCI - Provide with Ground Fault Circuit breaker.
AFCI - Provide with Arc Fault Circuit Interrupt breaker.
LK - Provide with lockable breaker.
EX - Existing circuit.

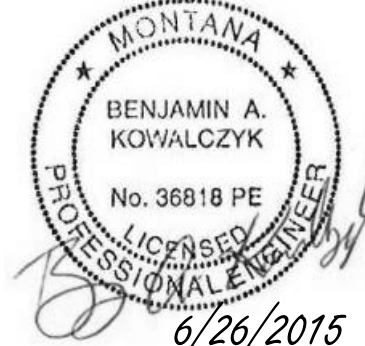
LIGHTING FIXTURE SCHEDULE						
TAG	DESCRIPTION	LAMP	WATTAGE	VOLTAGE	MOUNTING	NOTES
FSS	SMALL LED FLOODLIGHT. DARK BRONZE FINISH.	LED	40W	120 V	SURFACE	LUMENPULSE FSS40LU-NHP-GY KIM LIGHTING EL218F50-4KUV PHILIPS STONCO LYTEPRO LPF2E4KFLK1
SW	SURFACE DECORATIVE SCENCE TO REPLACE EXISTING SCENCE.	LED	30W	120 V	SURFACE	LITHONIA #WSQ LED1 PHILIPS GARDCO #108 LED

ELEC - MECHANICAL EQUIPMENT SCHEDULE											
UNIT NUMBER	UNIT DESCRIPTION	HEATER W	HP	FLA	TOTAL VA	VOLTAGE	POLES	PANEL	CIRCUIT NUMBER	CIRCUIT DESCRIPTION	DISCONNECT
UH-1	UNIT HEATER	4000 W	16.7 A	20.0 A	4800 VA	240 V	2	A	13.15	2#10, 1#10G, 3/4"	30/2/1
UH-2	UNIT HEATER	4000 W	16.7 A	20.0 A	4800 VA	240 V	2	A	13.15	2#10, 1#10G, 3/4"	30/2/1

UNIT NUMBER	UNIT DESCRIPTION	HEATER W	HP	FLA	TOTAL VA	VOLTAGE	POLES	PANEL	CIRCUIT NUMBER	CIRCUIT DESCRIPTION	DISCONNECT	STARTER	NOTES
EW1	WATER HEATER	4800 W	1	8.0 A	4800 VA	240 V	2	EXISTING	13.15	2#10, 1#10G, 3/4"	30/2/1R	W/UNIT	
P1L	WELL PUMP	0 W	1	8.0 A	1920 VA	240 V	2	A	1.3	2#10, 1#10G, 1"	30/2/3R	W/UNIT	

SCALE: 1/2" = 1'-0"
0' 5' 1' 2' 4'

SCALE: 1" = 30'-0"
0' 7.5' 15' 30' 60'



BID SET

Revisions

Date

PRIME:

AMEC Environment & Infrastructure, INC.
1075 BIG SHANTY ROAD NW, SUITE 100
KENNESAW, GA 30144
(770) 421-3400
AMEC PROJECT: 6151-13-0190

MEP ENGINEER:

Thompson Company
consulting engineers
213080
50 Technology Parkway South
Norcross, Georgia 30092
Atlanta, Georgia
Dubai, UAE
Orlando, Florida
Mexico City, Mexico
Houston, Texas
Tortola, BVI

NATIONAL CEMETERY
ADMINISTRATION

Drawing Title
SITE PLAN, SCHEDULES AND RISER - ELECTRICAL

Project Title
YELLOWSTONE
NATIONAL CEMETERY

Approved: Director, Technical Support Service

Building Number

Checked
BK

Drawn
YD

Approved: Chief, Architectural & Engineering Division

Location
55 BUFFALO TRAIL ROAD
LAUREL, MT 59044

Date
26 JUNE 2015

Project No.
884CM3014

DRAWING NO.
E-101

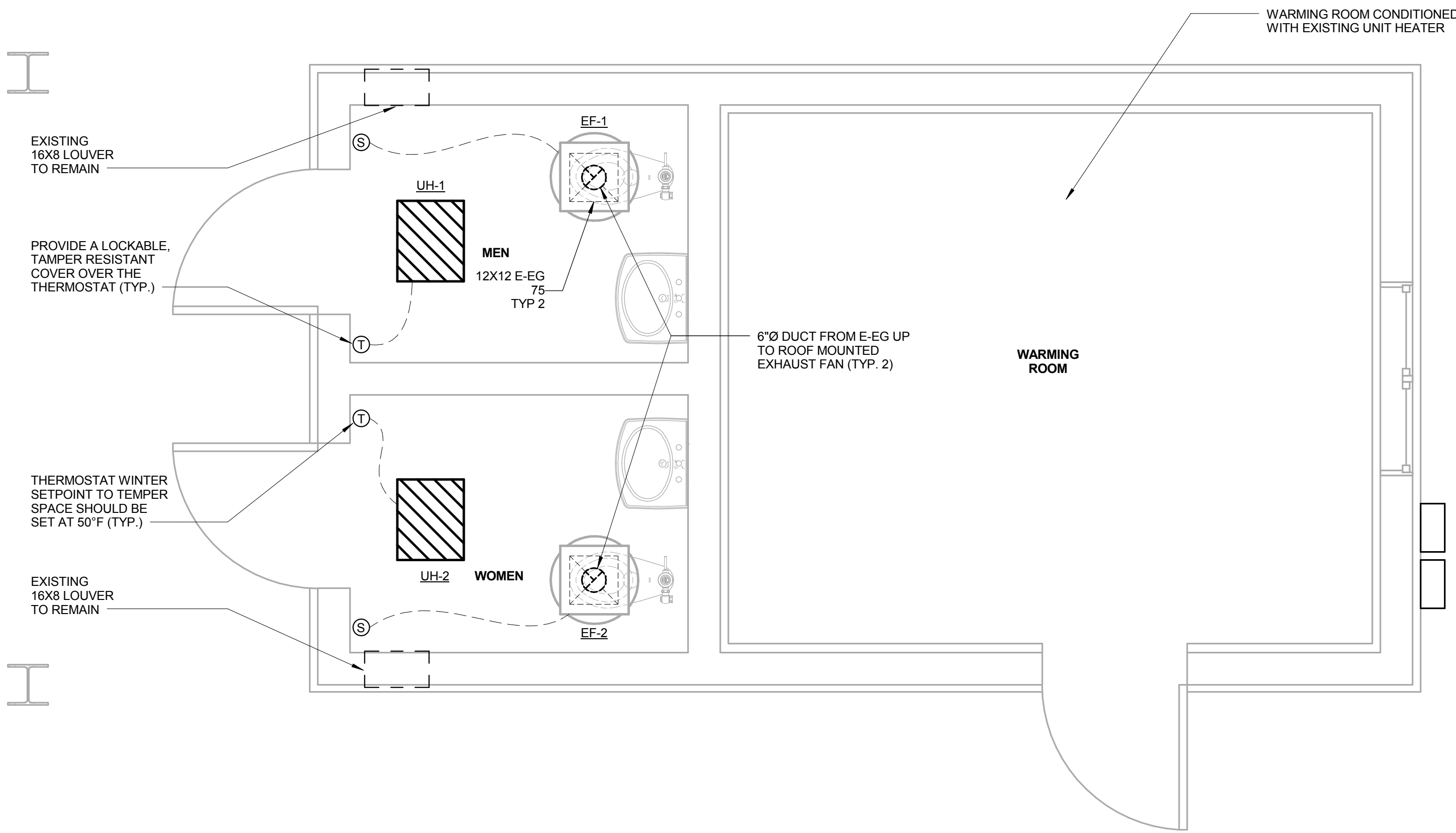
Sheet
23 of 25

GENERAL NOTES - MECHANICAL:

- EXCEPT WHERE DIMENSIONS ARE SHOWN THE DRAWINGS FOR MECHANICAL WORK, THE DRAWINGS SHALL BE DIAGRAMMATIC AND ARE INTENDED TO CONVEY SCOPE AND GENERAL ARRANGEMENT ONLY. THE DRAWINGS DO NOT SHOW EVERY FITTING AND DETAIL. ALL PIPING SYSTEMS, DUCT SYSTEMS, EQUIPMENT, MATERIALS, AND LABOR SHALL BE COMPLETE. PROVIDE ALL NECESSARY OFFSETS, CONNECTIONS, SUPPORTS, FITTINGS, DETAILS, MATERIALS, EQUIPMENT, AND LABOR TO COMPLETE THE WORK. COORDINATE ALL WORK WITH ARCHITECTURAL, STRUCTURAL, CIVIL, PLUMBING, ELECTRICAL, AND ALL OTHER WORK SHOWN ON THE CONTRACT DOCUMENT DRAWINGS. COORDINATE WORK WITH ARCHITECTURAL ELEMENTS INCLUDING AVAILABLE SPACE ABOVE EACH CEILING. ALL MATERIALS SHALL FIT THE SPACE AVAILABLE. VERIFY DIMENSIONS AND CLEARANCES AT BUILDING SITE PRIOR TO COMMENCING WORK. DRAWINGS SHALL NOT BE SCALED.
- WHEN ALL TRADE WORK IS SUBCONTRACTED, IT SHALL BE THE GENERAL CONTRACTOR'S RESPONSIBILITY TO COORDINATE HIS SUBCONTRACTORS AND THEIR ASSOCIATED CONTRACTS. WHEN DISCREPANCIES ARISE PERTAINING TO WHICH CONTRACTOR PROVIDES A PARTICULAR ITEM OF THE WORK OR WHICH CONTRACTOR PROVIDES FINAL CONNECTIONS FOR A PARTICULAR ITEM OF THE CONTRACT, IT SHALL BE BROUGHT TO THE ATTENTION OF THE GENERAL CONTRACTOR, WHOSE DECISION SHALL BE FINAL.
- THE LOCATIONS OF ALL ITEMS SHOWN ON THE DRAWINGS OR CALLED FOR IN THE SPECIFICATIONS THAT ARE NOT DEFINITELY FIXED BY DIMENSIONS ARE TO BE APPROXIMATE ONLY. THE EXACT LOCATIONS NECESSARY TO SECURE THE BEST CONDITIONS AND RESULTS MUST BE DETERMINED BY THE PROJECT SITE CONDITIONS AND SHALL HAVE THE APPROVAL OF THE ENGINEER BEFORE BEING INSTALLED. DO NOT SCALE DRAWINGS. ALL DIMENSIONAL ISSUES SHALL BE DIRECTED TO THE ARCHITECT FOR HIS RESOLUTION.
- PROVIDE MISCELLANEOUS STEEL REQUIRED TO ENSURE PROPER INSTALLATION AND AS SHOWN IN DETAILS FOR PIPING, DUCTWORK AND EQUIPMENT (UNLESS OTHERWISE NOTED).
- REFER TO ARCHITECTURAL CEILING PLANS FOR EXACT LOCATIONS OF ALL AIR DISTRIBUTION DEVICES. IF A PARTICULAR ITEM IS NOT SHOWN ON THE ARCHITECTURAL REFLECTED CEILING PLAN, PREPARE A DRAWING AND PRESENT IT TO THE ARCHITECT FOR HIS REVIEW AND/OR APPROVAL.
- REFER TO ARCHITECTURAL DRAWING FOR EXACT SIZE, LOCATION AND MOUNTING HEIGHT OF ALL LOUVERS AND/OR EXTERIOR WALL MOUNTED DEVICES.
- COORDINATE THE EXACT LOCATION AND SIZE OF ALL ROOF PENETRATIONS WITH THE ARCHITECT PRIOR TO ANY OPENING BEING PLACED.
- MAINTAIN DUCTWORK LEVEL AND AS HIGH AS POSSIBLE UNLESS NOTED OTHERWISE. TRANSITION RECTANGULAR DUCTWORK ON THE BOTTOM AND THE SIDES. ALL DUCT TRANSITIONS FROM SQUARE TO ROUND SHALL BE SMOOTH SQUARE TO ROUND TRANSITIONS.
- DUCT SIZES ARE SHOWN AS INSIDE CLEAR DIMENSIONS. WHERE INTERNAL INSULATION IS CALLED FOR, DIMENSIONS SHALL BE INCREASED BY THE THICKNESS OF THE INSULATION.
- CONTRACTOR SHALL COORDINATE VOLTAGE AND PHASE OF EACH PIECE OF EQUIPMENT WITH THE ELECTRICAL CONTRACTOR AND ALL ELECTRICAL CONTRACT DOCUMENTS PRIOR TO ORDERING.
- ALL WIRING IN THE CEILING PLENUM SHALL BE PLENUM RATED CABLE PER NFPA-70 OR BE INSTALLED IN CONDUIT. ALL CONTROL WIRE AND CONDUIT SHALL COMPLY WITH THE NATIONAL ELECTRIC CODE AND THE ELECTRICAL DIVISION OF THE CONTRACT SPECIFICATION.
- ALL TOILET EXHAUST DUCTWORK SHALL HAVE WATERTIGHT JOINTS. HORIZONTAL DUCTWORK SHALL BE SLOPED DOWN 1/8" PER FOOT TOWARDS GRILLE.
- ALL LOUVERS AND DUCTS OPEN ON END SHALL BE COVERED WITH 1/2" WIRE MESH BIRDSCREEN OR ACCEPTABLE EQUIVALENT EXCEPT DRYER EXHAUST LOUVER.
- VIBRATION ISOLATION FOR ALL EQUIPMENT SHALL BE PROVIDED TO PREVENT TRANSMISSION OF VIBRATION TO BUILDING STRUCTURE.
- ANY TESTING, ADJUSTING AND BALANCING AGENCY CONSIDERED FOR THE PROJECT SHALL BE A MEMBER OF THE ASSOCIATED BALANCE COUNCIL (AABC) OR THE NATIONAL ENVIRONMENTAL BALANCING BUREAU (NEBB). TESTING, ADJUSTING, AND BALANCING SHALL BE PERFORMED IN ACCORDANCE WITH THE AABC STANDARDS.
- CONTRACTOR SHALL COORDINATE ALL EQUIPMENT CONNECTIONS WITH MANUFACTURERS' CERTIFIED DRAWINGS. THEY SHALL COORDINATE AND PROVIDE ALL DUCT TRANSITIONS REQUIRED FOR FINAL EQUIPMENT CONNECTIONS TO FURNISHED EQUIPMENT. FIELD VERIFY AND COORDINATE ALL DUCT AND PIPING DIMENSIONS BEFORE FABRICATION.
- ALL DUCTWORK AND EQUIPMENT SHALL BE SUPPORTED FROM THE SURROUNDING STRUCTURAL ELEMENTS AND COORDINATED THROUGH THE GENERAL CONTRACTOR. ANY ATTACHMENT TO TRUSSES OR JOIST GIRDERS SHALL BE AT PANEL POINTS.
- EQUIPMENT, DUCTWORK AND PIPING SHALL NOT BE PERMITTED TO BE SUPPORTED FROM ANY METAL DECK.
- ALL LOCATIONS AND SIZES OF ALL FLOOR, WALL AND ROOF OPENINGS SHALL BE COORDINATED WITH ALL OTHER TRADES. ALL OPENINGS IN FIRE WALLS DUE TO DUCTWORK, PIPING OR CONDUIT SHALL BE FIRE STOPPED WITH A PRODUCT SIMILAR TO 3M, HILTI OR APPROVED EQUAL.
- REFER TO THE SPECIFICATION BOOK, INCLUDING THE DIVISION 23 SPECIFICATIONS.

HVAC/SHEET METAL

- CERTAIN ITEMS SUCH AS RISES AND DROPS IN DUCTWORK, ACCESS DOORS AND VOLUME DAMPERS ARE INDICATED ON THE CONTRACT DOCUMENT DRAWINGS FOR CLARITY FOR A SPECIFIC LOCATION REQUIREMENT AND SHALL NOT BE INTERPRETED AS THE EXTENT OF THE REQUIREMENTS FOR THESE ITEMS.
- PROVIDE ANY 90 DEGREE SQUARE ELBOWS WITH DOUBLE RADIUS TURNING VANES UNLESS OTHERWISE INDICATED. PROVIDE ACCESS DOORS UPSTREAM OF ALL ELBOWS WITH TURNING VANES.
- UNLESS OTHERWISE NOTED, ALL DUCTWORK IS OVERHEAD, AS CLOSE TO THE UNDERSIDE OF THE STRUCTURE, CONSIDERING PIPING IS ABOVE WITH SPACE FOR INSULATION IF REQUIRED.
- PROVIDE ACCESS DOORS IN DUCTWORK FOR OPERATION, ADJUSTMENT, AND MAINTENANCE OF ALL FANS, VALVES, AND MECHANICAL EQUIPMENT.
- EACH SHEET METAL PLENUM AT EACH WALL LOUVER SHALL BE FULL SIZE OF THE LOUVER.



1 FLOOR PLAN - MECHANICAL
M-101 1/2" = 1'-0"

REPAIR NOTES:

- ANY DAMAGE TO THE WALLS DUE TO THIS PROJECT SHALL BE REPAIRED. DAMAGED PAINT SURFACES SHALL BE REPAIRED AND REPAINTED WITH PAINT MATCHING EXISTING SURFACE. DAMAGED FIBERGLASS PANELS ARE TO BE REMOVED AND REPLACED IN THEIR ENTIRETY.
- FOLLOWING THE MODIFICATION OF THE FLOORS REQUIRED FOR THE PLUMBING FIXTURES, THE ENTIRE FLOOR IN EACH RESTROOM SHALL BE PAINTED WITH SLIP RESISTANT EPOXY PAINT.

UNIT HEATER SCHEDULE (ELECTRIC)					
MARK	LOCATION	TYPE	KW	NOTES	
UH-1	MEN'S RESTROOM	SURFACE MOUNTED	4	ALL	
UH-2	WOMEN'S RESTROOM	SURFACE MOUNTED	4	ALL	

UNIT HEATER SCHEDULE (ELECTRIC) NOTES:
1. OMARK IS THE BASIS OF DESIGN.
2. PROVIDE WALL-MOUNTED T-STAT.

EXHAUST FAN SCHEDULE										
MARK	AREA SERVED	TYPE	CFM	ESP (IN. WG)	MOTOR (HP)	FAN RPM	DRIVE TYPE	MAX SONES	NOTES	CONTROL
EF-1	EXISTING	ROOF MOUNTED CENTRIFUGAL DOWNBLAST	75	0.1	1/100	1253	DIRECT	2.2	ALL	INTERLOCK WITH LIGHTS
EF-2	EXISTING	ROOF MOUNTED CENTRIFUGAL DOWNBLAST	75	0.1	1/100	1253	DIRECT	2.2	ALL	INTERLOCK WITH LIGHTS

EXHAUST FAN SCHEDULE NOTES:
1. BROWN IS THE BASIS OF DESIGN.
2. PROVIDE GRAVITY BACKDRAFT DAMPER.
3. PROVIDE DISCONNECT SWITCH AND INTERNAL CONDUIT.
4. PROVIDE SOLID STATE SPEED CONTROLLER.
5. TERMINATE WITH ROOF CAP.

AIR DISTRIBUTION SCHEDULE				
MARK	DESCRIPTION	LAYOUT BASIS	MATERIAL	NC RATING
E-EG	EXHAUST GRILLE	TITUS MODEL 50F OR EQUIVALENT EXHAUST GRILLE 12" X 12" X 1/2" ALUM. CUBE CORE, FRAME TYPE 1 WITH SCREW HOLES FOR SURFACE MOUNT. FACTORY WHITE FINISH. REFER TO DWGS FOR ACTUAL SIZE.	ALUMINUM	25

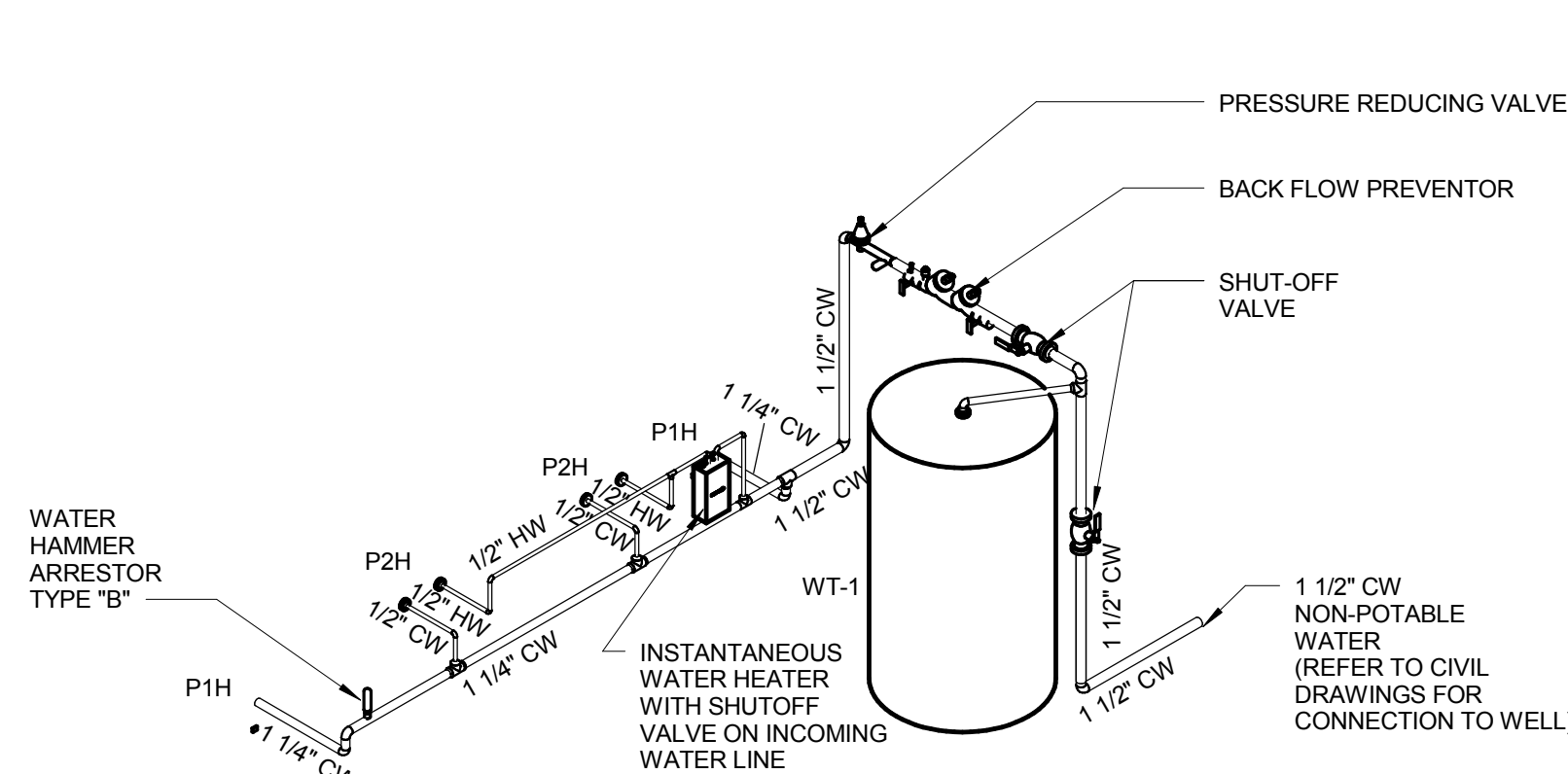
AIR DISTRIBUTION NOTES:
1. ACUTHERM, ANEMOSTAT, CARNES, HART & COOLEY, METALAIR, NAILOR, PRICE, TITUS, AND TUTTLE & BAILEY SHALL BE ACCEPTABLE MANUFACTURERS.
2. THE BLADES AT EACH RETURN GRILLE SHALL BE PARALLEL WITH THE FLOOR.
3. PROVIDE MANUFACTURER RECOMMENDED MOUNTING FOR EACH CEILING TYPE. REFER TO ARCHITECT'S RCP FOR EACH CEILING TYPE.
4. PROVIDE A FACE OPERATED NECK MOUNTED BALANCING DAMPER FOR EACH DIFFUSER AND GRILLE WITHIN AN UNACCESSIBLE CEILING UNLESS OTHERWISE NOTED.

SCALE: 1/2" = 1'-0"
0' 5' 1' 2' 4'

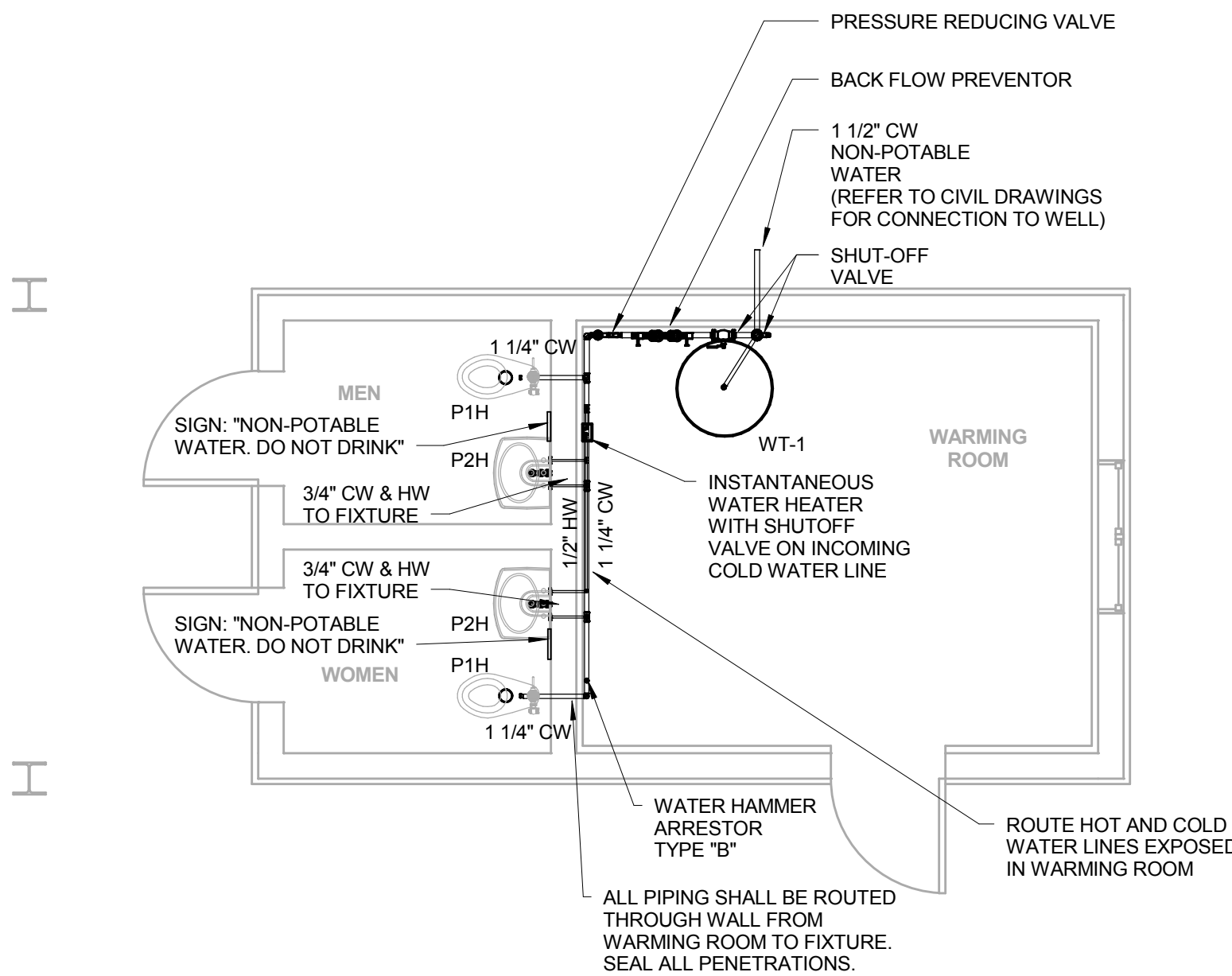


BID SET

Revisions	Date	PRIME: amec AMEC Environment & Infrastructure, INC. 1075 BIG SHANTY ROAD NW, SUITE 100 KENNESAW, GA. 30144 (770) 421-3400 AMEC PROJECT: 6151-13-0190	MEP ENGINEER: Thompson Company consulting engineers 213080 50 Technology Parkway South Norcross, Georgia 30092 www.tcleng.com Atlanta, Orlando, Houston, Dubai, Mexico City, Mexico, Tortola, BVI	NATIONAL CEMETERY ADMINISTRATION	Drawing Title FLOOR PLAN - MECHANICAL	Project Title YELLOWSTONE NATIONAL CEMETERY	Date 26 JUNE 2015		
					Approved: Director, Technical Support Service	Building Number	Checked BE	Drawn TB	Project No. 884CM3014
					Approved: Chief, Architectural & Engineering Division	Location 55 BUFFALO TRAIL ROAD LAUREL, MT 59044	DRAWING NO. M-101		
					Sheet 24 of 25				



3 ISOMETRIC - DOMESTIC WATER - PLUMBING
P-101



1 FLOOR PLAN - DOMESTIC WATER - PLUMBING
P-101 1/4" = 1'-0"

DEMO NOTES - PLUMBING:

1. REMOVE EXISTING WATER CLOSET AND DISPOSE.

GENERAL NOTES - PLUMBING:

1. THESE DRAWINGS ARE SCHEMATIC IN NATURE AND ARE NOT INTENDED TO SHOW ALL POSSIBLE CONDITIONS. IT IS INTENDED THAT A COMPLETE PLUMBING SYSTEM BE PROVIDED WITH ALL NECESSARY EQUIPMENT, APPURTENANCES AND CONTROLS COMPLETELY CO-ORDINATED WITH ALL DISCIPLINES. ALL PARAMETERS GIVEN IN THESE DOCUMENTS SHALL BE STRICTLY CONFORMED TO. ANY ITEMS AND LABOR REQUIRED FOR A COMPLETE PLUMBING SYSTEM IN ACCORDANCE WITH ALL APPLICABLE CODES, STANDARDS, LOCAL AUTHORITIES AND THESE CONTRACT DOCUMENTS SHALL BE FURNISHED WITHOUT INCURRING ANY ADDITIONAL COST TO THE OWNER. CAREFULLY REVIEW ALL CONTRACT DOCUMENTS AND THE DESIGN OF OTHER TRADES BEFORE PREPARING SHOP DRAWINGS.
2. COORDINATE ALL WORK WITH ARCHITECTURAL, STRUCTURAL, MECHANICAL, FIRE PROTECTION, AND ELECTRICAL TRADES. PIPE ROUTING SHOWN IS DIAGRAMMATIC. PROVIDE ALL OFFSETS, FITTINGS AND HANGERS TO AVOID INTERFERENCES WITH EQUIPMENT, PIPING, DUCT WORK, LIGHTS, CONDUIT, STRUCTURAL MEMBERS, AND ALL OTHER BUILDING COMPONENTS.
3. COORDINATE ALL FLOOR PENETRATIONS WITH STRUCTURAL DRAWINGS. SET SLEEVES IN FLOORS AND WALLS AND ATTACHMENTS FOR HANGERS AS CONSTRUCTION PROGRESSES. COORDINATE THE EXACT SIZE AND LOCATION OF ALL SLEEVES WITH STRUCTURAL ENGINEER. ALL PENETRATIONS MUST BE SEALED AND HELD AS TIGHT TO COLUMNS OR WALLS AS POSSIBLE.
4. COORDINATE LOCATION OF ALL EQUIPMENT WITH VA BEFORE INSTALLING. PLUMBING EQUIPMENT SHALL BE LOCATED SO THAT IT IS NOT VISIBLE TO PUBLIC VIEW. ALL VALVES AND ACCESSORIES SHALL BE LOCATED WITHIN 12" OF POINT OF ACCESS THROUGH WALLS. NO ACCESS PANELS OR PIPING IN WALLS.
5. ALL DRAINAGE PIPING AND POTABLE WATER PIPING SHALL BE LOCATED ON BACK OFFICE WALL WITH PENETRATIONS THROUGH WALL TO FIXTURES. NO PIPING SHALL BE ROUTED ON WALL OF RESTROOM.
6. ALL DRAINAGE PIPING AND POTABLE WATER PIPING SHALL SLOPE AT 1/8 INCH PER FOOT UNLESS OTHERWISE NOTED.
7. CONTRACTOR SHALL MAKE FINAL CONNECTION TO ALL DOMESTIC WATER, SANITARY SEWERS, STORM DRAINS, AND GAS SERVICES AT APPROXIMATELY 5'-0" FROM BUILDING STRUCTURE UNLESS OTHERWISE NOTED.
8. COORDINATE ALL UNDERGROUND PIPING WITH GRADE BEAMS, WALL FOOTINGS, COLUMN FOUNDATIONS AND OTHER STRUCTURAL CONDITIONS.
9. REFER TO ARCHITECTURAL PLANS AND ELEVATIONS FOR LOCATION OF ALL PLUMBING FIXTURES. EXACT LOCATION OF ALL PLUMBING FIXTURES MUST BE VERIFIED IN FIELD PRIOR TO INSTALLATION. FINAL LOCATION SHALL BE AS DIRECTED BY VA TECHNICAL REPRESENTATIVE.
10. PLUMBING CONTRACTOR SHALL MAKE FINAL CONNECTION TO ALL EQUIPMENT INDICATED ON DRAWINGS. FINAL CONNECTION SHALL INCLUDE ANY ADAPTERS, NIPPLES, SHUTOFF VALVES, PRESSURE REGULATING VALVES, WATER HAMMER ARRESTORS, BACKFLOW PREVENTION DEVICES AND ALL OTHER ACCESSORIES.
11. ALL STRUCTURAL PENETRATIONS, SLEEVES, BLOCKOUTS AND ANCHORS ARE TO BE LOCATED AND COORDINATED IN THE FIELD BY THE CONTRACTOR IN RELATION TO THE REQUIREMENTS OF FINAL EQUIPMENT AND FIXTURES SELECTED.
12. SEE DETAIL #4 ON DRAWING C-505 FOR WATER CLOSET MOUNTING.

REPAIR NOTES:

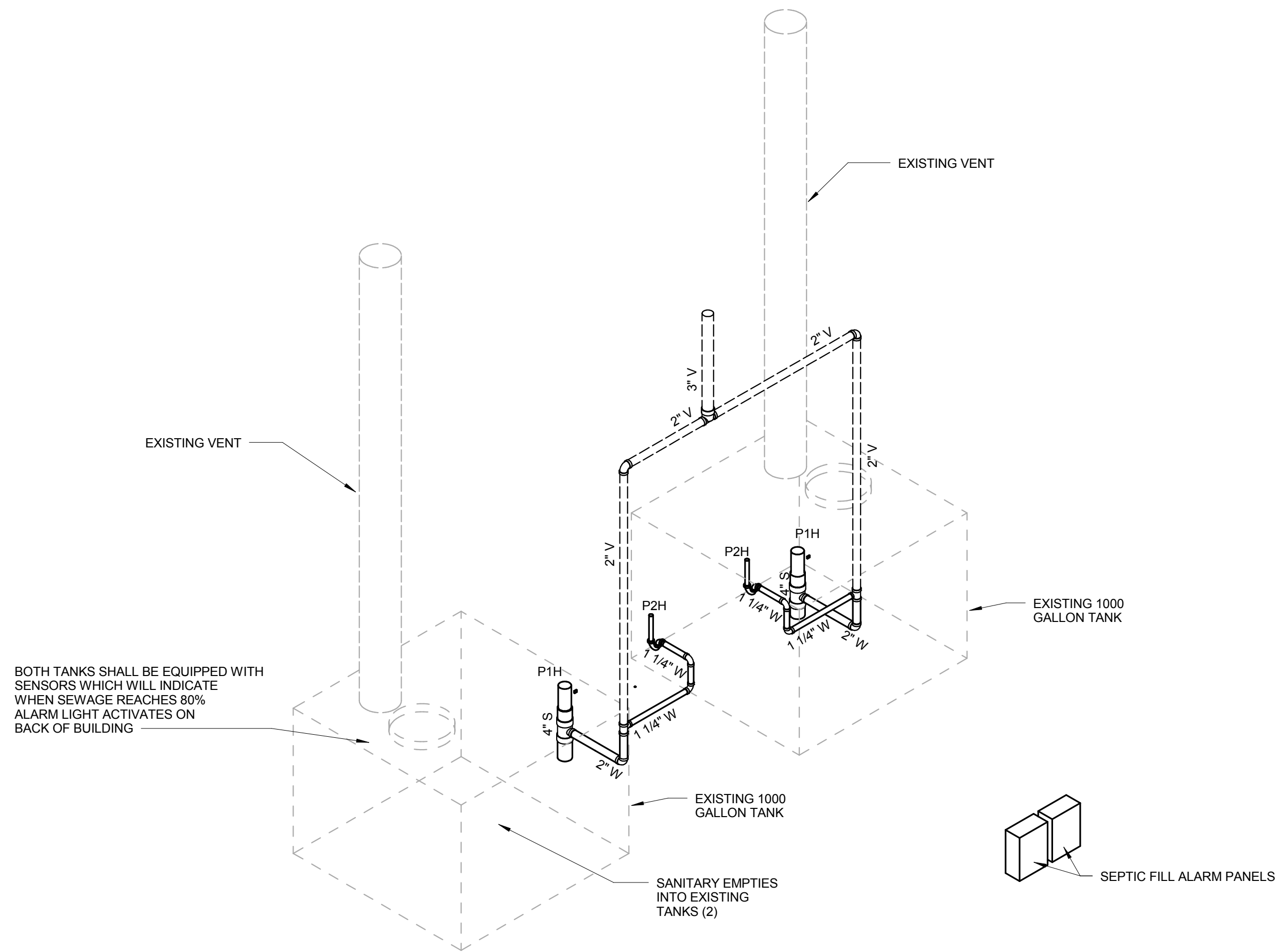
1. ANY DAMAGE TO THE WALLS DUE TO THIS PROJECT SHALL BE REPAIRED. DAMAGED PAINT SURFACES SHALL BE REPAIRED AND REPAINTED WITH PAINT MATCHING EXISTING SURFACE. DAMAGED FIBERGLASS PANELS ARE TO BE REMOVED AND REPLACED IN THEIR ENTIRETY.
2. FOLLOWING THE MODIFICATION OF THE FLOORS REQUIRED FOR THE PLUMBING FIXTURES, THE ENTIRE FLOOR IN EACH RESTROOM SHALL BE PAINTED WITH SLIP RESISTANT EPOXY PAINT.

WATER HEATER SCHEDULE							
EQUIP. NO.	QUANTITY	LOCATION	MIN. STOR. CAP.	TURN-ON (GPM)	TEMP RISE (DEGREES F) AT TURN-ON GPM	ELECTRICAL KW	REMARKS
IWH	1	RESTROOMS	N/A	0.5	64	4.8	EEMAX INSTANTANEOUS ELECTRIC, MODEL EX48

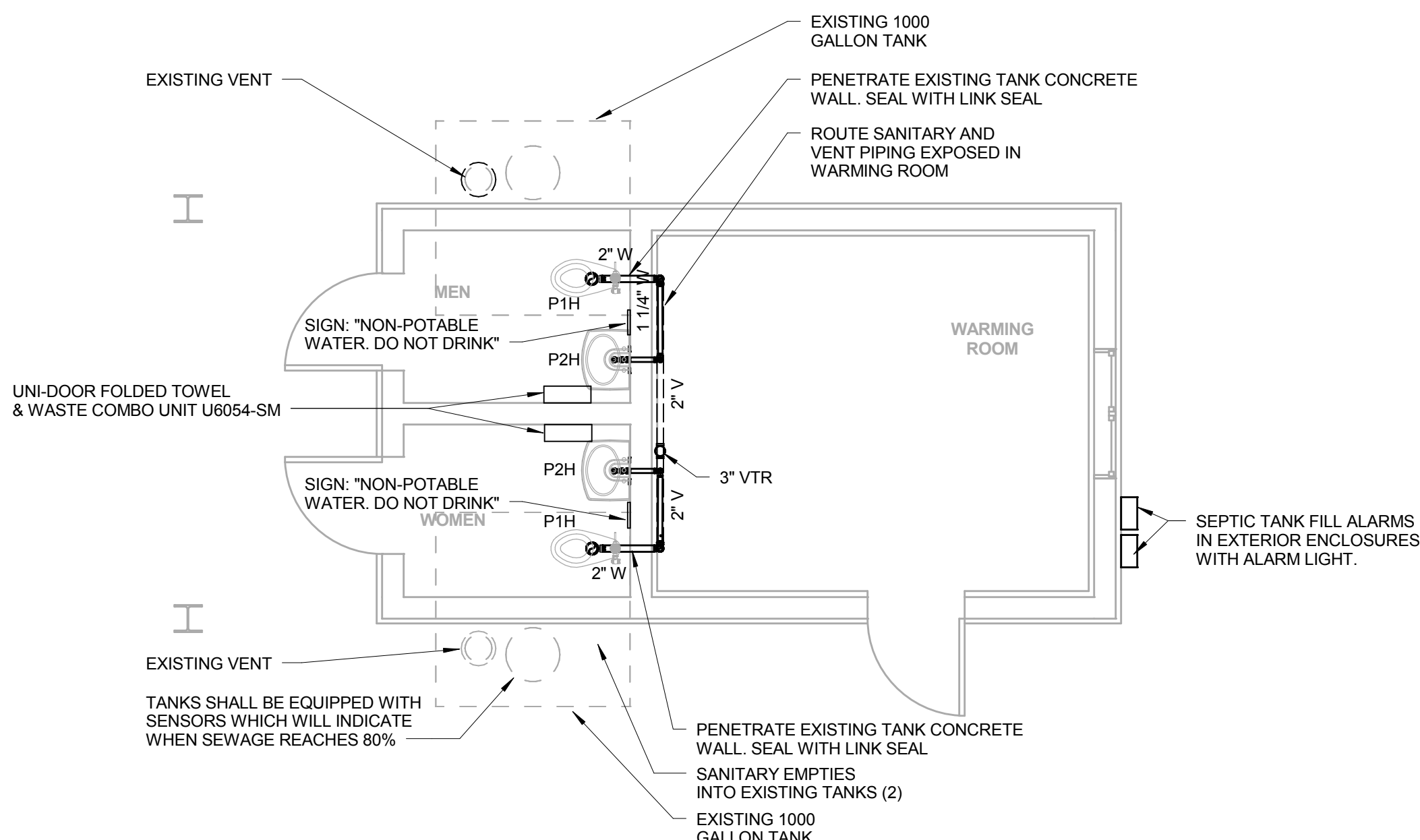
PLUMBING FIXTURE CONNECTION SCHEDULE							
ITEM. NO.	QUANTITY	DESCRIPTION	MIN. CONNECTION SIZE				REMARKS
			WASTE	VENT	CW	HW	
P1H	2	FLOOR MOUNTED WATER CLOSET-ADA	4"	2"	1 1/4"	--	FLUSH VALVE
P2H	2	WALL MOUNTED LAVATORY-ADA	1 1/4"	--	1/2"	1/2"	

WELL TANK SCHEDULE						
ITEM. NO.	QUANTITY	DESCRIPTION	VOLUME (GAL)	HEIGHT	DIA.	REMARKS
WT-1	1	PRE-CHARGED WELL TANK	32	4' 6"	16"	

SEPTIC FILL ALARM:
NEMA 250, TYPE 4X, WALL-MOUNTED CONTROL
ROD-MOUNTED, NEMA 250, TYPE 6 ENCLOSURE WITH MECHANICAL-FLOAT, MERCURY-FLOAT, OR
PRESSURE SWITCH MATCHING CONTROL, 120-V AC, WITH TRANSFORMER, VISUAL ALARM, AND
CONTACTS FOR REMOTE ALARM BELL.
PROVIDE WEATHERPROOF REMOTE ALARM BELL.
PROVIDE ADDITIONAL CABLE FOR FLOAT SWITCH TO CONTROL.



4 ISOMETRIC - SANITARY WASTE/VENT - PLUMBING
P-101



2 FLOOR PLAN - SANITARY WASTE/VENT - PLUMBING
P-101 1/4" = 1'-0"

SCALE: 1/4" = 1'-0"
0' 1' 2' 4' 8'



BID SET