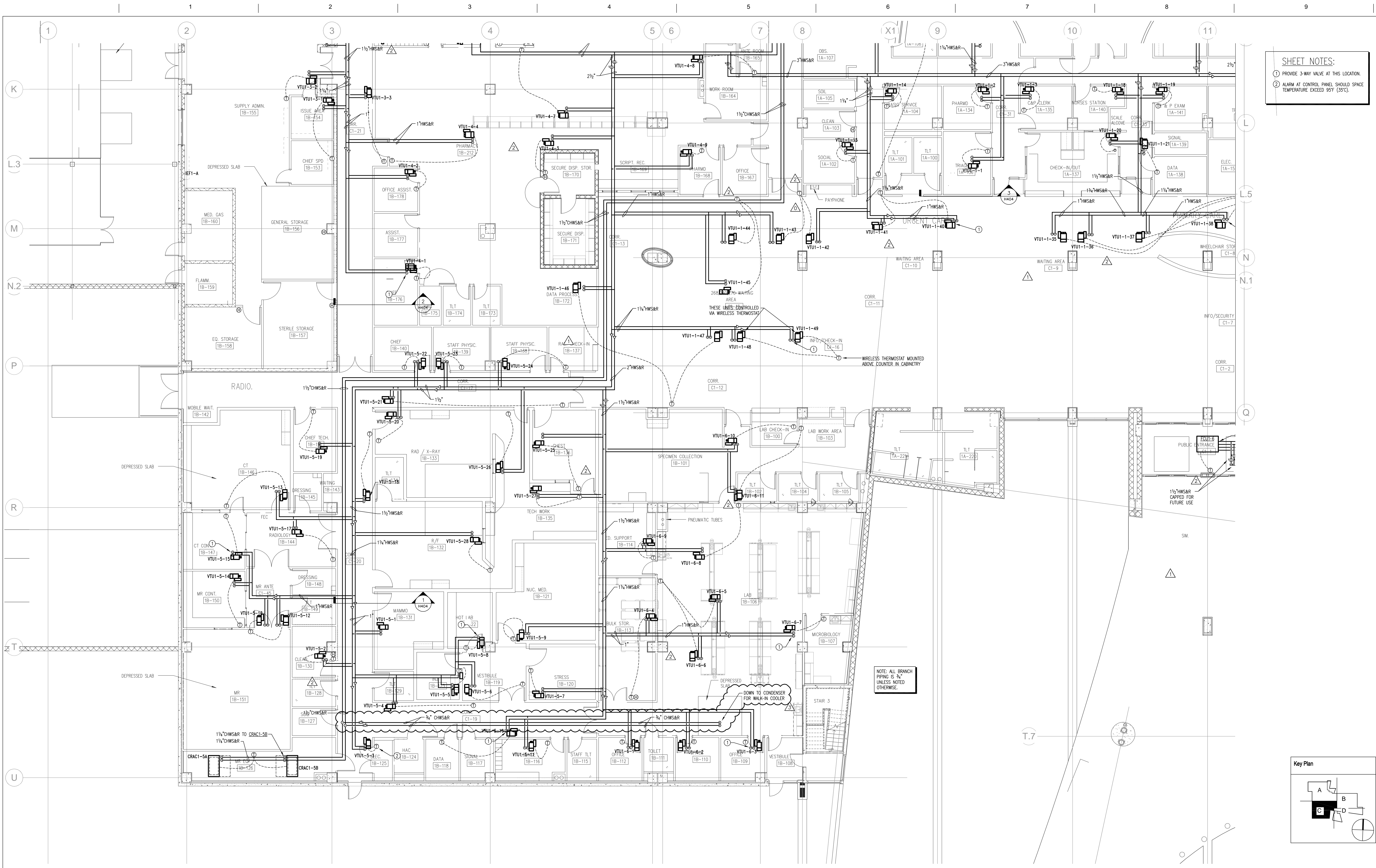


L:\2008-Jobs\108302-VA Ft. Myers Outpatient Clinic\CAD-MEP\Sheets HP101-C.dwg 4/19/2011 4:49:56 PM PLO1-17

three inches = one foot
one and one half inches = one foot
one inch = one foot
three quarters inch = one foot
one half inch = one foot
three eighths inch = one foot
one quarter inch = one foot
one eighth inch = one foot



SHEET NOTES:
① PROVIDE 3-WAY VALVE AT THIS LOCATION.
② ALARM AT CONTROL PANEL SHOULD SPACE TEMPERATURE EXCEED 95°F (35°C).

PARTIAL PLAN LEVEL 1 AREA C - HVAC PIPING
1/8" = 1'-0"

Revisions 1. ADDENDUM 05 2. ASI 076 3. ASI 135	Date 08-25-2009 11-03-2010 03-29-2011	CONSULTANTS 255 S. Orange Avenue Suite 1800 Orlando, Florida 32801 Phone: 407-841-9060 Fax: 407-943-5445 www.tlc-engineers.com © Copyright 2008 TLC Engineering for Architecture, Inc. EB #0000015 TLC NO:108302	ARCHITECT/ ENGINEERS: HELLMUTH, OBATA & KASSABAUM, INC. Eric S. Cepull, P.E. Florida License #64750 Seal	Drawing Title: PARTIAL FLOOR PLAN LEVEL 1 AREA C - HVAC PIPING Approved: Checker	Project Title Lee County Outpatient Clinic Client Location Cape Coral, Florida Date 06/15/09 Checked: DCB Drawn ESC	Project Number 516CA2400 Building Number Drawing Number: HP101-C	Office of Construction and Facilities Management
--	---	---	---	---	---	---	---