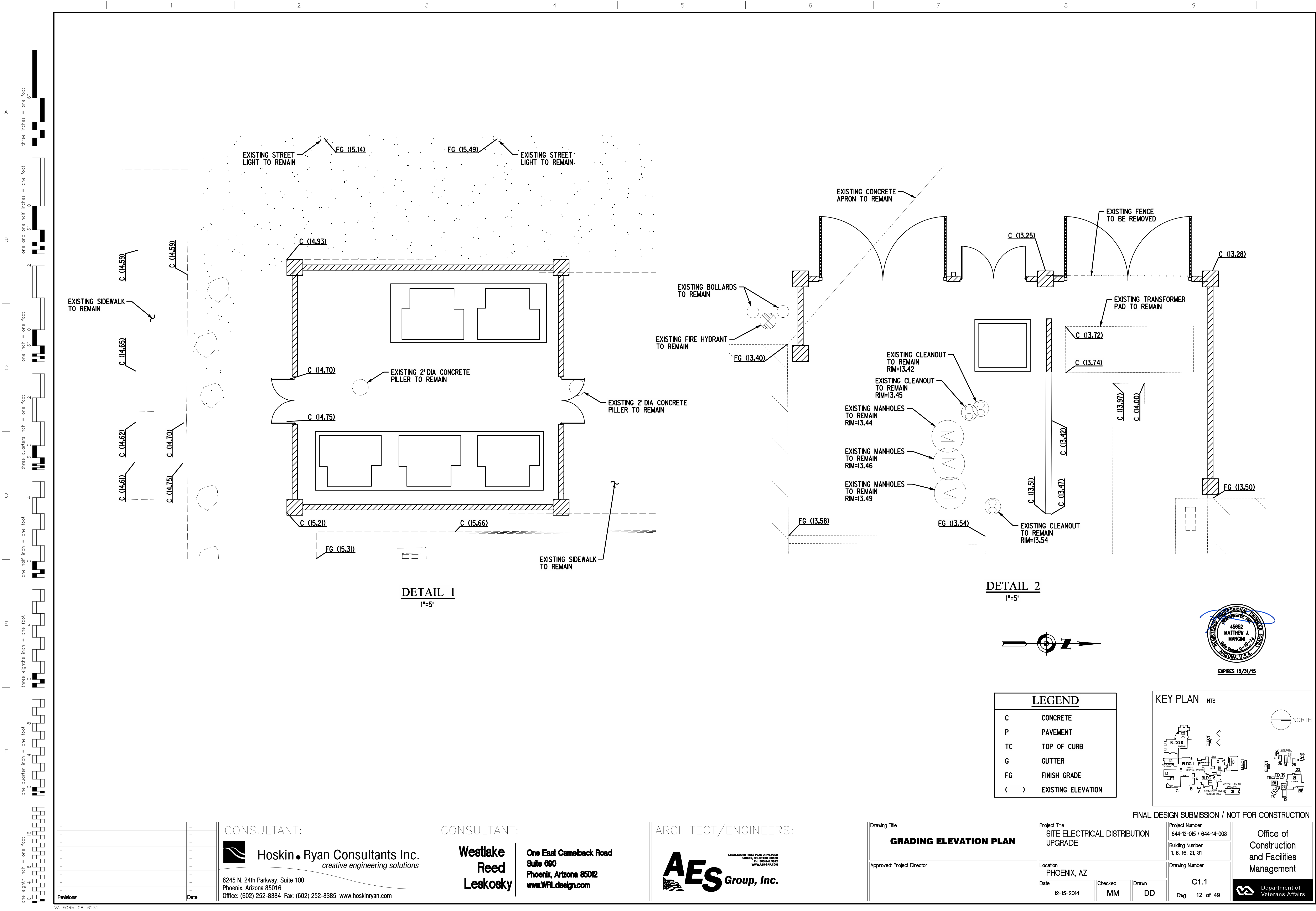
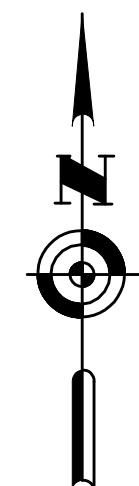
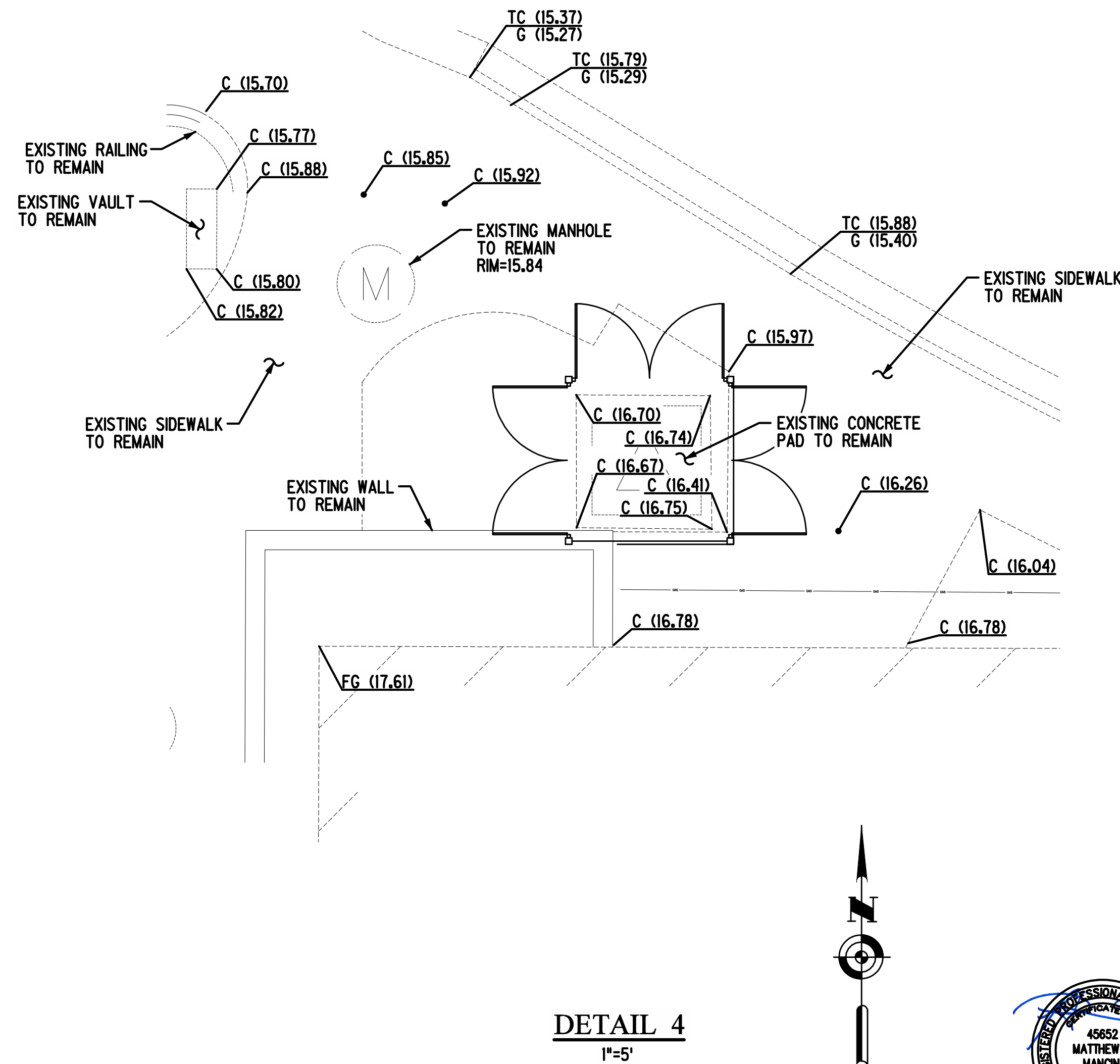
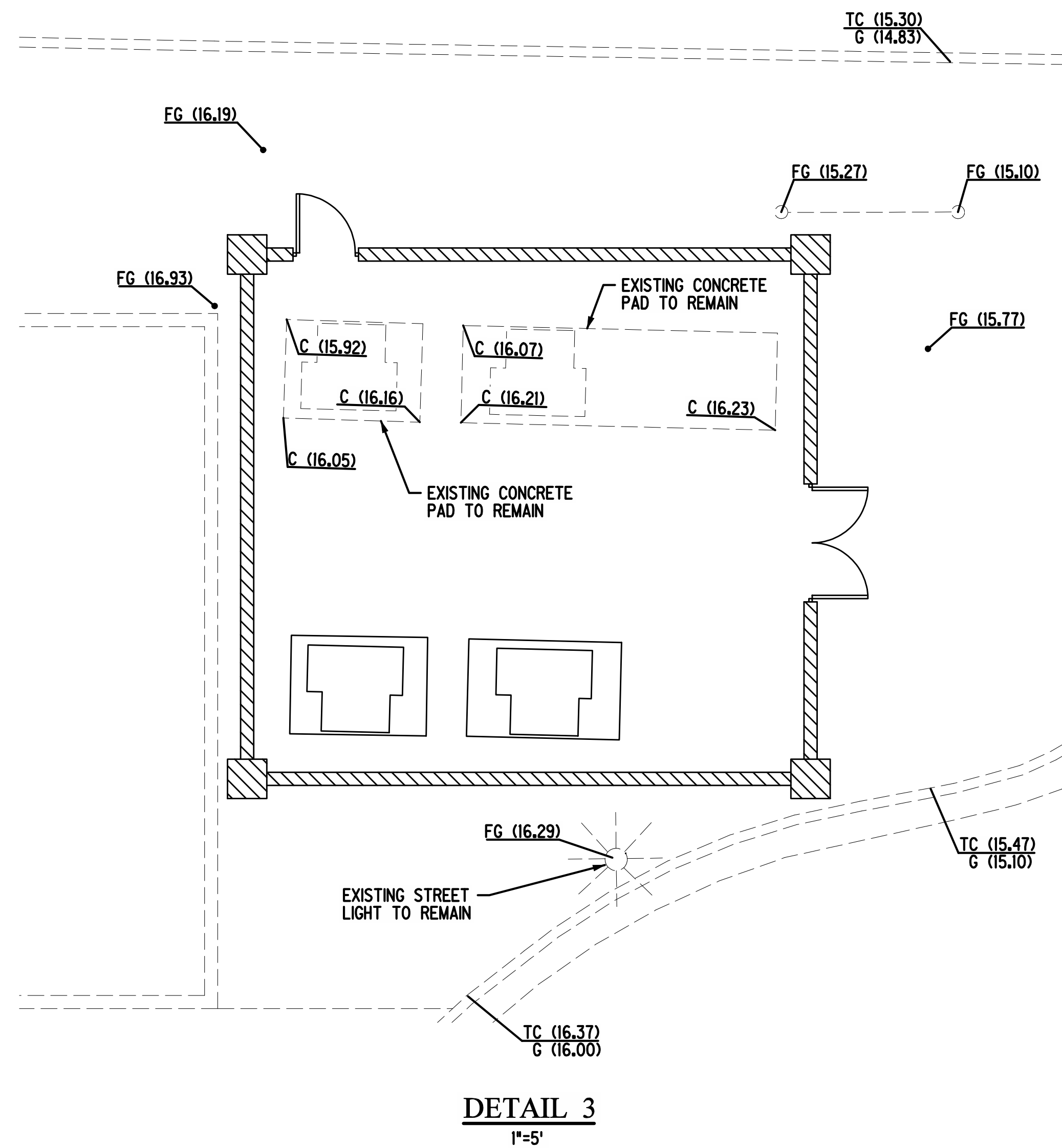


FINAL DESIGN SUBMISSION / NOT FOR CONSTRUCTION

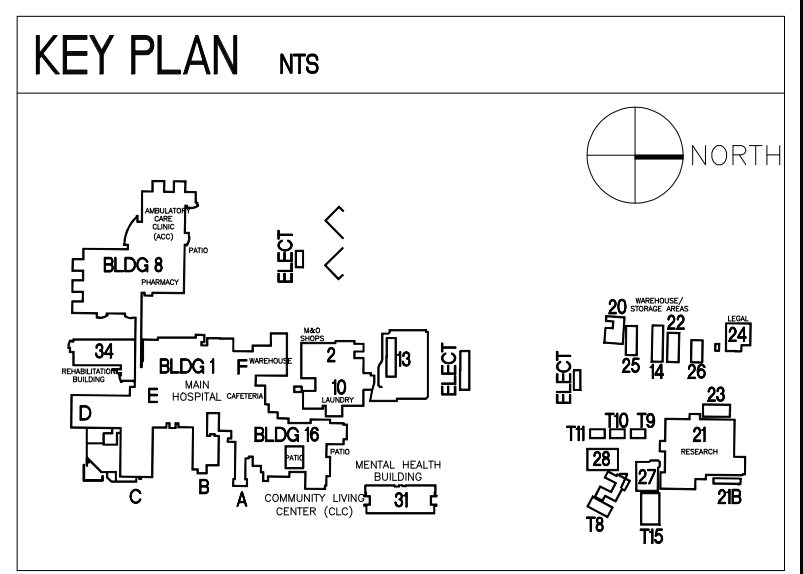
[illegible]



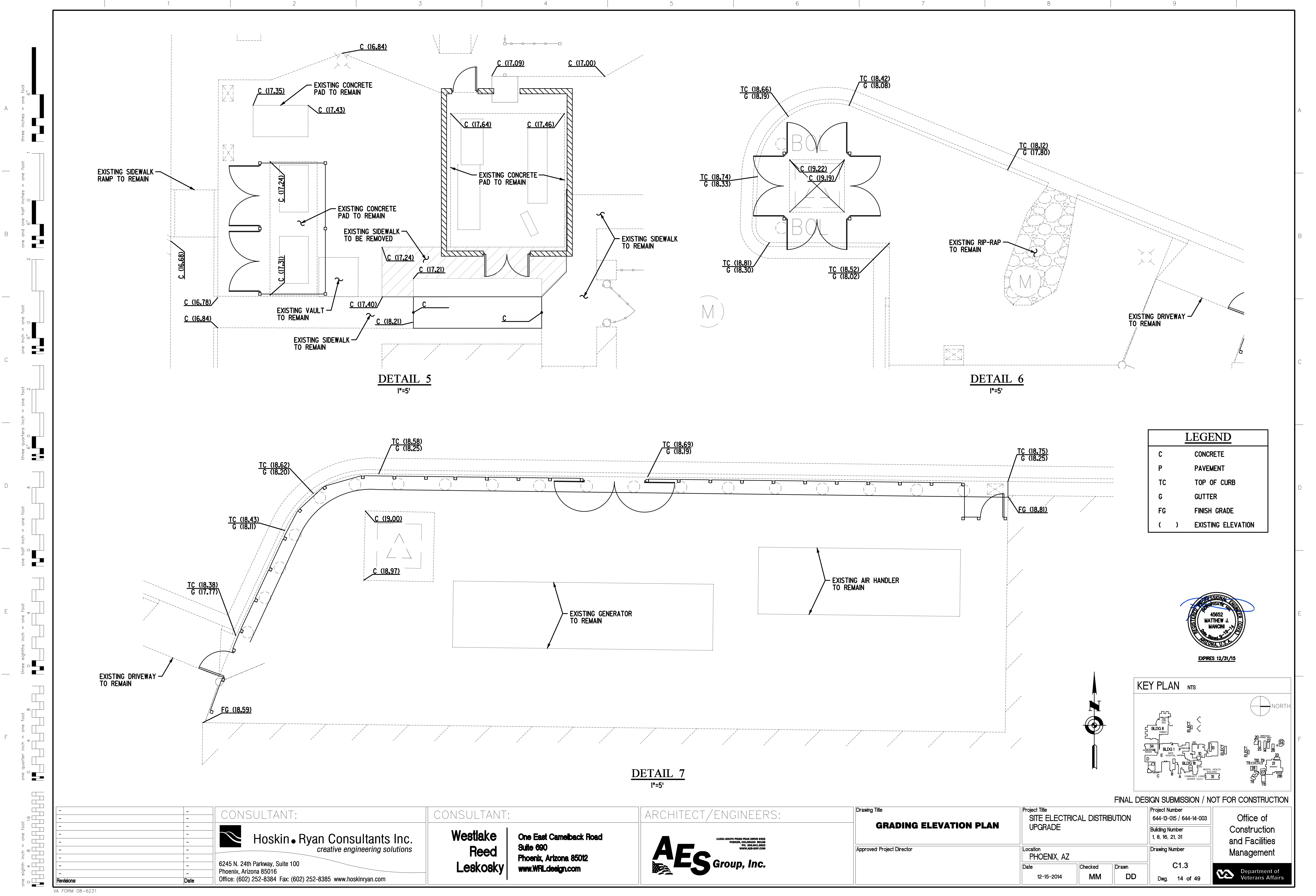
three inches = one foot
one and one half inches = one foot
one inch = one foot
three quarters inch = one foot
one half inch = one foot
three eighths inch = one foot
one quarter inch = one foot
one eighth inch = one foot



| LEGEND | |
|--------|--------------------|
| C | CONCRETE |
| P | PAVEMENT |
| TC | TOP OF CURB |
| G | GUTTER |
| FG | FINISH GRADE |
| () | EXISTING ELEVATION |



| | | | | | | |
|---|--|--|--|---|---|--|
| CONSULTANT: Hoskin-Ryan Consultants Inc. creative engineering solutions 6245 N. 24th Parkway, Suite 100 Phoenix, Arizona 85016 Office: (602) 252-8384 Fax: (602) 252-8385 www.hoskinryan.com | CONSULTANT: Westlake Reed Leskosky One East Camelback Road Suite 690 Phoenix, Arizona 85012 www.WRLdesign.com | ARCHITECT/ENGINEERS: AES Group, Inc. 5400 SOUTH PUEBLO AVE. SUITE 100 PARKER, COLORADO 80138 PH: 303.841.3555 WWW.AES-GRP.COM | Drawing Title GRADING ELEVATION PLAN Approved: Project Director | Project Title SITE ELECTRICAL DISTRIBUTION UPGRADE Location PHOENIX, AZ Date 12-15-2014 Checked MM Drawn DD | Project Number 644-13-015 / 644-14-003 Building Number 1, 8, 16, 21, 31 Drawing Number C1.2 Dwg. 13 of 49 | Office of Construction and Facilities Management Department of Veterans Affairs |
|---|--|--|--|---|---|--|



| | | | | | | | | | | | | | | | | | |
|------------|--|-------|--|--|--|---|--|--|--|----------------------------|--|--------------------------------------|--|-------------------------------------|--|--|--|
| Revisions: | | Date: | | CONSULTANT: | | CONSULTANT: | | ARCHITECT/ENGINEERS: | | Drawing Title | | Project Title | | Project Number | | Office of Construction and Facilities Management | |
| | | | | Hoskin • Ryan Consultants Inc. | | Westlake Reed Leskosky | | AES Group, Inc. | | GRADING ELEVATION PLAN | | SITE ELECTRICAL DISTRIBUTION UPGRADE | | 644-13-015 / 644-14-003 | | Department of Veterans Affairs | |
| | | | | 6245 N. 24th Parkway, Suite 100 Phoenix, Arizona 85016 Office: (602) 252-8384 Fax: (602) 252-8385 www.hoskinryan.com | | One East Camelback Road Suite 690 Phoenix, Arizona 85012 www.WRLdesign.com | | 4400 SOUTH PUEBLO AVENUE #102 PARKER, COLORADO 80138 PH: 303.841.3552 WWW.AES-GRP.COM | | Approved: Project Director | | Location PHOENIX, AZ | | Building Number 1, 8, 16, 21, 31 | | Drawing Number C1.3 | |
| | | | | | | | | | | | | Date 12-15-2014 | | Checked MM | | Drawn DD | |
| | | | | | | | | | | | | | | | | Dwg. 14 of 49 | |