

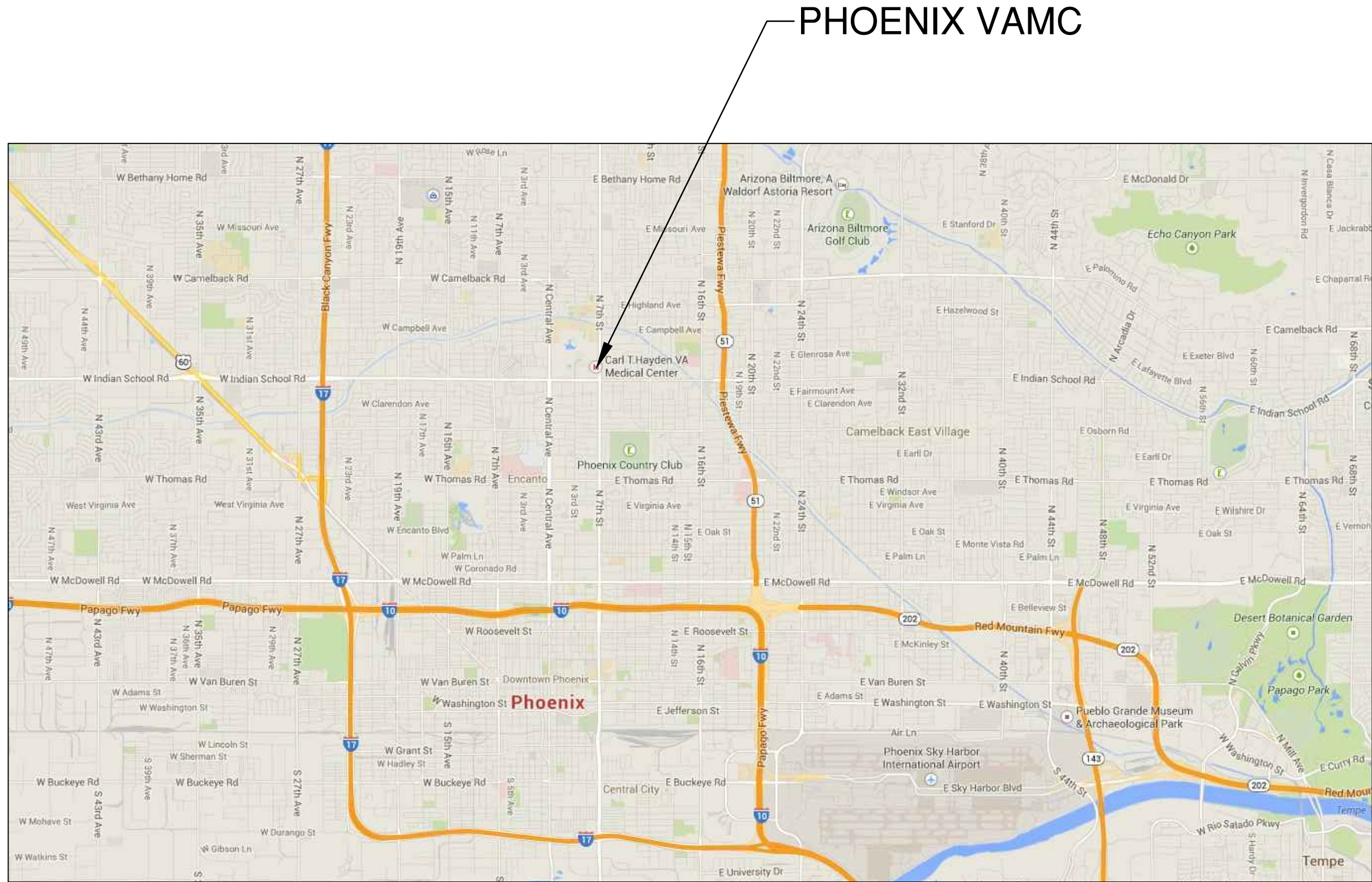


VICINITY
MAP
NOT TO SCALE

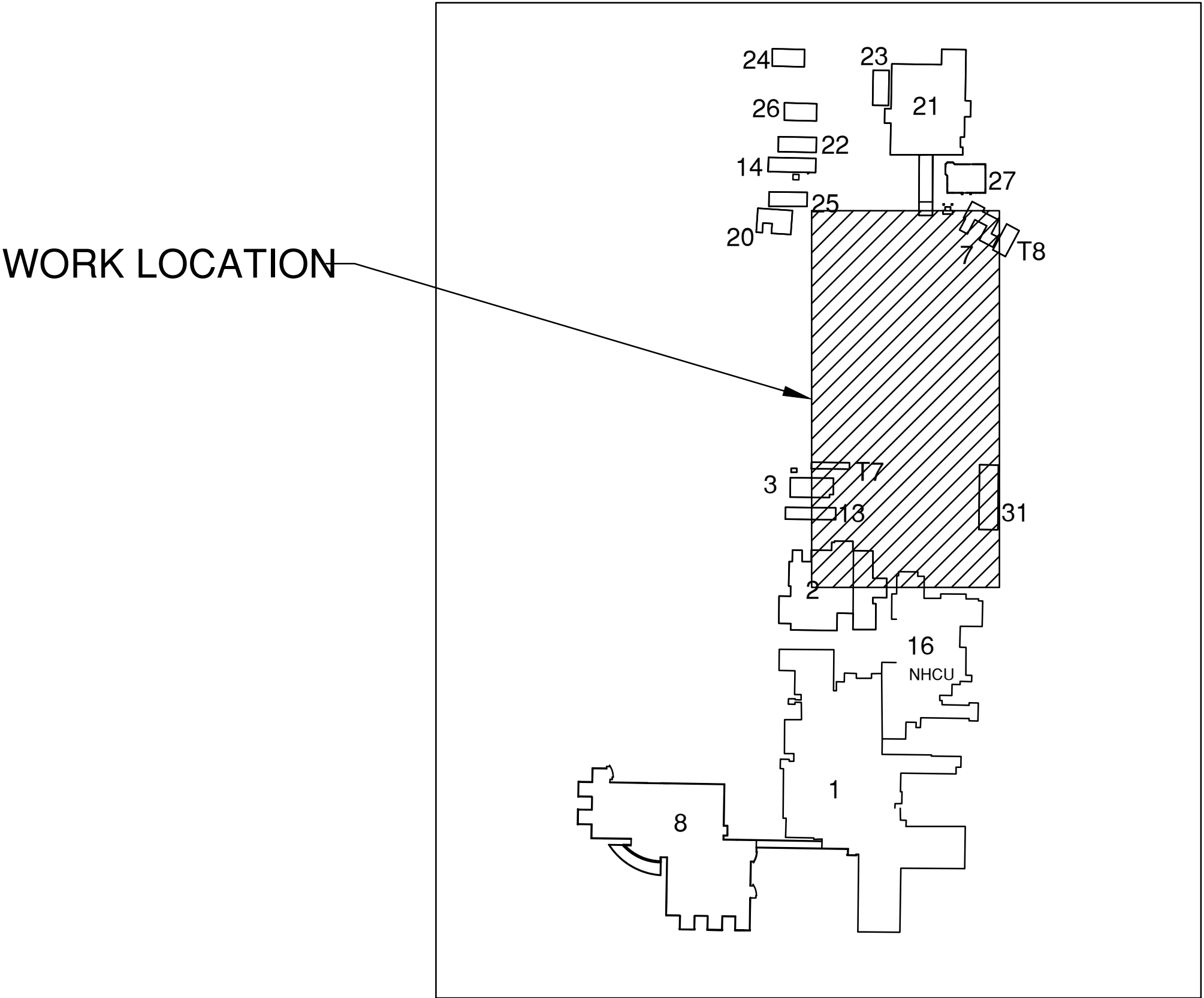
UPGRADE CHILLED WATER SYSTEM

PHOENIX VAMC
DEPARTMENT OF VETERANS AFFAIRS
650 EAST INDIAN SCHOOL ROAD
PHOENIX, AZ 85012

SHEET INDEX	
SHEET NUMBER	SHEET NAME
GI001	COVER SHEET AND SHEET INDEX
C101	SITE PLAN ALTERNATIVE 1
C102	SITE PLAN ALTERNATIVE 2
C103	SITE PLAN ALTERNATIVE 3
C501	CONSTRUCTION DETAILS
C502	CONSTRUCTION DETAILS



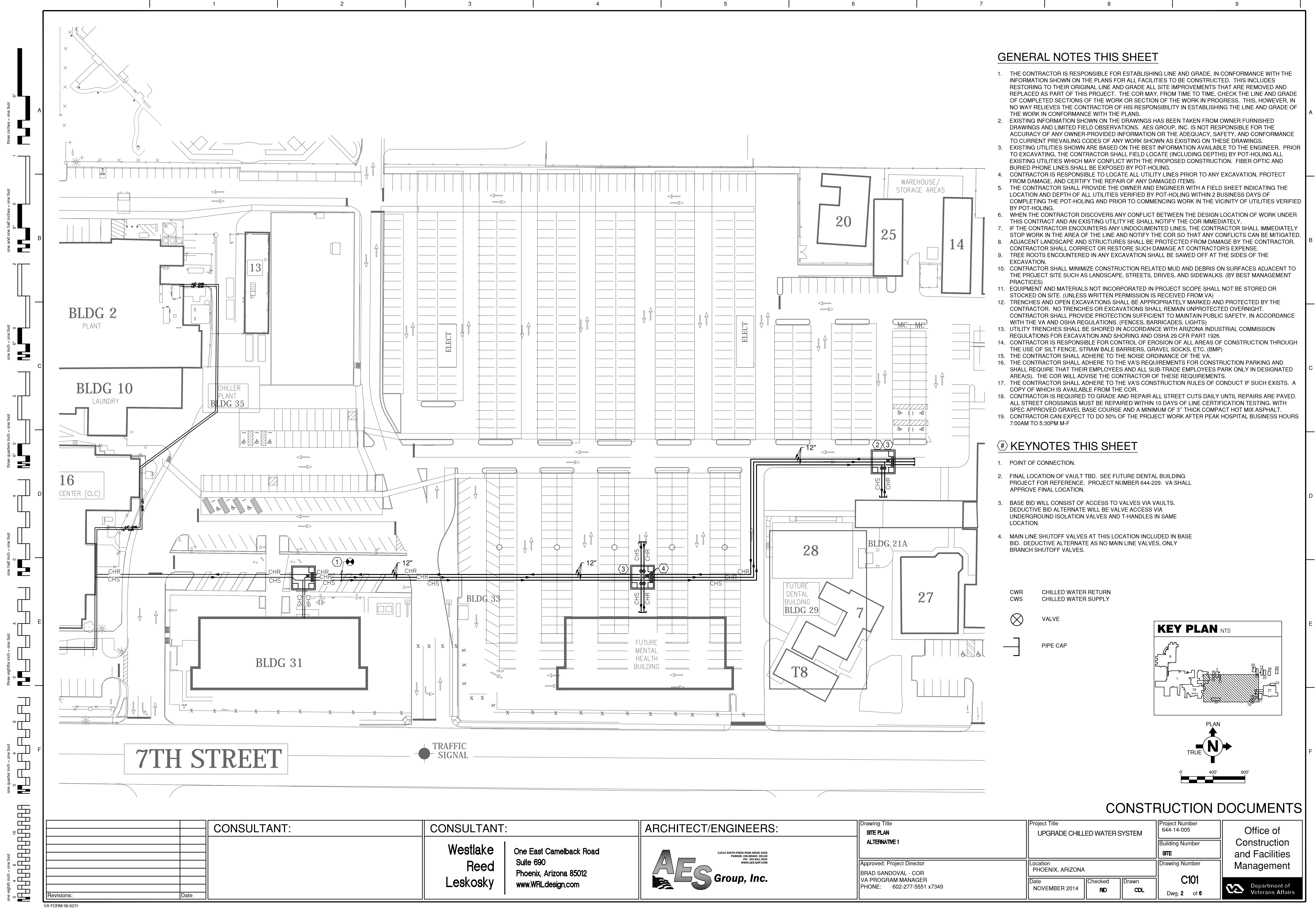
LOCATION
MAP
NOT TO SCALE



SITE MAP
NOT TO SCALE

CONSTRUCTION DOCUMENTS

	CONSULTANT:	CONSULTANT:	ARCHITECT/ENGINEERS:	Drawing Title COVER SHEET AND SHEET INDEX	Project Title UPGRADE CHILLED WATER SYSTEM	Project Number 644-14-005	Office of Construction and Facilities Management
		Westlake Reed Leskosky	One East Camelback Road Suite 690 Phoenix, Arizona 85012 www.WRLdesign.com			Building Number	
				Approved: Project Director BRAD SANDOVAL - COR VA PROGRAM MANAGER PHONE: 602-277-5551 x7349	Location PHOENIX, ARIZONA	Drawing Number GI001	Department of Veterans Affairs
					Date NOVEMBER 2014	Checked ALK	
						Dwg. 1 of 6	



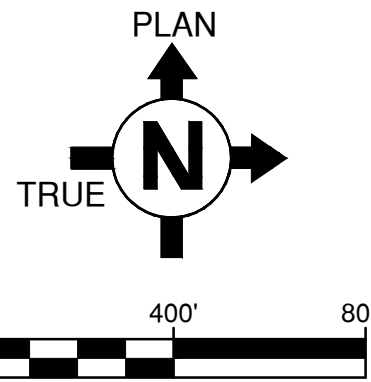
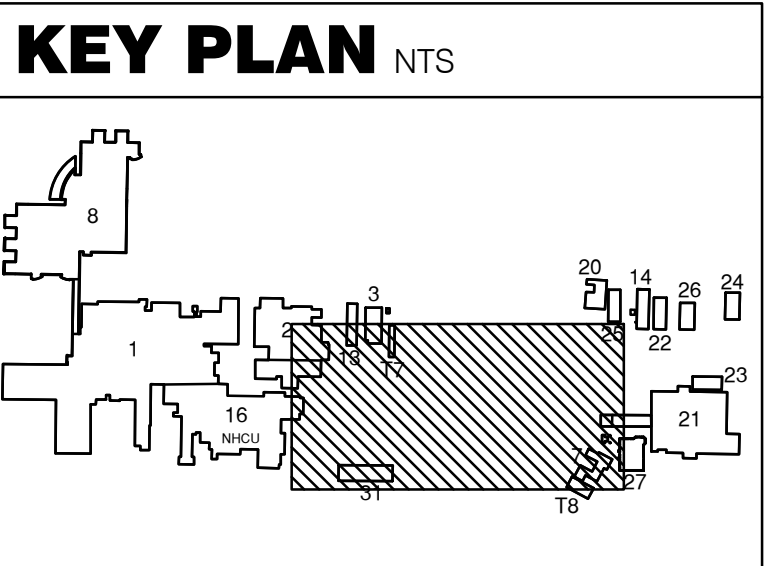
GENERAL NOTES THIS SHEET

1. THE CONTRACTOR IS RESPONSIBLE FOR ESTABLISHING LINE AND GRADE, IN CONFORMANCE WITH THE INFORMATION SHOWN ON THE PLANS FOR ALL FACILITIES TO BE CONSTRUCTED. THIS INCLUDES RESTORING TO THEIR ORIGINAL LINE AND GRADE ALL SITE IMPROVEMENTS THAT ARE REMOVED AND REPLACED AS PART OF THIS PROJECT. THE COR MAY, FROM TIME TO TIME, CHECK THE LINE AND GRADE OF COMPLETED SECTIONS OF THE WORK OR SECTION OF THE WORK IN PROGRESS. THIS, HOWEVER, IN NO WAY RELIEVES THE CONTRACTOR OF HIS RESPONSIBILITY IN ESTABLISHING THE LINE AND GRADE OF THE WORK IN CONFORMANCE WITH THE PLANS.
2. EXISTING INFORMATION SHOWN ON THE DRAWINGS HAS BEEN TAKEN FROM OWNER FURNISHED DRAWINGS AND LIMITED FIELD OBSERVATIONS. AES GROUP, INC. IS NOT RESPONSIBLE FOR THE ACCURACY OF ANY OWNER-PROVIDED INFORMATION OR THE ADEQUACY, SAFETY, AND CONFORMANCE TO CURRENT PREVAILING CODES OF ANY WORK SHOWN AS EXISTING ON THESE DRAWINGS.
3. EXISTING UTILITIES SHOWN ARE BASED ON THE BEST INFORMATION AVAILABLE TO THE ENGINEER. PRIOR TO EXCAVATING, THE CONTRACTOR SHALL FIELD LOCATE (INCLUDING DEPTHS) BY POT-HOLING ALL EXISTING UTILITIES WHICH MAY CONFLICT WITH THE PROPOSED CONSTRUCTION. FIBER OPTIC AND BURIED PHONE LINES SHALL BE EXPOSED BY POT-HOLING.
4. CONTRACTOR IS RESPONSIBLE TO LOCATE ALL UTILITY LINES PRIOR TO ANY EXCAVATION, PROTECT FROM DAMAGE, AND CERTIFY THE REPAIR OF ANY DAMAGED ITEMS.
5. THE CONTRACTOR SHALL PROVIDE THE OWNER AND ENGINEER WITH A FIELD SHEET INDICATING THE LOCATION AND DEPTH OF ALL UTILITIES VERIFIED BY POT-HOLING WITHIN 2 BUSINESS DAYS OF COMPLETING THE POT-HOLING AND PRIOR TO COMMENCING WORK IN THE VICINITY OF UTILITIES VERIFIED BY POT-HOLING.
6. WHEN THE CONTRACTOR DISCOVERS ANY CONFLICT BETWEEN THE DESIGN LOCATION OF WORK UNDER THIS CONTRACT AND AN EXISTING UTILITY HE SHALL NOTIFY THE COR IMMEDIATELY.
7. IF THE CONTRACTOR ENCOUNTERS ANY UNDOCUMENTED LINES, THE CONTRACTOR SHALL IMMEDIATELY STOP WORK IN THE AREA OF THE LINE AND NOTIFY THE COR SO THAT ANY CONFLICTS CAN BE MITIGATED.
8. ADJACENT LANDSCAPE AND STRUCTURES SHALL BE PROTECTED FROM DAMAGE BY THE CONTRACTOR. CONTRACTOR SHALL CORRECT OR RESTORE SUCH DAMAGE AT CONTRACTOR'S EXPENSE.
9. TREE ROOTS ENCOUNTERED IN ANY EXCAVATION SHALL BE SAWED OFF AT THE SIDES OF THE EXCAVATION.
10. CONTRACTOR SHALL MINIMIZE CONSTRUCTION RELATED MUD AND DEBRIS ON SURFACES ADJACENT TO THE PROJECT SITE SUCH AS LANDSCAPE, STREETS, DRIVES, AND SIDEWALKS. (BY BEST MANAGEMENT PRACTICES)
11. EQUIPMENT AND MATERIALS NOT INCORPORATED IN PROJECT SCOPE SHALL NOT BE STORED OR STOCKED ON SITE. (UNLESS WRITTEN PERMISSION IS RECEIVED FROM VA)
12. TRENCHES AND OPEN EXCAVATIONS SHALL BE APPROPRIATELY MARKED AND PROTECTED BY THE CONTRACTOR. NO TRENCHES OR EXCAVATIONS SHALL REMAIN UNPROTECTED OVERNIGHT. CONTRACTOR SHALL PROVIDE PROTECTION SUFFICIENT TO MAINTAIN PUBLIC SAFETY, IN ACCORDANCE WITH THE VA AND OSHA REGULATIONS. (FENCES, BARRICADES, LIGHTS)
13. UTILITY TRENCHES SHALL BE SHORED IN ACCORDANCE WITH ARIZONA INDUSTRIAL COMMISSION REGULATIONS FOR EXCAVATION AND SHORING AND OSHA 29 CFR PART 1926.
14. CONTRACTOR IS RESPONSIBLE FOR CONTROL OF EROSION OF ALL AREAS OF CONSTRUCTION THROUGH THE USE OF SILT FENCE, STRAW BALE BARRIERS, GRAVEL SOCKS, ETC. (BMP)
15. THE CONTRACTOR SHALL ADHERE TO THE NOISE ORDINANCE OF THE VA.
16. THE CONTRACTOR SHALL ADHERE TO THE VA'S REQUIREMENTS FOR CONSTRUCTION PARKING AND SHALL REQUIRE THAT THEIR EMPLOYEES AND ALL SUB-TRADE EMPLOYEES PARK ONLY IN DESIGNATED AREAS. THE COR WILL ADVISE THE CONTRACTOR OF THESE REQUIREMENTS.
17. THE CONTRACTOR SHALL ADHERE TO THE VA'S CONSTRUCTION RULES OF CONDUCT IF SUCH EXISTS. A COPY OF WHICH IS AVAILABLE FROM THE COR.
18. CONTRACTOR IS REQUIRED TO GRADE AND REPAIR ALL STREET CUTS DAILY UNTIL REPAIRS ARE PAVED. ALL STREET CROSSINGS MUST BE REPAIRED WITHIN 10 DAYS OF LINE CERTIFICATION TESTING. WITH SPEC APPROVED GRAVEL BASE COURSE AND A MINIMUM OF 3" THICK COMPACT HOT MIX ASPHALT.
19. CONTRACTOR CAN EXPECT TO DO 50% OF THE PROJECT WORK AFTER PEAK HOSPITAL BUSINESS HOURS 7:00AM TO 5:30PM M-F

KEYNOTES THIS SHEET

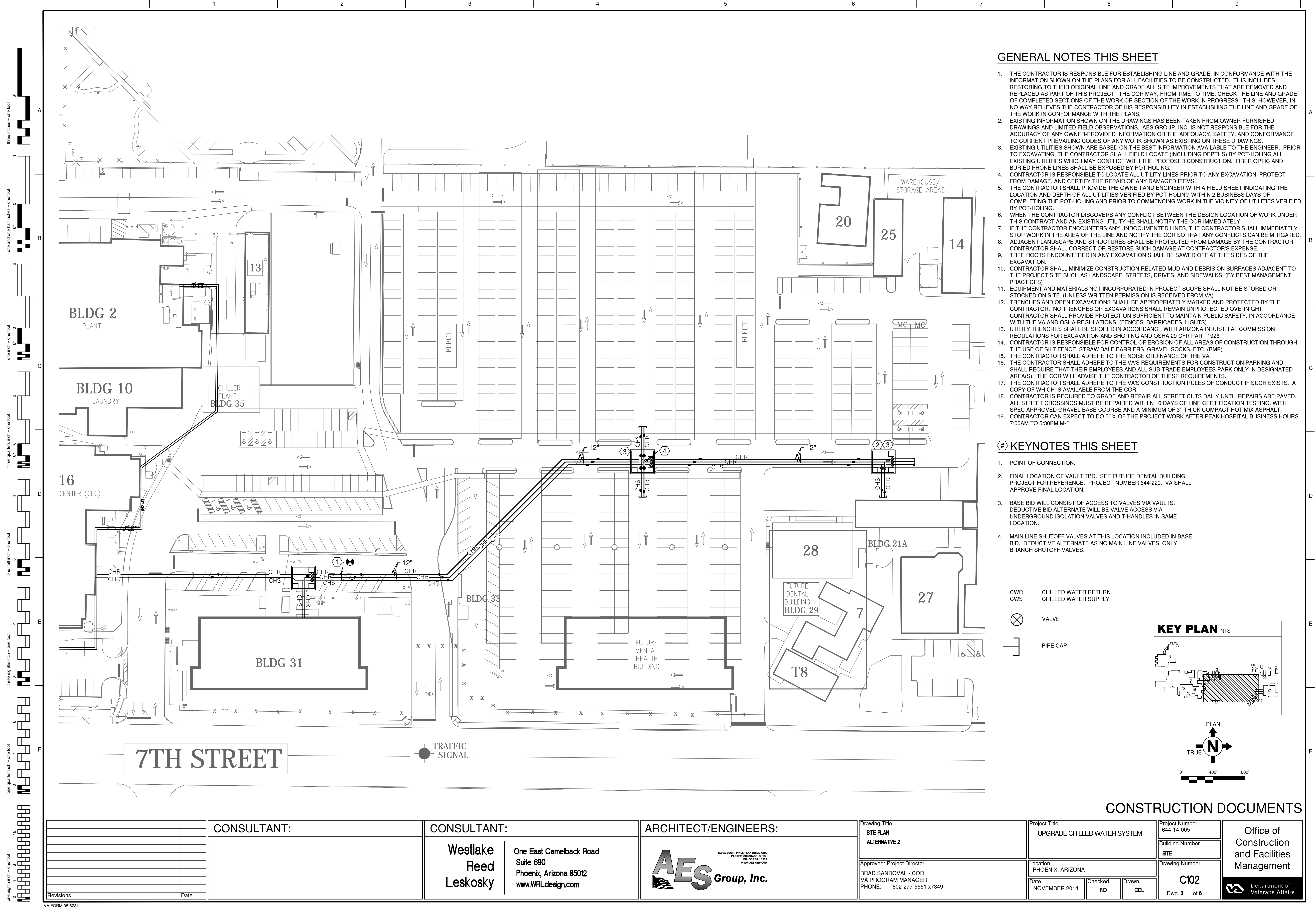
1. POINT OF CONNECTION.
2. FINAL LOCATION OF VAULT TBD. SEE FUTURE DENTAL BUILDING PROJECT FOR REFERENCE. PROJECT NUMBER 644-229. VA SHALL APPROVE FINAL LOCATION.
3. BASE BID WILL CONSIST OF ACCESS TO VALVES VIA VAULTS. DEDUCTIVE BID ALTERNATE WILL BE VALVE ACCESS VIA UNDERGROUND ISOLATION VALVES AND T-HANDLES IN SAME LOCATION.
4. MAIN LINE SHUTOFF VALVES AT THIS LOCATION INCLUDED IN BASE BID. DEDUCTIVE ALTERNATE AS NO MAIN LINE VALVES, ONLY BRANCH SHUTOFF VALVES.

- CWR CHILLED WATER RETURN
CWS CHILLED WATER SUPPLY
- ⊗ VALVE
- ┌ PIPE CAP



CONSTRUCTION DOCUMENTS

																																																																																																																																																																																																																																																																																																																																																																																																																																																																																																																																																																																																																																																																																																																																																																																																																																																																																																																																																																																																																																																																																																																																																																																																																																																																																																																																																																																																																					</
--	--	--	--	--	--	--	--	--	--	--	--	--	--	--	--	--	--	--	--	--	--	--	--	--	--	--	--	--	--	--	--	--	--	--	--	--	--	--	--	--	--	--	--	--	--	--	--	--	--	--	--	--	--	--	--	--	--	--	--	--	--	--	--	--	--	--	--	--	--	--	--	--	--	--	--	--	--	--	--	--	--	--	--	--	--	--	--	--	--	--	--	--	--	--	--	--	--	--	--	--	--	--	--	--	--	--	--	--	--	--	--	--	--	--	--	--	--	--	--	--	--	--	--	--	--	--	--	--	--	--	--	--	--	--	--	--	--	--	--	--	--	--	--	--	--	--	--	--	--	--	--	--	--	--	--	--	--	--	--	--	--	--	--	--	--	--	--	--	--	--	--	--	--	--	--	--	--	--	--	--	--	--	--	--	--	--	--	--	--	--	--	--	--	--	--	--	--	--	--	--	--	--	--	--	--	--	--	--	--	--	--	--	--	--	--	--	--	--	--	--	--	--	--	--	--	--	--	--	--	--	--	--	--	--	--	--	--	--	--	--	--	--	--	--	--	--	--	--	--	--	--	--	--	--	--	--	--	--	--	--	--	--	--	--	--	--	--	--	--	--	--	--	--	--	--	--	--	--	--	--	--	--	--	--	--	--	--	--	--	--	--	--	--	--	--	--	--	--	--	--	--	--	--	--	--	--	--	--	--	--	--	--	--	--	--	--	--	--	--	--	--	--	--	--	--	--	--	--	--	--	--	--	--	--	--	--	--	--	--	--	--	--	--	--	--	--	--	--	--	--	--	--	--	--	--	--	--	--	--	--	--	--	--	--	--	--	--	--	--	--	--	--	--	--	--	--	--	--	--	--	--	--	--	--	--	--	--	--	--	--	--	--	--	--	--	--	--	--	--	--	--	--	--	--	--	--	--	--	--	--	--	--	--	--	--	--	--	--	--	--	--	--	--	--	--	--	--	--	--	--	--	--	--	--	--	--	--	--	--	--	--	--	--	--	--	--	--	--	--	--	--	--	--	--	--	--	--	--	--	--	--	--	--	--	--	--	--	--	--	--	--	--	--	--	--	--	--	--	--	--	--	--	--	--	--	--	--	--	--	--	--	--	--	--	--	--	--	--	--	--	--	--	--	--	--	--	--	--	--	--	--	--	--	--	--	--	--	--	--	--	--	--	--	--	--	--	--	--	--	--	--	--	--	--	--	--	--	--	--	--	--	--	--	--	--	--	--	--	--	--	--	--	--	--	--	--	--	--	--	--	--	--	--	--	--	--	--	--	--	--	--	--	--	--	--	--	--	--	--	--	--	--	--	--	--	--	--	--	--	--	--	--	--	--	--	--	--	--	--	--	--	--	--	--	--	--	--	--	--	--	--	--	--	--	--	--	--	--	--	--	--	--	--	--	--	--	--	--	--	--	--	--	--	--	--	--	--	--	--	--	--	--	--	--	--	--	--	--	--	--	--	--	--	--	--	--	--	--	--	--	--	--	--	--	--	--	--	--	--	--	--	--	--	--	--	--	--	--	--	--	--	--	--	--	--	--	--	--	--	--	--	--	--	--	--	--	--	--	--	--	--	--	--	--	--	--	--	--	--	--	--	--	--	--	--	--	--	--	--	--	--	--	--	--	--	--	--	--	--	--	--	--	--	--	--	--	--	--	--	--	--	--	--	--	--	--	--	--	--	--	--	--	--	--	--	--	--	--	--	--	--	--	--	--	--	--	--	--	--	--	--	--	--	--	--	--	--	--	--	--	--	--	--	--	--	--	--	--	--	--	--	--	--	--	--	--	--	--	--	--	--	--	--	--	--	--	--	--	--	--	--	--	--	--	--	--	--	--	--	--	--	--	--	--	--	--	--	--	--	--	--	--	--	--	--	--	--	--	--	--	--	--	--	--	--	--	--	--	--	--	--	--	--	--	--	--	--	--	--	--	--	--	--	--	--	--	--	--	--	--	--	--	--	--	--	--	--	--	--	--	--	--	--	--	--	--	--	--	--	--	--	--	--	--	--	--	--	--	--	--	--	--	--	--	--	--	--	--	--	--	--	--	--	--	--	--	--	--	--	--	--	--	--	--	--	--	--	--	--	--	--	--	--	--	--	--	--	--	--	--	--	--	--	--	--	--	--	--	--	--	--	--	--	--	--	--	--	--	--	--	--	--	--	--	--	--	--	--	--	--	--	--	--	--	--	--	--	--	--	--	--	--	--	--	--	--	--	--	--	--	--	--	--	--	--	--	--	--	--	--	--	--	--	--	--	--	--	--	--	--	--	--	--	--	--	--	--	--	--	--	--	--	--	--	--	--	--	--	--	--	--	--	--	--	--	--	--	--	--	--	--	--	--	--	--	--	--	--	--	--	--	--	--	--	--	--	--	--	--	--	--	--	--	--	--	--	--	--	--	--	--	--	--	--	--	--	--	--	--	--	--	--	--	--	--	--	--	--	--	--	--	--	--	--	--	--	--	--	--	--	--	--	--	--	--	--	--	--	--	--	--	--	--	--	--	--	--	--	--	--	--	--	--	--	--	--	--	--	--	--	--	--	--	--	--	--	--	--	--	--	--	--	--	--	--	--	--	--	--	--	--	--	--	--	--	--	--	--	--	--	--	--	--	--	--	--	--	--	--	--	--	--	--	--	--	--	--	--	--	--	--	--	--	--	--	--	--	--	--	--	--	--	--	--	--	--	--	--	--	--	--	--	--	--	--	--	--	--	--	--	--	--	--	--	--	--	--	--	--	--	--	--	--	--	--	--	--	--	--	--	--	--	--	--	--	--	--	--	--	--	--	--	--	--	--	--	--	--	--	--	--	--	--	--	--	--	--	--	--	--	--	--	--	--	--	--	--	--	--	--	--	--	--	--	--	--	--	--	--	--	--	--	--	--	--	--	--	--	--	--	--	--	--	--	--	--	--	--	--	--	--	--	--	--	--	--	--	--	--	--	--	--	--	--	--	--	--	--	--	--	--	--	--	--	--	--	--	--	--	--	--	--	--	--	--	--	--	--	--	--	--	--	--	--	--	--	--	--	--	--	--	--	--	--	--	--	--	--	--	--	--	--	--	--	----



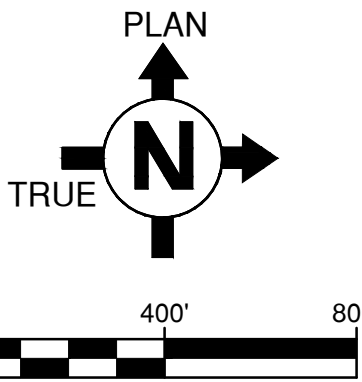
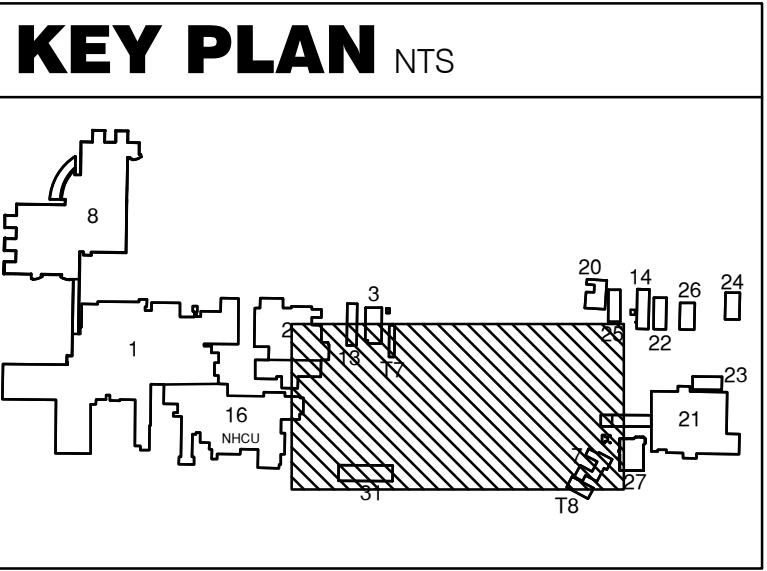
GENERAL NOTES THIS SHEET

- 1. THE CONTRACTOR IS RESPONSIBLE FOR ESTABLISHING LINE AND GRADE, IN CONFORMANCE WITH THE INFORMATION SHOWN ON THE PLANS FOR ALL FACILITIES TO BE CONSTRUCTED. THIS INCLUDES RESTORING TO THEIR ORIGINAL LINE AND GRADE ALL SITE IMPROVEMENTS THAT ARE REMOVED AND REPLACED AS PART OF THIS PROJECT. THE COR MAY, FROM TIME TO TIME, CHECK THE LINE AND GRADE OF COMPLETED SECTIONS OF THE WORK OR SECTION OF THE WORK IN PROGRESS. THIS, HOWEVER, IN NO WAY RELIEVES THE CONTRACTOR OF HIS RESPONSIBILITY IN ESTABLISHING THE LINE AND GRADE OF THE WORK IN CONFORMANCE WITH THE PLANS.
- 2. EXISTING INFORMATION SHOWN ON THE DRAWINGS HAS BEEN TAKEN FROM OWNER FURNISHED DRAWINGS AND LIMITED FIELD OBSERVATIONS. AES GROUP, INC. IS NOT RESPONSIBLE FOR THE ACCURACY OF ANY OWNER-PROVIDED INFORMATION OR THE ADEQUACY, SAFETY, AND CONFORMANCE TO CURRENT PREVAILING CODES OF ANY WORK SHOWN AS EXISTING ON THESE DRAWINGS.
- 3. EXISTING UTILITIES SHOWN ARE BASED ON THE BEST INFORMATION AVAILABLE TO THE ENGINEER. PRIOR TO EXCAVATING, THE CONTRACTOR SHALL FIELD LOCATE (INCLUDING DEPTHS) BY POT-HOLING ALL EXISTING UTILITIES WHICH MAY CONFLICT WITH THE PROPOSED CONSTRUCTION. FIBER OPTIC AND BURIED PHONE LINES SHALL BE EXPOSED BY POT-HOLING.
- 4. CONTRACTOR IS RESPONSIBLE TO LOCATE ALL UTILITY LINES PRIOR TO ANY EXCAVATION, PROTECT FROM DAMAGE, AND CERTIFY THE REPAIR OF ANY DAMAGED ITEMS.
- 5. THE CONTRACTOR SHALL PROVIDE THE OWNER AND ENGINEER WITH A FIELD SHEET INDICATING THE LOCATION AND DEPTH OF ALL UTILITIES VERIFIED BY POT-HOLING WITHIN 2 BUSINESS DAYS OF COMPLETING THE POT-HOLING AND PRIOR TO COMMENCING WORK IN THE VICINITY OF UTILITIES VERIFIED BY POT-HOLING.
- 6. WHEN THE CONTRACTOR DISCOVERS ANY CONFLICT BETWEEN THE DESIGN LOCATION OF WORK UNDER THIS CONTRACT AND AN EXISTING UTILITY HE SHALL NOTIFY THE COR IMMEDIATELY.
- 7. IF THE CONTRACTOR ENCOUNTERS ANY UNDOCUMENTED LINES, THE CONTRACTOR SHALL IMMEDIATELY STOP WORK IN THE AREA OF THE LINE AND NOTIFY THE COR SO THAT ANY CONFLICTS CAN BE MITIGATED.
- 8. ADJACENT LANDSCAPE AND STRUCTURES SHALL BE PROTECTED FROM DAMAGE BY THE CONTRACTOR. CONTRACTOR SHALL CORRECT OR RESTORE SUCH DAMAGE AT CONTRACTOR'S EXPENSE.
- 9. TREE ROOTS ENCOUNTERED IN ANY EXCAVATION SHALL BE SAWED OFF AT THE SIDES OF THE EXCAVATION.
- 10. CONTRACTOR SHALL MINIMIZE CONSTRUCTION RELATED MUD AND DEBRIS ON SURFACES ADJACENT TO THE PROJECT SITE SUCH AS LANDSCAPE, STREETS, DRIVES, AND SIDEWALKS. (BY BEST MANAGEMENT PRACTICES)
- 11. EQUIPMENT AND MATERIALS NOT INCORPORATED IN PROJECT SCOPE SHALL NOT BE STORED OR STOCKED ON SITE. (UNLESS WRITTEN PERMISSION IS RECEIVED FROM VA)
- 12. TRENCHES AND OPEN EXCAVATIONS SHALL BE APPROPRIATELY MARKED AND PROTECTED BY THE CONTRACTOR. NO TRENCHES OR EXCAVATIONS SHALL REMAIN UNPROTECTED OVERNIGHT. CONTRACTOR SHALL PROVIDE PROTECTION SUFFICIENT TO MAINTAIN PUBLIC SAFETY, IN ACCORDANCE WITH THE VA AND OSHA REGULATIONS. (FENCES, BARRICADES, LIGHTS)
- 13. UTILITY TRENCHES SHALL BE SHORED IN ACCORDANCE WITH ARIZONA INDUSTRIAL COMMISSION REGULATIONS FOR EXCAVATION AND SHORING AND OSHA 29 CFR PART 1926.
- 14. CONTRACTOR IS RESPONSIBLE FOR CONTROL OF EROSION OF ALL AREAS OF CONSTRUCTION THROUGH THE USE OF SILT FENCE, STRAW BALE BARRIERS, GRAVEL SOCKS, ETC. (BMP)
- 15. THE CONTRACTOR SHALL ADHERE TO THE NOISE ORDINANCE OF THE VA.
- 16. THE CONTRACTOR SHALL ADHERE TO THE VA'S REQUIREMENTS FOR CONSTRUCTION PARKING AND SHALL REQUIRE THAT THEIR EMPLOYEES AND ALL SUB-TRADE EMPLOYEES PARK ONLY IN DESIGNATED AREAS. THE COR WILL ADVISE THE CONTRACTOR OF THESE REQUIREMENTS.
- 17. THE CONTRACTOR SHALL ADHERE TO THE VA'S CONSTRUCTION RULES OF CONDUCT IF SUCH EXISTS. A COPY OF WHICH IS AVAILABLE FROM THE COR.
- 18. CONTRACTOR IS REQUIRED TO GRADE AND REPAIR ALL STREET CUTS DAILY UNTIL REPAIRS ARE PAVED. ALL STREET CROSSINGS MUST BE REPAIRED WITHIN 10 DAYS OF LINE CERTIFICATION TESTING. WITH SPEC APPROVED GRAVEL BASE COURSE AND A MINIMUM OF 3" THICK COMPACT HOT MIX ASPHALT.
- 19. CONTRACTOR CAN EXPECT TO DO 50% OF THE PROJECT WORK AFTER PEAK HOSPITAL BUSINESS HOURS 7:00AM TO 5:30PM M-F



KEYNOTES THIS SHEET

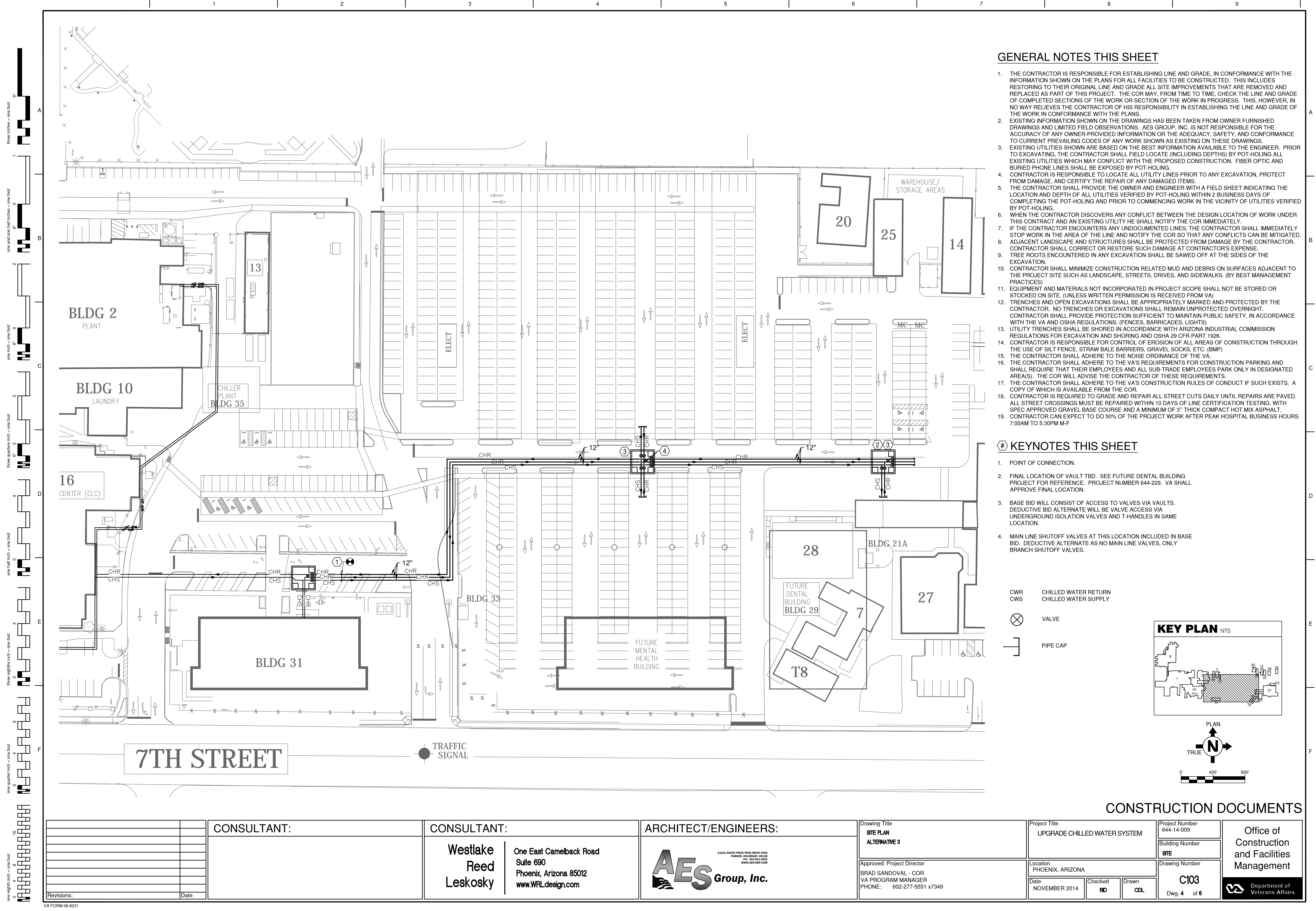
- 1. POINT OF CONNECTION.
- 2. FINAL LOCATION OF VAULT TBD. SEE FUTURE DENTAL BUILDING PROJECT FOR REFERENCE. PROJECT NUMBER 644-229. VA SHALL APPROVE FINAL LOCATION.
- 3. BASE BID WILL CONSIST OF ACCESS TO VALVES VIA VAULTS. DEDUCTIVE BID ALTERNATE WILL BE VALVE ACCESS VIA UNDERGROUND ISOLATION VALVES AND T-HANDLES IN SAME LOCATION.
- 4. MAIN LINE SHUTOFF VALVES AT THIS LOCATION INCLUDED IN BASE BID. DEDUCTIVE ALTERNATE AS NO MAIN LINE VALVES, ONLY BRANCH SHUTOFF VALVES.

- CWR CHILLED WATER RETURN
- CWS CHILLED WATER SUPPLY
- ⊗ VALVE
- ⌋ PIPE CAP



CONSTRUCTION DOCUMENTS

		CONSULTANT:	CONSULTANT:	ARCHITECT/ENGINEERS:	Drawing Title SITE PLAN ALTERNATIVE 2	Project Title UPGRADE CHILLED WATER SYSTEM	Project Number 644-14-005	Office of Construction and Facilities Management		
			Westlake Reed Leskosky	One East Camelback Road Suite 690 Phoenix, Arizona 85012 www.WRLdesign.com	 <div>11031 SOUTH PINES PEAK DRIVE #202 PARKER, COLORADO 80138 PH: 303.643-5522 WWW.AES-GRP.COM</div>		Building Number SITE			
						Approved: Project Director BRAD SANDOVAL - COR VA PROGRAM MANAGER PHONE: 602-277-5551 x7349	Location PHOENIX, ARIZONA		Drawing Number C102	
							Date NOVEMBER 2014		Checked RD	Drawn CDL
Revisions:	Date						Dwg. 3 of 6	 Department of Veterans Affairs		



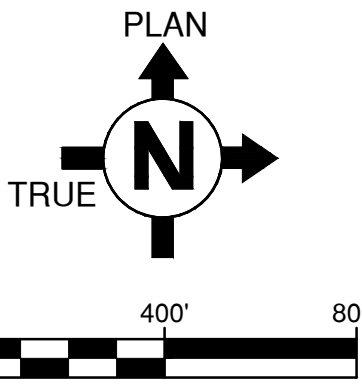
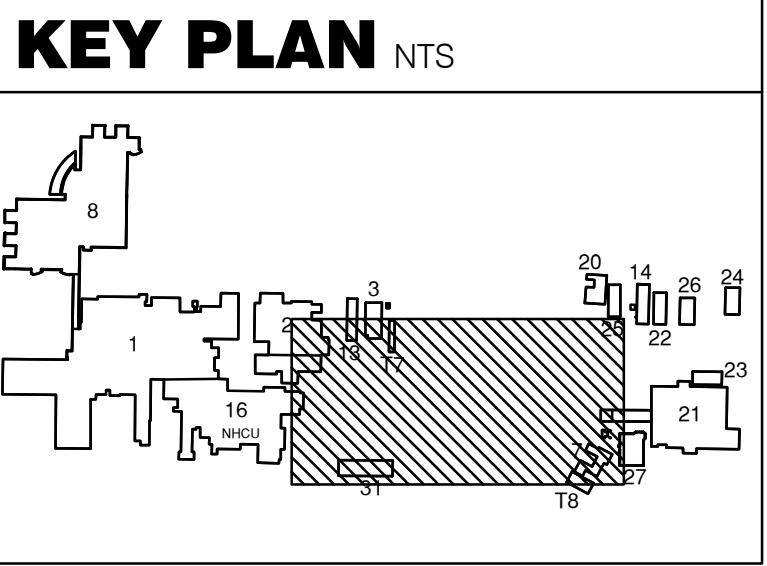
GENERAL NOTES THIS SHEET

1. THE CONTRACTOR IS RESPONSIBLE FOR ESTABLISHING LINE AND GRADE, IN CONFORMANCE WITH THE INFORMATION SHOWN ON THE PLANS FOR ALL FACILITIES TO BE CONSTRUCTED. THIS INCLUDES RESTORING TO THEIR ORIGINAL LINE AND GRADE ALL SITE IMPROVEMENTS THAT ARE REMOVED AND REPLACED AS PART OF THIS PROJECT. THE COR MAY, FROM TIME TO TIME, CHECK THE LINE AND GRADE OF COMPLETED SECTIONS OF THE WORK OR SECTION OF THE WORK IN PROGRESS. THIS, HOWEVER, IN NO WAY RELIEVES THE CONTRACTOR OF HIS RESPONSIBILITY IN ESTABLISHING THE LINE AND GRADE OF THE WORK IN CONFORMANCE WITH THE PLANS.
2. EXISTING INFORMATION SHOWN ON THE DRAWINGS HAS BEEN TAKEN FROM OWNER FURNISHED DRAWINGS AND LIMITED FIELD OBSERVATIONS. AES GROUP, INC. IS NOT RESPONSIBLE FOR THE ACCURACY OF ANY OWNER-PROVIDED INFORMATION OR THE ADEQUACY, SAFETY, AND CONFORMANCE TO CURRENT PREVAILING CODES OF ANY WORK SHOWN AS EXISTING ON THESE DRAWINGS.
3. EXISTING UTILITIES SHOWN ARE BASED ON THE BEST INFORMATION AVAILABLE TO THE ENGINEER. PRIOR TO EXCAVATING, THE CONTRACTOR SHALL FIELD LOCATE (INCLUDING DEPTHS) BY POT-HOLING ALL EXISTING UTILITIES WHICH MAY CONFLICT WITH THE PROPOSED CONSTRUCTION. FIBER OPTIC AND BURIED PHONE LINES SHALL BE EXPOSED BY POT-HOLING.
4. CONTRACTOR IS RESPONSIBLE TO LOCATE ALL UTILITY LINES PRIOR TO ANY EXCAVATION, PROTECT FROM DAMAGE, AND CERTIFY THE REPAIR OF ANY DAMAGED ITEMS.
5. THE CONTRACTOR SHALL PROVIDE THE OWNER AND ENGINEER WITH A FIELD SHEET INDICATING THE LOCATION AND DEPTH OF ALL UTILITIES VERIFIED BY POT-HOLING WITHIN 2 BUSINESS DAYS OF COMPLETING THE POT-HOLING AND PRIOR TO COMMENCING WORK IN THE VICINITY OF UTILITIES VERIFIED BY POT-HOLING.
6. WHEN THE CONTRACTOR DISCOVERS ANY CONFLICT BETWEEN THE DESIGN LOCATION OF WORK UNDER THIS CONTRACT AND AN EXISTING UTILITY HE SHALL NOTIFY THE COR IMMEDIATELY.
7. IF THE CONTRACTOR ENCOUNTERS ANY UNDOCUMENTED LINES, THE CONTRACTOR SHALL IMMEDIATELY STOP WORK IN THE AREA OF THE LINE AND NOTIFY THE COR SO THAT ANY CONFLICTS CAN BE MITIGATED.
8. ADJACENT LANDSCAPE AND STRUCTURES SHALL BE PROTECTED FROM DAMAGE BY THE CONTRACTOR. CONTRACTOR SHALL CORRECT OR RESTORE SUCH DAMAGE AT CONTRACTOR'S EXPENSE.
9. TREE ROOTS ENCOUNTERED IN ANY EXCAVATION SHALL BE SAWS OFF AT THE SIDES OF THE EXCAVATION.
10. CONTRACTOR SHALL MINIMIZE CONSTRUCTION RELATED MUD AND DEBRIS ON SURFACES ADJACENT TO THE PROJECT SITE SUCH AS LANDSCAPE, STREETS, DRIVES, AND SIDEWALKS. (BY BEST MANAGEMENT PRACTICES)
11. EQUIPMENT AND MATERIALS NOT INCORPORATED IN PROJECT SCOPE SHALL NOT BE STORED OR STOCKED ON SITE. (UNLESS WRITTEN PERMISSION IS RECEIVED FROM VA)
12. TRENCHES AND OPEN EXCAVATIONS SHALL BE APPROPRIATELY MARKED AND PROTECTED BY THE CONTRACTOR. NO TRENCHES OR EXCAVATIONS SHALL REMAIN UNPROTECTED OVERNIGHT. CONTRACTOR SHALL PROVIDE PROTECTION SUFFICIENT TO MAINTAIN PUBLIC SAFETY, IN ACCORDANCE WITH THE VA AND OSHA REGULATIONS. (FENCES, BARRICADES, LIGHTS)
13. UTILITY TRENCHES SHALL BE SHORED IN ACCORDANCE WITH ARIZONA INDUSTRIAL COMMISSION REGULATIONS FOR EXCAVATION AND SHORING AND OSHA 29 CFR PART 1926.
14. CONTRACTOR IS RESPONSIBLE FOR CONTROL OF EROSION OF ALL AREAS OF CONSTRUCTION THROUGH THE USE OF SILT FENCE, STRAW BALE BARRIERS, GRAVEL SOCKS, ETC. (BMP)
15. THE CONTRACTOR SHALL ADHERE TO THE NOISE ORDINANCE OF THE VA.
16. THE CONTRACTOR SHALL ADHERE TO THE VA'S REQUIREMENTS FOR CONSTRUCTION PARKING AND SHALL REQUIRE THAT THEIR EMPLOYEES AND ALL SUB-TRADE EMPLOYEES PARK ONLY IN DESIGNATED AREAS. THE COR WILL ADVISE THE CONTRACTOR OF THESE REQUIREMENTS.
17. THE CONTRACTOR SHALL ADHERE TO THE VA'S CONSTRUCTION RULES OF CONDUCT IF SUCH EXISTS. A COPY OF WHICH IS AVAILABLE FROM THE COR.
18. CONTRACTOR IS REQUIRED TO GRADE AND REPAIR ALL STREET CUTS DAILY UNTIL REPAIRS ARE PAVED. ALL STREET CROSSINGS MUST BE REPAIRED WITHIN 10 DAYS OF LINE CERTIFICATION TESTING. WITH SPEC APPROVED GRAVEL BASE COURSE AND A MINIMUM OF 3" THICK COMPACT HOT MIX ASPHALT.
19. CONTRACTOR CAN EXPECT TO DO 50% OF THE PROJECT WORK AFTER PEAK HOSPITAL BUSINESS HOURS 7:00AM TO 5:30PM M-F


KEYNOTES THIS SHEET

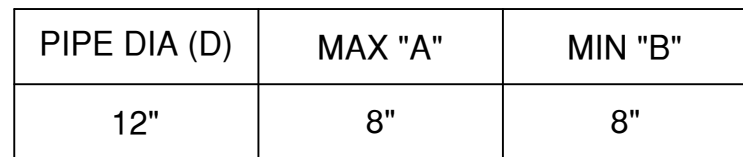
1. POINT OF CONNECTION.
2. FINAL LOCATION OF VAULT TBD. SEE FUTURE DENTAL BUILDING PROJECT FOR REFERENCE. PROJECT NUMBER 644-229. VA SHALL APPROVE FINAL LOCATION.
3. BASE BID WILL CONSIST OF ACCESS TO VALVES VIA VAULTS. DEDUCTIVE BID ALTERNATE WILL BE VALVE ACCESS VIA UNDERGROUND ISOLATION VALVES AND T-HANDLES IN SAME LOCATION.
4. MAIN LINE SHUTOFF VALVES AT THIS LOCATION INCLUDED IN BASE BID. DEDUCTIVE ALTERNATE AS NO MAIN LINE VALVES, ONLY BRANCH SHUTOFF VALVES.

- CWR CHILLED WATER RETURN
CWS CHILLED WATER SUPPLY
- ⊗ VALVE
- ┌ PIPE CAP



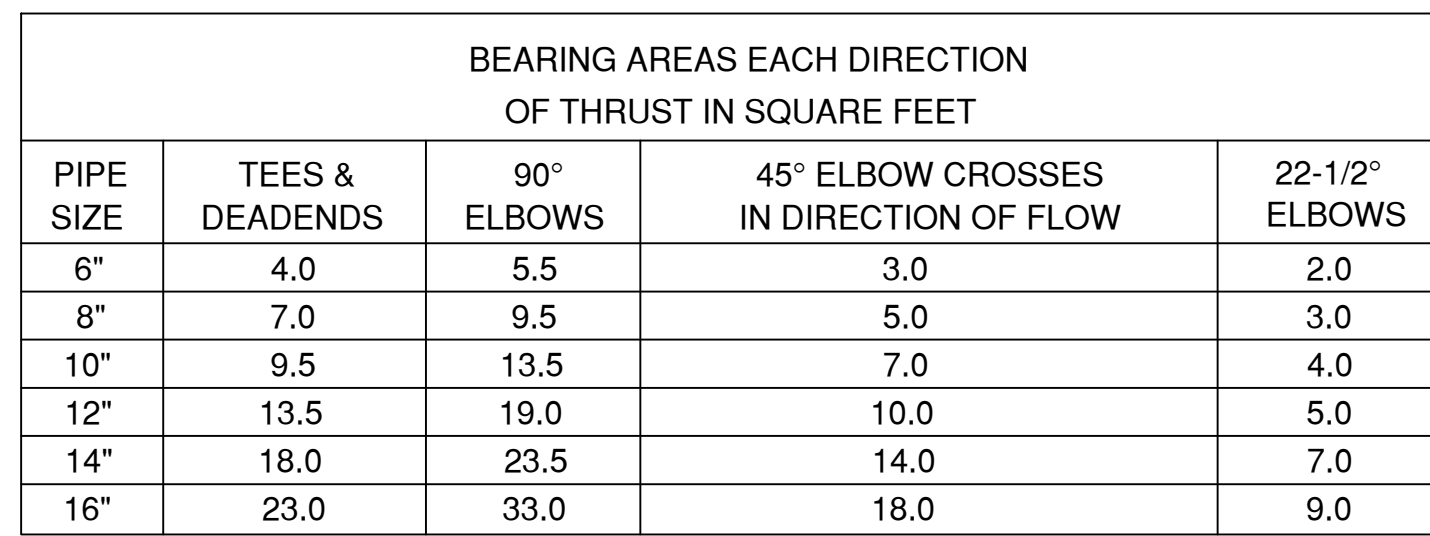
CONSTRUCTION DOCUMENTS

		CONSULTANT:	CONSULTANT:	ARCHITECT/ENGINEERS:	Drawing Title SITE PLAN ALTERNATIVE 3	Project Title UPGRADE CHILLED WATER SYSTEM	Project Number 644-14-005	Office of Construction and Facilities Management Department of Veterans Affairs		
			Westlake Reed Leskosky	One East Camelback Road Suite 690 Phoenix, Arizona 85012 www.WRLdesign.com	 <small>11031 SOUTH PINE PEAK DRIVE #202 PARKER, COLORADO 80138 PH: 303.641-5522 WWW.AES-GRP.COM</small>	Building Number SITE	Building Number C103			
						Approved: Project Director BRAD SANDOVAL - COR VA PROGRAM MANAGER PHONE: 602-277-5551 x7349	Location PHOENIX, ARIZONA		Drawing Number C103	
							Date NOVEMBER 2014		Checked RD	Drawn CDL
Revisions:	Date						Dwg. 4 of 6			

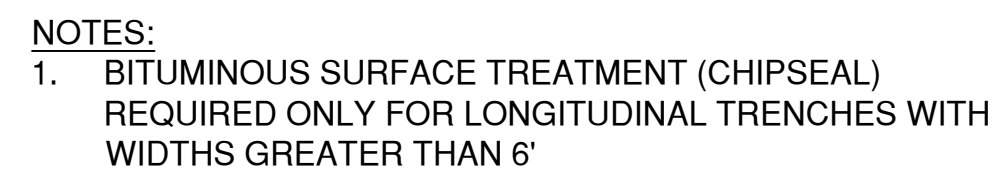


1. PROVIDE BEDDING IN ACCORDANCE WITH THE PROJECT SPECIFICATIONS.
2. BEDDING MATERIAL FOR SOIL SHALL BE 3 IN. LOOSE THICKNESS STRUCTURE BACKFILL CLASS 2.
3. BEDDING MATERIAL FOR ROCK SHALL BE 12 IN. LOOSE THICKNESS STRUCTURE BACKFILL CLASS 1.
4. EXPAND FOR THE REQUIRED NUMBER OF PIPES.
5. MAXIMUM TRENCH WIDTH "W" TAKEN AT TOP OF PIPE, $W = 2A + (N-1)B$ WHERE N IS THE NUMBER OF PIPES.

A circular pill with a horizontal score line. The number "1" is embossed above the line, and "C501" is embossed below the line.



C501 SCALE:NTS



1. MATERIAL AND COMPACTION REQUIREMENTS FOR PIPE BEDDING SHALL BE IN ACCORDANCE WITH THE SPECIFICATIONS FOR THE APPLICABLE UTILITY PIPE.
2. TRENCH BACKFILL SHALL COMMENCE 1 FOOT ABOVE THE TOP OF PIPE AND SHALL BE PER SECTION 31 20 11 EARTHMOVING.
3. BACKFILL COMPACTION REQUIREMENTS SHALL BE PER SECTION 31 20 11 EARTHMOVING.
4. ABC SHALL BE IN ACCORDANCE WITH THE REQUIREMENTS OF SECTION 31 20 11 EARTHMOVING.
5. PORTLAND CEMENT CONCRETE SHALL BE IN ACCORDANCE WITH THE REQUIREMENTS OF SECTION 32 05 23 CEMENT AND CONCRETE FOR EXTERIOR IMPROVEMENTS.
6. ASPHALTIC TACK MATERIAL SHALL BE IN ACCORDANCE WITH THE REQUIREMENTS OF SECTION 32 12 16 ASPHALTIC PAVING.
7. ASPHALTIC CONCRETE SHALL BE IN ACCORDANCE WITH THE REQUIREMENTS OF SECTION 32 12 16 ASPHALTIC PAVING FOR THE TYPE SPECIFIED.
8. BITUMINOUS SURFACE TREATMENT (CHIP SEAL) SHALL BE IN ACCORDANCE WITH THE REQUIREMENTS OF SECTION 32 12 16 ASPHALTIC PAVING FOR THE TYPE SPECIFIED.

SCALE:NTS

