

FORT ROSECRANS NATIONAL CEMETERY

PUBLIC INFORMATION CENTER

CONVERT ADMINISTRATION BUILDING TO PUBLIC INFORMATION CENTER (PIC)

VICINITY MAP

CEMETERY MAP

SITE LOCATION MAP

PROJECT DIRECTORY

NCA PROJECT MANAGER

DEPARTMENT OF VETERANS AFFAIRS
NATIONAL CEMETERY ADMINISTRATION
DESIGN AND CONSTRUCTION SERVICE
MARGARET.JENSEN@VA.GOV

ARCHITECT

JACOBS
3161 MICHELSON DRIVE SUITE 500
IRVINE, CA 92612
DAVID.FERRETTE@JACOBS.COM

CIVIL ENGINEER

JACOBS
1050 20TH STREET SUITE 200
SACRAMENTO CA, 95811
MARIE.SILVEIRA@JACOBS.COM

MSN V. ENGINEER

DEPARTMENT OF VETERANS AFFAIRS
MEMORIAL SERVICE NETWORK
(MSN #5)
CLIFFORD.SCHEM@VA.GOV

MECHANICAL ENGINEER

JACOBS
3161 MICHELSON DRIVE SUITE 500
IRVINE, CA 92612
RYAN.HEATHER@JACOBS.COM

COST ESTIMATOR

JACOBS
501 N. BROADWAY ST. LOUIS, MO 63102
TIMOTHY.HARTEIS@JACOBS.COM

NCA CEMETERY DIRECTOR

DEPARTMENT OF VETERANS AFFAIRS
FORT ROSECRANS NATIONAL CEMETERY
CABRILLO MEMORIAL DRIVE
SAN DIEGO, CA 92106
DOUGLAS.LEDBETTER@VA.GOV

PLUMBING ENGINEER

JACOBS
3161 MICHELSON DRIVE SUITE 500
IRVINE, CA 92612
RYAN.HEATHER@JACOBS.COM

ELECTRICAL ENGINEER

JACOBS
3161 MICHELSON DRIVE SUITE 500
IRVINE, CA 92612
SIMON.JEFF@JACOBS.COM

STRUCTURAL ENGINEER

JACOBS
3161 MICHELSON DRIVE SUITE 500
IRVINE, CA 92612
KAMRAN.HAGHIGHI@JACOBS.COM

ABBREVIATIONS

& @ #	AND AT NUMBER	E (E) EA	EAST EXISTING ELECTRICAL ELEV. E.P. EPA	IN INSUL INT.	INCH, INCHES INSULATION INTERIOR	S SC	SOUTH SEALED CONCRETE SCHED. SECTION
AABC	ASSOCIATED AIR BALANCE COUNCIL ABOVE	EQ	EQUAL EQUIPMENT	JT.	JOINT	SF,SQ,FT.	SQUARE FOOT
ABV.	AIR CONDITIONER	E.W.C.	ELECTRIC WATER COOLER	LAV.	LAVATORY	S.F.M.	STATE FIRE MARSHAL
A.C.,A/C	ABV FINISHED FLR	EXP	EXPOSED	LB.	POUND	SHT.	SHEET
AF.F.	AMERICAN GAS ASSOCIATION	EXT.	EXTERIOR	MAX.	MAXIMUM	SHTG.	SHEATHING
AGA	ASSOCIATION	EXIST.	EXISTING	MET,MTL	MECHANICAL	SIM.	SIMILAR
AL	ALUMINUM			MFG.	MANUFACTURE	SMACNA	SHEET METAL AND AIR CONDITIONING
ALUM	AMERICAN NATIONAL STANDARDS INSTITUTE			MFR	MANUFACTURER		CONTRACTOR'S NATIONAL ASSOCIATION, INC.
ANSI	ACCESS PANEL			MIN.	MINIMUM		SPECIFICATIONS
A.P.	APPROXIMATE	F.D.	FIRE EXTINGUISHER	M.R.	MOISTURE RESISTIVE		STAINLESS STEEL
APPROX.	AMERICAN REFRIGERATION INSTITUTE	F.H.C.	FIRE HOSE CABINET	M.S.	MOP SINK	STD	STUD
ARI	AMERICAN SOCIETY OF MECHANICAL ENGINEERS	FIN	FINISH	MTD.	MOUNTED	STL	STEEL
ASME	AMERICAN SOCIETY OF MECHANICAL ENGINEERS	FLR	FLOOR			STO.	STORAGE
ASTM	AMERICAN SOCIETY FOR TESTING AND MATERIALS	F.O.C.	FACE OF CONCRETE	(N)	NEW	STRUCT.	STRUCTURE
		F.O.C.M.U.	FACE OF CONCRETE MASONRY UNIT	N	NORTH	SUSP.	SUSPENDED
				NFPA	NATIONAL FIRE PROTECTION ASSOCIATION		
BLDG.	BUILDING	F.O.F.	FACE OF FINISH	NOM	NOMINAL	T	TREAD
BLK.	BLOCK	F.O.S.	FACE OF STUD	N.I.C.	NOT IN CONTRACT	THK.	THICKNESS
B.O.P.	BOTTOM OF PIPE	F.O.W.	FACE OF WALL	N.T.S.	NOT TO SCALE	T.O.S.	TOP OF STEEL
		FPM	FEET PER MINUTE			T.O.W.	TOP OF SCREEN
		FPS	FEET PER SECOND			TYP.	TOP OF WALL TYPICAL
		F.R.P.	FIBERGLASS REINFORCING PANELS	o/	OVER	UF	UNDER FLOOR
CD	CONDENSATE DRAIN	F.S.	FLOOR SINK	O.C.	ON CENTER	UG	UNDERGROUND
CFCI	CONTRACTOR FURNISH CONTRACTOR INSTALL	FT.	FOOT OR FEET	O.F.	OVERFLOW	UL	UNDERWRITER'S LABORATORIES, INC. UNLESS NOTED OTHERWISE UP THROUGH ROOF
CFF	CAP FOR FUTURE	FTG.	FOOTING	OFCL	OWNER FURNISH CONTRACTOR INSTALL	U.N.O.	
CFM	CUBIC FEET OF AIR PER MINUTE	F.V.	FIELD VERIFY	OSHA	OCCUPATIONAL SAFETY AND HEALTH ADMINISTRATION	UTR	
C.G.	CORNER GUARD	GA	GAUGE, GAGE	PA	PUBLIC ADDRESS	V.C.T.	VINYL COMPOSITE TILE
C.J.	CONTROL JOINT	GAL	GALLON	PD	PRESSURE DROP	VERT	VERTICAL
CLG.	CEILING	GALV.	GALVANIZED	PH.	PHONE, PHASE	V.V.	VA SUPPLIED & INSTALLED
CLR	CLEAR	GFCI	GOVERNMENT FURNISHED CONTRACTOR INSTALLED	PLBG.	PLUMBING	V.C.	VA SUPPLIED & CONTRACTOR INSTALLED
CMU	CONCRETE MASONRY UNIT	GFGI	GOVERNMENT FURNISHED CONTRACTOR INSTALLED	PLYWD.	PLYWOOD		
COL	COLUMN	GFI	GROUND FAULT INTERRUPTER	PNT	POINT OF CONNECTION		
CONC.	CONCRETE	GFI	GROUND FAULT INTERRUPTER	POD	POINT OF DISCONNECT		
CONT.	CONTINUOUS			POD	PRE-ENGINEERED METAL-BUILDING PROVIDED	W	WEST
CT	CERAMIC TILE			PEMB	POUND PER SQUARE INCH	W/W.	WITH WATER CLOSET
						WCO	WALL CLEANOUTS
DET.	DETAIL	GPM	GALLONS PER MINUTE	PROV'D	PROVIDED	WD	WOOD
D.F.	DRINKING FOUNTAIN	GR.	GRADE	PSI	POUNDS PER SQUARE INCH	W.H.	WATER HEATER
DFA	DOWN FROM ABOVE	GYP. BD.	GYP. BOARD	QT	QUARRY TILE	WNDW	WINDOW
DIA	DIAMETER	G.B.	GYP. BOARD			W/O	WITHOUT
DIM.	DIMENSION	HC	HEATING COIL	R	RADIUS	W.R.	WATER RESISTANT
DN.	DOWN	HGT	HEIGHT	RB	RUBBER BASE	WSC.T.	WAINSCOT
DOCS	DOCUMENTS	H.M.	HORIZONTAL	R.D.	REQUIRED	WT	WEIGHT
DR.	DOWN SPOUT	HOR.	HORSEPOWER	REQ	REQUIRED	WWF.	WELDED WIRE FABRIC
D.S.	DOWN THROUGH ROOF	HR.	HOUR	RES	ROOM		
DTR	DRAWING	HTG	HEATING	R.M.	REVOLUTIONS PER MINUTE		
DWG		HW	HOT WATER	RPM	RISER		
		HWR	HOT WATER RETURN	RSR			
		HZ	HERTZ				

CONSULTANTS:

ENVIRONMENTAL	HAZMAT
PAR ENVIRONMENTAL SERVICES, INC. 1906 21ST STREET SACRAMENTO, CA 95811 (916) 739-8356 MLMANIERY@YAHOO.COM JGMANIERY@YAHOO.COM	RGH ENVIRONMENTAL 2817 McCAW AVENUE IRVINE, CA 92614 (949)864-2025 DAVID.SILVERI@TERRACON.COM



ARCHITECT/ENGINEERS:

JACOBS

Jacobs Engineering Group Inc.
Consultants in Architecture, Engineering, Planning, and the Environment
Irvine Office
3161 Michelson Drive, Suite 500
Irvine, California 92612
(949) 224-7500 Fax (949) 224-7501

Drawing Title
COVER SHEET, DRAWING INDEX, ABBREVIATIONS AND SYMBOLS

Approved Project Director

-

-

-

Project Title
**FORT ROSECRANS NATIONAL CEMETERY
PUBLIC INFORMATION CENTER**

Location
**FORT ROSECRANS NATIONAL CEMETERY
CABRILLO MEMORIAL DR, SAN DIEGO, CA 92106**

Date
08/04/2015

Checked
DF

Drawn
EN

Project Number
892-CM3-034

Building Number
1001

Drawing Number
G1001

Dwg 01 of 35

**NATIONAL CEMETERY
ADMINISTRATION
DESIGN AND
CONSTRUCTION
SERVICE**



SHT.
NO.

GENERAL

1 G1001 COVER SHEET, DRAWING INDEX, ABBREVIATIONS AND SYMBOLS

2 G1002 CODE ANALYSIS AND LIFE SAFETY PLAN

CIVIL

3 C100 GENERAL NOTES, LEGEND, & ABBREVIATIONS

4 C101 CIVIL DETAILS

5 C102 CIVIL DETAILS

6 CS101 CIVIL PLAN

ARCHITECTURE

7 AS101 DEMOLITION PLAN AND FLOOR PLAN

8 AS201 EXTERIOR ELEVATIONS

9 AS301 BUILDING SECTION AND INTERIOR ELEVATIONS

10 AI101 REFLECTED CEILING PLAN

11 AE101 WALL TYPES

12 AE201 TYPICAL METAL STUD DETAILS

13 AE202 DETAILS

14 AE203 DOOR AND WINDOW DETAILS

15 AE301 ACCESSIBILITY STANDARDS

16 AF101 DOOR, WINDOW, AND FINISH SCHEDULES

STRUCTURAL

17 SS001 STRUCTURAL GENERAL NOTES & ABBREVIATIONS

18 SS101 FOUNDATION, DEMO AND ROOF FRAMING PLANS

19 SS501 STRUCTURAL DETAILS

20 SS502 STRUCTURAL DETAILS

MECHANICAL

21 MI001 MECHANICAL GENERAL NOTES, SYMBOLS AND ABBREVIATIONS

22 MH101 MECHANICAL FLOOR PLANS

23 MH201 MECHANICAL DETAILS

24 MH202 MECHANICAL DETAILS

25 ML601 MECHANICAL SCHEDULES

PLUMBING

26 PI001 PLUMBING GENERAL NOTES, SYMBOLS AND ABBREVIATIONS

27 PL101 PLUMBING FLOOR PLANS

28 PL601 PLUMBING SCHEDULES AND CALCULATIONS

ELECTRICAL

29 EI001 ELECTRICAL LEGEND, ABBREVIATIONS AND GENERAL NOTES

30 ES100 ELECTRICAL SITE PLAN

31 ED101 ELECTRICAL DEMOLITION PLAN

32 ES101 ELECTRICAL PLANS

33 EI601 ELECTRICAL SINGLE LINE DIAGRAM

34 EP701 ELECTRICAL SCHEDULE

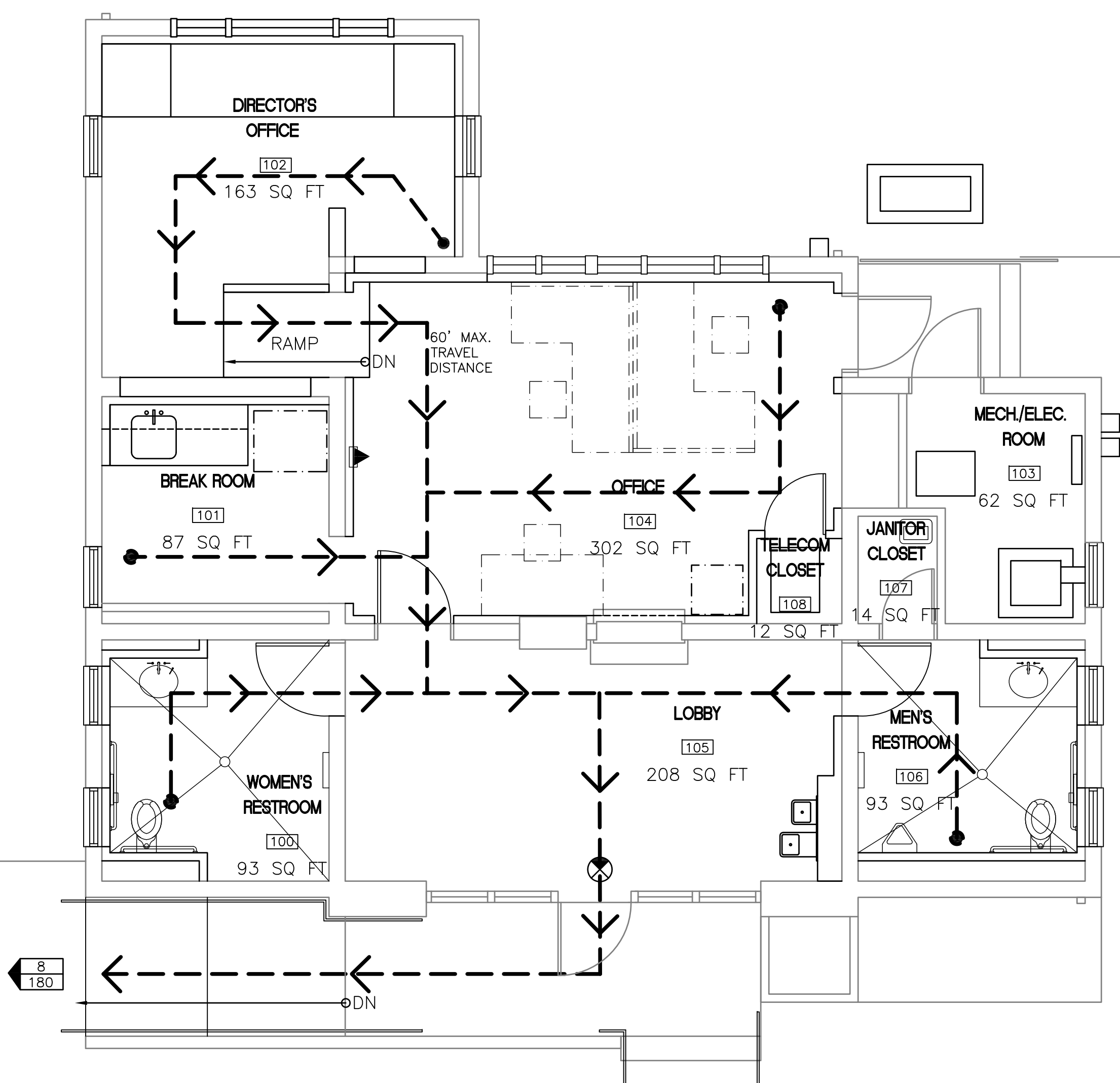
35 EP901 ELECTRICAL DETAILS

BID OPTIONS

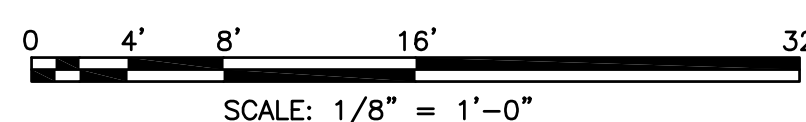
ALTERNATE NO. 1 - REMOVE SEPTIC TANK IN ITS ENTIRETY; CAP DISPOSAL LATERAL; BACKFILL WITH APPROVED MATERIAL; RESTORE LANDSCAPE COVER

ALTERNATE NO. 2 - DISCONNECT SEWER LATERAL FROM (E) SEPTIC TANK AND CONNECT TO FORCED MAIN LINE. WORK INCLUDES ABANDONING (E) SEPTIC TANK AND CONNECTING A 4" SS FROM THE PIC DOWN THE WEST PORTAL LOOP DRIVE TO A NEW PREPACKAGED GRINDER PUMP AT CABRILLO MEMORIAL DRIVE. FROM THE PUMP A NEW FORCED MAIN WILL BE PROVIDED IN CABRILLO MEMORIAL DRIVE NORTH TO CONNECT INTO THE NAVY'S (E) SEWER MANHOLE. SEE CS101 AND C101.

ALTERNATE NO. 3 - REMOVE 9 (E) EXTERIOR WINDOWS AND REPLACE WITH NEW WOOD WINDOWS. SEE AS101, AS201, AE203 AND AF101 FOR DETAILS.



1 LIFE SAFETY PLAN



CODE ANALYSIS





BUILDING 1001 (NON-SPRINKLERED)

1. (E) OCCUPANCY GROUP B (SECTION 304)
 - GROUP B (EXISTING): BUSINESS
2. MAXIMUM TRAVEL DISTANCE (TABLE 1016.2)
 - GROUP B: 200'
3. COMMON PATH OF TRAVEL (TABLE 1014.3)
 - GROUP B: 100'
4. (E) TYPE OF CONSTRUCTION
 - CONSTRUCTION TYPE V-B (EXISTING). (TABLE 601)
5. (E) BUILDING AREAS - 100 OCCUPANT LOAD (BUSINESS AREAS)
(TABLE 1004.1.2)
 - FIRST FLOOR
OCCUPIED AREA = 760 SF (DIRECTOR'S
OFFICE+LOBBY+BREAK+OFFICE)
8 MAXIMUM OCCUPANTS
6. ALLOWABLE HEIGHT AND AREA - CONSTRUCTION TYPE V-B (TABLE 503)
 - ALLOWABLE HEIGHT B OCCUPANCY: 40 FEET / 2 STORIES
 - ACTUAL EXISTING HEIGHT: 13'-8" ± / 1 STORY
 - ALLOWABLE AREA B OCCUPANCY: 9,000 SF (INCREASE FOR FRONTAGE NOT REQUIRED)
 - ACTUAL TOTAL GROSS EXISTING AREA: 1,217 ± SF
7. SPRINKLER SYSTEM (TABLE 503)
 - NOT REQUIRED

CODES AND STANDARDS

- ## 1. FEDERAL DESIGN STANDARDS
- THE PROJECT IS DESIGNED IN ACCORDANCE WITH THE FOLLOWING CRITERIA AND OTHER PERTINENT DATA TO CONFORM TO LATEST ADOPTED CODES AND STANDARDS:
- INTERNATIONAL BUILDING CODE (IBC), 2012
 - INTERNATIONAL PLUMBING CODE, 2012
 - INTERNATIONAL MECHANICAL CODE, 2012
 - INTERNATIONAL ELECTRICAL CODE, 2012
 - ARCHITECTURAL BARRIERS ACT (ABA) ACCESSIBILITY STANDARDS FOR FEDERAL FACILITIES
 - NFPA 101, 2012
- ## 2. NCA FACILITIES DESIGN GUIDE
- THE DEPARTMENT OF VETERANS AFFAIRS FOLLOWS THE NATIONAL CEMETERY ADMINISTRATION (NCA) FACILITIES DESIGN GUIDE.
- NCA DESIGN GUIDE: CHAPTERS 1–4 (JUNE 1999)
 - NCA DESIGN GUIDE: CHAPTER 5 (MARCH 2010)
 - A/E SUBMISSION REQ. FOR NATIONAL CEMETERY PROJECTS (PG–18–15 VOLUME D)
 - NCA MASTER CONSTRUCTION SPECIFICATIONS
 - DESIGN AND CONSTRUCTION PROCEDURES (PG–18–3)
 - ENVIRONMENTAL PLANNING GUIDANCE (PG–18–17)

LEGEND

- | | |
|---|---|
|  | COMMON PATH OF TRAVEL - MAXIMUM TRAVEL DISTANCE |
|  | EXITING SIGN |
|  | FIRE EXTINGUISHER |
|  | <u>CALCULATED NUMBER OF OCC. PER EXIT</u>
<u>TOTAL EXIT CAPACITY OF EGRESS</u> |

	-	CONSULTANTS:	
	-		
	-		
	-		
	-		
	-		
	-		
	-		
	-		
	-		
Revisions:	Date		



ARCHITECT/ENGINEERS:

JACOBS
Jacobs Engineering Group Inc.
Consultants in Architecture, Engineering,
Planning, and the Environment


Irvine Office
3161 Michelson Drive, Suite 500
Irvine, California 92612
(949) 224-7500 Fax (949) 224-7501

Drawing Title
CODE ANALYSIS AND LIFE SAFETY PLAN
-
Approved: Project Director
-
-
-

Project Title		
FORT ROSECRANS NATIONAL CEMETERY PUBLIC INFORMATION CENTER		
Location		
FORT ROSECRANS NATIONAL CEMETERY CABRILLO MEMORIAL DR, SAN DIEGO, CA 92106		
Date	Checked	Drawn
08/04/2015	DF	DF

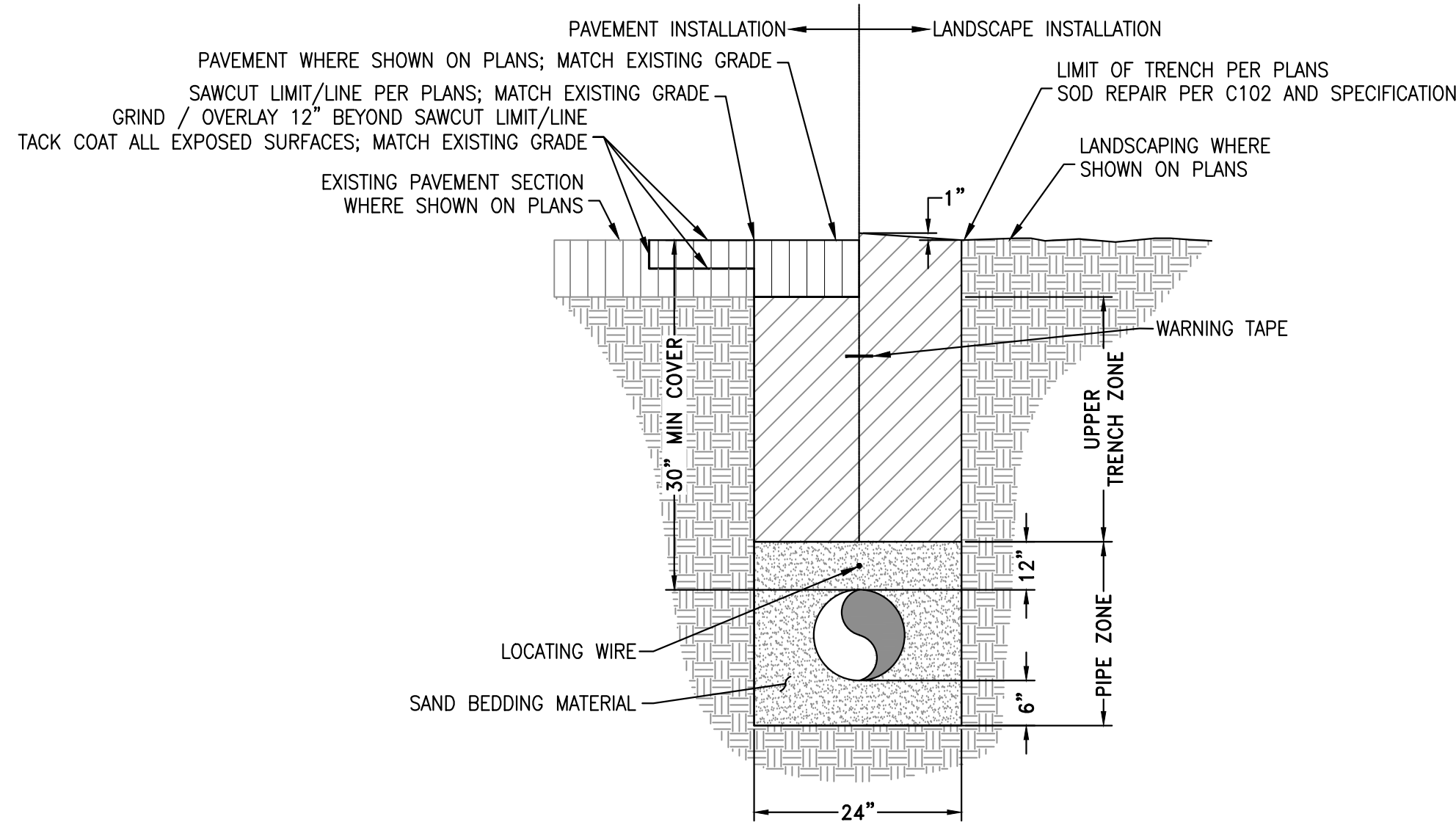
Project Number	892-CM3-034
Building Number	- 1001
Drawing Number	GI002
	Dwg 02 of 35

**NATIONAL CEMETERY
ADMINISTRATION
DESIGN AND
CONSTRUCTION
SERVICE**

 Department of
Veterans Affairs

three inches = one foot
one and one half inches = one foot
one inch = one foot
three quarters inch = one foot
one half inch = one foot
three eighths inch = one foot
one quarter inch = one foot
one eighth inch = one foot

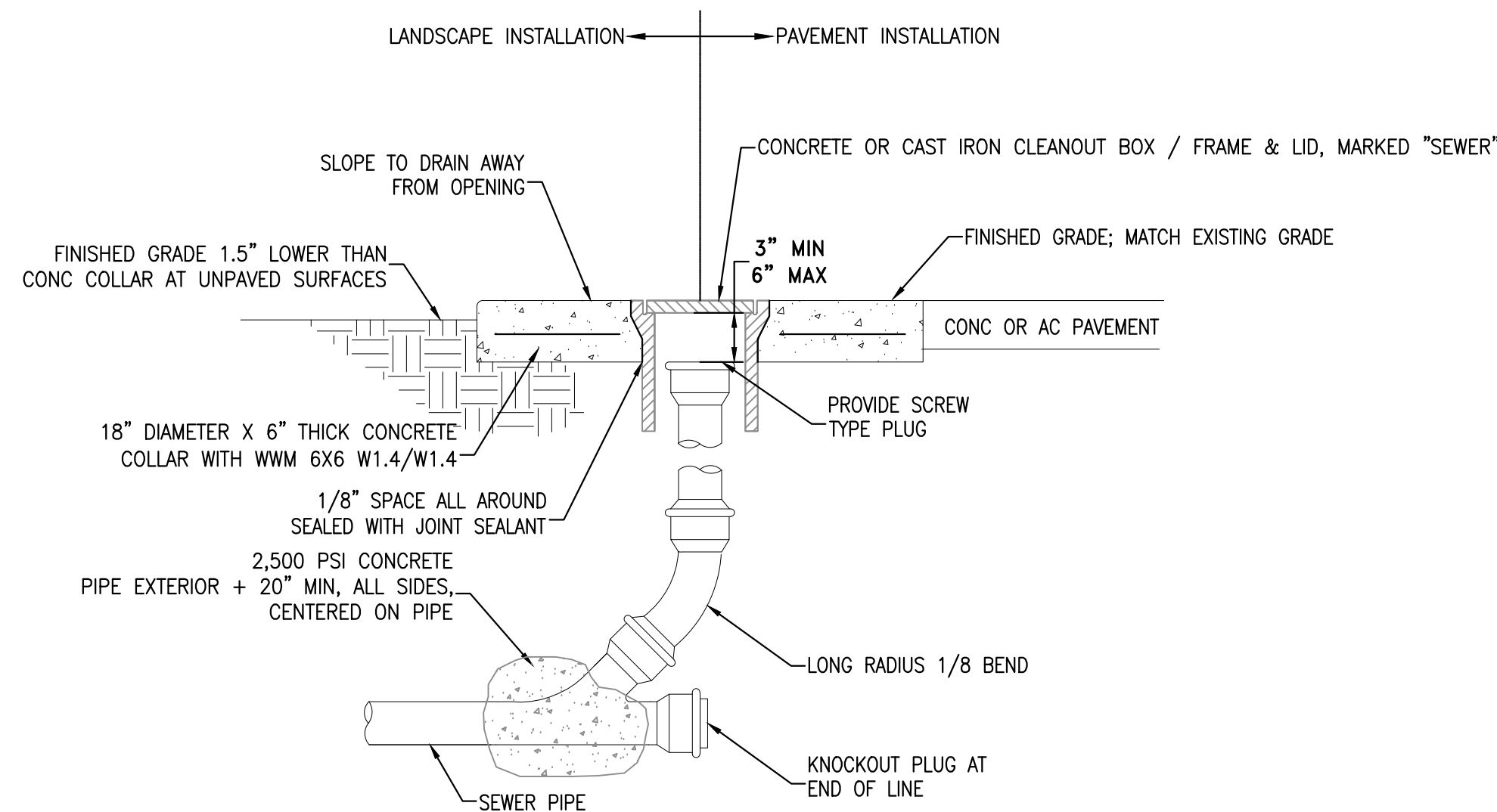
0 6 12 18 24 30 36 42 48 54 60 66 72 78 84 90 96 102 108 114 120 126 132 138 144 150 156 162 168 174 180 186 192 198 204 210 216 222 228 234 240 246 252 258 264 270 276 282 288 294 300 306 312 318 324 330 336 342 348 354 360 366 372 378 384 390 396 402 408 414 420 426 432 438 444 450 456 462 468 474 480 486 492 498 504 510 516 522 528 534 540 546 552 558 564 570 576 582 588 594 600 606 612 618 624 630 636 642 648 654 660 666 672 678 684 690 696 702 708 714 720 726 732 738 744 750 756 762 768 774 780 786 792 798 804 810 816 822 828 834 840 846 852 858 864 870 876 882 888 894 900 906 912 918 924 930 936 942 948 954 960 966 972 978 984 990 996 1000



- NOTES:
- UNLESS OTHERWISE NOTED OR SPECIFIED, MATERIALS AND INSTALLATION SHALL BE PER CALTRANS STANDARD SPECIFICATIONS, LATEST EDITION, REQUIREMENTS.
 - WHERE EXISTING PAVEMENT IS PORTLAND CEMENT CONCRETE, AND TRENCH SAW CUT WILL BE WITHIN 30" OF EXISTING CONCRETE JOINT, REMOVE AND REPLACE CONCRETE TO JOINT. MATCH EXISTING FINISH, AND THICKNESS, MINIMUM THICKNESS 6".

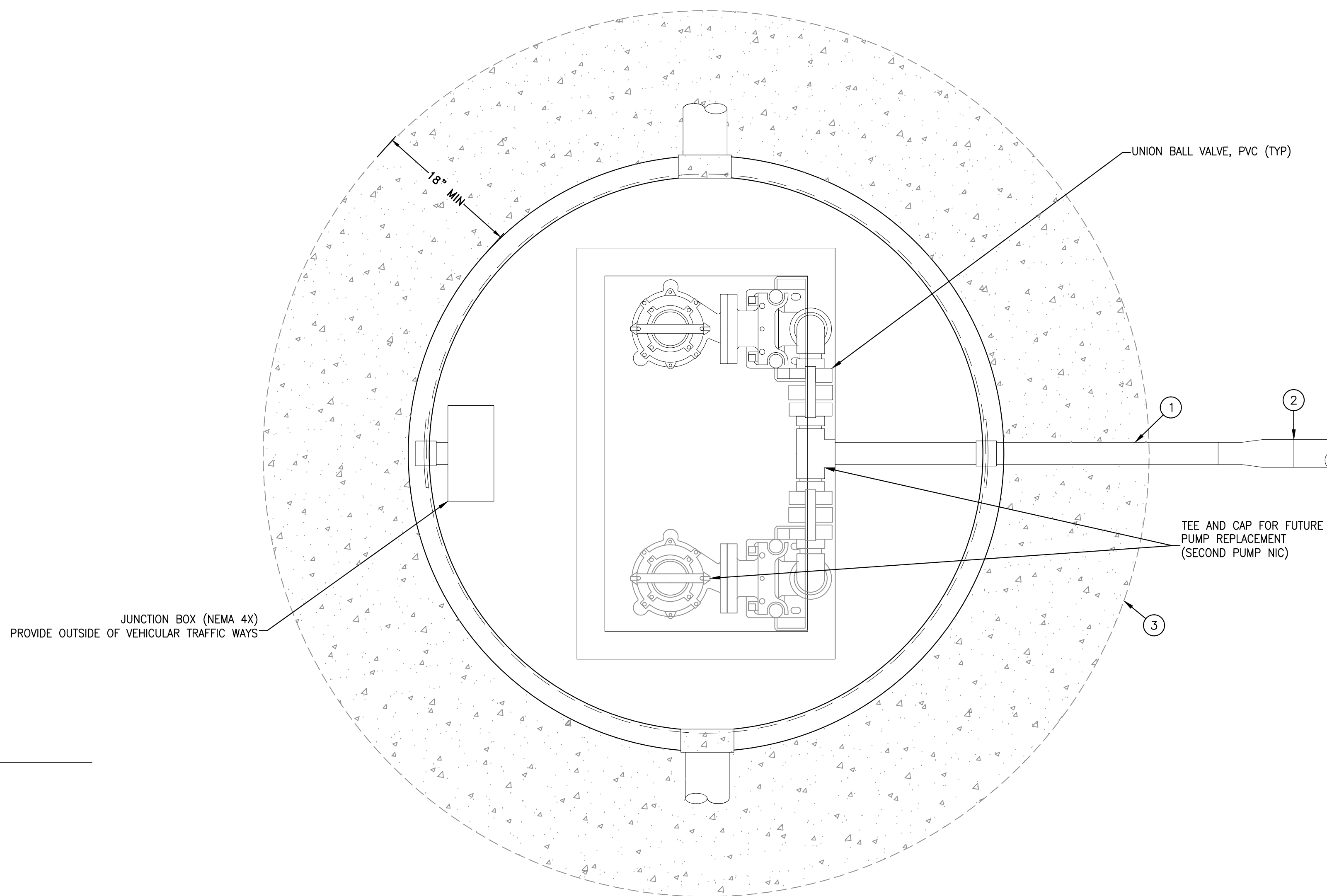
C1 ALTERNATE 2 SEWER TRENCH

NOT TO SCALE



E1 ALTERNATE 2 SEWER CLEANOUT TO GRADE

NOT TO SCALE



- NOTES:
- REFER TO CIVIL AND PLUMBING PLANS FOR ADDITIONAL INFORMATION WHICH SHALL BE REVIEWED IN DEVELOPING DESIGN OF SEWER PUMP AND FORCE MAIN SYSTEM.
 - FITTINGS ARE TO BE DETERMINED FROM PLAN LAYOUT/ROUTE AND SHALL BE INCLUDED IN HEAD/LOSS CALCULATIONS.
 - SEWER PUMP AND FORCE MAIN SYSTEM ARE CONTRACTOR DELEGATED DESIGN.
 - VELOCITY AT FLOW DESIGN POINT SHALL BE BETWEEN 4 FPS AND 5 FPS.
 - MINIMUM VELOCITY OF 3 FPS AND MAXIMUM VELOCITY OF 5 FPS UNDER ALL OPERATING CONDITIONS.
 - COORDINATE DESIGN WITH EXISTING SEWER SYSTEM FOR SIZE, LOCATION, MATERIAL, AND INVERT.

KEY NOTES

- SDR9 HDPE X 2" MNPT SS TRANSITION FITTING (SIZE PER CONTRACTOR DELEGATED DESIGN)
- SDR9 HDPE PIPE (SIZE PER CONTRACTOR DELEGATED DESIGN)
- 4,000 PSI CONCRETE BALLAST ANCHOR
- BURY ELECTRICAL CONDUIT 24" MIN BELOW GRADE AND ENCASE IN RED CONCRETE.

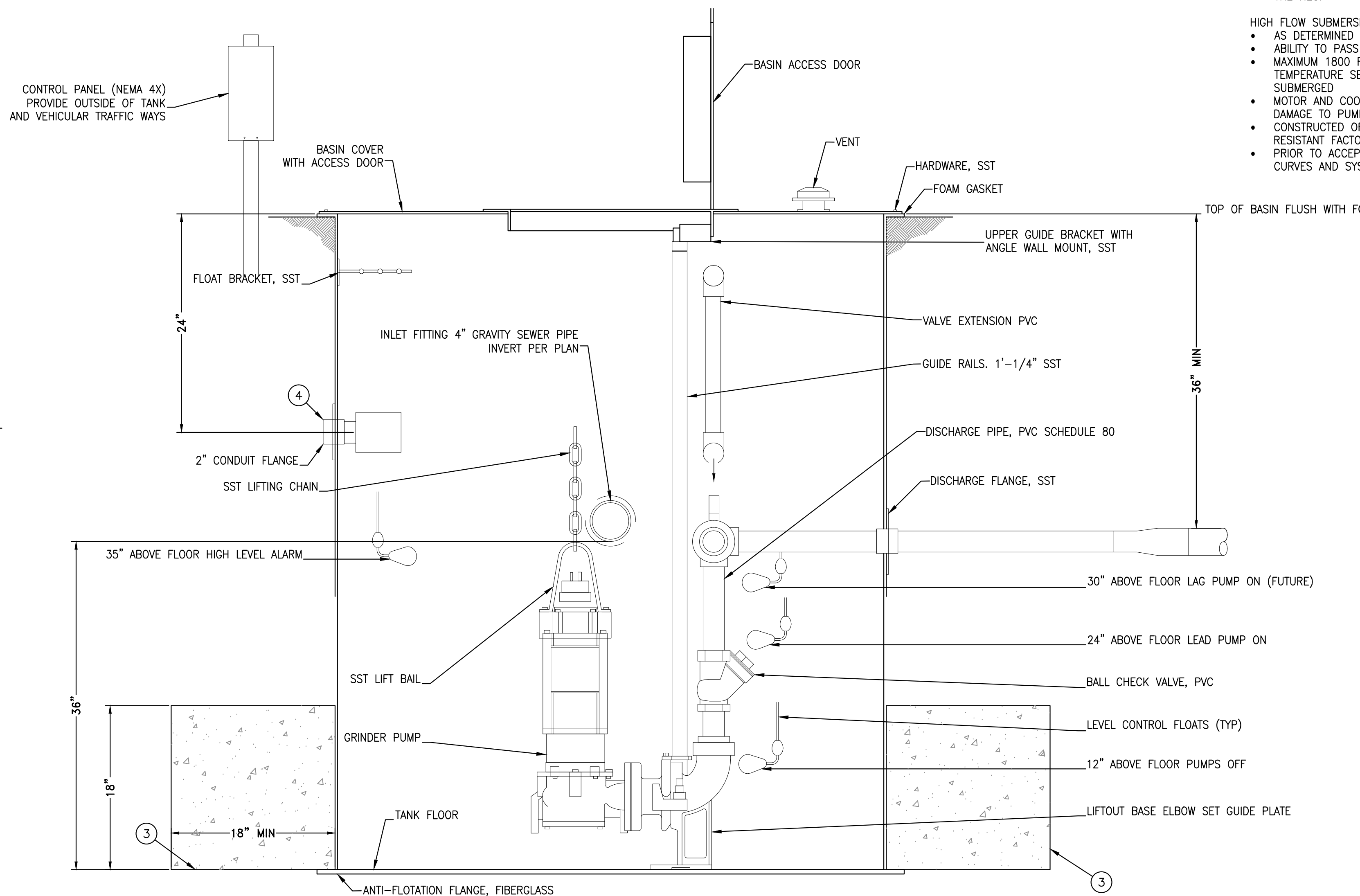
LIFT STATION NOTES

- FIBERGLASS TANK
- MINIMUM: 36" DIAMETER X HEIGHT AS REQUIRED TO ACCOMMODATE INVERTS AND ALARMS, SUITABLE FOR MAXIMUM PUMP CYCLING OF FIVE TIMES PER HOUR AND EMERGENCY STORAGE CAPACITY OF A MINIMUM OF 60 MINUTES AT PEAK FLOW CONDITIONS; USE PEAKING FACTOR OF 2.0.
 - (2) EACH 4" INLETS FOR GRAVITY SEWER PIPE, FIELD INSTALLED AS SHOWN ON PLAN (ONE FROM PIC, ONE STUB FOR POTENTIAL FUTURE CONNECTION)
 - ALUMINUM HATCH ACCESS DOOR, LOCKABLE, WITH LOCK AND KEY PROVIDED TO COR
 - VENT
 - STAINLESS STEEL GUIDE RAILS
 - STAINLESS STEEL RETRIEVAL CHAIN
 - INTERNAL PIPING
 - PIPE SUPPORTS, BRACKETS, AND ALL OTHER EQUIPMENT AND FASTENERS SHALL BE STAINLESS STEEL
 - SYSTEM SHALL CONTAIN ODOR CONTROL AND BE SUITABLE FOR OUTDOOR INSTALLATIONS
 - ALL ELECTRICAL EQUIPMENT, MOTORS, CONTROLS, WIRING, AND CONDUITS WITHIN THE WELL SHALL BE SUITABLE FOR HAZARDOUS AREA CLASS 1 DIVISION 2 IN ACCORDANCE WITH NEC ARTICLE 501

CONTROL PANEL

- NEMA 4X PANEL
- STANDARD PUMP CONTROL PANEL WITH LEAD-LAG FEATURE
- 3-PHASE 480 VOLT OPERATION FOR MOTOR AS SELECTED
- ALARM LIGHT
- TERMINALS, BREAKERS, FUSES
- CHEMICAL RESISTANT ELECTRICAL CABLE(S) SHALL BE SPLICED AT A JUNCTION BOX LOCATED 36 INCHES ABOVE WET WELL ROOF AND SHALL MEET ALL PROVISIONS OF THE NEC.

- HIGH FLOW SUBMERSIBLE NON-CLOG GRINDER PUMPS
- AS DETERMINED BY CONTRACTOR DELEGATED DESIGN
 - ABILITY TO PASS 1 INCH DIAMETER SPHERE
 - MAXIMUM 1800 RPM EXPLOSION-PROOF SUBMERSIBLE MOTOR WITH MOISTURE AND TEMPERATURE SENSORS; UL OR FM EXPLOSION-PROOF RATING WITHOUT BEING SUBMERGED
 - MOTOR AND COOLING RATING SUITABLE TO RUN DRY FOR 15 MINUTES WITHOUT DAMAGE TO PUMP
 - CONSTRUCTED OF CORROSION RESISTANT MATERIALS AND PROVIDED WITH CORROSION RESISTANT FACTORY COATING
 - PRIOR TO ACCEPTANCE, PUMP TESTS SHALL BE PERFORMED TO VERIFY PUMP CURVES AND SYSTEM HEAD CURVES



F5 ALTERNATE 2 PREPACKAGED GRINDER PUMP STATION

NOT TO SCALE

						Project Number 892-CM3-034		NATIONAL CEMETERY ADMINISTRATION DESIGN AND CONSTRUCTION SERVICE	
						Building Number 1001			
						Drawing Number C101		Dwg. 4 of 35	
								Department of Veterans Affairs	

CONSULTANTS:		ARCHITECT/ENGINEERS:		Drawing Title CIVIL DETAILS		Project Title FORT ROSECRANS NATIONAL CEMETERY PUBLIC INFORMATION CENTER		Project Number 892-CM3-034		NATIONAL CEMETERY ADMINISTRATION DESIGN AND CONSTRUCTION SERVICE	
								Building Number 1001			
						Approved Project Director		Drawing Number C101		Dwg. 4 of 35	
										Department of Veterans Affairs	

ENVIRONMENTAL		HAZMAT	
PAR ENVIRONMENTAL SERVICES, INC.		TERRACON CONSULTANTS INC	
1906 21ST STREET		2817 MCGAW AVENUE	
SACRAMENTO, CA 95811		IRVINE, CA 92614	
(916) 739-8356		(949) 864-2025	
MLMANIERI@YAHOO.COM		DAVID.SILVERI@TERRACON.COM	
JGMANIERI@YAHOO.COM			

REGISTERED PROFESSIONAL ENGINEER		No. 71539		EXP. 12-31-15		CIVIL	
MARK E. SILVERI		David Silveri					
STATE OF CALIFORNIA							

JACOBS		No. 71539		EXP. 12-31-15		CIVIL	
Jacobs Engineering Group Inc.		David Silveri					
Consultants in Architecture, Engineering, Planning, and the Environment							
Irvine Office							
3161 Michelson Drive, Suite 500							
Irvine, California 92612							
(949) 224-7500							
Fax (949) 224-7501							

Project Number 892-CM3-034		Drawing Number 1001	
Building Number 1001		Drawing Number C101	
Location FORT ROSECRANS NATIONAL CEMETERY CABRILLO MEMORIAL DR, SAN DIEGO, CA 92108		Dwg. 4 of 35	
Date 8/4/2015		Checked MS	
		Drawn TT	

Project Title FORT ROSECRANS NATIONAL CEMETERY PUBLIC INFORMATION CENTER		Drawing Number C101	
Location FORT ROSECRANS NATIONAL CEMETERY CABRILLO MEMORIAL DR, SAN DIEGO, CA 92108		Dwg. 4 of 35	
Date 8/4/2015		Checked MS	
		Drawn TT	

Project Number 892-CM3-034		Drawing Number 1001	
Building Number 1001		Drawing Number C101	
Location FORT ROSECRANS NATIONAL CEMETERY CABRILLO MEMORIAL DR, SAN DIEGO, CA 92108		Dwg. 4 of 35	
Date 8/4/2015		Checked MS	
		Drawn TT	

Project Title FORT ROSECRANS NATIONAL CEMETERY PUBLIC INFORMATION CENTER		Drawing Number C101	
Location FORT ROSECRANS NATIONAL CEMETERY CABRILLO MEMORIAL DR, SAN DIEGO, CA 92108		Dwg. 4 of 35	
Date 8/4/2015		Checked MS	
		Drawn TT	

Project Number 892-CM3-034		Drawing Number 1001	
Building Number 1001		Drawing Number C101	
Location FORT ROSECRANS NATIONAL CEMETERY CABRILLO MEMORIAL DR, SAN DIEGO, CA 92108		Dwg. 4 of 35	
Date 8/4/2015		Checked MS	
		Drawn TT	

Project Title FORT ROSECRANS NATIONAL CEMETERY PUBLIC INFORMATION CENTER		Drawing Number C101	
Location FORT ROSECRANS NATIONAL CEMETERY CABRILLO MEMORIAL DR, SAN DIEGO, CA 92108		Dwg. 4 of 35	
Date 8/4/2015		Checked MS	
		Drawn TT	

Project Number 892-CM3-034		Drawing Number 1001	
Building Number 1001		Drawing Number C101	
Location FORT ROSECRANS NATIONAL CEMETERY CABRILLO MEMORIAL DR, SAN DIEGO, CA 92108		Dwg. 4 of 35	
Date 8/4/2015		Checked MS	
		Drawn TT	

Project Title FORT ROSECRANS NATIONAL CEMETERY PUBLIC INFORMATION CENTER		Drawing Number C101	
Location FORT ROSECRANS NATIONAL CEMETERY CABRILLO MEMORIAL DR, SAN DIEGO, CA 92108		Dwg. 4 of 35	
Date 8/4/2015		Checked MS	
		Drawn TT	

Project Number 892-CM3-034		Drawing Number 1001	
Building Number 1001		Drawing Number C101	
Location FORT ROSECRANS NATIONAL CEMETERY CABRILLO MEMORIAL DR, SAN DIEGO, CA 92108		Dwg. 4 of 35	
Date 8/4/2015		Checked MS	
		Drawn TT	

Project Title FORT ROSECRANS NATIONAL CEMETERY PUBLIC INFORMATION CENTER		Drawing Number C101	
Location FORT ROSECRANS NATIONAL CEMETERY CABRILLO MEMORIAL DR, SAN DIEGO, CA 92108		Dwg. 4 of 35	
Date 8/4/2015		Checked MS	
		Drawn TT	

Project Number 892-CM3-034		Drawing Number 1001	
Building Number 1001		Drawing Number C101	
Location FORT ROSECRANS NATIONAL CEMETERY CABRILLO MEMORIAL DR, SAN DIEGO, CA 92108		Dwg. 4 of 35	
Date 8/4/2015		Checked MS	
		Drawn TT	

Project Title FORT ROSECRANS NATIONAL CEMETERY PUBLIC INFORMATION CENTER		Drawing Number C101	
Location FORT ROSECRANS NATIONAL CEMETERY CABRILLO MEMORIAL DR, SAN DIEGO, CA 92108		Dwg. 4 of 35	
Date 8/4/2015		Checked MS	
		Drawn TT	

Project Number 892-CM3-034		Drawing Number 1001	
Building Number 1001		Drawing Number C101	
Location FORT ROSECRANS NATIONAL CEMETERY CABRILLO MEMORIAL DR, SAN DIEGO, CA 92108		Dwg. 4 of 35	
Date 8/4/2015		Checked MS	
		Drawn TT	

Project Title FORT ROSECRANS NATIONAL CEMETERY PUBLIC INFORMATION CENTER		Drawing Number C101	
Location FORT ROSECRANS NATIONAL CEMETERY CABRILLO MEMORIAL DR, SAN DIEGO, CA 92108		Dwg. 4 of 35	
Date 8/4/2015		Checked MS	
		Drawn TT	

Project Number 892-CM3-034		Drawing Number 1001	
Building Number 1001		Drawing Number C101	
Location FORT ROSECRANS NATIONAL CEMETERY CABRILLO MEMORIAL DR, SAN DIEGO, CA 92108		Dwg. 4 of 35	
Date 8/4/2015		Checked MS	
		Drawn TT	

Project Title FORT ROSECRANS NATIONAL CEMETERY PUBLIC INFORMATION CENTER		Drawing Number C101	
Location FORT ROSECRANS NATIONAL CEMETERY CABRILLO MEMORIAL DR, SAN DIEGO, CA 92108		Dwg. 4 of 35	
Date 8/4/2015		Checked MS	
		Drawn TT	

Project Number 892-CM3-034		Drawing Number 1001	
Building Number 1001		Drawing Number C101	
Location FORT ROSECRANS NATIONAL CEMETERY CABRILLO MEMORIAL DR, SAN DIEGO, CA 92108		Dwg. 4 of 35	
Date 8/4/2015		Checked MS	
		Drawn TT	

Project Title FORT ROSECRANS NATIONAL CEMETERY PUBLIC INFORMATION CENTER		Drawing Number C101	
Location FORT ROSECRANS NATIONAL CEMETERY CABRILLO MEMORIAL DR, SAN DIEGO, CA 92108		Dwg. 4 of 35	
Date 8/4/2015		Checked MS	
		Drawn TT	

Project Number 892-CM3-034		Drawing Number 1001	
Building Number 1001		Drawing Number C101	
Location FORT ROSECRANS NATIONAL CEMETERY CABRILLO MEMORIAL DR, SAN DIEGO, CA 92108		Dwg. 4 of 35	
Date 8/4/2015		Checked MS	
		Drawn TT	

Project Title FORT ROSECRANS NATIONAL CEMETERY PUBLIC INFORMATION CENTER		Drawing Number C101	
Location FORT ROSECRANS NATIONAL CEMETERY CABRILLO MEMORIAL DR, SAN DIEGO, CA 92108		Dwg. 4 of 35	
Date 8/4/2015		Checked MS	
		Drawn TT	

Project Number 892-CM3-034		Drawing Number 1001	
Building Number 1001		Drawing Number C101	
Location FORT ROSECRANS NATIONAL CEMETERY CABRILLO MEMORIAL DR, SAN DIEGO, CA 92108		Dwg. 4 of 35	
Date 8/4/2015		Checked MS	
		Drawn TT	

Project Title FORT ROSECRANS NATIONAL CEMETERY PUBLIC INFORMATION CENTER		Drawing Number C101	
Location FORT ROSECRANS NATIONAL CEMETERY CABRILLO MEMORIAL DR, SAN DIEGO, CA 92108		Dwg. 4 of 35	
Date 8/4/2015		Checked MS	
		Drawn TT	

Project Number 892-CM3-034		Drawing Number 1001	
Building Number 1001		Drawing Number C101	
Location FORT ROSECRANS NATIONAL CEMETERY CABRILLO MEMORIAL DR, SAN DIEGO, CA 92108		Dwg. 4 of 35	
Date 8/4/2015		Checked MS	
		Drawn TT	

Project Title FORT ROSECRANS NATIONAL CEMETERY PUBLIC INFORMATION CENTER		Drawing Number C101	
Location FORT ROSECRANS NATIONAL CEMETERY CABRILLO MEMORIAL DR, SAN DIEGO, CA 92108		Dwg. 4 of 35	
Date 8/4/2015		Checked MS	
		Drawn TT	

Project Number 892-CM3-034		Drawing Number 1001	
Building Number 1001		Drawing Number C101	
Location FORT ROSECRANS NATIONAL CEMETERY CABRILLO MEMORIAL DR, SAN DIEGO, CA 92108		Dwg. 4 of 35	
Date 8/4/2015		Checked MS	
		Drawn TT	

Project Title FORT ROSECRANS NATIONAL CEMETERY PUBLIC INFORMATION CENTER		Drawing Number C101	
Location FORT ROSECRANS NATIONAL CEMETERY CABRILLO MEMORIAL DR, SAN DIEGO, CA 92108		Dwg. 4 of 35	
Date 8/4/2015		Checked MS	
		Drawn TT	

Project Number 892-CM3-034		Drawing Number 1001	
Building Number 1001		Drawing Number C101	
Location FORT ROSECRANS NATIONAL CEMETERY CABRILLO MEMORIAL DR, SAN DIEGO, CA 92108		Dwg. 4 of 35	
Date 8/4/2015		Checked MS	
		Drawn TT	

Project Title FORT ROSECRANS NATIONAL CEMETERY PUBLIC INFORMATION CENTER		Drawing Number C101	
Location FORT ROSECRANS NATIONAL CEMETERY CABRILLO MEMORIAL DR, SAN DIEGO, CA 92108		Dwg. 4 of 35	
Date 8/4/2015		Checked MS	
		Drawn TT	

Project Number 892-CM3-034		Drawing Number 1001	
Building Number 1001		Drawing Number C101	
Location FORT ROSECRANS NATIONAL CEMETERY CABRILLO MEMORIAL DR, SAN DIEGO, CA 92108		Dwg. 4 of 35	
Date 8/4/2015		Checked MS	
		Drawn TT	

Project Title FORT ROSECRANS NATIONAL CEMETERY PUBLIC INFORMATION CENTER		Drawing Number C101	
Location FORT ROSECRANS NATIONAL CEMETERY CABRILLO MEMORIAL DR, SAN DIEGO, CA 92108		Dwg. 4 of 35	
Date 8/4/2015		Checked MS	
		Drawn TT	

Project Number 892-CM3-034		Drawing Number 1001	
Building Number 1001		Drawing Number C101	
Location FORT ROSECRANS NATIONAL CEMETERY CABRILLO MEMORIAL DR, SAN DIEGO, CA 92108		Dwg. 4 of 35	
Date 8/4/2015		Checked MS	
		Drawn TT	

Project Title FORT ROSECRANS NATIONAL CEMETERY PUBLIC INFORMATION CENTER		Drawing Number C101	
Location FORT ROSECRANS NATIONAL CEMETERY CABRILLO MEMORIAL DR, SAN DIEGO, CA 92108		Dwg. 4 of 35	
Date 8/4/2015		Checked MS	
		Drawn TT	

Project Number 892-CM3-034		Drawing Number 1001	
Building Number 1001		Drawing Number C101	
Location FORT ROSECRANS NATIONAL CEMETERY CABRILLO MEMORIAL DR, SAN DIEGO, CA 92108		Dwg. 4 of 35	
Date 8/4/2015		Checked MS	
		Drawn TT	

Project Title FORT ROSECRANS NATIONAL CEMETERY PUBLIC INFORMATION CENTER		Drawing Number C101	
Location FORT ROSECRANS NATIONAL CEMETERY CABRILLO MEMORIAL DR, SAN DIEGO, CA 92108		Dwg. 4 of 35	
Date 8/4/2015		Checked MS	
		Drawn TT	

Project Number 892-CM3-034		Drawing Number 1001	
Building Number 1001		Drawing Number C101	
Location FORT ROSECRANS NATIONAL CEMETERY CABRILLO MEMORIAL DR, SAN DIEGO, CA 92108		Dwg. 4 of 35	
Date 8/4/2015		Checked MS	
		Drawn TT	

Project Title FORT ROSECRANS NATIONAL CEMETERY PUBLIC INFORMATION CENTER		Drawing Number C101	
Location FORT ROSECRANS NATIONAL CEMETERY CABRILLO MEMORIAL DR, SAN DIEGO, CA 92108		Dwg. 4 of 35	
Date 8/4/2015		Checked MS	
		Drawn TT	

Project Number 892-CM3-034		Drawing Number 1001	
Building Number 1001		Drawing Number C101	
Location FORT ROSECRANS NATIONAL CEMETERY CABRILLO MEMORIAL DR, SAN DIEGO, CA 92108		Dwg. 4 of 35	
Date 8/4/2015		Checked MS	
		Drawn TT	

Project Title FORT ROSECRANS NATIONAL CEMETERY PUBLIC INFORMATION CENTER		Drawing Number C101	
Location FORT ROSECRANS NATIONAL CEMETERY CABRILLO MEMORIAL DR, SAN DIEGO, CA 92108		Dwg. 4 of 35	
Date 8/4/2015		Checked MS	
		Drawn TT	

Project Number 892-CM3-034		Drawing Number 1001	
Building Number 1001		Drawing Number C101	
Location FORT ROSECRANS NATIONAL CEMETERY CABRILLO MEMORIAL DR, SAN DIEGO, CA 92108		Dwg. 4 of 35	
Date 8/4/2015		Checked MS	
		Drawn TT	

Project Title FORT ROSECRANS NATIONAL CEMETERY PUBLIC INFORMATION CENTER		Drawing Number C101	
Location FORT ROSECRANS NATIONAL CEMETERY CABRILLO MEMORIAL DR, SAN DIEGO, CA 92108		Dwg. 4 of 35	
Date 8/4/2015		Checked MS	
		Drawn TT	

Project Number 892-CM3-034		Drawing Number 1001	
Building Number 1001		Drawing Number C101	
Location FORT ROSECRANS NATIONAL CEMETERY CABRILLO MEMORIAL DR, SAN DIEGO, CA 92108		Dwg. 4 of 35	
Date 8/4/2015		Checked MS	
		Drawn TT	

Project Title FORT ROSECRANS NATIONAL CEMETERY PUBLIC INFORMATION CENTER		Drawing Number C101	
Location FORT ROSECRANS NATIONAL CEMETERY CABRILLO MEMORIAL DR, SAN DIEGO, CA 92108		Dwg. 4 of 35	
Date 8/4/2015		Checked MS	
		Drawn TT	

Project Number 892-CM3-034		Drawing Number 1001	
Building Number 1001		Drawing Number C101	
Location FORT ROSECRANS NATIONAL CEMETERY CABRILLO MEMORIAL DR, SAN DIEGO, CA 92108		Dwg. 4 of 35	
Date 8/4/2015		Checked MS	
		Drawn TT	

Project Title FORT ROSECRANS NATIONAL CEMETERY PUBLIC INFORMATION CENTER		Drawing Number C101	
Location FORT ROSECRANS NATIONAL CEMETERY CABRILLO MEMORIAL DR, SAN DIEGO, CA 92108		Dwg. 4 of 35	
Date 8/4/2015		Checked MS	
		Drawn TT	

Project Number 892-CM3-034		Drawing Number 1001	
Building Number 1001		Drawing Number C101	
Location FORT ROSECRANS NATIONAL CEMETERY CABRILLO MEMORIAL DR, SAN DIEGO, CA 92108		Dwg. 4 of 35	
Date 8/4/2015		Checked MS	
		Drawn TT	

Project Title FORT ROSECRANS NATIONAL CEMETERY PUBLIC INFORMATION CENTER		Drawing Number C101	
Location FORT ROSECRANS NATIONAL CEMETERY CABRILLO MEMORIAL DR, SAN DIEGO, CA 92108		Dwg. 4 of 35	
Date 8/4/2015		Checked MS	
		Drawn TT	

Project Number 892-CM3-034		Drawing Number 1001	
Building Number 1001		Drawing Number C101	
Location FORT ROSECRANS NATIONAL CEMETERY CABRILLO MEMORIAL DR, SAN DIEGO, CA 92108		Dwg. 4 of 35	
Date 8/4/2015		Checked MS	
		Drawn TT	

Project Title FORT ROSECRANS NATIONAL CEMETERY PUBLIC INFORMATION CENTER		Drawing Number C101	
Location FORT ROSECRANS NATIONAL CEMETERY CABRILLO MEMORIAL DR, SAN DIEGO, CA 92108		Dwg. 4 of 35	
Date 8/4/2015		Checked MS	
		Drawn TT	

Project Number 892-CM3-034		Drawing Number 1001	
Building Number 1001		Drawing Number C101	
Location FORT ROSECRANS NATIONAL CEMETERY CABRILLO MEMORIAL DR, SAN DIEGO, CA 92108		Dwg. 4 of 35	
Date 8/4/2015		Checked MS	
		Drawn TT	

Project Title FORT ROSECRANS NATIONAL CEMETERY PUBLIC INFORMATION CENTER		Drawing Number C101	
Location FORT ROSECRANS NATIONAL CEMETERY CABRILLO MEMORIAL DR, SAN DIEGO, CA 92108		Dwg. 4 of 35	
Date 8/4/2015		Checked MS	
		Drawn TT	

Project Number 892-CM3-034		Drawing Number 1001	
Building Number 1001		Drawing Number C101	
Location FORT ROSECRANS NATIONAL CEMETERY CABRILLO MEMORIAL DR, SAN DIEGO, CA 92108		Dwg. 4 of 35	
Date 8/4/2015		Checked MS	
		Drawn TT	

Project Title FORT ROSECRANS NATIONAL CEMETERY PUBLIC INFORMATION CENTER		Drawing Number C101	
Location FORT ROSECRANS NATIONAL CEMETERY CABRILLO MEMORIAL DR, SAN DIEGO, CA 92108		Dwg. 4 of 35	
Date 8/4/2015		Checked MS	
		Drawn TT	

Project Number 892-CM3-034		Drawing Number 1001	
Building Number 1001		Drawing Number C101	
Location FORT ROSECRANS NATIONAL CEMETERY CABRILLO MEMORIAL DR, SAN DIEGO, CA 92108		Dwg. 4 of 35	
Date 8/4/2015		Checked MS	
		Drawn TT	

Project Title FORT ROSECRANS NATIONAL CEMETERY PUBLIC INFORMATION CENTER		Drawing Number C101	
Location FORT ROSECRANS NATIONAL CEMETERY CABRILLO MEMORIAL DR, SAN DIEGO, CA 92108		Dwg. 4 of 35	
Date 8/4/2015		Checked MS	
		Drawn TT	

Project Number 892-CM3-034		Drawing Number 1001	
Building Number 1001		Drawing Number C101	
Location FORT ROSECRANS NATIONAL CEMETERY CABRILLO MEMORIAL DR, SAN DIEGO, CA 92108		Dwg. 4 of 35	
Date 8/4/2015		Checked MS	
		Drawn TT	

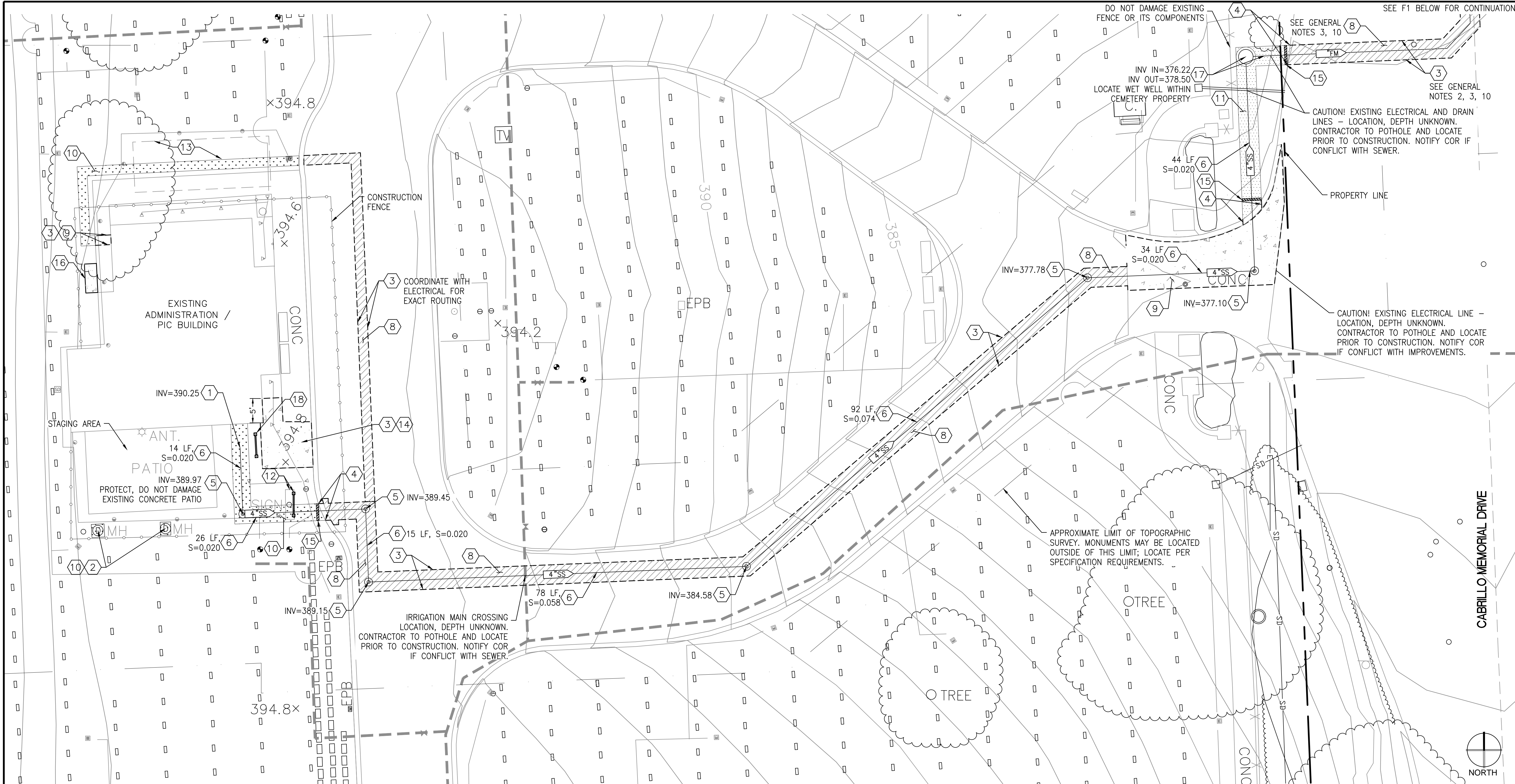
Project Title FORT ROSECRANS NATIONAL CEMETERY PUBLIC INFORMATION CENTER		Drawing Number C101	
Location FORT ROSECRANS NATIONAL CEMETERY CABRILLO MEMORIAL DR, SAN DIEGO, CA 92108		Dwg. 4 of 35	
Date 8/4/2015		Checked MS	
		Drawn TT	

Project Number 892-CM3-034		Drawing Number 1001	
Building Number 1001		Drawing Number C101	
Location FORT ROSECRANS NATIONAL CEMETERY CABRILLO MEMORIAL DR, SAN DIEGO, CA 92108		Dwg. 4 of 35	
Date 8/4/2015		Checked MS	
		Drawn TT	

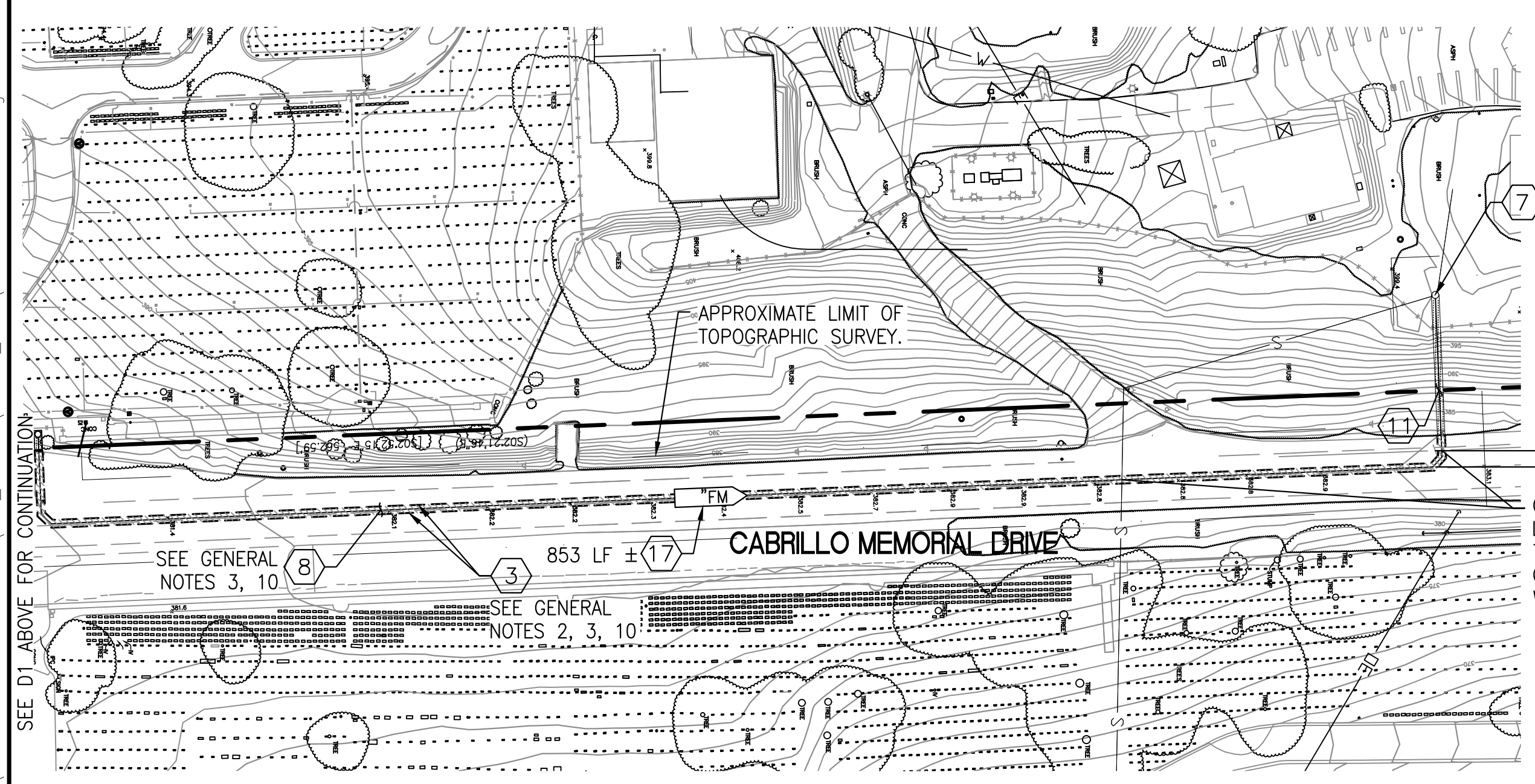
Project Title FORT ROSECRANS NATIONAL CEMETERY PUBLIC INFORMATION CENTER	
--	--



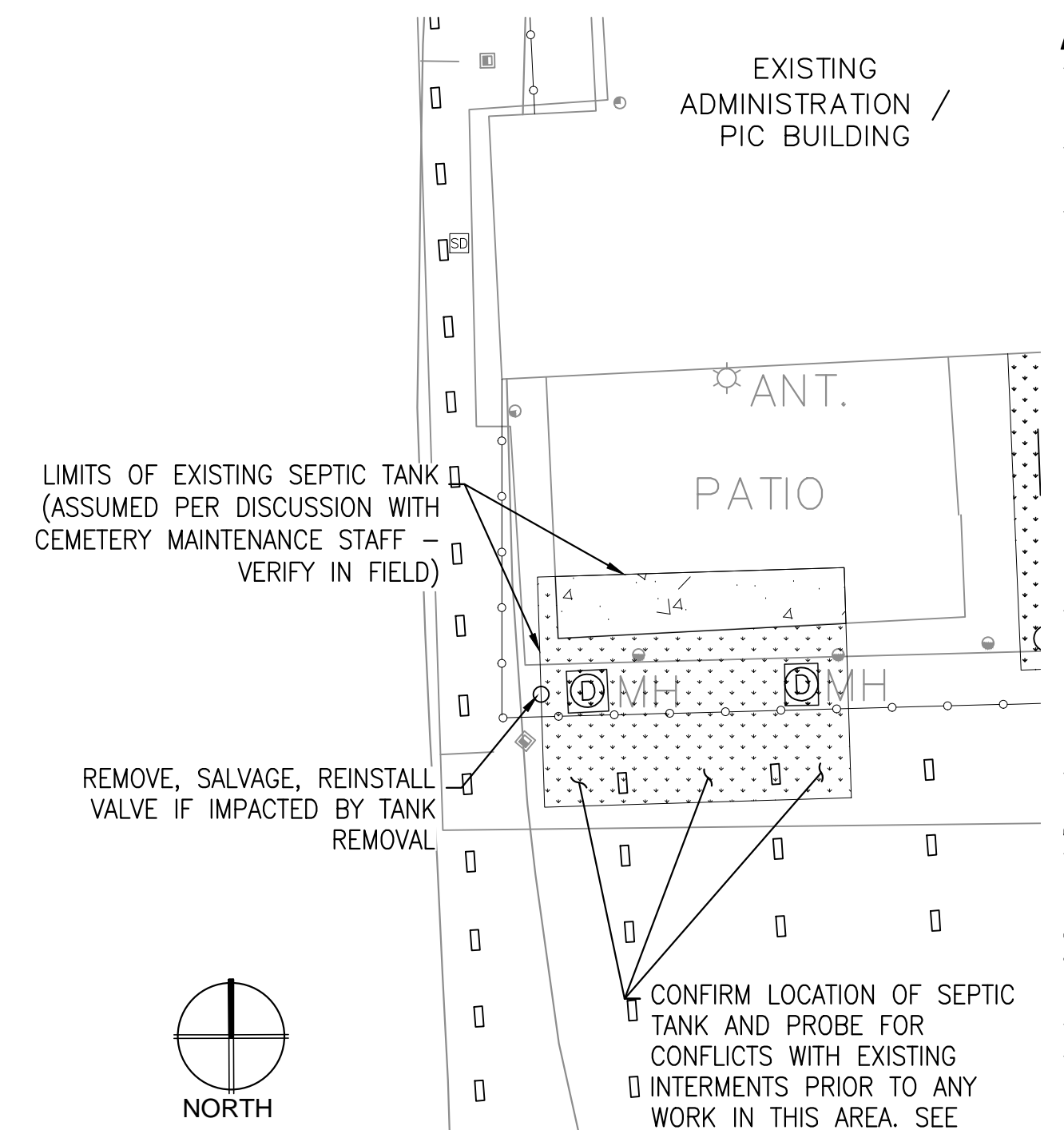
three inches = one foot
one and one half inches = one foot
one inch = one foot
three quarters inch = one foot
one half inch = one foot
three eighths inch = one foot
one quarter inch = one foot
one eighth inch = one foot



D1 ALTERNATE 2 - SEPTIC TANK DISCONNECTION AND GRAVITY SEWER INSTALLATION
SCALE: 1" = 10'



F1 ALTERNATE 2 - FORCE MAIN EXTENSION TO EXISTING MANHOLE
SCALE: 1" = 60'



F5 ALTERNATE 1 - REMOVE SEPTIC TANK
SCALE: 1" = 10'

- ### GENERAL NOTES
1. THE SCOPE OF CIVIL SITE WORK, ALTERNATE 2, IS TO DISCONNECT THE EXISTING SEWER LATERAL FROM THE EXISTING SEPTIC TANK AND CONNECT TO THE EXISTING FORCE MAIN SEWER IN CABRILLO MONUMENT DRIVE WITH NEW SEWER PIPE, INCLUDING ALL ASSOCIATED SITE DEMOLITION AND RESTORATION WORK AND OTHER MISCELLANEOUS WORK AS INDICATED. ABANDON THE EXISTING SEPTIC TANK PER SAN DIEGO CITY AND COUNTY REQUIREMENTS.
 2. PROVIDE TEMPORARY BYPASS FOR IMPACTS TO SEWER SYSTEM. BYPASS SHALL BE IN PLACE AND OPERATIONAL PRIOR TO ANY UTILITY SYSTEM WORK OR DISCONNECTION AND SHALL REMAIN IN SERVICE UNTIL THE UTILITY SYSTEM IS RECONNECTED AND OPERATIONAL.
 3. CONTRACTOR TO IDENTIFY AND OBTAIN ALL PERMITS REQUIRED FOR ABANDONMENT OF SEPTIC SYSTEM, CONSTRUCTION WITHIN CABRILLO MONUMENT DRIVE, AND ANY OTHER PERMITS WHICH MAY BE REQUIRED.
 4. ALL DEMOLISHED AND REMOVED MATERIALS AND PRODUCTS TO BE TRANSPORTED OFF SITE PER SPECIFICATIONS.
 5. NOTIFY THE CONTRACTING OFFICER AND COR OF ANY DISCREPANCIES BEFORE PROCEEDING WITH WORK.
 6. CONTRACTOR TO PROVIDE SITE TOPOGRAPHIC SURVEY PRIOR TO CONSTRUCTION. REFER TO SPECIFICATIONS FOR REQUIREMENTS.
 7. SEE ARCHITECTURAL, STRUCTURAL, MECHANICAL, ELECTRICAL, AND PLUMBING PLANS FOR ADDITIONAL INFORMATION.
 8. FIELD VERIFY ALL SITE CONDITIONS PRIOR TO CONSTRUCTION. ALL EXISTING CONDITIONS ARE BASED ON RECORD DRAWINGS PROVIDED BY THE GOVERNMENT. NO SITE INFORMATION HAS BEEN VERIFIED BY FIELD SURVEY. PLANS ARE ACCURATE ONLY TO THE DEGREE IMPLIED BY THE METHOD USED TO ESTABLISH EXISTING CONDITIONS.
 9. CONTACT UNDERGROUND SERVICE ALERT OF SOUTHERN CALIFORNIA AND NAVFAC BASE UTILITIES MARK-OUT A MINIMUM OF TWO (2) DAYS PRIOR TO BEGINNING WORK FOR UTILITY MARK-OUT. IN CASE OF ANY UTILITY-RELATED EMERGENCY, CONTACT UTILITIES DUTY DESK (619) 556-7349. COORDINATE AND SCHEDULE UTILITY TIE-INS AND CONNECTIONS AND MAKE CONNECTIONS IN THE PRESENCE OF A NAVFAC UTILITIES REPRESENTATIVE (UTILITY INTER-CONNECT SPECIALIST).
 10. EXISTING UTILITIES ARE BASED ON OWNER-SUPPLIED INFORMATION. CONTRACTOR SHALL VERIFY TYPE, SIZE, LOCATION, ETC OF ALL UTILITIES PRIOR TO CONSTRUCTION.
 11. REMOVE ALL IRRIGATION MAINS, LATERALS, HEADS, AND OTHER APPURTENANCES WITHIN WORK AREA. RE-INSTALL OR REPLACE IRRIGATION SYSTEM WITHIN WORK AREA.
 12. CONTRACTOR IS RESPONSIBLE FOR IMPLEMENTING ANY NECESSARY EROSION AND SEDIMENT CONTROL MEASURES AS REQUIRED BY THE SWRCB AND THE CITY AND COUNTY OF SAN DIEGO.
 13. CONTRACTOR IS RESPONSIBLE FOR PROVIDING STEEL TRENCH PLATES AND ANY OTHER MEASURES REQUIRED TO MAINTAIN ACCESS IN CABRILLO MONUMENT DRIVE.
 14. THERE ARE EXISTING ELECTRICAL UTILITIES IN THE WORK AREA WITH UNKNOWN LOCATIONS. USE EXTREME CAUTION IN ANY EXCAVATION.
 15. RESTORE PAVEMENT MARKINGS IN AREAS OF WORK TO MATCH EXISTING.

- ### KEYNOTES - BASE BID KEYNOTES - ALTERNATE 2
- 1. CONNECT NEW SEWER TO BUILDING LATERAL PER MANUFACTURER'S RECOMMENDATION. REFER TO PLUMBING FOR CONTINUATION.
 - 2. ABANDON SEPTIC TANK IN PLACE PER SAN DIEGO CITY AND COUNTY REQUIREMENTS. CONTRACT WITH CERTIFIED WASTE HAULER FOR TANK CLEANOUT. PROVIDE COPIES OF CERTIFICATION TO COR; PHOTOGRAPH AND FILL PER SAN DIEGO REQUIREMENTS. OBTAIN ALL PERMITS PRIOR TO WORK. PROVIDE TEMPORARY BYPASS FOR SEWER SYSTEM. BYPASS SHALL BE IN PLACE AND OPERATIONAL PRIOR TO ANY UTILITY SYSTEM WORK OR DISCONNECTION AND SHALL REMAIN IN SERVICE UNTIL THE UTILITY SYSTEM IS RECONNECTED AND OPERATIONAL. REMOVE ACCESS HOLE FRAME, COVER, AND AT LEAST 1 GRADE RING.
 - 3. SAWCUT EXISTING PAVEMENT TO A NEAT STRAIGHT LINE. REMOVE PAVEMENT AND BASE; DISPOSE OF OFF SITE. C1/C101.
 - 4. SAWCUT AND REMOVE CURB TO NEAREST JOINT, EA SIDE. CONSTRUCT NEW CONCRETE CURB; MATCH EXISTING GEOMETRY AND GRADE. A1/C102.
 - 5. CLEAN OUT TO GRADE. RIM TO BE FLUSH WITH ADJACENT GRADE. E1/C101.
 - 6. 4" SEWER PIPE. LENGTH, SLOPE AS INDICATED.
 - 7. CONNECT SEWER FORCE MAIN TO EXISTING MANHOLE. COORDINATE WITH NAVFAC. CAPACITY, SIZE, DEPTH, LOCATION UNKNOWN. CONTRACTOR DELEGATED DESIGN.
 - 8. ASPHALT PAVING: 3"AC / 12" AB. MATCH EXISTING GRADE. C1/C101.
 - 9. CONCRETE PAVING: 6" PCC / 6" AB W. NO. 4 BARS @ 18" O.C.. MATCH JOINTS TO EXISTING PATTERN BUT IN NO CASE GREATER THAN 10' EA WAY. DOWEL JOINTS WITH 18" L. NO. 8 BARS AT 12" O.C. MATCH EXISTING GRADE.
 - 10. NEATLY CUT AND REMOVE EXISTING TURF SOD. NEW TURF SOD TO MATCH EXISTING. MATCH EXISTING GRADE. REPAIR IRRIGATION; SEE NOTE 11. D1/C102.
 - 11. REMOVE EXISTING LANDSCAPE COVER MATERIALS TO ALLOW SEWER TRENCHING AND INSTALLATION. RESTORE TO EXISTING CONDITION.
 - 12. REMOVE EXISTING POST AND PANEL SIGN. INSTALL NEW SIGN (VISITOR INFORMATION). D5/C102.
 - 13. TEMPORARY MODULAR TRAILER FOR CEMETERY ADMINISTRATION AND PIC USE DURING CONSTRUCTION. REFER TO SPECIFICATIONS FOR REQUIREMENTS. RESTORE LAWN.
 - 14. RECONSTRUCT EXISTING CURB RAMP, LANDING, AND 5' MAXIMUM LENGTH OF BUILDING ACCESS RAMP TO MEET ADA-ABA SLOPE REQUIREMENTS. 4" PCC/PREPARED AND COMPACTED SUBGRADE WITH NO. 4 BARS AT 18" O.C. DOWEL JOINTS WITH 30" L. NO. 4 BARS AT 30" O.C.
 - 15. PROVIDE PLUG, 24" THICK, EXTENDING FULL WIDTH OF TRENCH BEDDING AND BACKFILL BETWEEN LANDSCAPE AND EDGE OF PAVEMENT.
 - 16. NEATLY CUT AND REMOVE EXISTING TURF SOD. INSTALL CONCRETE EQUIPMENT PAD PER STRUCTURAL PLAN AND DETAILS.
 - 17. PREPACKAGED GRINDER PUMP AND FORCE MAIN SYSTEM. CONTRACTOR DELEGATED DESIGN. REFER TO PLUMBING FOR SEWER LOADS (FIXTURE UNITS). COORDINATE WITH ELECTRICAL FOR POWER, FLOAT ALARMS, AND ALL OTHER REQUISITE COMPONENTS AND APPURTENANCES. F5/C101. PROVIDE RESTRAINT AT ALL BENDS.
 - 18. INSTALL NEW POST AND PANEL SIGN (DIRECTIONAL). F5/C102.

- ### HAZMAT NOTES
1. REFER TO HAZARDOUS MATERIAL REPORT FOR HAZARDOUS MATERIALS AND ABATEMENT PROCEDURES.
- REFER TO LEGEND ON C100.

CONSULTANTS:		ARCHITECT/ENGINEERS:		Drawing Title		Project Title		Project Number		NATIONAL CEMETERY ADMINISTRATION DESIGN AND CONSTRUCTION SERVICE Department of Veterans Affairs	
ENVIRONMENTAL PAR ENVIRONMENTAL SERVICES, INC. 1906 21ST STREET SACRAMENTO, CA 95811 (916) 739-8356 MLMANIER@YAHOO.COM JGMANIER@YAHOO.COM		HAZMAT TERRACON CONSULTANTS INC 2817 McGAW AVENUE IRVINE, CA 92614 (949) 864-2025 DAVID.SILVER@TERRACON.COM		JACOBS Jacobs Engineering Group Inc. Consultants in Architecture, Engineering, Planning, and the Environment Irvine Office 3161 Michelson Drive, Suite 500 Irvine, California 92612 (949) 224-7500 Fax (949) 224-7501		CIVIL PLAN		892-CM3-034			
								Building Number 1001			
Revisions				Approved Project Director		Location FORT ROSECRANS NATIONAL CEMETERY CABRILLO MONUMENT DR, SAN DIEGO, CA 92108		Drawing Number CS101			
						Date 8/4/2015		Checked MS		Drawn TT	
								Dwg 6		of 35	