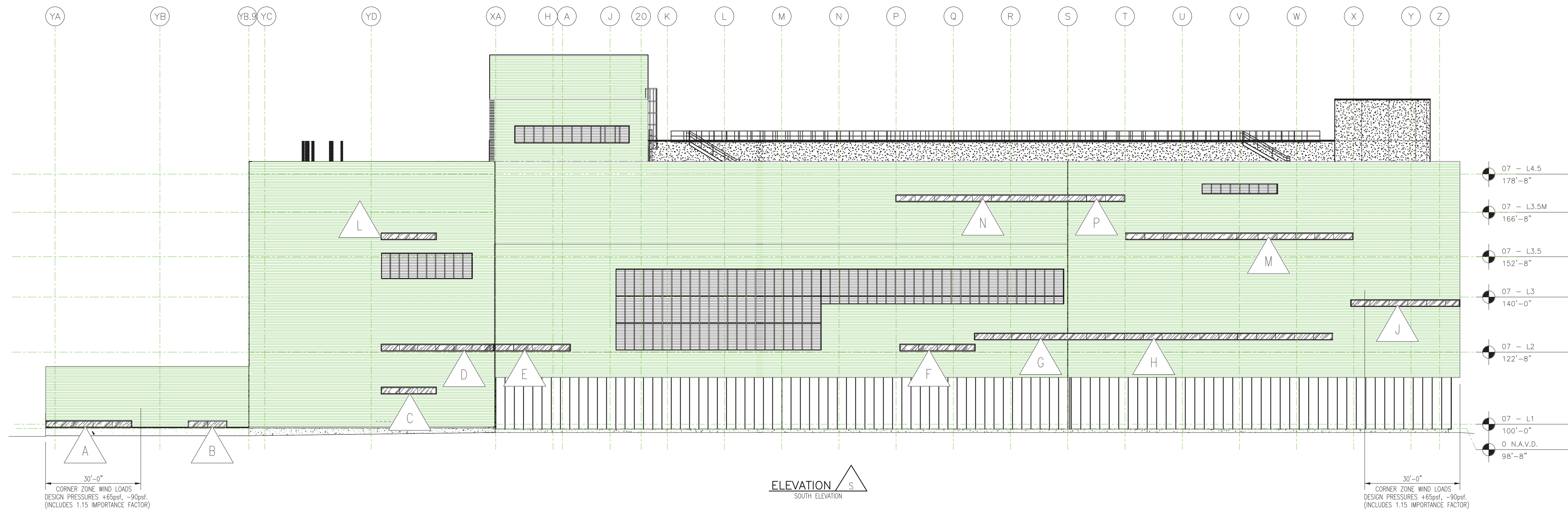


ATTACHMENT 3 - CEP ELEVATIONS - PAGE 1 OF 6

GENERAL NOTE: ALL SOLAR SHADES IN CEP SHALL BE TYPE A

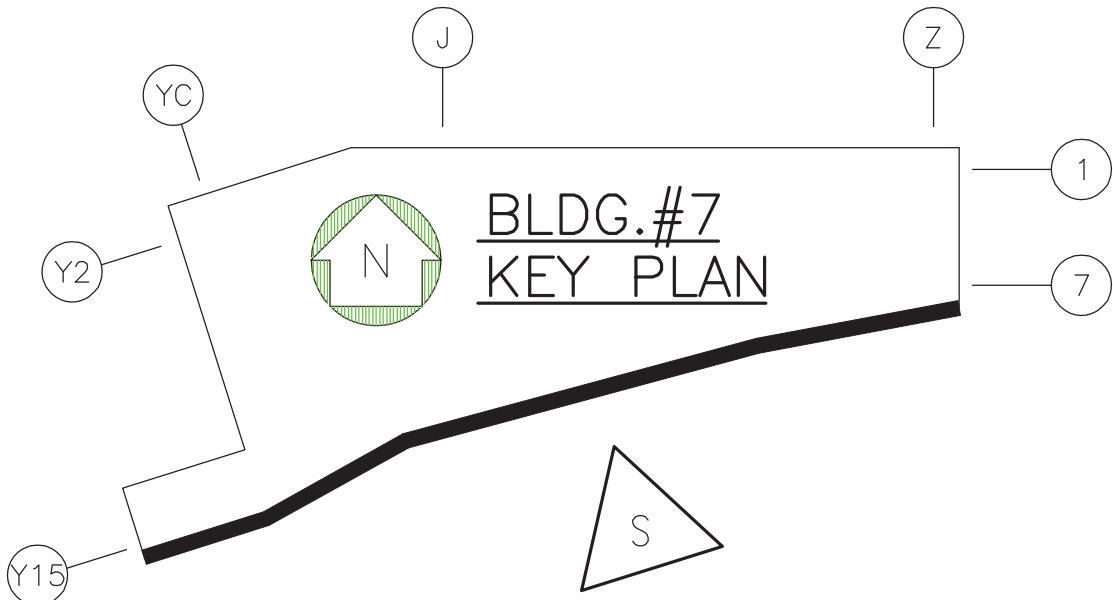


ELEVATION INDEX

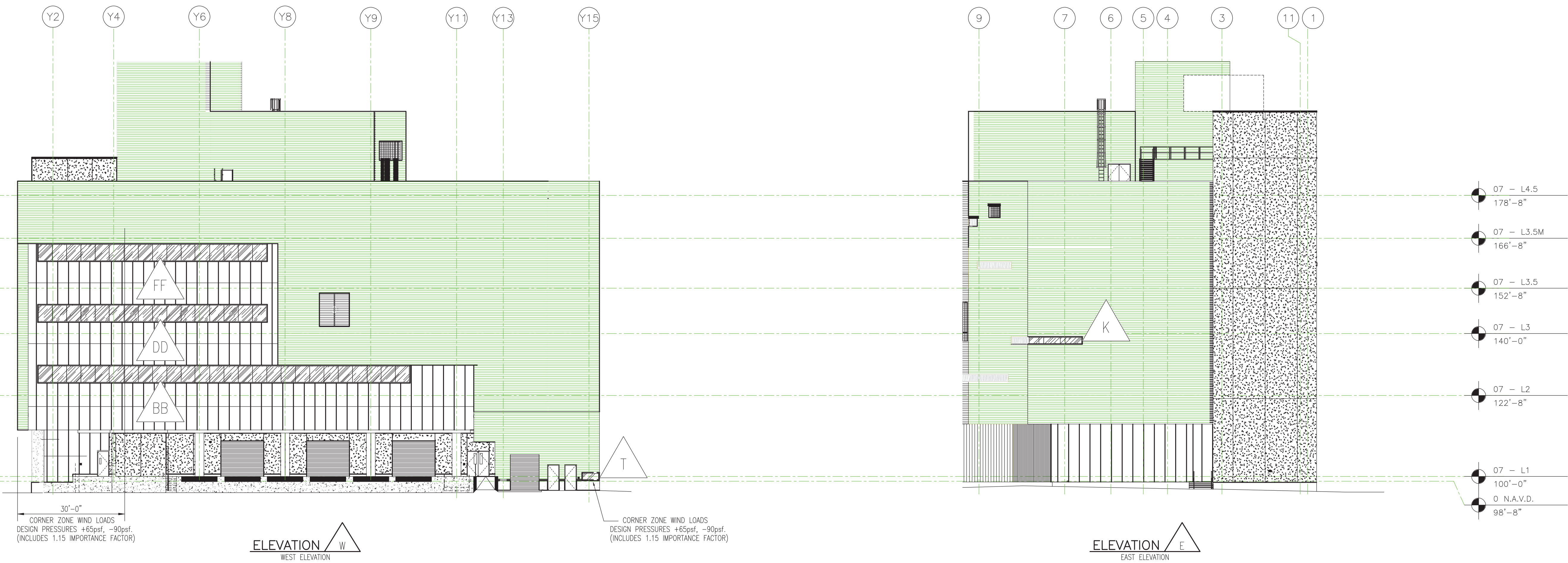
| | | | | | | | | | |
|---|-----------------|---|-----------------|---|-----------------|----|-----------------|----|-----------------|
| A | SEE SHEET E-7-1 | F | SEE SHEET E-7-1 | L | SEE SHEET E-7-2 | R | SEE SHEET E-7-2 | CC | SEE SHEET E-7-3 |
| B | SEE SHEET E-7-1 | G | SEE SHEET E-7-1 | M | SEE SHEET E-7-2 | T | SEE SHEET E-7-1 | DD | SEE SHEET E-7-3 |
| C | SEE SHEET E-7-1 | H | SEE SHEET E-7-1 | N | SEE SHEET E-7-2 | AA | SEE SHEET E-7-3 | EE | SEE SHEET E-7-3 |
| D | SEE SHEET E-7-1 | J | SEE SHEET E-7-2 | P | SEE SHEET E-7-2 | BB | SEE SHEET E-7-3 | FF | SEE SHEET E-7-3 |
| E | SEE SHEET E-7-1 | K | SEE SHEET E-7-2 | Q | SEE SHEET E-7-2 | | | | |

LEGEND:

- 1 5/16" VISION GLASS
- 1 5/16" SPAN. GLASS
- ALUM. PANEL
- EXPANSION ANCHOR
- FIXED ANCHOR
- WINDOW WASHER TIEBACK
- STEEL REINFORCING



ATTACHMENT 3 - CEP ELEVATIONS - PAGE 2 OF 6

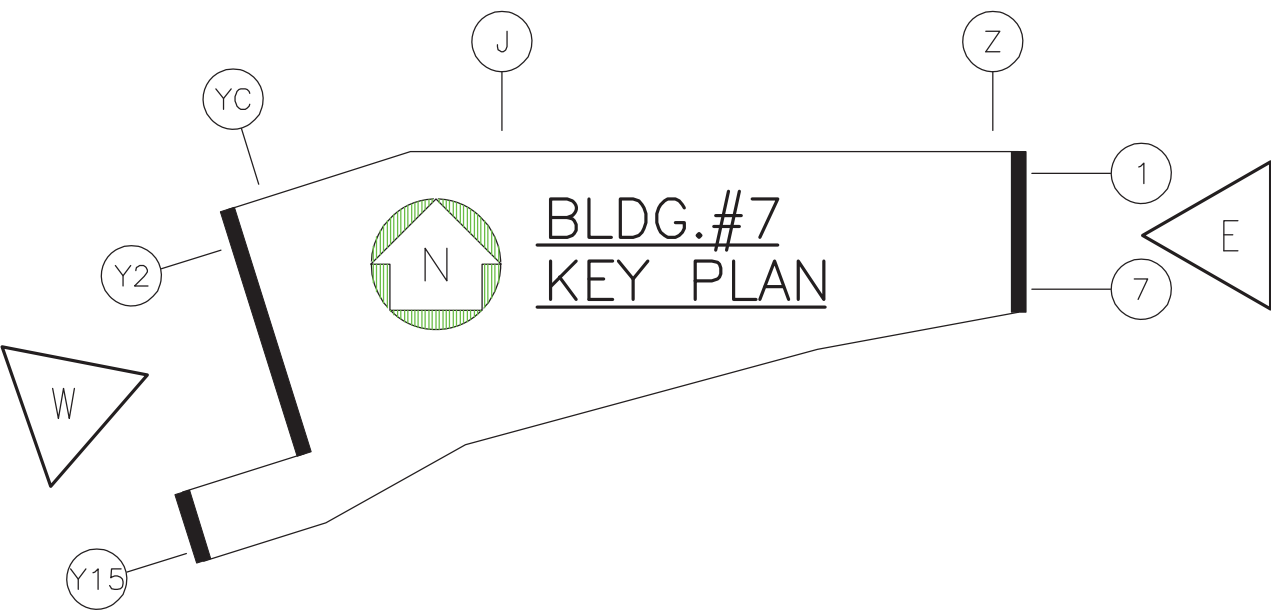


ELEVATION INDEX

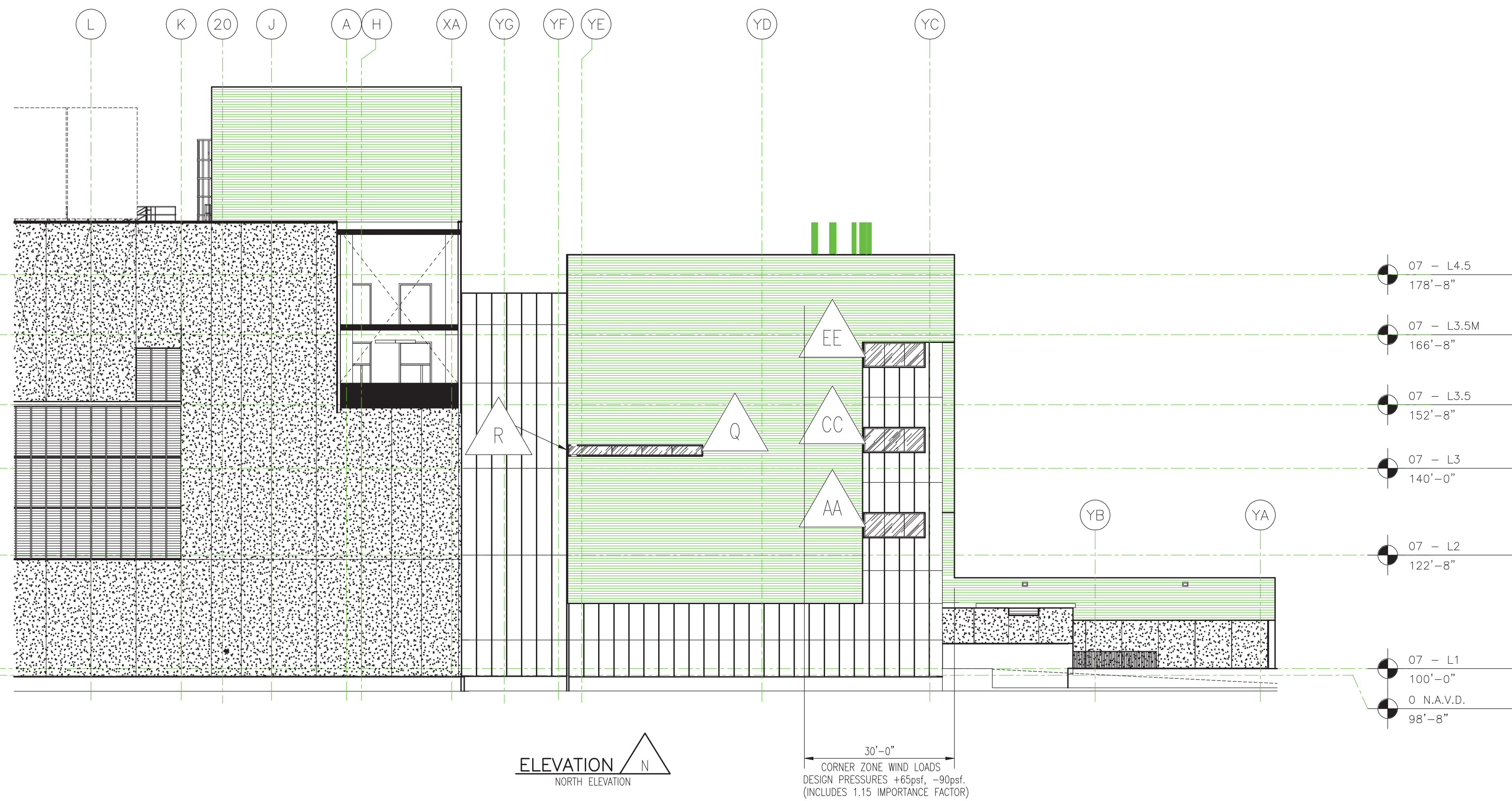
| | | | | | | | | | |
|---|-----------------|---|-----------------|---|-----------------|----|-----------------|----|-----------------|
| A | SEE SHEET E-7-1 | F | SEE SHEET E-7-1 | L | SEE SHEET E-7-2 | R | SEE SHEET E-7-2 | CC | SEE SHEET E-7-3 |
| B | SEE SHEET E-7-1 | G | SEE SHEET E-7-1 | M | SEE SHEET E-7-2 | T | SEE SHEET E-7-1 | DD | SEE SHEET E-7-3 |
| C | SEE SHEET E-7-1 | H | SEE SHEET E-7-1 | N | SEE SHEET E-7-2 | AA | SEE SHEET E-7-3 | EE | SEE SHEET E-7-3 |
| D | SEE SHEET E-7-1 | J | SEE SHEET E-7-2 | P | SEE SHEET E-7-2 | BB | SEE SHEET E-7-3 | FF | SEE SHEET E-7-3 |
| E | SEE SHEET E-7-1 | K | SEE SHEET E-7-2 | Q | SEE SHEET E-7-2 | | | | |

LEGEND:

- 1 5/16" VISION GLASS
- 1 5/16" SPAN. GLASS
- ALUM. PANEL
- EXPANSION ANCHOR
- FIXED ANCHOR
- WINDOW WASHER TIEBACK
- STEEL REINFORCING



ATTACHMENT 3 - CEP ELEVATIONS - PAGE 3 OF 6

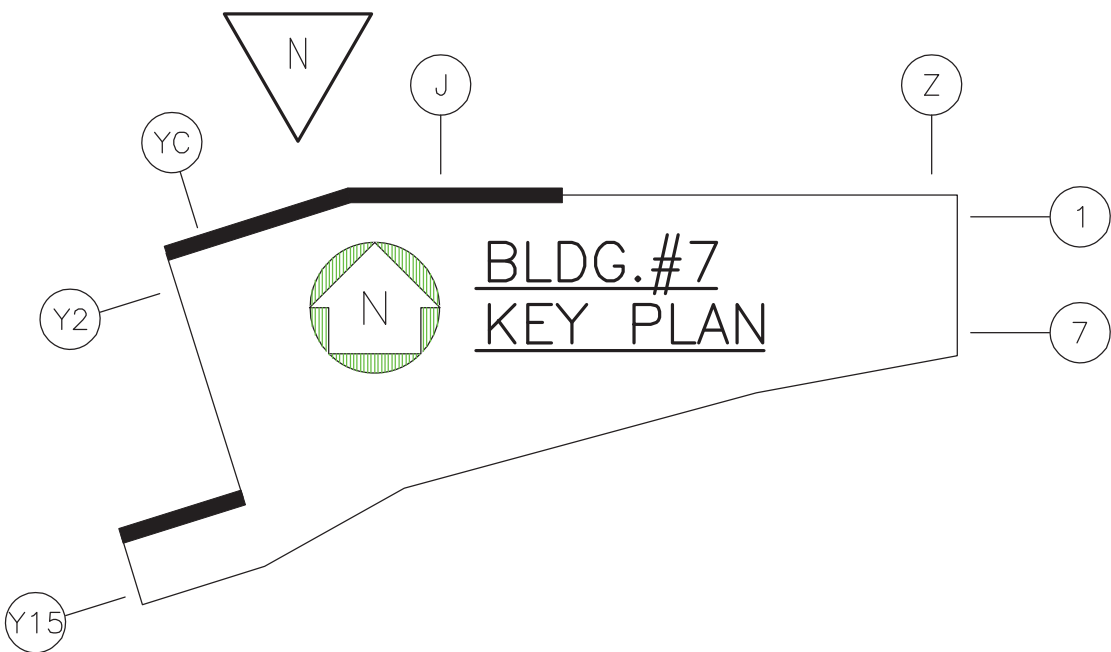


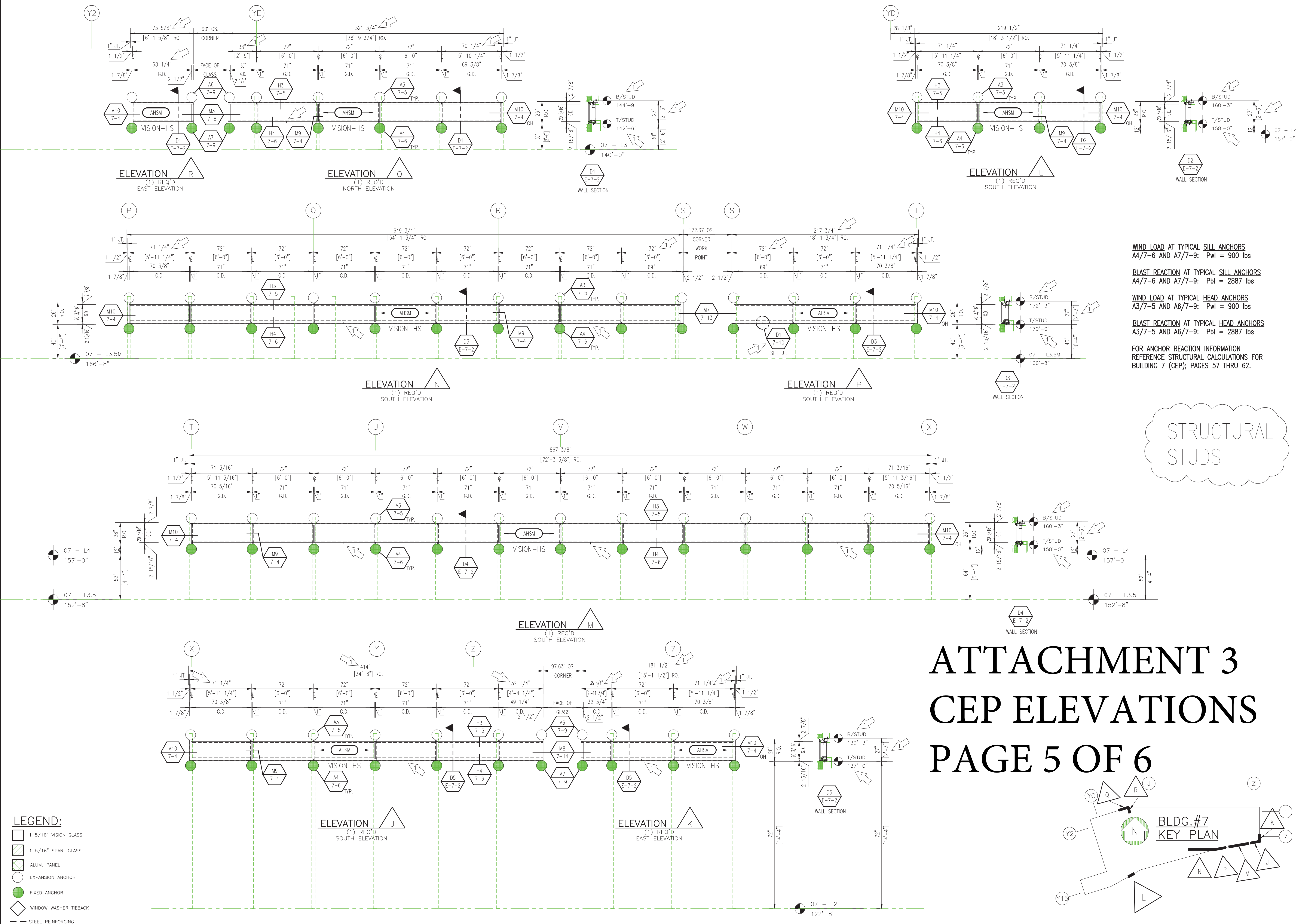
ELEVATION INDEX

| | | | | | | | | | |
|---|-----------------|---|-----------------|---|-----------------|----|-----------------|----|-----------------|
| A | SEE SHEET E-7-1 | F | SEE SHEET E-7-1 | L | SEE SHEET E-7-2 | R | SEE SHEET E-7-2 | CC | SEE SHEET E-7-3 |
| B | SEE SHEET E-7-1 | G | SEE SHEET E-7-1 | M | SEE SHEET E-7-2 | T | SEE SHEET E-7-1 | DD | SEE SHEET E-7-3 |
| C | SEE SHEET E-7-1 | H | SEE SHEET E-7-1 | N | SEE SHEET E-7-2 | AA | SEE SHEET E-7-3 | EE | SEE SHEET E-7-3 |
| D | SEE SHEET E-7-1 | J | SEE SHEET E-7-2 | P | SEE SHEET E-7-2 | BB | SEE SHEET E-7-3 | FF | SEE SHEET E-7-3 |
| E | SEE SHEET E-7-1 | K | SEE SHEET E-7-2 | Q | SEE SHEET E-7-2 | | | | |

LEGEND:

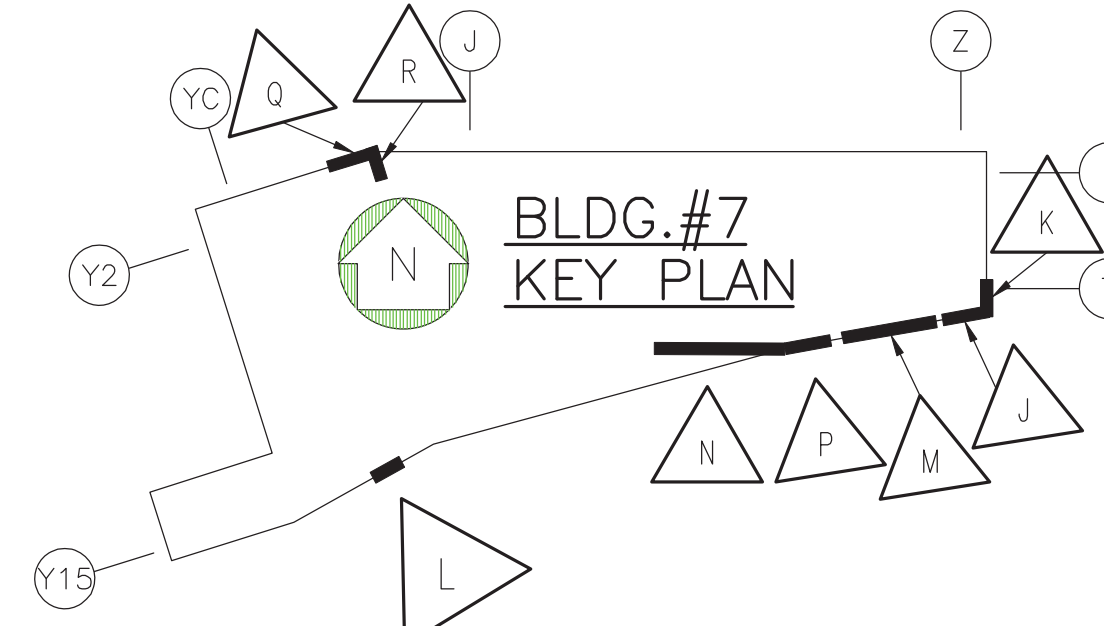
- 1 5/16" VISION GLASS
- 1 5/16" SPAN. GLASS
- ALUM. PANEL
- EXPANSION ANCHOR
- FIXED ANCHOR
- WINDOW WASHER TIEBACK
- STEEL REINFORCING

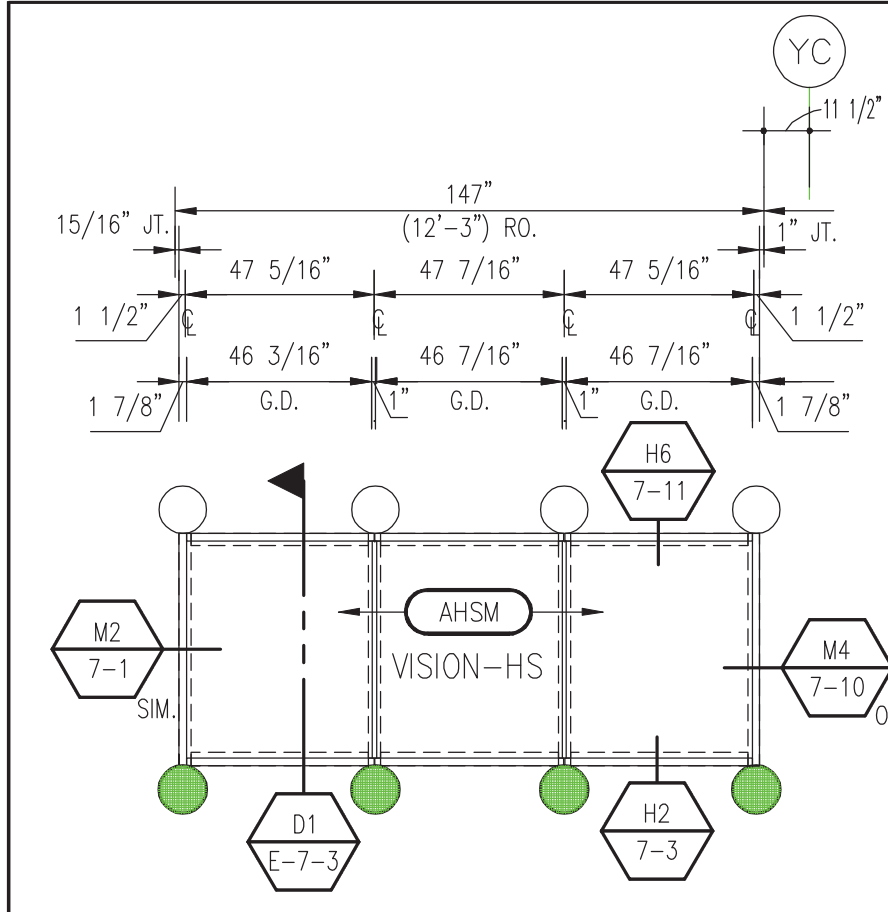




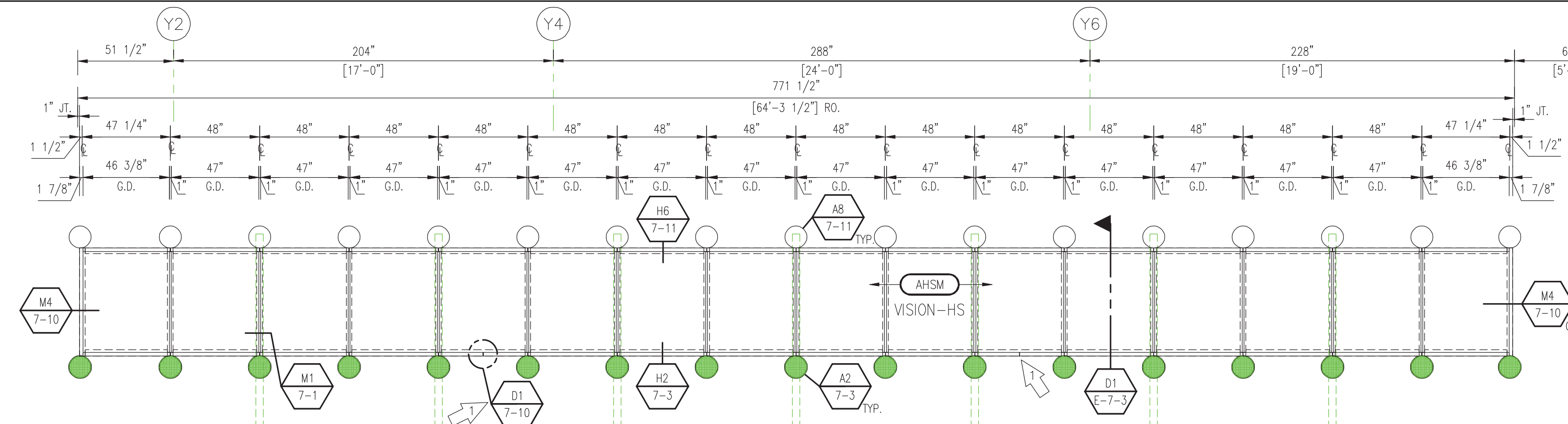
STRUCTURAL
STUDS

ATTACHMENT 3 CEP ELEVATIONS PAGE 5 OF 6

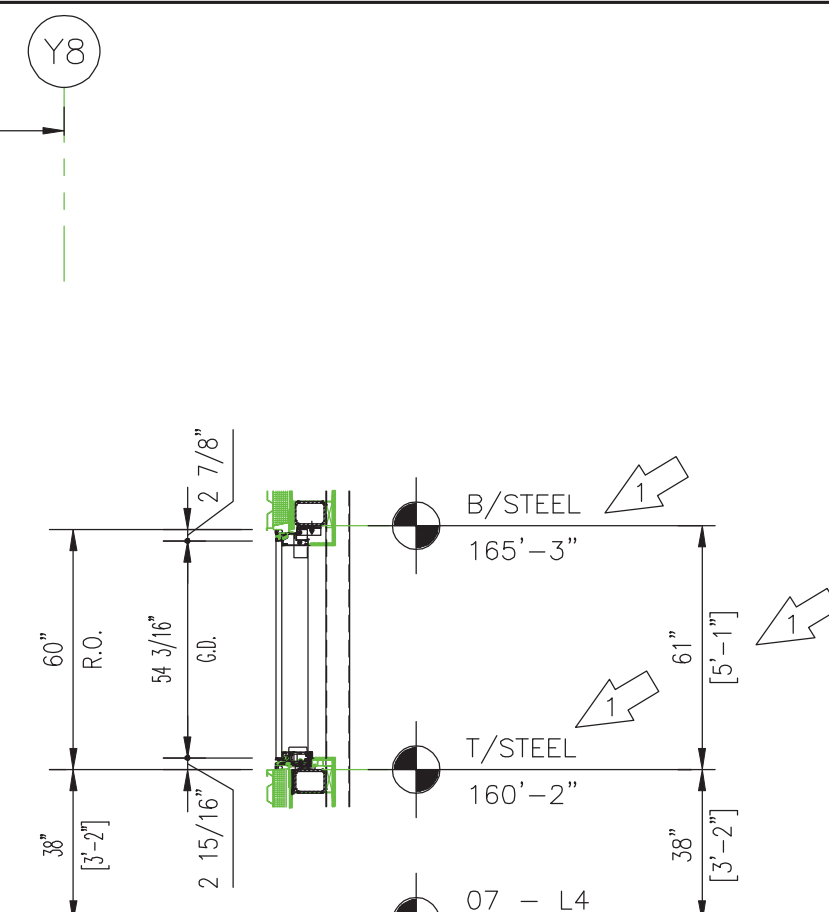




ELEVATION EE
(1) REQ'D
NORTH ELEVATION



ELEVATION FF
(1) REQ'D
WEST ELEVATION



D1 E-7-3
WALL SECTION

STEEL TUBES

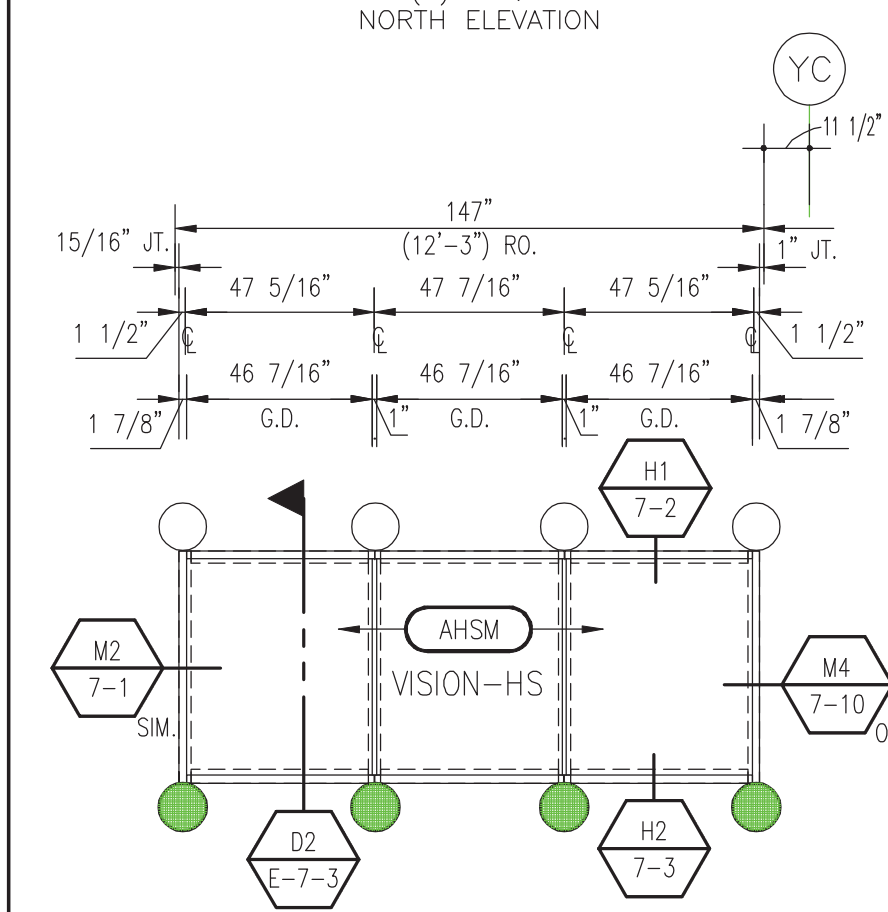
WIND LOAD AT TYPICAL SILL ANCHORS
A2/7-3: Pwl = 900 lbs

BLAST REACTION AT TYPICAL SILL ANCHORS
A2/7-3: Pbl = 2887 lbs

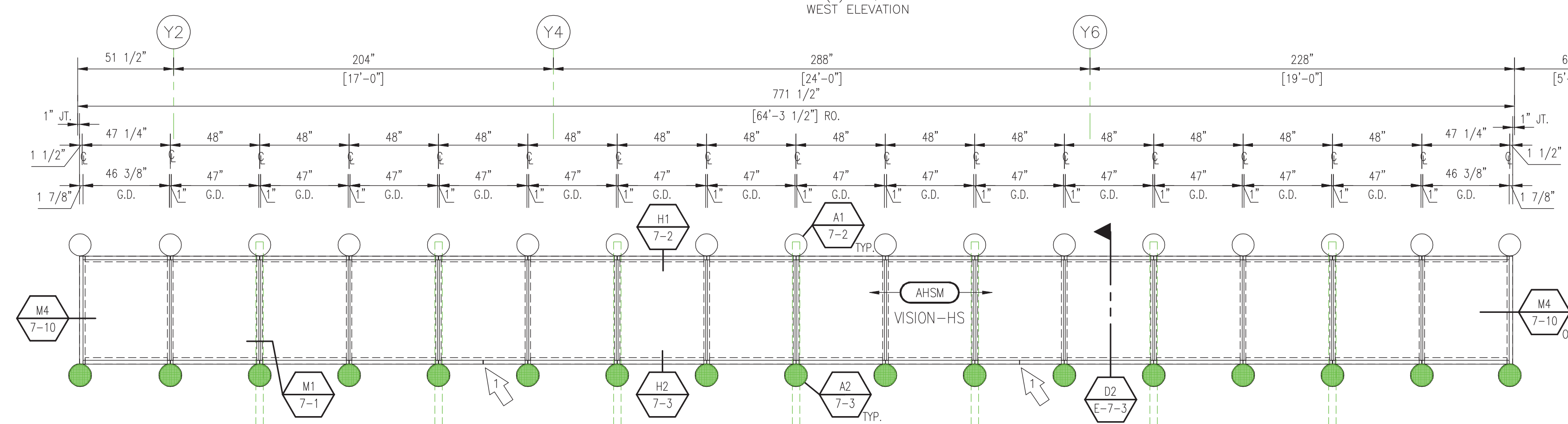
WIND LOAD AT TYPICAL HEAD ANCHORS
A1/7-2 AND A8/7-11: Pwl = 900 lbs

BLAST REACTION AT TYPICAL HEAD ANCHORS
A1/7-2 AND A8/7-11: Pbl = 2887 lbs

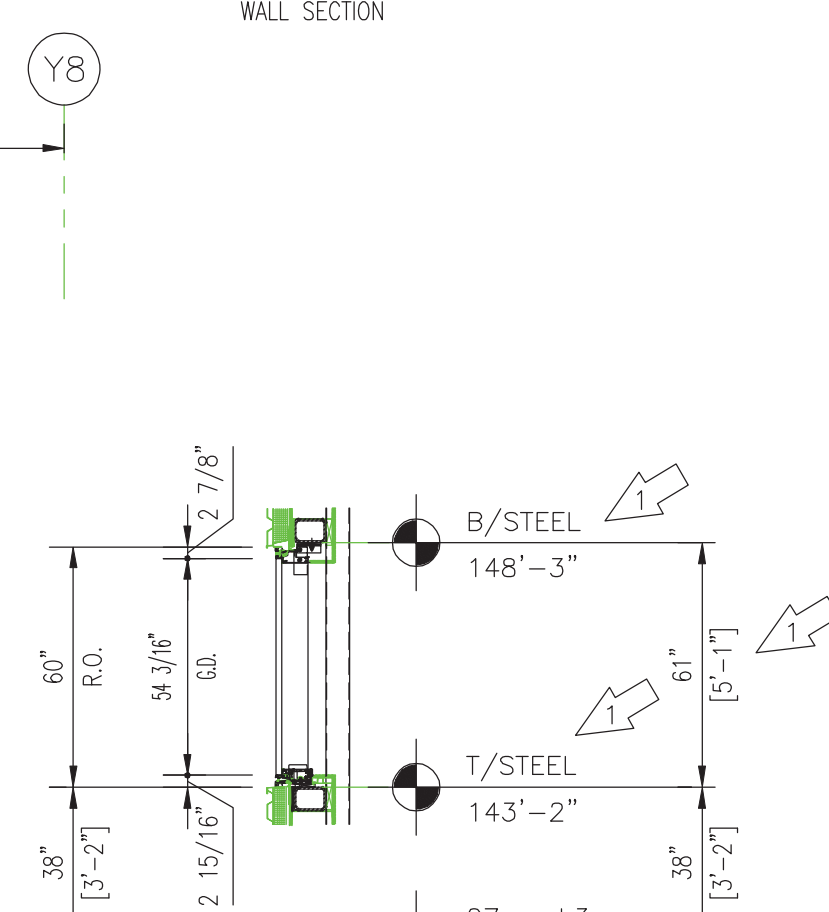
FOR ANCHOR REACTION INFORMATION
REFERENCE STRUCTURAL CALCULATIONS
FOR BUILDING 7 (CEP); PAGES 57 THRU 62.



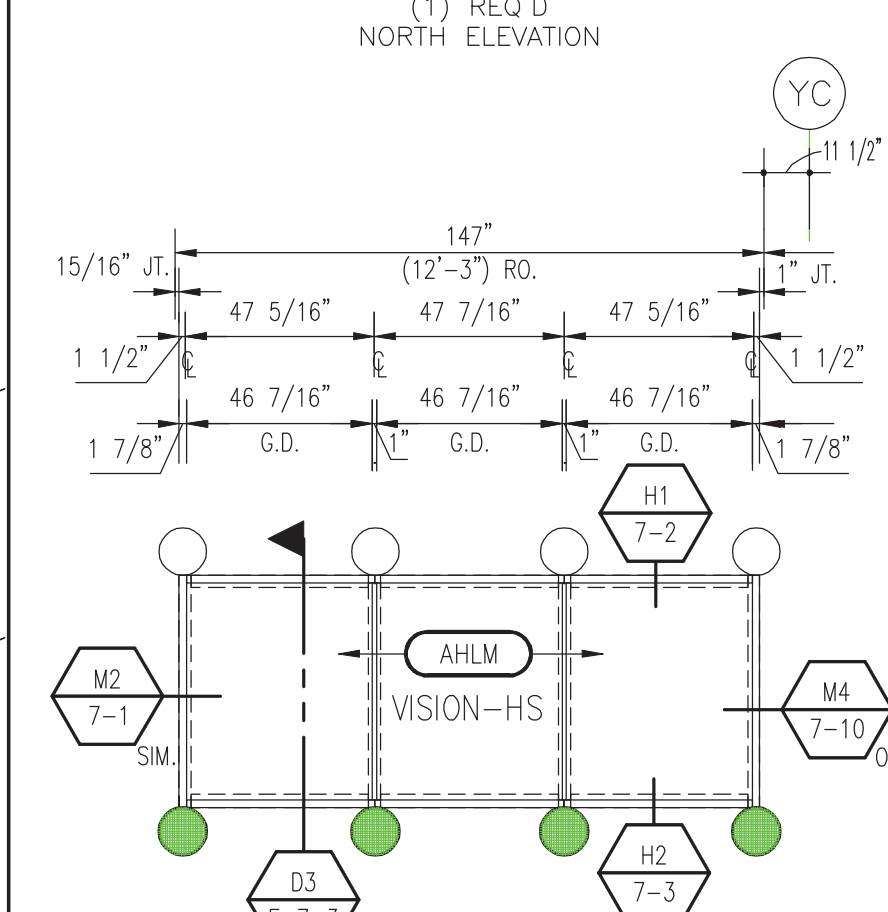
ELEVATION CC
(1) REQ'D
NORTH ELEVATION



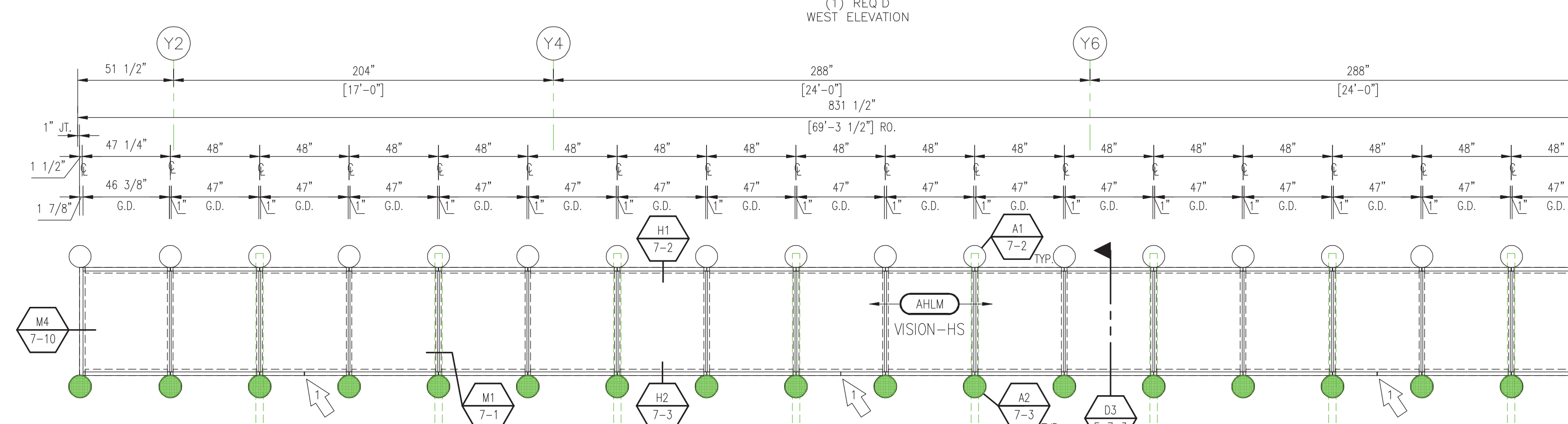
ELEVATION DD
(1) REQ'D
WEST ELEVATION



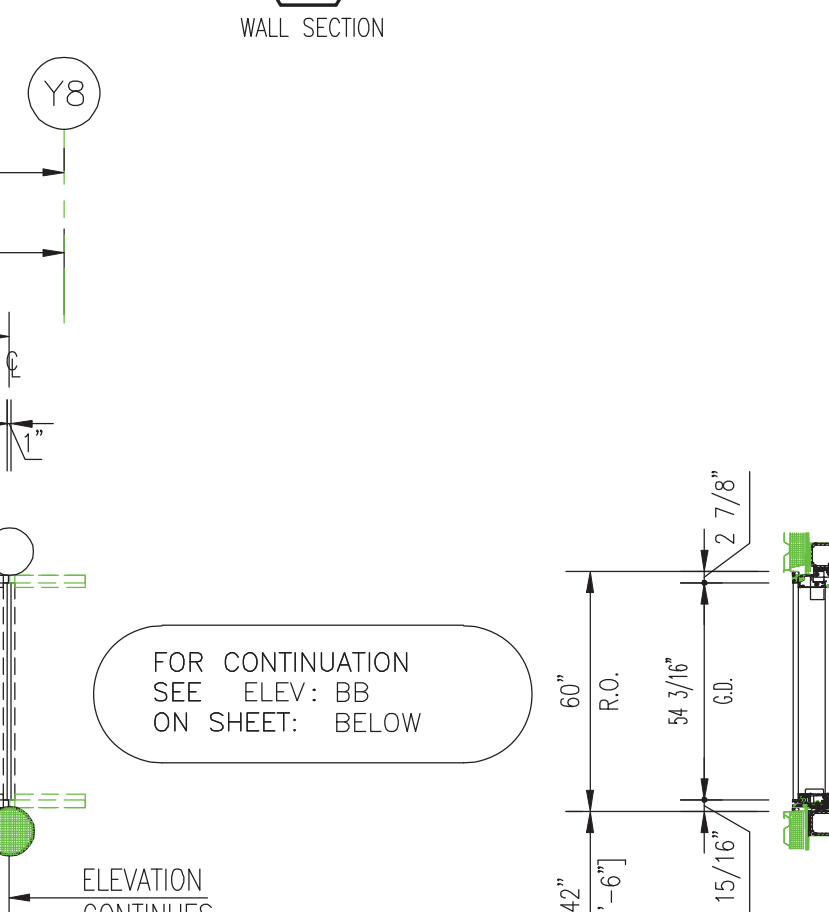
D2 E-7-3
WALL SECTION



ELEVATION AA
(1) REQ'D
NORTH ELEVATION



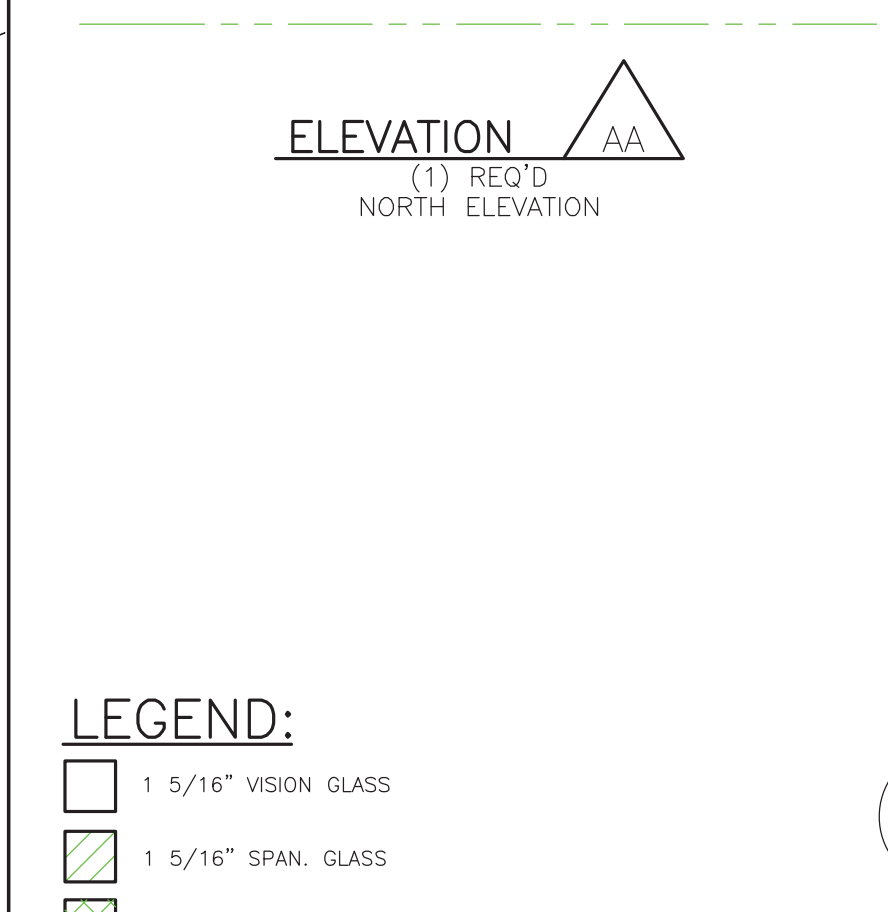
ELEVATION BB
(1) REQ'D
WEST ELEVATION



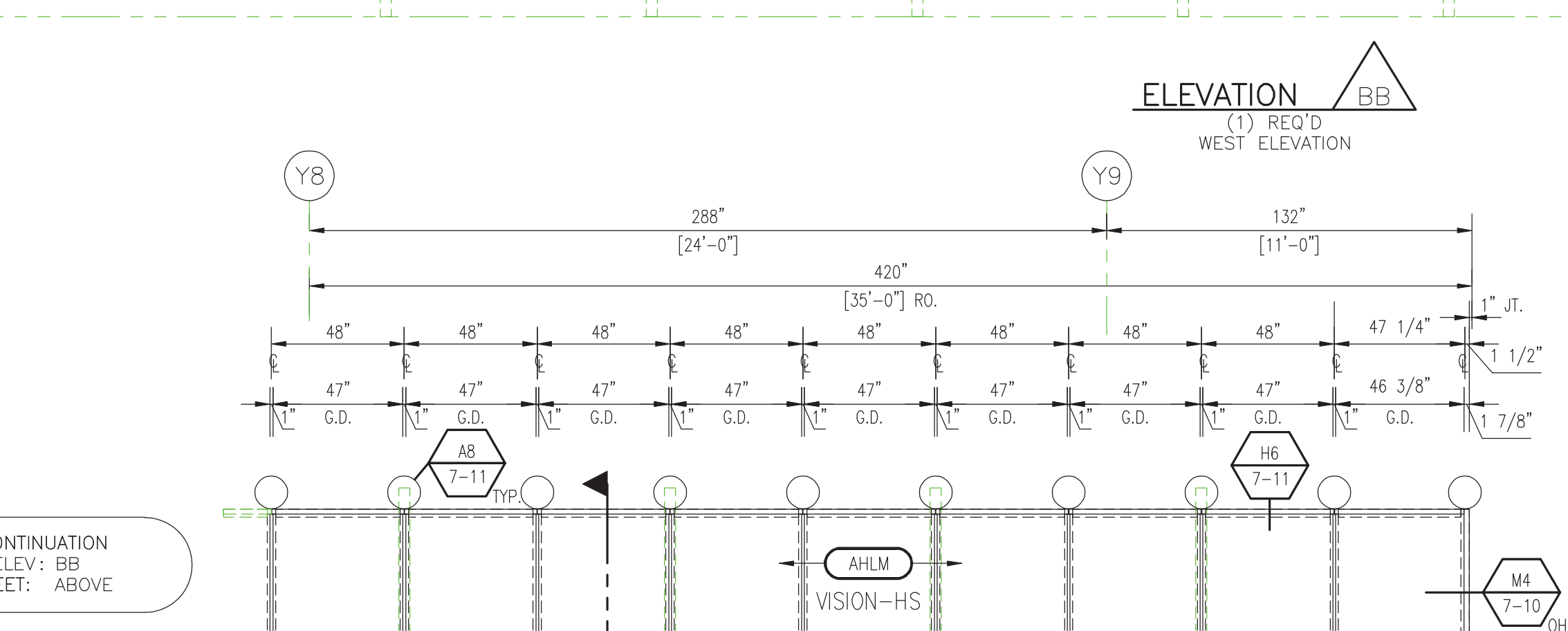
D3 E-7-3
WALL SECTION

FOR CONTINUATION
SEE ELEV: BB
ON SHEET: BELOW

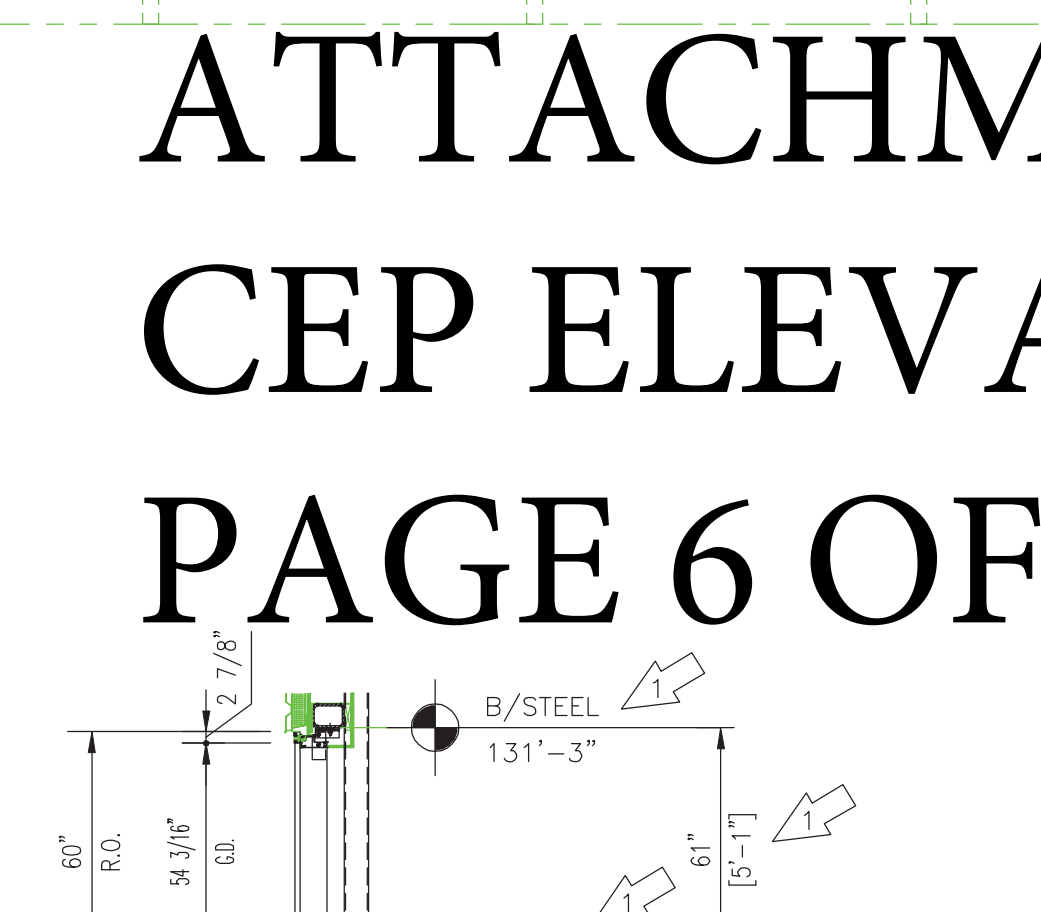
ELEVATION
CONTINUES
BELOW



ELEVATION BB
(1) REQ'D
WEST ELEVATION

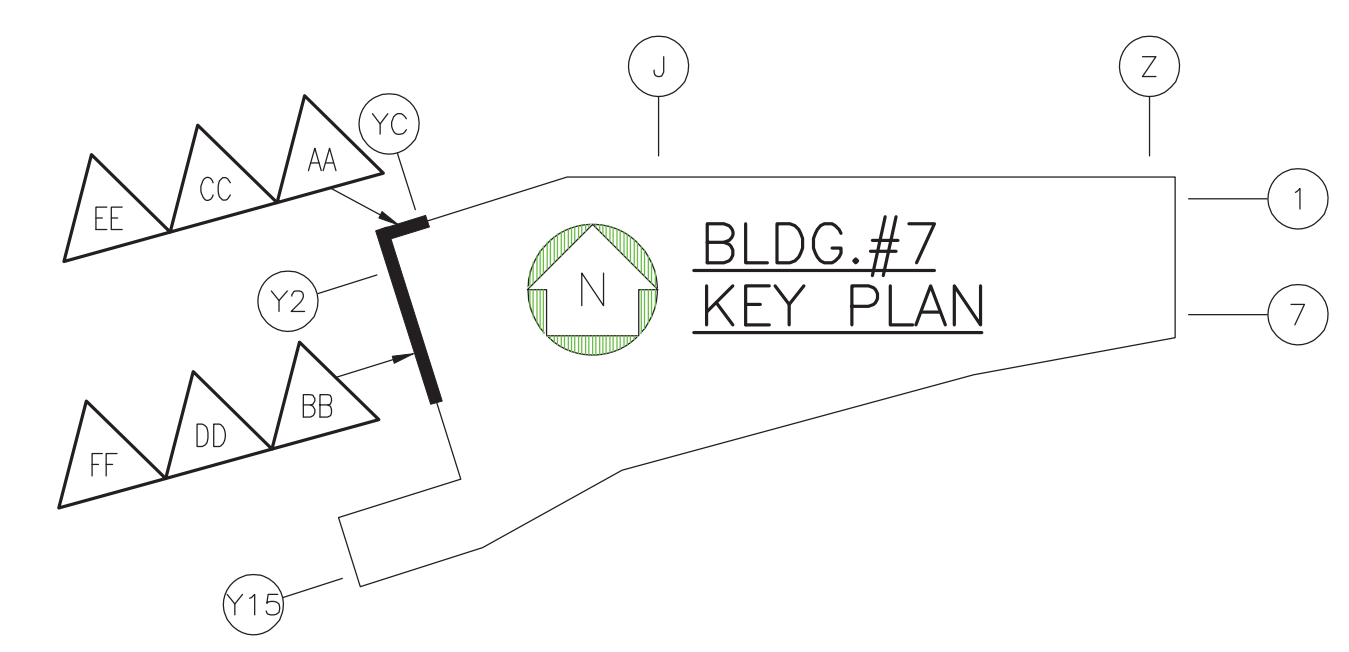


ELEVATION YY
(1) REQ'D
WEST ELEVATION



D3 E-7-3
WALL SECTION

ATTACHMENT 3 CEP ELEVATIONS PAGE 6 OF 6



LEGEND:

- 1 5/16" VISION GLASS
- 1 5/16" SPAN GLASS
- ALUM. PANEL
- EXPANSION ANCHOR
- FIXED ANCHOR
- WINDOW WASHER TIEBACK
- STEEL REINFORCING

FOR CONTINUATION
FROM ABOVE
SEE ELEV: BB
ON SHEET: ABOVE

ELEVATION BB
(1) REQ'D
WEST ELEVATION

ELEVATION
CONTINUES
ABOVE