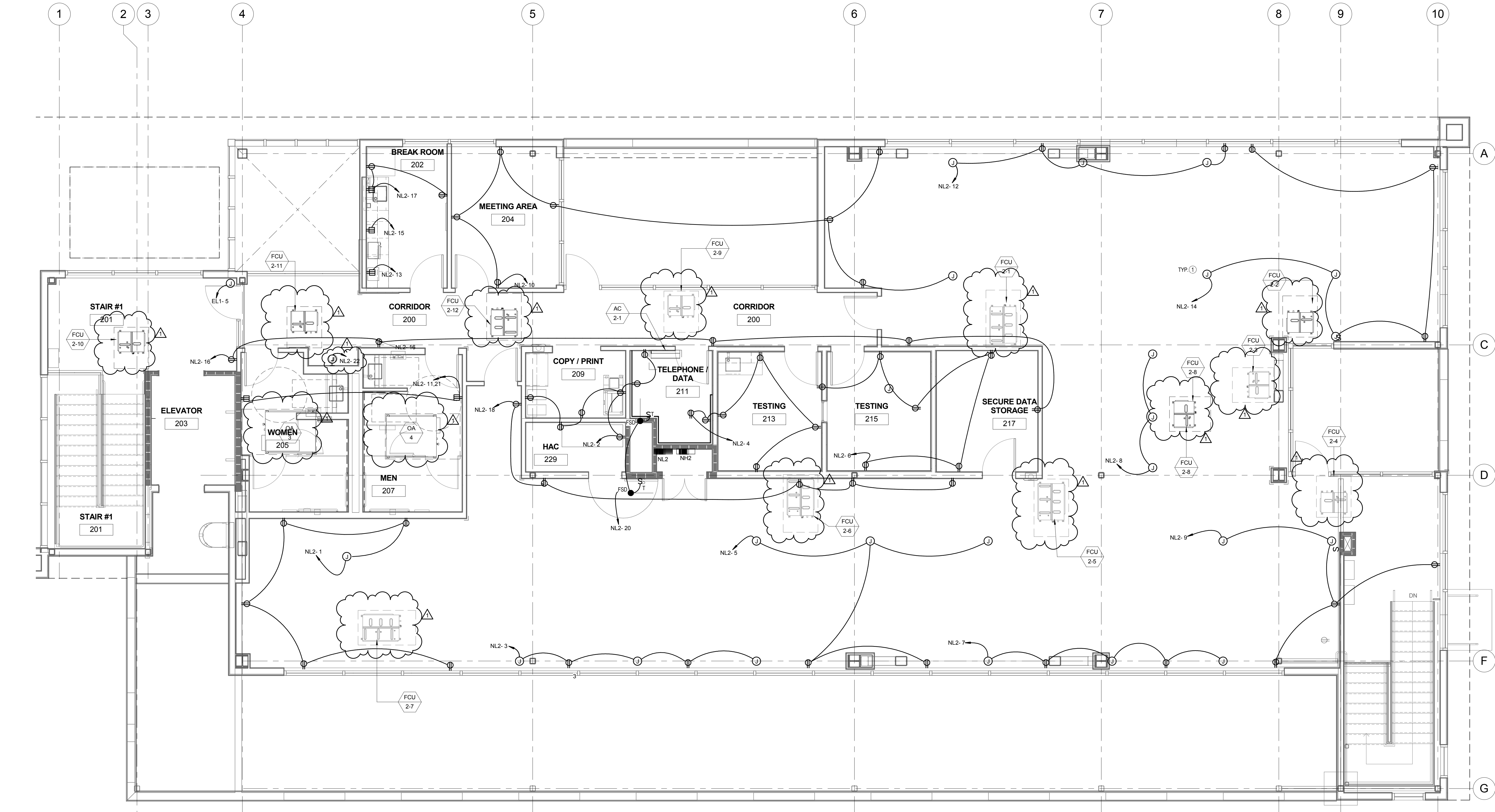


one eighth inch = one foot  
one quarter inch = one foot  
one half inch = one foot  
three eighths inch = one foot  
one inch = one foot  
three quarters inch = one foot  
one and one half inches = one foot  
two inches = one foot  
three inches = one foot  
four inches = one foot  
five inches = one foot  
six inches = one foot  
seven inches = one foot  
eight inches = one foot  
nine inches = one foot  
ten inches = one foot  
eleven inches = one foot  
twelve inches = one foot  
thirteen inches = one foot  
fourteen inches = one foot  
fifteen inches = one foot  
sixteen inches = one foot  
seventeen inches = one foot  
eighteen inches = one foot  
nineteen inches = one foot  
twenty inches = one foot  
twenty one inches = one foot  
twenty two inches = one foot  
twenty three inches = one foot  
twenty four inches = one foot  
twenty five inches = one foot  
twenty six inches = one foot  
twenty seven inches = one foot  
twenty eight inches = one foot  
twenty nine inches = one foot  
thirty inches = one foot  
thirty one inches = one foot  
thirty two inches = one foot  
thirty three inches = one foot  
thirty four inches = one foot  
thirty five inches = one foot  
thirty six inches = one foot  
thirty seven inches = one foot  
thirty eight inches = one foot  
thirty nine inches = one foot  
forty inches = one foot  
forty one inches = one foot  
forty two inches = one foot  
forty three inches = one foot  
forty four inches = one foot  
forty five inches = one foot  
forty six inches = one foot  
forty seven inches = one foot  
forty eight inches = one foot  
forty nine inches = one foot  
fifty inches = one foot  
fifty one inches = one foot  
fifty two inches = one foot  
fifty three inches = one foot  
fifty four inches = one foot  
fifty five inches = one foot  
fifty six inches = one foot  
fifty seven inches = one foot  
fifty eight inches = one foot  
fifty nine inches = one foot  
sixty inches = one foot  
sixty one inches = one foot  
sixty two inches = one foot  
sixty three inches = one foot  
sixty four inches = one foot  
sixty five inches = one foot  
sixty six inches = one foot  
sixty seven inches = one foot  
sixty eight inches = one foot  
sixty nine inches = one foot  
seventy inches = one foot  
seventy one inches = one foot  
seventy two inches = one foot  
seventy three inches = one foot  
seventy four inches = one foot  
seventy five inches = one foot  
seventy six inches = one foot  
seventy seven inches = one foot  
seventy eight inches = one foot  
seventy nine inches = one foot  
eighty inches = one foot  
eighty one inches = one foot  
eighty two inches = one foot  
eighty three inches = one foot  
eighty four inches = one foot  
eighty five inches = one foot  
eighty six inches = one foot  
eighty seven inches = one foot  
eighty eight inches = one foot  
eighty nine inches = one foot  
ninety inches = one foot  
ninety one inches = one foot  
ninety two inches = one foot  
ninety three inches = one foot  
ninety four inches = one foot  
ninety five inches = one foot  
ninety six inches = one foot  
ninety seven inches = one foot  
ninety eight inches = one foot  
ninety nine inches = one foot  
one hundred inches = one foot



1 POWER PLAN - SECOND FLOOR  
1/4" = 1'-0"

GENERAL SHEET NOTES

A. COORDINATE CIRCUIT CONNECTIONS TO OUTLETS PROVIDED UNDER THE DIRTT SYSTEM. THERE SHALL BE 6-8 DUPLEX OUTLETS PER CIRCUIT.

KEY NOTES

1 JUNCTION BOX ACCESS FEED TO DIRTT FURNITURE SYSTEM (FFE).

100% CONSTRUCTION DOCUMENT SUBMISSION  
APRIL 20, 2015

<div>DELTA 1</div> <div>ADDENDUM #1</div> <div>7/31/2015</div> <div>Revisions:</div> <div>Date</div>	<div>CONSULTANTS:</div> <div><div>MAZZETTI</div><div>220 Montgomery Street, Suite 650 San Francisco, CA 94104 TEL: 415.632.3966 www.mazzetti.com</div><div>PROJECT NUMBER: 130-055</div></div>	<div><div>REGISTERED PROFESSIONAL ENGINEER ELECTRICAL STATE OF CALIFORNIA No. 51876 Exp. 12/31/15</div></div>	<div>ARCHITECT</div> <div><div>POLYTECH ASSOCIATES INC.</div><div>235 Pine Street, 17th Floor San Francisco, CA 94104 TEL (415) 397-3117 FAX (415) 397-1517</div></div>	<div>Drawing Title</div> <div>POWER PLAN - SECOND FLOOR</div> <div>Approved: Project Director</div>	<div>Project Title</div> <div>NEUROCOG TBI RESEARCH BUILDING / BUILDING R4 DEMOLITION / NEW PARKING LOT</div> <div>Location</div> <div>150 MIJR ROAD, MARTINEZ, CA 94553</div> <div>Date</div> <div>3/18/15</div> <div>Checked</div> <div>Author</div> <div>Drawn</div> <div>Checker</div>	<div>Project Number</div> <div>612-125</div> <div>Building Number</div> <div></div> <div>Drawing Number</div> <div>EP102</div>	<div>Office of Construction and Facilities Management</div> <div><div>Department of Veterans Affairs</div></div>
--	--	---	---	---	--	--	--