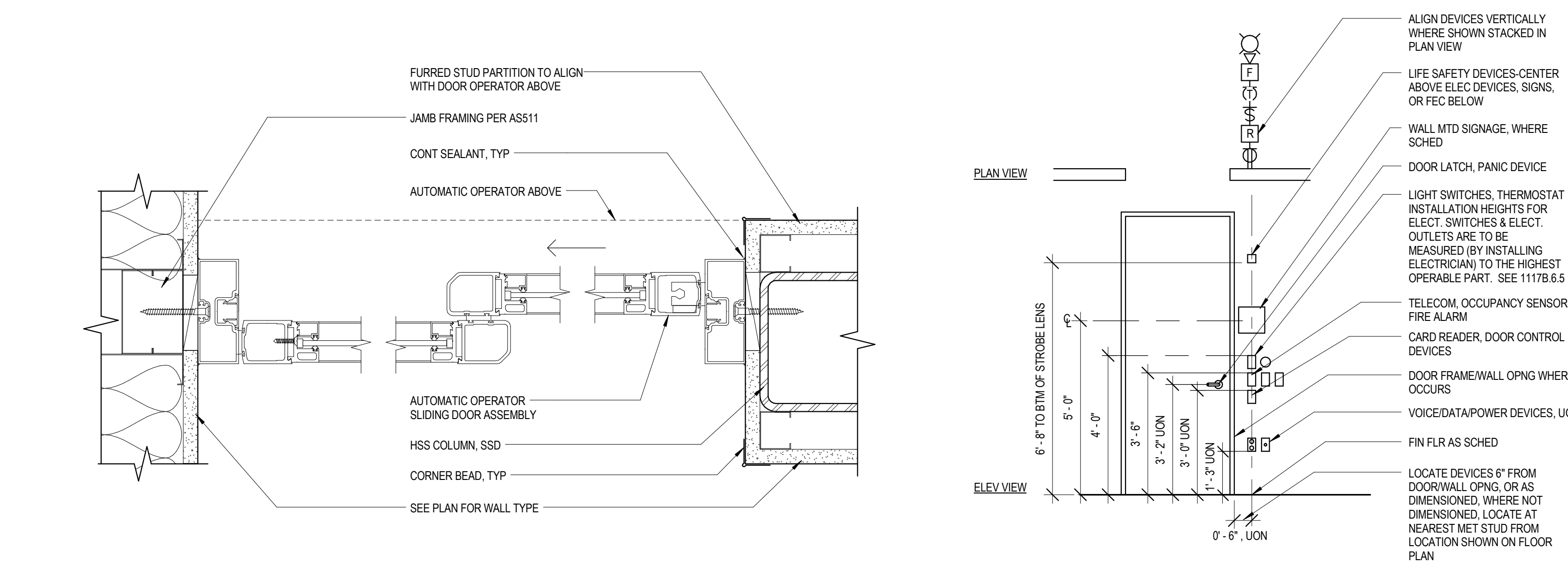
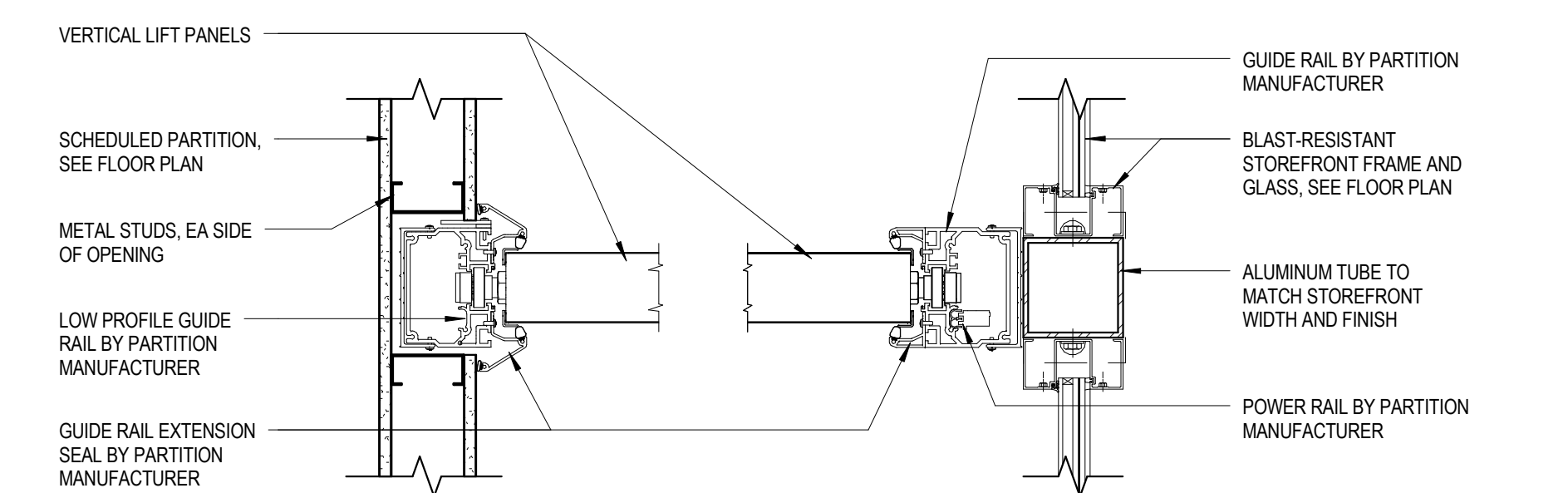


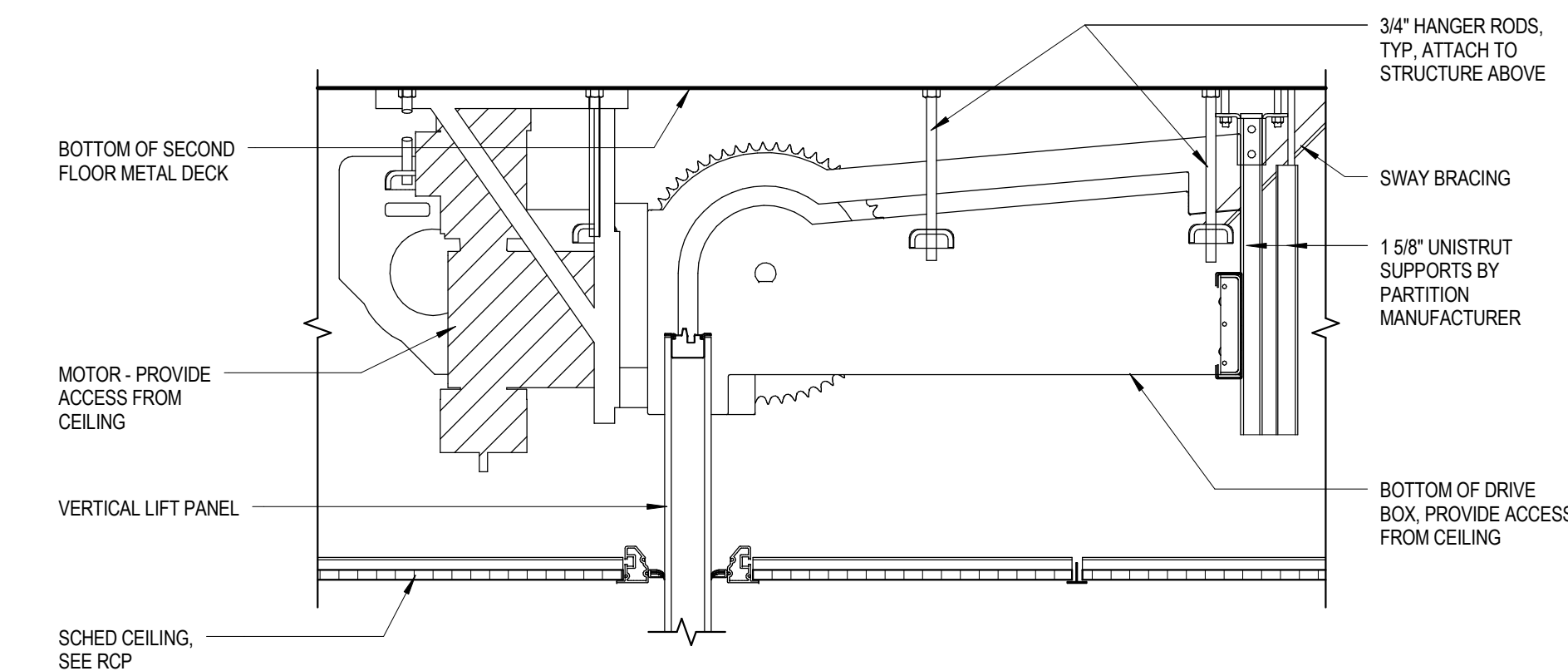
DOOR DETAILS



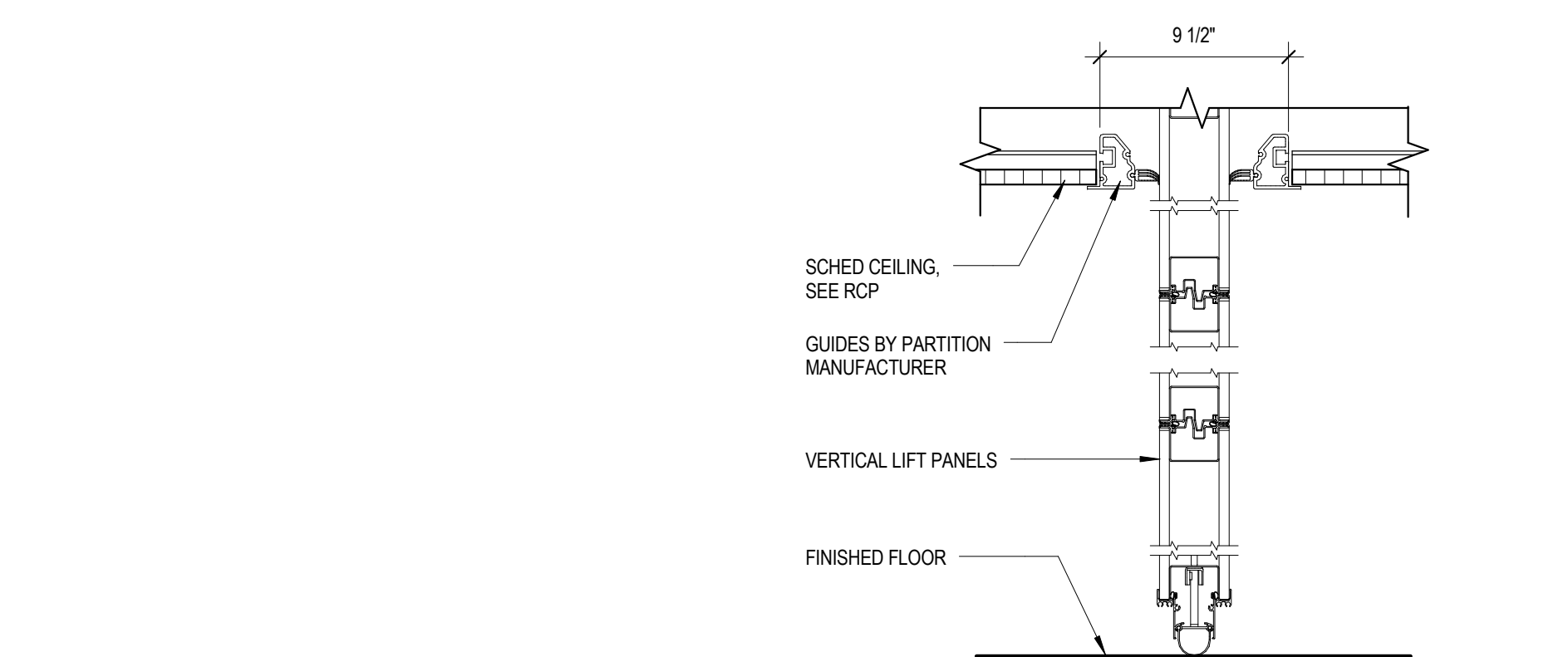
4 SILDER JAMB DETAIL



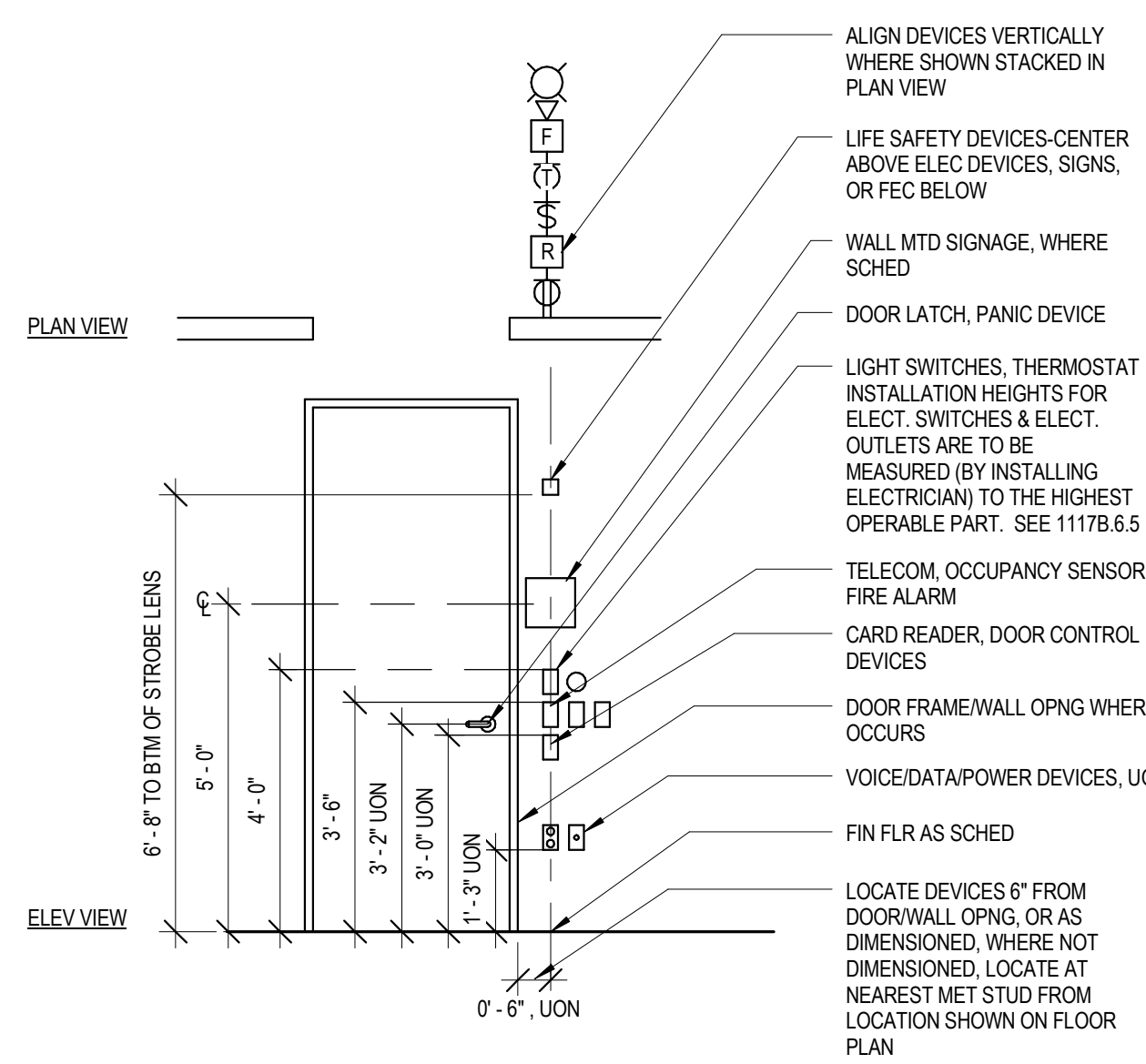
5 VERTICAL LIFT PARTITION - JAMB
1 1/2" = 1'-0"



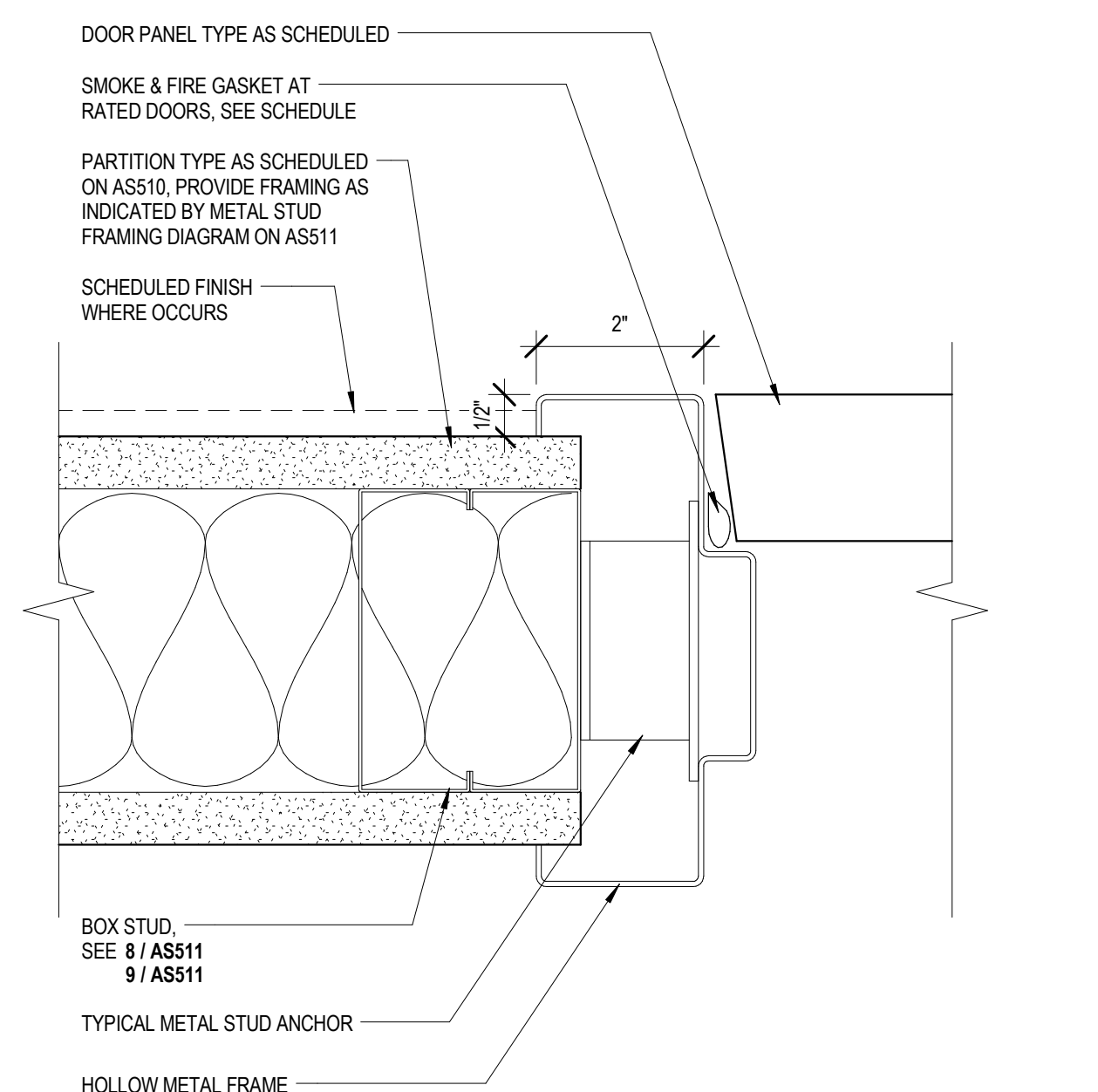
6 VERTICAL LIFT PARTITION - DRIVE BOX



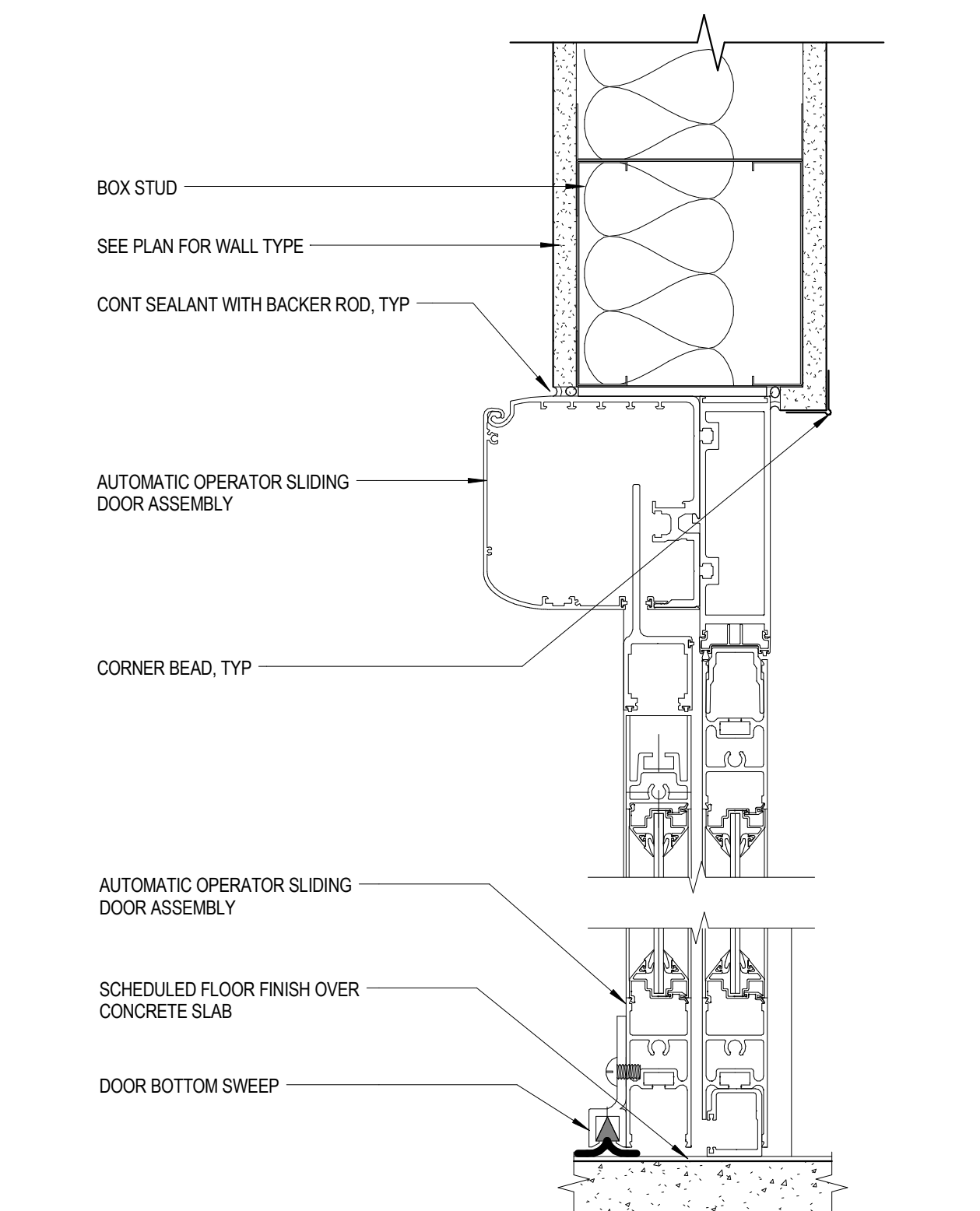
7 VERTICAL LIFT PARTITION - HEAD AND SILL
1 1/2" = 1'-0"



1 DOOR DEVICE ALIGNMENT DIAGRAM



2 HM DOOR JAMB DETAIL AT STUD WALL (HEAD SIM)
6" = 1'-0"

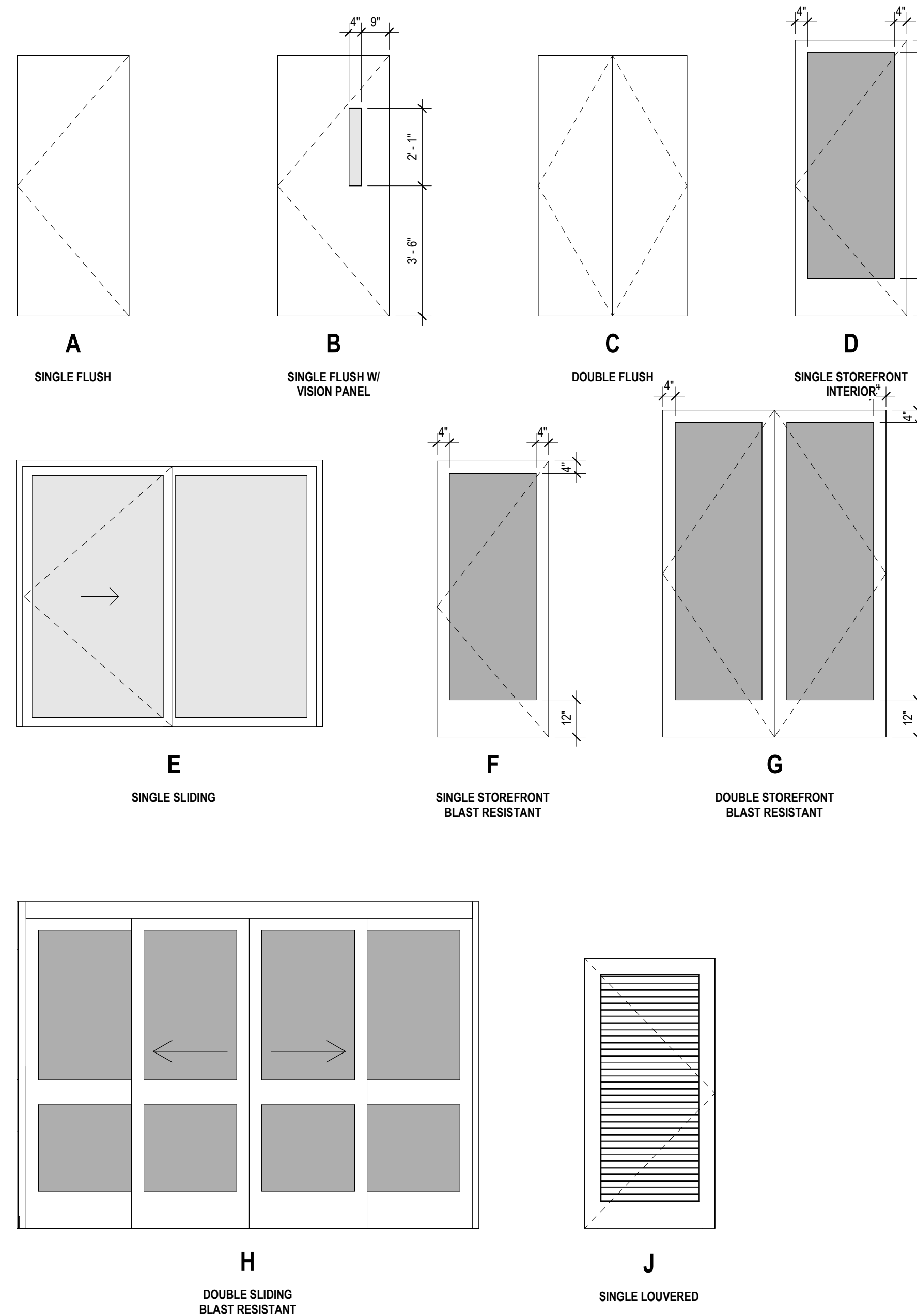


3 SLIDER HEAD / SILL DETAIL

DOOR SCHEDULE

DOOR		FROM ROOM:		LOCATION		TO ROOM:		DOOR		FRAME		FRAME		DETAILS		COMMENTS		
NOOR NUMBER	ROOM NUMBER	FROM ROOM: NAME	TO ROOM: NUMBER	TO ROOM: NAME	PANEL TYPE	WIDTH	HEIGHT	MATERIAL	FINISH	VISION LIGHT	FRAME TYPE	MATERIAL	FINISH	FIRE RATING	HARDWARE GROUP		JAMB	THRESHOLD
100	100	VESTIBULE	105	CORRIDOR	E	12'-0"	8'-0"	ALUMINUM/GLASS	ANODIZED	TEMPERED	INTEGRAL	ALUMINUM	ANODIZED	FACTORY	NR	E5	2A/S601	3A/S601
100A	100	VESTIBULE	105	CORRIDOR	H	7'-10 3/4"	7'-0"	ALUMINUM/GLASS	FACTORY	TEMPERED	INTEGRAL	ALUMINUM	ANODIZED	FACTORY	NR	E5	2A/S601	3A/S601
104	104	ADMIN SUITE	105	CORRIDOR	A	3'-0"	7'-0"	SCWD	PT2S	NONE	1	HM	PT13	NR	SH-3C	2A/S601	2A/S601	
105	105	CORRIDOR	108	OPEN OFFICE	B	3'-0"	7'-0"	SCWD	PT11	TEMPERED	1	HM	PT13	NR	SH-3C	2A/S601	2A/S601	
106A	106	LARGE GROUP ROOM	105	CORRIDOR	B	3'-0"	7'-0"	SCWD	PT11	TEMPERED	1	HM	PT13	NR	4	2A/S601	2A/S601	
106B	106	LARGE GROUP ROOM	105	CORRIDOR	G	3'-0"	7'-0"	SCWD	PT11	TEMPERED	1	HM	PT13	NR	4	2A/S601	2A/S601	
106C	106	LARGE GROUP ROOM	105	CORRIDOR	B	6'-0"	8'-9 1/2"	ALUMINUM/GLASS	ANODIZED	TEMPERED	5	ALUMINUM	ANODIZED	NR	E9	2A/S601	2A/S601	
106D	106	LARGE GROUP ROOM	105	CORRIDOR	G	6'-0"	8'-9 1/2"	ALUMINUM/GLASS	ANODIZED	TEMPERED	5	ALUMINUM	ANODIZED	NR	E9	2A/S601	2A/S601	
107	107	TESTING OR PATIENT COORDINATION	105	CORRIDOR	A	3'-0"	7'-0"	SCWD	PT11	NONE	1	HM	PT13	NR	3G	2A/S601	2A/S601	
109	109	TESTING	105	CORRIDOR	A	3'-0"	7'-0"	SCWD	PT11	NONE	1	HM	PT13	NR	3G	2A/S601	2A/S601	
111	111	MEDICAL EXAM ROOM	105	CORRIDOR	A	3'-0"	7'-0"	SCWD	PT11	NONE	1	HM	PT13	NR	3G	2A/S601	2A/S601	
113	113	FLEX POD	108	OPEN OFFICE	A	3'-0"	7'-0"	SCWD	PT11	NONE	1	HM	PT13	NR	3G	2A/S601	2A/S601	
117	117	ELECTRO PREP	108	OPEN OFFICE	A	3'-0"	7'-0"	SCWD	PT11	NONE	1	HM	PT13	NR	3G	2A/S601	2A/S601	
119	119	ELECTRO PHYSIOLOGY	108	ELECTRO PREP	A	3'-0"	7'-0"	SCWD	PT11	NONE	1	HM	PT13	NR	3G	2A/S601	2A/S601	
119A	119	ELECTRO PHYSIOLOGY	119	ELECTRO PHYSIOLOGY	A	3'-0"	7'-0"	SCWD	PT11	NONE	1	HM	PT13	NR	3G	2A/S601	2A/S601	
120	120	STAIR #2	108	OPEN OFFICE	A	3'-0"	7'-4 3/4"	HM	PT11	NONE	1	HM	PT13	NR	SH-3C	2A/S601	2A/S601	
120A	120	STAIR #2	108	OPEN OFFICE	A	3'-0"	7'-0"	SCWD	PT2S	NONE	1	HM	PT13	NR	1	2A/S601	2A/S601	
121	121	ELECTRO PHYSIOLOGY	117	ELECTRO PREP	A	3'-0"	7'-0"	SCWD	PT11	NONE	1	HM	PT13	NR	3G	2A/S601	2A/S601	
121A	121	ELECTRO PHYSIOLOGY	121	ELECTRO PHYSIOLOGY	A	3'-0"	6'-6"	SCWD	PT11	NONE	1	HM	PT13	NR	1F	2A/S601	2A/S601	
123A	108	OPEN OFFICE	105	CORRIDOR	A	3'-0"	7'-0"	SCWD	PT11	TEMPERED	1	HM	PT13	NR	3G	2A/S601	2A/S601	
127	127	FLEX	108	OPEN OFFICE	A	3'-0"	7'-0"	SCWD	PT11	NONE	1	HM	PT13	NR	3G	2A/S601	2A/S601	
129	129	TELEPHONE/DATA	108	OPEN OFFICE	A	3'-0"	7'-0"	SCWD	PT11	NONE	1	HM	PT13	NR	SH-3H	2A/S601	2A/S601	
131	131	HAC	105	CORRIDOR	A	3'-0"	7'-0"	SCWD	PT11	NONE	1	HM	PT13	NR	5D	2A/S601	2A/S601	
133	133	WOMEN	105	CORRIDOR	A	3'-0"	7'-0"	SCWD	PT2S	NONE	1	HM	PT13	NR	1	2A/S601	2A/S601	
135	135	MEN	105	CORRIDOR	A	3'-0"	7'-0"	SCWD	PT2S	NONE	1	HM	PT13	NR	1	2A/S601	2A/S601	
137	137	COMPUTER SERVER SECURE DATA STORAGE	108	OPEN OFFICE	A	3'-0"	7'-0"	SCWD	PT11	NONE	1	HM	PT13	NR	SH-3H	2A/S601	2A/S601	
138	138	MECHANICAL ROOM	J	3'-0"	7'-3"	HM	PT11	NONE	1	HM	PT13	NR			E3			
139	139	SECURITY ROOM	J	2'-6"	7'-3"	HM	PT11	NONE	1	HM	PT13	NR			SH-3J			
140	140	ELECTRICAL ROOM	J	3'-6"	7'-3"	HM	PT11	NONE	1	HM	PT13	NR			E4			
141	141	ELEVATOR MACHINE ROOM	140	ELECTRICAL ROOM	A	3'-0"	7'-0"	SCWD	PT11	NONE	1	HM	PT13	20 MIN	E4	2A/S601	2A/S601	
141A	141	ELEVATOR MACHINE ROOM	101	STAR #1	A	2'-6"	5'-0"	HM	PT2S	NONE	1	HM	PT13	20 MIN	5	2A/S601	2A/S601	
200	200	CORRIDOR	D	3'-0"	7'-0"	ALUMINUM/GLASS	FACTORY	TEMPERED	2	ALUMINUM	FACTORY	NR			E5			
200A	200	CORRIDOR	F	3'-0"	7'-4 3/4"	ALUMINUM/GLASS	ANODIZED	TEMPERED	3	ALUMINUM	ANODIZED	NR			E2			
200B	200	CORRIDOR	206	OPEN OFFICE	B	3'-0"	7'-0"	SCWD	PT11	TEMPERED	1	HM	PT13	NR	SH-3C	2A/S601	2A/S601	
202	202	BREAK ROOM	200	CORRIDOR	A	3'-0"	7'-0"	SCWD	PT2S	NONE	1	HM	PT13	NR	1	2A/S601	2A/S601	
204	204	MEETING AREA	200	CORRIDOR	A	3'-0"	7'-0"	SCWD	PT2S	NONE	1	HM	PT13	NR	4A	2A/S601	2A/S601	
205	205	WOMEN	200	CORRIDOR	A	3'-0"	7'-0"	PT	NONE	1	HM	PT	NR		1	2A/S601	2A/S601	
207	207	MEN	200	CORRIDOR	A	3'-0"	7'-0"	SCWD	PT	NONE	1	HM	PT	NR		1	2A/S601	2A/S601
211	211	TELEPHONE / DATA	200	CORRIDOR	A	3'-0"	7'-0"	SCWD	PT2S	NONE	1	HM	PT13	NR	SH-3H	2A/S601	2A/S601	
213	213	TESTING	200	CORRIDOR	A	3'-0"	7'-0"	SCWD	PT2S	NONE	1	HM	PT13	NR	3G	2A/S601	2A/S601	
215	215	TESTING	200	CORRIDOR	A	3'-0"	7'-0"	SCWD	PT2S	NONE	1	HM	PT13	NR	3G	2A/S601	2A/S601	
217	217	SECURE DATA STORAGE	206	OPEN OFFICE	B	3'-0"	7'-0"	SCWD	PT2S	NONE	1	HM	PT13	NR	SH-3J	2A/S601	2A/S601	
221	206	OPEN OFFICE	200	CORRIDOR	B	3'-0"	7'-0"	SCWD	PT11	TEMPERED	1	HM	PT13	NR	SH-3C	2A/S601	2A/S601	
225	206	OPEN OFFICE	200	CORRIDOR DOOR #2	F	3'-0"	7'-4 3/4"	ALUMINUM/GLASS	ANODIZED	TEMPERED	3	ALUMINUM	ANODIZED	NR	E2			
227	227	ELECTRICAL CLOSET	206	OPEN OFFICE	C	4'-0"	7'-0"	SCWD	PT11	NONE	4	HM	PT13	20 MIN		2A/S601	2A/S601	
229	229	HAC	206	OPEN OFFICE	A	3'-0"	7'-0"	SCWD	PT11	NONE	1	HM	PT13	NR	5D	2A/S601	2A/S601	
Grand total:																		

DOOR PANEL TYPES



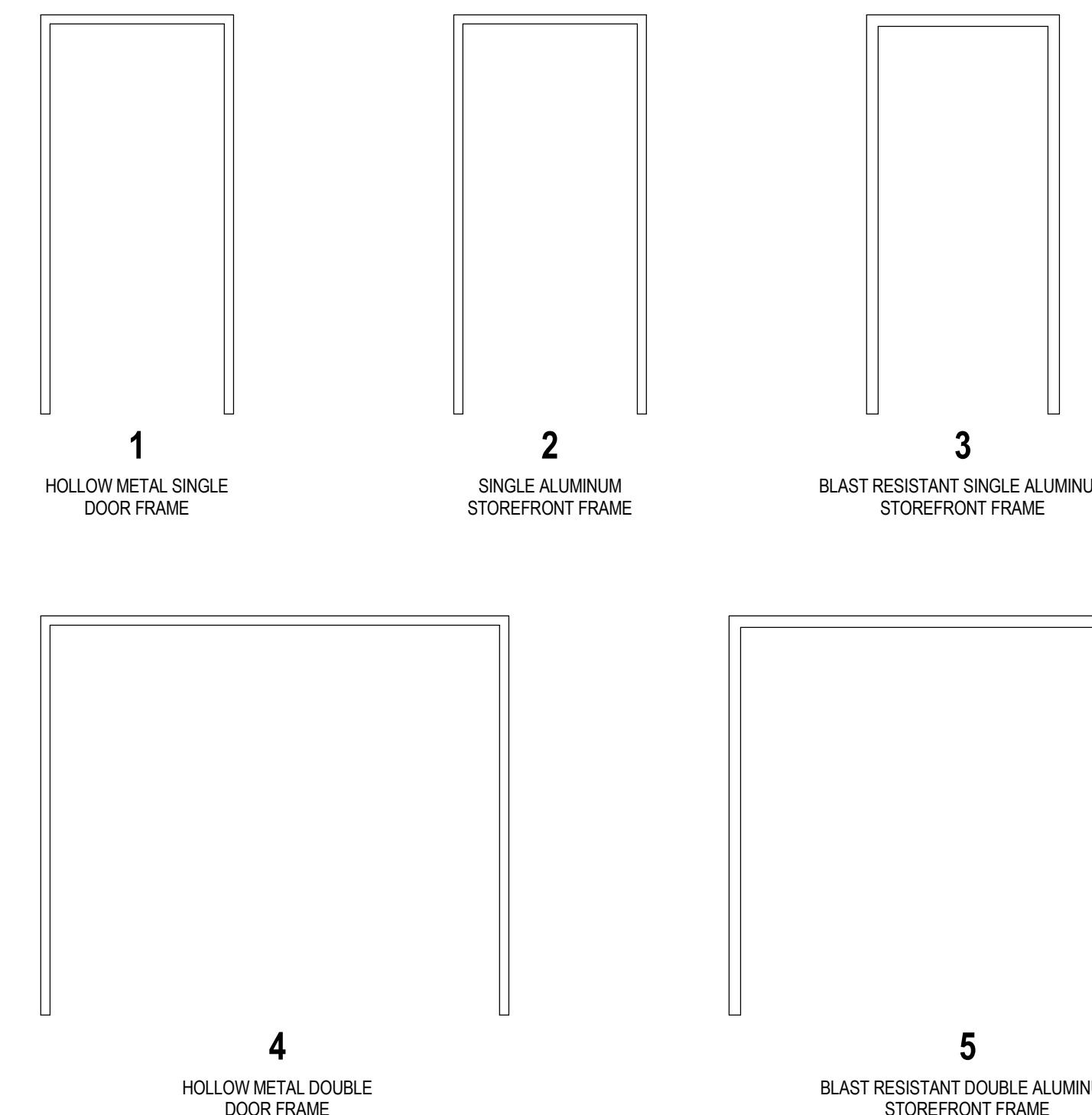
SCHEDULE ABBREVIATIONS

HM	HOLLOW METAL
SCWD	SOLID CORE WOOD DOOR
PT	PAIN
W	WIDTH
H	HEIGHT
PG	PAINT GRADE
ADO	AUTOMATIC DOOR OPENER
SS	STAINLESS STEEL
NR	NON RATED
STC	SOUND TRANSMISSION CLASS

DOOR NOTES

- | | |
|---|---|
| 1. DOOR DETAILS ARE TYPICAL & SHOW CONFIGURATION OF FRAMES; SEE PLANS FOR PARTITION TYPES AND ORIENTATION. SEE DOOR DEVICE ALIGNMENT DIAGRAM FOR DIMENSIONS AND DOOR FRAME. | 5. DOOR OPENINGS SHALL TYPICALLY BE 4 INCHES FROM FACE OF WALL UNLESS OTHERWISE NOTED. |
| 2. STANDARD STEEL FRAME PROJECTIONS FROM THE BASE WALL WILL BE 12 INCH. REFERENCED BASE JAMB AND HEAD DETAIL SHALL BE USED TO THE TOP OF THE FRAME. | 6. MAINTAIN 1/4" CLEAR ON THE PULL SIDE OF DOOR FOR ACCESS TO WHEEL CHAIR. |
| 3. REFER TO DETAILS 8.3 AND 8.3A5111 FOR OPENING BASES OF INTERIOR PARTITIONS AND BASE ATTACHMENT AT FLOOR. | 7. CLOSER REQUIRED: MAXIMUM EFFORT TO OPERATED DOOR SHALL NOT EXCEED 5 POUNDS FOR EXTERIOR AND INTERIOR DOORS. DO NOT TO EXCEED 10 POUNDS FOR WINDING. |
| 4. PROVIDE A KEY OR ANY SPECIAL KNOWLEDGE OF EXTERIOR, EXCEPT USING STANDARD EGRESS CONTROL DEVICE. | 8. SWEEP PERIOD: PERIOD OF CLOSURE SO THAT FROM AN OPEN POSITION OF 70 DEGREES, THE DOOR WILL TAKE AT LEAST 10 SECONDS TO MOVE TO A POSITION OF 10 DEGREES FROM AN OPEN POSITION OF 90 DEGREES, THE TIME REQUIRED TO MOVE THE DOOR TO A POSITION OF 12 DEGREES FROM 10 DEGREES WILL TAKE AT LEAST 10 SECONDS. |
| 5. PROVIDE ALL RATED DOORS ASSEMBLIES WITH APPROVED GASKETING MATERIAL INSTALLED TO PROVIDE A SEAL. WHERE THE CONTRACTOR DOES NOT REQUIRE A RATED DOOR, THE MANUFACTURER'S INSTALLATION INSTRUCTIONS SHALL BE AVAILABLE ON THE JOB SITE FOR ALL RATED DOOR. | 9. THIS SCHEDULE IS INCLUDED FOR THE CONVENIENCE OF THE CONTRACTOR ONLY. ERRORS AND OMISSIONS ON THE SCHEDULE DO NOT RELIEVE THE CONTRACTOR OF THE REQUIREMENT OF THE DRAWINGS AND SPECIFICATIONS. SEE SPECIFICATIONS FOR SUBMITTAL REQUIREMENTS. |
| 6. SECURITY DOORS: ALL DOORS WITH SECURITY DEVICES SHALL BE COORDINATED WITH THE REQUIREMENTS OF THE SECURITY SYSTEM. SECURITY DEVICES SHALL BE INSTALLED BY THE ARCHITECT REVIEW AND APPROVAL. | 10. SUBMIT DOOR AND WINDOW SCHEDULE FOR ARCHITECT REVIEW AND APPROVAL. |
| 7. COORDINATE AUTOMATIC SLIDING DOORS AND AUTOMATIC OPERATING SECURITY DOORS WITH THE ELECTRICAL CONTRACTOR. | 11. COORDINATE ADA AND HARDWARE WITH THE ELECTRICAL CONTRACTOR. SEE SECTION 26.0000 FOR ELECTRICAL. |
| | 12. SEE DETAIL #1 ON THIS SHEET FOR TYPICAL DEVICE |

DOOR FRAME TYPES



100% CONSTRUCTION DOCUMENT SUBMISSION
APRIL 20, 2015

[illegible]

CONSULTANTS:

ARCHITECT

POLYTECH ASSOCIATES INC.
235 Pine Street, 17th Floor
San Francisco, CA 94104
TEL (415) 397-3117
FAX (415) 397-1517



	Drawing Title
--	----------------------

DOOR SCHEDULE & DETAILS - NEW TBI BUILDING

Approved: Project Director

Project Title

NEUROCOG TBI RESEARCH BUILDING /

BUILDING R4 DEMOLITION / NEW TARI

150 MUIR ROAD, MARTINEZ, CA 94553

Date	Checked
04/30/2015	DIA

Project Number	612-125
----------------	---------

Building Number

AS601

AS60 I

Office of
Construction
and Facilities
Management

