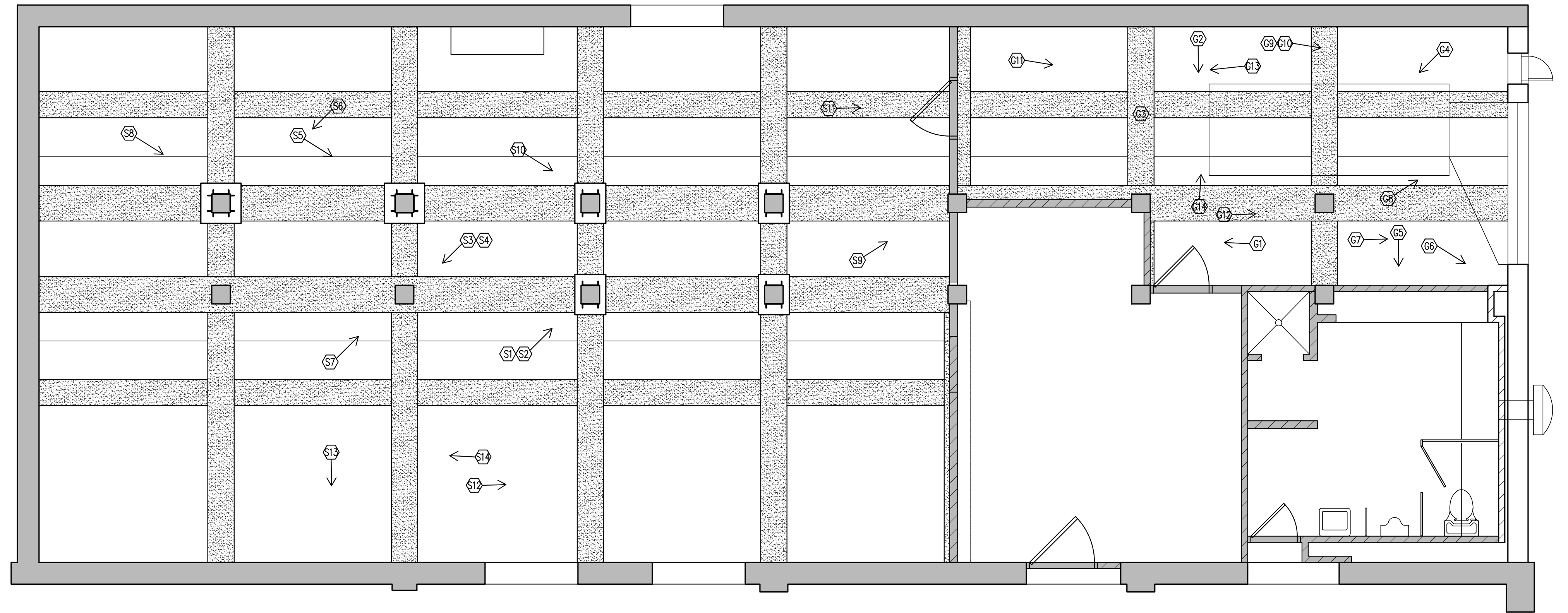


3 SHEET INDEX /PHASING
NTS

PHASING KEYED NOTES

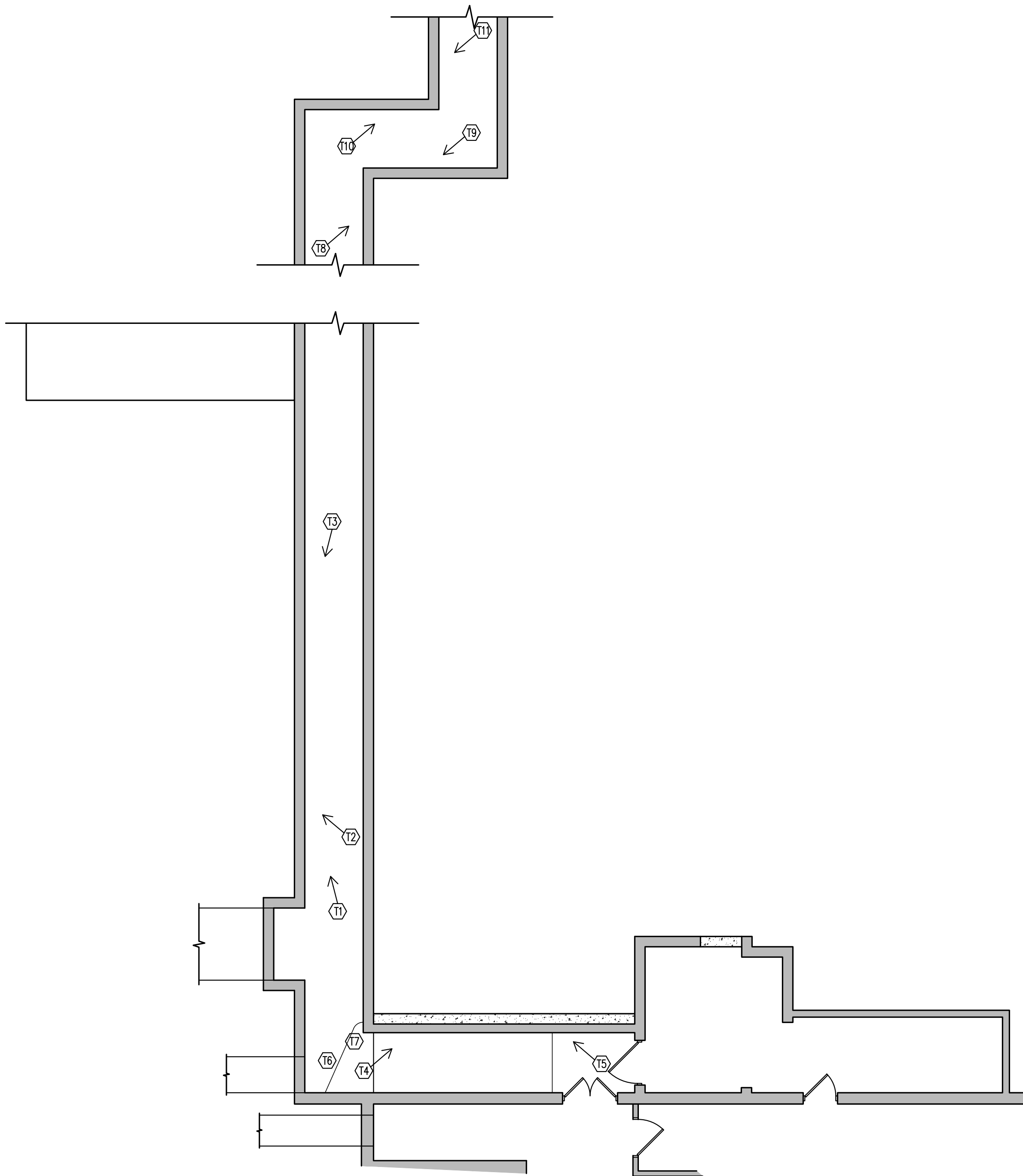
- 1 APPROXIMATE LOCATION OF CONSTRUCTION FENCING - COORDINATE EXACT LOCATION WITH COR.
- 2 MAINTAIN MINIMUM 12' WIDE, 1 WAY TRAFFIC DURING CONSTRUCTION, EXCEPT FOR MAXIMUM 2 WEEK PERIOD DURING EXCAVATION, WATERPROOFING, BACKFILL, AND PAVING OPERATIONS AT TUNNEL. COORDINATE 2 WEEK CLOSURE WITH COR.
- 3 APPROXIMATE LOCATION OF UNDERGROUND FUEL STORAGE TANKS - SET-UP OF CRANES AND OTHER HEAVY EQUIPMENT IS RESTRICTED FROM THIS AREA.
- 4 EMERGENCY GENERATOR MUST BE OPERATIONAL AT ALL TIMES. CONTRACTOR SHALL MODIFY EXISTING GENERATOR CONTROLS AS NECESSARY TO MAINTAIN FUNCTIONALITY THROUGHOUT CONSTRUCTION OPERATIONS. CONTRACTOR SHALL TEST EMERGENCY GENERATOR AFTER REMOVAL OF LOUVERS AND AFTER RE-INSTALLATION OF LOUVERS AT COMPLETION OF CONSTRUCTION OPERATIONS.
- 5 WORK WITHIN BUILDING 4 MECHANICAL ROOM IS LIMITED TO NON-HEATING MONTHS (JUNE 1 THROUGH SEPTEMBER 1). CONTRACTOR SHALL NOT TAKE EXISTING MECHANICAL SYSTEMS OFF LINE PRIOR TO JUNE 1, AND MUST ASSURE MECHANICAL SYSTEMS ARE OPERATIONAL PRIOR TO SEPTEMBER 1.



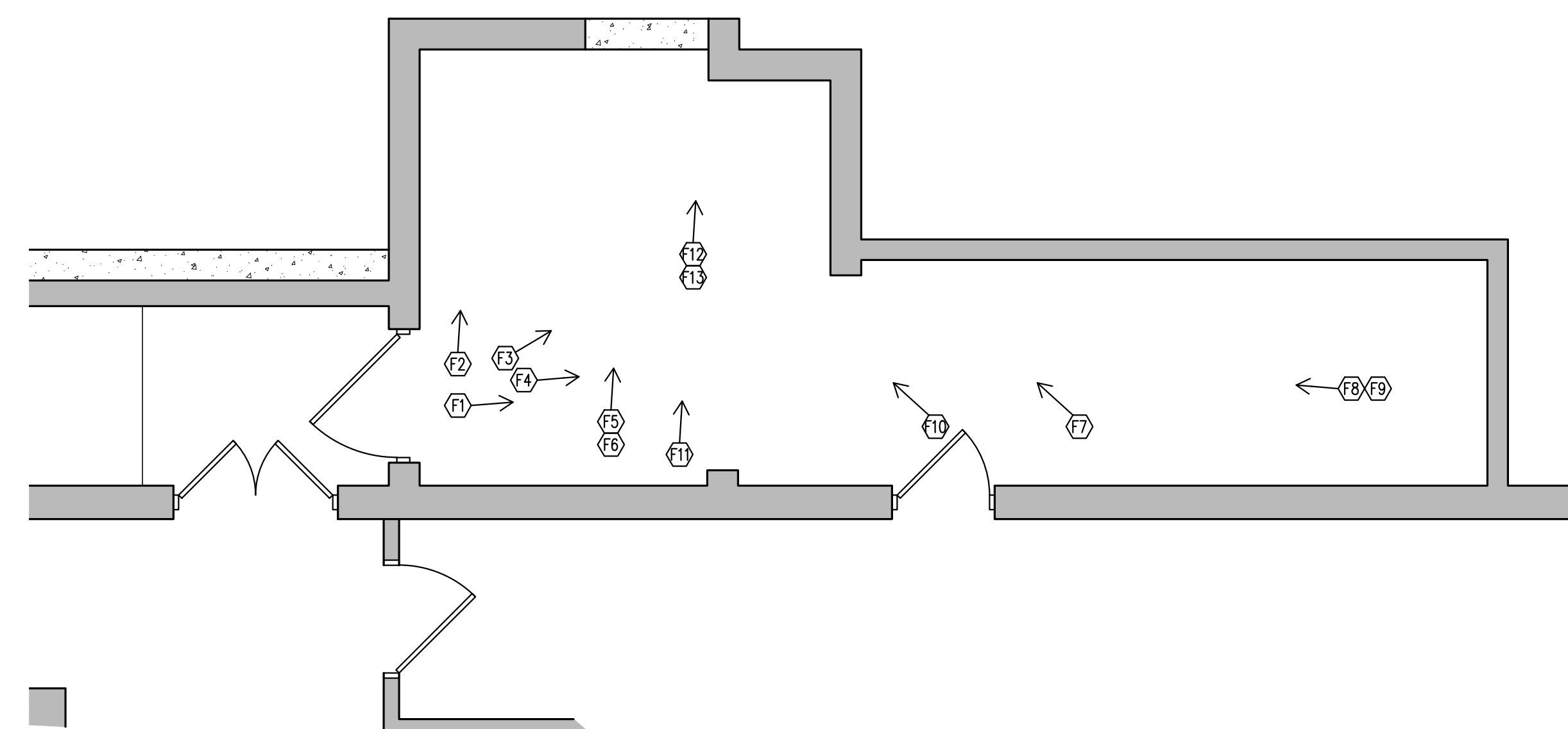
2 BUILDING 7 PHOTOS KEY PLAN
1/4"=1'-0"

KEY PLAN GENERAL NOTES

- A. REFER TO SPECIFICATION SECTION 00 31 10 - AVAILABLE PROJECT INFORMATION FOR PHOTOGRAPHS OF KEYED LOCATIONS.
- B. PHOTOGRAPHS REPRESENT CONDITIONS AT THE TIME THE PHOTOGRAPHS WERE TAKEN, AND MAY NOT NECESSARILY REPRESENT EXISTING CONDITIONS AT TIME OF CONSTRUCTION.



3 TUNNEL PHOTOS KEY PLAN
1/8"=1'-0"



4 BUILDING 4 PHOTOS KEY PLAN
1/4"=1'-0"

NO.	REVISION	DATE



701 Washington Ave. N, Ste 200 | Minneapolis, MN 55401 | 612.338.2029



TECHNICAL SERVICES AND CONSULTING
1225 TOWER AVE
SUPERIOR, WI 54880
715-392-1879

I HEREBY CERTIFY that this plan, specification or report was prepared by me or under my direct supervision and that I am a duly Licensed Architect under the laws of the State of Minnesota.
SIGNATURE: *Evan Alje*
TYPED OR PRINTED NAME: Evan Alje
DATE: 1/23/15 REG. NO.: 22827

APPROVED: SERVICE LINE DIRECTOR	DATE:	APPROVED: INFECTION CONTROL NURSE	DATE:
APPROVED: GEN. COORDINATOR	DATE:	APPROVED: PATIENT SAFETY	DATE:
APPROVED: PROJECTS SECTION MANAGER	DATE:	APPROVED: CHIEF OF POLICE	DATE:
APPROVED: DIRECTOR PHS	DATE:	APPROVED: SAFETY MANAGER	DATE:

DRAWING TITLE KEY PLANS	
APPROVED: ASSOCIATE HEALTH CARE SYSTEM DIRECTOR	DATE:
APPROVED: CHIEF OF STAFF	DATE:
APPROVED: HEALTH CARE SYSTEM DIRECTOR	DATE:

PROJECT TITLE 600-14-247 REPAIR FOUNDATIONS BUILDINGS A, 7, 59 24 Cloud VA Health Care System Main Campus, St. Cloud, Minnesota		FLYBY SCALE AS NOTED
BUILDING NO. COVER	DRAWN BY ECA	PROJECT NO.
LOCATION VA MEDICAL CENTER ST. CLOUD, MN 56303	DRAWING NO. G11.02 DWG. 2 OF 13	

