

STAIR FRAMING PLAN 3/8" = 1'-0"

PLAN NOTES

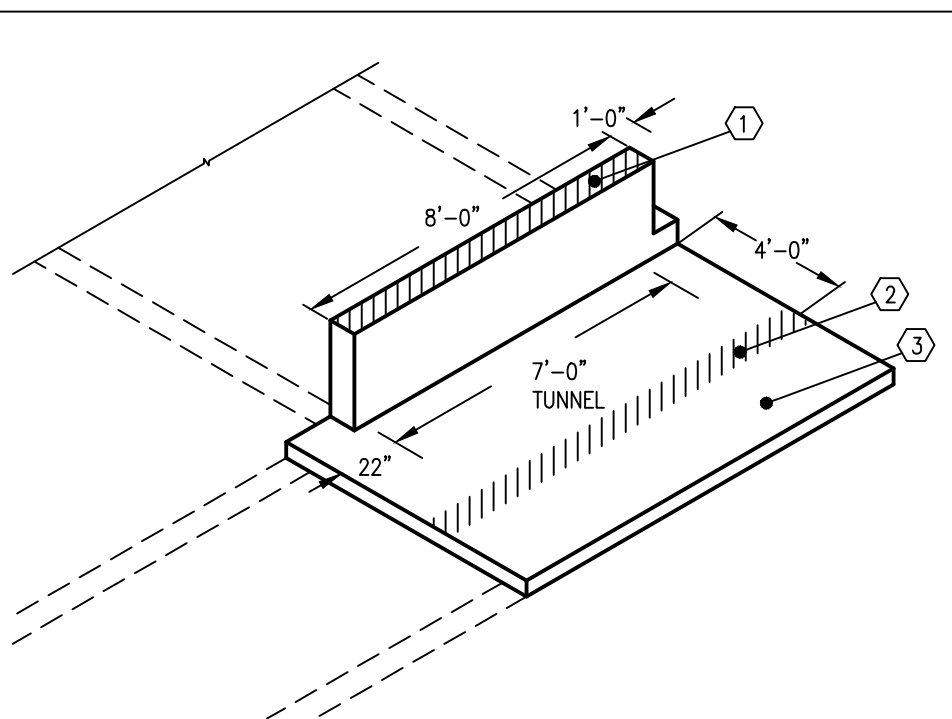
- (E) INDICATES EXISTING STRUCTURE
- * INDICATES DIMENSIONS TO BE VERIFIED BY CONTRACTOR
- REPAIR EXISTING CEILING CRACK WITH EPOXY INJECTION OR SIMILAR.
- SHORE EXISTING FLOOR ABOVE AS REQUIRED TO INSTALL NEW BEAMS AND DEMO EXISTING STRUCTURE.
- FOR STRUCTURAL GENERAL NOTES, SEE SHEET SS1.00
- INDICATES DIRECTION OF PRECAST SLAB
- (n) INDICATES NEW STRUCTURE
- (nP) INDICATES NEW PRECAST BEAM LOCATIONS. SEE A, B & C ON SHEET SS5.01 FOR SIZES AND LOCATIONS
- (A) INDICATES DIMENSIONS ARE ONLY ASSUMED, BUT NOT KNOWN. CONTRACTOR TO FIELD VERIFY IF NECESSARY FOR THE AREA OF WORK BEING PERFORMED
- ALL PRECAST SHALL BE DESIGNED BY A MINNESOTA REGISTERED ENGINEER. CALCULATIONS BEARING THE ENGINEER'S STAMP AND SIGNATURE SHALL ACCOMPANY THE SHOP DRAWINGS.

CRACK PREPARATION:

- CLEAN THE CRACK AND SURFACE SURROUNDING IT TO ALLOW EPOXY TO BOND TO SOUND CONCRETE.
- BRUSH THE SURFACE WITH A WIRE BRUSH AT A MIN.
- OIL, GREASE OR OTHER CONTAMINATES SHALL BE REMOVED PRIOR TO APPLICATION.
- TAKE CARE NOT TO IMPACT ANY DEBRIS INTO THE CRACK DURING CLEANING.
- BLOW OUT THE CRACK WITH CLEAN COMPRESSED AIR TO REMOVE ANY DUST, DEBRIS OR STANDING WATER.
- IF PAINT COATING OR SEALANT HAS BEEN APPLIED TO SURFACE, IT MUST BE REMOVED PRIOR TO EPOXY BEING APPLIED.
- APPLY EPOXY INJECTION PER MANUFACTURER.

PRECAST LOADS						
BEAM	DL1	DL2	LL1	LL2	SL	
nP1	200	200	450	100	75	
nP2	200	200	450	100	75	
SLAB	SEE SKETCH SHOWING LOADS					

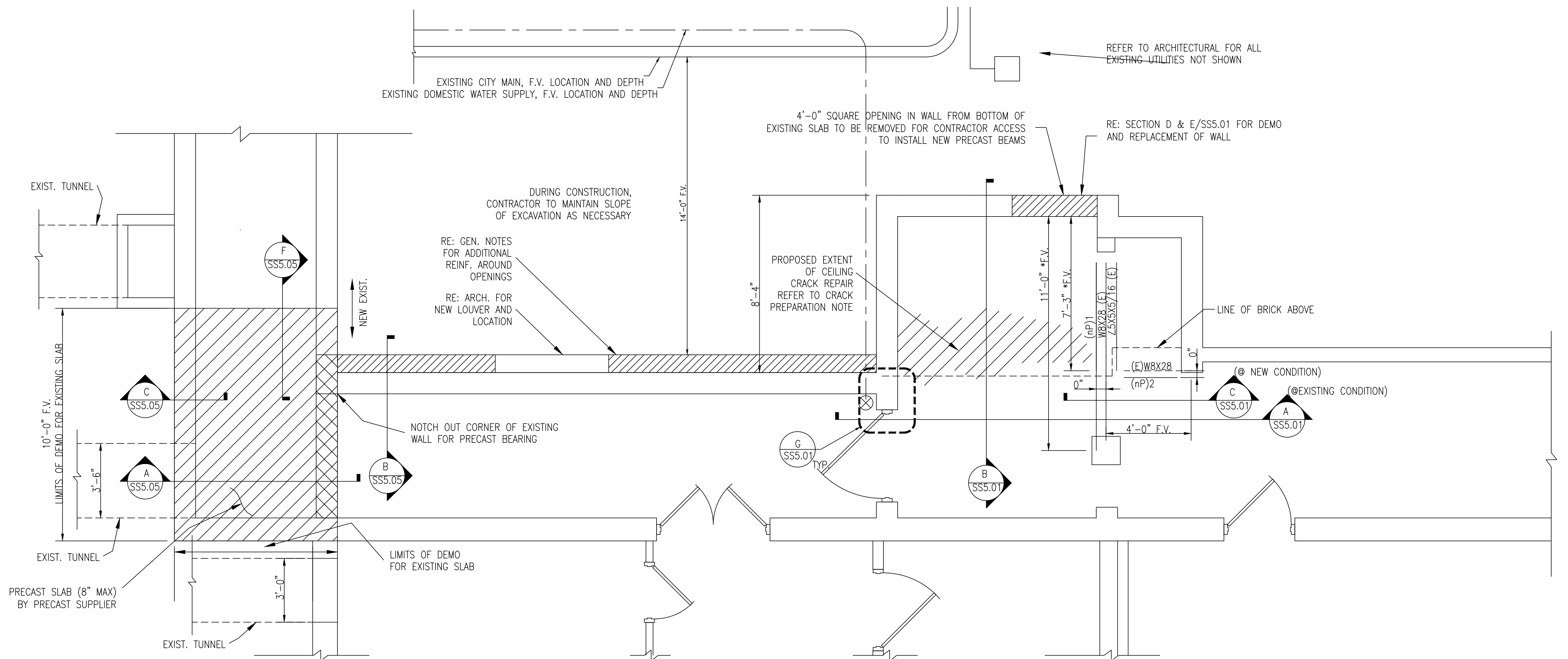
①		
DL1	200 PLF	
DL2	40 PLF	
DL3	80 PLF	
LL1	200 PLF (CORRIDOR)	
LL2	150 PLF (SNOW)	
LL2	200 PLF (ROOF AND FLOOR ABOVE)	
②	STAIR CONCRETE WALL	
DL1	500 PLF	
DL2	150 PLF	
LL1	200 PLF	
③		
DL1	75 PSF (SIDEWALK)	
LL2	250 PSF (POTENTIAL DRIVEWAY)	



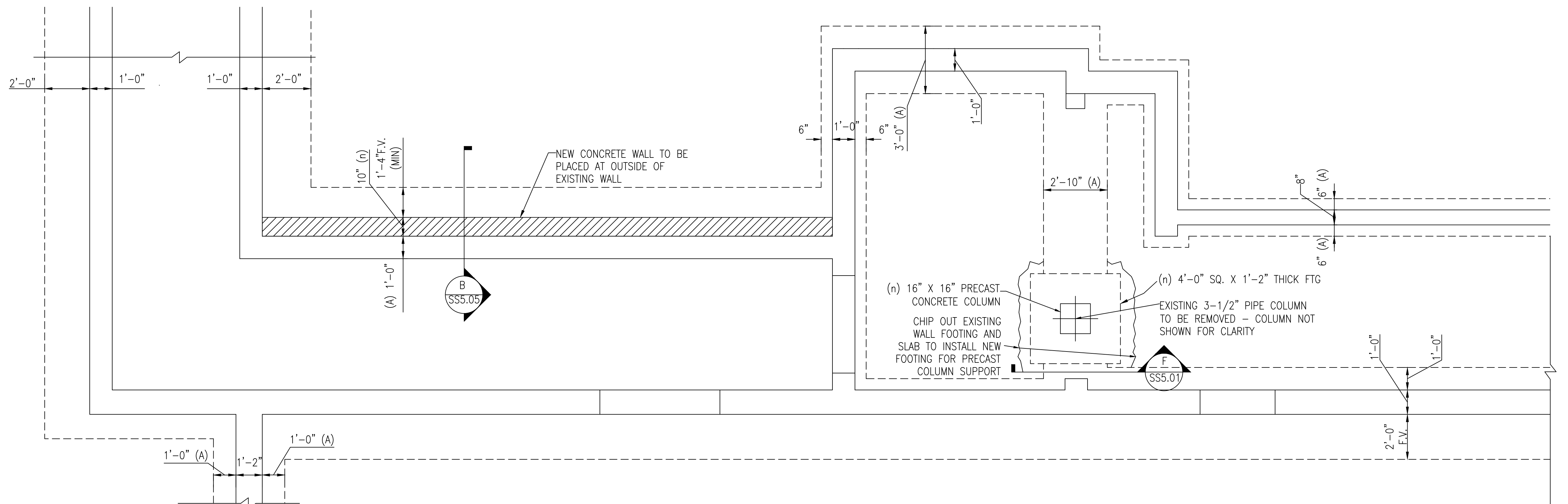
NOTE: LIMIT DEFLECTIONS TO < L/600 DUE TO BRICK LOADING

LOAD NOTES

- LOADS ARE SERVICE LOADS
- LOADS DO NOT INCLUDE SELF WEIGHT, SUPERIMPOSED LOADS ONLY
- SL INDICATES SNOW LOAD
- FOR nP2 MAINTAIN DEFLECTION OF < L/600 AS THERE IS BRICK ABOVE INCLUDED IN THE DL
- DL1 ROOF OR FLOOR DEAD LOADS
DL2 BRICK LINE LOADS
DL3 LIVE LOAD FROM CONCRETE WALLS FROM STAIR ABOVE
LL1 STORAGE LOAD FOR LOADING AND UNLOADING AT DOCK
LL2 CORRIDOR LOADING ABOVE
SL SNOW LOAD FROM ROOF ABOVE OR FROM LOADING DOCK
SLAB SEE SKETCH SHOWING LOADS

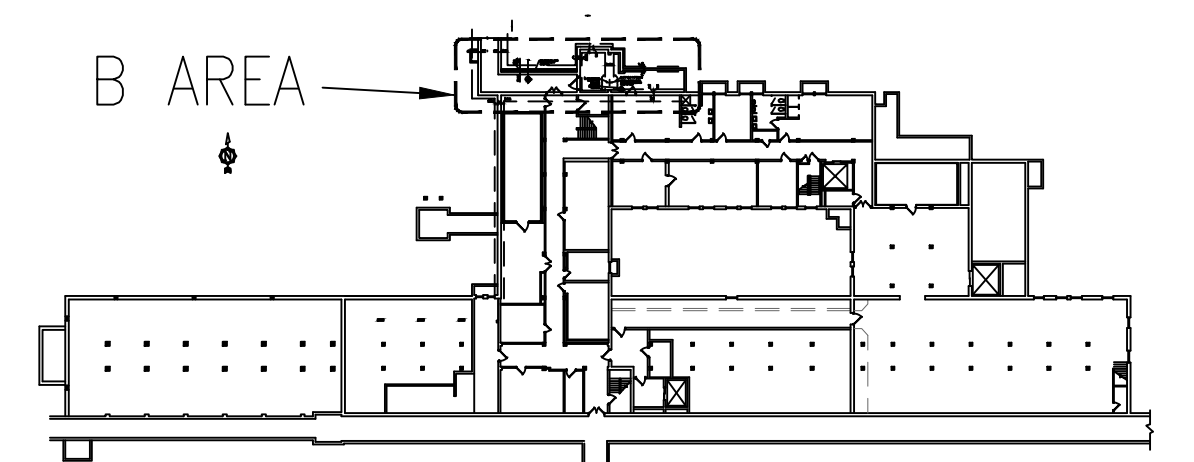


B AREA 3/8" = 1'-0"



B AREA FOUNDATION 3/8" = 1'-0"

NOTE:
CONTRACTOR TO FIELD VERIFY ALL DIMENSIONS FOR EXISTING FOUNDATIONS SHOWN PRIOR TO COMMENCING WORK. IF DIMENSIONS ARE DIFFERENT THAN WHAT ARE SHOWN, CONTACT THE STRUCTURAL ENGINEER OF RECORD IMMEDIATELY



BUILDING 4 KEY PLAN NTS

NO	REVISION	DATE



701 Washington Ave. N, Ste 200 | Minneapolis, MN 55401 | 612.338.2029



TECHNICAL SERVICES AND CONSULTING
1225 TOWER AVE
SUPERIOR, WI 54880
715-392-1879

I HEREBY CERTIFY that this plan, specification or report was prepared by me or under my direct supervision and that I am a duly Licensed Professional Engineer under the laws of the State of Minnesota.
SIGNATURE: *Shawna L. Kratsch*
TYPED OR PRINTED NAME: SHAWNIA L. KRATSCHE
DATE: 01/23/2015 REG. NO.: 50979

APPROVED: SERVICE LINE DIRECTOR	DATE:	APPROVED: INJECTION CONTROL NURSE	DATE:
APPROVED: GEMS COORDINATOR	DATE:	APPROVED: PATIENT SAFETY	DATE:
APPROVED: PROJECTS SECTION MANAGER	DATE:	APPROVED: CHIEF OF POLICE	DATE:
APPROVED: DIRECTOR FMS	DATE:	APPROVED: SAFETY MANAGER	DATE:

DRAWING TITLE BUILDING 4			
PROJECT TITLE 856-14-247 REPAIR FOUNDATIONS BUILDINGS 4, 7, 50 St. Cloud VA Health Care System Main Campus, St. Cloud, Minnesota			
PROJECT NO.			
APPROVED: ASSOCIATE HEALTH CARE SYSTEM DIRECTOR			
DATE:			
APPROVED: CHIEF OF STAFF			
DATE:			
APPROVED: HEALTH CARE SYSTEM DIRECTOR			
DATE:			
BUILDING NO 04	CHECKED BY SLK	DRAWN JMH	DRAWING NO. SS1.01
LOCATION VA MEDICAL CENTER ST. CLOUD, MN 56303	DATE: 01/23/2015		

