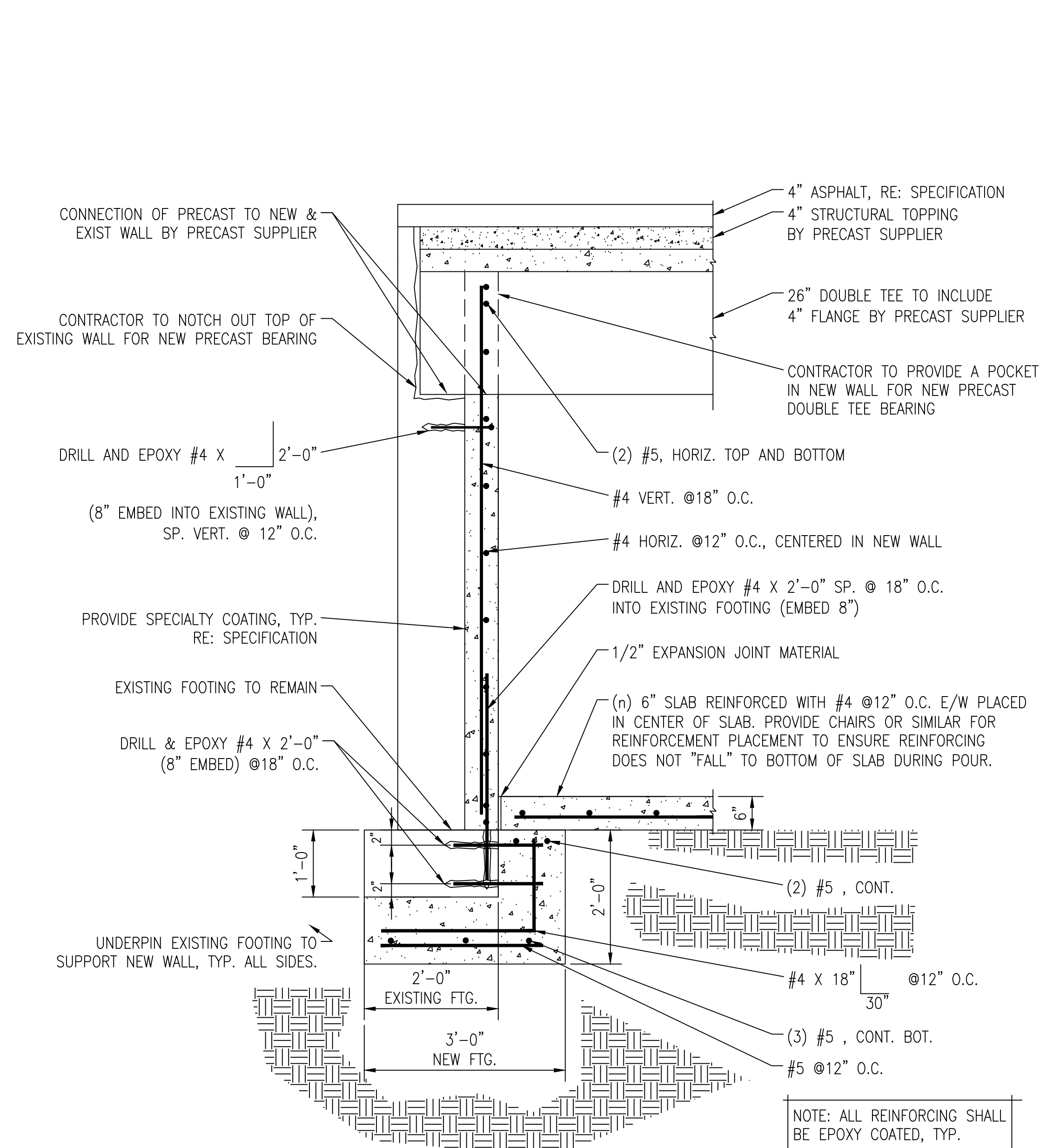
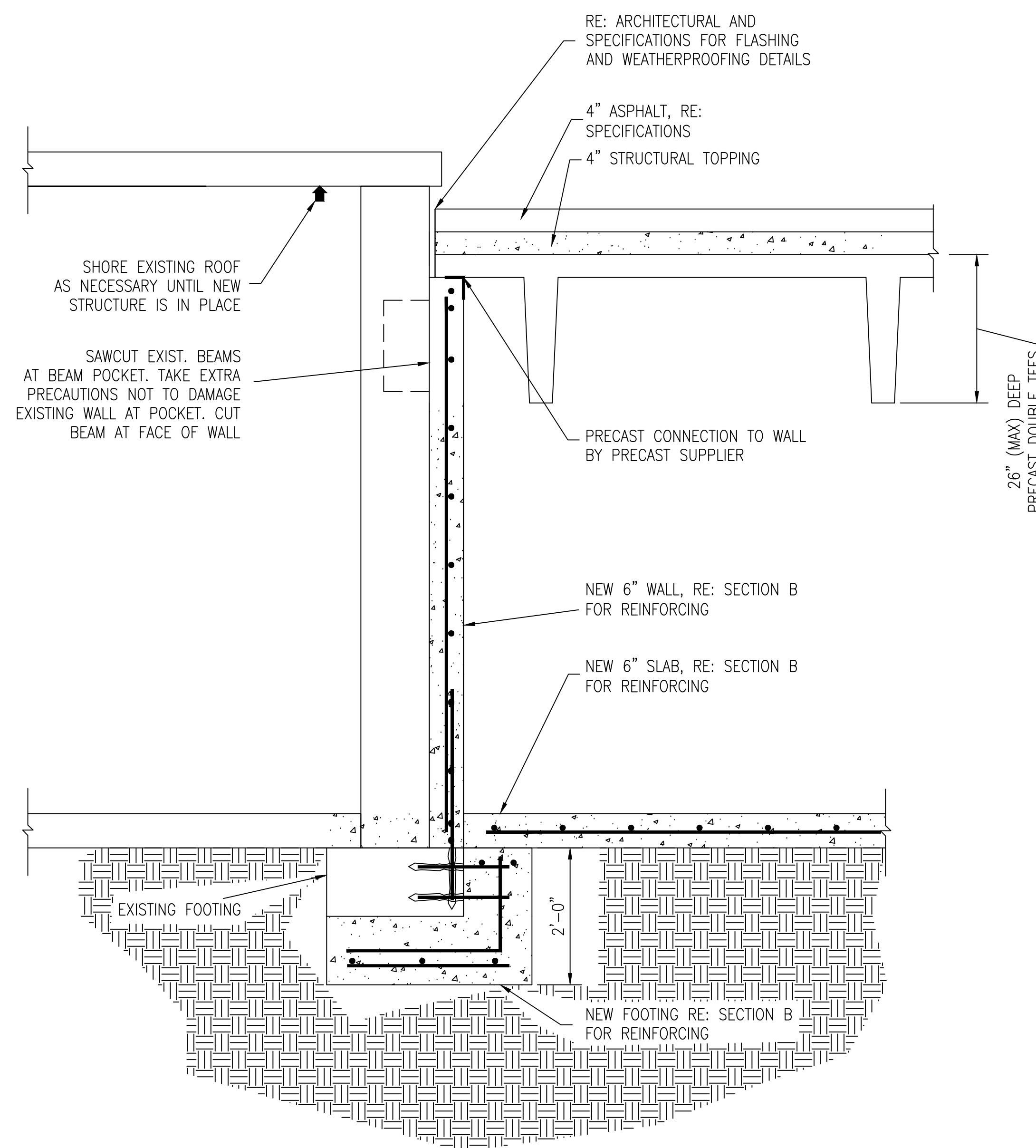


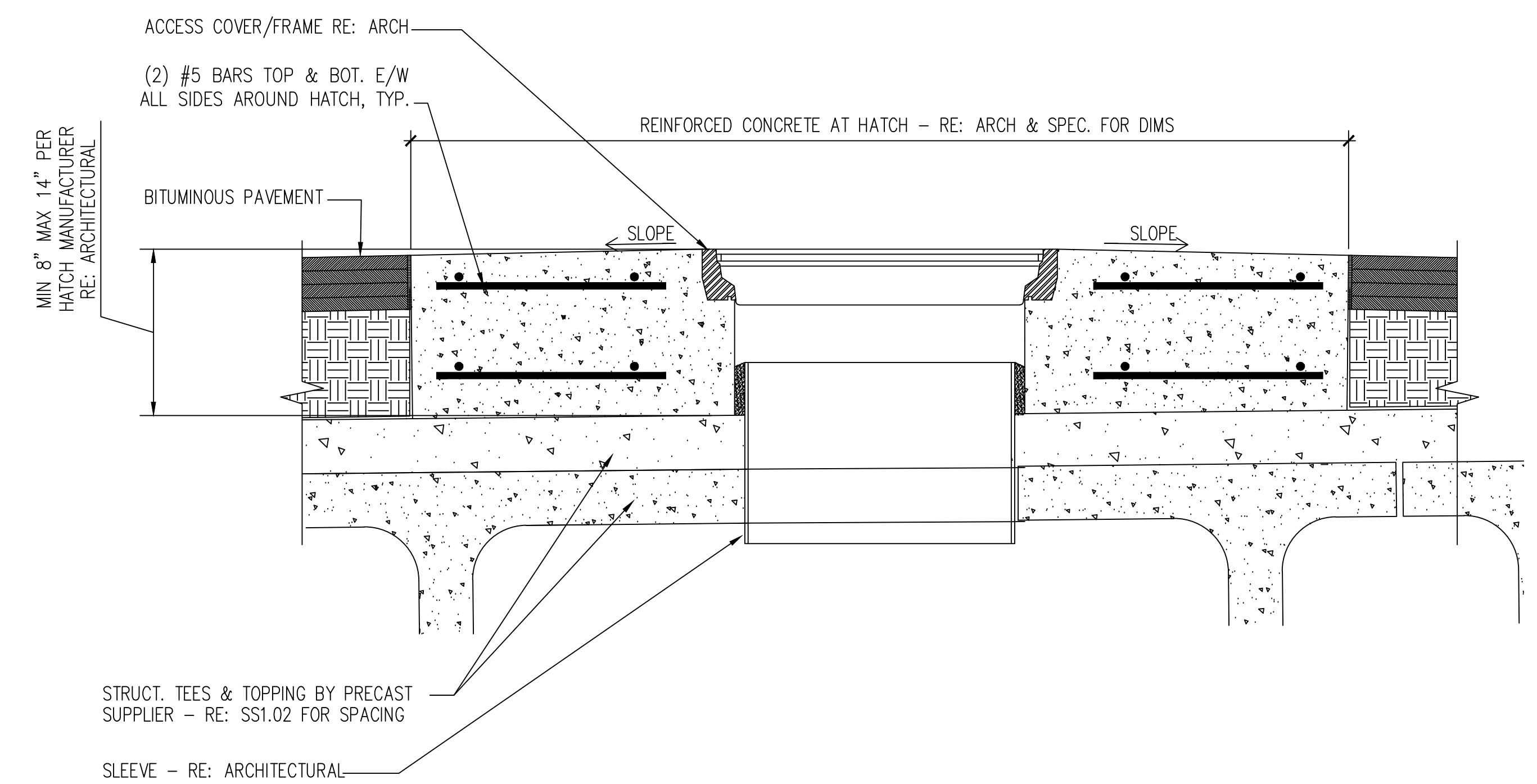
SECTION A $3/4" = 1'=-0"$
DEMOLITION SECTION ONLY



SECTION B $3/4" = 1'=-0"$
RE: SS1.02



SECTION C $3/4" = 1'=-0"$
RE: SS1.02



SECTION D $1-1/2" = 1'=-0"$
RE: SS1.02

NO	REVISION	DATE



701 Washington Ave. N, Ste 200 | Minneapolis, MN 55401 | 612.338.2029



TECHNICAL SERVICES AND CONSULTING
1225 TOWER AVE
SUPERIOR, WI 54880
715-392-1879

I HEREBY CERTIFY that this plan, specification or report was prepared by me or under my direct supervision and that I am a duly Licensed Professional Engineer under the laws of the State of Minnesota.
SIGNATURE: *[Signature]*
TYPED OR PRINTED NAME: SHAMINA L. KRATZSCH
DATE: 01/23/2015 REG. NO.: 50979

APPROVED: SERVICE LINE DIRECTOR	DATE:	APPROVED: INJECTION CONTROL NURSE	DATE:
APPROVED: GEAS COORDINATOR	DATE:	APPROVED: PATIENT SAFETY	DATE:
APPROVED: PROJECTS SECTION MANAGER	DATE:	APPROVED: CHIEF OF POLICE	DATE:
APPROVED: DIRECTOR FMS	DATE:	APPROVED: SAFETY MANAGER	DATE:

DRAWING TITLE BUILDING 7 DETAILS	PROJECT TITLE SS1-14-247 REPAIR FOUNDATIONS BUILDING 4, 7, 50 St. Cloud VA Health Care System Main Campus, St. Cloud, Minnesota
APPROVED: ASSOCIATE HEALTH CARE SYSTEM DIRECTOR DATE:	PROJECT NO.
APPROVED: CHIEF OF STAFF DATE:	BUILDING NO. 7
APPROVED: HEALTH CARE SYSTEM DIRECTOR DATE:	CHECKED BY SLK
	DRAWN JMH
	LOCATION VA MEDICAL CENTER ST. CLOUD, MN 56303
	DRAWING NO. SS1.02 (Rev. 15 of 17)



WARNING
LOCATION OF ALL UNDERGROUND UTILITIES SHALL BE VERIFIED BY THE CONTRACTOR.
CALL BEFORE DIGGING.
MINNESOTA
ONE-CALL SYSTEM
1-800-252-1166
REQUIRED BY
MN STATUTE 216D