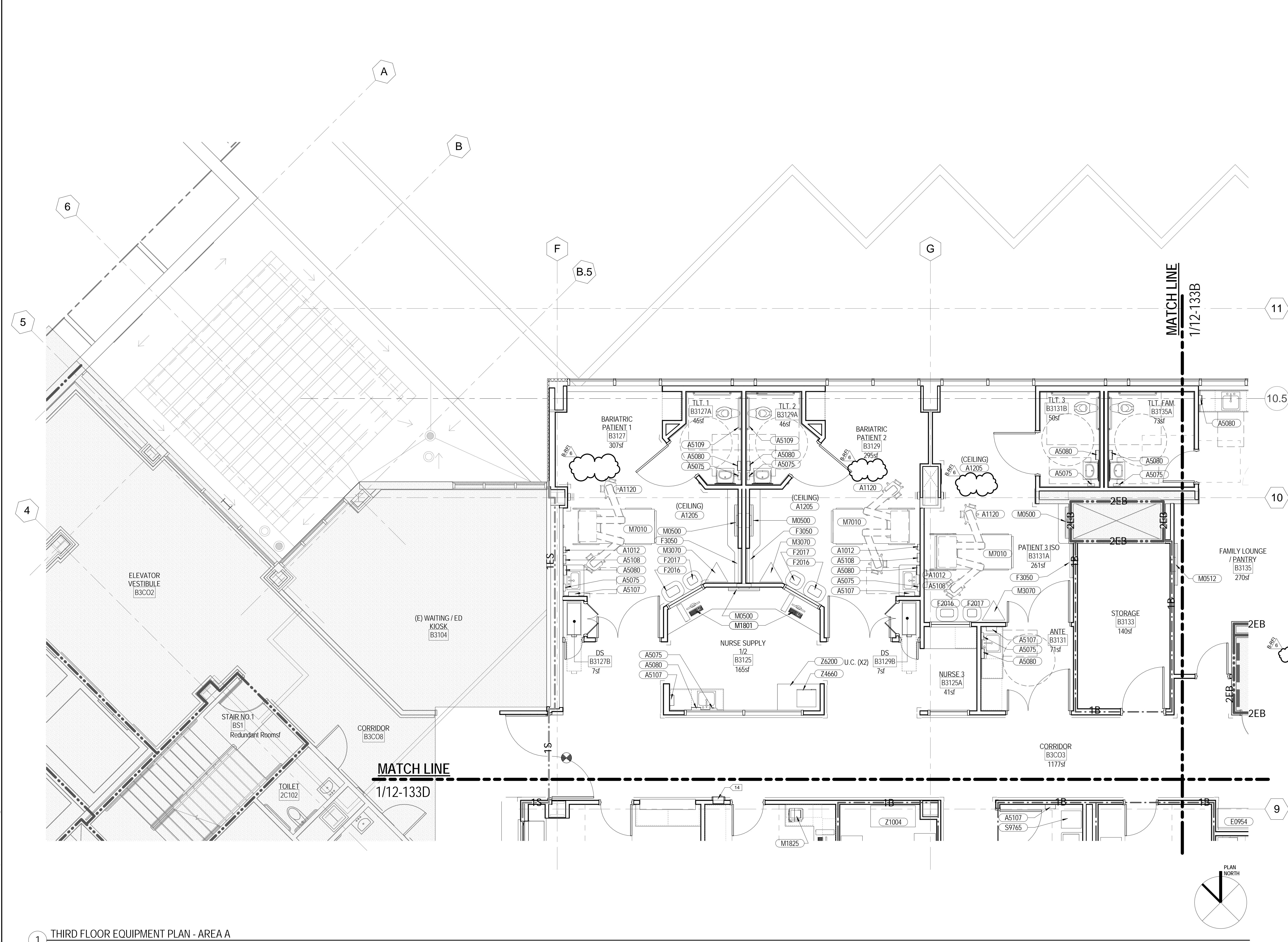


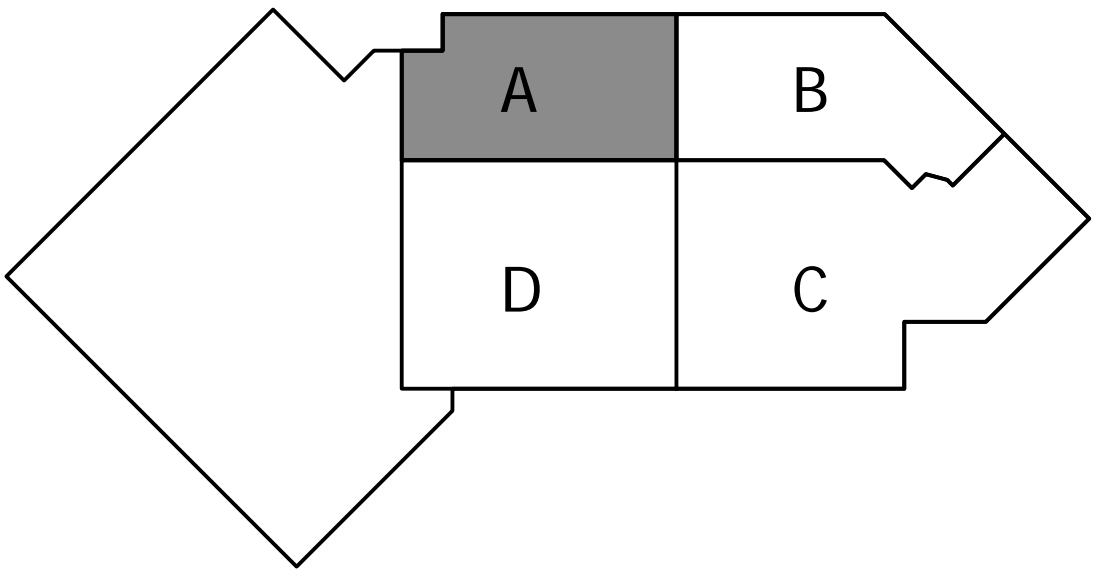
one eighth inch = one foot
one quarter inch = one foot
one half inch = one foot
three quarters inch = one foot
one inch = one foot
one and one half inch = one foot
two inch = one foot
three inch = one foot
four inch = one foot
five inch = one foot
six inch = one foot
seven inch = one foot
eight inch = one foot
nine inch = one foot
ten inch = one foot
eleven inch = one foot
twelve inch = one foot
thirteen inch = one foot
fourteen inch = one foot
fifteen inch = one foot
sixteen inch = one foot
seventeen inch = one foot
eighteen inch = one foot
nineteen inch = one foot
twenty inch = one foot
twenty one inch = one foot
twenty two inch = one foot
twenty three inch = one foot
twenty four inch = one foot
twenty five inch = one foot
twenty six inch = one foot
twenty seven inch = one foot
twenty eight inch = one foot
twenty nine inch = one foot
thirty inch = one foot
thirty one inch = one foot
thirty two inch = one foot
thirty three inch = one foot
thirty four inch = one foot
thirty five inch = one foot
thirty six inch = one foot
thirty seven inch = one foot
thirty eight inch = one foot
thirty nine inch = one foot
forty inch = one foot
forty one inch = one foot
forty two inch = one foot
forty three inch = one foot
forty four inch = one foot
forty five inch = one foot
forty six inch = one foot
forty seven inch = one foot
forty eight inch = one foot
forty nine inch = one foot
fifty inch = one foot
fifty one inch = one foot
fifty two inch = one foot
fifty three inch = one foot
fifty four inch = one foot
fifty five inch = one foot
fifty six inch = one foot
fifty seven inch = one foot
fifty eight inch = one foot
fifty nine inch = one foot
sixty inch = one foot
sixty one inch = one foot
sixty two inch = one foot
sixty three inch = one foot
sixty four inch = one foot
sixty five inch = one foot
sixty six inch = one foot
sixty seven inch = one foot
sixty eight inch = one foot
sixty nine inch = one foot
seventy inch = one foot
seventy one inch = one foot
seventy two inch = one foot
seventy three inch = one foot
seventy four inch = one foot
seventy five inch = one foot
seventy six inch = one foot
seventy seven inch = one foot
seventy eight inch = one foot
seventy nine inch = one foot
eighty inch = one foot
eighty one inch = one foot
eighty two inch = one foot
eighty three inch = one foot
eighty four inch = one foot
eighty five inch = one foot
eighty six inch = one foot
eighty seven inch = one foot
eighty eight inch = one foot
eighty nine inch = one foot
ninety inch = one foot
ninety one inch = one foot
ninety two inch = one foot
ninety three inch = one foot
ninety four inch = one foot
ninety five inch = one foot
ninety six inch = one foot
ninety seven inch = one foot
ninety eight inch = one foot
ninety nine inch = one foot
one hundred inch = one foot



A. REFER TO SHEET 12-605 EQUIPMENT SCHEDULE FOR ADDITIONAL INFORMATION

EQUIPMENT PLAN GENERAL NOTES
12' - 1'-0"

EQ. ID	EQUIPMENT DESCRIPTION	DETAILS
A1012	TELEPHONE, WALL-MOUNTED, 1-LINE	
A1015	TELEPHONE, DESK, MULTIPLE LINE	
A1030	LOCKER, 2 PERSON, OVER/UNDER	
A1120	COLUMN, SERVICE, PREFAB, SURGICAL, CEILING MOUNTED	5/12-522
A1205	LIFT SYSTEM, OVERHEAD, PATIENT ROOM W/BATH	5/12-S920
A5075	DISPENSER, SOAP, DISPOSABLE	12-S921
A5080	DISPENSER, PAPER TOWEL, SS, SURFACE MOUNTED	
A5107	DISPENSER, GLOVE, SURGICAL/EXAMINATION, WALL MOUNTED	
A5108	WASTE DISPOSAL UNIT, SHARPS	
A5109	GRAB BAR, 1-1/4" DIA., SS, 2 WALL, W/C ACCESSIBLE	13/12-521
A5135	SHELF, UTILITY W/ MOP/BROOM HOLDERS, SS, SURFACE MOUNTED	
A6200	UPS, THREE PHASE	
E0954	CART, EMERGENCY, MOBILE	
F0500	CART, JANITOR'S	
F0525	CART, SUPPLY	
F2000	BASKET, WASTEPAPER, ROUND, METAL	
F2016	WASTE RECEPTACLE, 40 GAL	
F2017	WASTE RECEPTACLE, 24 GAL (RED)	
F2020	CAN, TRASH, 44 GALLON	
F3050	MAGNETIC MARKERBOARD, GLASS	
K1552	BREWER, COFFEE, AUTO. ELECT, 3 BURNER, FRONT/BACK	
K4660	OVEN, MICROWAVE, HEAVY DUTY, 1000 WATTS	
L1931	ANALYZER, BLOOD GAS	
M0500	TELEVISION, COLOR, 20" DIAGONAL	
M0512	TELEVISION, HDTV, LARGE SCREEN, 60"	
M1801	COMPUTER, MICROPROCESSING, W/FLAT PANEL MONITOR	
M1810	COPIER, FLOOR STANDING, DIGITAL	
M1825	PRINTER, COMPUTER	
M2050	SHELVING, STORAGE	
M3070	HAMPER, LINEN, MOBILE, W/LID	
M3105	CABINET, 28-COUNT WARMER, SAGE PRODUCT	
M3150	DISTRIBUTION SYSTEM, MEDICATION, AUTOMATIC	
M7010	BED, PATIENT, ELECTRIC	
R4650	ICE MAKER, FLAKED, WITH DISPENSER	
R7250	REFRIGERATOR/FREEZER, 20 CUBIC FEET	
S9765	FLUSHER/DISINFECTOR, DISPOSAL, (MACERATORS-V40-310 VERNACARE)	
X4780	RADIOGRAPHIC UNIT, MOBILE, BATTERY	
Z1004	OMNI CELL STORAGE, 2-CELL CABINET, 4'-0"	
Z1006	OMNI CELL STORAGE, 3-CELL CABINET, 6'-0"	
Z3050	WHITEBOARD DRY ERASE - 3' x 4'	
Z4660	MICROWAVE, COMFORT PERSONAL CLEANING, SAGE PRODUCTS	
Z6200	REFRIGERATOR, DRAWER SYSTEM, RANDELL	



KEYMAP

Scale: As indicated

Office of
Construction
and Facilities
Management

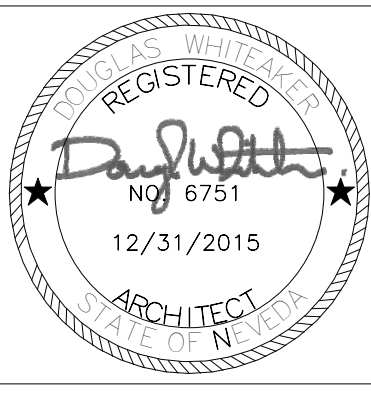


1 THIRD FLOOR EQUIPMENT PLAN - AREA A

1/4" = 1'-0"

CONSULTANTS:

ARCHITECT/ENGINEERS:



Architecture | Engineering | Planning
Hammel, Green and Abrahamson, Inc.
1410 Rocky Ridge Drive, Suite 250
Roseville, California USA 95661
Telephone 916.787.5100 Facsimile 916.784.7738
Contact: Douglas Whiteaker

Drawing Title
THIRD FLOOR EQUIPMENT PLAN - AREA A

Approved: Project Director

Project Title
WARD 2C REMODEL: INTENSIVE
CARE UNIT

Location 975 KIRMAN AVE.
RENO, NV 89520

Date
01/30/2015

Checked
Checker

Drawn
Author

Project Number
654-412

Building Number
12

Drawing Number
12-133A

Dwg. of

BIDDING RFI #6
Revisions:
8/6/2015
Date: