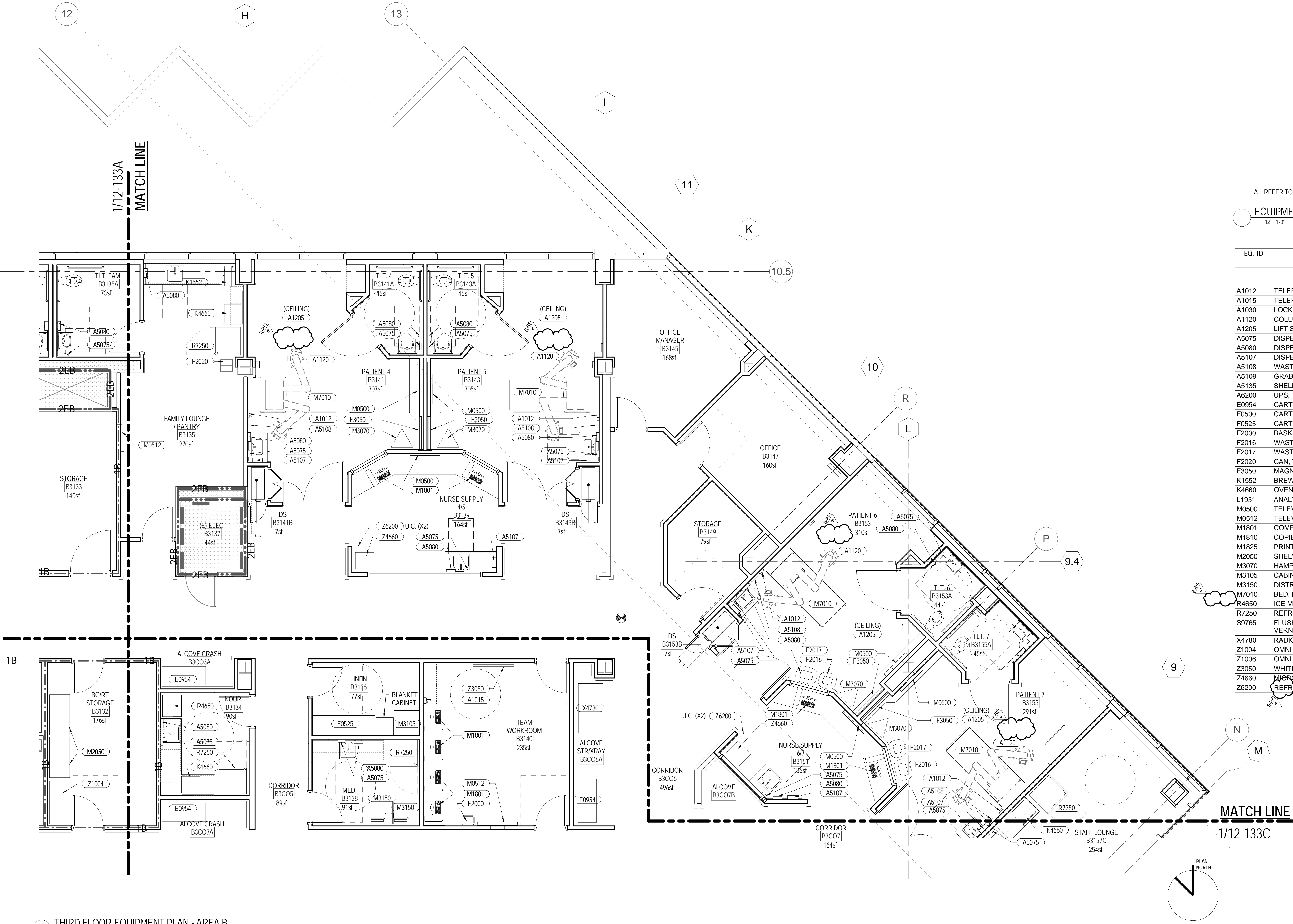


one eighth inch = one foot
one quarter inch = one foot
one half inch = one foot
three quarters inch = one foot
one inch = one foot
one and one half inch = one foot
two inches = one foot
three inches = one foot
four inches = one foot
five inches = one foot
six inches = one foot
seven inches = one foot
eight inches = one foot
nine inches = one foot
ten inches = one foot
eleven inches = one foot
twelve inches = one foot
thirteen inches = one foot
fourteen inches = one foot
fifteen inches = one foot
sixteen inches = one foot
seventeen inches = one foot
eighteen inches = one foot
nineteen inches = one foot
twenty inches = one foot
twenty one inches = one foot
twenty two inches = one foot
twenty three inches = one foot
twenty four inches = one foot
twenty five inches = one foot
twenty six inches = one foot
twenty seven inches = one foot
twenty eight inches = one foot
twenty nine inches = one foot
thirty inches = one foot
thirty one inches = one foot
thirty two inches = one foot
thirty three inches = one foot
thirty four inches = one foot
thirty five inches = one foot
thirty six inches = one foot
thirty seven inches = one foot
thirty eight inches = one foot
thirty nine inches = one foot
forty inches = one foot
forty one inches = one foot
forty two inches = one foot
forty three inches = one foot
forty four inches = one foot
forty five inches = one foot
forty six inches = one foot
forty seven inches = one foot
forty eight inches = one foot
forty nine inches = one foot
fifty inches = one foot
fifty one inches = one foot
fifty two inches = one foot
fifty three inches = one foot
fifty four inches = one foot
fifty five inches = one foot
fifty six inches = one foot
fifty seven inches = one foot
fifty eight inches = one foot
fifty nine inches = one foot
sixty inches = one foot
sixty one inches = one foot
sixty two inches = one foot
sixty three inches = one foot
sixty four inches = one foot
sixty five inches = one foot
sixty six inches = one foot
sixty seven inches = one foot
sixty eight inches = one foot
sixty nine inches = one foot
seventy inches = one foot
seventy one inches = one foot
seventy two inches = one foot
seventy three inches = one foot
seventy four inches = one foot
seventy five inches = one foot
seventy six inches = one foot
seventy seven inches = one foot
seventy eight inches = one foot
seventy nine inches = one foot
eighty inches = one foot
eighty one inches = one foot
eighty two inches = one foot
eighty three inches = one foot
eighty four inches = one foot
eighty five inches = one foot
eighty six inches = one foot
eighty seven inches = one foot
eighty eight inches = one foot
eighty nine inches = one foot
ninety inches = one foot
ninety one inches = one foot
ninety two inches = one foot
ninety three inches = one foot
ninety four inches = one foot
ninety five inches = one foot
ninety six inches = one foot
ninety seven inches = one foot
ninety eight inches = one foot
ninety nine inches = one foot
one hundred inches = one foot

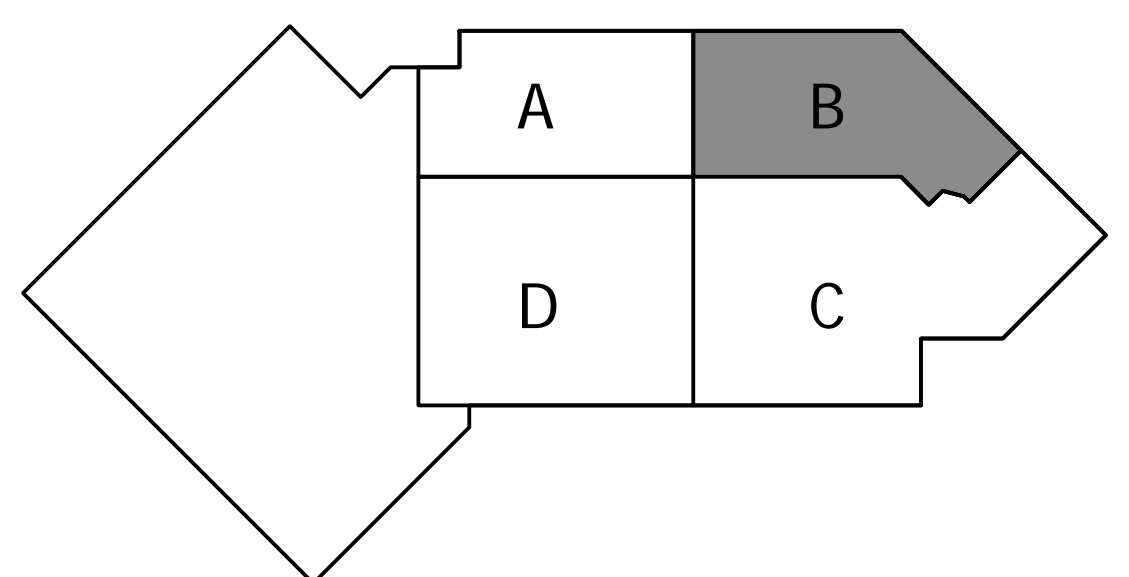


A. REFER TO SHEET 12-605 EQUIPMENT SCHEDULE FOR ADDITIONAL INFORMATION

EQUIPMENT PLAN GENERAL NOTES

12" = 1'-0"

EQ. ID	EQUIPMENT DESCRIPTION	DETAILS
A1012	TELEPHONE, WALL-MOUNTED, 1-LINE	
A1015	TELEPHONE, DESK, MULTIPLE LINE	
A1030	LOCKER, 2 PERSON, OVER/UNDER	
A1120	COLUMN, SERVICE, PREFAB, SURGICAL, CEILING MOUNTED	5/12-522
A1205	LIFT SYSTEM, OVERHEAD, PATIENT ROOM W/BATH	5/12-520
A5075	DISPENSER, SOAP, DISPOSABLE	12-S921
A5080	DISPENSER, PAPER TOWEL, SS, SURFACE MOUNTED	
A5107	DISPENSER, GLOVE, SURGICAL/EXAMINATION, WALL MOUNTED	
A5108	WASTE DISPOSAL UNIT, SHARPS	
A5109	GRAB BAR, 1-1/4" DIA., SS, 2 WALL, W/C ACCESSIBLE	13/12-521
A5135	SHELF, UTILITY W/ MOP/BROOM HOLDERS, SS, SURFACE MOUNTED	
A6200	UPS, THREE PHASE	
E0954	CART, EMERGENCY, MOBILE	
F0500	CART, JANITOR'S	
F0525	CART, SUPPLY	
F2000	BASKET, WASTE/PAPER, ROUND, METAL	
F2016	WASTE RECEPTACLE, 40 GAL	
F2017	WASTE RECEPTACLE, 24 GAL (RED)	
F2020	CAN, TRASH, 44 GALLON	
F3050	MAGNETIC MARKERBOARD, GLASS	
K1552	BREWER, COFFEE, AUTO. ELECT, 3 BURNER, FRONT/BACK	
K4660	OVEN, MICROWAVE, HEAVY DUTY, 1000 WATTS	
L1931	ANALYZER, BLOOD GAS	
M0500	TELEVISION, COLOR, 20" DIAGONAL	
M0512	TELEVISION, HDTV, LARGE SCREEN, 60"	
M1801	COMPUTER, MICROPROCESSING, W/FLAT PANEL MONITOR	
M1810	COPIER, FLOOR STANDING, DIGITAL	
M1825	PRINTER, COMPUTER	
M2050	SHELVING, STORAGE	
M3070	HAMPER, LINEN, MOBILE, W/LID	
M3105	CABINET, 28-COUNT WARMER, SAGE PRODUCT	
M3150	DISTRIBUTION SYSTEM, MEDICATION, AUTOMATIC	
M7010	BED, PATIENT, ELECTRIC	
R4650	ICE MAKER, FLAKED, WITH DISPENSER	
R7250	REFRIGERATOR/FREEZER, 20 CUBIC FEET	
S9765	FLUSHER/DISINFECTOR, DISPOSAL, (MACERATORS-V40-310 VERNACARE)	
X4780	RADIOGRAPHIC UNIT, MOBILE, BATTERY	
Z1004	OMNI CELL STORAGE, 2-CELL CABINET, 4'-0"	
Z1006	OMNI CELL STORAGE, 3-CELL CABINET, 6'-0"	
Z3050	WHITEBOARD DRY ERASE - 3' x 4'	
Z4660	MICROWAVE, COMBI FOR PERSONAL CLEANING, SAGE PRODUCTS	
Z6200	REFRIGERATOR, DRAWER SYSTEM, RANDELL	



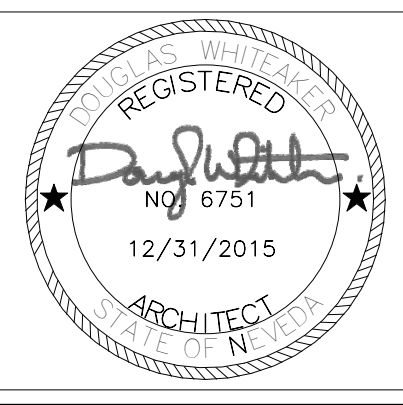
KEYMAP

Scale: As indicated

1 THIRD FLOOR EQUIPMENT PLAN - AREA B
1/4" = 1'-0"

CONSULTANTS:

ARCHITECT/ENGINEERS:



Architecture | Engineering | Planning
Hammel, Green and Abrahamson, Inc.
1410 Rocky Ridge Drive, Suite 250
Roseville, California USA 95661
Telephone 916.787.5100 Facsimile 916.784.7738
Contact: Douglas Whiteaker

Drawing Title
THIRD FLOOR EQUIPMENT PLAN - AREA B

Project Title
WARD 2C REMODEL: INTENSIVE CARE UNIT

Project Number
654-412

Building Number
12

Drawing Number
12-133B

Dwg. of

Office of
Construction
and Facilities
Management



BIDDING RFI #6
Revisions:
8/6/2015
Date:

Date
01/30/2015

Checked
Checker

Drawn
Author

12-133B