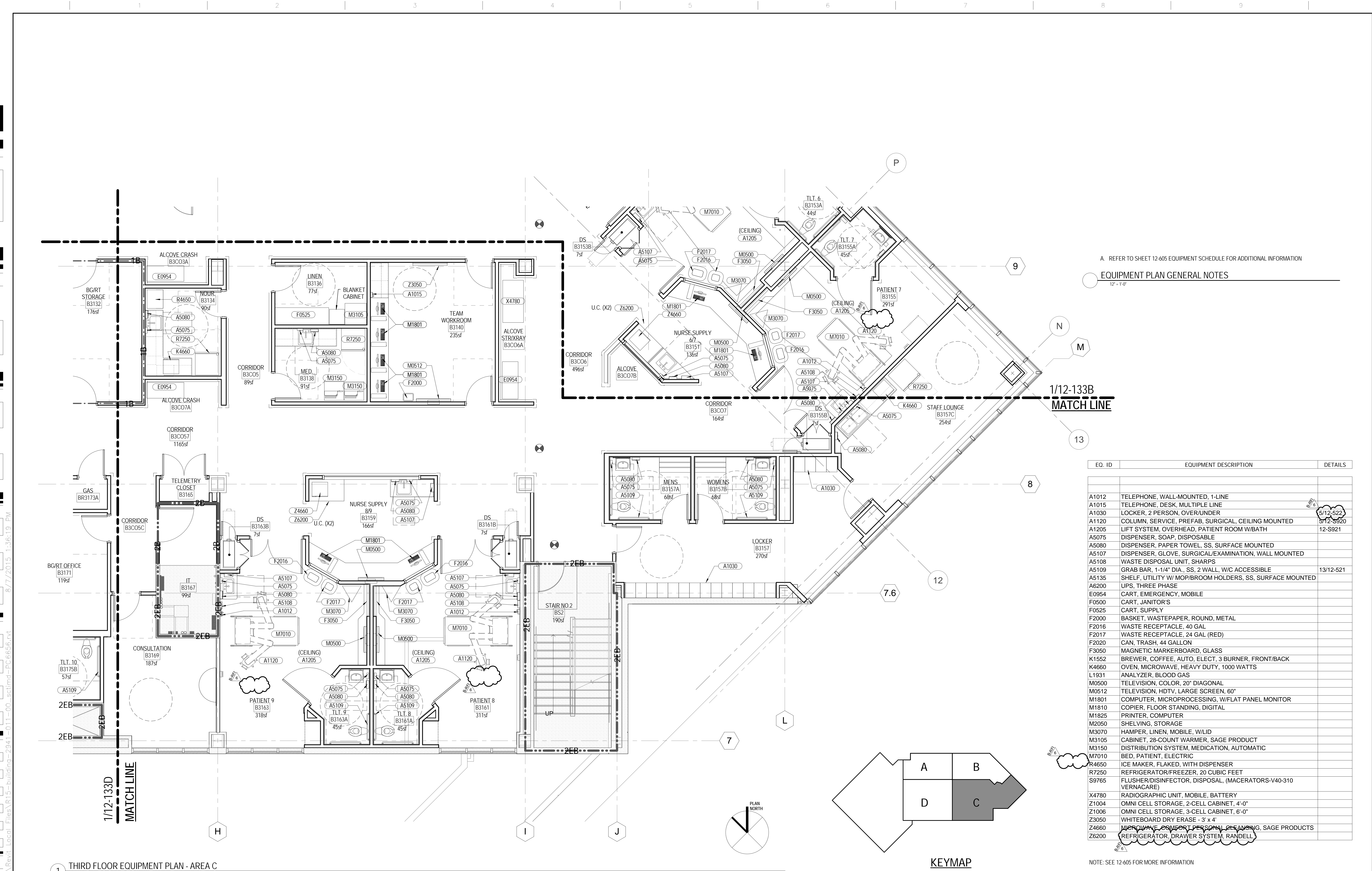


one eighth inch = one foot  
one quarter inch = one foot  
one half inch = one foot  
three quarters inch = one foot  
one inch = one foot  
one and one half inch = one foot  
two inches = one foot  
three inches = one foot  
four inches = one foot  
five inches = one foot  
six inches = one foot  
seven inches = one foot  
eight inches = one foot  
nine inches = one foot  
ten inches = one foot  
eleven inches = one foot  
twelve inches = one foot  
thirteen inches = one foot  
fourteen inches = one foot  
fifteen inches = one foot  
sixteen inches = one foot  
seventeen inches = one foot  
eighteen inches = one foot  
nineteen inches = one foot  
twenty inches = one foot  
twenty one inches = one foot  
twenty two inches = one foot  
twenty three inches = one foot  
twenty four inches = one foot  
twenty five inches = one foot  
twenty six inches = one foot  
twenty seven inches = one foot  
twenty eight inches = one foot  
twenty nine inches = one foot  
thirty inches = one foot  
thirty one inches = one foot  
thirty two inches = one foot  
thirty three inches = one foot  
thirty four inches = one foot  
thirty five inches = one foot  
thirty six inches = one foot  
thirty seven inches = one foot  
thirty eight inches = one foot  
thirty nine inches = one foot  
forty inches = one foot  
forty one inches = one foot  
forty two inches = one foot  
forty three inches = one foot  
forty four inches = one foot  
forty five inches = one foot  
forty six inches = one foot  
forty seven inches = one foot  
forty eight inches = one foot  
forty nine inches = one foot  
fifty inches = one foot  
fifty one inches = one foot  
fifty two inches = one foot  
fifty three inches = one foot  
fifty four inches = one foot  
fifty five inches = one foot  
fifty six inches = one foot  
fifty seven inches = one foot  
fifty eight inches = one foot  
fifty nine inches = one foot  
sixty inches = one foot  
sixty one inches = one foot  
sixty two inches = one foot  
sixty three inches = one foot  
sixty four inches = one foot  
sixty five inches = one foot  
sixty six inches = one foot  
sixty seven inches = one foot  
sixty eight inches = one foot  
sixty nine inches = one foot  
seventy inches = one foot  
seventy one inches = one foot  
seventy two inches = one foot  
seventy three inches = one foot  
seventy four inches = one foot  
seventy five inches = one foot  
seventy six inches = one foot  
seventy seven inches = one foot  
seventy eight inches = one foot  
seventy nine inches = one foot  
eighty inches = one foot  
eighty one inches = one foot  
eighty two inches = one foot  
eighty three inches = one foot  
eighty four inches = one foot  
eighty five inches = one foot  
eighty six inches = one foot  
eighty seven inches = one foot  
eighty eight inches = one foot  
eighty nine inches = one foot  
ninety inches = one foot  
ninety one inches = one foot  
ninety two inches = one foot  
ninety three inches = one foot  
ninety four inches = one foot  
ninety five inches = one foot  
ninety six inches = one foot  
ninety seven inches = one foot  
ninety eight inches = one foot  
ninety nine inches = one foot  
one hundred inches = one foot



A. REFER TO SHEET 12-605 EQUIPMENT SCHEDULE FOR ADDITIONAL INFORMATION

EQUIPMENT PLAN GENERAL NOTES

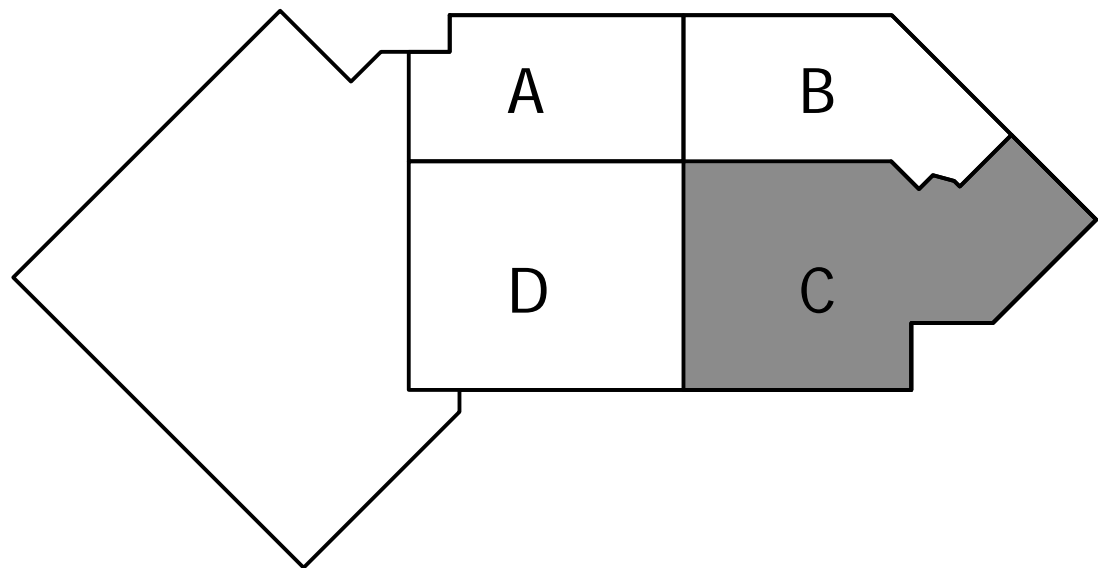
12" = 1'-0"

1/12-133B  
MATCH LINE

EQ. ID	EQUIPMENT DESCRIPTION	DETAILS
A1012	TELEPHONE, WALL-MOUNTED, 1-LINE	
A1015	TELEPHONE, DESK, MULTIPLE LINE	
A1030	LOCKER, 2 PERSON, OVER/UNDER	5/12-522
A1120	COLUMN, SERVICE, PREFAB, SURGICAL, CEILING MOUNTED	5/12-S920
A1205	LIFT SYSTEM, OVERHEAD, PATIENT ROOM W/BATH	12-S921
A5075	DISPENSER, SOAP, DISPOSABLE	
A5080	DISPENSER, PAPER TOWEL, SS, SURFACE MOUNTED	
A5107	DISPENSER, GLOVE, SURGICAL/EXAMINATION, WALL MOUNTED	
A5108	WASTE DISPOSAL UNIT, SHARPS	
A5109	GRAB BAR, 1-1/4" DIA., SS, 2 WALL, W/C ACCESSIBLE	13/12-521
A5135	SHELF, UTILITY W/ MOP/BROOM HOLDERS, SS, SURFACE MOUNTED	
A6200	UPS, THREE PHASE	
E0954	CART, EMERGENCY, MOBILE	
F0500	CART, JANITOR'S	
F0525	CART, SUPPLY	
F2000	BASKET, WASTEPAPER, ROUND, METAL	
F2016	WASTE RECEPTACLE, 40 GAL	
F2017	WASTE RECEPTACLE, 24 GAL (RED)	
F2020	CAN, TRASH, 44 GALLON	
F3050	MAGNETIC MARKERBOARD, GLASS	
K1552	BREWER, COFFEE, AUTO, ELECT, 3 BURNER, FRONT/BACK	
K4660	OVEN, MICROWAVE, HEAVY DUTY, 1000 WATTS	
L1931	ANALYZER, BLOOD GAS	
M0500	TELEVISION, COLOR, 20" DIAGONAL	
M0512	TELEVISION, HDTV, LARGE SCREEN, 60"	
M1801	COMPUTER, MICROPROCESSING, W/FLAT PANEL MONITOR	
M1810	COPIER, FLOOR STANDING, DIGITAL	
M1825	PRINTER, COMPUTER	
M2050	SHELVING, STORAGE	
M3070	HAMPER, LINEN, MOBILE, W/LID	
M3105	CABINET, 28-COUNT WARMER, SAGE PRODUCT	
M3150	DISTRIBUTION SYSTEM, MEDICATION, AUTOMATIC	
M7010	BED, PATIENT, ELECTRIC	
R4650	ICE MAKER, FLAKED, WITH DISPENSER	
R7250	REFRIGERATOR/FREEZER, 20 CUBIC FEET	
S9765	FLUSHER/DISINFECTOR, DISPOSAL, (MACERATORS-V40-310 VERNACARE)	
X4780	RADIOGRAPHIC UNIT, MOBILE, BATTERY	
Z1004	OMNI CELL STORAGE, 2-CELL CABINET, 4'-0"	
Z1006	OMNI CELL STORAGE, 3-CELL CABINET, 6'-0"	
Z3050	WHITEBOARD DRY ERASE - 3' x 4'	
Z4660	REFRIGERATOR, COMFORT PERSONAL CLEANING, SAGE PRODUCTS	
Z6200	REFRIGERATOR, DRAWER SYSTEM, RANDALL	

NOTE: SEE 12-605 FOR MORE INFORMATION

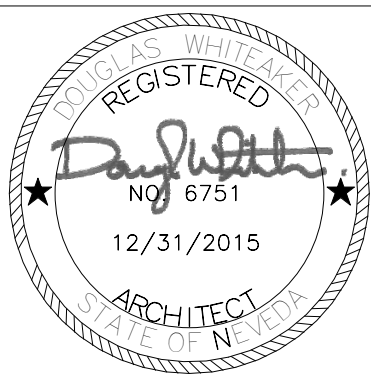
KEYMAP



1 THIRD FLOOR EQUIPMENT PLAN - AREA C  
1/4" = 1'-0"

CONSULTANTS:

ARCHITECT/ENGINEERS:



Architecture | Engineering | Planning  
Hammel, Green and Abrahamson, Inc.  
1410 Rocky Ridge Drive, Suite 250  
Roseville, California USA 95661  
Telephone 916.787.5100 Facsimile 916.784.7738  
Contact: Douglas Whiteaker

Drawing Title  
THIRD FLOOR EQUIPMENT PLAN - AREA C

Approved: Project Director

Project Title  
WARD 2C REMODEL: INTENSIVE CARE UNIT

Location  
975 KIRMAN AVE.  
RENO, NV 89520

Date  
01/30/2015

Checked  
Checker

Drawn  
Author

Project Number  
654-412

Building Number  
12

Drawing Number  
12-133C

Dwg. of

Office of  
Construction  
and Facilities  
Management

Department of  
Veterans Affairs

Scale: As indicated