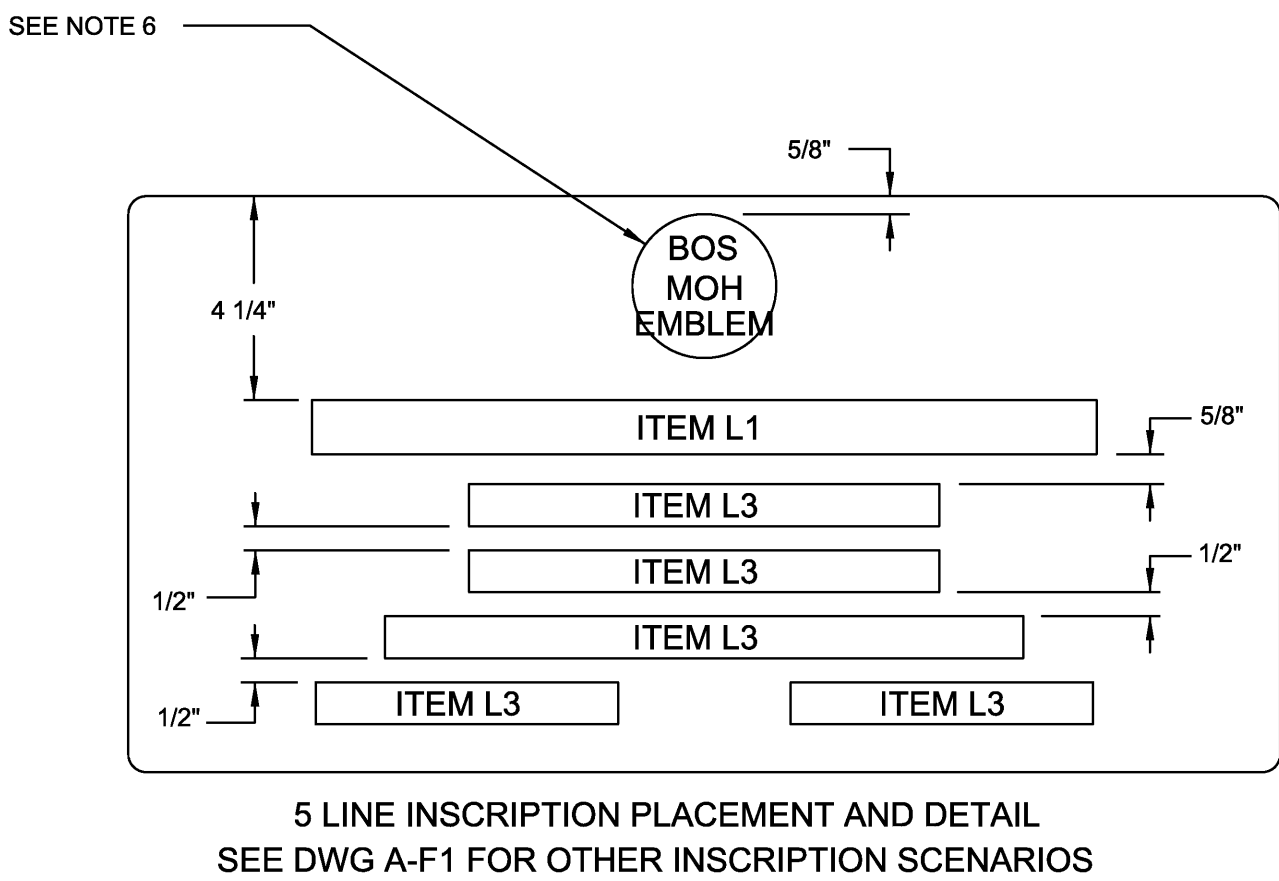
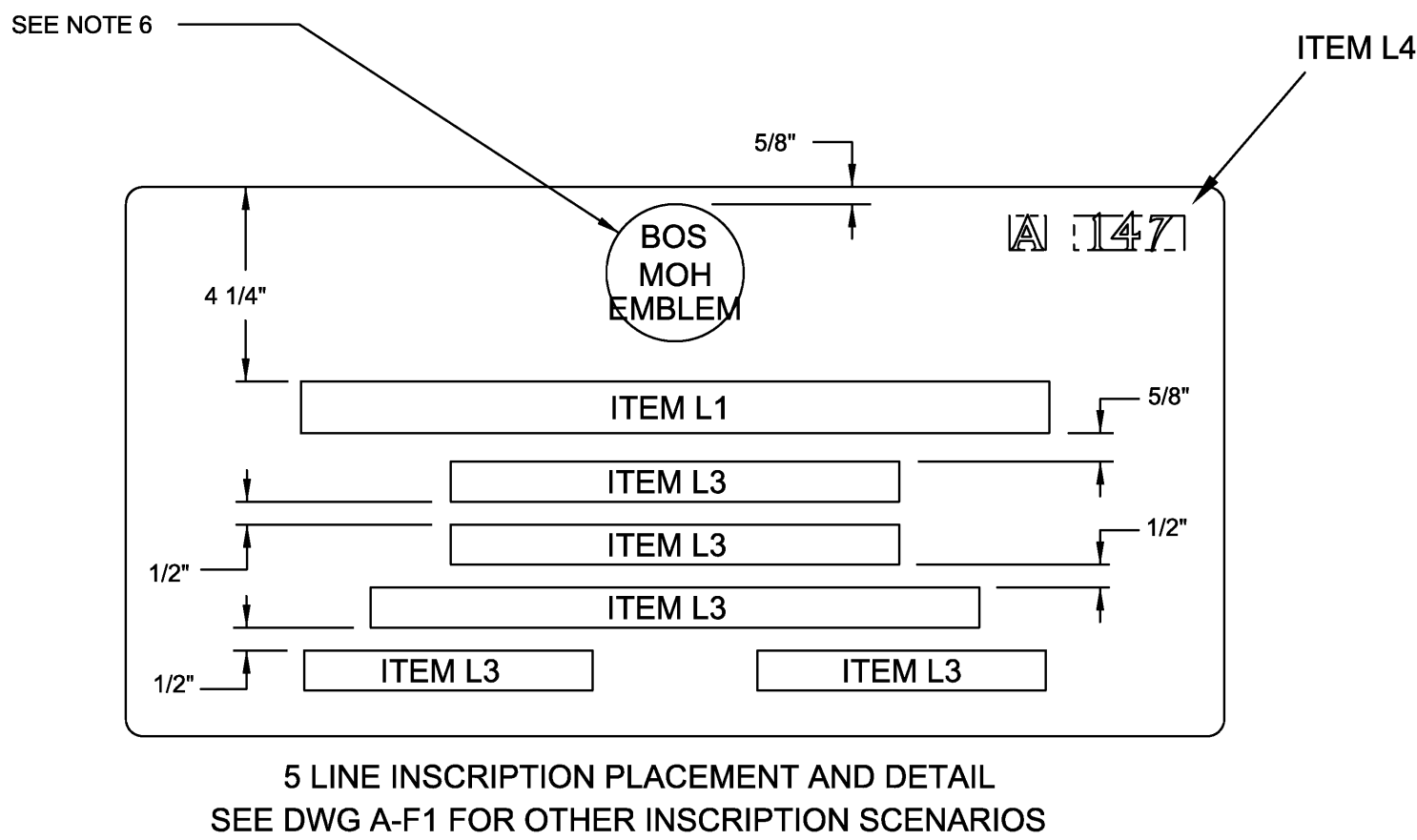


**TYPICAL FACE OF STONE**  
SCALE: 1/2"=1"



**STANDARD INSCRIPTION**  
SCALE: 1/4"=1"



**INSCRIPTION WITH SECTION & GRAVESITE NUMBER**  
SCALE: 1/4"=1"

**FOR UPRIGHT & FLAT MARBLE HEADSTONES/MARKERS**

COLOR OF STONE:	N8 OR HIGHER AS JUDGED AGAINST THE MUNSELL NEUTRAL VALUE SCALE	
INSCRIPTION DEPTHS:	MAXIMUM	MINIMUM
FOR L-1 LETTERS	7/32"	5/32"
FOR L-3 & L-4 LETTERS:	5/32"	4/32"

**GENERAL NOTES:**

- ITEM NUMBER IN INSCRIPTION BLOCK REFER TO INSCRIPTION SIZE AND EMBLEMS OF BELIEF SHOWN ON DRAWING A-LNC&E-1 AND A-LNC&E-2, AND A-LNC&E-3 DATED 6-5-03.
- EMBLEM OF BELIEF IS OPTIONAL.
- ALL MARBLE DIMENSIONAL TOLERANCES ARE ± 1/4" UNLESS OTHERWISE SPECIFIED.

- MARBLE SHALL BE SELECT, WHITE MARBLE CONFORMING TO ASTM C119 WITH A SOUNDNESS CLASSIFICATION OF GROUP A, AS DEFINED BY THE MARBLE INSTITUTE OF AMERICA WITH UNIFORM AND FAVORABLE WORKING QUALITIES CONTAINING NO GEOLOGICAL FLAWS OR VOIDS.
- THE TOP AND ALL SIDES SHALL BE FREE OF SCRATCHES, SAW MARKS, CHIPS OR CRACKS. FINISHED MARKERS SHALL BE PACKAGED ACCORDING TO CONTRACT SPECIFICATIONS.
- MEDAL OF HONOR EMBLEM TO BE LOCATED IN CENTER OF STONE WHEN EMBLEM OF BELIEF IS NOT REQUIRED.

**CONVERSION TABLE**

ENGLISH/ U.S. STANDARD	METRIC	ENGLISH/ U.S. STANDARD	METRIC
42"	106.68 cm	2"	5.08 cm
24"	60.96 cm	1 5/8"	4.13 cm
14 1/2"	36.83 cm	1"	2.54 cm
13"	33.02 cm	3/4"	1.90 cm
4"	10.16 cm	5/8"	1.59 cm
3"	7.62 cm	1/2"	1.27 cm
2 1/2"	6.35 cm	1/4"	.64 cm



NATIONAL  
CEMETERY  
ADMINISTRATION

Drawing Title  
**FLAT MARBLE MARKER  
MEDAL OF HONOR  
12" X 24" X 4"**

Approved: Director, Memorial Programs Service

Signed

Approved: Chief of Operations, Memorial Programs Service

Signed

Project Title  
**GOVERNMENT HEADSTONES  
AND MARKERS**

Marker Type

F6

Checked

Drawn  
**DURHAM  
& ASSOC.**

Location

Digital File A-F6.DWG 24" x 36" SHEET

Date  
**06-05-03**

Project/Contract No.

V786P 530

DRAWING NO.

**A-F6**

Sheet 1 of 1