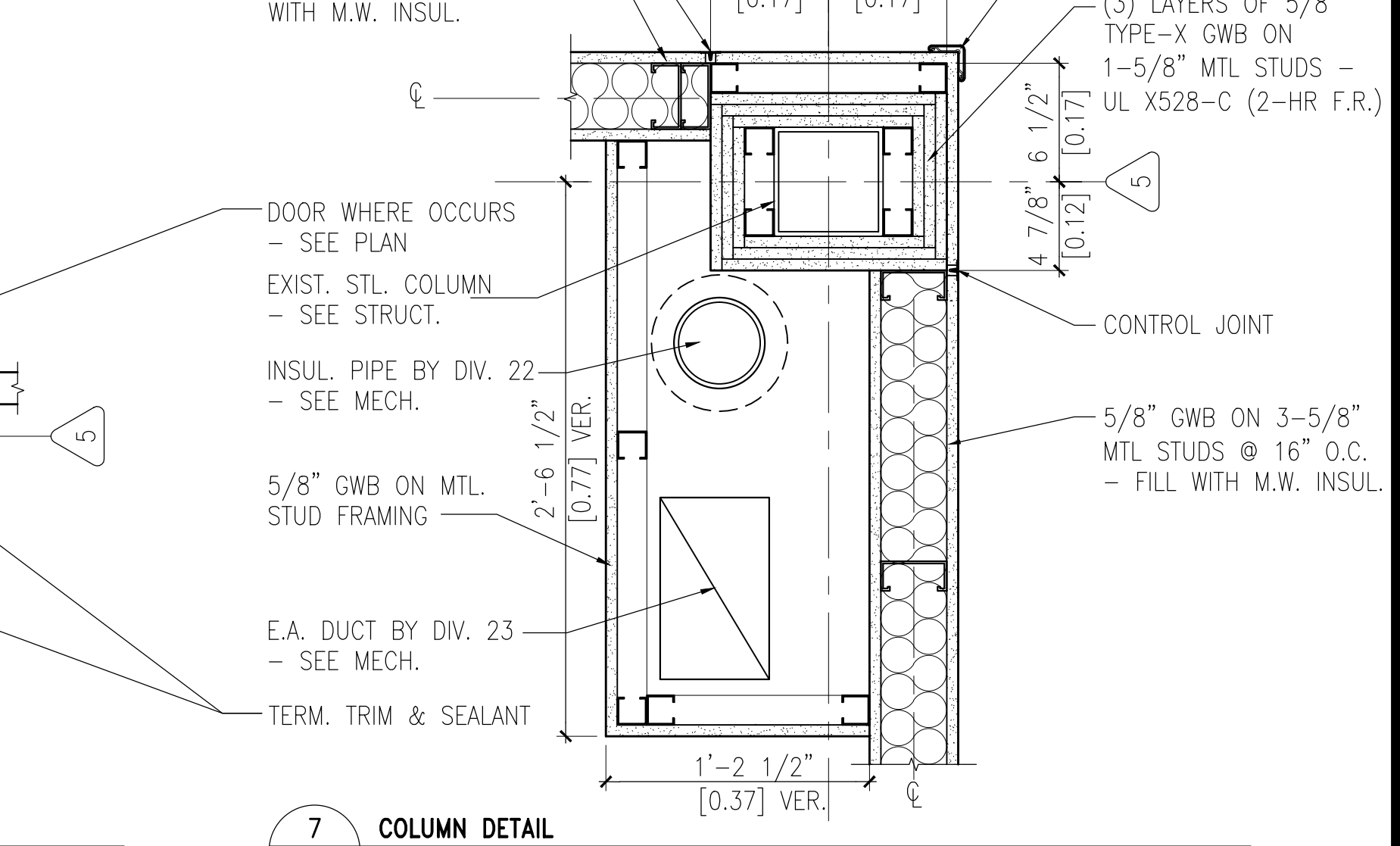
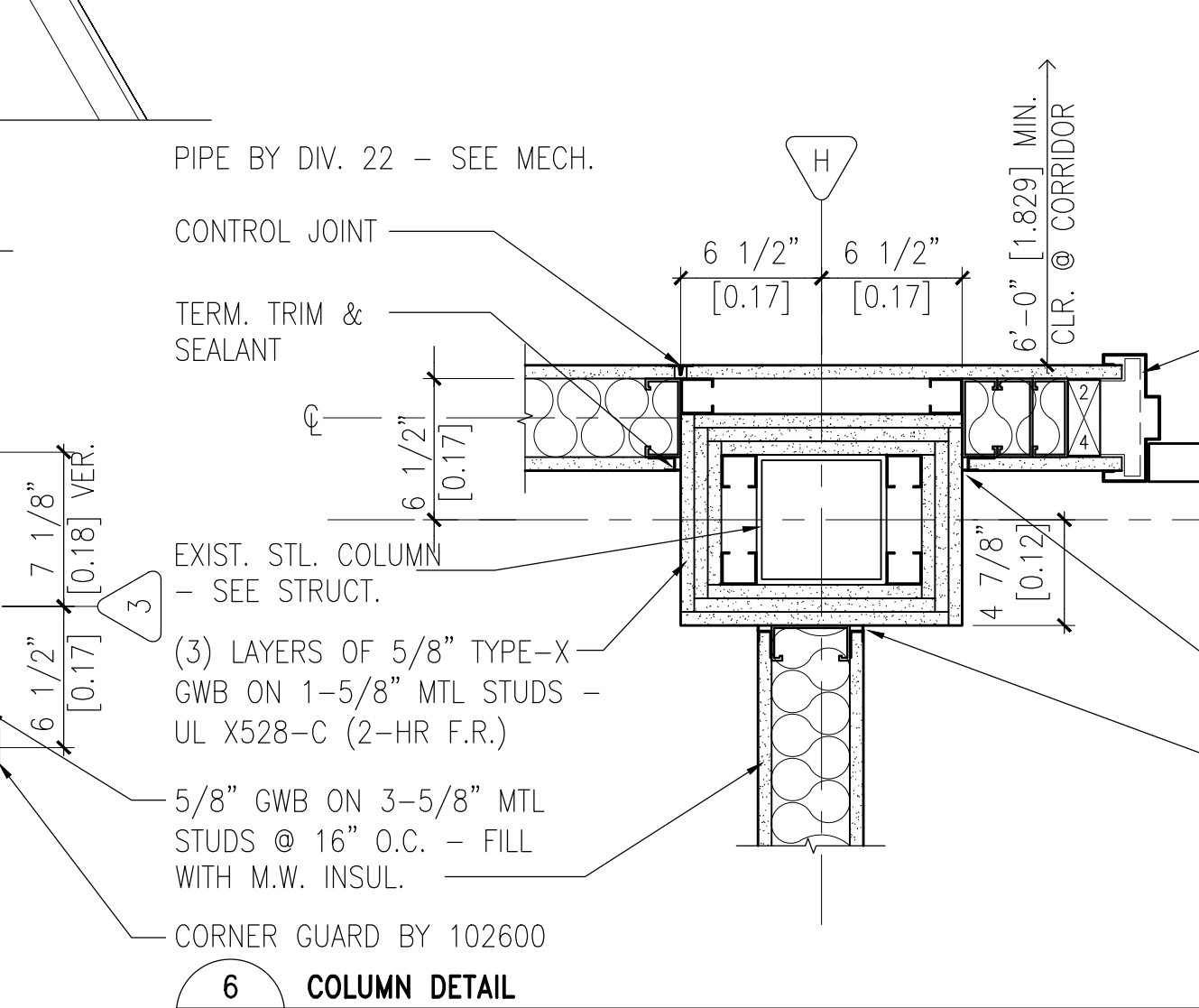
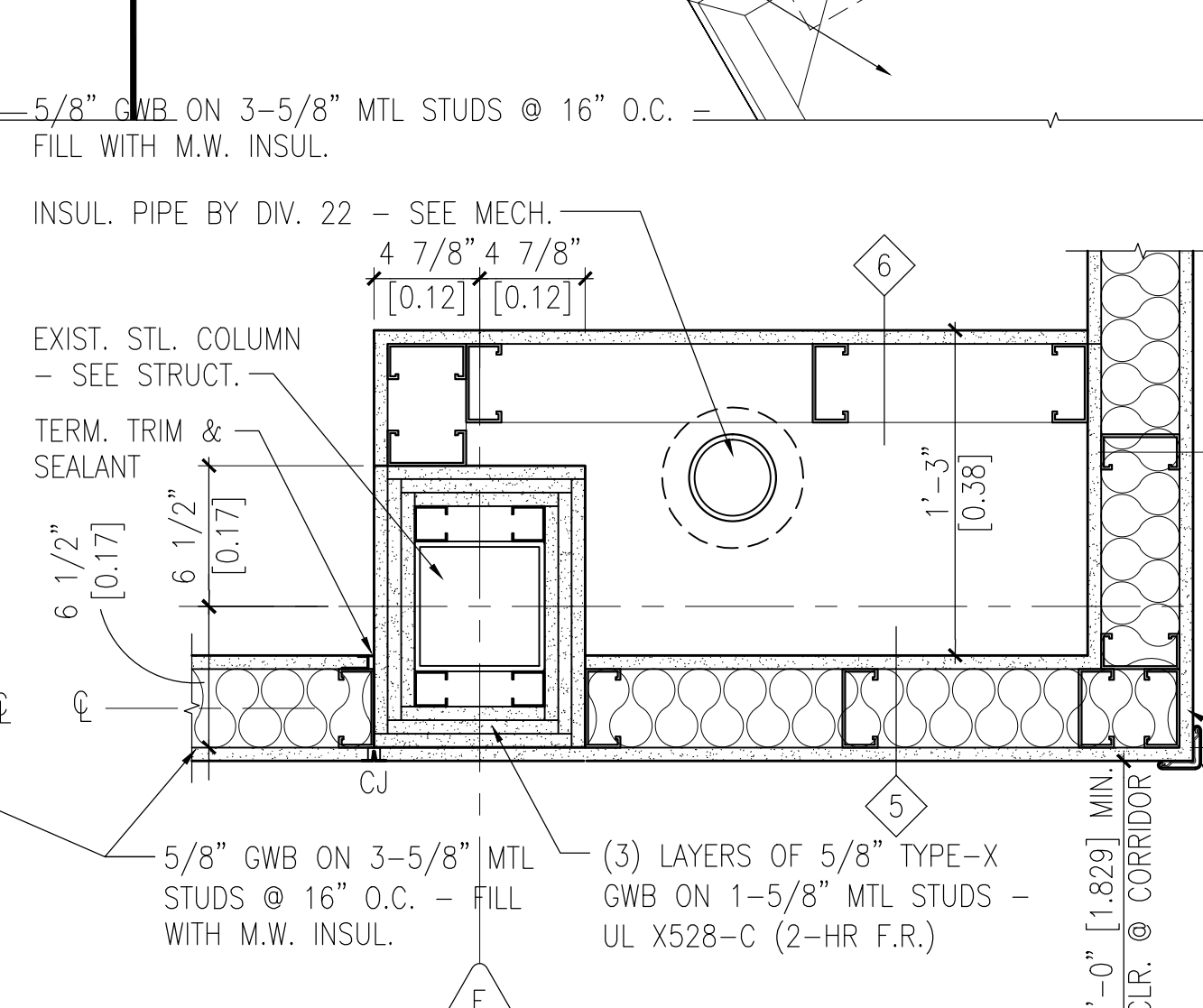
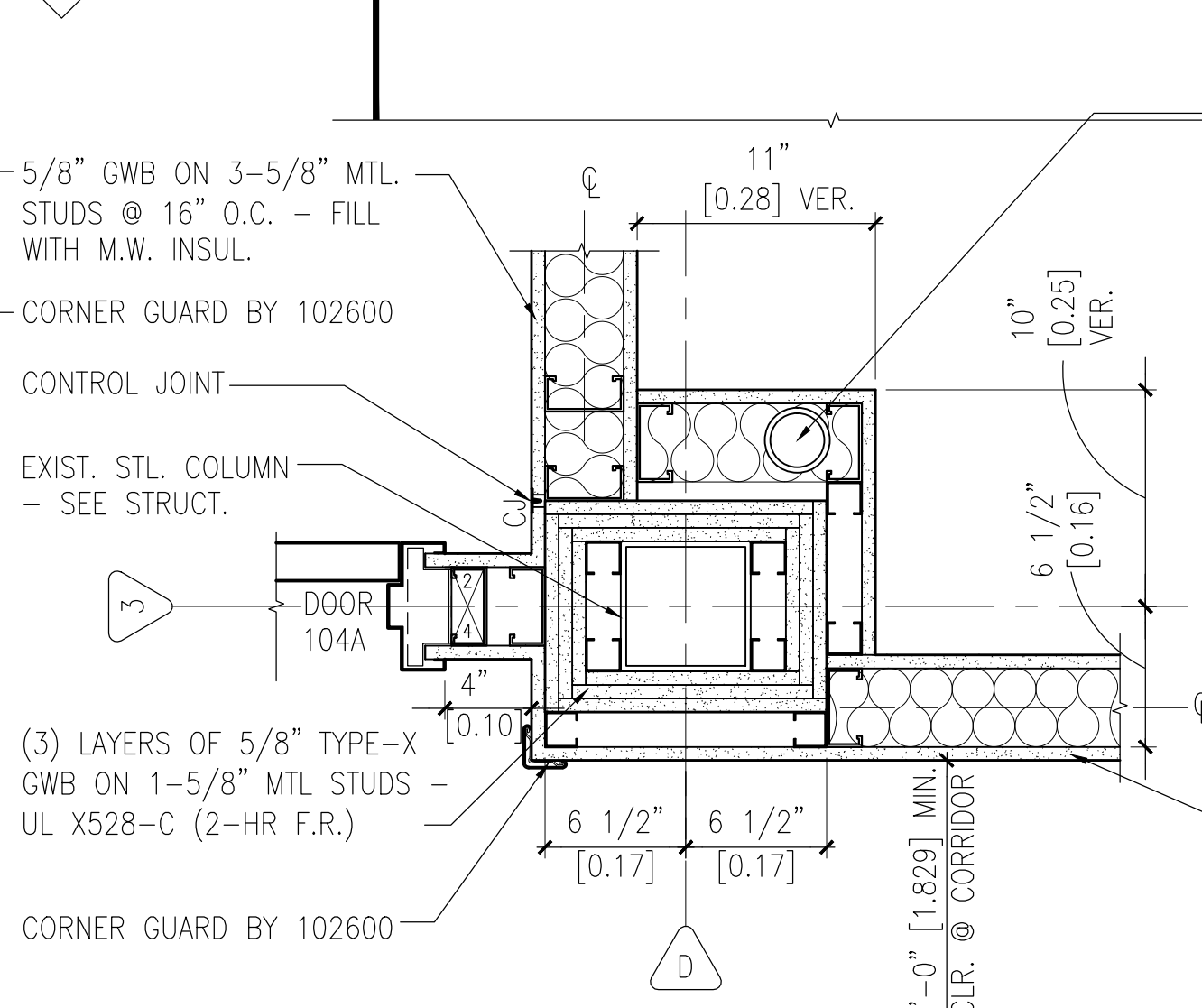
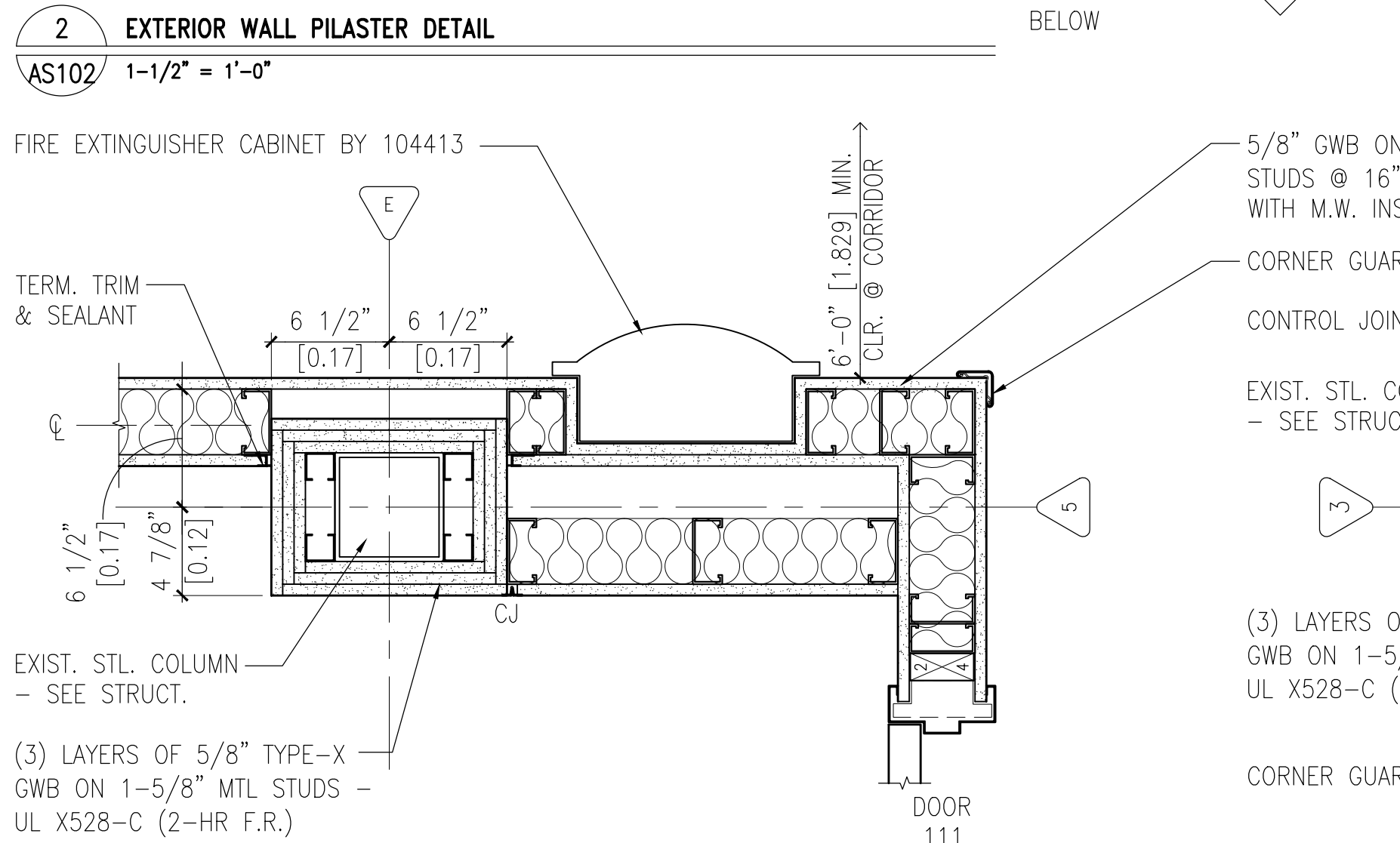
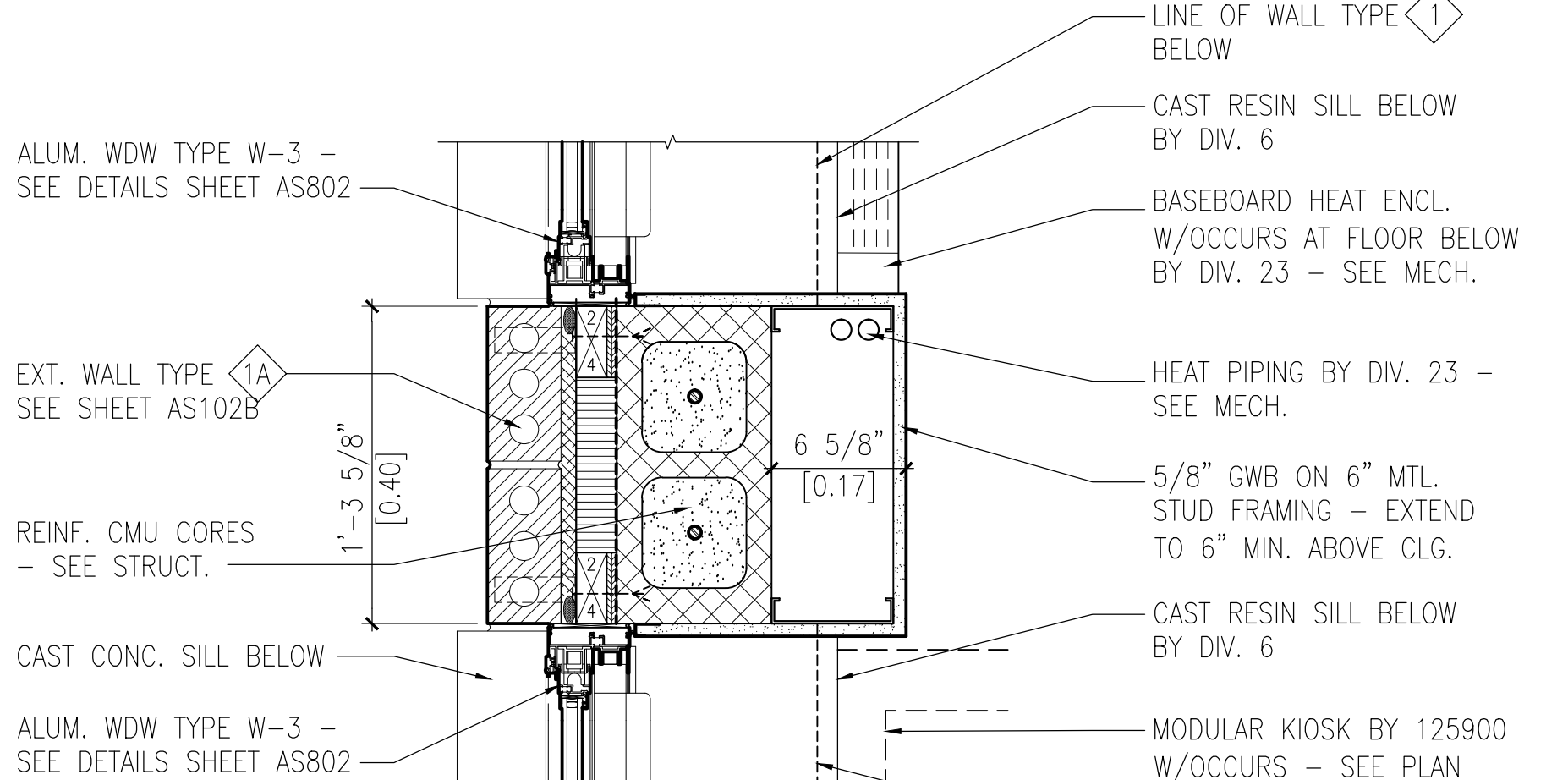


GENERAL PLAN NOTES

- SEE SHEET AS102B FOR CONSTRUCTION OF WALL TYPES
- SEE ROOM FINISH SCHEDULE SHEET AS901 AND RCP SHEET AS105B FOR ROOM FINISHES NOT INDICATED HERE.
- ALL STRUCTURAL COLUMNS THIS FLOOR SHALL BE INDIVIDUALLY 2-HOUR FIRE PROTECTED - S.D. 5/AS101
- SEE SHEETS AS102C FOR PLAN ALT. #15 AND AS102D FOR PLAN ALT. #17.
- WOOD LUMBER SHALL NOT BE USED ON THE INTERIOR OF THE BUILDING, INCLUDING AS STUDS, NAILERS, GROUNDS, OR BLOCKING. SHEET METAL IN APPROPRIATE SHAPES AND THICKNESSES ARE TO BE UTILIZED. SEE SPECIFICATIONS FOR PERMITTED USES OF WOOD IN FINISH PRODUCTS.
- ALL PARTITIONS SHALL EXTEND FROM FLOOR TO DECK/STRUCTURE ABOVE U.N.O.

FIRST FLOOR PLAN NOTES

- PROVIDE ROUGH-IN FOR FUTURE SINK BY DIV. 22. G.C. SHALL PROVIDE BLOCKING IN WALLS FOR FUTURE SOAPS AND PAPER TOWELS. UNDER ALT. #5 DELETE ALL SINK ROUGH-INS AND EQUIPMENT BLOCKING.
- 2-TIER SLOPE TOP LOCKERS BY 105100 - SEE 9/AS702. DELETE LOCKERS AND BASE UNDER ALT. #4.
- 4-TIER FLAT TOP LOCKERS BY 105100 - SEE 9/AS701. DELETE LOCKERS AND BASE UNDER ALT. #4.
- ADJUSTABLE MODULAR RECEPTION DESK BY 125900. SEE 2&3/AS701 FOR INTERIOR ELEVATIONS. DELETE RECEPTION DESK UNDER ALT. #8.
- MODULAR KIOSK BY 125900. SEE 1/AS701. DELETE KIOSK UNDER ALT. #8.
- NEW CHAIR RAIL BY 102600 - S.D. 2/AS702
- NEW 3" CORNER GUARD BY 102600. SEE 7/AS702 FOR TYPICAL INSTALLATION.
- NEW HANDRAIL AND WALL GUARD BELOW BY 102600. SEE 7/AS702 FOR TYPICAL INSTALLATION.
- PROVIDE 36" VERTICAL GRAB BAR BY 102800 (CC) SEE 8/A702.
- NEW OFFICE/COUNSEL ROOM. PROVIDE 2 HOOKS PER ROOM BY 102800. SEE 4/AS702 FOR TYP. ELEVATION
- CUBICLE CURTAIN (CC) AND TRACK (CC) BY 102123. PROVIDE TWO CURTAINS PER ROOM.
- NEW FIN TUBE SEE DIV 22/23 FOR RELATED WORK.
- COAT HOOK BY 102800
- PROVIDE NEW VERTICAL BLINDS (122400). DELETE UNDER ALT. #1.
- SEE 3/AS702 FOR TYPICAL ELEVATION. PROVIDE TWO HOOKS PER ROOM BY 102800.
- PROVIDE 4X8 SHEET TREATED PLYWOOD (061000) ON WALL FOR EQUIP. MOUNTING - PAINT - COORD. LOC. W/ ELEC.
- PROVIDE NEW MOP SINK BY DIV. 22. MOP RACK BY 102800. SEE ELEVATION 5/AS702 FOR FINISHES AT MOP SINK.
- FLOOR DRAIN BY DIV. 22 - SEE MECH.
- CONNECTOR BY DIV. 22/23
- CONC. FLOORING INFILL AT REMOVED STAIR OR DUCTWORK. SEE STRUCTURAL DRAWINGS.
- DELETE CASEWORK UNDER ALT. #4 (PARTIAL CASEWORK REMOVAL AT SOME AREAS). SEE SHEET AS102C
- ROOM TO BE COMBINED WITH ADJACENT SPACES UNDER ALT. #15 - SEE SHEET AS102C
- NURSE CALL PANEL AND CALL STATIONS BY ELECTRICAL. DELETE CALL STATIONS IN TOILET ROOMS 132 & 134 UNDER ALT. #18.
- F.R. ACCESS PANEL BY 083113 - COORD. LOCATION WITH M.C. - PAINT TO MATCH WALL TYP. BY DIV. 9
- PROVIDE FULL HT. M.R. GWB ALL WALLS THIS ROOM
- AREA OF REFUGE WITH EMERGENCY CALL STATION BY DIV. 27 - SEE ELEC.
- COPPER DOWNSPOUT AND SPLASH BLOCK BY DIV. 7 - PROVIDE PREFIN. MTL. DOWNSPOUTS UNDER ALT. #14.
- DELETE CASEWORK AND TACKBOARDS UNDER ALT. #12. SEE SHEET AS102C
- FILE PASS-THRU MILLWORK BY DIV. 6 - S.D. 3&9/AS701
- PATCH CONC. SLAB AS REQ'D WHERE MECH. HOUSEKEEPING PAD REMOVED.



FIRST FLOOR BUILDING STATISTICS

EXISTING FIRST FLOOR, TOPPED	2,582 SQ FT
EXISTING FIRST FLOOR, NEW CONC. TOPPING	7,963 SQ FT
EXISTING FIRST FLOOR PLATFORM	10,545 SQ FT
N.E. STAIR ADDITION	621 SQ FT
STAIR AND ELEVATOR ADDITION	506 SQ FT
TOTAL GROSS SQUARE FEET AT FIRST FLOOR	11,672 SQ FT

EXIST. BUILDING 28

1 FIRST FLOOR PLAN
AS102 1/8" = 1'-0"

SEE SHEETS AS108 & AS109 FOR EQUIPMENT PLANS
SEE SHEET AS102B FOR DIMENSIONS AND WALL TYPES

CONSTRUCTION DOCUMENTS SUBMISSION

STRUCTURAL HYPER ENGINEERING 1400 WEST STREET PARSONS, NORTH DAKOTA 58101 Phone: 701-228-5200 Fax: 701-228-5208 info@hyperarch.com		MECHANICAL, FIRE PROTECTION & ELECTRICAL OSBORN-MILLER-NELSON ENGINEERING, INC. 1001 LUTHER STREET NORTH, STE. 4 PARSONS, NORTH DAKOTA 58101 Phone: 701-228-5200 Fax: 701-228-5208 info@osbmn.com		CIVIL HANSEN THOMP FELLNER OLSON, INC. 701 N. MARKET PLACE SOUTH BORDO, NORTH DAKOTA 58101 Phone: 701-228-5200 Fax: 701-228-5208 info@hfo.com		INDUSTRIAL HYGIENIST LEGEND TECHNICAL SERVICES, INC. 1100 WESTERN AVENUE PARSONS, NORTH DAKOTA 58101 Phone: 701-228-5200 Fax: 701-228-5208 info@legendsvc.com	
LEED GREEN 1100 WESTERN AVENUE PARSONS, NORTH DAKOTA 58101 Phone: 701-228-5200 Fax: 701-228-5208 info@legendsvc.com		COMMISSIONING SOLUTIONS 2001 LUTHER STREET NORTH, STE. 4 PARSONS, NORTH DAKOTA 58101 Phone: 701-228-5200 Fax: 701-228-5208 info@comsol.com		INDUSTRIAL HYGIENIST LEGEND TECHNICAL SERVICES, INC. 1100 WESTERN AVENUE PARSONS, NORTH DAKOTA 58101 Phone: 701-228-5200 Fax: 701-228-5208 info@legendsvc.com		INDUSTRIAL HYGIENIST LEGEND TECHNICAL SERVICES, INC. 1100 WESTERN AVENUE PARSONS, NORTH DAKOTA 58101 Phone: 701-228-5200 Fax: 701-228-5208 info@legendsvc.com	

I HEREBY CERTIFY THAT THIS PLAN, SPECIFICATION OR REPORT WAS PREPARED BY ME OR UNDER MY DIRECT SUPERVISION AND THAT I AM A DULY REGISTERED ARCHITECT UNDER THE LAWS OF THE STATE OF MINNESOTA. Rochelle Conzemius DATE: 12/16/2014 REG. NO: 46294		APPROVED: SERVICE LINE DIRECTOR DATE: _____ APPROVED: GWS COORDINATOR DATE: _____ APPROVED: PROJECTS SECTION MANAGER DATE: _____ APPROVED: DIRECTOR FMS DATE: _____		APPROVED: INFECTION CONTROL NURSE DATE: _____ APPROVED: PATIENT SAFETY DATE: _____ APPROVED: CHIEF OF POLICE DATE: _____ APPROVED: SAFETY MANAGER DATE: _____		DRAWING TITLE: FIRST FLOOR PLAN PROJECT TITLE: EXPAND / CONSTRUCT OUTPATIENT MENTAL HEALTH CLINIC BUILDING No: 111 CHECKED BY: RDC DRAWN: MFB/SEL PROJECT NO: 656-241 1001 LUTHER STREET NORTH, STE. 4 PARSONS, NORTH DAKOTA 58101 DATE: 12/16/2014		SUBMISSION DATE: 12/16/14 PROJECT SCALE: 1" = 1'-0" SHEET NO: 111-AS102 OF 120	
--	--	--	--	--	--	---	--	---	--

12-15-14 02:46:16 PM