

3.02 Concrete slab on grade over 10 mil. vapor barrier over compacted aggregate base. See Structural Drawings.

3.13 6 1/2" thick 2 hour rated composite slab/metal deck UL# D916. See Structural Drawings.

3.29 Standard face precast concrete lintel at Door 106

3.34 Concrete footing. See Structural Drawings.

4.13 8" split face concrete masonry unit I.N.C. See Structural Drawings.

4.21 Horizontal masonry joint reinforcing @ 16" O.C. vertical.

4.27 Half joint weep vent @ 24" O.C. horizontal.

4.35 8" smooth face concrete masonry unit I.N.C. See Typical Sill Detail on sheet A313.

4.37 Groat solid behind CMU block.

4.38 Fill cores of all below grade CMU solid. See Structural Drawings.

5.01 Structural steel. See Structural Drawings.

5.02 Steel bar joint.

5.60 New personal fall arrest system roof anchor meeting all OSHA requirements for a 5000 pound load in any direction. Install per all manufacturer's directions.

5.61 Toggle bolts by anchor manufacturer. Attach to structural steel angles. Install per all manufacturer's directions.

5.62 New steel angles between roof joists. Location is adjustable depending on width requirement of toggle bolts and roof anchor location. See Structural Drawings.

6.48 3/4" Fire retardant treated plywood.

6.50 Remove core of fibrous wood deck to facilitate roof anchor installation. After installation fill with left over fibrous wood decking material. Glue back into position with an appropriate adhesive after installation. Fill void flush with bottom of existing deck.

7.05 EPDM Membrane flashing. Terminate under all-weather cap.

7.21 Rigid insulation with drainage channels.

7.09 Fully fireproof all joints and penetrations in and around the entire perimeter of the building. Elevate slab of the Mechanical Room.

7.24 Termination bar under counter flashing. Install per manufacturer's instructions.

7.36 Extend EPDM membrane up back of parapet, across blocking and turn down exterior face of blocking 2" min.

7.51 Prefinished aluminum coping. Color to be selected by C.O.R. or R.I.D.

7.92 2 1/2" min. closed cell, medium density spray polyurethane foam air barrier. R-14 min. Install per wall system manufacturers' instructions.

7.94 Fully adhered EPDM roof membrane on 2" min. base rigid insulation, an R-34 exterior grade plywood. Slope tapered insulation 1/4" per foot. See Roof Plan.

7.95 2 1/2" cementitious wood fiber deck planks attached to steel structure. See Structural Drawings.

7.96 Protection board.

9.04 Deep leg deflection track.

9.19 Where new roof joists penetrate walls, the wall will be filled appropriate the wall type, fill will be brought flush and level to the face of the new wall supporting the structural members. The fill will be held 1/4" inch away from surface of structural members. This remaining opening will be filled with flexible sealant appropriate to the finish scheduled for the wall type. The finish will be sanded smooth with the specified finish level and finished per the Contract Documents, typist.

9.41 Suspended acoustic ceiling tieleg. See Room Finish Schedule.

9.83 5/8" thick "X" shape reinforced gypsum board. See Wall Types. Extend to underside of roof deck. Finish to be selected by Resident Interior Designer.

12.51 Owner furniture & equipment - owner provided, owner installed.

26.01 Light fixture. See Electrical Drawings.

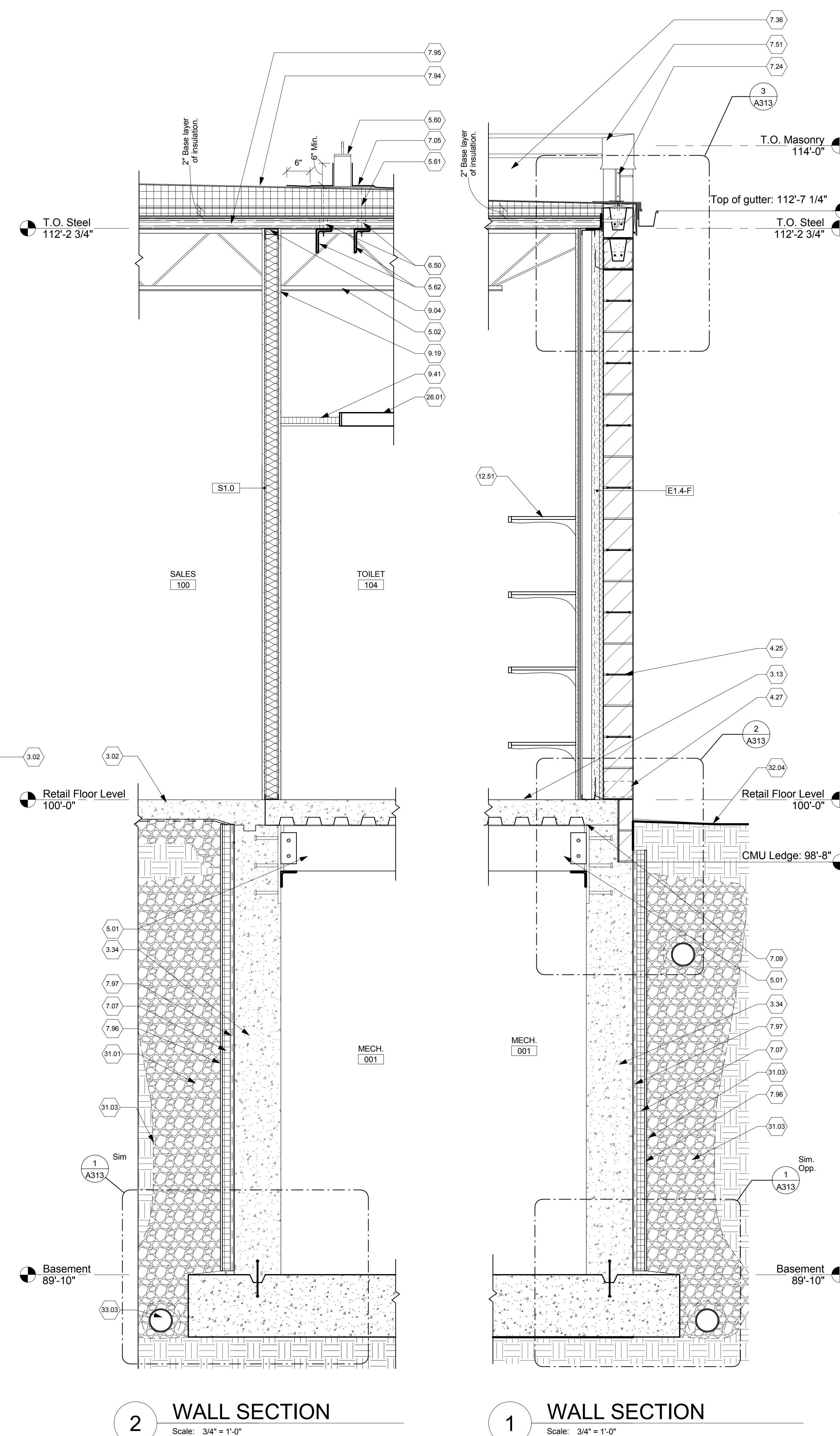
31.01 Clean gravel filter.

31.03 Filter fabric for drainage tile.

32.04 Finish grade. See Civil Drawings.

33.02 Foundation drain. Begin at northeast corner of building. Align depth with bottom of footer at this location. Slope 1/4 inch per foot down and across the building to low point as designated on Civil Drawings. See Civil Drawings for connection to basement pump, storm piping and spot elevations.

33.03 Basement foundation drain. Connect to basement pump pump. See Plumbing Drawings.



Scale: $3/4" = 1'-0"$

Scale: $3/4" = 1'-0"$

[illegible]

Project No.	VA Project No.	538-13-103
JPA Project No.	12007.00	
Building Number	VARIES	
Drawing Number	A311	

 Department of
Veterans Affairs