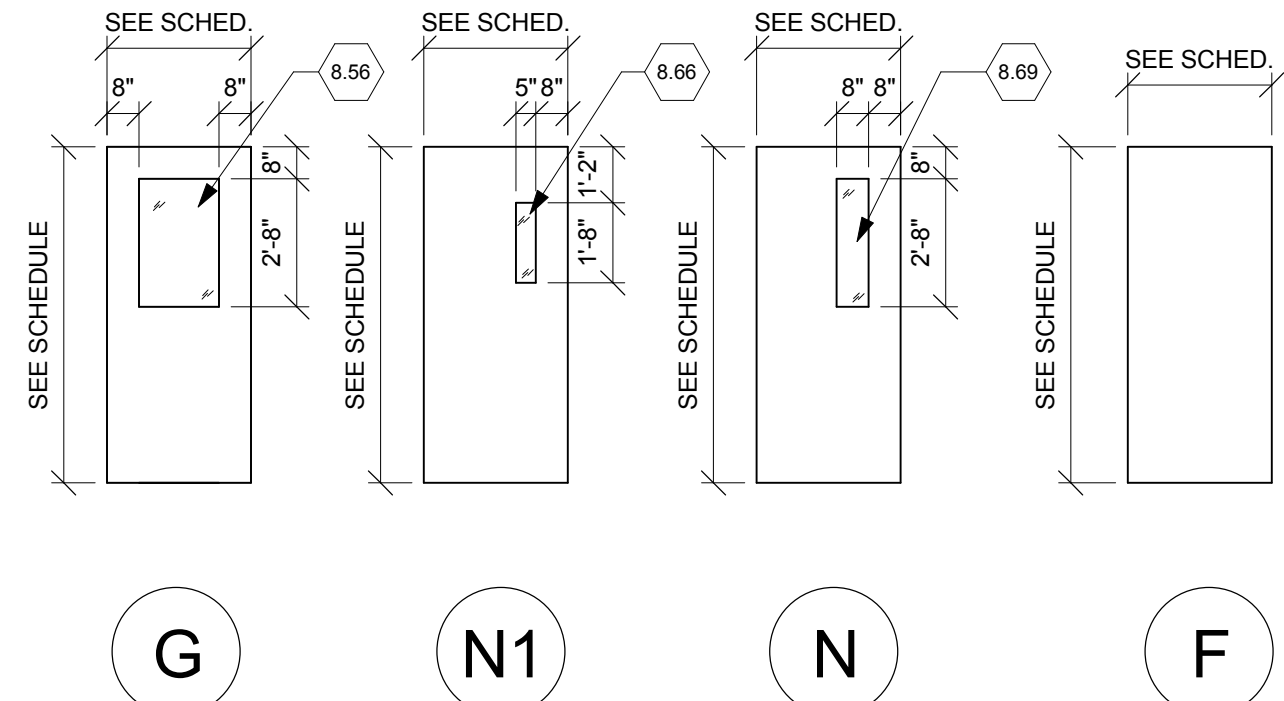


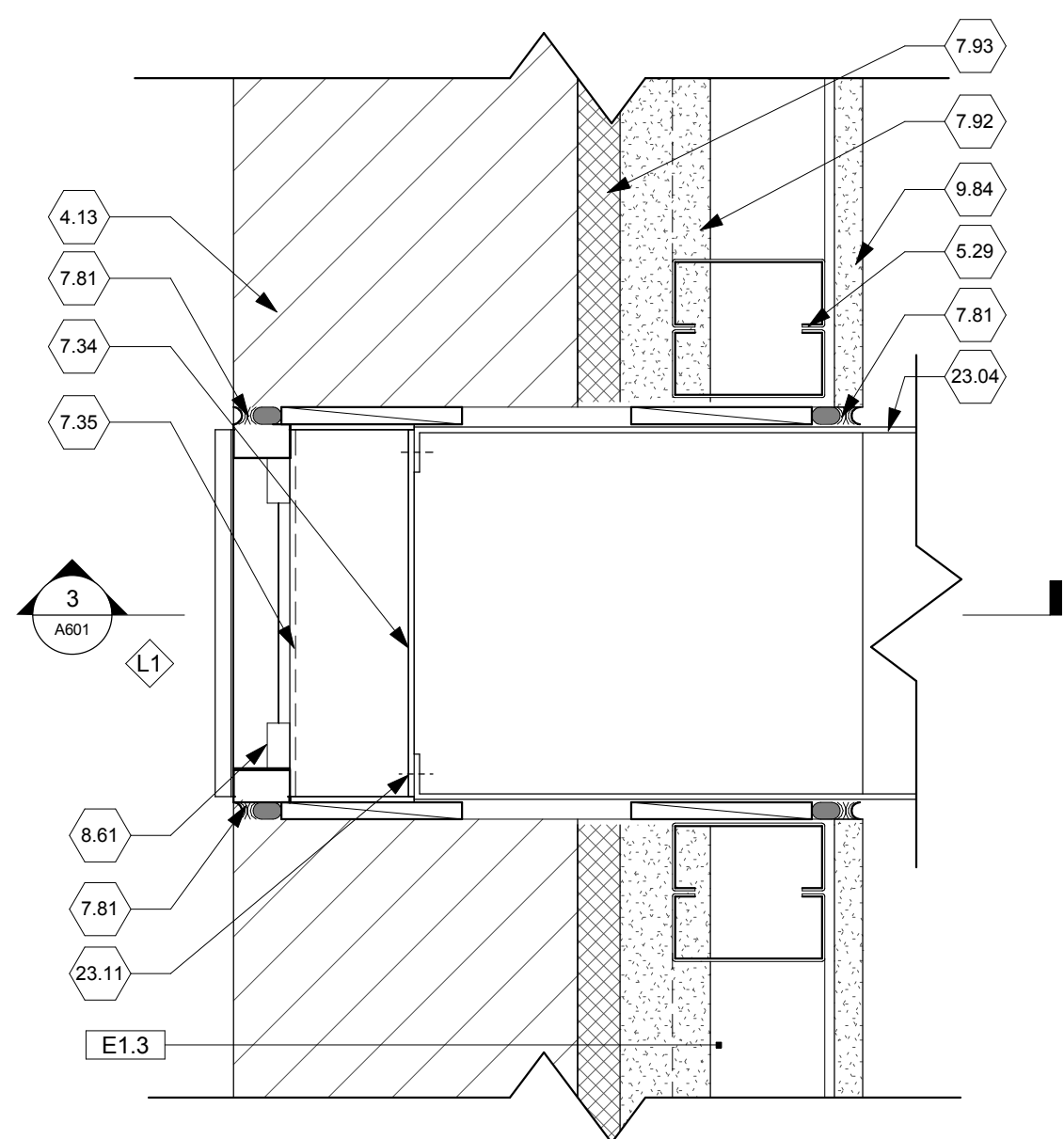
FRAME TYPES

Scale: 1/4" = 1'-0"



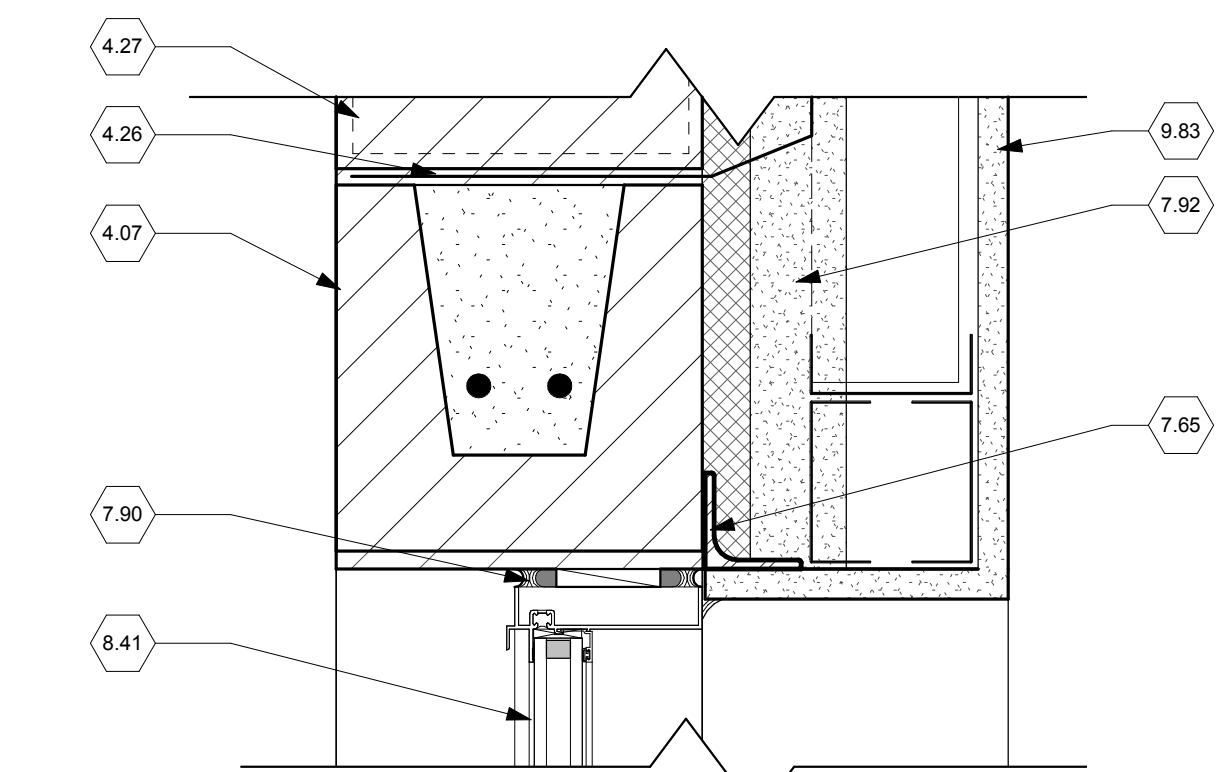
DOOR TYPES

Scale: 1/4" = 1'-0"



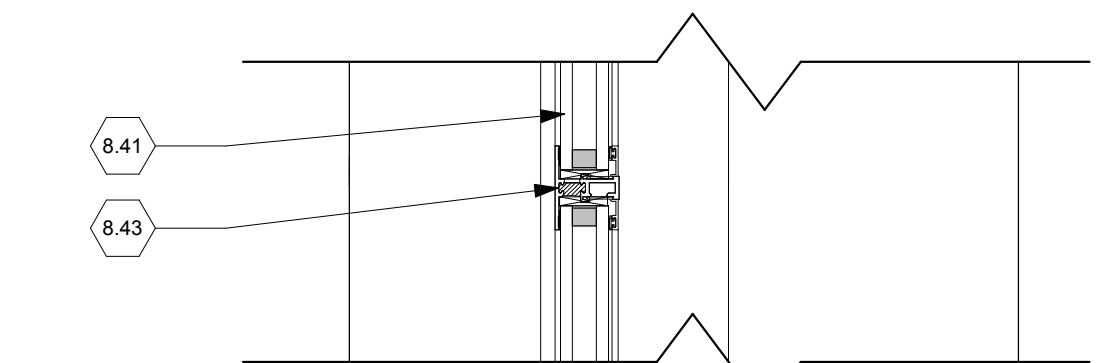
PLAN DETAIL @ LOUVER

Scale: 3" = 1'-0"



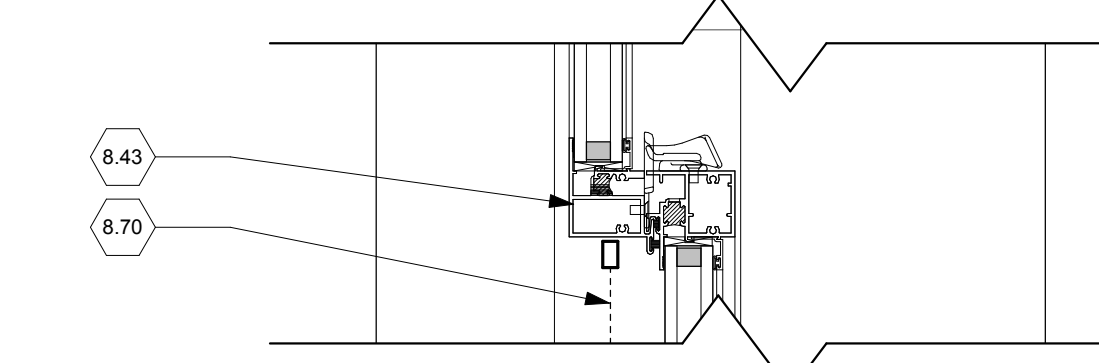
TYP. HEAD DETAIL

Scale: 3" = 1'-0"



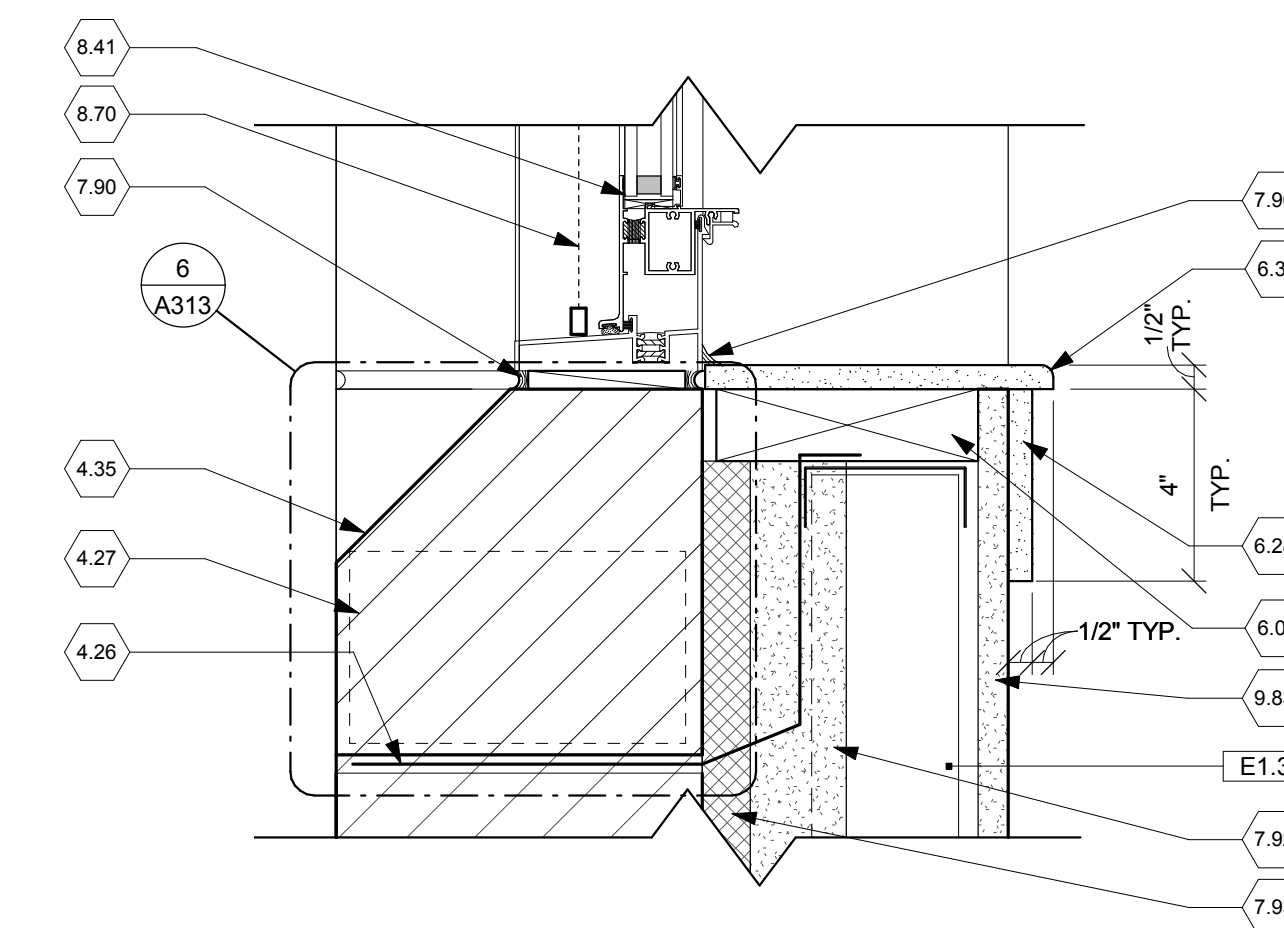
TYP. MUNTIN DETAIL

Scale: 3" = 1'-0"



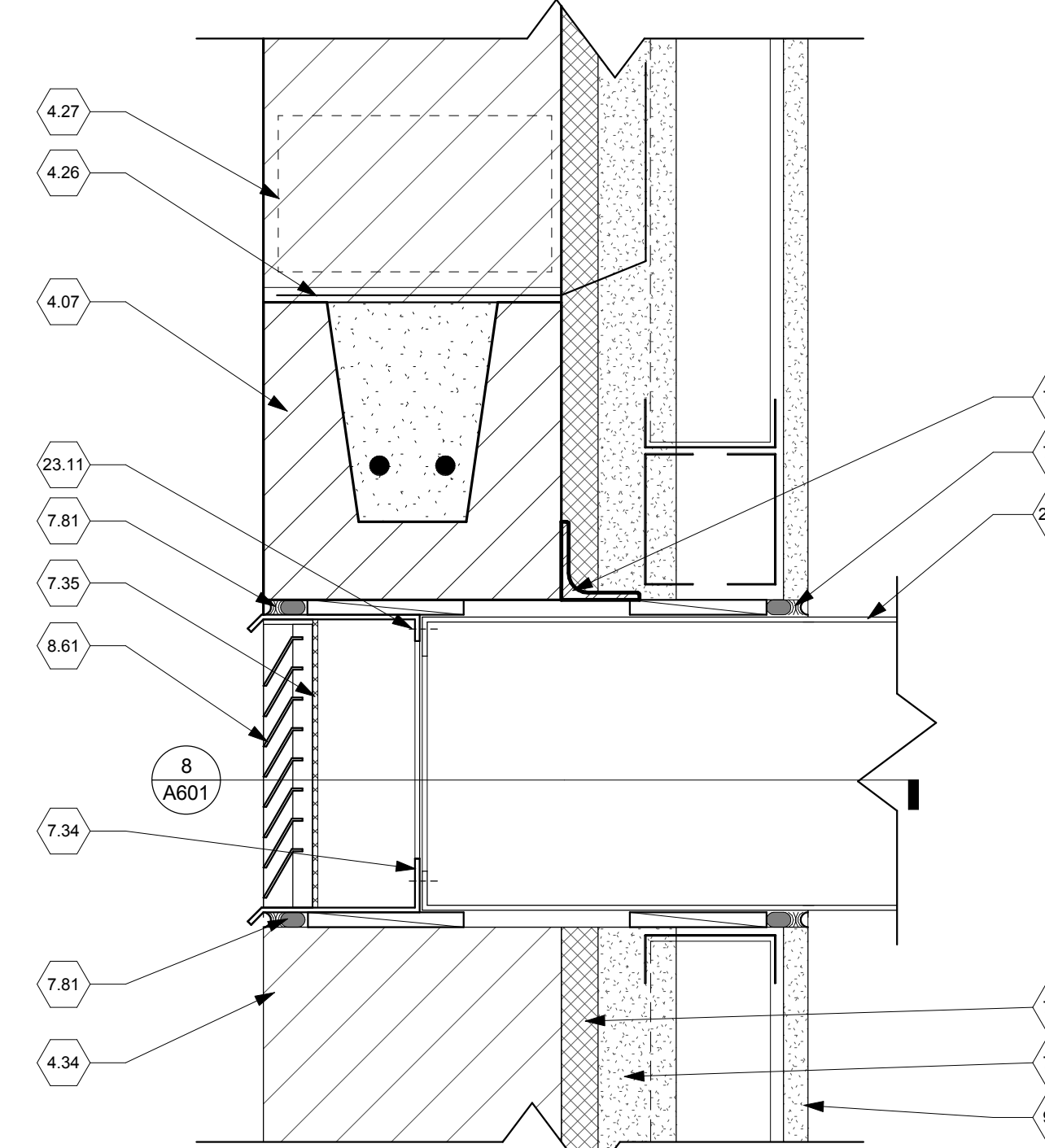
TYP. MEETING RAIL DETAIL

Scale: 3" = 1'-0"



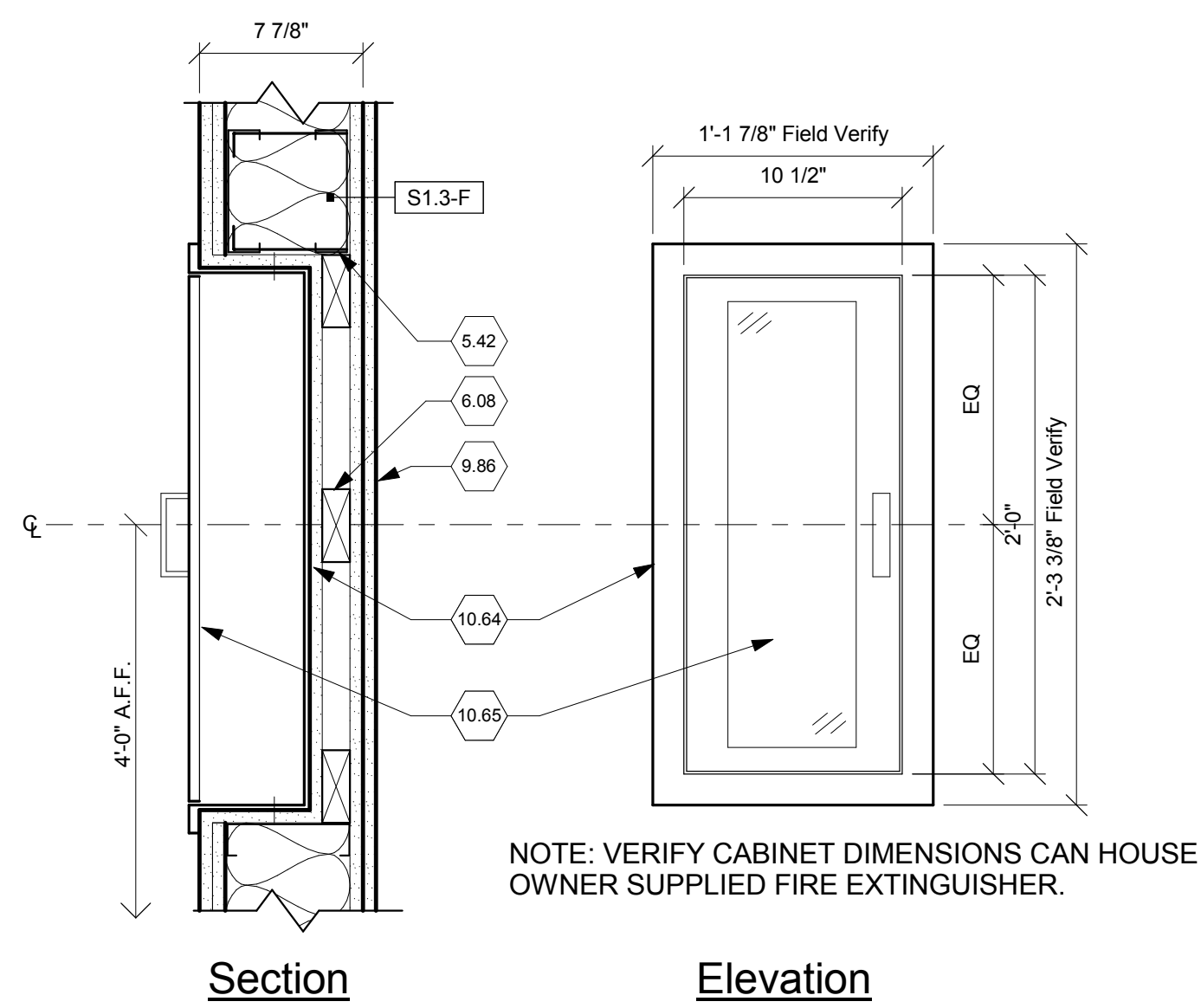
TYP. SILL DETAIL

Scale: 3" = 1'-0"



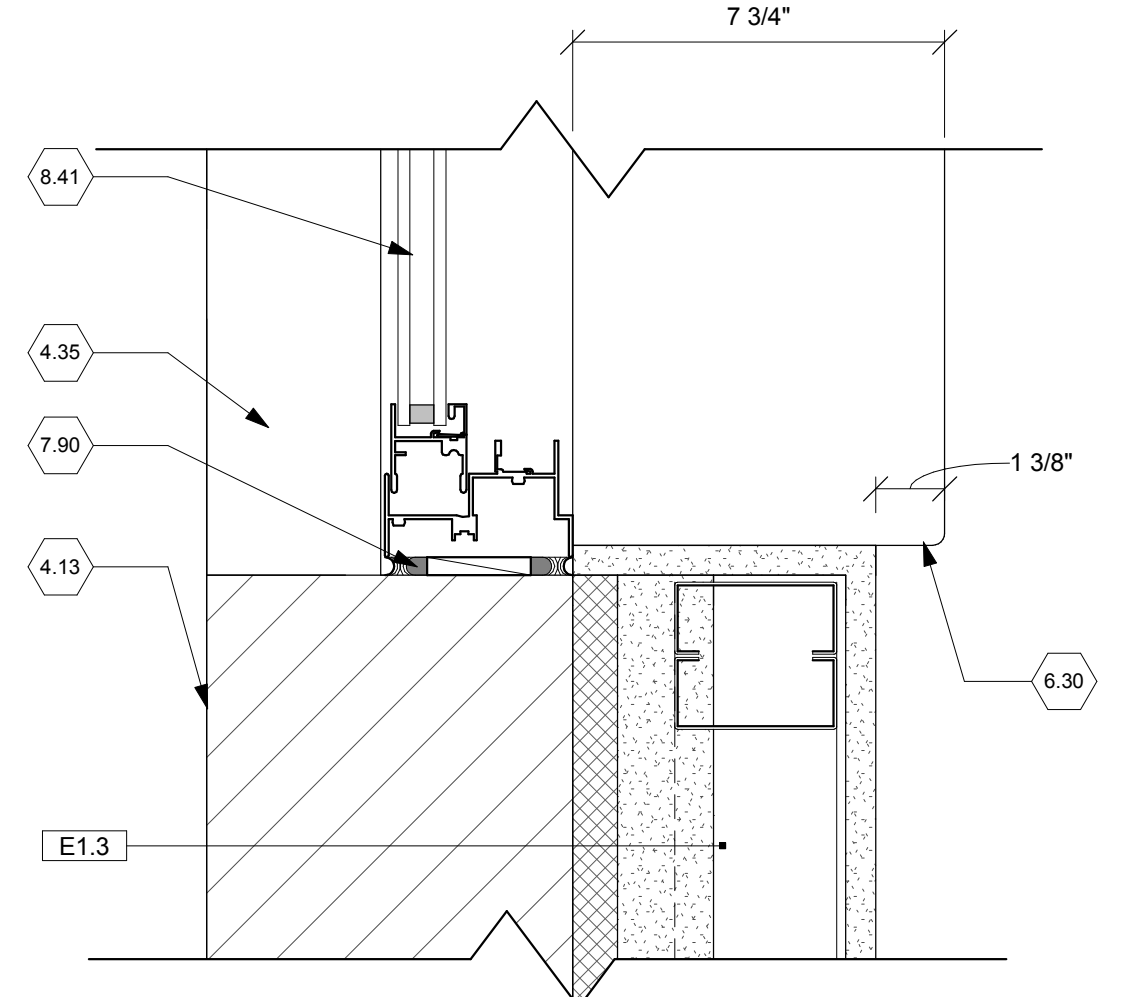
SECTION @ LOUVER

Scale: 3" = 1'-0"



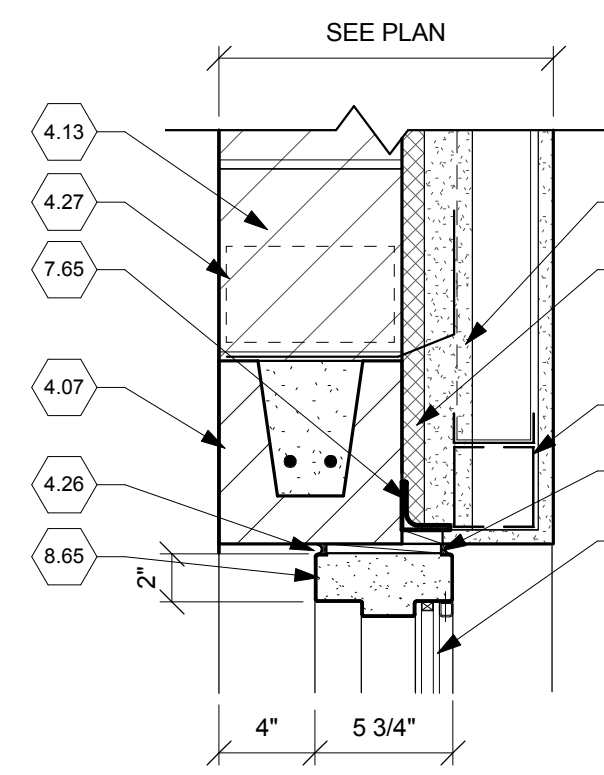
SECTION / DETAIL & ELEV. - FIRE EXTINGUISHER

Scale: 1 1/2" = 1'-0"

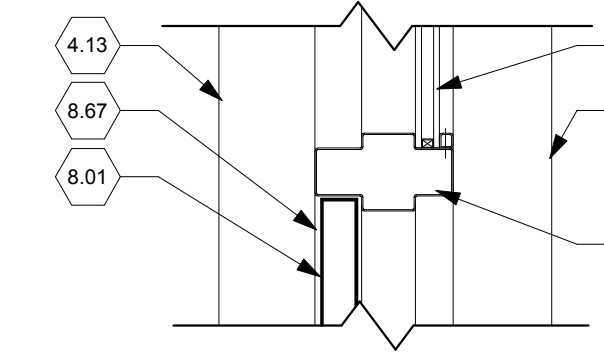


TYP. JAMB DETAIL

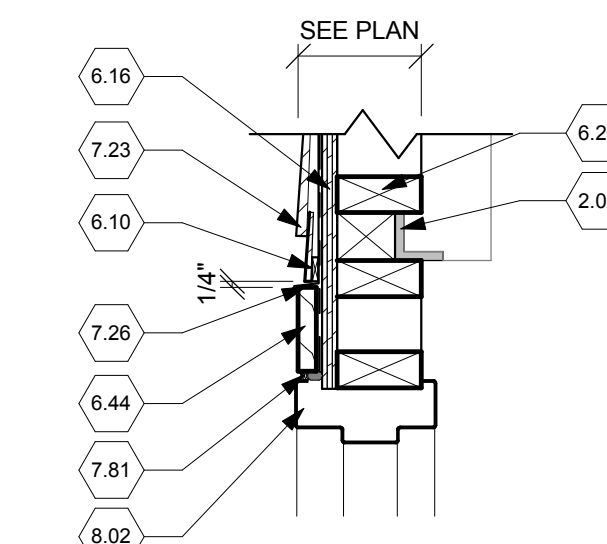
Scale: 3" = 1'-0"



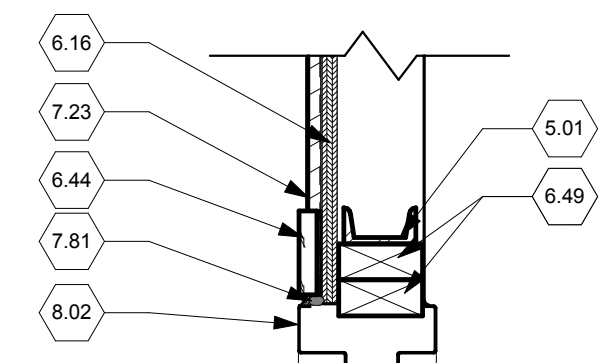
H4



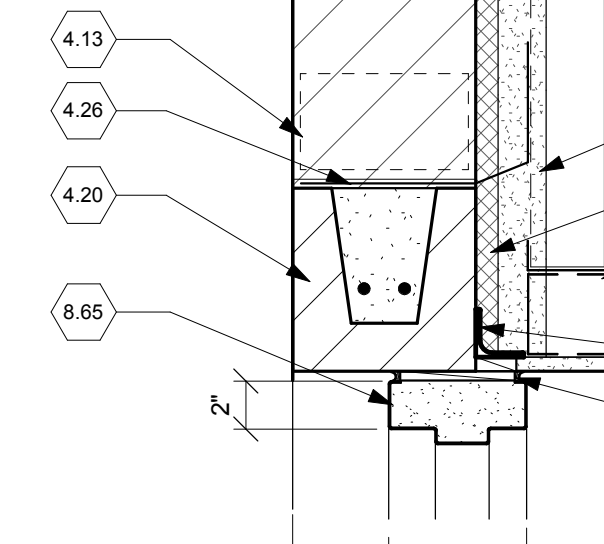
T1



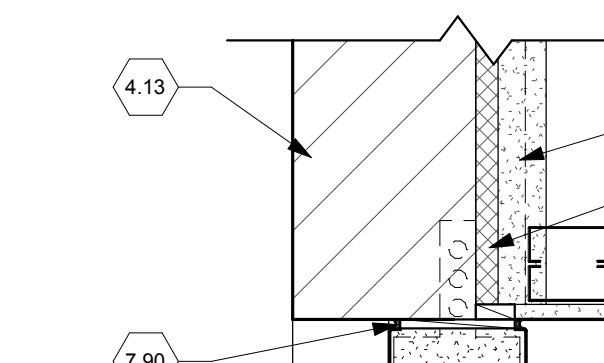
H3



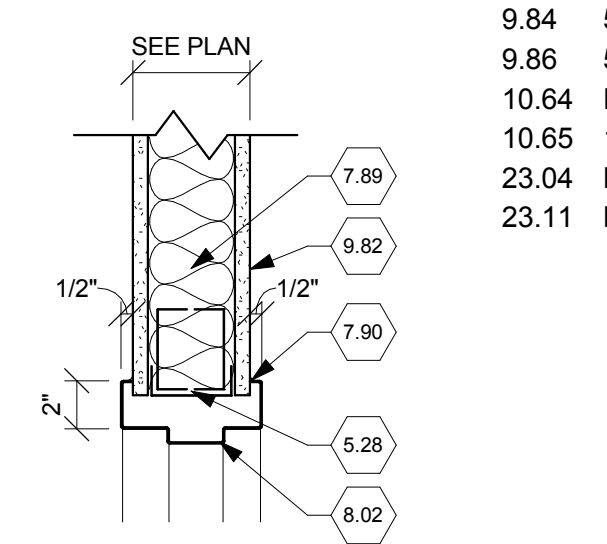
J3



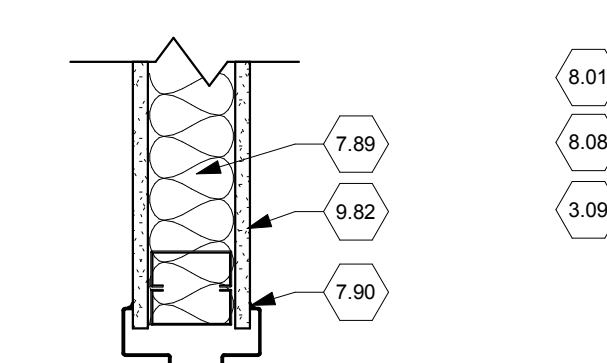
H2



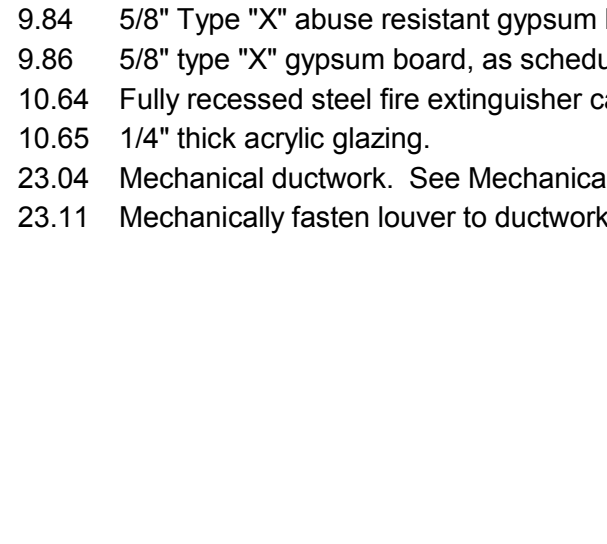
J2



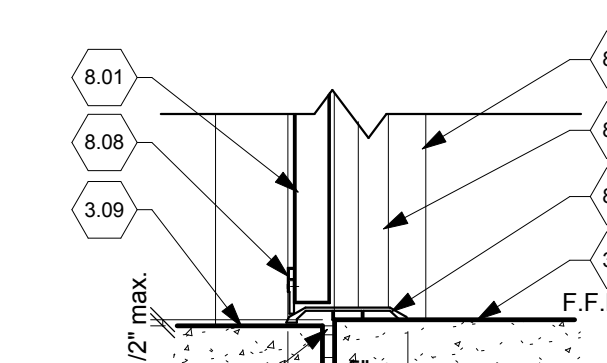
H1



J1



S1



DOOR SCHEDULE																
DOOR #	BETWEEN		DOOR DESCRIPTION						FRAME DESCRIPTION					FIRE RATING	HDWE SET	REMARKS
	RM	EXT	TYPE	MAT'L	SIZE				TYPE	MAT'L	HEAD	JAMB	Sill Detail			
					#	W	H	T								
100	100	RM	G	HM	1	3'-0"	7'-2"	1 3/4"	3	HM	H4	J2	S1		02	
103	106	103	F	HM	1	3'-0"	7'-0"	1 3/4"	1	HM	H1	J1		90 MIN	04	
104	100	104	F	HM	1	3'-0"	7'-0"	1 3/4"	1	HM	H1	J1			01	
105A	106	105	N	HM	1	3'-0"	7'-0"	1 3/4"	1	HM	H1	J1			03	
105B	105	EXT	F	HM	1	3'-0"	7'-2"	1 3/4"	3	HM	H4	J2	S1		02	
106	106	EXT	N1	HM	1	3'-0"	7'-2"	1 3/4"	2	HM	H2	J2	S1	90 MIN	02	
107	107	105	F	HM	1	4'-0"	7'-0"	1 3/4"	1	HM	H1	J1			06	
T52	1	EXT	G	HM	1	3'-0"	6'-10"	1 3/4"	2	HM	H3	J3	S1		05	

GENERAL NOTES - DOORS / WINDOWS

- A. All wood blocking shall be fire retardant, u.n.o.
- B. Seal joints between finish material and bottom of door frames.
- C. Paint window frames at door windows to match door frame.
- D. Double studs at all door openings.
- E. Refinish all existing doors scheduled for work to like new. Remove all existing hardware, unmount door, prep, prime and finish to match all existing conditions. Reinstall door and hardware, match all existing conditions.

DETAIL NOTES

- 2.02 Existing structure to remain.
- 3.09 Concrete landing. See Structural Drawings
- 3.10 New interior concrete slab. See Structural Drawings.
- 3.25 1/2" expansion materials.
- 4.07 Field fabricated Intel. See Structural Drawings
- 4.13 8" split face concrete masonry unit U.N.O. See Structural Drawings.
- 4.20 Use smooth face, field fabricated Intel. See Structural Drawings
- 4.26 Thru wall flashing.
- 4.27 Half joint weep/vent @ 24" O.C. horizontal.
- 4.34 3 courses of 8" smooth face single scored CMU.
- 4.35 8" smooth face CMU sill. See Typical Sill Detail on sheet A313.
- 5.01 Structural steel. See Structural Drawings.
- 5.28 Metal stud framing.
- 5.29 Double studs at jamb, typ.
- 5.42 Metal stud header.
- 6.08 Fire retardant treated 2x wood blocking.
- 6.10 Fiber cement lap siding starter strip, install per manufacturer's instructions.
- 6.16 5/8" exterior grade plywood. Paint interior. Resident Interior Designer to select color.
- 6.20 Pressure treated 2" x 4" wood stud framing @ 16" O.C.
- 6.28 Solid surface apron. Ease edge 1/4" radius.
- 6.30 Solid surface window sill.
- 6.44 Fiber cement 1 x 4 trim board.
- 6.49 Double studs at jamb, typ.
- 7.23 8 1/4" smooth fiber cement board lap siding with 7" exposure, over air and moisture barrier over 5/8" exterior grade plywood sheathing. Finish to be selected by Resident Interior Designer.
- 7.26 Flashing. Extend up wall 6" min.
- 7.34 Sill section with integral water stop.
- 7.35 Integral insect/bird screen.
- 7.65 2" x 2" jamb extension across head of window, door, and at all openings. Install per wall system manufacturer's instructions. Extend 8" either side.
- 7.81 Continuous sealant over backer rod.
- 7.89 Fiberglass batt insulation.
- 7.90 Sealant continuous around openings, both sides of frame. Provide backer rod at all exterior locations.
- 7.92 2 1/2" min. closed cell, medium density spray polyurethane foam air barrier, R-14 min. Install per wall system manufacturer's instructions.
- 7.93 Hygic Buffer Matt. Install per wall system manufacturer's instructions.
- 8.01 Hollow metal door.
- 8.02 Hollow metal frame.
- 8.04 Hospital stops @ all interior hollow metal frames.
- 8.08 Door sweep.
- 8.09 New aluminum door threshold set in mastic bed.
- 8.10 Face of wall beyond.
- 8.41 Thermally broken aluminum window with 1" insulated glazing. Refer to exterior elevations for window types.
- 8.43 Thermally broken aluminum window meeting rail.
- 8.56 1" tempered insulated glass unit.
- 8.57 1" heat strengthen insulated glass unit.
- 8.61 Prefinished aluminum louver with bird screen and site proof blades, install per all SMACNA (Chapter 7) recommendations. See detail 2/ A601 and Mechanical Drawings.
- 8.65 Hollow metal frame, fully grouted.
- 8.66 90 min. fire rated glazing. See Specifications.
- 8.67 Door jamb beyond.
- 8.69 1/4" tempered glazing. See Specifications.
- 8.70 Window manufacturer's screen.
- 9.82 5/8" Type "X" abuse resistant gypsum board. See Wall Types.
- 9.83 5/8" Type "X" abuse resistant gypsum board. See Wall Types. Extend to underside of roof deck. Finish to be selected by Resident Interior Designer.
- 9.84 5/8" Type "X" abuse resistant gypsum board.
- 9.86 5/8" type "X" gypsum board, as scheduled.
- 10.64 Fully recessed steel fire extinguisher cabinet with flat trim.
- 10.65 1/4" thick acrylic glazing.
- 23.04 Mechanical ductwork. See Mechanical Drawings
- 23.11 Mechanically fasten louver to ductwork per SMACNA requirements.

WINDOW TYPES

Scale: 1/2" = 1'-0"

LOUVER TYPE

Scale: 3" = 1'-0"



ARCHITECT/ENGINEERS:

JOHN POE ARCHITECTS

116 EAST THIRD STREET
DAYTON, OHIO 45402-
8320
937 461 3290 PHONE
937 461 0260 FAX
jpa@johnpoe.com

Drawing Title

DOOR SCHEDULE & LOUVER / WINDOW DETAILS

Approved: Project Director

Project Title

REPLACEMENT WORK
THERAPY GREENHOUSE

Location

Chillicothe, Ohio

Date

04/17/2015

Checked

WS

Drawn

VR

Project No.

VA Project No. 538-13-103
JPA Project No. 12007.00

Building Number

VARIES

Drawing Number

A601

Dwg. 19 of 48

Office of
Construction
and Facilities
Management

Department of
Veterans Affairs

Revisions	Date
Bid Documents	04/17/2015
100% Owner Review	12/22/2014
95% Owner Review	10/15/2014
Addendum #1	08/11/2015