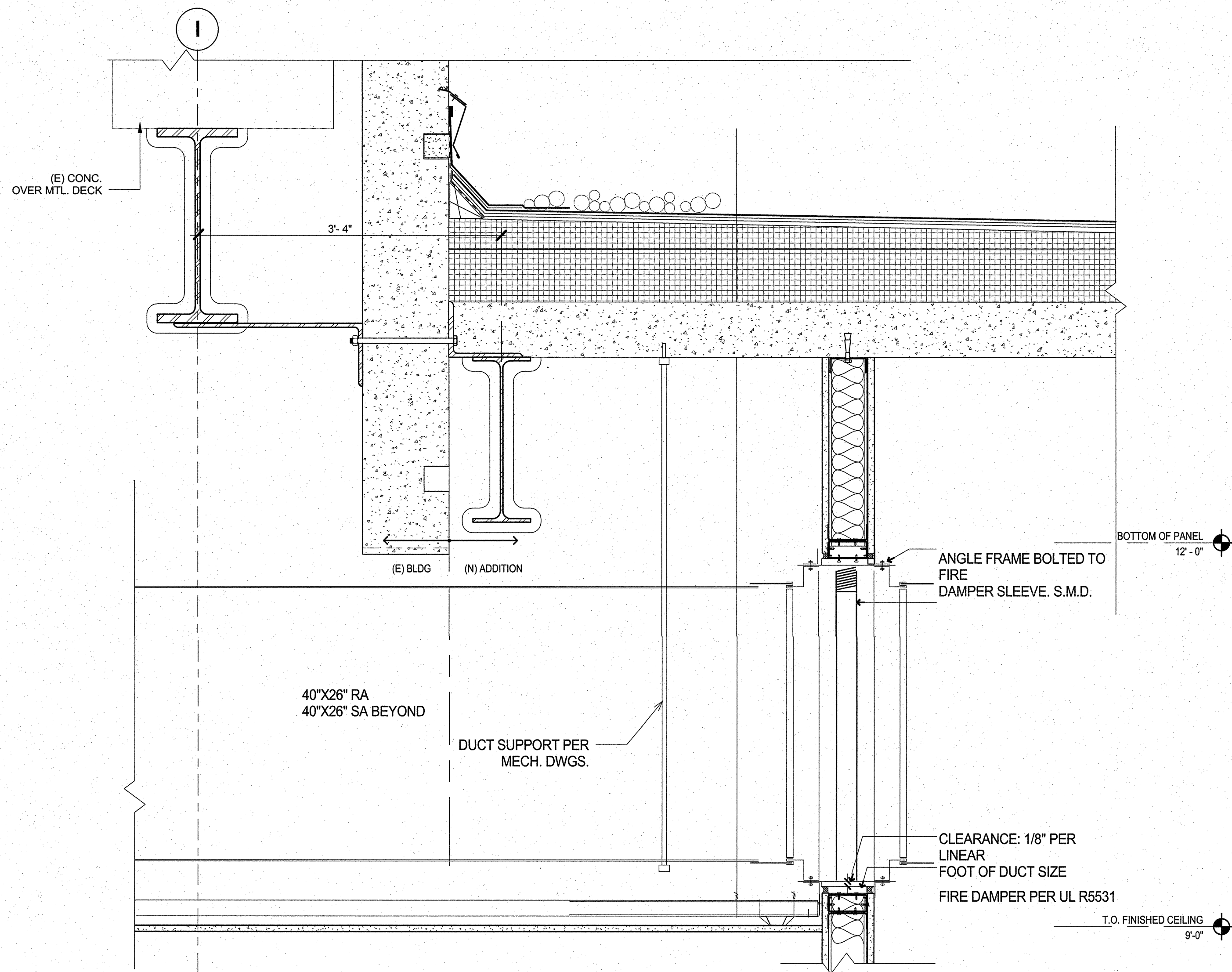
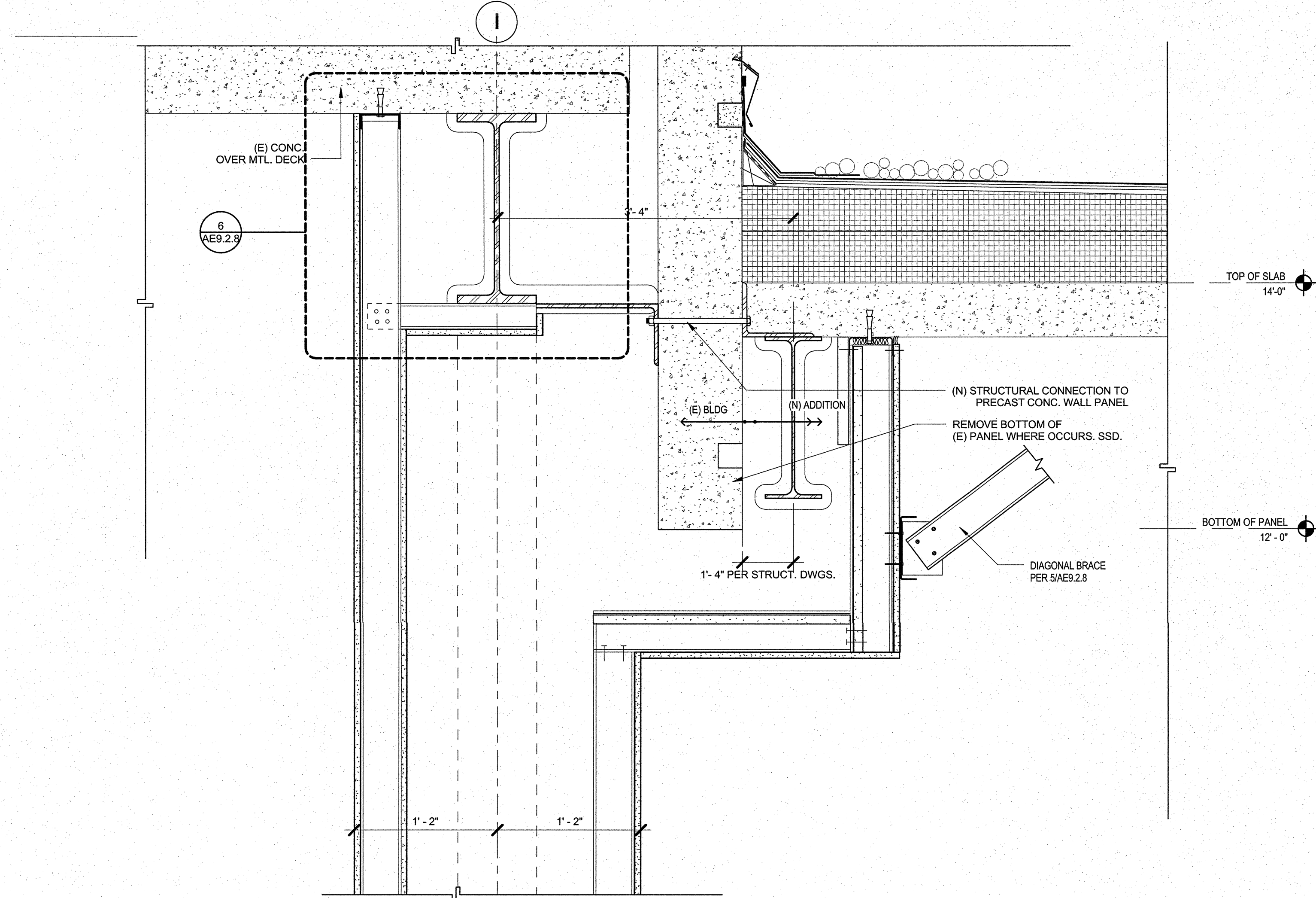


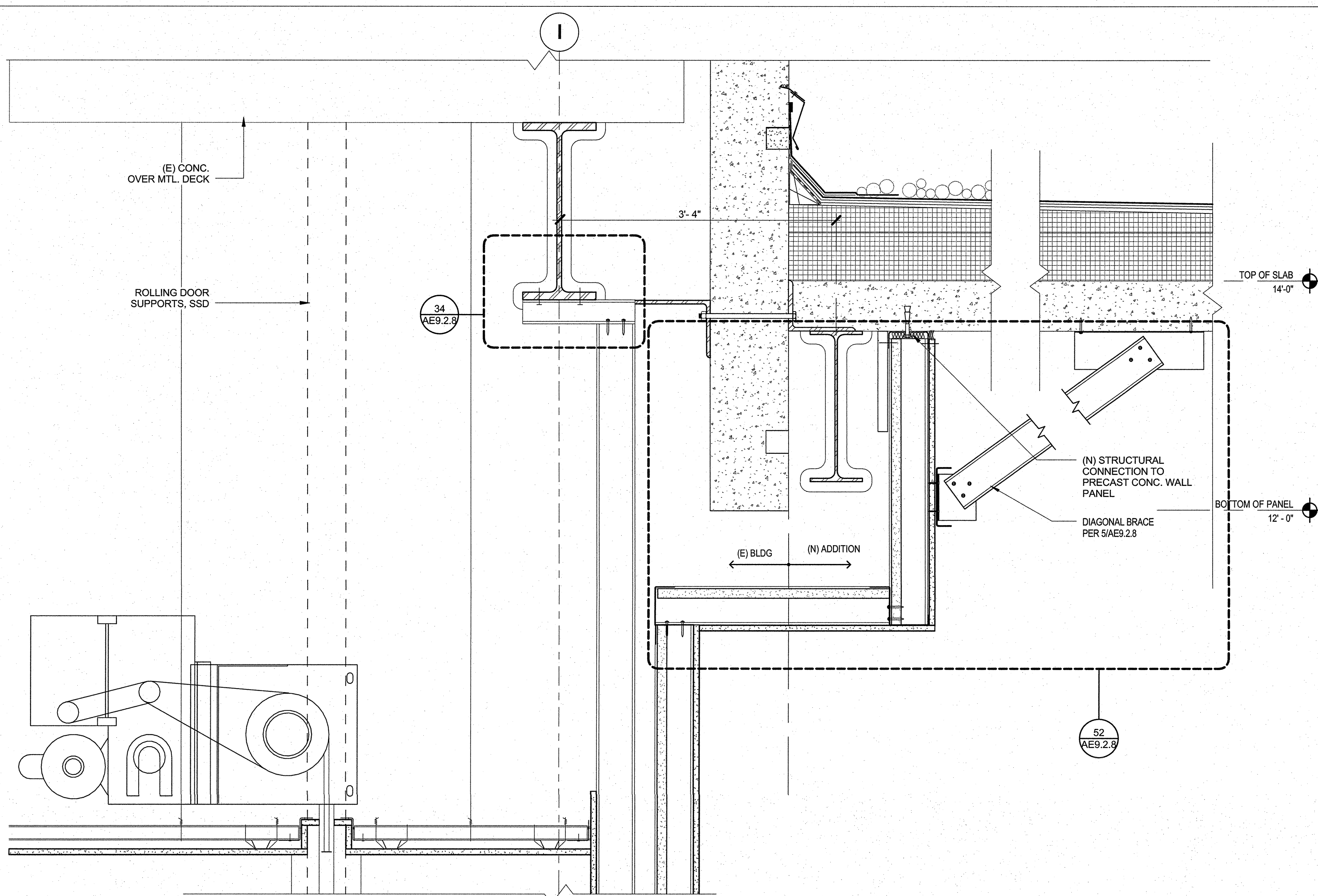
SHEET NOTES



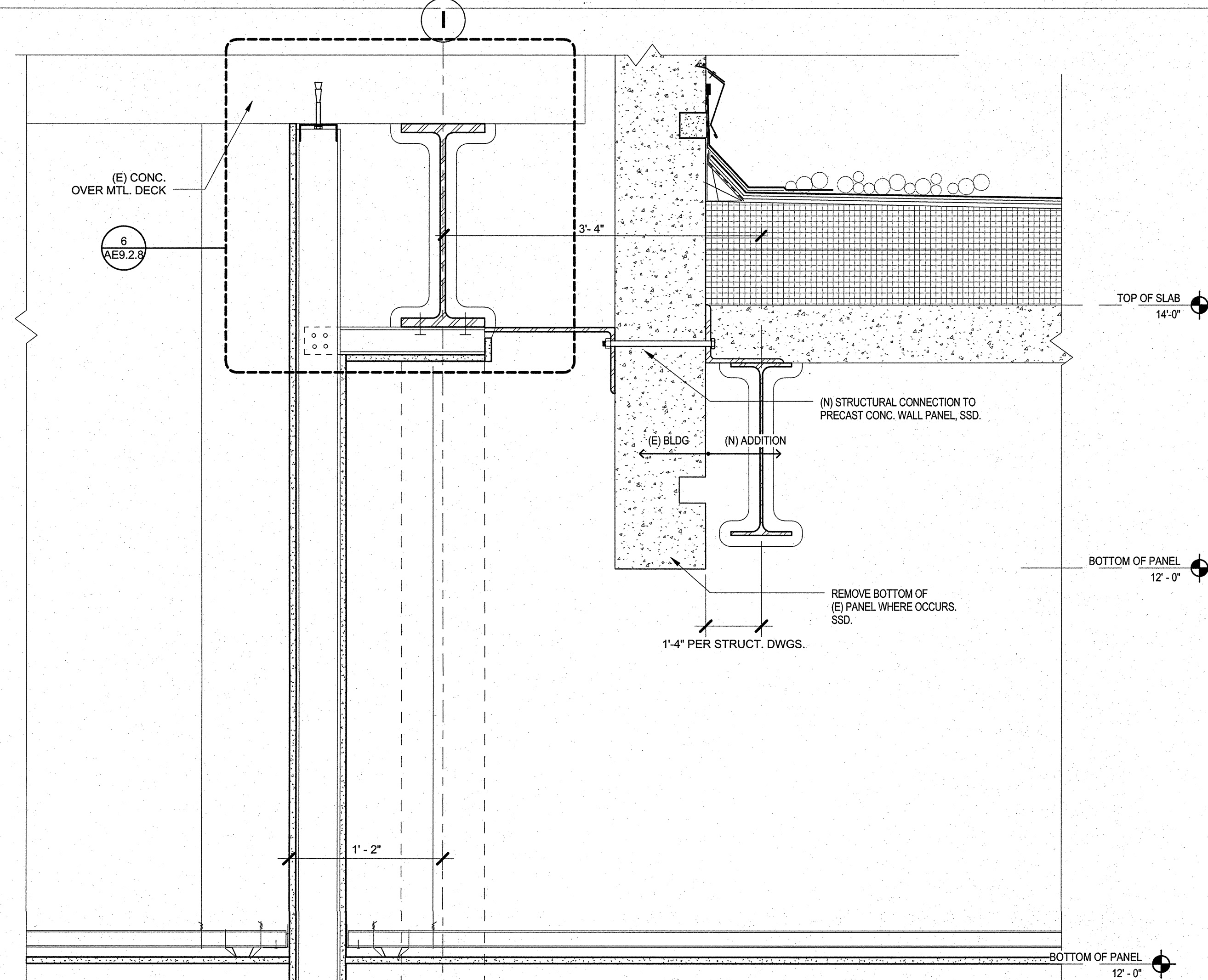
51 WALL SECTION @ GL I BETWEEN GL 3-4 DIAGNOSTICS AND RECEPTION
SCALE: 1 1/2" = 1'-0"



27 WALL SECTION @ GL I BETWEEN 1-2
SCALE: 1 1/2" = 1'-0"



54 WALL SECTION @ GL I BETWEEN 2-3 IN EXAM ROOM 2
SCALE: 1 1/2" = 1'-0"



30 WALL SECTION @ GL I BETWEEN 1-2 AT RATED DOOR
SCALE: 1 1/2" = 1'-0"

FULLY SPRINKLERED
CONSTRUCTION DOCUMENTS

CONSULTANTS:

Seals and Signatures

ARCHITECT/ENGINEERS:

THE DESIGN PARTNERSHIP ■
1629 Telegraph Avenue, Suite 500 | Oakland, CA 94612
Phone: 415-777-3737 | Fax: 415-777-3476
www.dpsf.com

Associate Architect:
CANNONDESIGN
595 Market Street, 12th Floor | San Francisco, CA 94105
T 415.243.4170 | F 415.243.4176
www.cannondesign.com

Drawing Title
PARTITION SECTIONS

Approved: Project Director

Project Title
VA PALO ALTO HEALTH CARE SYSTEM
EXPAND EMERGENCY DEPT. FACILITIES

Location
3801 Miranda Ave., Palo Alto CA

Date
APRIL 20, 2015

Checked

Drawn

NCH

Project Number
640-396Building Number
100Drawing Number
AE9.2.7

Office of
Construction
and Facilities
Management

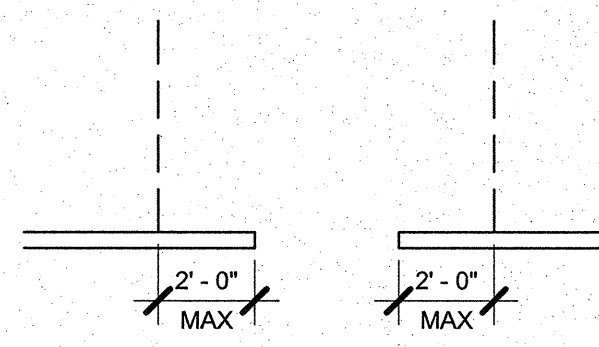
Department of
Veterans Affairs

SHEET NOTES

THE DESIGN OF SEISMIC BRACING AND ANCHORAGE OF NON-STRUCTURAL COMPONENTS, INCLUDING BUT NOT LIMITED TO PARTITIONS, IS TO BE PROVIDED BY THE CONTRACTOR PER SPECIFICATION SECTION 13.06.41. ANCHORAGE AND BRACING SHOWN REPRESENTS DESIGN EXPECTATION. FINAL DESIGN TO BE BY CONTRACTOR.

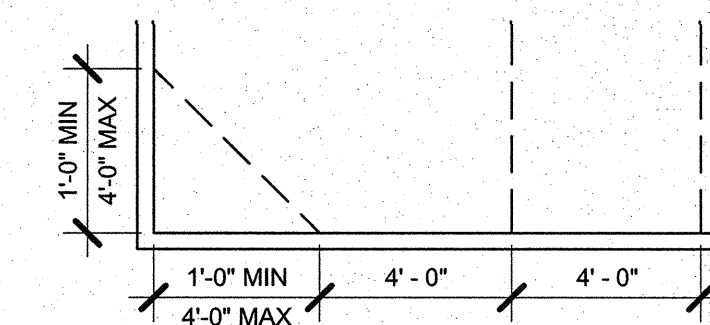
IN EXISTING BUILDING 100, RE-SPRAY APPLIED FIRE PROOFING, FILL DECK FLUTES, BEAMS, AND COLUMNS WHERE DEMOLITION HAS OCCURRED AND OR BEING RENOVATED. MAINTAIN FIRE-RATING OF ALL EXISTING STRUCTURAL ELEMENTS DURING ALL SEQUENCES OF CONSTRUCTION.

RULE 5 - OMIT BRACE WHERE PERPENDICULAR WALL IS WITHIN 3'-0"



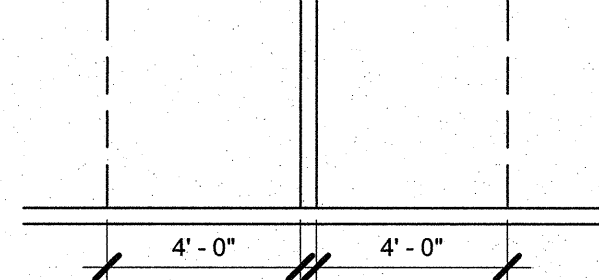
RULE 4 - BRACE AT OPENING OR WALL END WITHIN 2'-0"

DIAGONAL BRACE.....



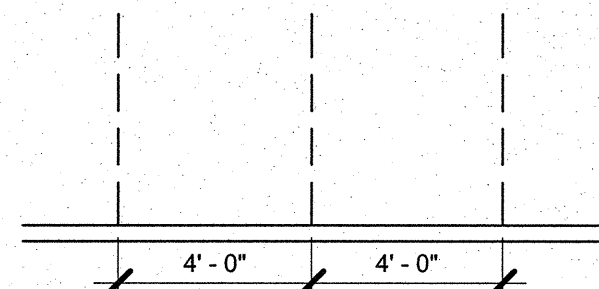
RULE 3 -

3" MINIMUM LENGTH TO QUALIFY AS LATERAL BRACE.



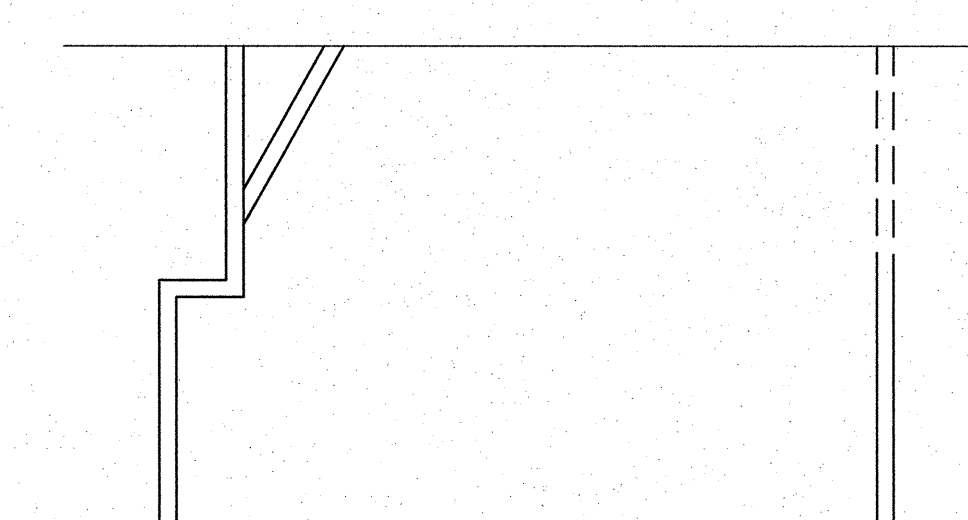
RULE 2 - OMIT BRACING AT PERPENDICULAR WALL

SEE TOP OF WALL BRACING DETAILS.

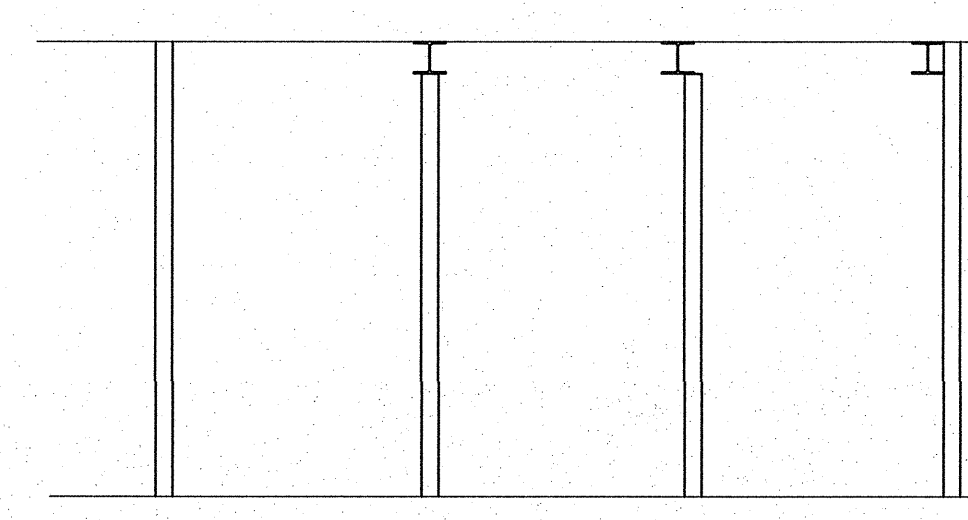


RULE 1 - BRACING EVERY 4'-0"

10 TYP. PARTITION ATTACHMENT & BRACING - PLANS
SCALE: 1/4" = 1'-0"



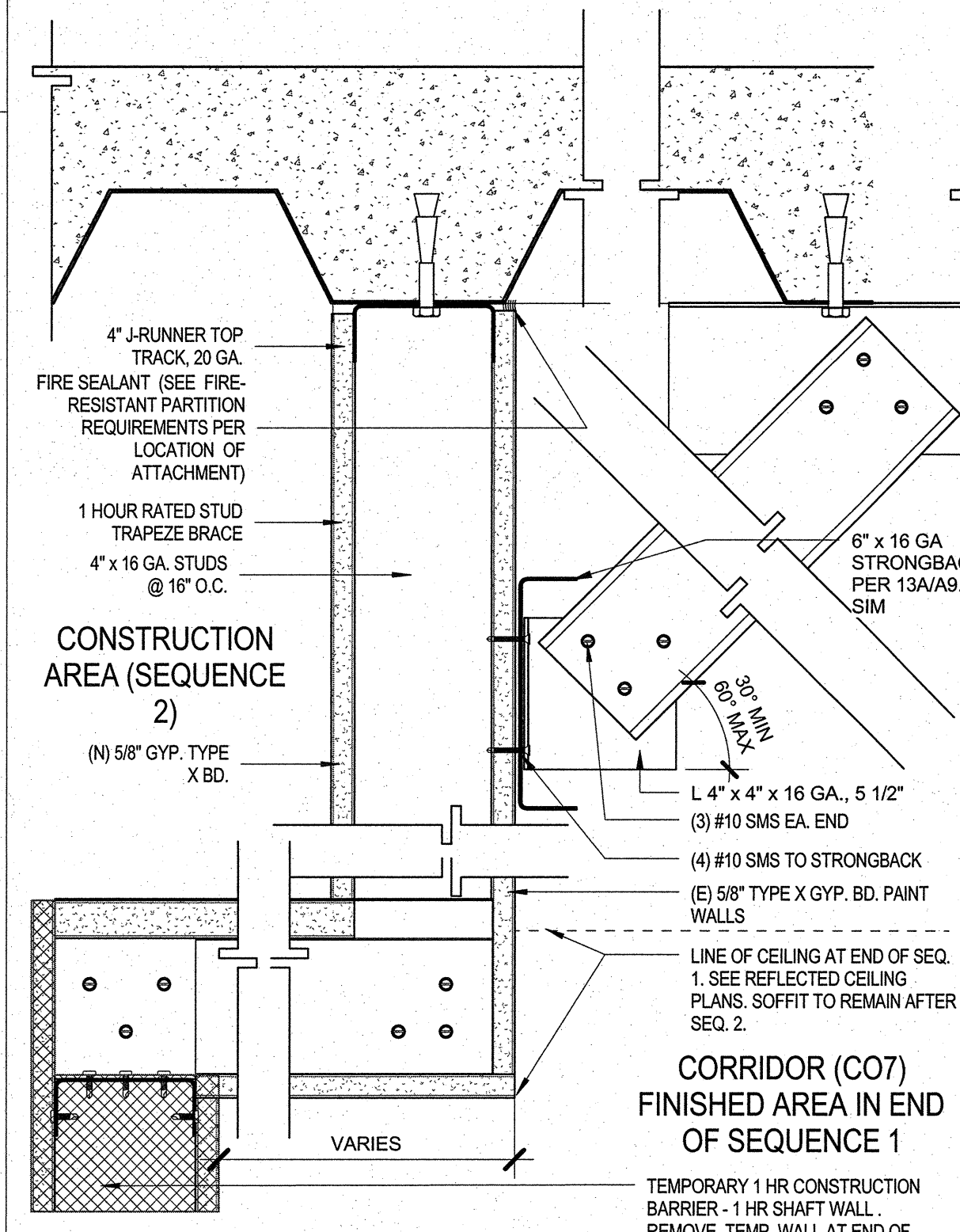
PARTIAL HEIGHT OR OFFSET STUDS
SEE RULES ABOVE FOR BRACING REQUIREMENTS



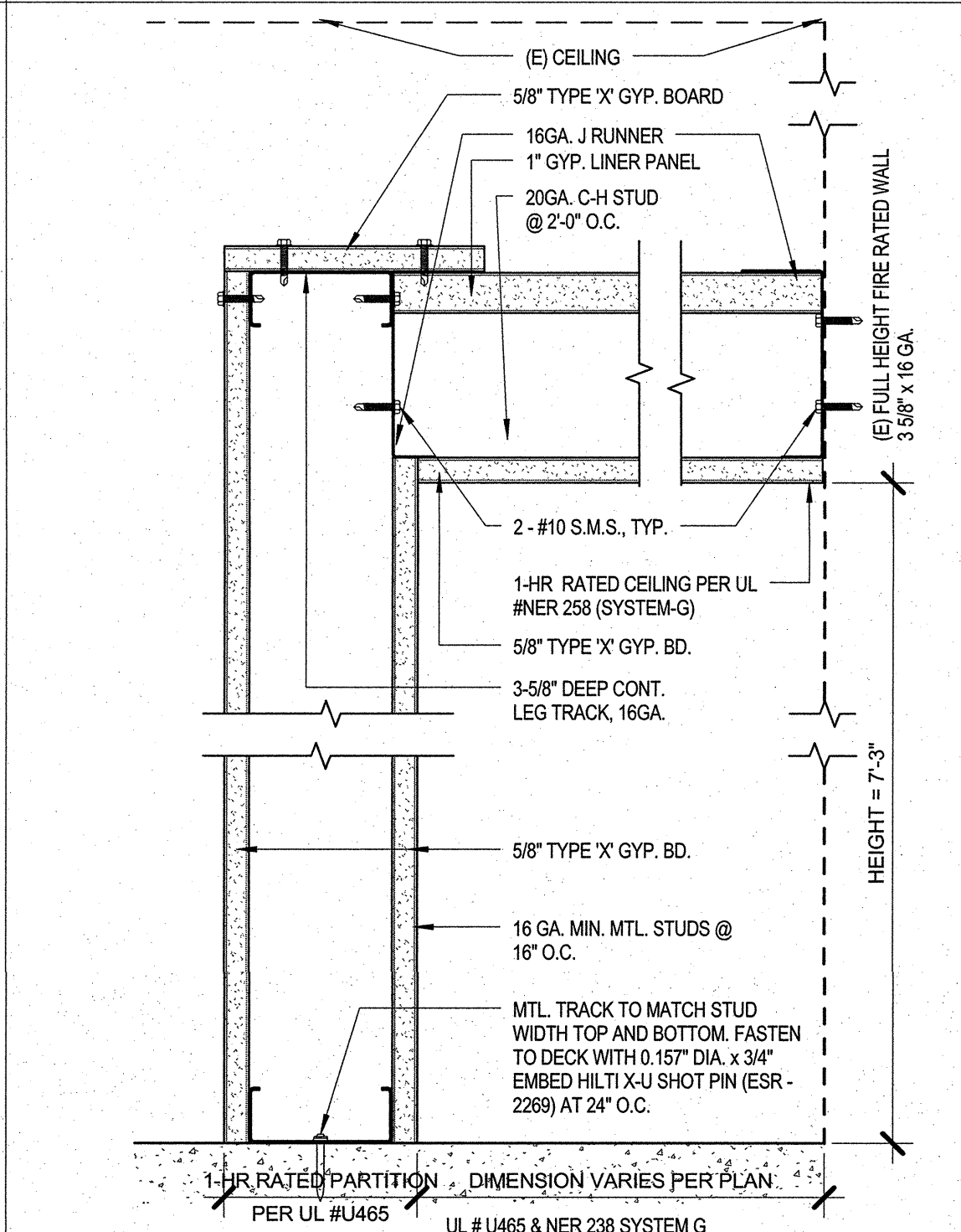
FULL HEIGHT STUDS

18 TYP. PARTITION ATTACHMENT & BRACING DIAGRAMS - SECTIONS
SCALE: 1/4" = 1'-0"

20 TOP OF FULL HEIGHT WALL @ SHAFT BOTTOM ENCLOSURE
SCALE: 3" = 1'-0"

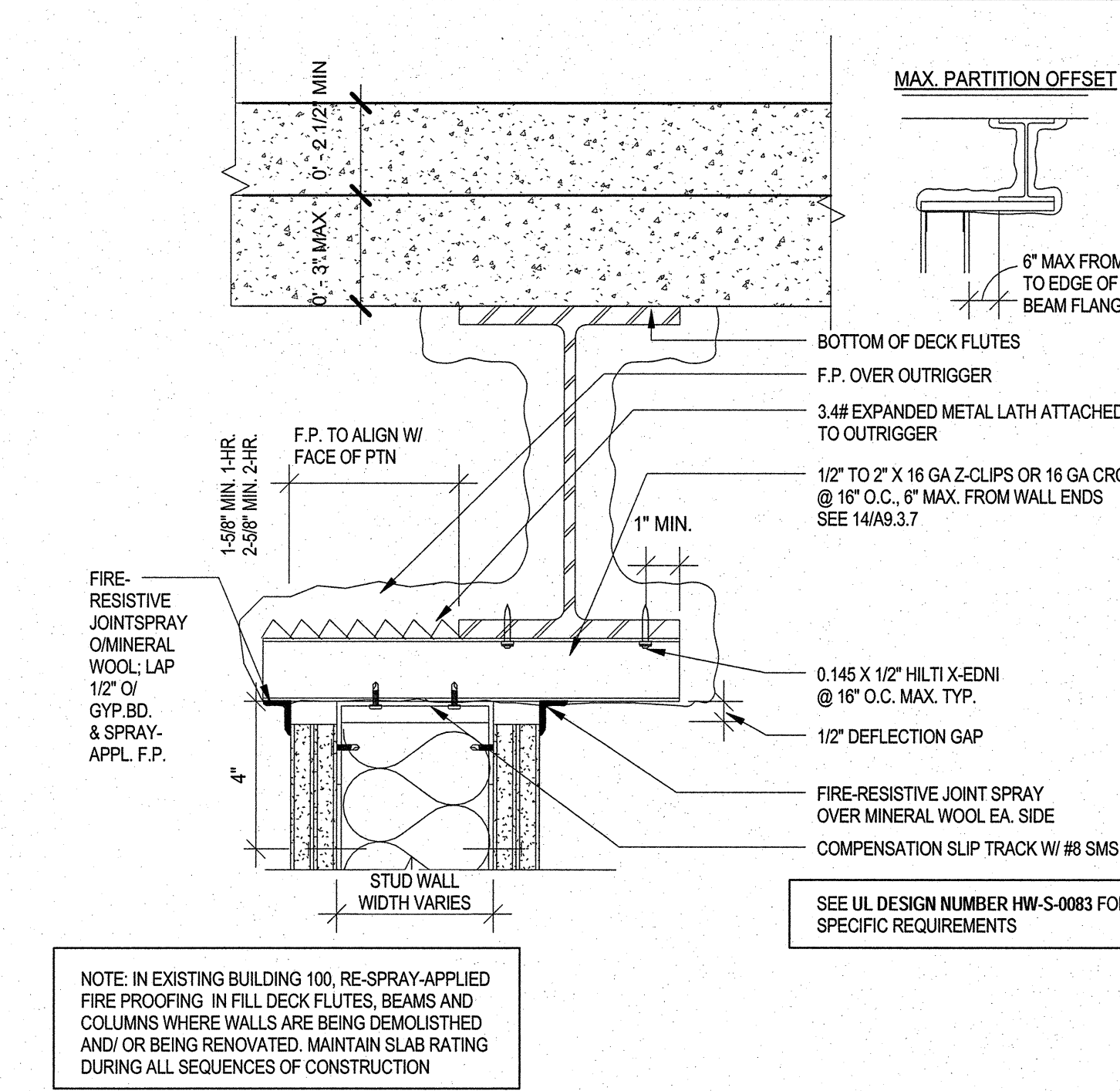


22 TEMP. CONST. PARTITION TO GYP BOARD SOFFIT @ SEQ. 2
SCALE: 3" = 1'-0"

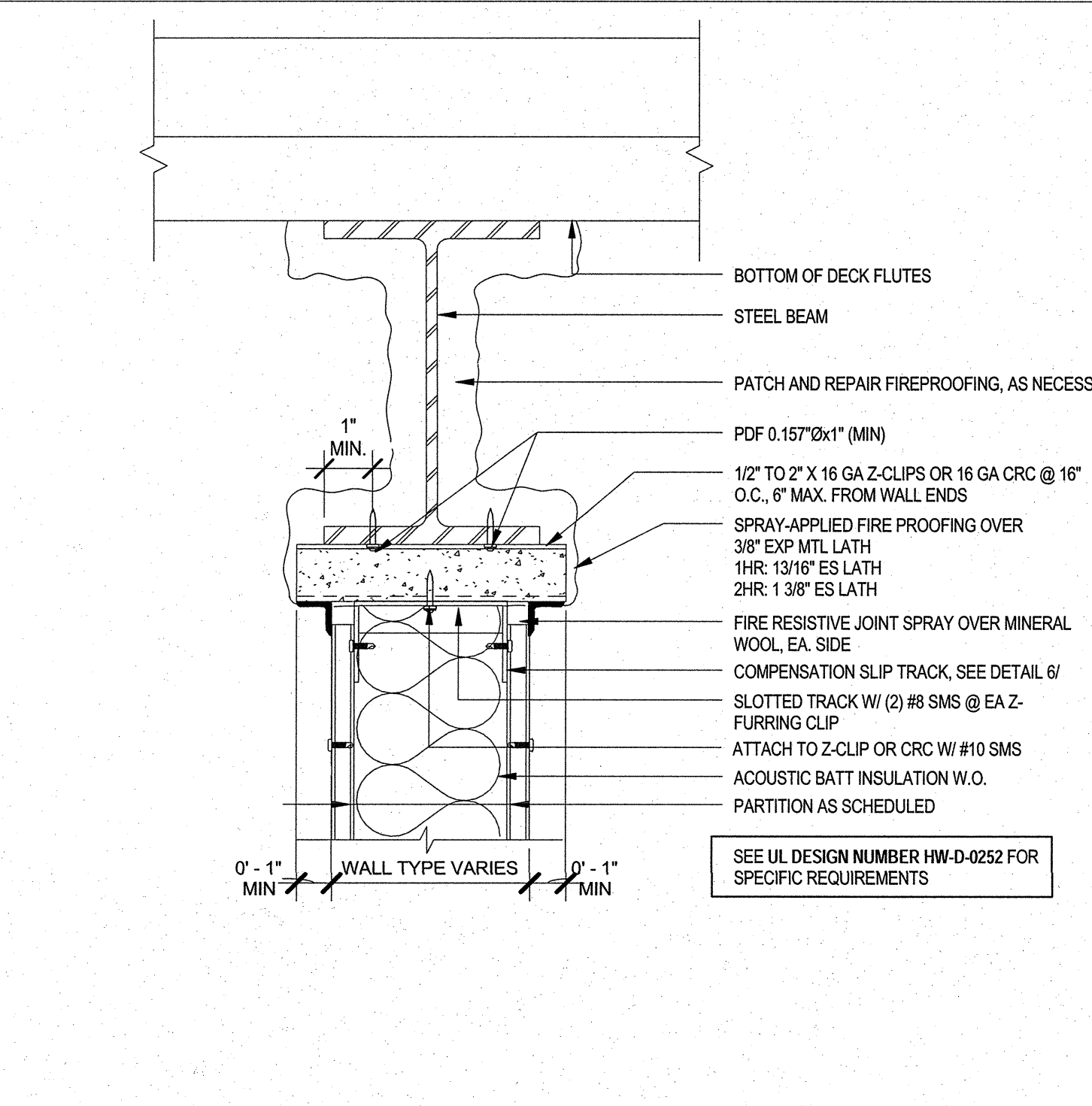


24 TEMPORARY BARRIER AT CORRIDOR
SCALE: 3" = 1'-0"

6 1 HOUR RATED WALL - ONE SIDE INACCESSIBLE
SCALE: 3" = 1'-0"

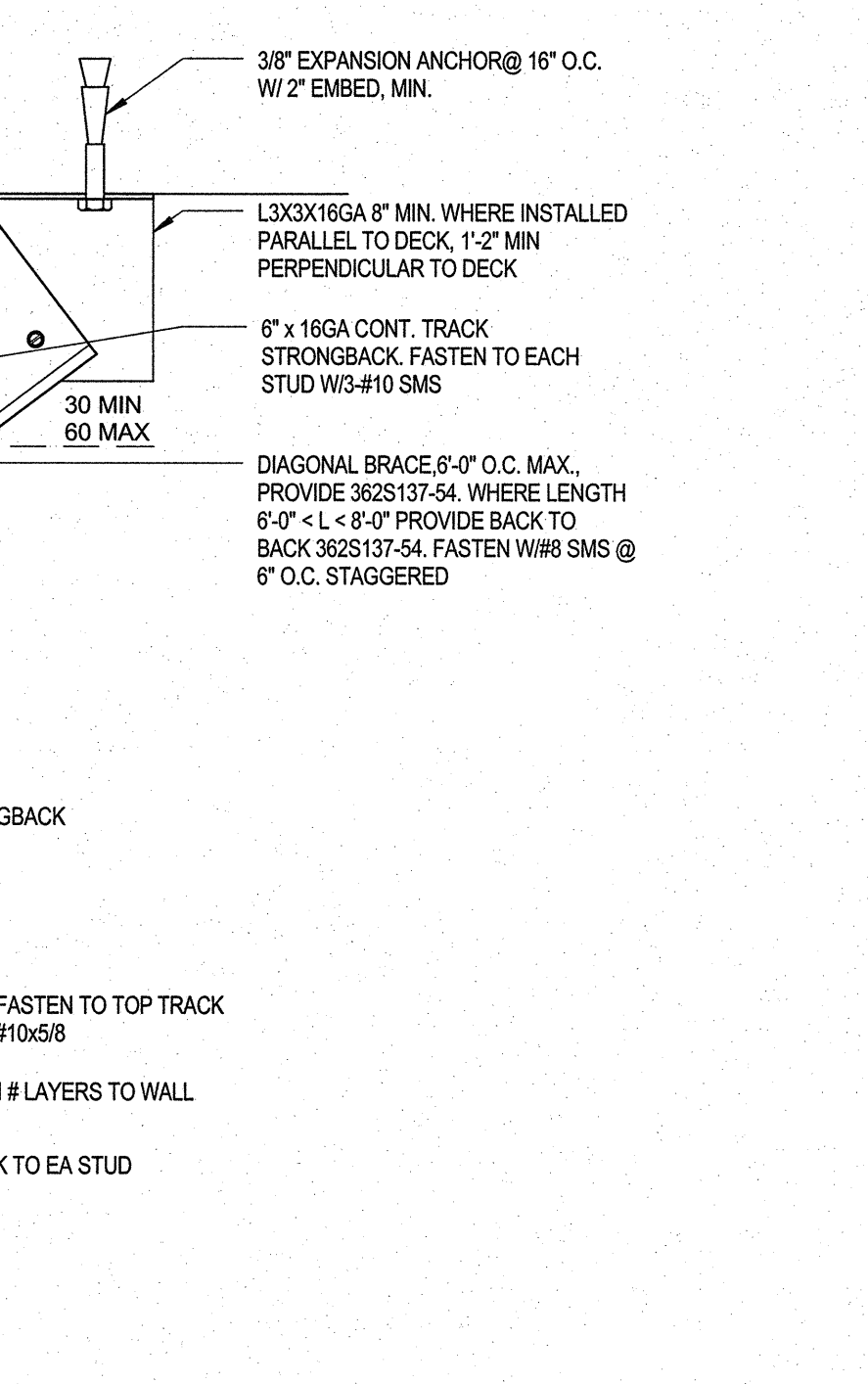


34 1 HR RATED - BOTTOM OF STEEL CONNECTION TO STRUCT WALL OFFSET.
SCALE: 3" = 1'-0"

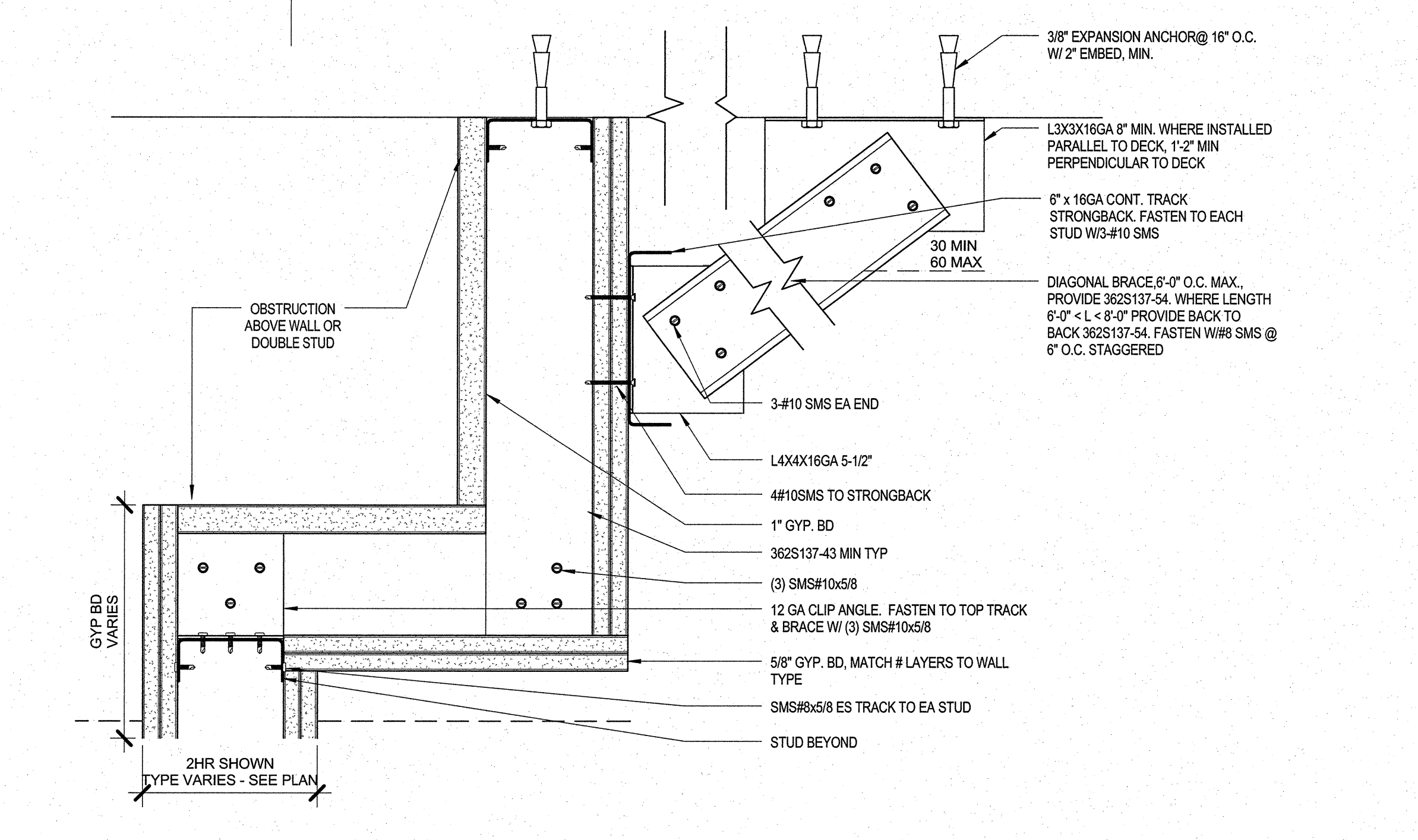


36 1 HOUR RATED CONNECTION UNDER BEAM
SCALE: 3" = 1'-0"

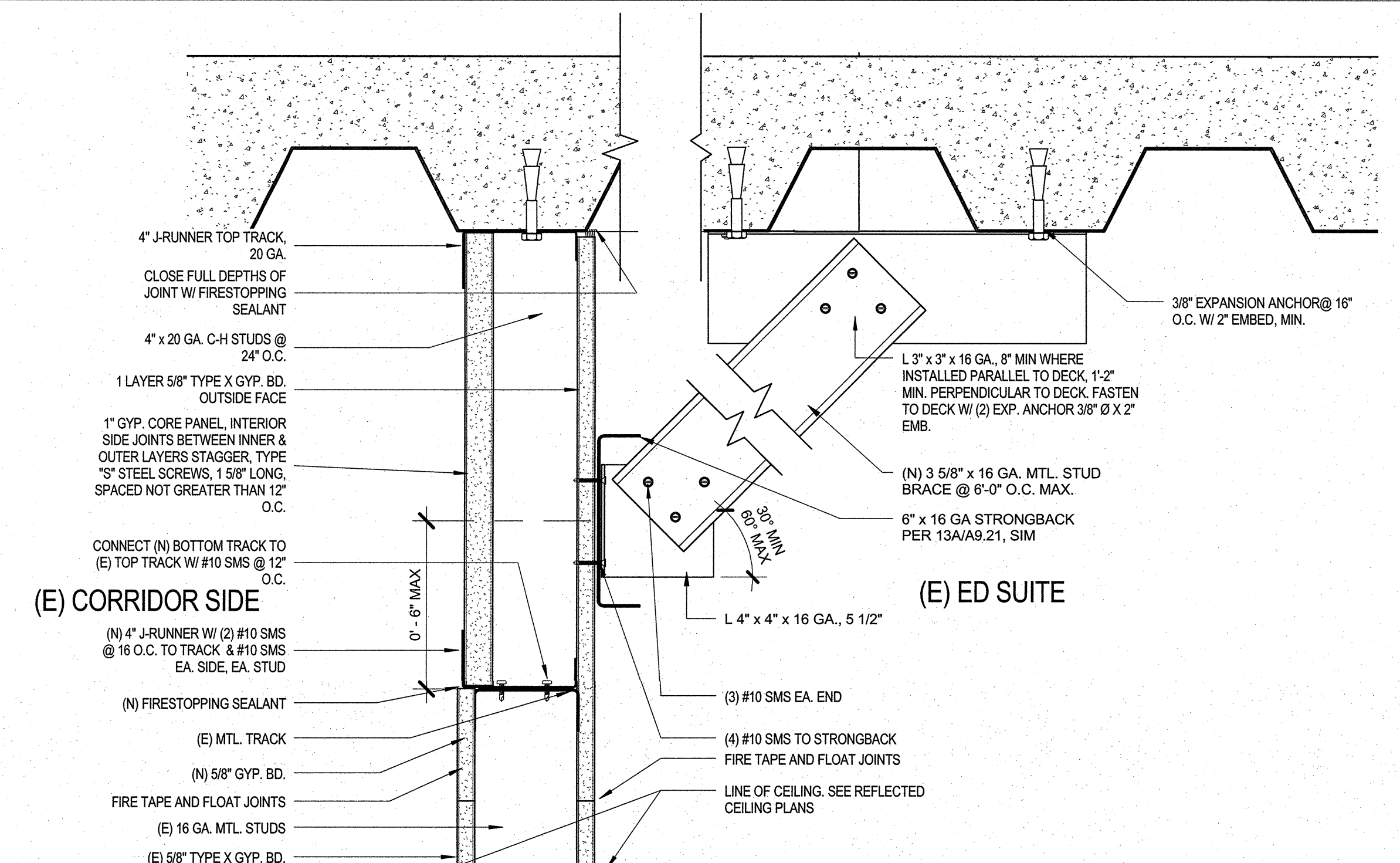
44 2 HOUR RATED SHAFT ENCLOSURE
SCALE: 1 1/2" = 1'-0"



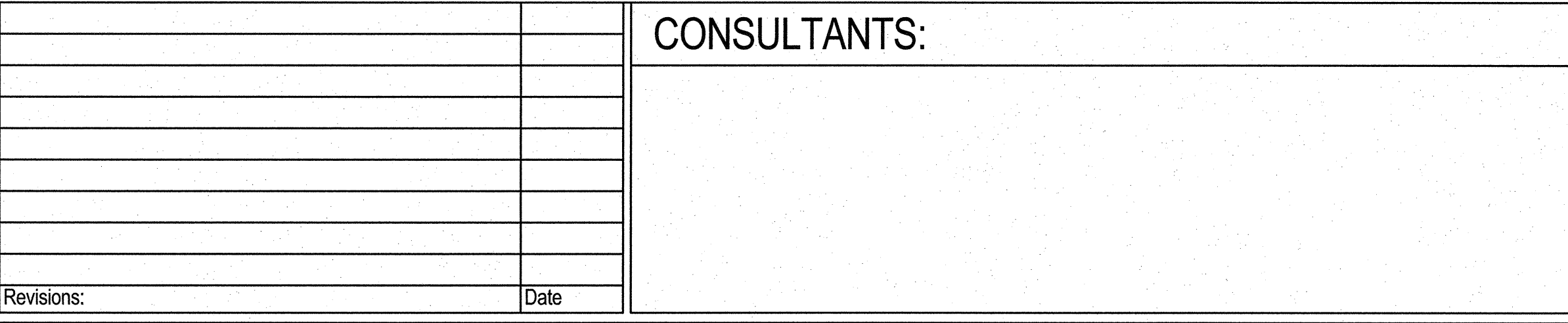
50 2-HOUR RATED SHAFT ENCLOSURE W/ BRACING
SCALE: 1 1/2" = 1'-0"



52 1 HOUR RATED WALL OFFSET TO DECK W/ TRAPEZE BRACE
SCALE: 3" = 1'-0"



54 1 HOUR RATED W/ BRACING
SCALE: 3" = 1'-0"



CONSULTANTS:

Seals and Signatures

ARCHITECT/ENGINEERS:

THE DESIGN PARTNERSHIP
1629 Telegraph Avenue, Suite 500 | Oakland, CA 94612
Phone: 415-777-3737 | Fax: 415-777-3476
www.dpsf.com

CANNONDESIGN
595 Market Street, 12th Floor | San Francisco, CA 94105
T 415.243.4170 | F 415.243.4176
www.cannondesign.com

Drawing Title
PARTITION DETAILS

Approved: Project Director

Project Title
VA PALO ALTO TO HEALTH CARE SYSTEM
EXPAND EMERGENCY DEPT. FACILITIES

Location
3801 Miranda Ave., Palo Alto CA

Date
APRIL 20, 2015

Checked

Drawn
NCH

Project Number
640-396

Building Number
100

Drawing Number
AE9.2.8

Office of
Construction
and Facilities
Management

Department of
Veterans Affairs