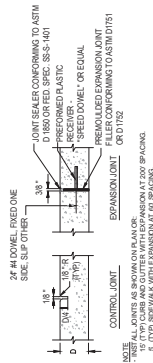
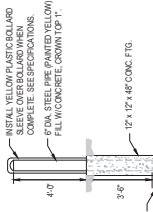


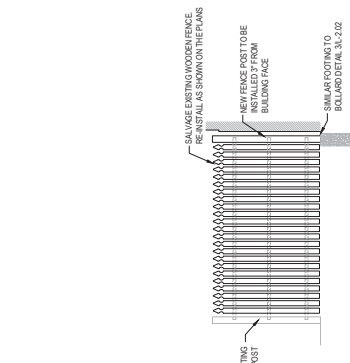
1	CONCRETE PAVEMENTS
L-202	NTA



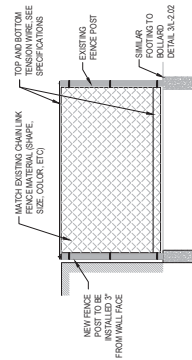
2	CONCRETE JOINTS
L-202	NIA



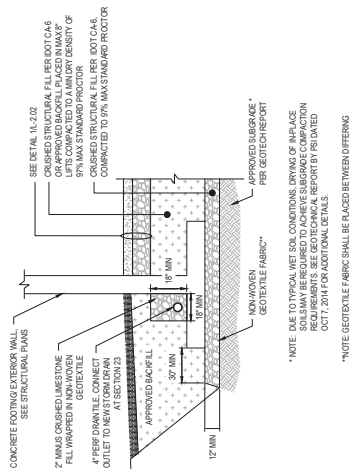
3
L-202



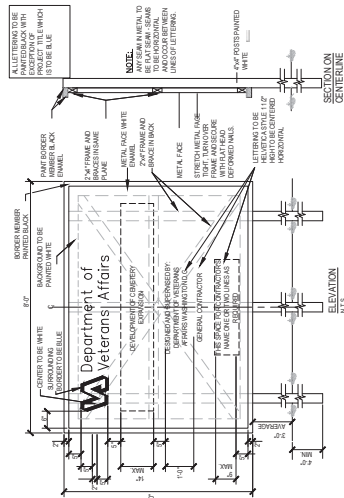
6
L-202



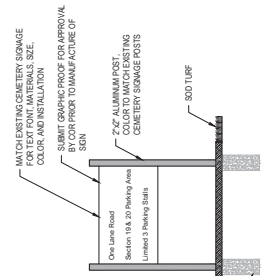
4	CHAIN LINK FENCE
L-202	RTA



6
L-202



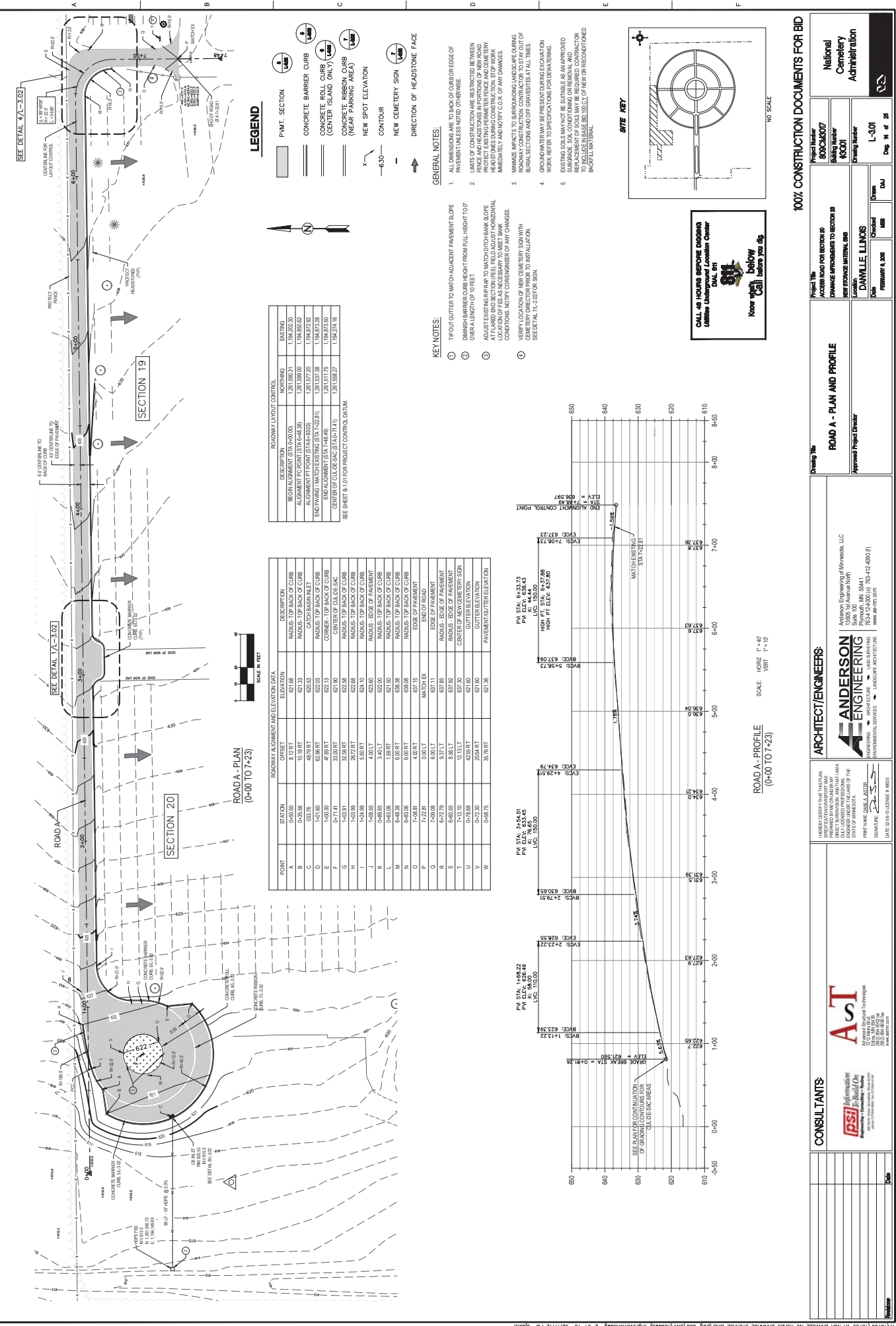
PROJECT CONSTRUCTION SIGN (LOCATED AT FRONT ENTRANCE)

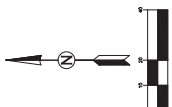


7
L-202
SECTION 19 & 20 ROAD SIGN
MTA

[illegible]

one eighth inch = one foot
one quarter inch = one foot
one half inch = one foot
three quarters inch = one foot
one inch = one foot
one and one half inch = one foot
two inches = one foot
three inches = one foot
four inches = one foot
five inches = one foot
six inches = one foot
seven inches = one foot
eight inches = one foot
nine inches = one foot
ten inches = one foot
eleven inches = one foot
twelve inches = one foot
thirteen inches = one foot
fourteen inches = one foot
fifteen inches = one foot
sixteen inches = one foot
seventeen inches = one foot
eighteen inches = one foot
nineteen inches = one foot
twenty inches = one foot
twenty one inches = one foot
twenty two inches = one foot
twenty three inches = one foot
twenty four inches = one foot
twenty five inches = one foot
twenty six inches = one foot
twenty seven inches = one foot
twenty eight inches = one foot
twenty nine inches = one foot
thirty inches = one foot
thirty one inches = one foot
thirty two inches = one foot
thirty three inches = one foot
thirty four inches = one foot
thirty five inches = one foot
thirty six inches = one foot
thirty seven inches = one foot
thirty eight inches = one foot
thirty nine inches = one foot
forty inches = one foot
forty one inches = one foot
forty two inches = one foot
forty three inches = one foot
forty four inches = one foot
forty five inches = one foot
forty six inches = one foot
forty seven inches = one foot
forty eight inches = one foot
forty nine inches = one foot
fifty inches = one foot
fifty one inches = one foot
fifty two inches = one foot
fifty three inches = one foot
fifty four inches = one foot
fifty five inches = one foot
fifty six inches = one foot
fifty seven inches = one foot
fifty eight inches = one foot
fifty nine inches = one foot
sixty inches = one foot
sixty one inches = one foot
sixty two inches = one foot
sixty three inches = one foot
sixty four inches = one foot
sixty five inches = one foot
sixty six inches = one foot
sixty seven inches = one foot
sixty eight inches = one foot
sixty nine inches = one foot
seventy inches = one foot
seventy one inches = one foot
seventy two inches = one foot
seventy three inches = one foot
seventy four inches = one foot
seventy five inches = one foot
seventy six inches = one foot
seventy seven inches = one foot
seventy eight inches = one foot
seventy nine inches = one foot
eighty inches = one foot
eighty one inches = one foot
eighty two inches = one foot
eighty three inches = one foot
eighty four inches = one foot
eighty five inches = one foot
eighty six inches = one foot
eighty seven inches = one foot
eighty eight inches = one foot
eighty nine inches = one foot
ninety inches = one foot
ninety one inches = one foot
ninety two inches = one foot
ninety three inches = one foot
ninety four inches = one foot
ninety five inches = one foot
ninety six inches = one foot
ninety seven inches = one foot
ninety eight inches = one foot
ninety nine inches = one foot
one hundred inches = one foot





LEGEND

-

GENERAL NOTES:

1. SECTION 23 IS PLANNED AS A FUTURE DIRECT BURIAL AND CREMATION SITE AREA IS CURRENTLY VACANT LAND WITH NO REMAINS PRESENT.
 2. GROUNDWATER MAY BE PRESENT DURING EXCAVATION WORK. REFER TO SPECIFICATIONS FOR DEWATERING.
 3. EXCAVATED SOILS MAY NOT BE SUITABLE AS AN APPROVED MATERIAL FOR BACKFILL. SOIL CONDITIONING OR REMOVAL AND REPLACEMENT OF SOILS MAY BE REQUIRED.
- CONTRACTOR TO INCLUDE IN BASE BID 100 CY. OF NEW OR RECONDITIONED BACKFILL MATERIAL.

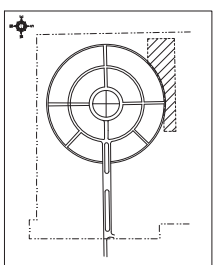
KEY NOTES:

- 1) CONNECT FOUNDATION DRAIN FROM MATERIAL STORAGE BUILDING TO CLEANOUT (POINT "1") WITH VERTICAL WYE AT ELEVATION 636.5. CONTRACTOR TO FIELD VERTICAL ELEVATION FOR CONNECTION. PROVIDE TEMPORARY DISCHARGING SUMP FOR BUILDING DRAIN TILE OUTLET IF MAINLINE STORM PIPE FOR SECTION 2315 IS NOT COMPLETE. REMOVE TEMPORARY SUMP AND REGRADE UPON CONNECTION.

CALL 48 HOURS BEFORE DIGGING
Utilize Underground Location Center
CALL 811



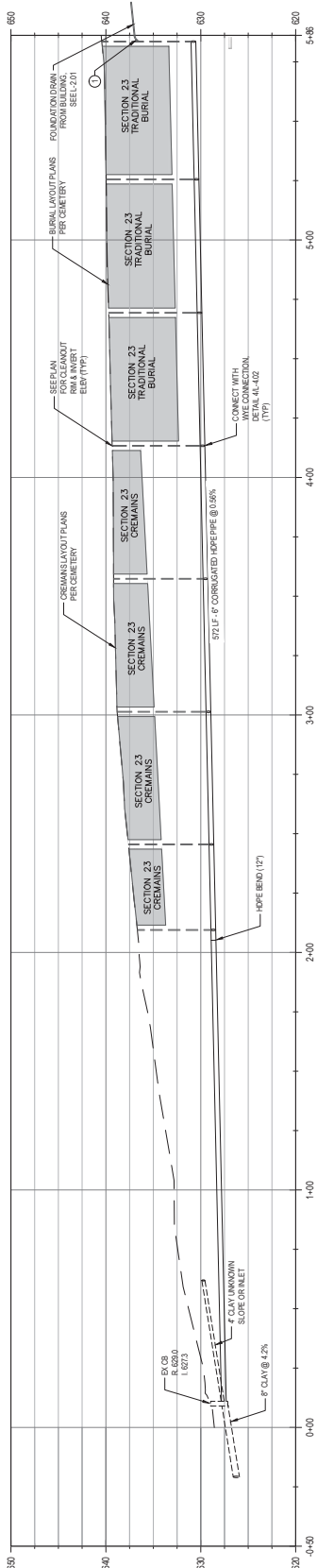
**Know what's below,
 Call before you dig.**



DRAINAGE - PLAN
(0+00 TO 5+86)

DRAINAGE ALLOCATION DATA			DESCRIPTION
POINT	STATION	CONCENTRATION	
J	5+23.14	0.001 LT	CLEANOUT
K	4+68.17	0.001 LT	CLEANOUT
L	4+12.96	0.001 LT	CLEANOUT
M	3+56.66	0.001 LT	CLEANOUT
N	3+00.94	0.001 LT	CLEANOUT
O	2+45.11	0.001 LT	CLEANOUT
P	2+09.11	0.001 LT	CLEANOUT
Q	2+04.72	0.001 LT	BEND

DRANGE ALIGNMENT DATA			DESCRIPTION
POINT	STATION	OFFSET	
A	2+00.01	41.80 LT	GLENOUIT
B	2+44.46	46.40 LT	GLENOUIT
C	3+00.36	55.19 LT	GLENOUIT
D	3+56.12	71.97 LT	GLENOUIT
E	4+11.78	96.76 LT	GLENOUIT
F	4+57.22	137.94 LT	GLENOUIT
G	5+23.31	193.33 LT	GLENOUIT
H	5+79.86	83.12 LT	GLENOUIT
I	5+81.15	0.00 LT	GLENOUIT



DRAINAGE - PROFILE
(0+00 TO 5+86)

SCALE: HORIZ 1"=20'
VERT 1"=5'

CONSULTANTS:

[psj] Information
To Build On
Engineering • Consulting • Training
485 South Street, Springfield, Illinois 62761
phone 217/353-1101 fax 217/353-4149
www.psjinc.com

ARCHITECT/ENGINEERS:


**ANDERSON
ENGINEERING**
ENGINEERING ARCHITECTURE LAND SURVEYING
ENVIRONMENTAL SERVICES LANDSCAPE ARCHITECTURE

Anderson Engineering of Minnesota, LLC
13605 1st Avenue North
Suite 100
Plymouth, MN 55441
763-412-4000 (o) 763-412-4090 (f)
www.aem-mn.com

GRADING & UTILITY PLAN

Approved Project Director	NEW STORAGE MATERIAL BINS			
	Location DAWILLE, ILLINOIS			
	Date FEBRUARY 4, 2015	Checked MBR	Drawn DAJ	

100% CONSTRUCTION DOCUMENTS FOR BID

Project Number 809CM017	 National Cemetery Administration
Bidding Number #3001	
<div>Draw</div> <div>DAU</div>	<div>Draw</div> <div>DAU</div>