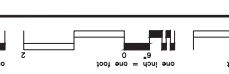


2
L-5.01
SOD DETAIL
NOT TO SCALE



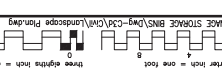
2 SOD DETAIL
NOT TO SCALE

1. CONTRACTOR MUST SUBMIT FOR APPROVAL BY THE CORP. A LOGISTICS PLAN THAT INDICATES ACCESS AND THE PROJECT LOGISTICS PLAN TO BE DISTURBED DURING INSTALLATION OF THE LANDSCAPE.
2. CONTRACTOR MUST FURNISH ANY DISTURBED AREAS TO SAME CONDITION AS ORIGINALLY EXISTING AND TO THE CORP'S SATISFACTION, IN AREAS WHERE EXISTING GRASS, SOIL, ROCKS, TREES AND SHRUBS, GROUNDCOVERS AND FERTILIZER ARE NOT DISTURBED. CONTRACTOR MUST FURNISH LANDSCAPE (TREE SPECIES, PLANT SPECIES, SHRUBS, GROUNDCOVERS AND FERTILIZER) OF LIKE KIND, QUANTITY, SPECIES, QUALITY AND TYPE.
3. CLEAN ON-SITE TOPSOIL SHALL BE SHIPPED AND STOCKPILED AT THE CORP'S FACILITY. CONTRACTOR SHALL NOT REUSE TOPSOIL SPECIFIED AFTER LIGHT COMPACTION.
4. ALL DISTURBED AREAS OUTSIDE OF THE LIMITS OF WORK SHALL BE RESTORED TO ORIGINAL CONDITION INCLUDING TOPSOIL, SOD, MULCH AND/OR ADDITIONAL SOIL TO THE SAME OR BETTER CONDITION. CONTRACTOR SHALL SUBMIT A REPAIR PLAN FOR THE DISTURBED AREAS OUTSIDE OF THE LIMITS OF WORK FOR THE CORP'S REVIEW AND APPROVAL. REPAIRS SHALL BE COMPLETED WITHIN 14 DAYS OF THE CORP'S REQUEST.

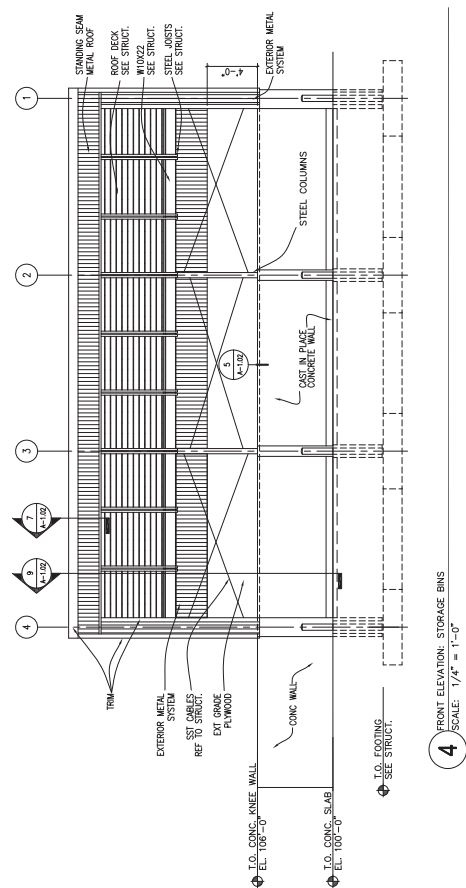
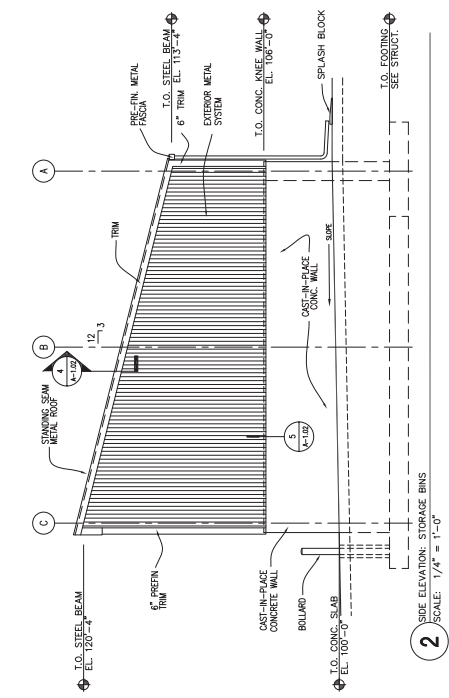
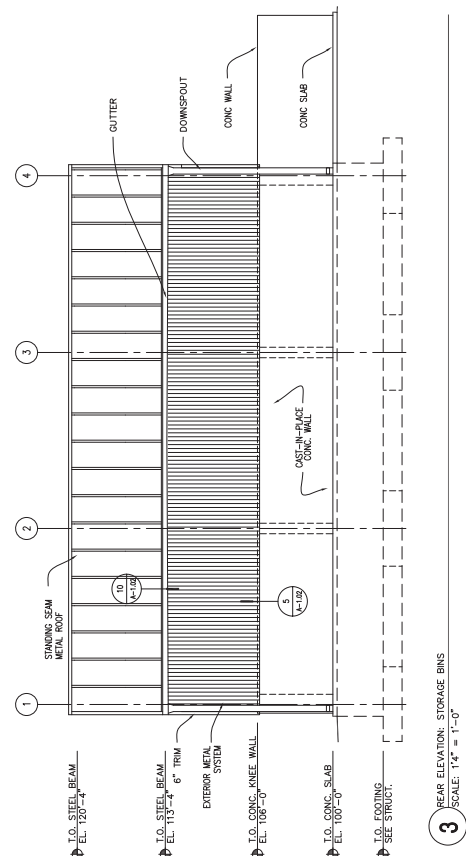
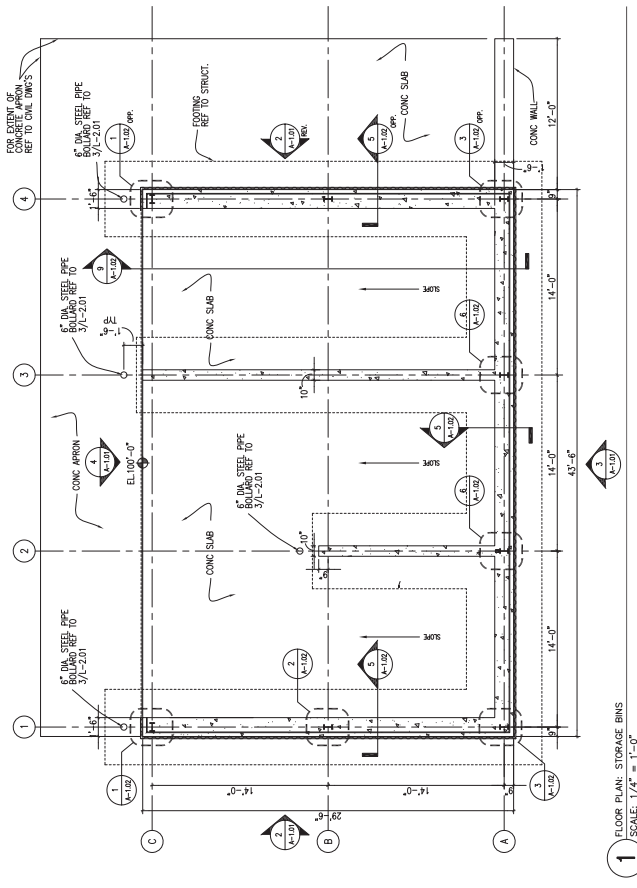
After inch = one foot

ADDRESS

DATA



one eighth inch = one foot



CONSULTANTS:

rsi *Information To Build On*
Engineering • Consulting • Training
4401 Hennepin Avenue, Suite 200
Minneapolis, MN 55412
Phone: 612.338.7700 Fax: 612.338.7701
www.rsi.com

ARCHITECT/ENGINEERS:

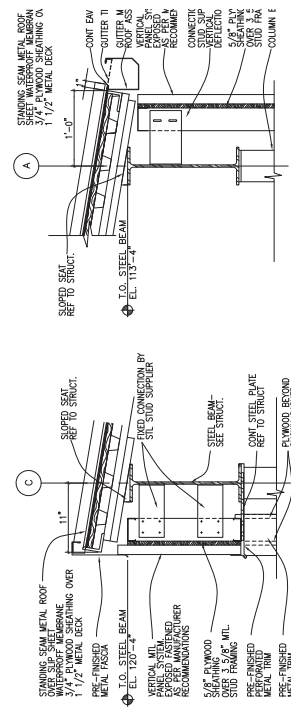
ANDERSON ENGINEERING
ARCHITECTURE • LAND SURVEYING
ENGINEERING • ENVIRONMENTAL SERVICES • LANDSCAPE ARCHITECTURE
Anderson Engineering of Minnesota, LLC
25805 18 Avenue North
Plymouth, MN 55441
763-412-4000 (o) 763-412-4000 (f)
www.aemtl.com

PROJECT: DANVILLE NATIONAL CEMETERY
LOCATION: DANVILLE, ILLINOIS
DATE: FEBRUARY 6, 2006

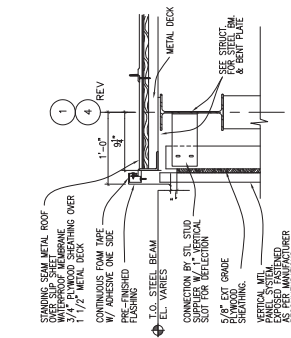
PROJECT NO.: 008-046-007
DRAWING NO.: A-101
DATE: FEBRUARY 6, 2006

DESIGNED BY: [Signature]
CHECKED BY: [Signature]
APPROVED BY: [Signature]

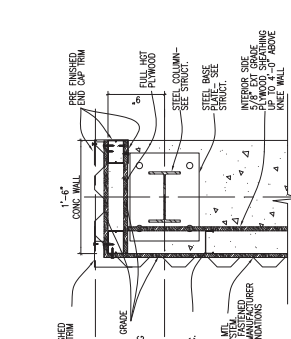
Office of Construction and Facilities Management



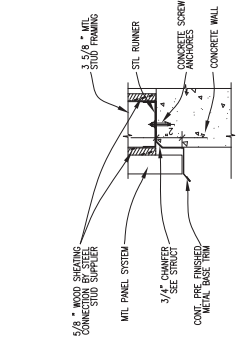
19 ROOF EDGE DETAIL
1/8" = 1'-0" SCALE 1/2" = 1'-0"



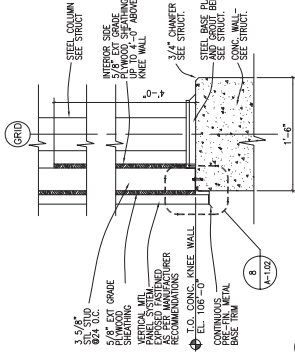
20 ROOF EDGE DETAIL
1/8" = 1'-0" SCALE 1/2" = 1'-0"



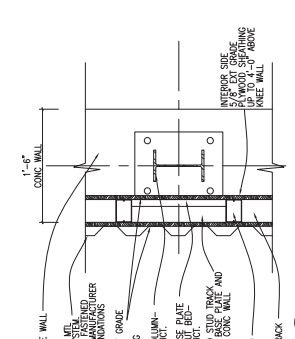
21 ROOF EDGE DETAIL
1/8" = 1'-0" SCALE 1/2" = 1'-0"



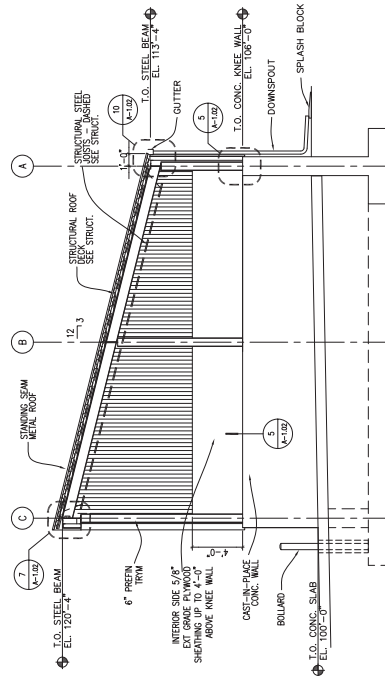
22 METAL WALL FIXING DETAIL
1/8" = 1'-0" SCALE 1/2" = 1'-0"



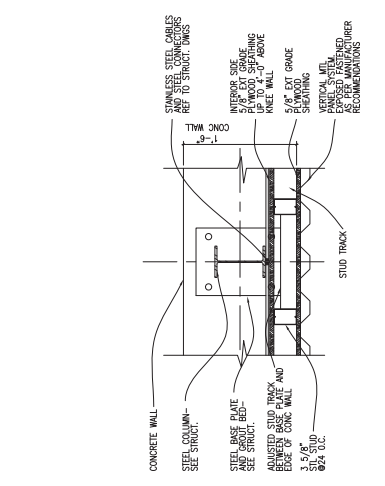
23 METAL WALL / KNEE WALL DETAIL
1/8" = 1'-0" SCALE 1/2" = 1'-0"



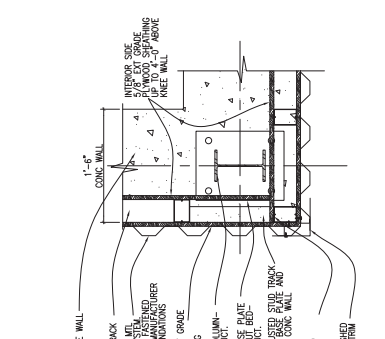
24 COLUMN / WALL DETAIL
1/8" = 1'-0" SCALE 1/2" = 1'-0"



25 BUILDING SECTION STORAGE BIN
1/8" = 1'-0" SCALE 1/2" = 1'-0"



26 MID COLUMN / WALL DETAIL
1/8" = 1'-0" SCALE 1/2" = 1'-0"



27 CORNER DETAIL
1/8" = 1'-0" SCALE 1/2" = 1'-0"

100% CONSTRUCTION DOCUMENTS FOR BID

CONSULTANTS:		ARCHITECT/ENGINEERS:		BUILDING SECTION AND DETAILS		Office of Construction and Facilities Management	
Advanced Structural Technology 1000 1st Avenue North Edina, MN 55439 (612) 844-8888 www.ast.com		ANDERSON ENGINEERING ENGINEERING • ARCHITECTURE • LAND SURVEYING ENVIRONMENTAL SERVICES • LANDSCAPE ARCHITECTURE 13905 18 Avenue North Plymouth, MN 55441 763-412-4000 (o) 763-412-4000 (f) www.aecm.com		DANVILLE LINCOLN		DANVILLE LINCOLN	
PREPARED BY: [Blank]		DESIGNED BY: [Blank]		CHECKED BY: [Blank]		DATE: FEBRUARY 6, 2006	
DRAWN BY: [Blank]		SCALE: [Blank]		SHEET: [Blank]		PROJECT: 005-C46-07	
DATE: [Blank]		BY: [Blank]		FOR: [Blank]		SHEET: A-102	
PROJECT: 005-C46-07		SHEET: A-102		DATE: FEBRUARY 6, 2006		SHEET: 20 of 25	