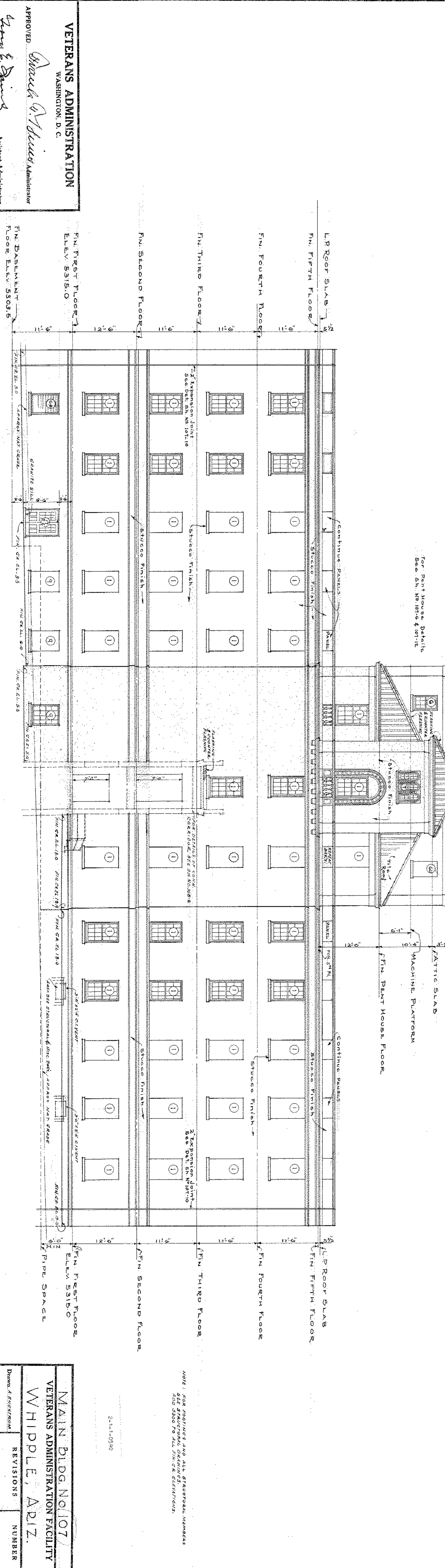


ELEVATION "E-E"
SCALE 1/8" = 1'-0"



VETERANS ADMINISTRATION
WASHINGTON, D. C.
APPROVED: *Charles G. Whipple* Assistant Administrator
W. E. Spence Director of Construction
W. J. Parker Chief, Technical Division

MAIN BLDG. NO. 107 VETERANS ADMINISTRATION FACILITY WHIPPLE, ARIZ.	
Drawn: A. K. H. 10/10/37	REVISIONS
Traced: S. A. G. 10/10/37	NUMBER
Sect. CH. R. E. G. 107.9	107.9
Date: May 30, 1937	SHEET 7 OF 51
Sub-division Chief: <i>W. J. Parker</i>	Proj. No. 1155