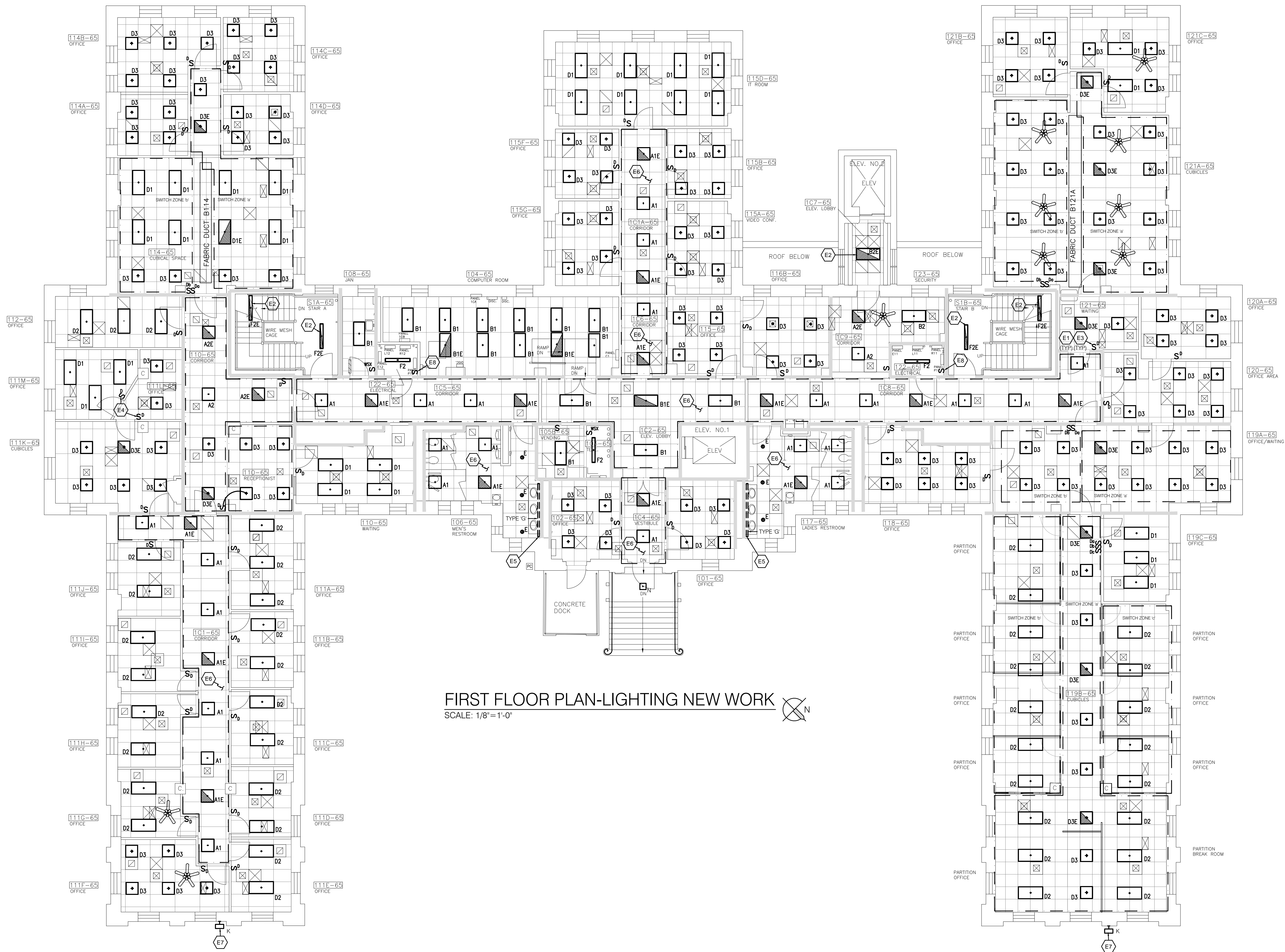


FLOOR PLAN NOTES

- REFERENCE LIGHTING CONTROL SHEET AND ROOM CONTROL DETAIL SHEET FOR ADDITIONAL CONTROLS AND INFORMATION.
- FIXTURE IN THIS AREA IS CONTROLLED BY MOTION SENSOR ONLY WITH 50% LIGHT OUTPUT WHEN UNOCCUPIED. WHEN OCCUPIED LIGHT SHALL COME ON TO 100% FULL OUTPUT. UPON EMERGENCY ACTIVATION EMERGENCY BALLAST SHALL OVER-RIDE MOTION SENSOR AND BE POWERED BY THE EMERGENCY BALLAST.
- PROVIDE AND INSTALL SENSOR H/LIGHT H/PODM-SX-X (ON/OFF-RAISE LOWER BUTTON) DIMMING WALL SWITCH.
- ROUGH-IN AND PROVIDE AND INSTALL SENSOR H/LIGHT H/PODM-SX-X (ON/OFF-RAISE LOWER BUTTON) DIMMING WALL SWITCH.
- INSTALL NEW LOW VOLTAGE LED MINI COVE LIGHT COMPLETELY AROUND THE MIRROR. INSTALL DRIVE ABOVE ACCESSIBLE CEILING. CONNECT TO EXISTING LIGHT CIRCUIT MAINTAIN DURING DEMOLITION WORK.
- HALL/ROOM CONTROLLED BY MOTION SENSOR ONLY.
- INSTALL NEW EXTERIOR FIXTURE OVER EXISTING LOCATION.
- PROVIDE AND INSTALL INTERMATIC E215X (HOLD. 15/30/60 MIN 2/4 HOUR) TIMER OR EQUAL BY SENSOR SWITCH TIMER SWITCH.



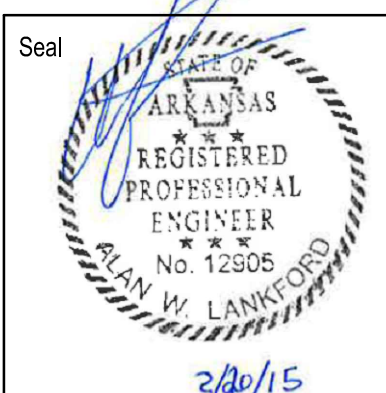
FIRST FLOOR PLAN-LIGHTING NEW WORK
SCALE: 1/8"=1'-0"



Revision	Date
100% For Construction	02.20.15

CONSULTANTS:

Lankford | Fendler
and Associates
1730 Walnut Street
Kansas City, MO
64108
816.221.1411



ARCHITECT / ENGINEER:

**TOMPKINS
ARCHITECTS**
507 Walnut Street, Suite 200, Kansas City, MO 64106
p. 816 472.5656 f. 816 472.5637 www.tom-arch.com

COPYRIGHT 2015 BY TOMPKINS ARCHITECTS, INC. ALL RIGHTS RESERVED. NO PART OF THESE DOCUMENTS MAY BE REPRODUCED, STORED IN A RETRIEVAL SYSTEM, OR TRANSMITTED IN ANY FORM OR BY ANY MEANS, ELECTRONIC, MECHANICAL, PHOTOGRAPHIC, RECORDING, OR OTHERWISE, WITHOUT THE PRIOR WRITTEN PERMISSION OF TOMPKINS ARCHITECTS, INC.

Drawing Title

**FIRST FLOOR PLAN
LIGHTING NEW WORK**

Approved: Project Director

Project Title

**BUILDING 65
BUILDING DESIGN FOR LIGHTING
IMPROVEMENT**

Date

February 20, 2015

Checked

GJF

Drawn

BCD

Project Number

VA101V-14C-0104

Building Number

65

Drawing Number

E202

**CENTRAL
ARKANSAS VA
HEALTH CARE
SYSTEM**

Department of
Veterans Affairs

Lankford | Fendler
+ associates
1730 Walnut Street, Kansas City, Missouri 64108
1000 College Boulevard, Suite 400, Overland Park, Kansas 66111
Phone: 816.221.1411 | Fax: 816.221.1429
LANKFORD | FENDER + ASSOCIATES CONSULTING ENGINEERS, INC.
COPYRIGHT © 2015. Project No. 4884