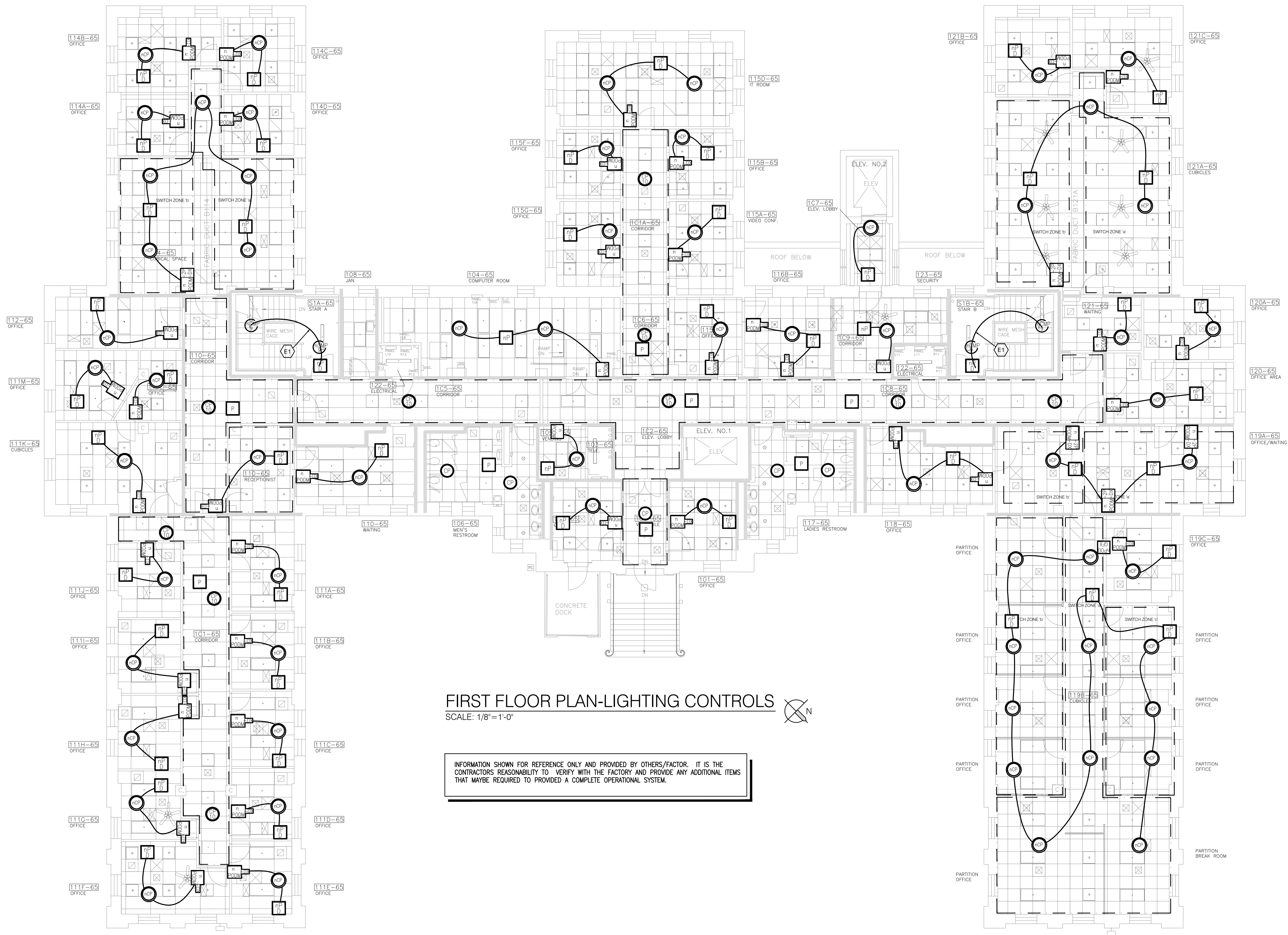


FLOOR PLAN NOTES

1. INSTALL CONTROL WIRING IN CONDUIT AND PAINT TO MATCH EXISTING SURFACE.



FIRST FLOOR PLAN-LIGHTING CONTROLS

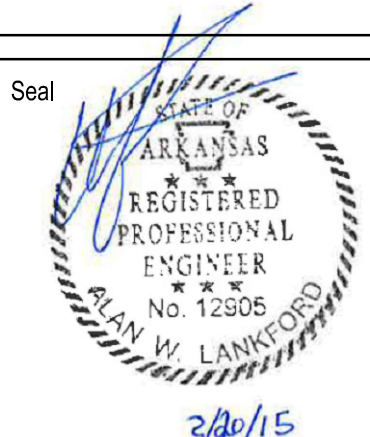
SCALE: 1/8"=1'-0"

INFORMATION SHOWN FOR REFERENCE ONLY AND PROVIDED BY OTHERS/FACTOR. IT IS THE CONTRACTORS REASONABILITY TO VERIFY WITH THE FACTORY AND PROVIDE ANY ADDITIONAL ITEMS THAT MAYBE REQUIRED TO PROVIDED A COMPLETE OPERATIONAL SYSTEM.

Revision	Date
100% For Construction	02.20.15

CONSULTANTS:

Lankford | Fendler
and Associates
1730 Walnut Street
Kansas City, MO
64108
816.221.1411



ARCHITECT / ENGINEER:

TOMPKINS ARCHITECTS
507 Walnut Street, Suite 200, Kansas City, MO 64106
p. 816 472.5656 f. 816 472.5637 www.tom-arch.com

COPYRIGHT 2015 BY TOMPKINS ARCHITECTS, INC. ALL RIGHTS RESERVED. NO PART OF THESE DOCUMENTS MAY BE REPRODUCED, STORED IN A RETRIEVAL SYSTEM, OR TRANSMITTED IN ANY FORM OR BY ANY MEANS, ELECTRONIC, MECHANICAL, PHOTO COPYING, RECORDING, OR OTHERWISE, WITHOUT THE PRIOR WRITTEN PERMISSION OF TOMPKINS ARCHITECTS, INC.

Drawing Title

FIRST FLOOR PLAN
LIGHTING CONTROLS

Approved: Project Director

Project Title

BUILDING 65
BUILDING DESIGN FOR LIGHTING
IMPROVEMENT

Date

February 20, 2015

Checked

GJF

Drawn

BCD

Project Number

VA101V-14C-0104

Building Number

65

Drawing Number

E202A

CENTRAL ARKANSAS VA HEALTH CARE SYSTEM



Lankford | Fendler
+ associates
1730 Walnut Street, Kansas City, Missouri 64108
816.221.1411
1730 Walnut Street, Suite 200, Kansas City, Missouri 64106
816.472.5656
FAX: 816.221.1411
LANKFORD | FENDLER + ASSOCIATES, CONSULTING ENGINEERS, INC.
COPYRIGHT © 2015. Project No. 4084