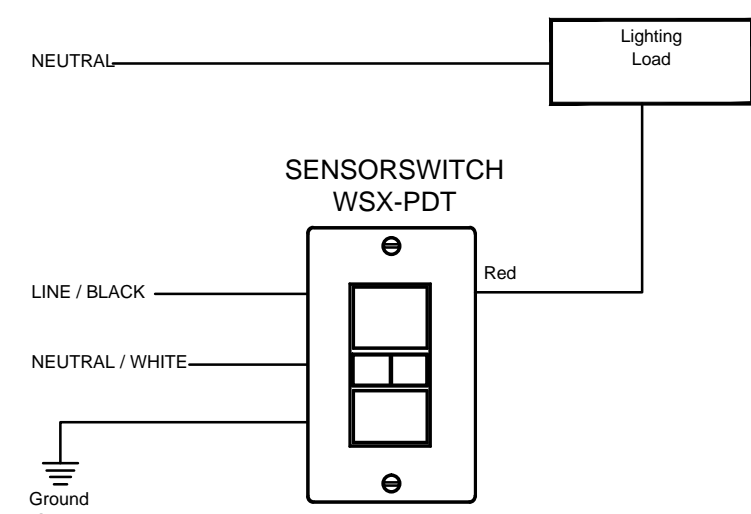
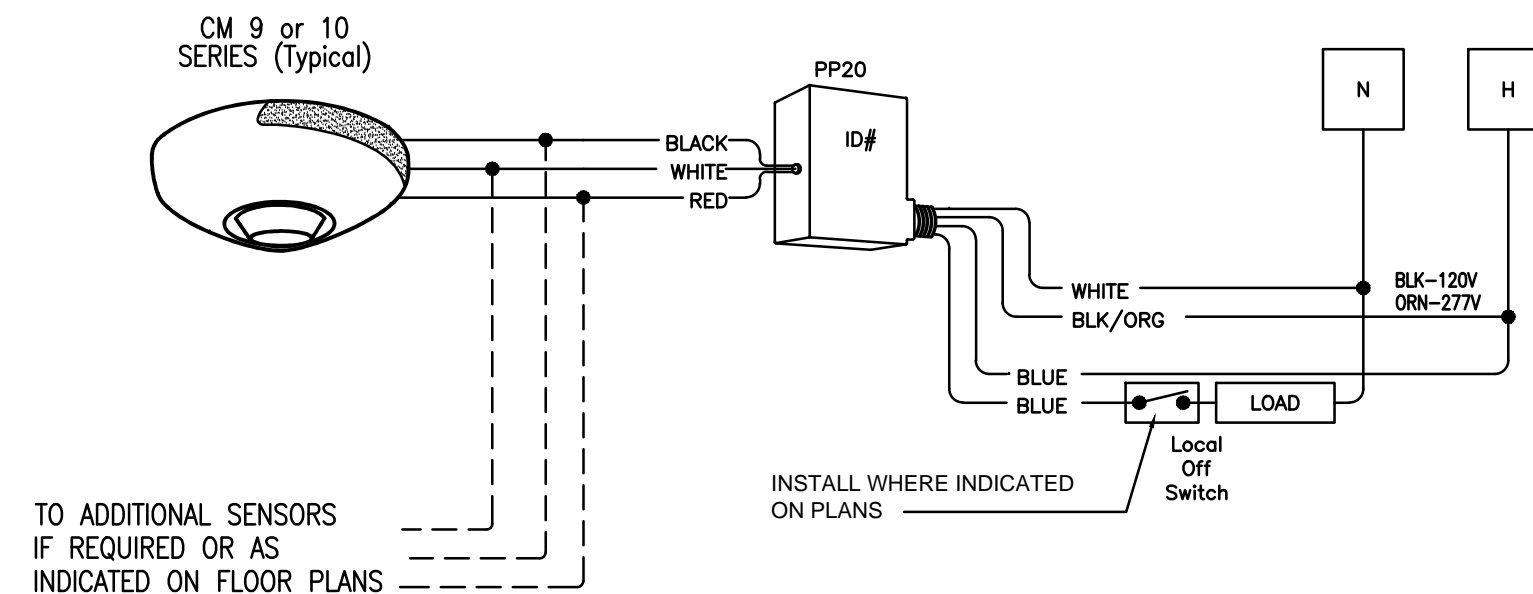


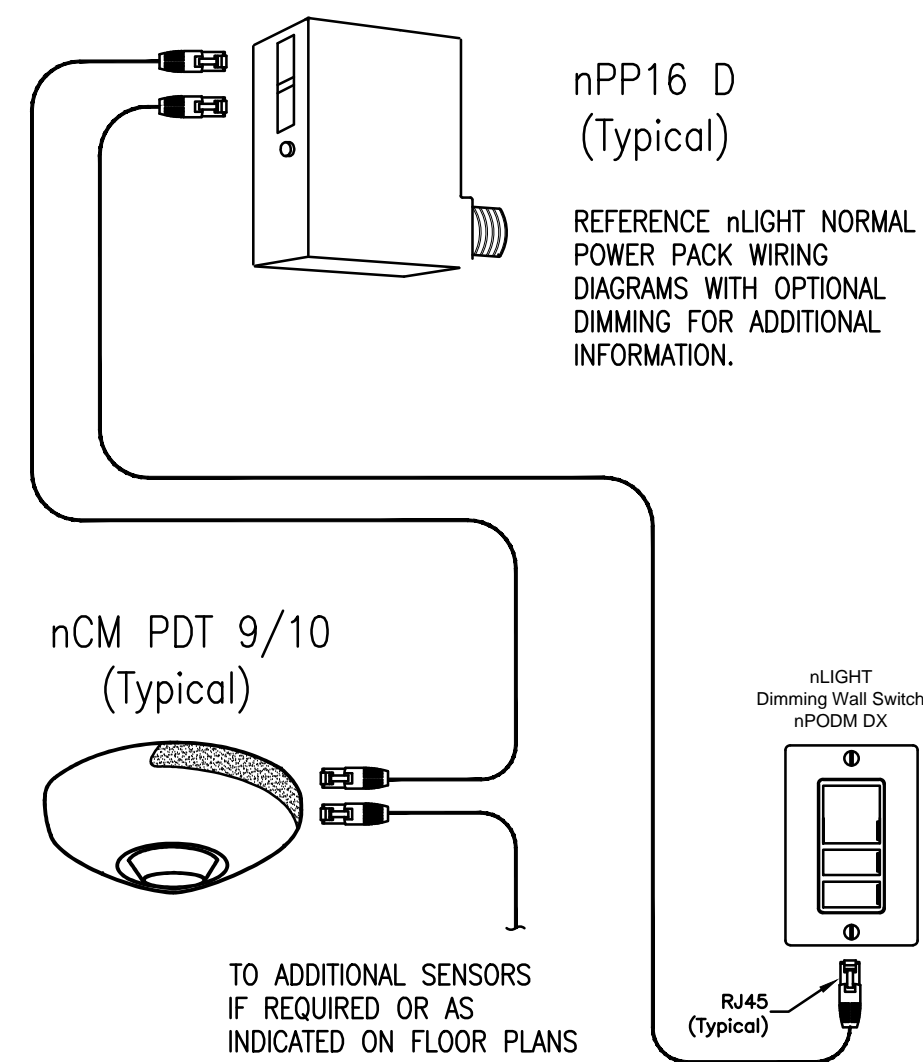
1 WALL MOUNTED SWITCH-SINGLE ZONE ON/OFF
NO SCALE



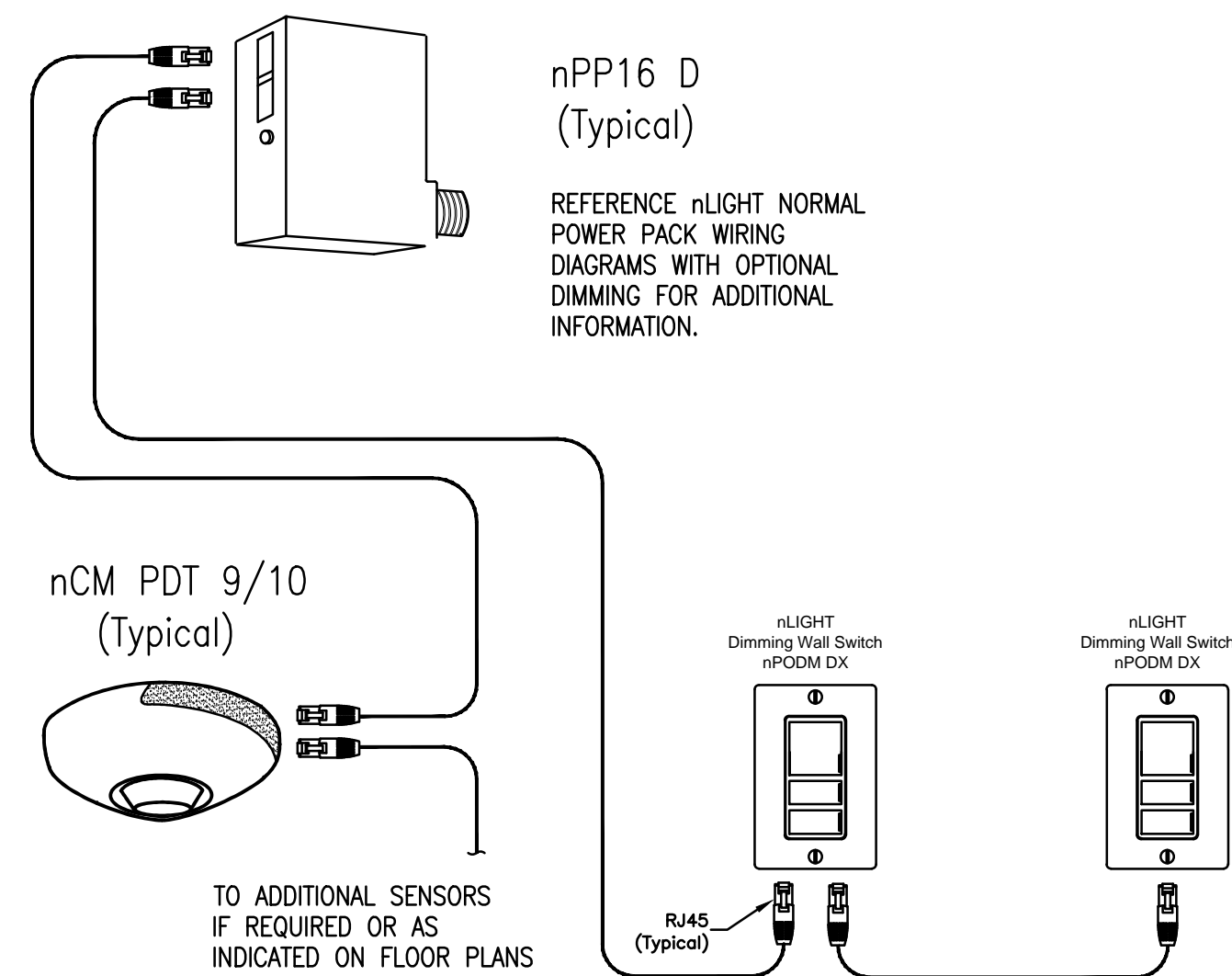
2 CEILING MOUNTED SENSOR
WITH ON/OFF CONTROL
NO SCALE



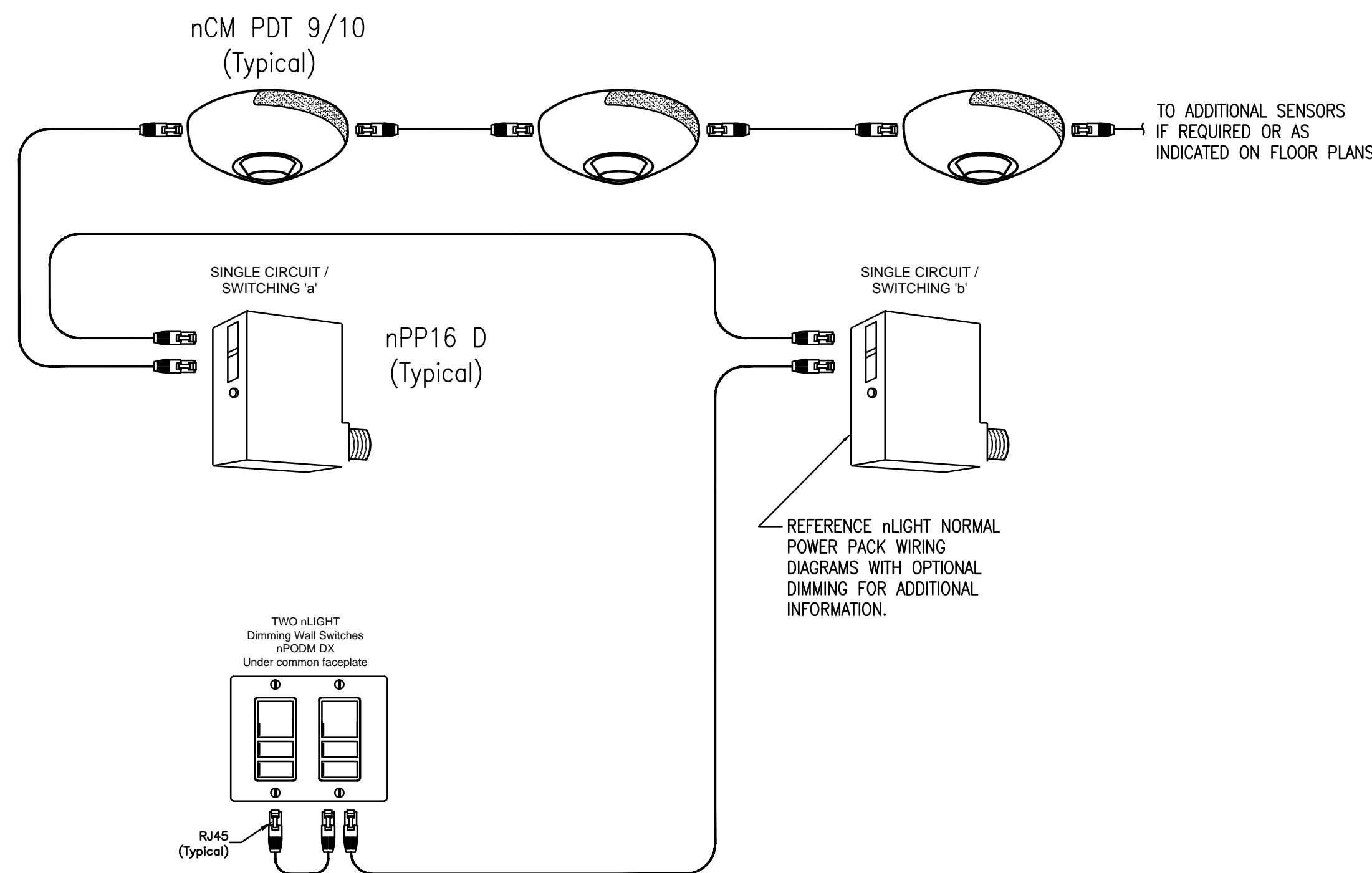
3 SINGLE ZONE CONTROLLER
WITH DIMMING CONTROL
NO SCALE



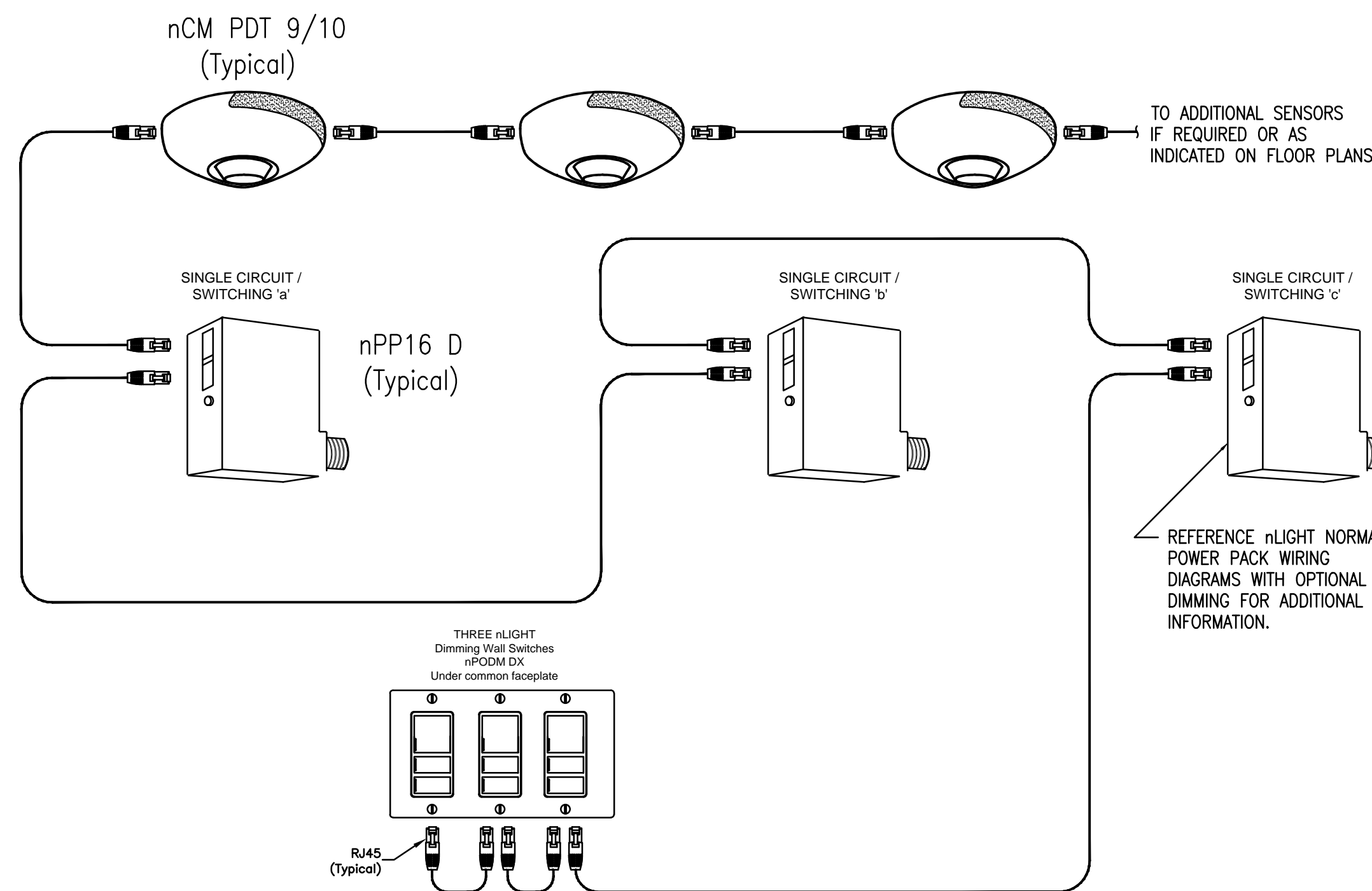
4 SINGLE ZONE CONTROLLER
WITH DIMMING CONTROL 2-ENTRY POINTS
NO SCALE



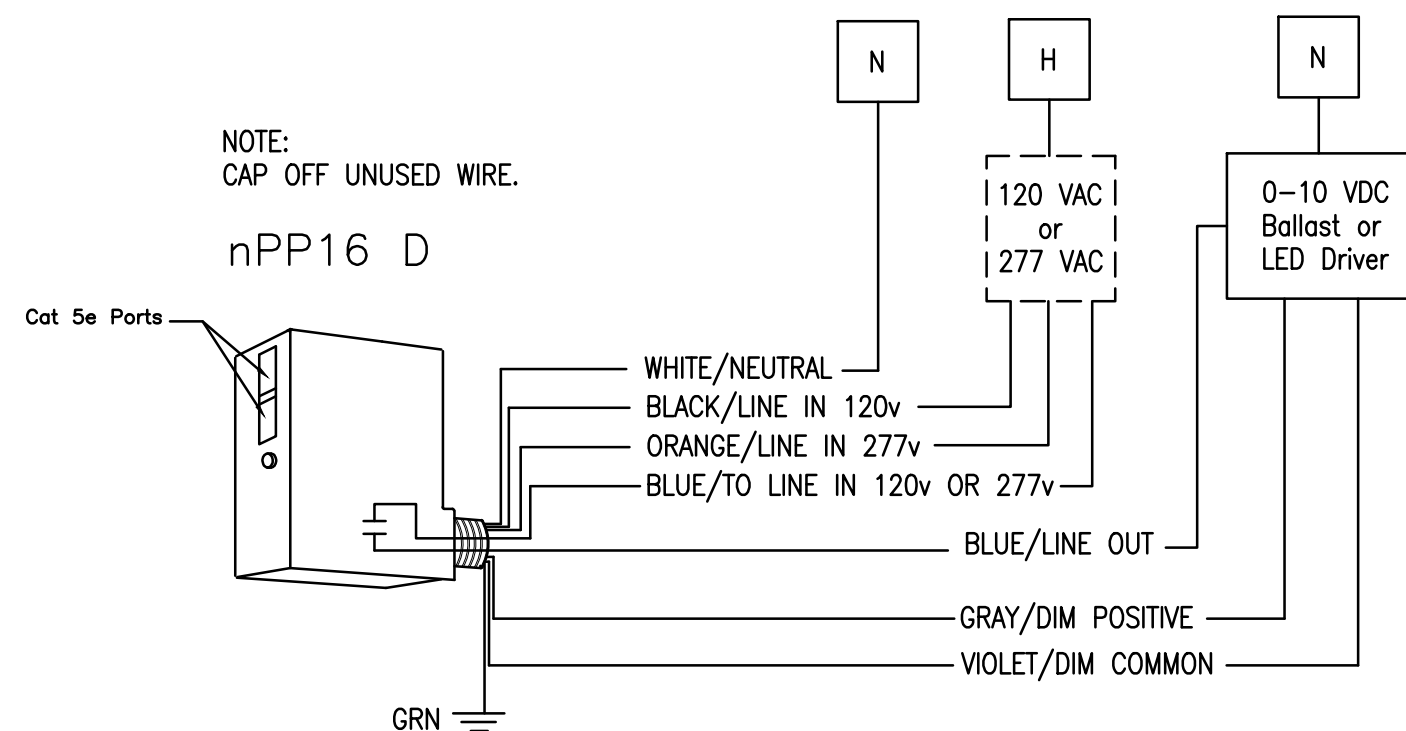
5 TWO ZONE CONTROLLER W/ DIMMER CONTROL
NO SCALE



6 THREE ZONE CONTROLLER W/ DIMMER CONTROL
NO SCALE



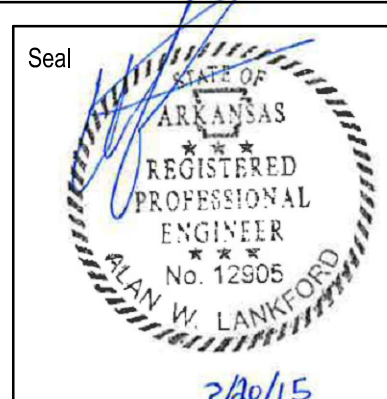
7 nLIGHT NORMAL POWER PACK
WIRING DIAGRAM WITH OPTIONAL DIMMING
NO SCALE



Revision	Date
100% For Construction	02.20.15

CONSULTANTS:

Lankford | Fendler
and Associates
1730 Walnut Street
Kansas City, MO
64108
816.221.1411



ARCHITECT / ENGINEER:

TOMPKINS
ARCHITECTS
507 Walnut Street, Suite 200, Kansas City, MO 64106
p. 816 472.5656 f. 816 472.5637 www.tom-arch.com

Drawing Title
ELECTRICAL & ROOM CONTROL
DETAILS

Approved: Project Director

Project Title
BUILDING 65
BUILDING DESIGN FOR LIGHTING
IMPROVEMENT

Location
V.A.M.C. NLR DIVISION

Date
February 20, 2015

Checked
GJF

Drawn
BCD

Project Number
VA101V-14C-0104

Building Number
65

Drawing Number
E401

CENTRAL
ARKANSAS VA
HEALTH CARE
SYSTEM

