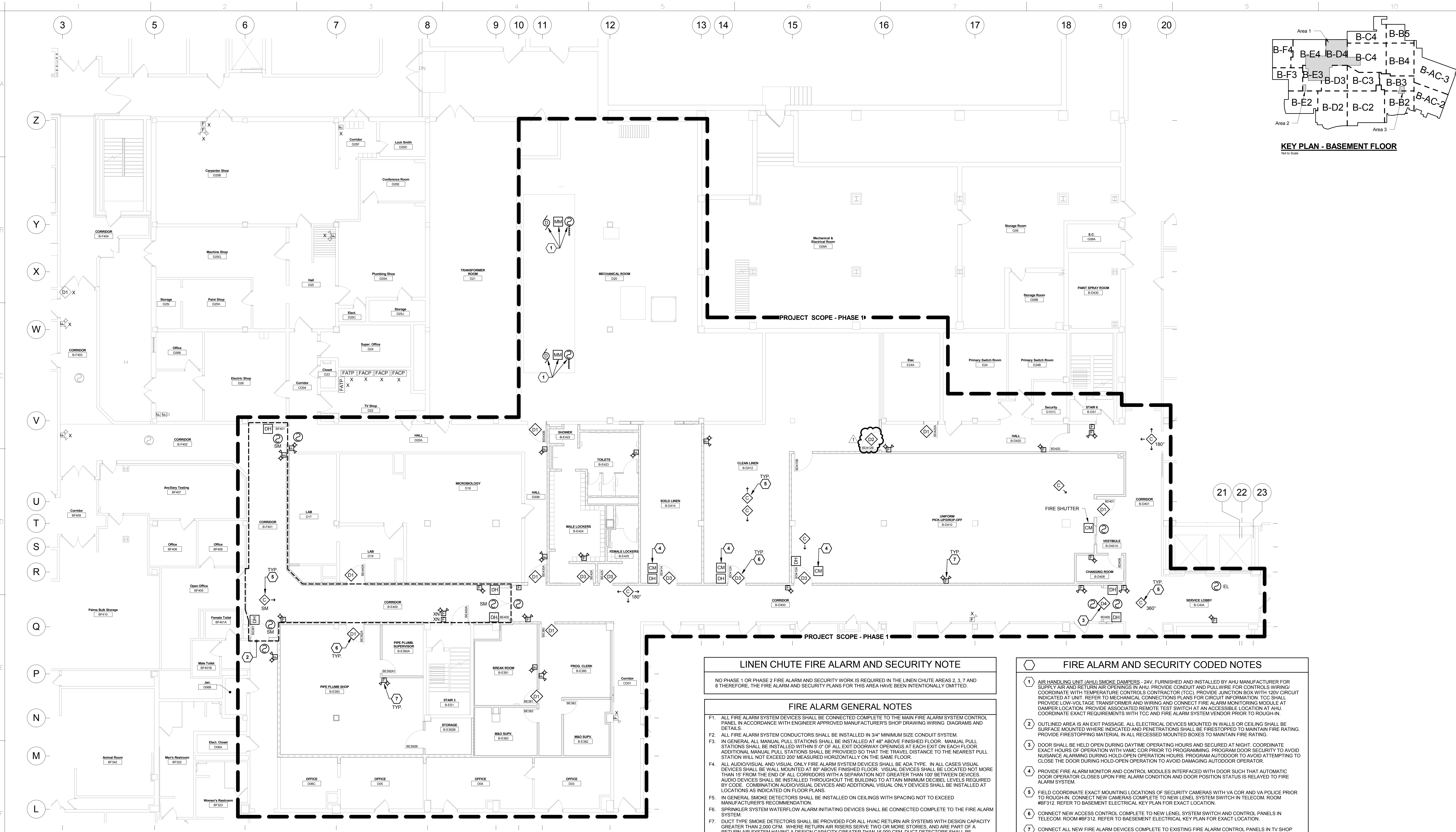


three inches = one foot
one and one half inch = one foot
one inch = one foot
three quarters inch = one foot
one half inch = one foot
one quarter inch = one foot
three eighths inch = one foot
one eighth inch = one foot



KEY PLAN - BASEMENT FLOOR
Not to Scale

PARTIAL BASEMENT FIRE ALARM AND SECURITY PLAN - AREA 1 - PHASE 1
1/8" = 1'-0"
0' 4' 8' 16' 32'

LINEN CHUTE FIRE ALARM AND SECURITY NOTE

NO PHASE 1 OR PHASE 2 FIRE ALARM AND SECURITY WORK IS REQUIRED IN THE LINEN CHUTE AREAS 2, 3, 7 AND 8 THEREFORE, THE FIRE ALARM AND SECURITY PLANS FOR THIS AREA HAVE BEEN INTENTIONALLY OMITTED.

FIRE ALARM GENERAL NOTES

F1. ALL FIRE ALARM SYSTEM DEVICES SHALL BE CONNECTED COMPLETE TO THE MAIN FIRE ALARM SYSTEM CONTROL PANEL IN ACCORDANCE WITH ENGINEER APPROVED MANUFACTURER'S SHOP DRAWING WIRING DIAGRAMS AND DETAILS.

F2. ALL FIRE ALARM SYSTEM CONDUCTORS SHALL BE INSTALLED IN 3/4" MINIMUM SIZE CONDUIT SYSTEM.

F3. IN GENERAL, ALL MANUAL PULL STATIONS SHALL BE INSTALLED AT 48" ABOVE FINISHED FLOOR. MANUAL PULL STATIONS SHALL BE INSTALLED WITHIN 5'-0" OF ALL EXIT DOORWAY OPENINGS AT EACH EXIT ON EACH FLOOR. ADDITIONAL MANUAL PULL STATIONS SHALL BE PROVIDED SO THAT THE TRAVEL DISTANCE TO THE NEAREST PULL STATION WILL NOT EXCEED 200' MEASURED HORIZONTALLY ON THE SAME FLOOR.

F4. ALL AUDIO/VISUAL AND VISUAL ONLY FIRE ALARM SYSTEM DEVICES SHALL BE ADA TYPE. IN ALL CASES VISUAL DEVICES SHALL BE WALL MOUNTED AT 80" ABOVE FINISHED FLOOR. VISUAL DEVICES SHALL BE LOCATED NOT MORE THAN 15' FROM THE END OF ALL CORRIDORS WITH A SEPARATION NOT GREATER THAN 100' BETWEEN DEVICES. AUDIO DEVICES SHALL BE INSTALLED THROUGHOUT THE BUILDING TO ATTAIN MINIMUM DECIBEL LEVELS REQUIRED BY CODE. COMBINATION AUDIO/VISUAL DEVICES AND ADDITIONAL VISUAL ONLY DEVICES SHALL BE INSTALLED AT LOCATIONS AS INDICATED ON FLOOR PLANS.

F5. IN GENERAL, SMOKE DETECTORS SHALL BE INSTALLED ON CEILINGS WITH SPACING NOT TO EXCEED MANUFACTURER'S RECOMMENDATION.

F6. SPRINKLER SYSTEM WATERFLOW ALARM INITIATING DEVICES SHALL BE CONNECTED COMPLETE TO THE FIRE ALARM SYSTEM.

F7. DUCT TYPE SMOKE DETECTORS SHALL BE PROVIDED FOR ALL HVAC RETURN AIR SYSTEMS WITH DESIGN CAPACITY GREATER THAN 2,000 CFM. WHERE RETURN AIR RISERS SERVE TWO OR MORE STORIES, AND ARE PART OF A RETURN AIR SYSTEM HAVING A DESIGN CAPACITY GREATER THAN 15,000 CFM, DUCT DETECTORS SHALL BE PROVIDED AT EACH STORY. COORDINATE EXACT DETECTOR LOCATIONS AND PROVISION OF ADEQUATE DUCT LENGTHS WITH THE MECHANICAL CONTRACTOR PRIOR TO ROUGH-IN.

F8. PROVIDE ALL FIRE ALARM SYSTEM COMPONENTS NECESSARY FOR SHUT DOWN OF HVAC EQUIPMENT BY THE FIRE ALARM SYSTEM WHERE SAME IS REQUIRED.

F9. PROVIDE ALL FIRE ALARM SYSTEM COMPONENTS NECESSARY FOR ELEVATOR CAPTURE BY THE FIRE ALARM SYSTEM WHERE SAME IS REQUIRED.

F10. SMOKE DETECTORS SHALL BE INSTALLED WITHIN 5'-0" OF CENTERLINE OF SMOKE DOORS ON HOLD-OPEN.

F11. SMOKE DETECTORS SHALL NOT BE LOCATED CLOSER THAN 3'-0" FROM AN AIR SUPPLY DIFFUSER.

F12. AUTOMATIC DOORS LOCATED ON A 2-HOUR FIRE RATED WALL SHALL HAVE A FIRE ALARM INTERFACE THAT INTERRUPTS 120V POWER FOR THE AUTOMATIC DOOR OPENER UNDER A FIRE ALARM CONDITION. PROVIDE (1) CONTROL MODULE FROM EACH BUILDING FIRE ALARM SYSTEM IF LOCATED ALONG THE BORDER OF TWO BUILDINGS.

F13. FIRE ALARM SYSTEM SHALL BE SUB-DIVIDED INTO ZONES THAT CORRESPOND TO THE SMOKE COMPARTMENTS AND SPRINKLER ZONES PER VA FIRE PROTECTION DESIGN MANUALS.

F14. REFER TO ARCHITECTURAL LIFE SAFETY FLOOR PLANS FOR LOCATION OF ALL RATED WALLS AND BARRIERS.

- FIRE ALARM AND SECURITY CODED NOTES**
- 1 AIR HANDLING UNIT (AHU) SMOKE DAMPERS - 24V, FURNISHED AND INSTALLED BY AHU MANUFACTURER FOR SUPPLY AIR AND RETURN AIR OPENINGS IN AHU. PROVIDE CONDUIT AND PULLWIRE FOR CONTROLS WIRING. COORDINATE WITH TEMPERATURE CONTROLS CONTRACTOR (TCC). PROVIDE JUNCTION BOX WITH 120V CIRCUIT INDICATED AT UNIT. REFER TO MECHANICAL CONNECTIONS PLANS FOR CIRCUIT INFORMATION. TCC SHALL PROVIDE LOW-VOLTAGE TRANSFORMER AND WIRING AND CONNECT FIRE ALARM MONITORING MODULE AT DAMPER LOCATION. PROVIDE ASSOCIATED REMOTE TEST SWITCH AT AN ACCESSIBLE LOCATION AT AHU. COORDINATE EXACT REQUIREMENTS WITH TCC AND FIRE ALARM SYSTEM VENDOR PRIOR TO ROUGH-IN.
 - 2 OUTLINED AREA IS AN EXIT PASSAGE. ALL ELECTRICAL DEVICES MOUNTED IN WALLS OR CEILING SHALL BE SURFACE MOUNTED WHERE INDICATED AND PENETRATIONS SHALL BE FIRESTOPPED TO MAINTAIN FIRE RATING. PROVIDE FIRESTOPPING MATERIAL IN ALL RECESSED MOUNTED BOXES TO MAINTAIN FIRE RATING.
 - 3 DOOR SHALL BE HELD OPEN DURING DAYTIME OPERATING HOURS AND SECURED AT NIGHT. COORDINATE EXACT HOURS OF OPERATION WITH VAMC COR PRIOR TO PROGRAMMING. PROGRAM AUTO-CLOSE TO AVOID NUISANCE ALARMING DURING HOLD-OPEN OPERATION HOURS. PROGRAM AUTOCLOSE TO AVOID DAMAGING AUTODOOR OPERATOR.
 - 4 PROVIDE FIRE ALARM MONITOR AND CONTROL MODULES INTERFACED WITH DOOR SUCH THAT AUTOMATIC DOOR OPERATOR CLOSURES UPON FIRE ALARM CONDITION AND DOOR POSITION STATUS IS RELAYED TO FIRE ALARM SYSTEM.
 - 5 FIELD COORDINATE EXACT MOUNTING LOCATIONS OF SECURITY CAMERAS WITH VA COR AND VA POLICE PRIOR TO ROUGH-IN. CONNECT NEW CAMERAS COMPLETE TO NEW LEVEL SYSTEM SWITCH IN TELECOM. ROOM #BF312. REFER TO BASEMENT ELECTRICAL KEY PLAN FOR EXACT LOCATION.
 - 6 CONNECT NEW ACCESS CONTROL COMPLETE TO NEW LEVEL SYSTEM SWITCH AND CONTROL PANELS IN TELECOM. ROOM #BF312. REFER TO BASEMENT ELECTRICAL KEY PLAN FOR EXACT LOCATION.
 - 7 CONNECT ALL NEW FIRE ALARM DEVICES COMPLETE TO EXISTING FIRE ALARM CONTROL PANELS IN TV SHOP #D22.

FINAL CONSTRUCTION DOCUMENTS SUBMISSION
FULLY SPRINKLERED

FINAL CONSTRUCTION DOCUMENTS SUBMISSION ADDENDUM #1 11/04/14 08/14/15	CONSULTANTS: FREDRICK, FREDRICK & HELLER ENGINEERS, INC. 672 EAST ROYALTON ROAD BROADVIEW HTS., OHIO 44147 TEL: (440) 546-9696 FAX: (440) 546-9699	ARCHITECT: 13212 Shaker Square Suite 204 Cleveland, Ohio 44120 P. 216.752.1800 F. 216.752.3833	Office of Facilities Management Department of Veterans Affairs
Revisions: Date	ARCHITECT: DESIGN AND CONSTRUCTION DOCUMENTS ARE PREPARED BY PERSPECTUS ARCHITECTURE, INC. THE USE OF THIS DESIGN AND THESE CONSTRUCTION DOCUMENTS FOR PURPOSES OTHER THAN THE SPECIFIC PROJECT NAMED HEREIN IS STRICTLY PROHIBITED WITHOUT THE EXPRESSED WRITTEN CONSENT OF PERSPECTUS ARCHITECTURE, INC. COPYRIGHT © 2014	Drawing Title PARTIAL BASEMENT FIRE ALARM AND SECURITY PLAN - PHASE 1 Approved:	Project Title ENHANCE MEDICAL, SPECIALTY CARE, AND ADMIN. SERVICES Location VAMC - WADE PARK Date 11/04/2014 Checked MPL Drawn CPC
	Project Number 541-15-101 Building Number 1 Drawing Number 1-E5.1 Dwg. of		