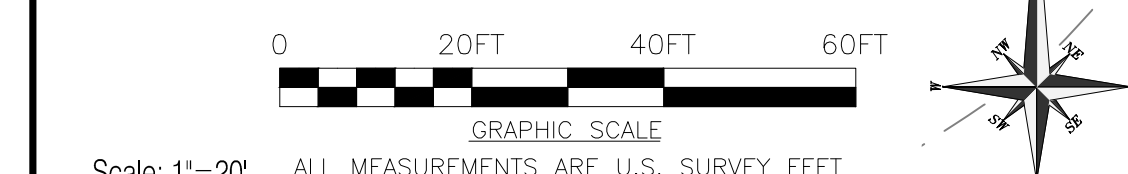


LEGEND

- LIMIT OF DISTURBANCE  
— 428 PROPOSED CONTOUR  
— EXISTING CONTOUR  
FG ###.## FG = FINISH GRADE  
BC ###.## BC = GRADE AT BOTTOM OF CRYPT. SEE: (2 L-6.0)  
+32.40 SPOT GRADE  
3'X8' PRE-CAST STANDARD LAWN CRYPTS  
SM 4 BURIAL SECTION MARKER CONFIRM LOCATION WITH CO/COR  
SM 4 EXISTING BURIAL SECTION MARKER TO REMAIN

CONTROL POINT NOTES:

1. SEE B-1.0 FOR ALL SITE CONTROL POINTS



CONSULTANTS:		LANDSCAPE ARCHITECT:		Drawing Title		Project Title		Project Number		NATIONAL CEMETERY	
 ENGINEERS PLANNERS SCIENTISTS CONSTRUCTION MANAGERS 936 RIDGEBROOK ROAD SPRINGFIELD, MD 21152 PHONE: (410) 316-7800 FAX: (410) 316-7868 WWW.KCI.COM		 101 Bellevue Road Pittsburgh, PA 15229 (412) 931-6455		GRADING PLAN		Culpeper National Cemetery Pre Placed Crypt Conversions At Section 4		839-CM3-027		ADMINISTRATION	
Revisions:		Date		Approved: Project Director		Location East Chandler Street, Culpeper, VA 22701		Building Number -		OFFICE OF DESIGN	
						Date JULY 20, 2015		Drawing Number L-3.0		AND CONSTRUCTION	
						Checked MM/MD		Dwg. 10 of 23			
						Drawn AW/SZ					



	4"-10" DIA SOLID WALL PVC/HDPE COLLECTOR PIPE WITH SLOPE AND ARROW INDICATING FLOW DIRECTION
	4"-8" DIA PERFORATED PVC SUBDRAINAGE PIPE WITH SLOPE AND ARROW INDICATING FLOW DIRECTION (WRAPPED IN GEOTEXTILE FABRIC)
	CLEAN-OUT
	MANHOLE

OWNER: EASTFORD  
LLC FT/41  
TAX # PERFORATED PVC  
SDR-21 (TYP.)  
ZONING: R2  
BK 236 PG 22

EXISTING PROPERTY LINE —

— CLEANOUT (TYP.)

KCI CONTROL  
POINT #3 SET  
REBAR W/CAP  
N: 6853640.60  
E: 11628388.81  
ELEV: 433.15



**Aqua Engineering Inc.**  
Innovative Water Solutions

375 E. Horsetooth Road, Building 2-202  
Fort Collins, CO 80525-3196  
970.229.9668 office  
970.226.3855 fax  
[www.aquaengineering.com](http://www.aquaengineering.com)

 **M·T·R**  
LANDSCAPE ARCHITECTS  
101 Bellevue Road Pittsburgh, PA 15229 (412) 931-6455

USE TECHNIQUES OF CREATING OR DRILLING A BOREHOLE ALONG A  
 PREDETERMINED PATH TO A SPECIFIED TARGET LOCATION AND ELEVATION.  
 USE MECHANICAL AND HYDRAULIC DEVIATION EQUIPMENT TO CHANGE THE  
 BORING COURSE AND CONTROL ELEVATION. USE INSTRUMENTATION TO  
 MONITOR THE LOCATION AND ORIENTATION OF THE BORING HEAD ASSEMBLY  
 ALONG A PREDETERMINED COURSE. CONTRACTOR SHALL TEST PIT AS  
 REQUIRED TO VERIFY THAT THE DESIGN SLOPES ARE ACHIEVED IN THE FIELD.

Approved: Project Director

Location  
East Chandler Street, Culpeper, VA 22701

Drawn  
JMS

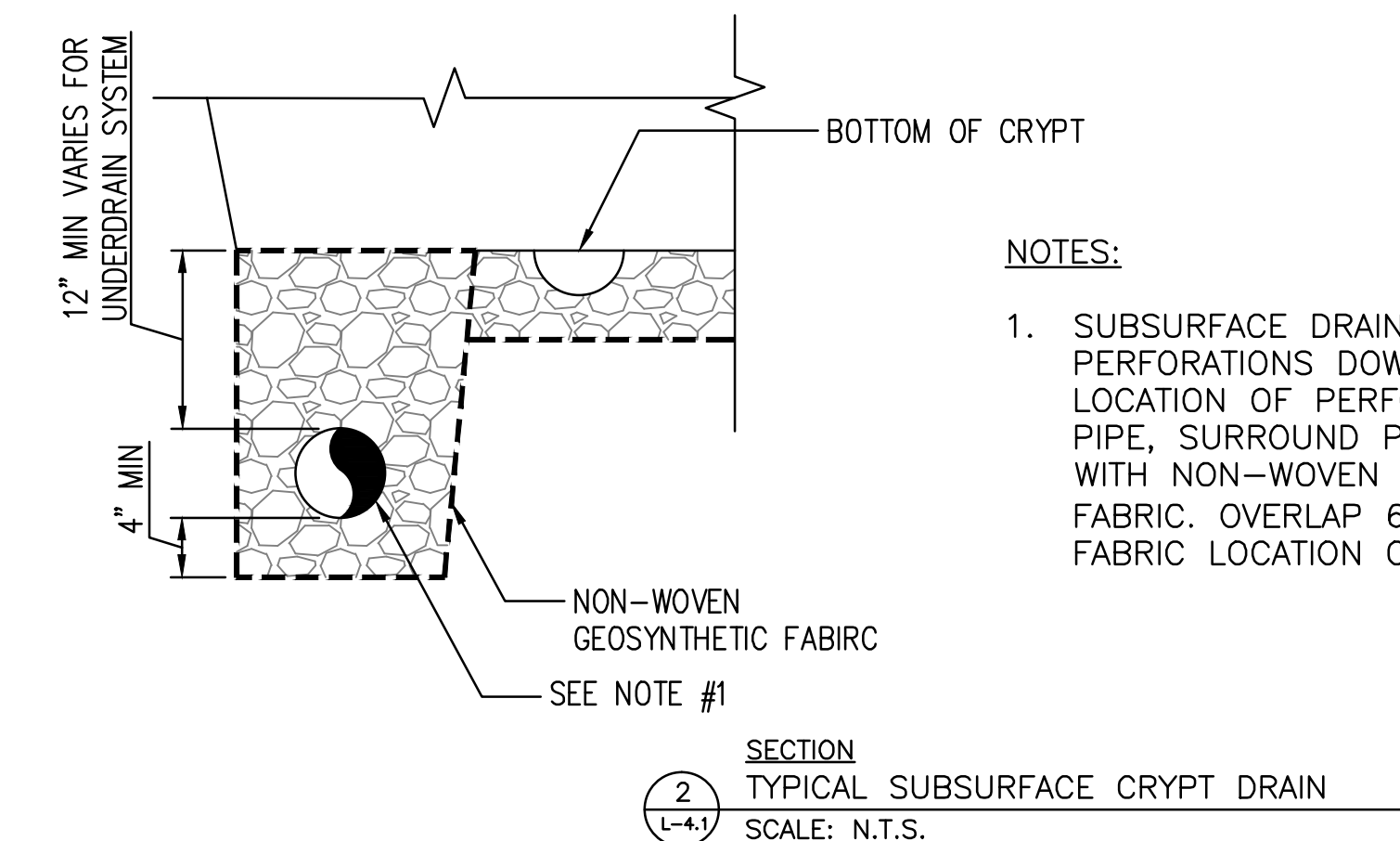
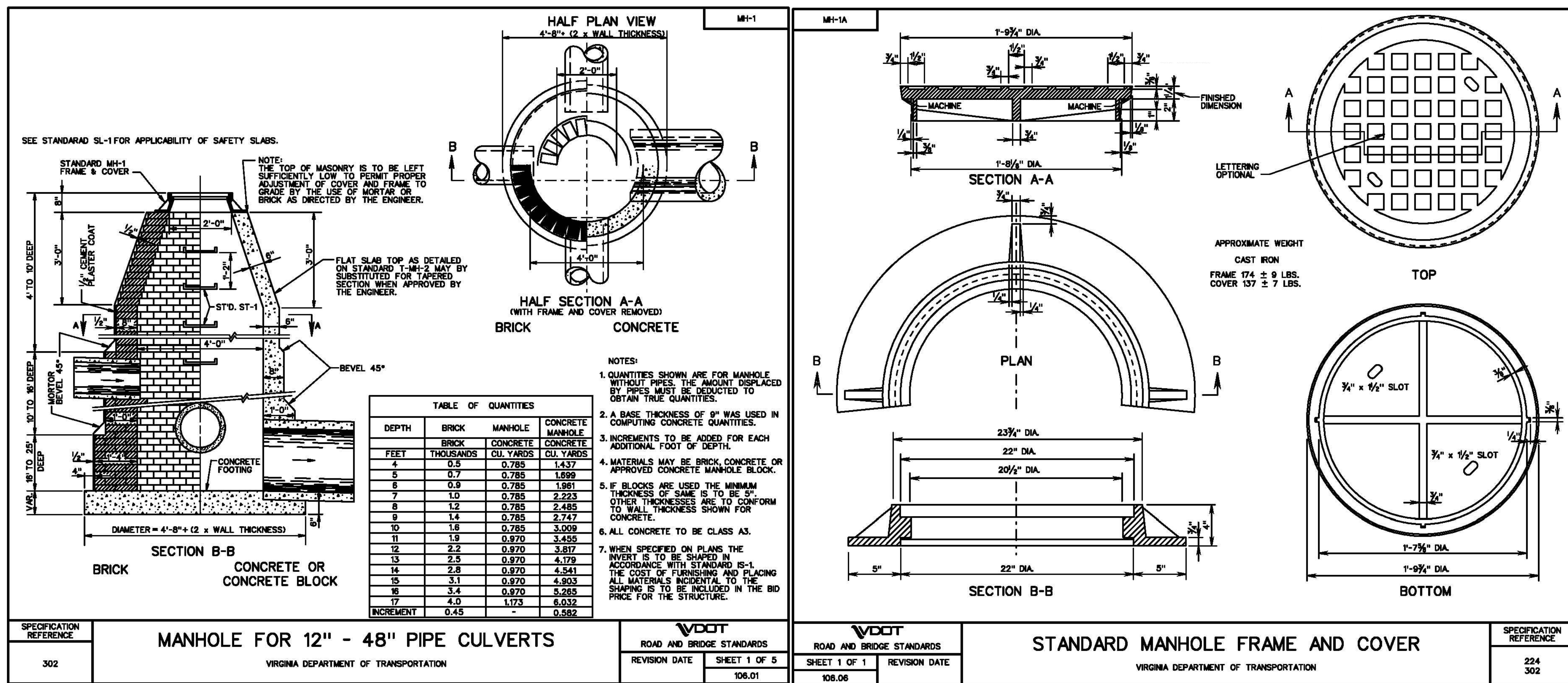
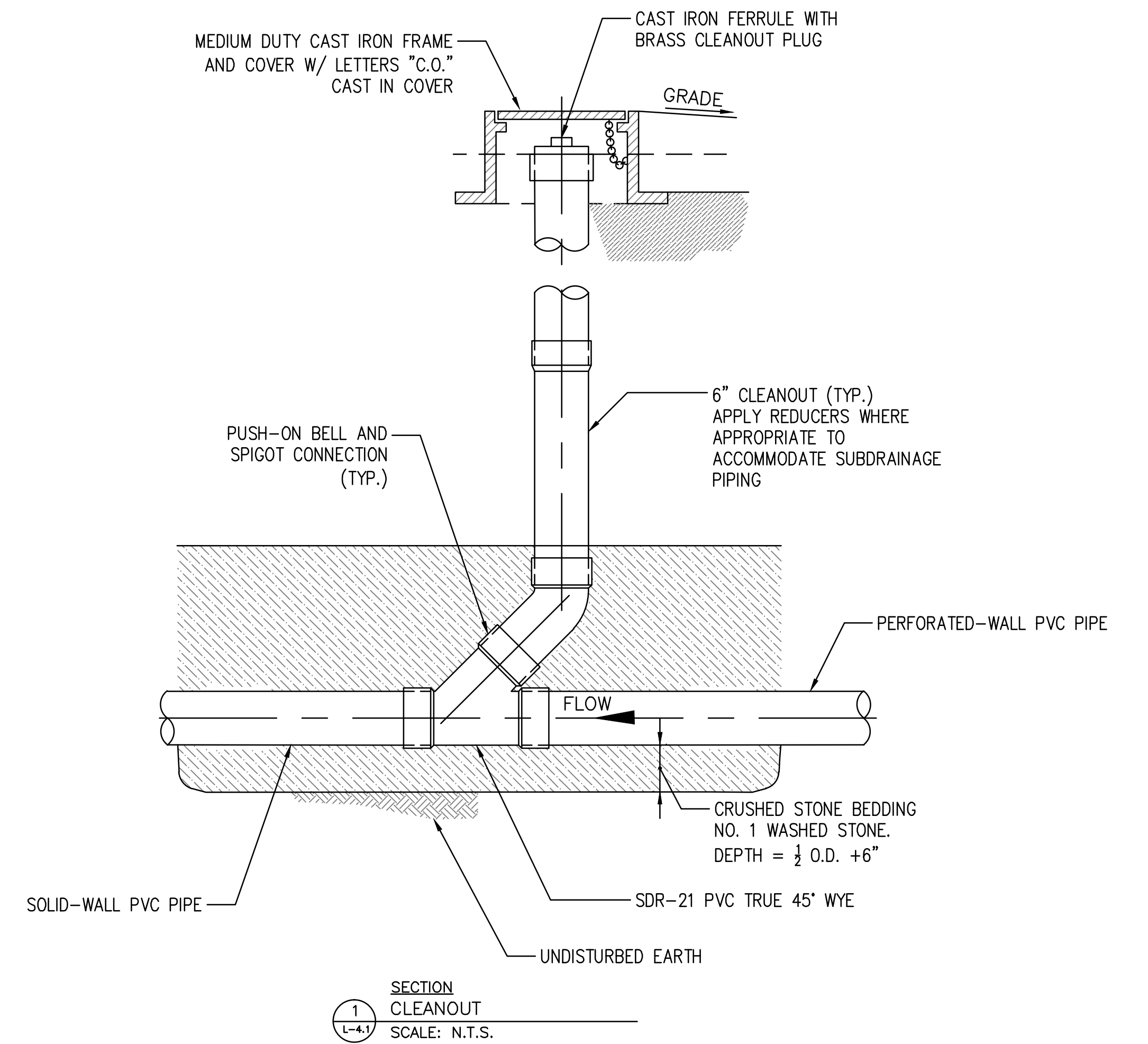
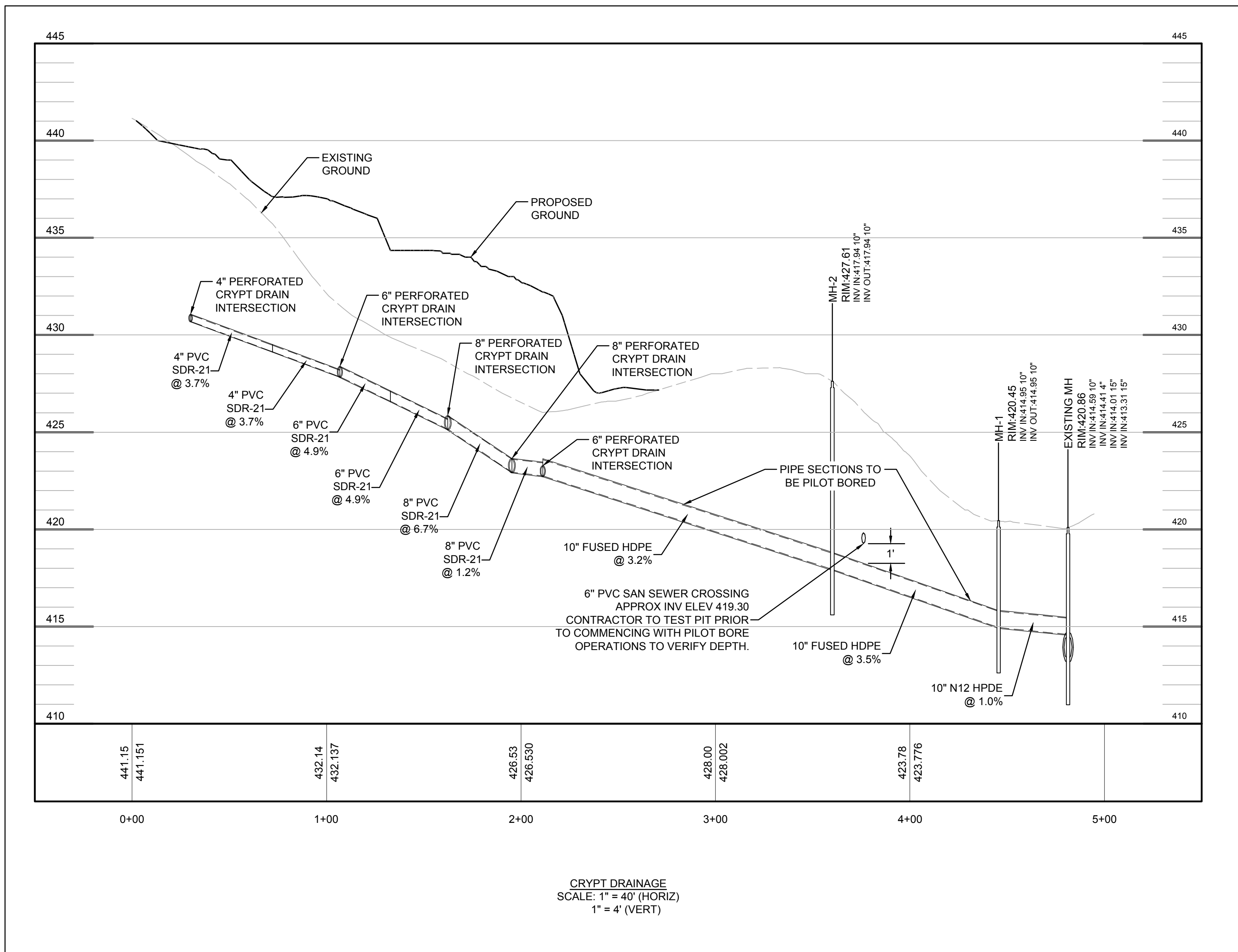
Drawing Number

9



Department of  
Veterans Affairs





BID SET - FOR CONSTRUCTION

CONSULTANTS:		LANDSCAPE ARCHITECT:		Drawing Title		Project Title		Project Number		NATIONAL CEMETERY	
				CRYPT DRAINAGE DETAILS		Culpeper National Cemetery Pre Placed Crypt Conversions At Section 4		839-CM3-027		ADMINISTRATION	
				Approved: Project Director		Location East Chandler Street, Culpeper, VA 22701		Building Number -		OFFICE OF DESIGN	
						Date JULY 20, 2015		Checked BCM		DRAWING NUMBER	
								Drawn JMS		L-4.1	
										Dwg. 12 of 23	
										Department of Veterans Affairs	