

VA LITTLE ROCK

GENERAL OR, CVOR, ORTHO #1,2, NEURO
DATE: 15 JAN 15

DIRECTORY

SALES REP: TADD FARMER 501.425.9490
TADD.FARMER@STRYKER.COM

PROJECT MANAGER: CHRIS OUHRABKA 972.768.6876
CHRIS.OUHRABKA@STRYKER.COM

FIELD ENGINEER: ASA KLEIN 469.766.0891
ASA.KLEIN@STRYKER.COM

TABLE OF CONTENTS

ROOM LAYOUTS 2 - 6
BOOM & LIGHT ELEVATIONS 7 - 15
PRE-INSTALLATION NOTES 16 - 18

I AM IN AGREEMENT WITH THE PLACEMENT OF ALL EQUIPMENT AND UNDERSTAND ALL
PRE-INSTALLATION REQUIREMENTS PROVIDED BY STRYKER COMMUNICATIONS.
I HEREBY APPROVE THIS COMPLETE SET OF DRAWINGS.

AUTHORIZED SIGNATURE:

TITLE:

DATE:

APPROVED REVISION: 3A

DISCLAIMER: THIS DOCUMENT CONTAINS CONFIDENTIAL AND PROPRIETARY
INFORMATION OF STRYKER. NEITHER THIS DOCUMENT NOR THE
INFORMATION HEREIN MAY BE REPRODUCED, USED, OR DISCLOSED TO OR
FOR THE BENEFIT OF ANY THIRD PARTY WITHOUT THE PRIOR WRITTEN
CONSENT OF STRYKER.

FIELD ENGINEERING APPROVAL

FIELD ENGINEER SIGNATURE:

1410 LAKE SIDE PARKWAY, SUITE 100
FLOWER MOUND, TX 75028
PHONE: (877) 789-8106
E-FAX: (408) 754-2995
www.stryker.com

stryker®

REP: TADD FARMER
PM: CHRIS OUHRABKA

SHEET:

01

29

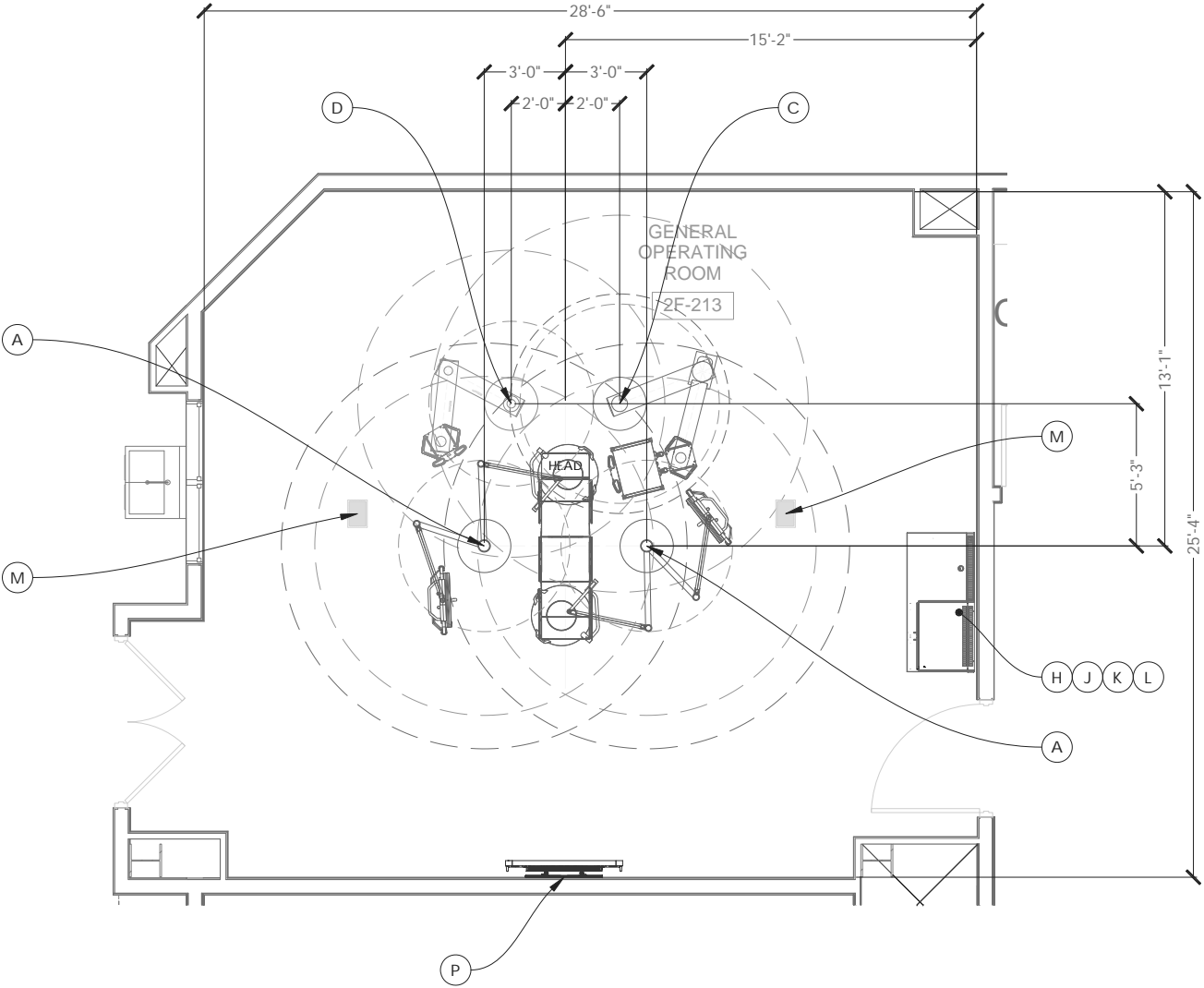
AUTOCAD DRAWING TEMPLATE | TEM10071 | REV. A

AUTOCAD TITLEBLOCK TEMPLATE | TEM10072 | REV. A

NOTES: (UNLESS OTHERWISE SPECIFIED)

EQUIPMENT SCHEDULE		
KEY ITEM	NAME	QTY
A	VISUM LED SURGICAL LIGHT & FLAT PANEL ARM	2
C	EQUIPMENT BOOM (1000/1000)	1
D	ANESTHESIA BOOM (800/800)	1
H	ONE-BAY DOCUMENTATION STATION #678003035 - 22" TOUCH PANEL, SDC3, PRINTER, PC - MP3 AUDIO DEVICE	1
J	SWITCHPOINT INFINITY 3	1
K	VISUM LED LIGHT POWER SUPPLY	1
L	VISUM LED LIGHT & CAMERA WALL CONTROL PANEL	1
M	FLUSH MOUNTED RECTANGULAR CEILING SPEAKER	2
P	WALL MOUNTED 55" LCD MONITOR	1

CONDUIT SCHEDULE		
CONDUIT RUN ITEM - ITEM	CONDUIT QTY	CONDUIT SIZE
A - J	1	1 3/4"
A - K	1	2"
C - J	2	2"
D - J	1	2"
L - K	1	2 1/2"
M - J	1	3/4"
P - J	1	1 3/4"



SCALE: 1/2" = 1'

AUTOCAD DRAWING TEMPLATE | TEM10071 | REV. A

AUTOCAD TITLEBLOCK TEMPLATE | TEM10072 | REV. A

stryker

1410 LAKESIDE PARKWAY, SUITE 100
FLOWER MOUND, TEXAS 75028
PHONE: (877) 789-8106
FAX: (972) 410-7001
www.stryker.com

REV.	DATE	PROPOSAL #	DRAWING	IR
3A	15 JAN 15	REFERENCE CSR# 28977	E. MONTGOMERY	N/A

DISCLAIMER
THIS DOCUMENT CONTAINS CONFIDENTIAL AND PROPRIETARY INFORMATION OF STRYKER. NEITHER THIS DOCUMENT NOR THE INFORMATION HEREIN MAY BE REPRODUCED, USED, OR DISCLOSED TO OR FOR THE BENEFIT OF ANY THIRD PARTY WITHOUT THE PRIOR WRITTEN CONSENT OF STRYKER.

EQUIPMENT LAYOUT
GENERAL OR
VA LITTLE ROCK

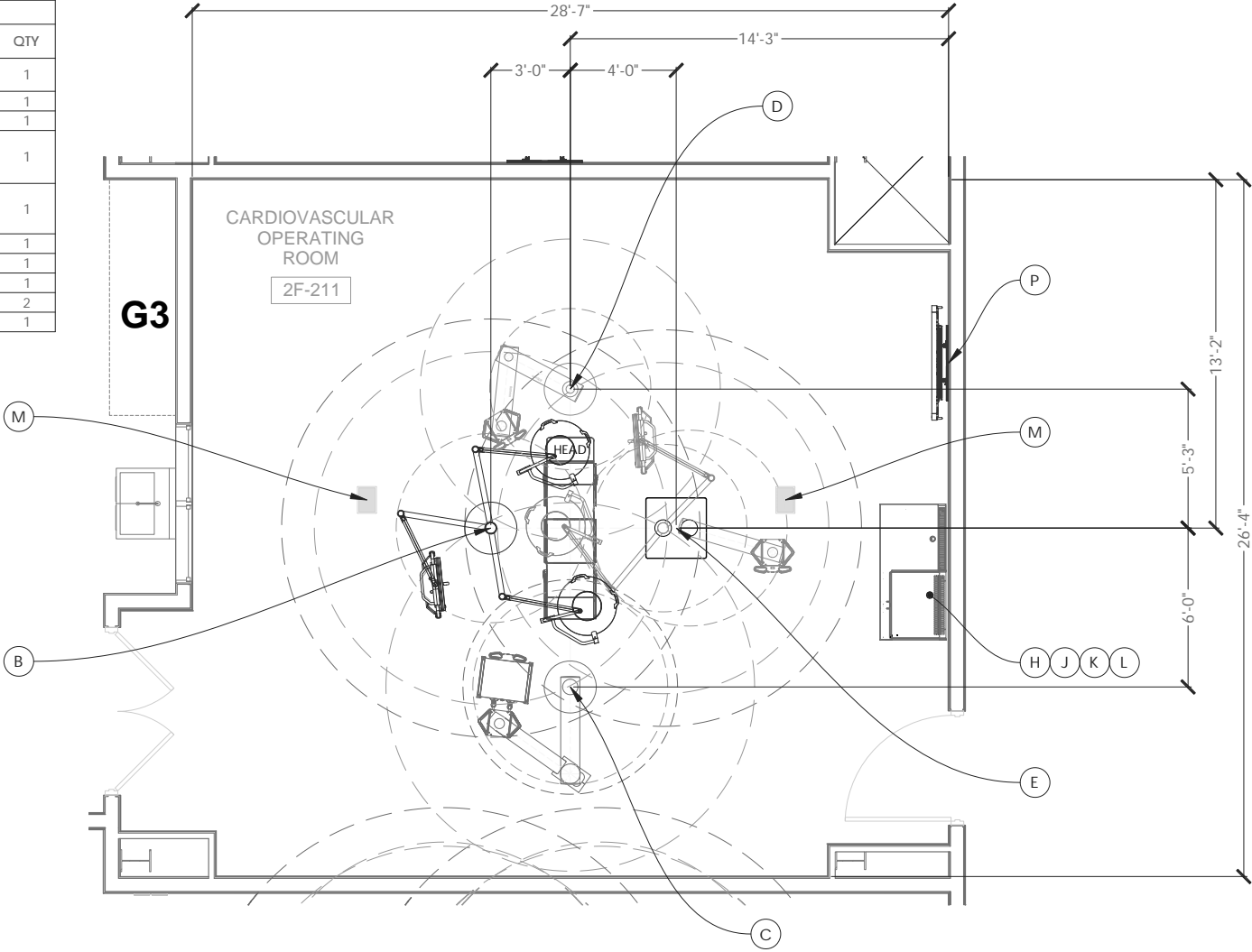
REP: TADD FARMER
PM: CHRIS OUHRABKA

SHEET:
02 / 29

NOTES: (UNLESS OTHERWISE SPECIFIED)

EQUIPMENT SCHEDULE		
KEY ITEM	NAME	QTY
B	VISUM LED DUAL SURGICAL LIGHT & FLAT PANEL ARM	1
C	EQUIPMENT BOOM (1000/1000)	1
D	ANESTHESIA BOOM (800/800)	1
E	TANDEM: - VISUM LED SURGICAL LIGHT & FLAT PANEL ARM - PERFUSION BOOM (1000)	1
H	ONE-BAY DOCUMENTATION STATION #678003035 - 22" TOUCH PANEL, SDC3, PRINTER, PC - MP3 AUDIO DEVICE	1
J	SWITCHPOINT INFINITY 3	1
K	VISUM LED LIGHT POWER SUPPLY	1
L	VISUM LED LIGHT & CAMERA WALL CONTROL PANEL	1
M	FLUSH MOUNTED RECTANGULAR CEILING SPEAKER	2
P	WALL MOUNTED 55" LCD MONITOR	1

CONDUIT SCHEDULE		
CONDUIT RUN ITEM - ITEM	CONDUIT QTY	CONDUIT SIZE
B - J	1	1 1/4"
B - K	1	2"
C - J	2	2"
D - J	1	2"
E - J	1	1 1/4"
E - K	1	2"
E - J	2	2"
L - K	1	3/4"
M - J	1	1 1/2"
P - J	1	1 1/4"



stryker

1410 LAKESIDE PARKWAY, SUITE 100
FLOWER MOUND, TEXAS 75028
PHONE: (877) 789-8106
FAX: (972) 410-7001
www.stryker.com

REV.	DATE	PROPOSAL #	IR	DRAFTER	IR
3A	15 JAN 15	REFERENCE CSR# 28977	E. MONTGOMERY	N/A	N/A

DISCLAIMER
THIS DOCUMENT CONTAINS CONFIDENTIAL AND PROPRIETARY INFORMATION OF STRYKER. NEITHER THIS DOCUMENT NOR THE INFORMATION HEREIN MAY BE REPRODUCED, USED, OR DISCLOSED TO OR FOR THE BENEFIT OF ANY THIRD PARTY WITHOUT THE PRIOR WRITTEN CONSENT OF STRYKER.

EQUIPMENT LAYOUT
CVOR ROOM
VA LITTLE ROCK

REP: TADD FARMER
PM: CHRIS OUHRABKA

SHEET:
03 / 29

SCALE: 1/2" = 1'

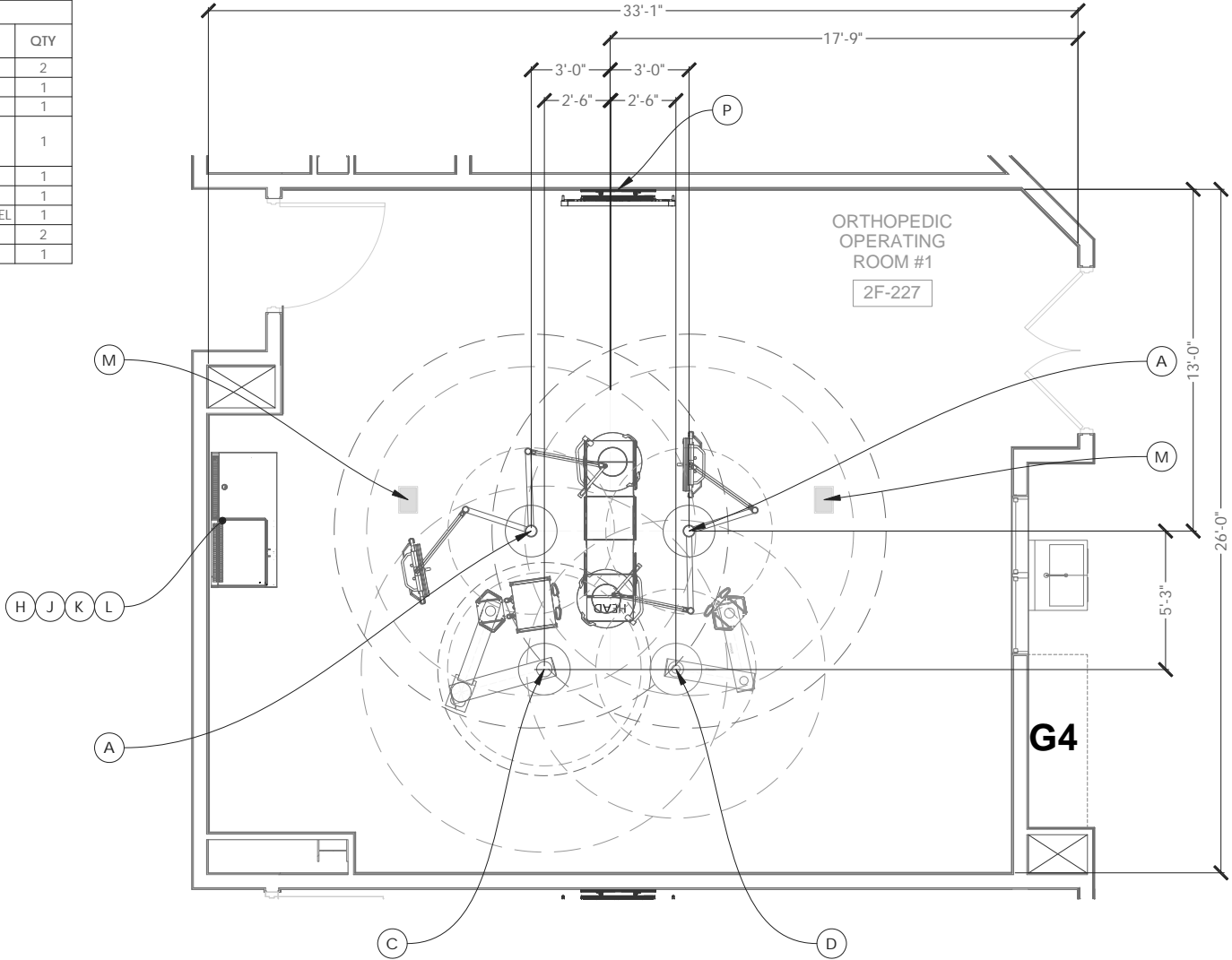
AUTOCAD DRAWING TEMPLATE | TEM10071 | REV. A

AUTOCAD TITLEBLOCK TEMPLATE | TEM10072 | REV. A

NOTES: (UNLESS OTHERWISE SPECIFIED)

EQUIPMENT SCHEDULE		
KEY ITEM	NAME	QTY
A	VISUM LED SURGICAL LIGHT & FLAT PANEL ARM	2
C	EQUIPMENT BOOM (1000/1000)	1
D	ANESTHESIA BOOM (800/800)	1
H	ONE-BAY DOCUMENTATION STATION #678003035 - 22" TOUCH PANEL, SDC3, PRINTER, PC - MP3 AUDIO DEVICE	1
J	SWITCHPOINT INFINITY 3	1
K	VISUM LED LIGHT POWER SUPPLY	1
L	VISUM LED LIGHT & CAMERA WALL CONTROL PANEL	1
M	FLUSH MOUNTED RECTANGULAR CEILING SPEAKER	2
P	WALL MOUNTED 55" LCD MONITOR	1

CONDUIT SCHEDULE		
CONDUIT RUN ITEM - ITEM	CONDUIT QTY	CONDUIT SIZE
A - J	1	1 3/4"
A - K	1	2"
C - J	2	2"
D - J	1	2"
L - K	1	2 1/2"
M - J	1	3/4"
P - J	1	1 3/4"



SCALE: 1/2" = 1'

AUTOCAD DRAWING TEMPLATE | TEM10071 | REV. A

AUTOCAD TITLEBLOCK TEMPLATE | TEM10072 | REV. A

stryker

1410 LAKESIDE PARKWAY, SUITE 100
FLOWER MOUND, TEXAS 75028
PHONE: (877) 789-8106
FAX: (972) 410-7001
www.stryker.com

REV.	DATE	PROPOSAL #	IR	DRAFTER
3A	15 JAN 15	REFERENCE CSR#: 28977	IR	E. MONTGOMERY

DISCLAIMER
THIS DOCUMENT CONTAINS CONFIDENTIAL AND PROPRIETARY INFORMATION OF STRYKER. NEITHER THIS DOCUMENT NOR THE INFORMATION HEREIN MAY BE REPRODUCED, USED, OR DISCLOSED TO OR FOR THE BENEFIT OF ANY THIRD PARTY WITHOUT THE PRIOR WRITTEN CONSENT OF STRYKER.

EQUIPMENT LAYOUT
ORTHO OR #1
VA LITTLE ROCK

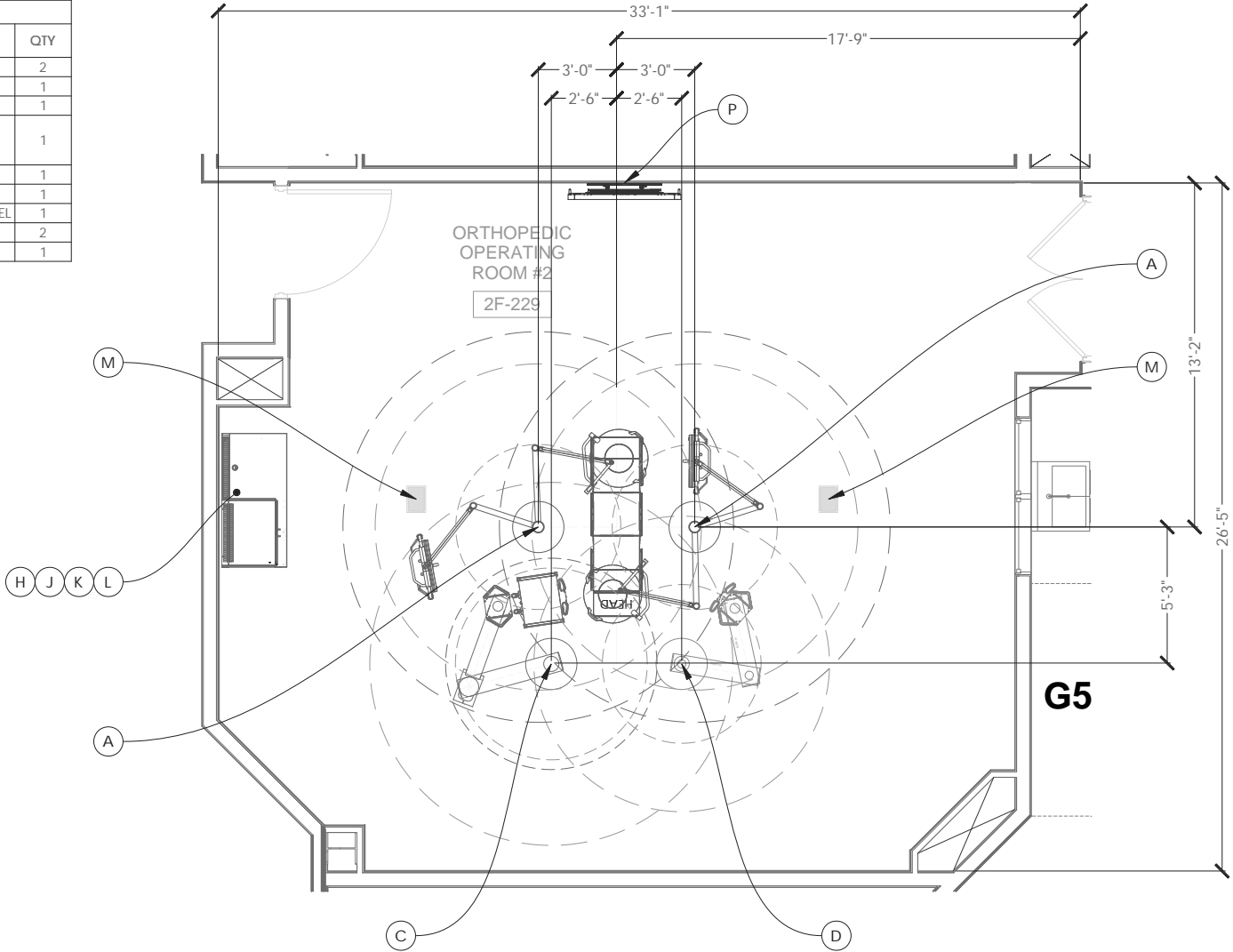
REP: TADD FARMER
PM: CHRIS OUHRABKA

SHEET:
04 / 29

NOTES: (UNLESS OTHERWISE SPECIFIED)

EQUIPMENT SCHEDULE		
KEY ITEM	NAME	QTY
A	VISUM LED SURGICAL LIGHT & FLAT PANEL ARM	2
C	EQUIPMENT BOOM (1000/1000)	1
D	ANESTHESIA BOOM (800/800)	1
H	ONE-BAY DOCUMENTATION STATION #678003035 - 22" TOUCH PANEL, SDC3, PRINTER, PC - MP3 AUDIO DEVICE	1
J	SWITCHPOINT INFINITY 3	1
K	VISUM LED LIGHT POWER SUPPLY	1
L	VISUM LED LIGHT & CAMERA WALL CONTROL PANEL	1
M	FLUSH MOUNTED RECTANGULAR CEILING SPEAKER	2
P	WALL MOUNTED 55" LCD MONITOR	1

CONDUIT SCHEDULE		
CONDUIT RUN ITEM - ITEM	CONDUIT QTY	CONDUIT SIZE
A - J	1	1 3/4"
A - K	1	2"
C - J	2	2"
D - J	1	2"
L - K	1	2 1/2"
M - J	1	3/4"
P - J	1	1 3/4"



SCALE: 1/2" = 1'

AUTOCAD DRAWING TEMPLATE | TEM10071 | REV. A

AUTOCAD TITLEBLOCK TEMPLATE | TEM10072 | REV. A

stryker

1410 LAKESIDE PARKWAY, SUITE 100
FLOWER MOUND, TEXAS 75028
PHONE: (877) 789-8106
FAX: (972) 410-7001
www.stryker.com

REV.	DATE	PROPOSAL #	IR
3A	15 JAN 15	REFERENCE CSR#: 28977	E. MONTGOMERY

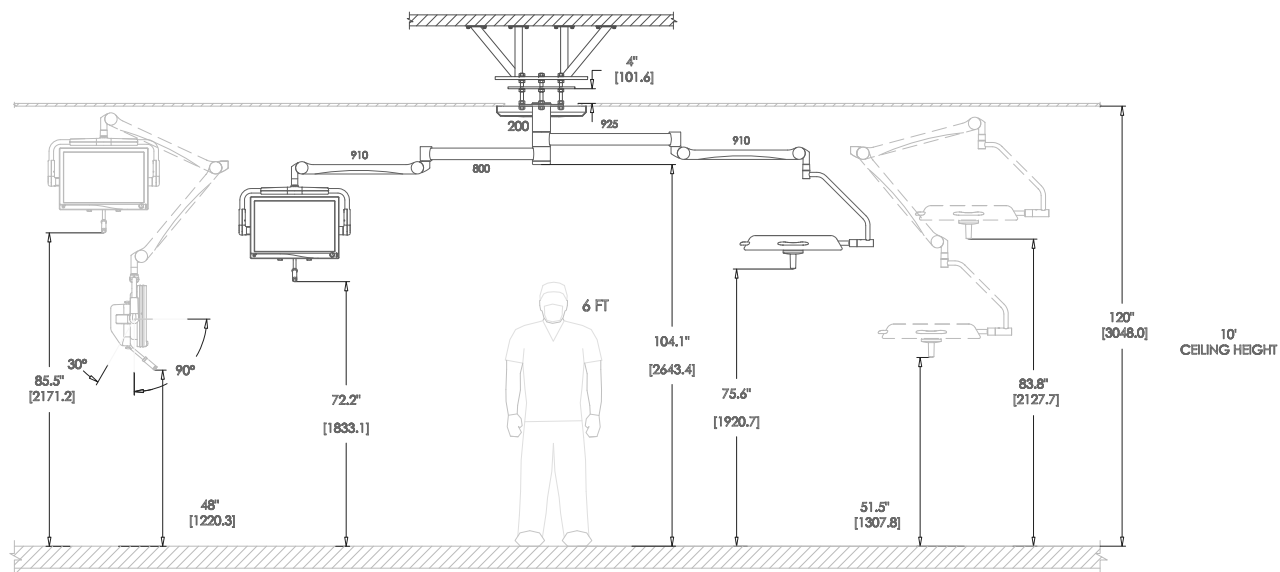
DISCLAIMER
THIS DOCUMENT CONTAINS CONFIDENTIAL AND PROPRIETARY INFORMATION OF STRYKER. NEITHER THIS DOCUMENT NOR THE INFORMATION HEREIN MAY BE REPRODUCED, USED, OR DISCLOSED TO OR FOR THE BENEFIT OF ANY THIRD PARTY WITHOUT THE PRIOR WRITTEN CONSENT OF STRYKER.

EQUIPMENT LAYOUT
ORTHO OR #2
VA LITTLE ROCK

REP: TADD FARMER
PM: CHRIS OUHRABKA

SHEET:
05 / 29

CEILING HEIGHT: 10'-0"



AUTOCAD DRAWING TEMPLATE | TEM10071 | REV. A

AUTOCAD TITLEBLOCK TEMPLATE | TEM10072 | REV. A

1410 LAKESIDE PARKWAY, SUITE 100
FLOWER MOUND, TEXAS 75028
PHONE: (877) 789-8106
FAX: (972) 410-7001
www.stryker.com

REV:	DATE:	PROPOSA #:	DRAFTER	IR
3A	15 JAN 15	REFERENCE CSR#: 23927	E. MONTGOMERY	N/A

DISCLAIMER

THIS DOCUMENT CONTAINS CONFIDENTIAL AND PROPRIETARY INFORMATION OF SYRTEX. NEITHER THIS DOCUMENT NOR THE INFORMATION HEREIN MAY BE REPRODUCED, USED, OR DISCLOSED TO OR FOR THE BENEFIT OF ANY THIRD PARTY WITHOUT THE PRIOR WRITTEN CONSENT OF SYRTEX.

EQUIPMENT ELEVATION
VISUM LED SURGICAL LIGHT &
FLAT PANEL ARM - (A)
GENERAL OR, CVOR, ORTHO ROOM
VA LITTLE ROCK

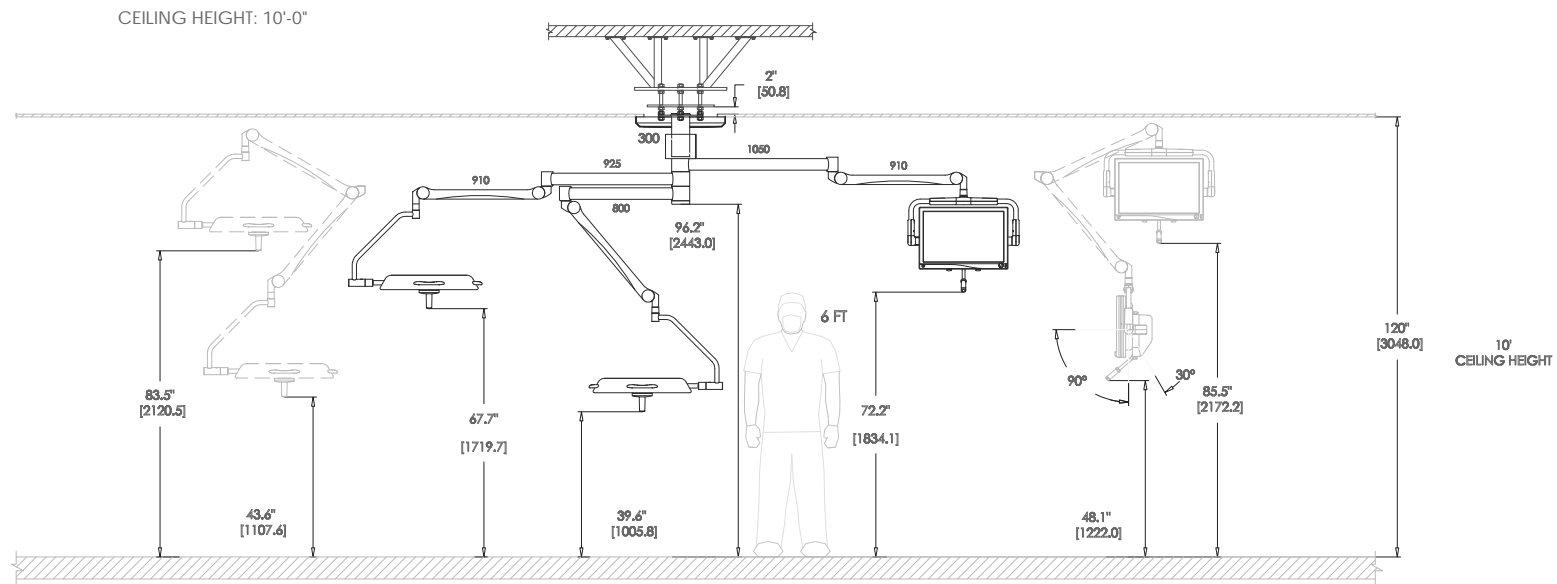
REP: TADD FARMER
PM: CHRIS OUHRABKA

SHEET:

07

29

POWER REQUIREMENTS: SEE STRYKER PRE-INSTALLATION MANUAL.



SCALE: 3/4" = 1'

AUTOCAD DRAWING TEMPLATE | TEM10071 | REV. A

AUTOCAD TITLEBLOCK TEMPLATE | TEM10072 | REV. A

stryker

1410 LANESIDE PARKWAY, SUITE 100
FLOWER MOUND, TEXAS 75028
PHONE: (877) 789-8106
FAX: (972) 410-7001
www.stryker.com

REV.	DATE	PROPOSAL #	FIELDING	DRAFTER	IR
3A	15 JAN 15	REFERENCE CSR#	23927	E. MONTGOMERY	N/A

DISCLAIMER
THIS DOCUMENT CONTAINS CONFIDENTIAL AND PROPRIETARY INFORMATION OF STRYKER. NEITHER THIS DOCUMENT NOR THE INFORMATION HEREIN MAY BE REPRODUCED, USED, OR DISCLOSED TO OR FOR THE BENEFIT OF ANY THIRD PARTY WITHOUT THE PRIOR WRITTEN CONSENT OF STRYKER.

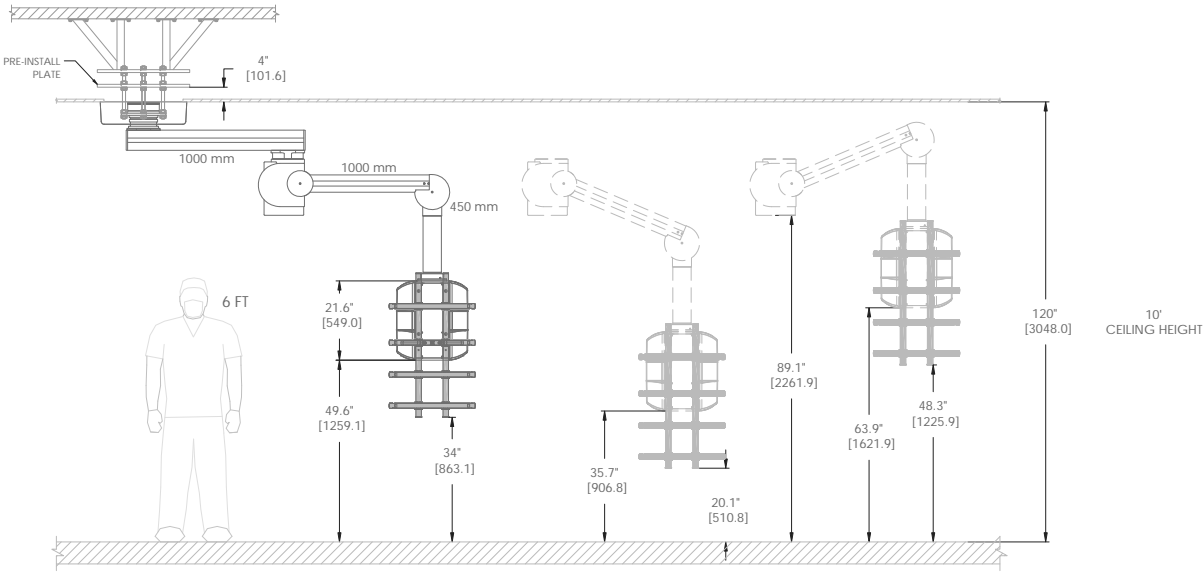
EQUIPMENT ELEVATION
VISUM DUAL LED SURGICAL LIGHT &
FLAT PANEL ARM - (B)
CVOR ROOM
VA LITTLE ROCK

REP: TADD FARMER
PM: CHRIS OUHRABKA

SHEET:
08 / 29

ARM TYPE
EDS 200 ARTICULATING

NOTE: PLEASE REFER TO FLEXIS ELEVATION DRAWING
FOR SERVICE HEAD CONFIGURATION



SCALE: 3/4" = 1'

AUTOCAD DRAWING TEMPLATE | TEM10071 | REV. A

AUTOCAD TITLEBLOCK TEMPLATE | TEM10072 | REV. A

stryker

1410 LANESIDE PARKWAY, SUITE 100
FLOWER MOUND, TEXAS 75028
PHONE: (877) 789-8106
FAX: (972) 410-7001
www.stryker.com

REV:	DATE:	PROPOSAL #:	DRAFTER:	IR:
3A	15 JAN 15	REFERENCE CSR#: 2927	E. MONTGOMERY	N/A

DISCLAIMER
THIS DOCUMENT CONTAINS CONFIDENTIAL AND PROPRIETARY INFORMATION OF STRYKER. NEITHER THIS DOCUMENT NOR THE INFORMATION HEREIN MAY BE REPRODUCED, USED, OR DISCLOSED TO OR FOR THE BENEFIT OF ANY THIRD PARTY WITHOUT THE PRIOR WRITTEN CONSENT OF STRYKER.

EQUIPMENT ELEVATION
EDS 200 ART. BOOM (1000/1000) - (C)
GENERAL OR, CVOR, ORTHO ROOM
VA LITTLE ROCK

REP: TADD FARMER
PM: CHRIS OUHRABKA

SHEET:
09 / 29