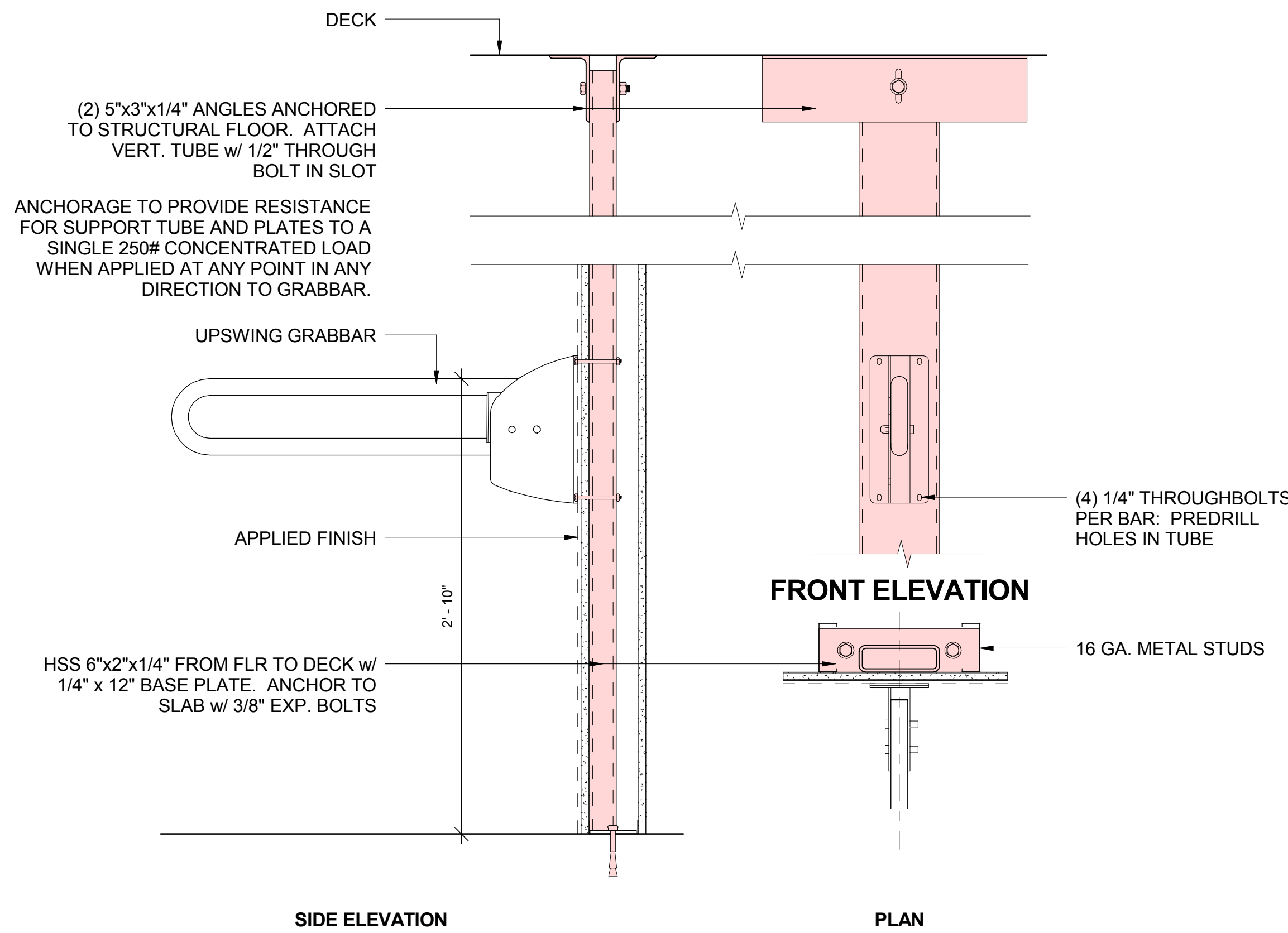
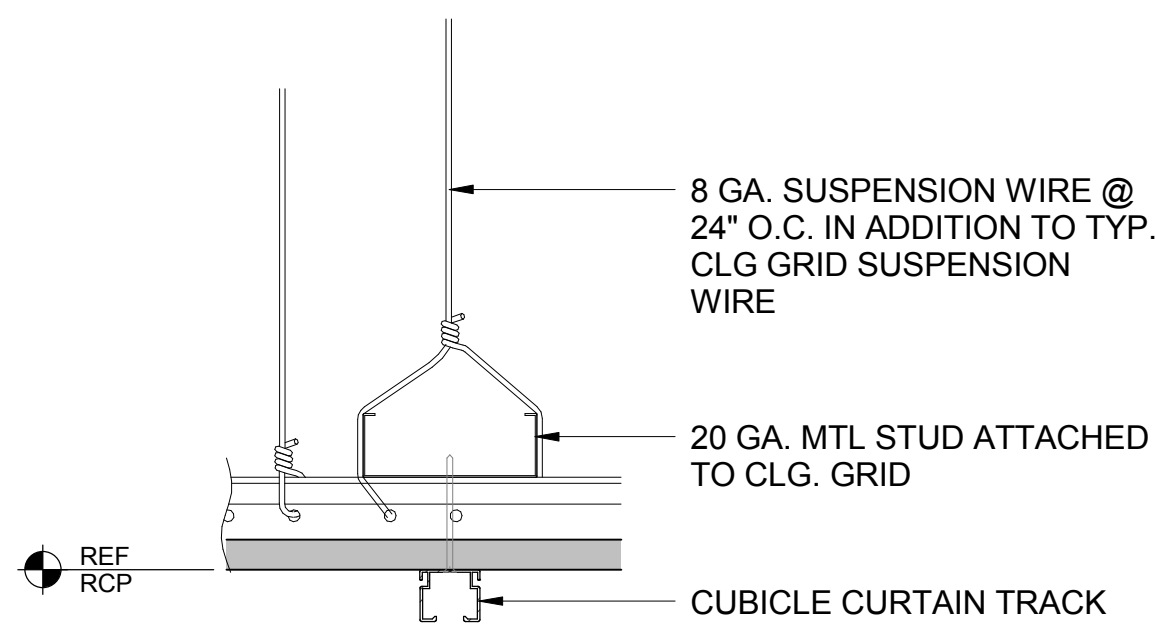


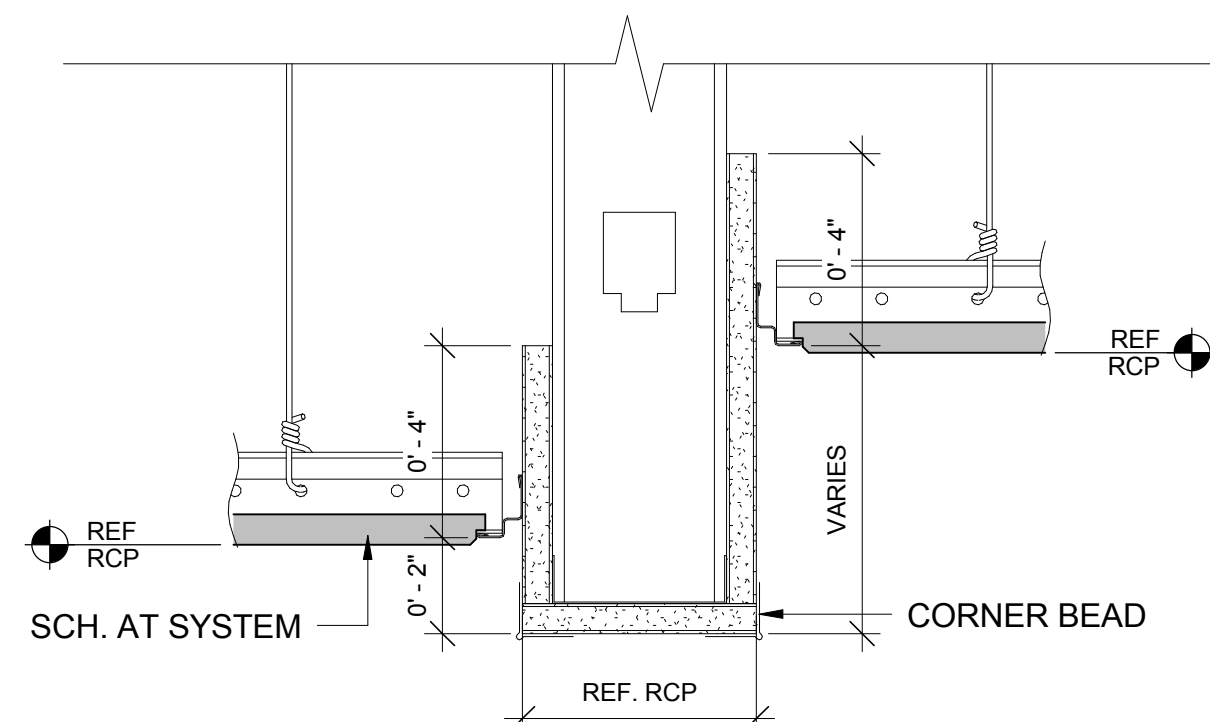
11 CABINET DETAIL
3/4" = 1'-0"



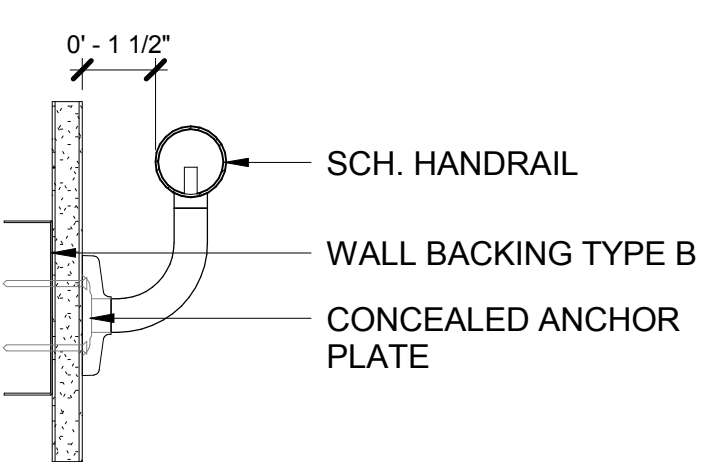
6 UP-SWING GRAB BAR
1 1/2" = 1'-0"



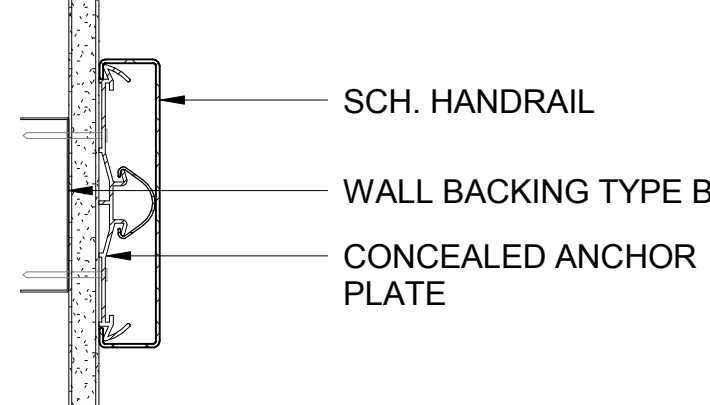
1 CUBICLE CURTAIN TRACK SUPPORT
3" = 1'-0"



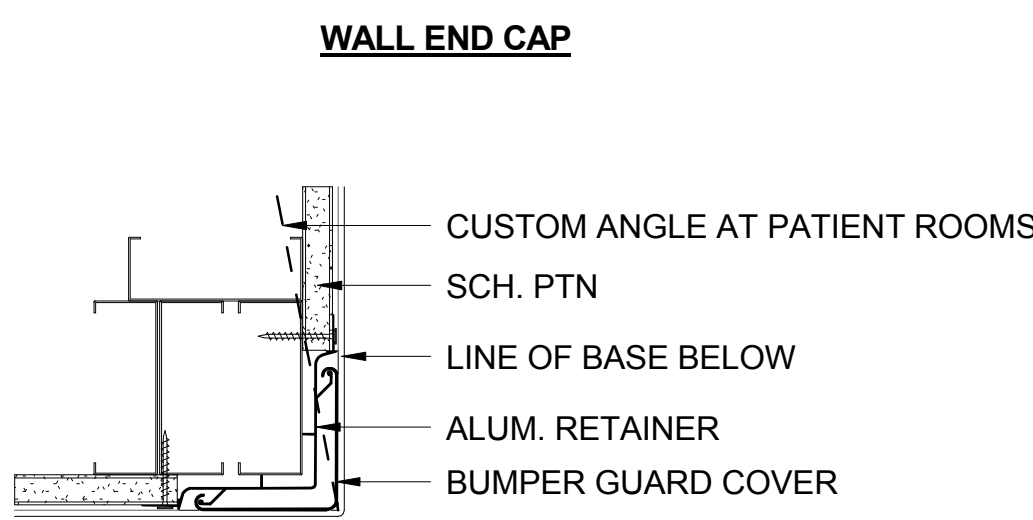
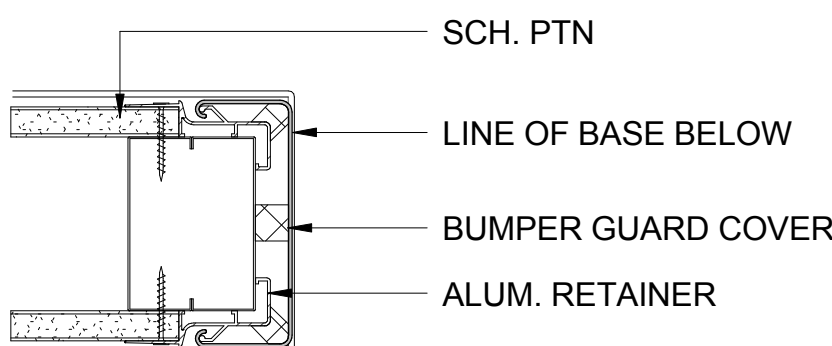
2 GYP. BD. BULKHEAD
3" = 1'-0"



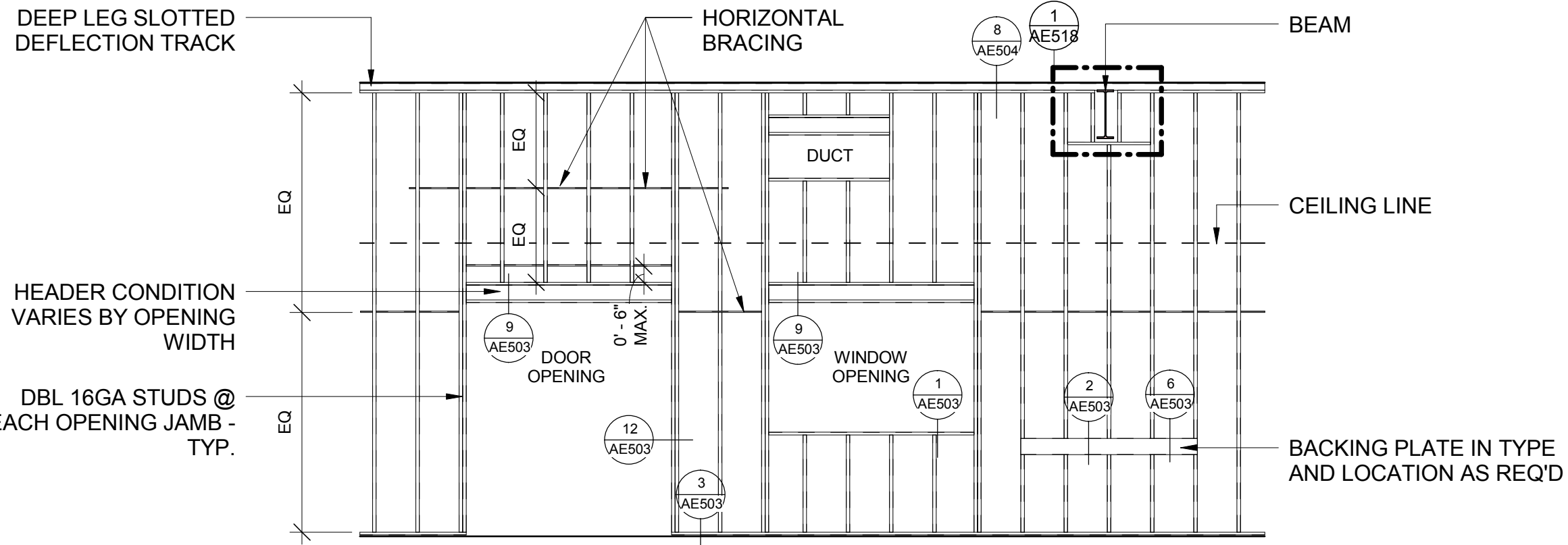
9 HAND RAIL
3" = 1'-0"



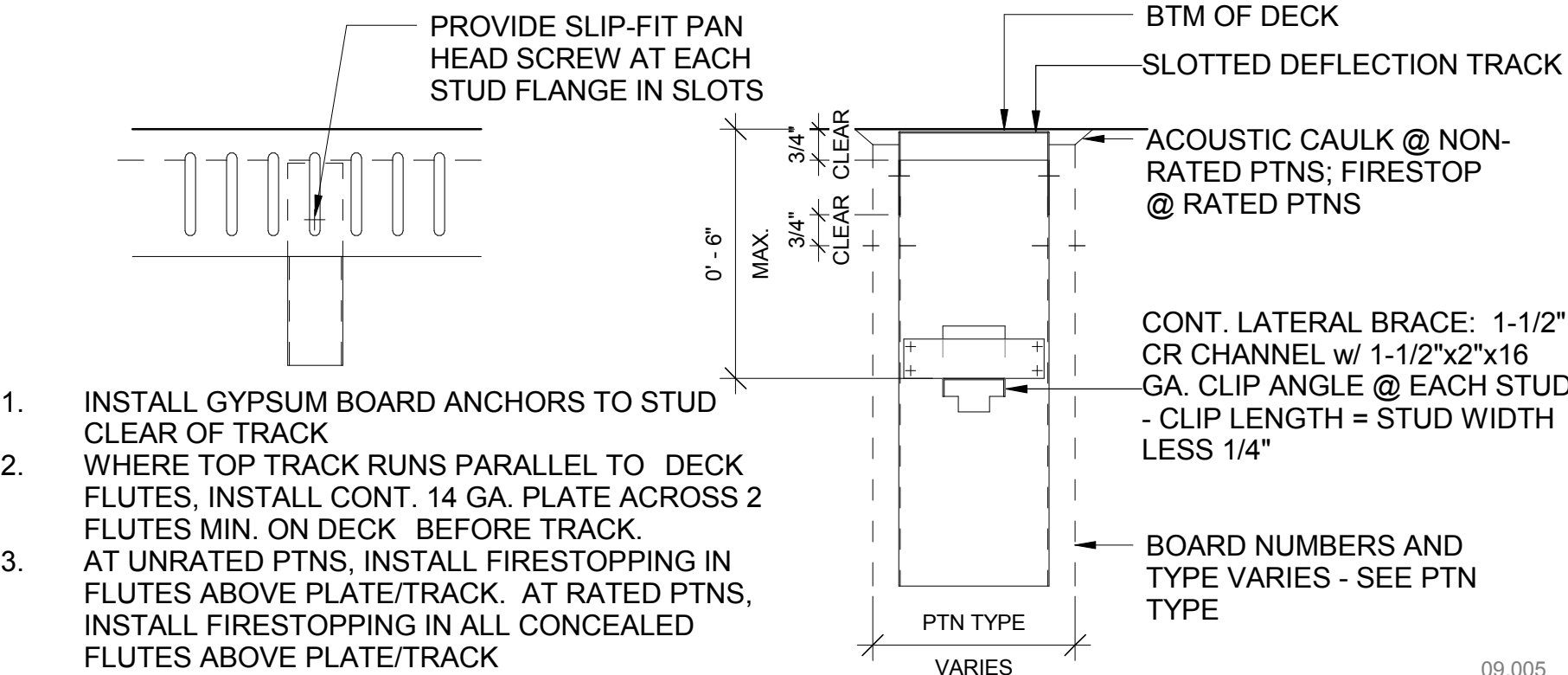
7 CRASH RAIL
3" = 1'-0"



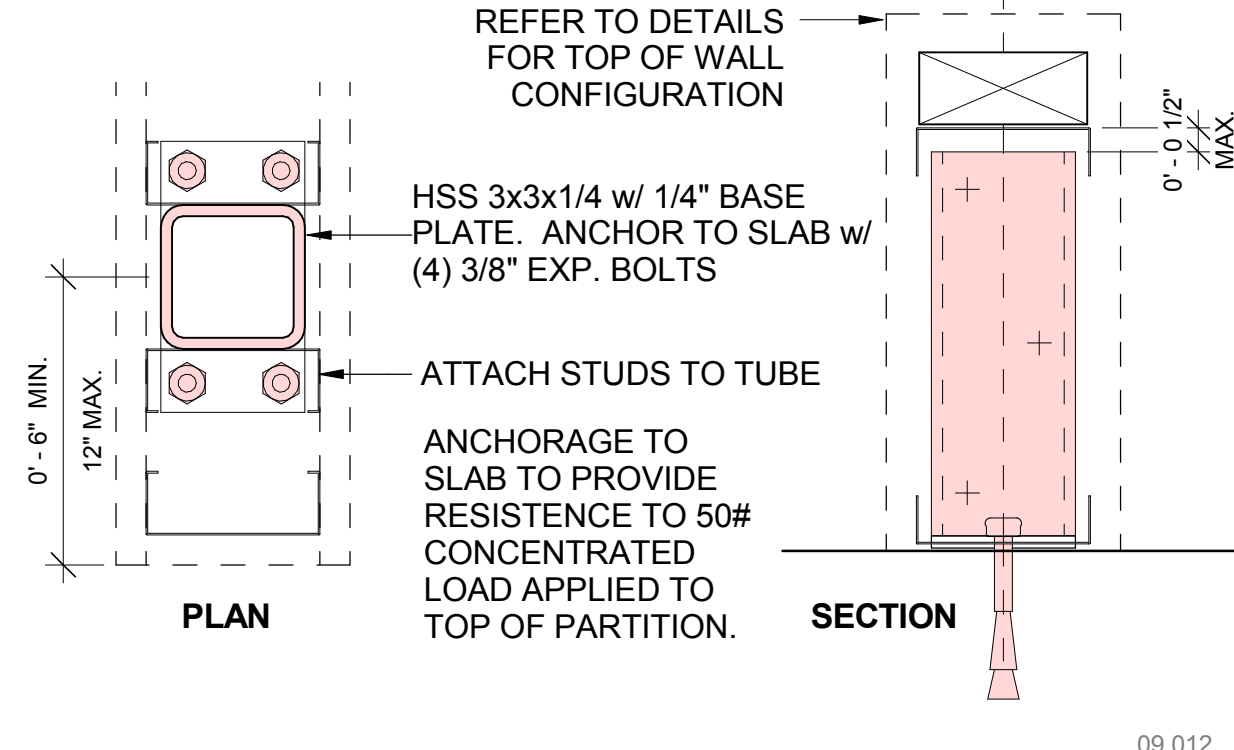
4 CORNER GUARD
3" = 1'-0"



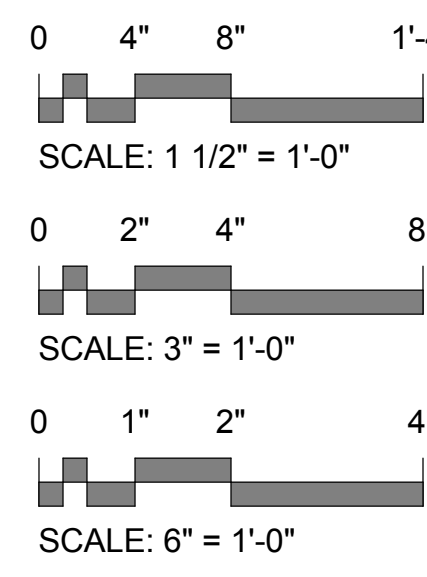
10 TYPICAL PARTITION FRAMING
1/4" = 1'-0"





8 DEFLECTION TRACK (TYP @ FULL HT PTNS)
3" = 1'-0"



5 STRUCTURE FOR PARTIAL HGT PTNS
3" = 1'-0"



CONSULTANTS:		ARCHITECT/ENGINEERS:		Drawing Title INTERIOR DETAILS	Project Title CONSTRUCT NEW OR SUITES	Project Number 598-12-207	CENTRAL ARKANSAS VETERANS AFFAIRS HEALTHCARE SYSTEM
 BES, INC 2712 BULL ST. BEAUFORT, SC 29902 843.522.2094		 BES DESIGN/BUILD, LLC 766 Middle St, Fairhope, AL 36532 Phone: 251.990.5778 Fax: 251.990.3716		Approved: Project Director	Location JOHN L. McCLELLAN MEMORIAL VETERANS HOSPITAL; LITTLE ROCK, ARKANSAS	Building Number 1	
2 REVISION #2 Revisions: Date		THESE DRAWINGS ARE NOT TO BE USED FOR CONSTRUCTION, BIDDING, RECORDATION, CONVEYANCE, SALES, OR AS THE BASIS FOR THE ISSUANCE OF A PERMIT			Date 10/16/14	Drawn BUSH	Checked Checker