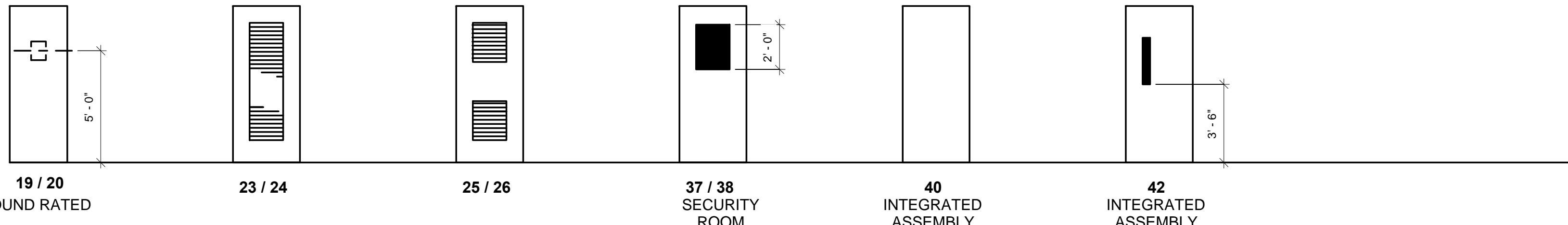
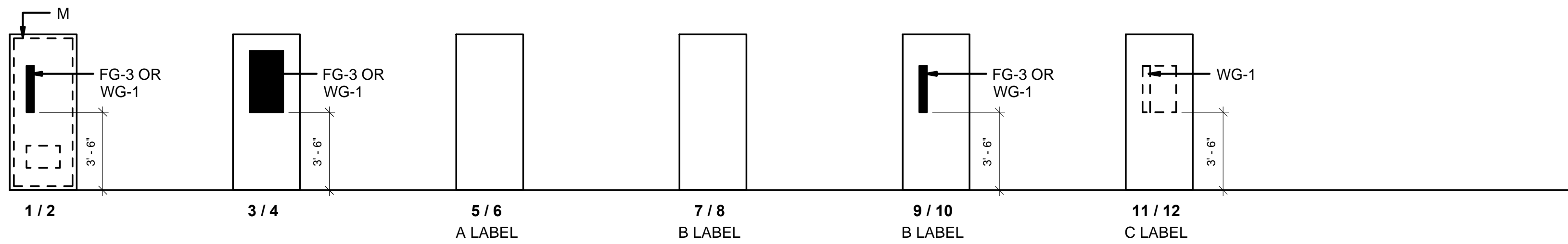
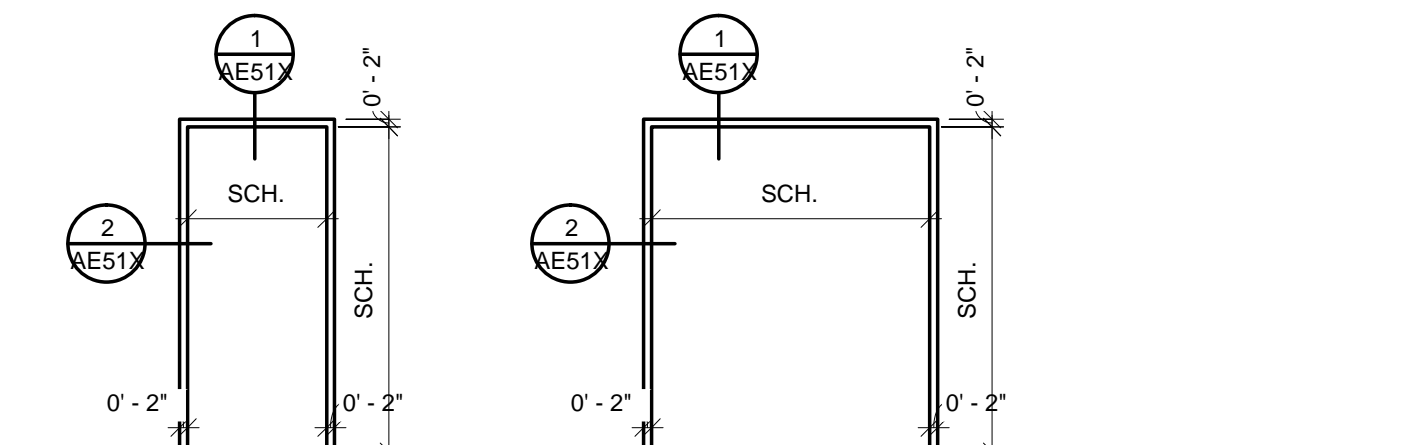


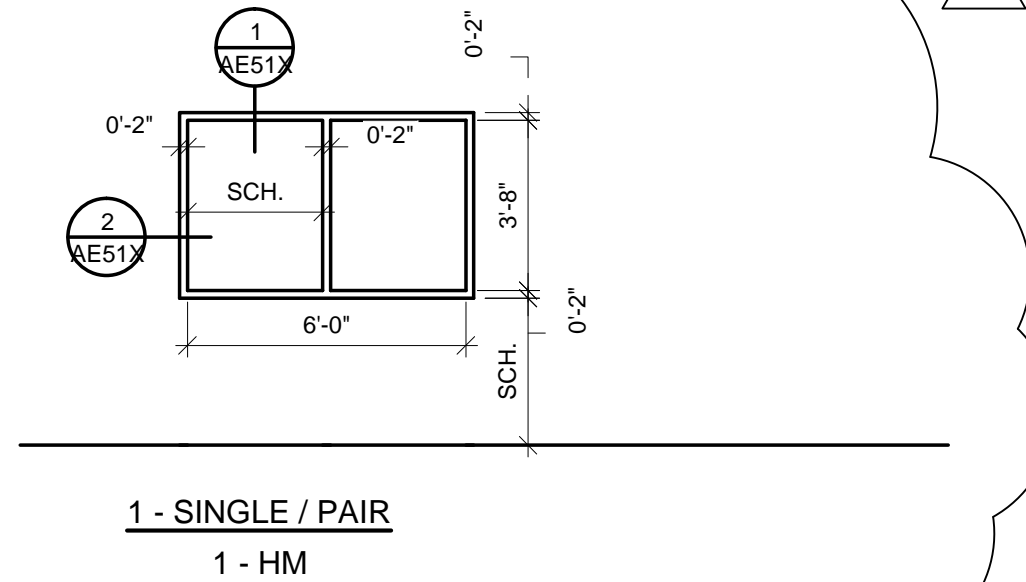
## DOORS



## DOOR FRAMES



## WINDOWS



## DOOR SCHEDULE ABBREVIATIONS / MODIFICATIONS

A ACOUSTICAL-RATED DOOR  
ADO AUTOMATIC DOOR OPERATOR  
CMU 4" HEAD @ CMU WALLS  
CR CARD READER ACCESS  
H ELECTRIC HOLD  
L LOUVER  
LP LIGHT PROOF LOUVER  
HM HOLLOW METAL  
M MECHANICAL SEAL FOR LIGHT PROOF AND SOUND RETARDING DOOR  
PB PUSH BUTTON ACCESS  
SD SLIDING DOOR (3'-6" CLEAR OPENING)  
U UNDERCUT 3/4"  
VP1 VIEW PANEL 4" x 32" (FG-3, WG-1 AT FIRE RATED DOORS)  
VP2 VIEW PANEL 24" x 36" (FG-3)  
VP3 VIEW PANEL 10" x 10" (FG-3, WG-1 AT FIRE RATED DOORS)  
WD WOOD  
WP1 VIEW PANEL 10" x 10" (WG-1)

## DOOR AND FRAME NOTES:

1. EVEN DOOR TYPES ARE HM; ODD TYPES ARE WD.
2. REFER TO SCHEDULE FOR OPENING SIZE.
3. ALL DOORS SHALL BE TYPE 1 1/4" THICK UNLESS NOTED OTHERWISE.
4. TOP AND SIDE RAILS SHALL BE 9" MIN. BOTTOM RAILS SHALL BE 12" MIN.
5. DOORS TO HAVE 1/2" UNDERCUT STANDARD.
6. FRAMES TO BE TYPE 1-HM UNLESS NOTED OTHERWISE.

## GLAZING TYPES:

FG-1: 1/4" CLEAR FLOAT GLASS  
FG-3: 1/4" CLEAR TEMPERED FLOAT GLASS  
FG-4: 1/4" CLEAR TEMPERED OBSCURE FLOAT GLASS  
LG-1: 3/4" TEMPERED LAMINATED GLAZING  
WG-1: 1/4" WIRE GLASS / 1/4" FIRE RATED GLASS  
VG-1: 1/4" LEAD GLASS

☐ GLASS OR LOUVER REQUIRED BY MODIFICATION

☐ GLASS OR LOUVER REQUIRED BY ELEVATION TYPE

## REFERENCE DESIGNATIONS FOR INTERIOR PARTITIONS

WALL TYPE	DESCRIPTION	NOMIAL WIDTH	REMARKS
-	1/4" RESIN WALL PROTECTION SHEETING	0' - 0 1/4"	RESIN TO CONT. 48" AFF.
B16	6" METAL STUD, 5/8" GYPSUM BOARD BOTH SIDES, BOTH SIDES FULL HEIGHT	0' - 7 1/4"	-
B16B	6" METAL STUD, 5/8" GYPSUM BOARD BOTH SIDES, BOTH SIDES FULL HEIGHT	0' - 7 1/4"	-
B210B	CAVITY WALL 10" OVERALL DIMENSION, 3 5/8" METAL STUD, 5/8" GYPSUM BOARD BOTH SIDES	0' - 10"	-
B_6	6" METAL STUD, 5/8" GYPSUM BOARD BOTH SIDES	0' - 7 1/4"	-
B_6A	6" METAL STUD, 5/8" GYPSUM BOARD BOTH SIDES	0' - 7 1/4"	-
B_6D	6" METAL STUD, 5/8" GYPSUM BOARD BOTH SIDES	0' - 7 1/4"	-
E16	6" METAL STUD, 5/8" GYPSUM BOARD BOTH SIDES, LEAD LINED	0' - 7 1/4"	-
E16B	6" METAL STUD, 5/8" GYPSUM BOARD BOTH SIDES, LEAD LINED	0' - 7 1/4"	-
E26D	6" METAL STUD, 5/8" GYPSUM BOARD BOTH SIDES, LEAD LINED	0' - 7 1/4"	-
E_6D	6" METAL STUD, 5/8" GYPSUM BOARD BOTH SIDES, LEAD LINED	0' - 7 1/4"	-
F16	6" METAL STUD, 5/8" GYPSUM BOARD BOTH SIDES, LEAD LINED BOTH SIDES	0' - 7 1/2"	-
K_1	1 5/8" METAL STUD, 5/8" GYPSUM BOARD ONE SIDE	0' - 2 1/4"	-
K_2	2 1/2" METAL STUD, 5/8" GYPSUM BOARD ONE SIDE	0' - 3 1/4"	-
L210A	EXTERIOR WALL 12" OVERALL DIMENSION, 5 5/8" METAL STUD, 5/8" GYPSUM BOARD ONE SIDE	1' - 0 1/2"	-

## DOOR SCHEDULE

DOOR NO	PAIR	WIDTH	DOOR HEIGHT	TYPE	MAT'L	GLAZING	FRAME		HW	SIGN	REMARKS
							TYPE	MAT'L			
1A104.3		2' - 10"	5' - 6"								
2B183		3' - 8"	7' - 0"	1	WD	--	1-HM	HM	4E		
2B184		3' - 8"	7' - 0"	1	WD	--	1-HM	HM	4E		
2B186		3' - 8"	7' - 0"	1	WD	FG-3	1-HM	HM	4E		
2B187		3' - 8"	7' - 0"	1	WD	FG-3	1-HM	HM			
2B188		3' - 8"	7' - 0"	1	WD	--	1-HM	HM	1B		
2B189		3' - 8"	7' - 0"	1	WD	--	1-HM	HM	4F		
2B190		3' - 8"	7' - 0"	42	WD	FG-3	1-HM	HM			
2B192		3' - 10"	7' - 0"	1	WD	--	1-HM	HM	4J		
2B201		4' - 0"	6' - 8"		WD						
2B202		4' - 0"	6' - 8"		WD						
2C143A		3' - 8"	7' - 0"	7	WD	FG-3	1-HM		4K / N/A		
2C143F		3' - 8"	7' - 0"		EXIST.				2G10 / 4B11		EXISTING DOOR
2C224	PR.	7' - 4"	7' - 0"	9	WD	FG-3	2-HM	HM			ADO W/ BADGE ACCESS
2F102	PR.	7' - 4"	7' - 0"	5	HM	WG-1	2-HM	HM			ADO W/ BADGE ACCESS
2F103		3' - 8"	7' - 0"	5	HM	WG-1	1-HM	HM			
2F201.1	PR.	6' - 0"	7' - 0"	9	WD	VG-1	2-HM	HM	10H		ADO / LEAD LINED
2F201.2		4' - 0"	7' - 0"	9	WD	VG-1	1-HM	HM	10H		ADO / LEAD LINED
2F202		3' - 8"	7' - 0"	1	WD	--	1-HM	HM	4Q / N/A		
2F203		3' - 8"	7' - 0"	1	WD	--	1-HM	HM	5F		
2F204		3' - 8"	7' - 0"	1	WD	--	1-HM	HM	5F		
2F205		3' - 8"	7' - 0"	1	WD	--	1-HM	HM	4C		
2F206.1	PR.	6' - 0"	7' - 0"	9	WD	VG-1	2-HM	HM	10H		ADO / LEAD LINED
2F206.2		4' - 0"	7' - 0"	2	WD	VG-1	1-HM	HM	10H		ADO / LEAD LINED
2F206.3		4' - 0"	7' - 0"	2	WD	VG-1	1-HM	HM	10H		ADO / LEAD LINED
2F207		3' - 8"	7' - 0"	1	WD	--	1-HM	HM	5D		
2F209	PR.	6' - 0"	7' - 0"	9	WD	--	2-HM	HM			
2F210		3' - 8"	7' - 0"	1	WD	--	1-HM	HM	5D		
2F211.1	PR.	6' - 0"	7' - 0"	9	WD	VG-1	2-HM	HM	10H		ADO / LEAD LINED
2F211.2		4' - 0"	7' - 0"	2	WD	VG-1	1-HM	HM	10H		ADO / LEAD LINED
2F212		3' - 8"	7' - 0"	7	WD	--	1-HM				
2F213.1	PR.	6' - 0"	7' - 0"	7	WD	VG-1	2-HM	HM	10H		ADO / LEAD LINED
2F213.2		4' - 0"	7' - 0"	2	WD	VG-1	1-HM	HM	10H		ADO / LEAD LINED
2F214		3' - 8"	7' - 0"	2	WD	FG-3	1-HM	HM	5D		
2F215		4' - 0"	6' - 8"	9	WD	FG-3	2-HM	HM			ADO
2F216		3' - 8"	7' - 0"	40	WD	--	1-HM	HM	2C10		
2F219		3' - 0"	7' - 0"	2	WD	FG-3	1-HM	HM	1		
2F221A.1		3' - 8"	7' - 0"	7	WD	--	1-HM	HM	210 / 4U11		
2F221A.2		3' - 8"	7' - 0"	7	WD	--	1-HM	HM	1		
2F221B		3' - 8"	7' - 0"	1	WD	--	1-HM	HM	1		
2F222A.1		3' - 8"	7' - 0"	1	WD	--	1-HM	HM	210 / 4U11		
2F222A.2		3' - 8"	7' - 0"	40	WD	--	1-HM	HM	1		
2F222B		3' - 8"	7' - 0"	1	WD	--	1-HM	HM	1		
2F223		3' - 9 1/4"	7' - 1 1/4"	40	HM	LG-3	1-HM	HM			
2F224		3' - 8"	7' - 0"	1	WD	--	1-HM	HM	4K		
2F225		3' - 8"	7' - 0"	1	WD	--	1-HM	HM	SH-3D		
2F227.1	PR.	6' - 0"	7' - 0"	9	WD	VG-1	2-HM	HM	10H		ADO / LEAD LINED
2F227.2		4' - 0"	7' - 0"	2	WD	VG-1	1-HM	HM	10H		ADO / LEAD LINED
2F228.1		3' - 8"	7' - 0"	9	WD	FG-3	1-HM	HM	10C		ADO W/ BADGE ACCESS
2F228.2	PR.	6' - 0"	7' - 0"	9	WD	VG-1	2-HM	HM	10C		ADO W/ BADGE ACCESS / LEAD LINED
2F229.1	PR.	6' - 0"	7' - 0"	9	WD	VG-1	2-HM	HM	10H		ADO / LEAD LINED
2F229.2		4' - 0"	7' - 0"	2	WD	VG-1	1-HM	HM	10H		ADO / LEAD LINED
2F231.1	PR.	7' - 4"	7' - 0"	9	WD	FG-3	2-HM	HM	10C		ADO W/ BADGE ACCESS
2F231.2	PR.	6' - 0"	7' - 0"	9	WD	FG-3	2-HM	HM			ADO W/ BADGE ACCESS
2F232		3' - 8"	7' - 0"	5	WD	--	1-HM	HM	5D		
2F233		3' - 8"	7' - 0"	1	WD	--	1-HM	HM	4Q		
2F237		3' - 8"	7' - 0"	1	WD	--	1-HM	HM	5F		
GF103		3' - 8"	7' - 0"	6	HM	WG-1	1-HM	HM			

## GENERAL INTERIOR PARTITIONS NOTES

UNLESS OTHERWISE INDICATED IN THE FOLLOWING "CLARIFICATION OF REFERENCE DESIGNATIONS FOR INTERIOR PARTITIONS" OR OTHERWISE INDICATED ELSEWHERE ON THE "DRAWINGS", ALL INTERIOR PARTITIONS ARE GYPSUM BOARD AND METAL STUDS AND ARE TO BE CONSTRUCTED AS LISTED BELOW.

1. ALL METAL STUD MEMBERS ARE TO BE SELECTED TO MEET MINIMUM REQUIREMENTS LISTED HERE, TO MEET INDICATED HEIGHT AND TO SUPPORT EQUIPMENT TO BE WALL-SUPPORTED.
2. ALL METAL STUDS SHALL BE 3 5/8" DEEP AND MINIMUM 0.025" THICKNESS. (FOR PARTITIONS REQUIRING HEAVIER GAGE STUDS, SEE SPECIFICATIONS)
3. ALL METAL STUDS SHALL BE SPACED 16" O.C. MAXIMUM.
4. ALL METAL STUDS SHALL EXTEND FROM FLOOR TO MIN. 6" ABOVE HIGHEST ADJACENT CEILING. BRACE TO STRUCTURE AT 48" O.C.
5. ALL METAL STUDS SHALL HAVE ONE LAYER OF GYPSUM BOARD ON EACH SIDE OF STUD.
6. ALL GYPSUM BOARD SHALL BE 5/8" THICK AND BE TYPE "X".
7. ALL GYPSUM BOARD, ON WALLS, SHALL TERMINATE AT THE UNDERSIDE OF GYPSUM BOARD CEILINGS AND A MINIMUM OF 6" ABOVE OTHER TYPE CEILINGS. WHERE CEILINGS DO NOT OCCUR, GYPSUM BOARD SHALL EXTEND TO THE STRUCTURE ABOVE.
8. ALL COMPONENTS OF FIRE RATED OR STC RATED PARTITION SYSTEMS SHALL EXTEND TO THE STRUCTURE ABOVE AND HAVE ENTIRE PERIMETER SEALED WITH APPROPRIATE SOUND-RATED OR FIRE-RATED MATERIAL.
9. WHERE FIRE RATED PARTITIONS ARE SCHEDULED, CONTRACTOR IS TO SELECT ASSEMBLIES FROM UL 263 THAT COMPLY WITH STATED PARTITION COMPONENT AND THICKNESS REQUIREMENTS. SELECT ASSEMBLIES THAT SPECIFICALLY LIST COMPONENTS APPROVED FOR USE ON THIS PROJECT.

## INTERIOR PARTITION TYPE NOTES

1. REFERENCE DESIGNATIONS INDICATE SPECIFIC REQUIREMENTS TO BE SUBSTITUTED IN THE GENERAL PARTITION TYPE DESCRIBED ABOVE.
2. WHERE A REFERENCE DESIGNATION IS NOT INDICATED ON THE FLOOR PLANS, THE PARTITION DESIGNATION SHALL BE TYPE 4102.
3. NOT ALL PARTITION TYPES LISTED ARE USED ON PROJECT.
4. NOTE: THE THICKNESSES OF PARTITIONS SHOWN ARE FINISH SURFACE TO FINISH SURFACE EXCLUDING APPLIED FINISHES SUCH AS THIN-SET CERAMIC TILE, FINISH SYSTEMS, ACOUSTICAL PANELS OR WALL PROTECTION PANELS.

CONSTRUCTION DOCUMENTS  
FULLY SPRINKLERED

CONSULTANTS:		ARCHITECT/ENGINEERS:		Drawing Title <b>SCHEDULES</b>		Project Title <b>CONSTRUCT NEW OR SUITES</b>		Project Number <b>598-12-207</b>		CENTRAL ARKANSAS VETERANS AFFAIRS HEALTHCARE SYSTEM	
 BES, INC 2712 BULL ST. SEAFORD, SC 29902 843.522.2094		THESE DRAWINGS ARE NOT TO BE USED FOR CONSTRUCTION, BIDDING, RECORDATION, CONVEYANCE, SALES, OR AS THE BASIS FOR THE ISSUANCE OF A PERMIT		 BES DESIGN/BUILD, LLC 766 Middle St, Fairhope, AL 36532 Phone: 251.990.5778 Fax: 251.990.3716		Location <b>JOHN L. McCLELLAN MEMORIAL VETERANS HOSPITAL; LITTLE ROCK, ARKANSAS</b>		Building Number <b>1</b>			
								Drawing Number			
								Date <b>01/23/15</b>			
2. REVISE DOOR SCHEDULE		8.18.15						<b>AE601</b>		Dwg. 62 of 130	