

6  
5  
4  
3  
2  
1  
A  
B  
C  
D  
E  
F  
m  
n

three inches = one foot  
one and one half inches = one foot  
one inch = one foot  
three quarters inch = one foot  
one half inch = one foot  
one quarter inch = one foot  
one eighth inch = one foot



6

5

4

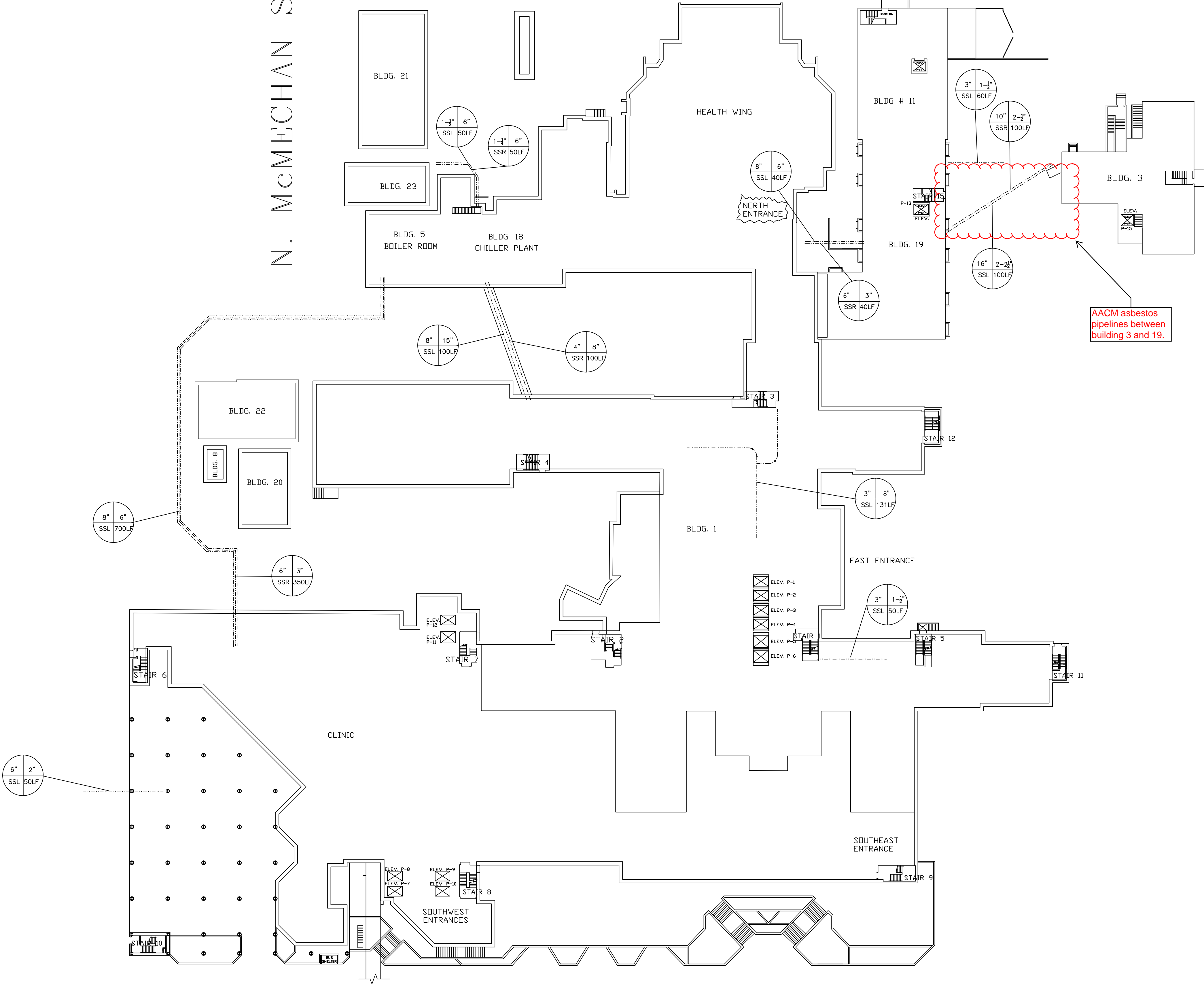
3

2

1

N. McMECHAN STREET

N. KELLY STREET



NE 13th STREET

1 UNDERGROUND STEAM PIPE PLAN  
SCALE: 1/32" = 1'-0"

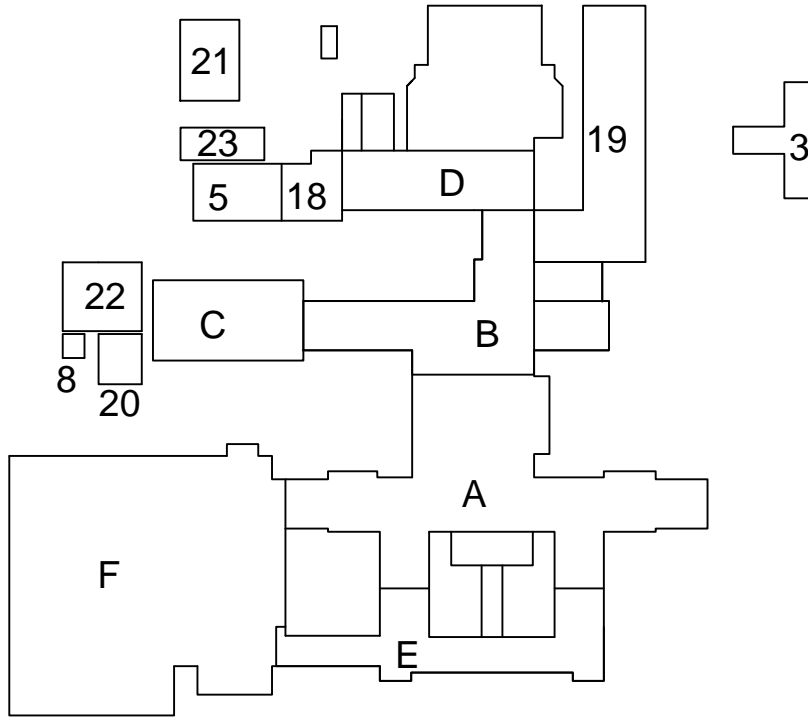
ASBESTOS CONTAINING MATERIAL QUANTITY SUMMARY	
MATERIAL	QUANTITY (INACCESSIBLE AREA)
PRESUMED THERMAL PIPE INSULATION & ASSOCIATED PIPE FITTING INSULATION	1,790 LF

ASBESTOS CONTAINING MATERIAL QUANTITY SUMMARY	
MATERIAL	QUANTITY (ACCESSIBLE AREAS)
THERMAL PIPE INSULATION, PAINTED WHITE, ORANGE, GREEN & GRAY	131 LF
THERMAL ELBOW INSULATION, PAINTED WHITE, LT. BLUE, GRAY, BROWN & DK. GREEN	50 EA

- ASBESTOS NOTES FOR BUILDING 3 AND 19**
- PRESUMED ASBESTOS CONTAINING THERMAL SYSTEM INSULATION LOCATED UNDERGROUND BETWEEN BUILDING 3 AND BUILDING 19
- 100 LINEAR FEET OF 6" OUTER DIAMETER PIPE INSULATION ON THE MEDIUM PRESSURE STEAM SUPPLY
  - 100 LINEAR FEET OF 4" OUTER DIAMETER PIPE INSULATION ON GRAVITY STEAM RETURN

**LEGEND**

- ACM PIPE INSULATION / ELBOWS
- PIPE FITTING INSULATION
- HVAC DUCT SEAM SEALANTS (WHITE/TAN) AND COMPOUNDS (WHITE) APPLIED ON FIBERGLASS INSULATION AND ON METAL DUCT
- HVAC REGISTER (2'x2' OR 4'x6')
- BLACK TAR SEALANT ON PIPE INSULATION AND PIPE FITTINGS
- FLOOR TILE AND MASTIC
- MASTIC BENEATH FLOOR TILE/CARPET (BLACK AND YELLOW)
- BLACK SPRAY-ON MASTIC ON WALLS
- CHASE WITH THERMAL PIPE INSULATION/ACM ELBOWS, DUCT COMPOUND MASTIC AND BLACK TAR SEALANT
- JOINT COMPOUND APPLIED ON DRYWALL WALLS
- BLOWN-IN INSULATION
- INSULATION ABOVE REFRIGERATOR
- COUNTERTOP
- LINEAR FEET SQUARE FEET
- W = OUTER DIAMETER OF PIPE  
X = INSULATION THICKNESS  
Y = TYPE OF SYSTEM  
Z = QUANTITY
- A = DUCT SIZE  
B = INSULATION THICKNESS  
C = TYPE OF SYSTEM
- CWS = COLD WATER SUPPLY  
CWR = COLD WATER RETURN  
CHWS = CHILLED WATER SUPPLY  
CHWR = CHILLED WATER RETURN  
HWS = HOT WATER SUPPLY  
HWR = HOT WATER RETURN  
SSL = STEAM SUPPLY LINE  
SSR = STEAM RETURN LINE  
SWS = SECONDARY WATER SUPPLY  
SWR = SECONDARY WATER RETURN  
SR = STEAM SUPPLY RISER  
RR = STEAM RETURN RISER  
HS = HVAC SUPPLY  
HR = HVAC RETURN  
ELB = ELBOW (TSI)  
EA = EXHAUST AIR



KEY PLAN

<b>CONSULTANTS:</b>		THESE DRAWINGS ARE NOT TO BE USED FOR CONSTRUCTION, BIDDING, RECORDATION, CONVEYANCE, SALES, OR AS THE BASIS FOR THE ISSUANCE OF A PERMIT	<b>ARCHITECT/ENGINEERS:</b>  BES DESIGN/BUILD, LLC 766 Middle St, Fairhope, AL 36532 Phone: 251.990.5778 Fax: 251.990.37	Drawing Title <b>UNDERGROUND STEAM PIPE PLAN</b>		Project Title <b>ASBESTOS CONTAINING MATERIALS</b>		Project Number <b>635-14-102</b>		<b>OFFICE OF CONSTRUCTION and FACILITIES MANAGEMENT</b> 	
Revisions:				Approved: Project Director		Location <b>VAMC, OKLAHOMA CITY, OKLAHOMA</b>		Building Number <b>1</b>			Drawing Number <b>1HA114</b>
Date				Date <b>12 JUNE 2015</b>		Drawn <b>TA</b>		Checked <b>LW</b>		Dwg. 22 of 22	

6

5

4

3

2

1