

one and one half inches = one foot
one inch = one foot
three quarters inch = one foot
one half inch = one foot
one quarter inch = one foot
one eighth inch = one foot
one sixteenth inch = one foot

MARGRAVE STREET

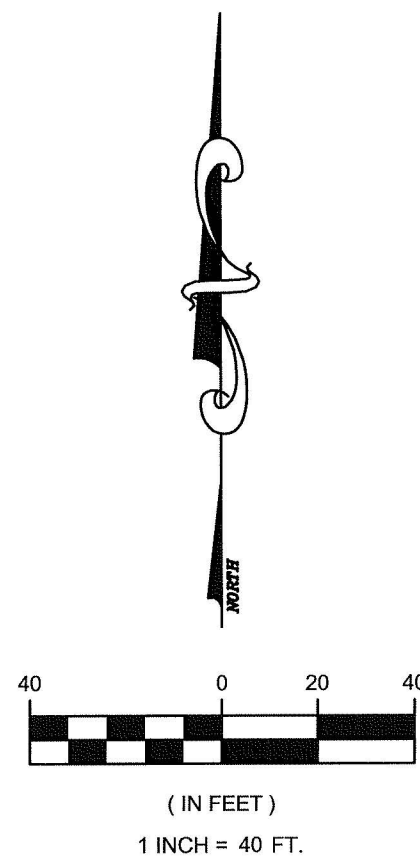
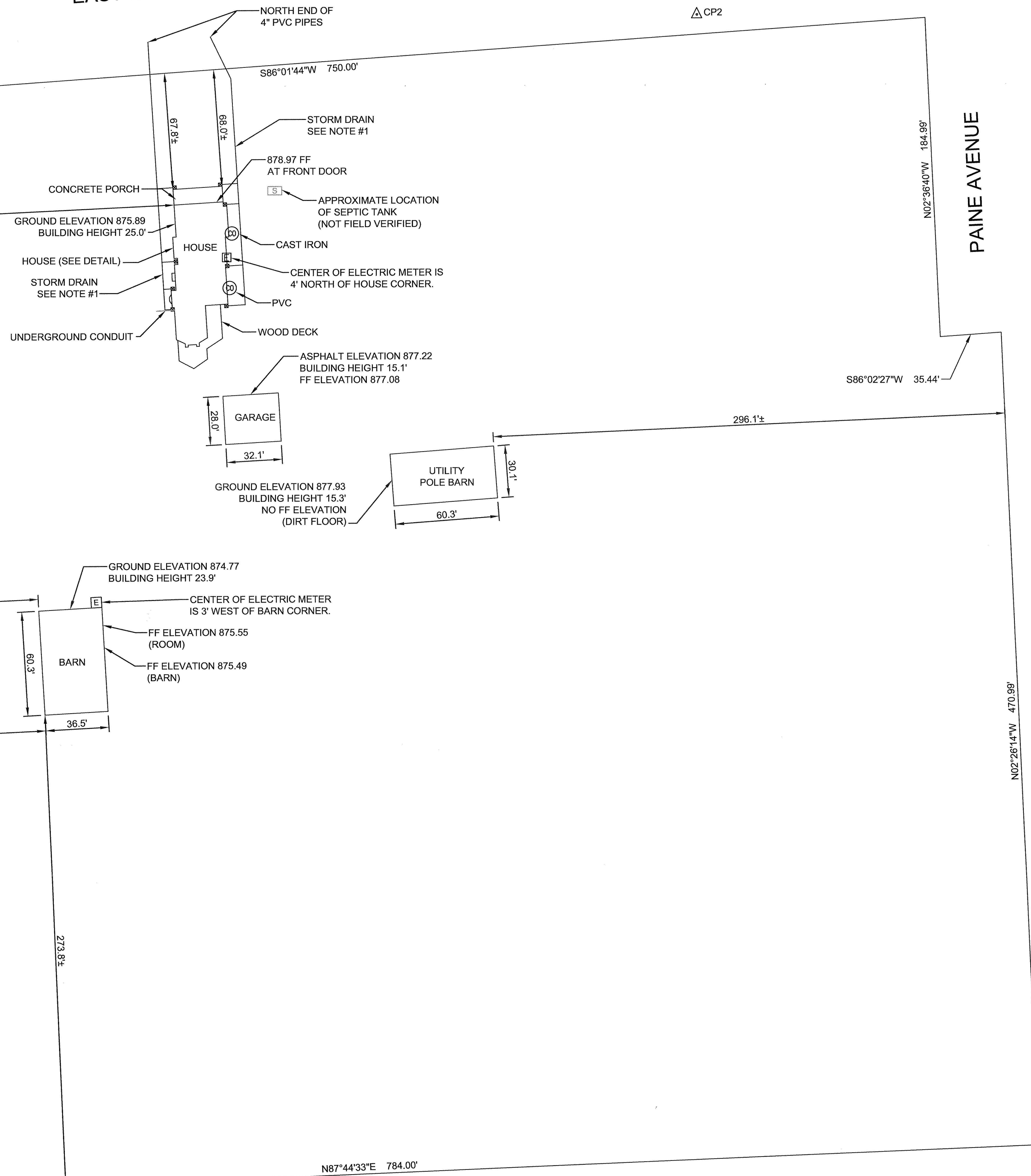
CP1

CP3

EAST NATIONAL AVENUE

PAINE AVENUE

EIGHTEENTH STREET



CONTOUR INTERVAL: 1'

LEGEND

- FOUND 1/2" IRON PIN WITH PEC CAP
- DOWN SPOUT
- ELECTRIC METER
- SANITARY SEWER CLEAN OUT
- SEPTIC TANK
- STORM DRAIN LINES
- FINISHED FLOOR

NOTE
1. APPROXIMATE LOCATION OF STORM DRAIN, NOT FIELD VERIFIED.

NOTE
THIS IS NOT A BOUNDARY SURVEY. CONTROL POINTS 1 AND 2 ALONG WITH BM #1 WAS USED FROM AN ALTA SURVEY BY PEC, DATED 4-11-2013, TO LOCATE BUILDINGS, ESTABLISH FINISHED FLOOR ELEVATIONS AND OTHER ITEMS AS SHOWN ON THIS DRAWING.

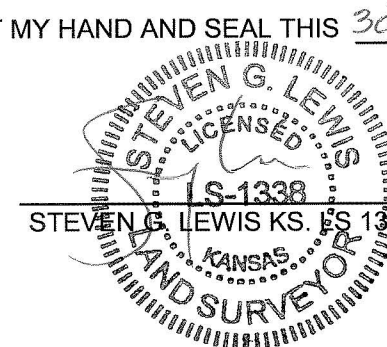
HORIZONTAL CONTROL POINT NO. 1 N: 1,755,451.4780, E: 2,410,437.9738
MAG NAIL SET IN ASPHALT AT THE NORTHEAST CORNER OF EAST NATIONAL AVENUE AND MARGRAVE STREET.
54.93' SOUTH TO A 60d NAIL IN WEST FACE OF POWER POLE.
18.46' SOUTHWEST TO CENTER OF WATER VALVE
44.93' NORTH TO NORTHEAST CORNER OF CURB INLET.

HORIZONTAL CONTROL POINT NO. 2 - N: 1,755,437.8270, E: 2,411,071.0602
1/2" ROD WITH "PEC CP" CAP NEAR THE NORTHEAST CORNER OF THE PROPERTY - IN BETWEEN VINYL FENCE AND THE SOUTH SIDE OF EAST NATIONAL AVENUE.
44.71' WEST TO 60d NAIL IN NORTH FACE OF 36" ELM TREE.
68.66' EAST TO 60d NAIL IN NORTH FACE OF 12" TREE.
52.70' NORTHEAST TO 60d NAIL IN WEST FACE OF POWER POLE.

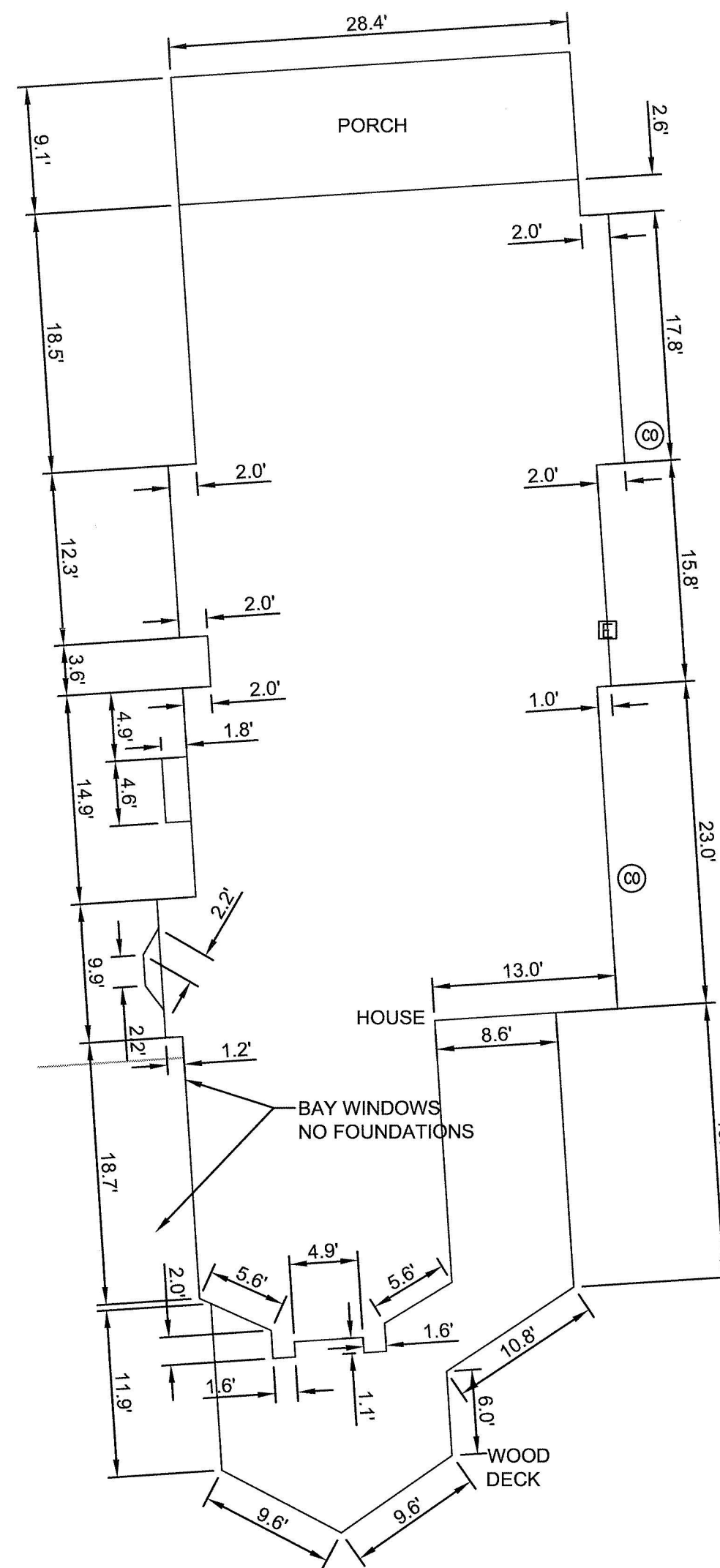
BENCH MARK NO. 1 = N: 1,755,496, E: 2,410,432, EL: 868.425
CHISELED SQUARE IN THE NORTHWEST CORNER OF THE CURB INLET THAT IS 20' NORTH OF THE CURB RETURN AT THE NORTHEAST CORNER OF EAST NATIONAL AVENUE AND MARGRAVE STREET.

SURVEYORS CERTIFICATE
I, STEVEN G. LEWIS, KS. LS 1338 A DULY LICENSED SURVEYOR IN THE STATE OF KANSAS, DO HEREBY CERTIFY THAT THIS DRAWING IS REPRESENTATIVE OF THE WORK DONE BY ME OR UNDER MY DIRECT SUPERVISION AND WAS COMPLETED IN THE FIELD DURING THE MONTH OF SEPTEMBER, 2014.

IN WITNESS WHEREOF I HAVE HEREUNTO SET MY HAND AND SEAL THIS 30TH DAY OF APRIL, 2015.



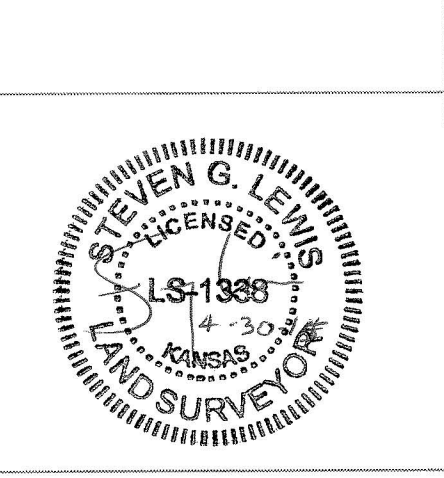
HOUSE DETAIL



Revisions:	Date

CONSULTANTS:

TSE
Professional Engineers & Land Surveyors
702 South Main - Joplin, Missouri 64801
403 W. First St., Ste. 300 - Claremore, OK 74017
Mailing Address:
P.O. Box 1807 - Joplin, Missouri 64802
Phone (417) 781-0843 - Fax (417) 781-0714
TOLL FREE 1-866-781-0843
www.tstate-engineering.com
Copyright © Tstate Engineering, Inc.



ARCHITECT/ENGINEERS:

4
517 7th street
rapid city sd
57701
p 605.342.9470
f 605.342.2377
www.4front.biz
FOURFRONT
DESIGN
INC.

Drawing Title
Survey: Supplemental

Approved: Project Director
Rodney Duich, P.E.

Project Title
Demolition of Existing Buildings at Ft. Scott Cemetery -1696.028

Location
816 East National

Date
May 1, 2015

Checked
EH

Drawn

Project Number
789CM3914

Building Number

Drawing Number
B-100

Dwg. 3 of 12

Bid Documents

NCA DESIGN AND CONSTRUCTION SERVICE

Department of Veterans Affairs