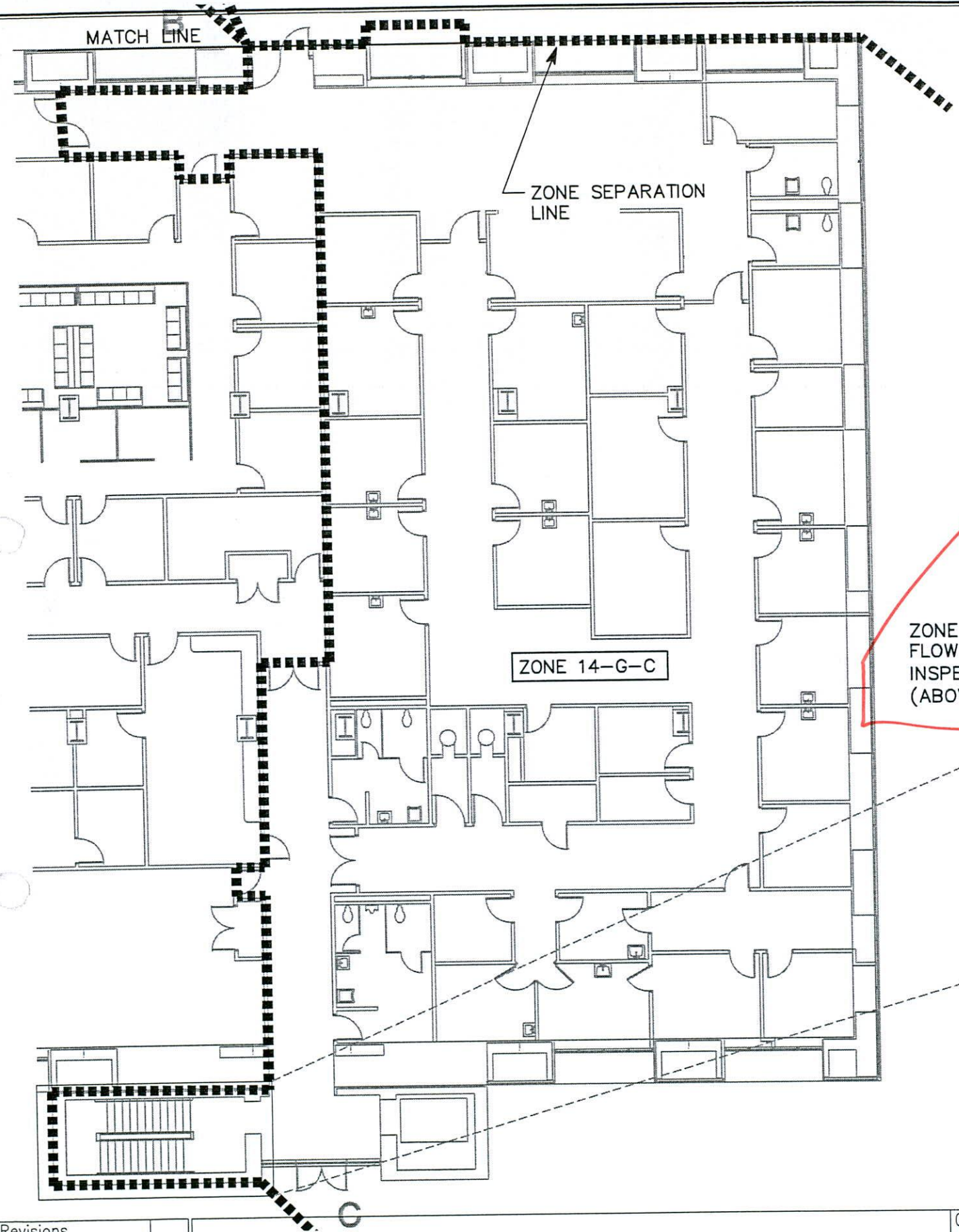


File Name: P:\2010\20100195\Drawings\Bldg 14\3Sheet\95F.14.2c.dwg Last Plotted: 2010/11/01 12:20 PM By: jdd

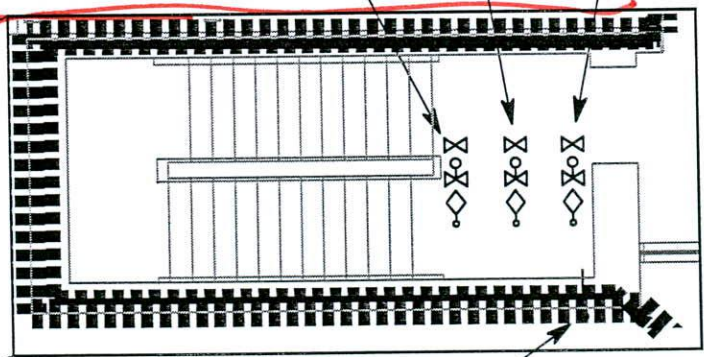


BUILDING 14 POST INDICATOR VALVE WITH TAMPER SWITCH (ON FIRELINE #2 OF 2 FOR BLDG 14 ONLY, FED THROUGH PUMP) ABOVE LOADING DOCK

ZONE 14-G-A CONTROL VALVE, FLOW SWITCH, AND COMBINATION INSPECTORS TEST/DRAIN (ABOVE CEILING)

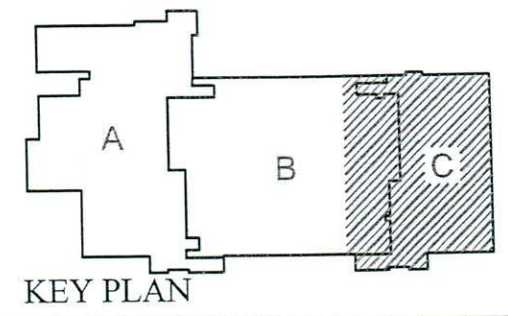
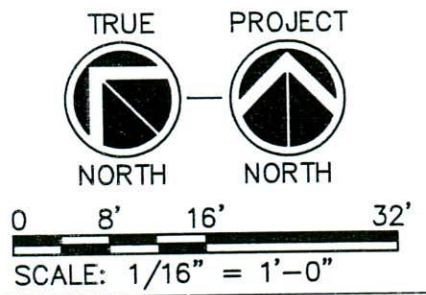
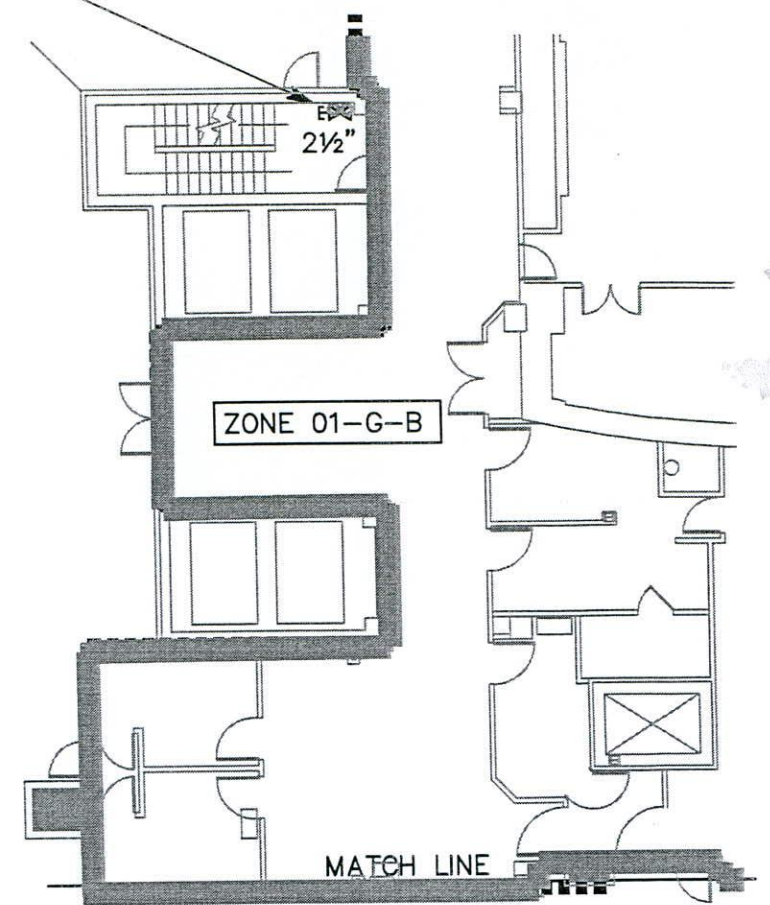
ZONE 14-G-B CONTROL VALVE, FLOW SWITCH, AND COMBINATION INSPECTORS TEST/DRAIN (ABOVE CEILING)

ZONE 14-G-C CONTROL VALVE, FLOW SWITCH, AND COMBINATION INSPECTORS TEST/DRAIN (ABOVE CEILING)



ZONES A, B, & C INSPECTORS TEST/DRAIN OUTLET FOR GROUND, 1ST, 2ND, 3RD, & PENTHOUSE FLOORS

HOSE VALVE ON STAIRWELL STANDPIPE (CONSIDERED PART OF BLDG 14)



Revisions	Date

Consultant

 **SPECTRUM ENGINEERS**

324 South State Street, Suite 400  
Salt Lake City, Utah 84111  
801.328.5151  
800.678.7077  
FAX 801.328.5155  
www.spectrum-engineers.com

Project Title CAMPUS WIDE FIRE SPRINKLING TEST STATION MODIFICATION AND DEFICIENCIES STUDY	
Consultant Project No. 20100195	
Drawn BXW	Checked JDD

Drawing Title BUILDING 14 GROUND LEVEL ZONE C
--------------------------------------------------------

Date 08.03.2010
Project No. 660-10-110
Building No. 14

DRAWING No. **F.14.2C**

Dep. of XX

 **VAMC**

Department of

AS-BUILT RECORD DRAWINGS