

P:\Projects\11000\11226\DISCIPLINE\Mech\Working\Sheets\Order #4\S-10A\11226-M-101.dwg 11-25-13 05:06:15 PM j/fair

ISSUED FOR CONSTRUCTION DOCUMENTS (FINAL BD)	11/26/13
ISSUED FOR 100% DESIGN SUBMITTAL	10/29/13
ISSUED FOR 75% DESIGN DEVELOPMENT	06/22/13
Prepared By	Date

CONSULTANTS:

ARCHITECT/ENGINEERS:

STEPSTEIN
600 West Fulton Street
Chicago, Illinois 60661

Drawing Title
MECHANICAL ROOM
VENTILATION PLAN

Project Title
REPLACEMENT OF AHU S-10A
IN BUILDING 30

Project Number
537-10-122
Building Number
BUILDING 30
Drawing Number
30-M-101

Office of
Construction
and Facilities
Management

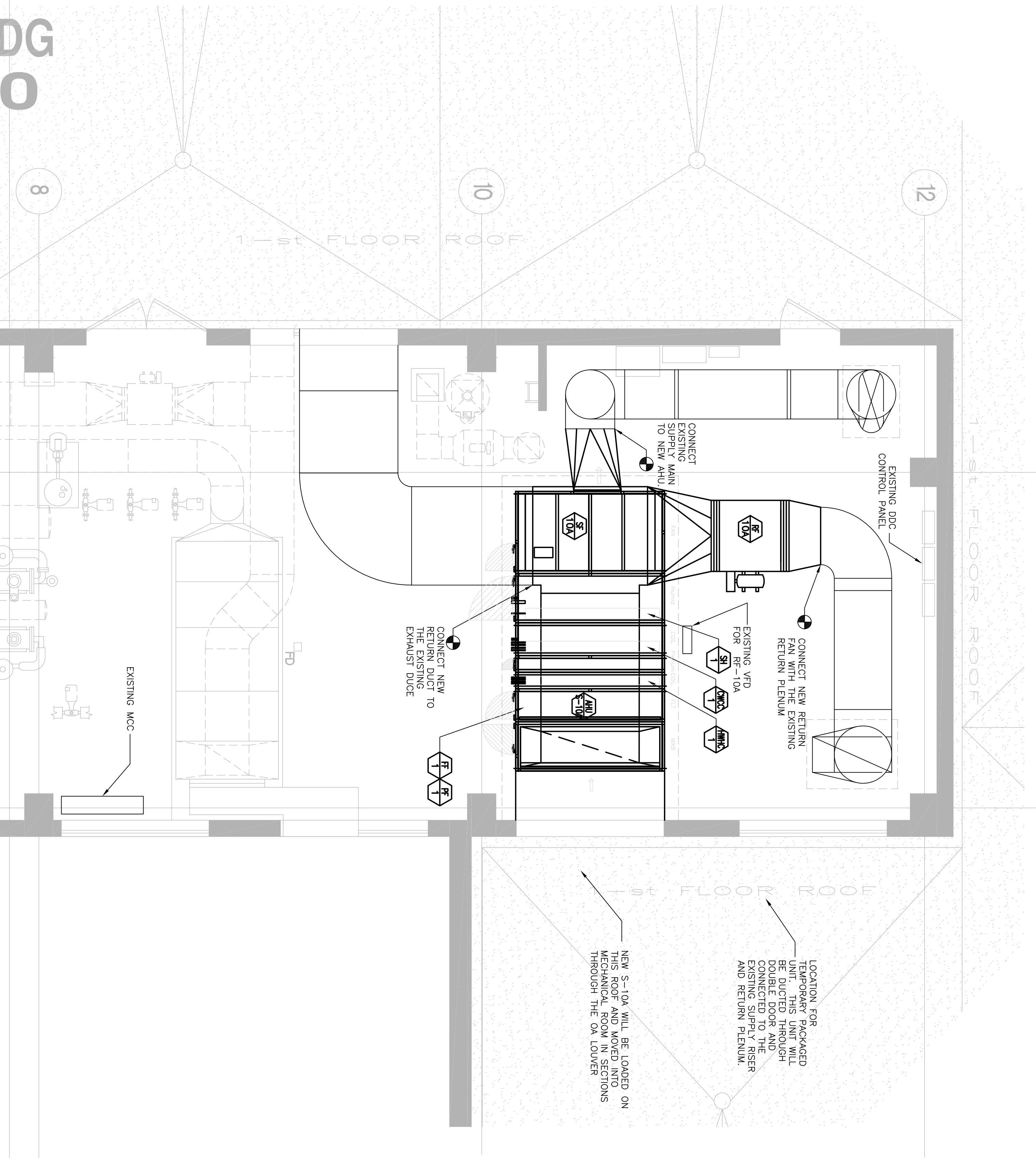
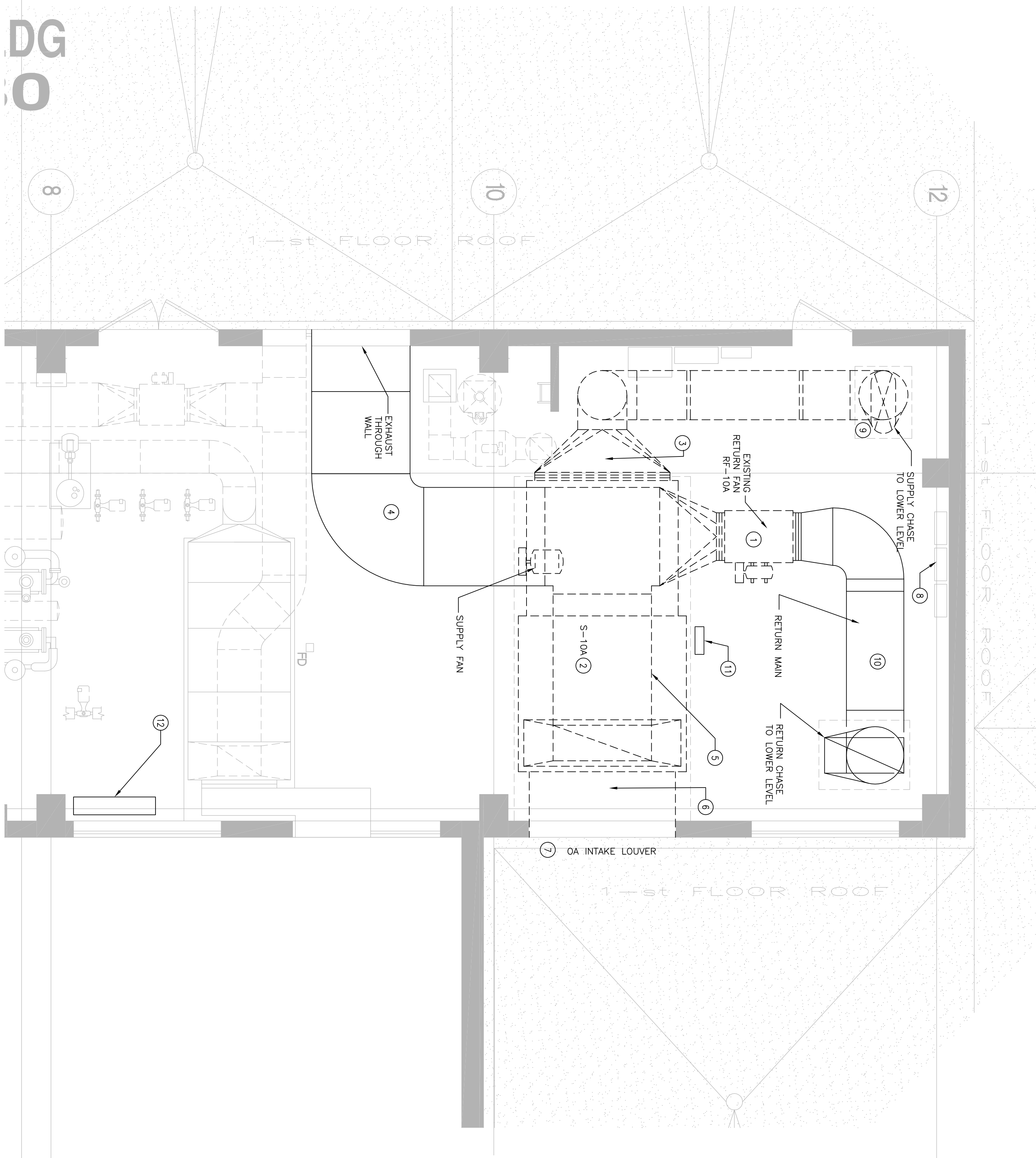


Scale: 1/4"=1'-0"

2 MECHANICAL VENTILATION DEMO PLAN



1 MECHANICAL VENTILATION FLOOR PLAN



GENERAL DEMO NOTES:

- EXISTING LOUVERS TO BE REMOVED FOR NEW BACK FOR NEW S-10A OA INTAKE

KEY NOTES:

- REMOVE EXISTING RETURN FAN
- REMOVE EXISTING AHU S-10A
- DEMO CONNECTION SECTION FROM SUPPLY MAIN TO EXISTING AHU S-10A
- RECONNECT EXISTING EXHAUST DUCT WITH DAMPER
- DEMO EXISTING OA INTAKE BOX WITH DAMPERS
- DEMO EXISTING OA INTAKE BOX WITH DAMPERS
- EXISTING LOUVERS REMAIN FOR REUSE
- EXISTING DDC CONTROL PANEL OF S-10A TO REMAIN
- EXISTING SMOKE DAMPERS REMAIN, CONTRACTOR SHALL CHECK AND MAKE SURE THEY ARE FUNCTIONING PROPERLY
- EXISTING RETURN MAIN AND RISER REMAIN
- EXISTING VFD OF RF-10A TO REMAIN
- EXISTING VFD OF SF-10A TO REMAIN

GENERAL NOTES:

- PROVIDE NEW CONTROL VALVES FOR COOLING COIL, HEATING COIL, AND HUMIDIFIER WITH NEW DUCTWORK AND AHU, RELOCATE FINE SPRINKLER HEADS TO THE EXISTING CONCRETE PAD
- IF REQUIRED
- NEW AHU WILL BE MOUNTED ON THE EXISTING CONCRETE PAD
- NEW OA INTAKE BOX WITH DAMPERS BETWEEN EXISTING OA INTAKE LOUVER AND NEW AHU
- EXISTING JOHNSON CONTROL DDC PANEL LOCATED ON NORTH WALL OF MECHANICAL ROOM SHALL BE REPAIRED FOR NEW AHU
- REUSE EXISTING VFDs OF SUPPLY FAN AND RETURN FAN

RECOMMENDED REMOVAL & INSTALLATION PROCEDURE

- DISASSEMBLE EXISTING AHU S-10A INTO PIECES CAPABLE OF REMOVAL
- REMOVE EXISTING AHU S-10A INTO PIECES CAPABLE OF REMOVAL
- REMOVE EXISTING AHU S-10A INTO PIECES CAPABLE OF REMOVAL
- REMOVE EXISTING AHU S-10A INTO PIECES CAPABLE OF REMOVAL
- REMOVE EXISTING AHU S-10A INTO PIECES CAPABLE OF REMOVAL
- REMOVE EXISTING AHU S-10A INTO PIECES CAPABLE OF REMOVAL
- REMOVE EXISTING AHU S-10A INTO PIECES CAPABLE OF REMOVAL
- REMOVE EXISTING AHU S-10A INTO PIECES CAPABLE OF REMOVAL
- REMOVE EXISTING AHU S-10A INTO PIECES CAPABLE OF REMOVAL
- REMOVE EXISTING AHU S-10A INTO PIECES CAPABLE OF REMOVAL
- REMOVE EXISTING AHU S-10A INTO PIECES CAPABLE OF REMOVAL
- REMOVE EXISTING AHU S-10A INTO PIECES CAPABLE OF REMOVAL

TEMPORARY HVAC UNIT

- A TEMPORARY HVAC UNIT WILL BE REQUIRED TO MAINTAIN ENVIRONMENTAL CONDITIONS WITHIN THE INTERIOR SPACES SERVED BY AHU S-10A DURING UNIT REPAIRS
- REPAIRS TO THE EXISTING BUILDING SPRING SYSTEMS ELECTRICAL SERVICE WILL BE AVAILABLE AT THE UNIT LOCATION
- CONTRACTOR TO LOCATE TEMPORARY HVAC UNIT ON ROOF
- CONNECTIONS TO INSURE PROPER OPERATION OF EXISTING HVAC SYSTEM DURING CONSTRUCTION
- CONTRACTOR TO DISASSEMBLE AND REMOVE TEMPORARY UNIT FROM SITE AFTER NEW UNIT IS IN PLACE AND OPERATING SATISFACTORILY
- CONTRACTOR RESPONSIBLE FOR PROTECTING EXISTING ROOF MEMBRANE IN AREAS FOR STAGING, DEMOLITION, NEW CONSTRUCTION AND LOCATION OF TEMPORARY HVAC UNIT