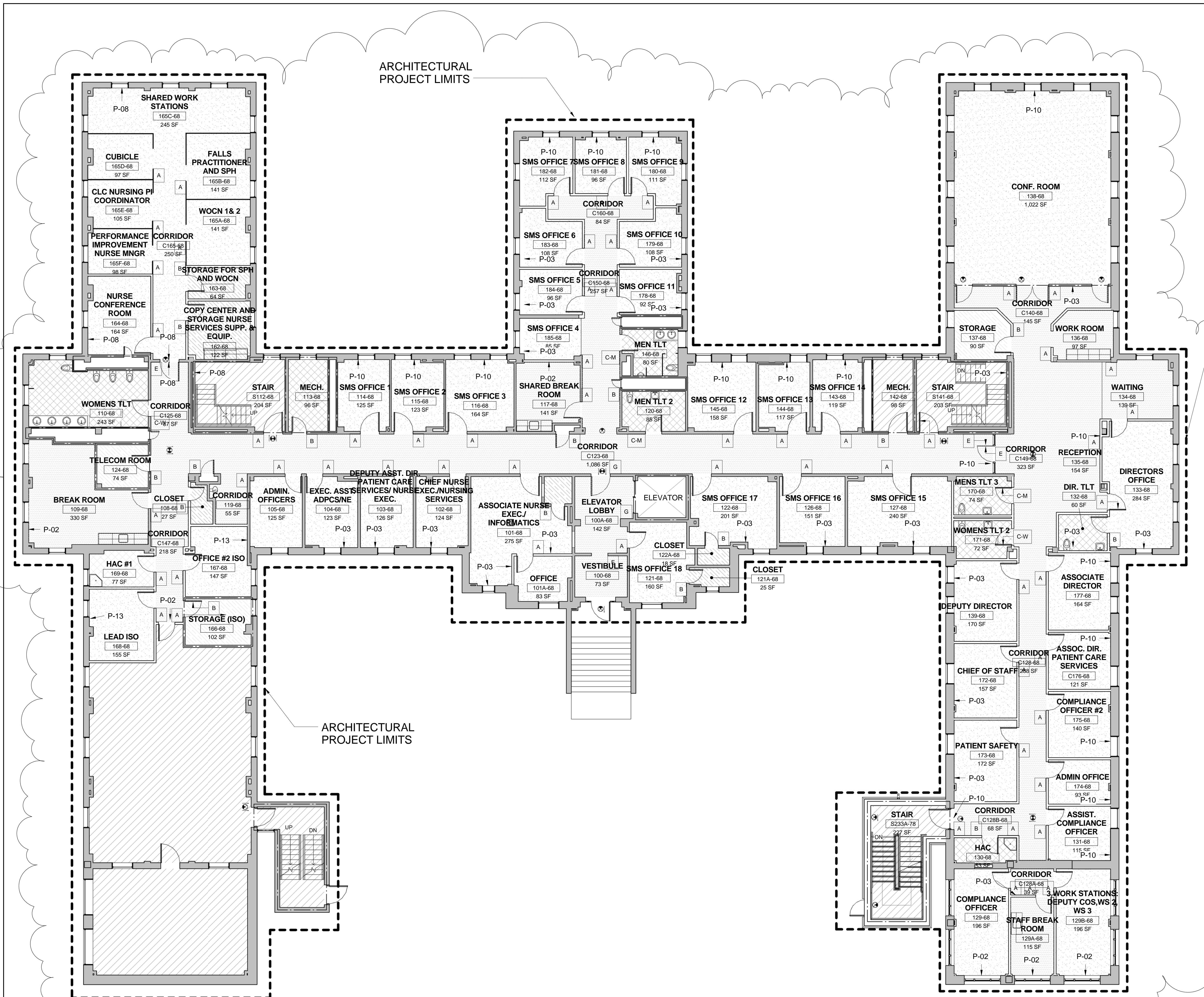


three inches = one foot
one and one half inches = one foot
one inch = one foot
three quarters inch = one foot
one half inch = one foot
three eighths inch = one foot
one quarter inch = one foot
one eighth inch = one foot



BUILDING 68 FIRST FLOOR FINISH & SIGNAGE PLAN
1/8" = 1'-0"
NOTE: SEE SHEET 68.A1104 FOR FINISH SCHEDULE

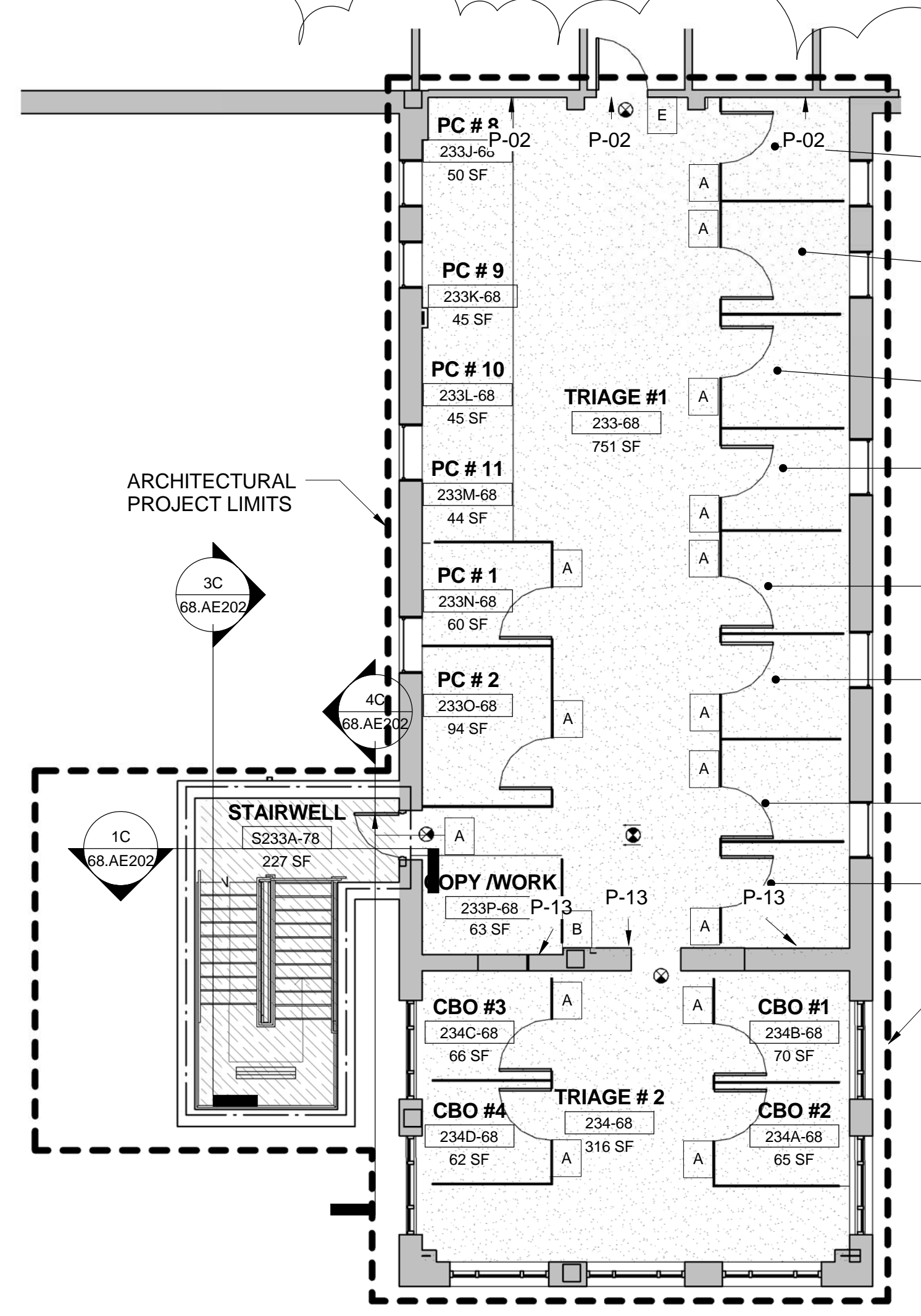
EXISTING CONDITIONS NOTES

GENERAL:
1. DEPICTION OF EXISTING CONDITIONS BASED ON OWNER-FURNISHED DOCUMENTS AND LIMITED FIELD OBSERVATIONS. EXISTING ELEMENTS AND CONDITIONS CONCEALED BY IN-PLACE EQUIPMENT AND FINISHES WERE NOT OBSERVED OR INVESTIGATED. ONCE CUTTING AND SELECTIVE DEMOLITION WORK IS COMPLETE, REPORT ANY CONFLICTS TO GOVERNMENT. THE CONTRACTOR SHALL MAKE ADJUSTMENTS AND/OR ALTERATIONS AS NECESSARY TO INSTALL COMPLETE AND OPERABLE SYSTEMS IN ACCORDANCE WITH THE CODES HAVING JURISDICTION AT NO ADDITIONAL COST TO THE GOVERNMENT.
2. REFER TO CEILING PLANS FOR LOCATION AND EXTENTS OF GWB SOFFITS, FURRINGS, ETC.

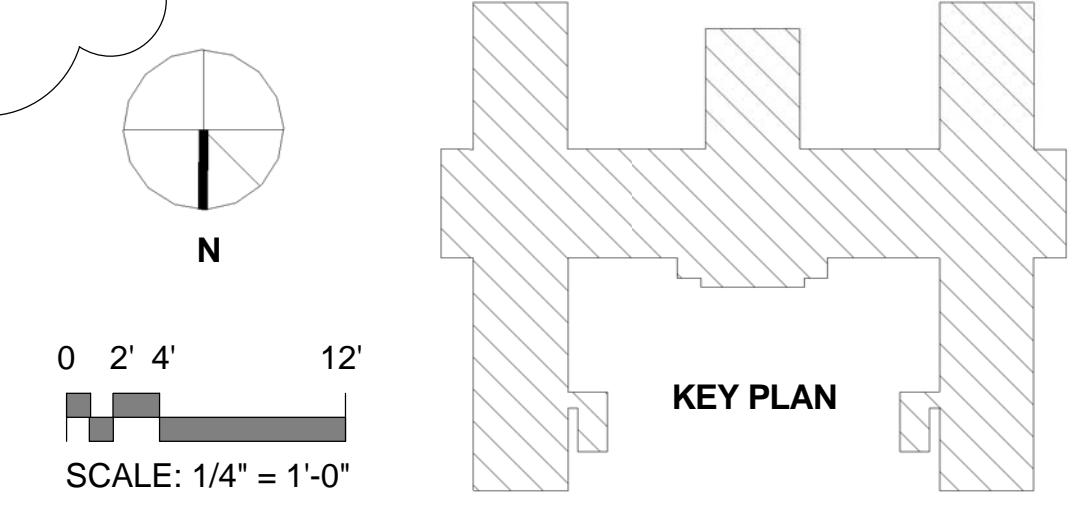
FLOOR FINISH SYMBOL LEGEND

- VCT - VINYL COMPOSITION TILE
- CPT - CARPET
- CT - CERAMIC TILE
- SVT - SOLID VINYL TILE
- RES - RESINOUS FLOORING
- - EXISTING TO REMAIN OR NOT APPLICABLE

ARCHITECTURAL PROJECT LIMITS



SECOND FLOOR - FINISH & SIGNAGE PLAN
1/8" = 1'-0"



CONSTRUCTION DOCUMENTS SUBMISSION FULLY SPRINKLERED

CONSULTANTS:		ARCHITECT/ENGINEERS:		Drawing Title FINISH PLAN - FIRST FLOOR	Project Title NLR EXPANSION OUTPATIENT AND SUPPORT SPACE UNIT	Project Number 598-13-102	OFFICE OF CONSTRUCTION AND FACILITIES MANAGEMENT Department of Veterans Affairs
1 ADDENDUM #1		BES DESIGN/BUILD		Approved: Project Director	Location EJT HEALTHCARE CENTER N. LITTLE ROCK, AR 72114	Building Number 68	
Revisions:		BES DESIGN/BUILD		Date 2015.02.11	Drawn DCS	Checked RW	