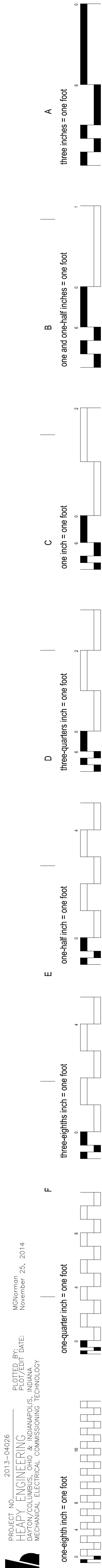




2000 ft
500 m
Cincinnati, Ohio
Map data ©2013 Google - Edit in Google Maps Maker

[illegible]



EXISTING METER SCHEDULE - FLEXIM											
MARK	LOCATION	METER TYPE	SYSTEM AND/OR SERVICE	MODEL NUMBER	SERIAL NUMBER	RE-CALIBRATE METER	DATA ACQUISITION PERIOD (NOTE 1)	SIMULTANEOUS DATA ACQUISITION	SECONDARY DATA ACQUISITION PERIOD (NOTE 1)	SIMULTANEOUS DATA ACQUISITION	DATA ACQUISITION REQUIRED
3	BUILDING 1 SUB-BASEMENT SERVICE ROOM	ULTRASONIC WITH BTU MEASUREMENT	BUILDING 1 CHILLED WATER RISERS 2 & 3	FLUXUS ADM 7407	07406277	YES	ONE CONTIGUOUS MONTH BETWEEN JUL. 1ST AND AUGUST 31ST	24, 27a, 31, 60, 81, 86, 59	ONE CONTIGUOUS MONTH BETWEEN APR. 1ST AND MAY 31ST OR BETWEEN SEP. 1ST AND OCT. 31ST	24, 27a, 31, 60, 81, 86, 59	FLOW (GAL) ENERGY (BTU)
24	BUILDING 15 BASEMENT MECHANICAL ROOM	ULTRASONIC WITH BTU MEASUREMENT	AHU-30 (BUILDING 15) CHILLED WATER	FLUXUS ADM 7407	0748551	YES	ONE CONTIGUOUS MONTH BETWEEN JUL. 1ST AND AUGUST 31ST	3, 27a, 31, 60, 81, 86, 59	ONE CONTIGUOUS MONTH BETWEEN APR. 1ST AND MAY 31ST OR BETWEEN SEP. 1ST AND OCT. 31ST	3, 27a, 31, 60, 81, 86, 59	FLOW (GAL) ENERGY (BTU)
27a	BUILDING 1 SUB-BASEMENT EAST (B-SIDE)	ULTRASONIC WITH BTU MEASUREMENT	BLDG. 1 FOURTH FLOOR PENTHOUSE CHILLED WATER	FLUXUS ADM 7407	-	YES	ONE CONTIGUOUS MONTH BETWEEN JUL. 1ST AND AUGUST 31ST	3, 24, 31, 60, 81, 86, 59	ONE CONTIGUOUS MONTH BETWEEN APR. 1ST AND MAY 31ST OR BETWEEN SEP. 1ST AND OCT. 31ST	3, 24, 31, 60, 81, 86, 59	FLOW (GAL) ENERGY (BTU)
59	BUILDING 8 NORTH	ULTRASONIC WITH BTU MEASUREMENT	CAMPUS SECONDARY CHILLED WATER	FLUXUS ADM 7407	0743220	YES	ONE CONTIGUOUS MONTH BETWEEN JUL. 1ST AND AUGUST 31ST	3, 24, 27a, 31, 60, 81, 86	ONE CONTIGUOUS MONTH BETWEEN APR. 1ST AND MAY 31ST OR BETWEEN SEP. 1ST AND OCT. 31ST	3, 24, 27a, 31, 60, 81, 86	FLOW (GAL) ENERGY (BTU)
60	BUILDING 1 SUB-BASEMENT EAST (B-SIDE)	ULTRASONIC WITH BTU MEASUREMENT	BUILDING 1 CHILLED WATER RISER 1	FLUXUS ADM 7407	07403212	YES	ONE CONTIGUOUS MONTH BETWEEN JUL. 1ST AND AUGUST 31ST	3, 24, 27a, 31, 59, 81, 86	ONE CONTIGUOUS MONTH BETWEEN APR. 1ST AND MAY 31ST OR BETWEEN SEP. 1ST AND OCT. 31ST	3, 24, 27a, 31, 59, 81, 86	FLOW (GAL) ENERGY (BTU)

NOTES:

1 METER TOTAL USAGE SHALL BE RECORDED FOR TIME PERIODS INDICATED IN SCHEDULE. METER USAGE DATA ACQUISITION SHALL NOT OCCUR UNTIL AFTER METER HAS BEEN RE-CALIBRATED (WHERE APPLICABLE) AND REINSTALLED (WHERE RE-CALIBRATION REQUIRES METER REMOVAL). PROVIDE REPORT TO COR, DETAILING RESULTS OF ALL METER DATA ACQUISITION, INCLUDING OUTCOME OF MEETINGS WITH UTILITY PROVIDER, WHERE APPLICABLE. REPORT SHALL INCLUDE SCREEN SHOTS OF METER READINGS AT BEGINNING AND END OF DATA ACQUISITION PERIODS FOR ALL METERS.

EXISTING METER SCHEDULE - ONICON											
MARK	LOCATION	METER TYPE	SYSTEM AND/OR SERVICE	MODEL NUMBER	SERIAL NUMBER	RE-CALIBRATE METER	DATA ACQUISITION PERIOD (NOTE 1)	SIMULTANEOUS DATA ACQUISITION	SECONDARY DATA ACQUISITION PERIOD (NOTE 1)	SIMULTANEOUS DATA ACQUISITION	DATA ACQUISITION REQUIRED
31	BUILDING 13 NORTH	INSERTION TURBINE FLOW WITH BTU MEASUREMENT	CAMPUS SECONDARY CHILLED WATER	F-1110 / SYSTEM 10	170597	YES	ONE CONTIGUOUS MONTH BETWEEN JUL. 1ST AND AUGUST 31ST	3, 24, 27a, 60, 81, 86, 59	ONE CONTIGUOUS MONTH BETWEEN APR. 1ST AND MAY 31ST OR BETWEEN SEP. 1ST AND OCT. 31ST	3, 24, 27a, 60, 81, 86, 59	FLOW (GAL) ENERGY (BTU)
86	BUILDING 2 (CLC) CRAWL SPACE / BASEMENT	INSERTION TURBINE FLOW WITH BTU MEASUREMENT	CLC CHILLED WATER	F-1110 / SYSTEM 10	227402	YES	ONE CONTIGUOUS MONTH BETWEEN JUL. 1ST AND AUGUST 31ST	3, 24, 27a, 31, 60, 81, 59	ONE CONTIGUOUS MONTH BETWEEN APR. 1ST AND MAY 31ST OR BETWEEN SEP. 1ST AND OCT. 31ST	3, 24, 27a, 31, 60, 81, 59	FLOW (GAL) ENERGY (BTU)
100	BUILDING 1 BASEMENT C-SECTION MECH. ROOM	INSERTION TURBINE FLOW WITH BTU MEASUREMENT	AHU-27 CHILLED WATER	F-1220	169977	YES	N/A	N/A	N/A	N/A	N/A

NOTES:

1 METER TOTAL USAGE SHALL BE RECORDED FOR TIME PERIODS INDICATED IN SCHEDULE. METER USAGE DATA ACQUISITION SHALL NOT OCCUR UNTIL AFTER METER HAS BEEN RE-CALIBRATED AND REINSTALLED (WHERE RE-CALIBRATION REQUIRES METER REMOVAL). PROVIDE REPORT TO COR, DETAILING RESULTS OF ALL METER DATA ACQUISITION. REPORT SHALL INCLUDE SCREEN SHOTS OF METER READINGS AT BEGINNING AND END OF DATA ACQUISITION PERIODS FOR ALL METERS.

EXISTING METER SCHEDULE - McCROMETER						
MARK	LOCATION	METER TYPE	SYSTEM AND/OR SERVICE	MODEL NUMBER	SERIAL NUMBER	RE-CALIBRATE METER
112	BUILDING 13	DIFFERENTIAL PRESSURE FLOW METER	CAMPUS MAIN STEAM SUPPLY	DP 014-250-40	E06-01776	(NOTE 1)

NOTES:

1 METER IS OWNED BY THE UNIVERSITY OF CINCINNATI - NO CALIBRATION REQUIRED.

EXISTING METER SCHEDULE - SPIRAX SARCO										
MARK	LOCATION	METER TYPE	SYSTEM AND/OR SERVICE	MODEL NUMBER	SERIAL NUMBER	RE-CALIBRATE METER	DATA ACQUISITION PERIOD (NOTE 2)	SIMULTANEOUS DATA ACQUISITION	SECONDARY DATA ACQUISITION PERIOD (NOTE 2)	DATA ACQUISITION REQUIRED
81	BUILDING 1 GROUNDS MAINTENANCE STORAGE RM.	ULTRASONIC WITH BTU MEASUREMENT	AHU-21 CHILLED WATER	UTM10-ED102	92410	(NOTE 1)	ONE CONTIGUOUS MONTH BETWEEN JUL. 1ST AND AUGUST 31ST	3, 24, 27a, 31, 60, 86, 59	ONE CONTIGUOUS MONTH BETWEEN APR. 1ST AND MAY 31ST OR BETWEEN SEP. 1ST AND OCT. 31ST	3, 24, 27a, 31, 60, 86, 59

NOTES:

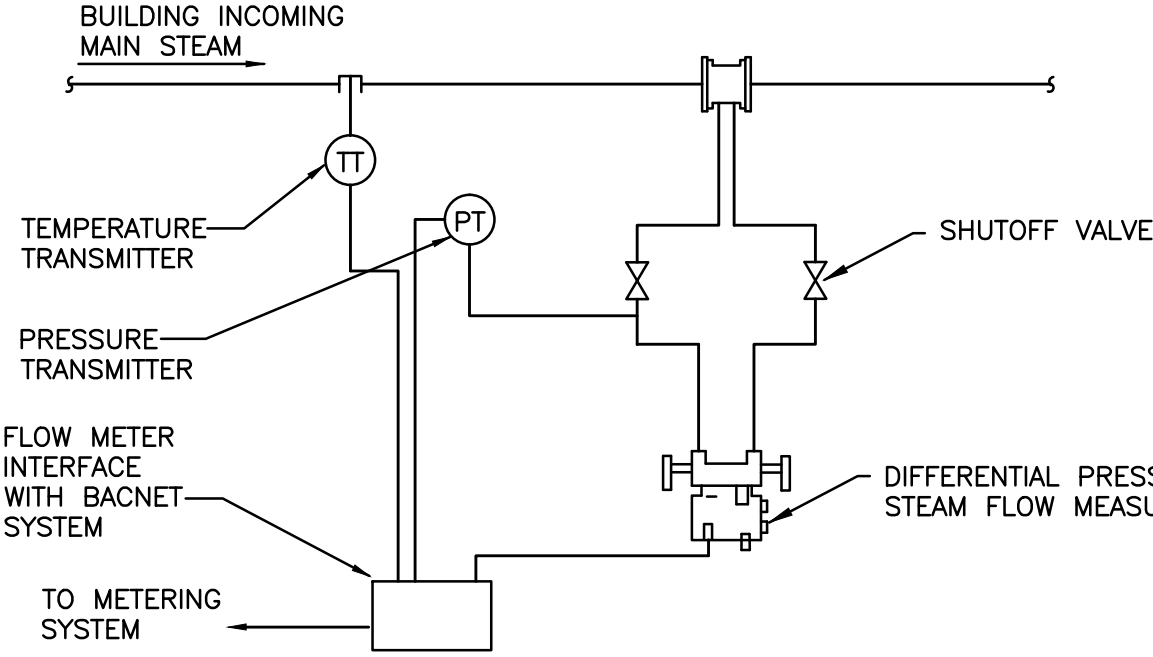
1 METER WAS RECENTLY REPLACED OR RECALIBRATED - RECALIBRATION NOT REQUIRED.

2 METER TOTAL USAGE SHALL BE RECORDED FOR TIME PERIODS INDICATED IN SCHEDULE. PROVIDE REPORT TO COR, DETAILING RESULTS OF ALL METER DATA ACQUISITION. REPORT SHALL INCLUDE SCREEN SHOTS OF METER READINGS AT BEGINNING AND END OF DATA ACQUISITION PERIODS FOR ALL METERS.

NEW INLINE VARIABLE AREA STEAM METER SCHEDULE											
MARK	LOCATION	SHEET	SYSTEM AND/OR SERVICE	MAX. LOAD LB/HR	OUTPUT SIGNAL	LINE PRESSURE PSIG	FLOW RANGE LB/HR	MINIMUM TURNDOWN	METER SIZE IN.	PIPE SIZE	NOTES
1-SSM6	BLDG. 1 SUB-BSMT. SERVICE ROOM	1-10SB	AHU-6-13, 14, 15, 16	1,794	4-20mA AND PULSE	30	33-3,251	100:1	3"	3"	1
3-SSM1	BUILDING 3 SUB-BASEMENT	3-10SB	BUILDING 3 STEAM SUPPLY	1,200	4-20mA AND PULSE	120	14-1,385	100:1	2"	2.5"	1

NOTES:

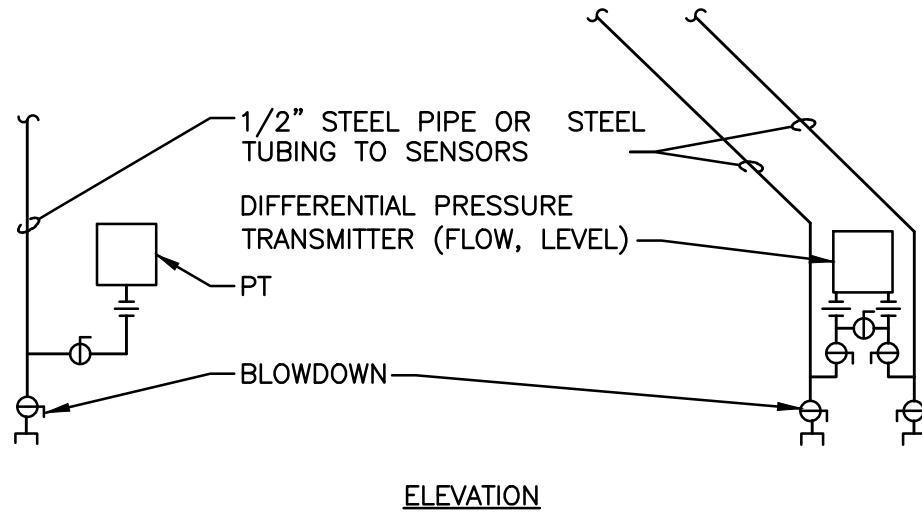
1 CONTRACTOR SHALL COORDINATE POWER & SIGNAL REQUIREMENTS WITH METER MANUFACTURER.



NOTE:

1. MAINTAIN UPSTREAM AND DOWN STREAM DISTANCES RECOMMENDED BY METER MANUFACTURERS

STEAM METER DETAIL



NOTES:

1. INSTALLATION OF SENSORS AND TRANSMITTERS SHALL CONFORM TO RECOMMENDATIONS OF MANUFACTURERS OF TRANSMITTERS.

PRESSURE TRANSMITTER INSTALLATION

GENERAL NOTES

- THESE NOTES APPLY EQUALLY TO THE FULL SET OF DOCUMENTS.
- SITE VISIT(S) SHALL BE AS OUTLINED IN PROJECT SPECIFICATIONS.
- IN ACCORDANCE WITH GENERALLY ACCEPTED CONSTRUCTION PRACTICES, THE CONTRACTOR WILL BE SOLELY AND COMPLETELY RESPONSIBLE FOR THE CONDITIONS ON THE JOB SITE, INCLUDING SAFETY OF ALL PERSONS AND PROPERTY DURING PERFORMANCE OF THE WORK. THIS WILL APPLY CONTINUOUSLY AND NOT BE LIMITED TO NORMAL WORKING HOURS. SEE SPECIFICATIONS FOR MORE SPECIFIC DETAILS ON RESPONSIBILITIES.
- ALL WORK MUST BE COORDINATED WITH THE CONTRACTING OFFICER AND C.O.R. TO MAINTAIN OPERATION OF THE EXISTING FACILITY.
- EACH CONTRACTOR SHALL COORDINATE HIS WORK WITH THE WORK OF OTHERS. HE SHALL KEEP HIMSELF INFORMED OF THE PROGRESS AND DETAIL DEVELOPMENT OF THE WORK OF OTHERS AND SHALL BE RESPONSIBLE FOR COORDINATING AND EXPEDITING HIS WORK WITH OTHERS SO THAT THE PROGRESS OF THE TOTAL WORK SHALL BE KEPT ON SCHEDULE.
- ALL WORK SHALL BE PERFORMED IN COMPLETE COMPLIANCE WITH ALL GOVERNING CODES AND STANDARDS.
- EXISTING CONDITIONS SHOWN HAVE BEEN BASED UPON VISUAL OBSERVATION AND/OR AVAILABLE DRAWING INFORMATION, AND MAY BE AT VARIANCE WITH ACTUAL WORK IN PLACE. THE CONTRACTOR SHALL TAKE ALL NECESSARY FIELD MEASUREMENTS AND FIELD VERIFY ALL CONDITIONS AFFECTING THE EXECUTION OF THE WORK. ANY DISCREPANCIES BETWEEN EXISTING CONDITIONS AND THE WORK SHOWN ON THE CONTRACT DOCUMENTS WHICH MAY IMPACT THE PROGRESS OF THE WORK SHALL BE BROUGHT TO THE ATTENTION OF THE CONTRACTING OFFICER IN WRITING FOR RESOLUTION BEFORE PROCEEDING WITH THE WORK.
- EACH CONTRACTOR AND/OR TRADE, FITTING OR PLACING HIS WORK INTO OR ON THE WORK OF OTHERS DOES SO WITH THE UNDERSTANDING THAT THE INSTALLATION OF HIS WORK CONSTITUTES HIS ACCEPTANCE OF THE SUITABILITY OF THE WORK IN PLACE. IF THE WORK OF OTHERS IS NOT ACCEPTABLE, HE SHALL NOTIFY THE C.O.R. AND SUCH WORK SHALL BE CORRECTED. ANY NEW WORK INSTALLED IN UNSUITABLE EXISTING WORK SHALL BE THE RESPONSIBILITY OF THE CONTRACTOR OR TRADE INSTALLING THE NEW WORK. NO CLAIMS FOR ADDITIONAL COMPENSATION FOR CORRECTING WORK INSTALLED IN UNSUITABLE EXISTING CONDITIONS WILL BE CONSIDERED.
- ALL PRESSURES LISTED ARE GAGE PRESSURE UNLESS OTHERWISE NOTED.
- ALL CUTTING AND PATCHING REQUIRED FOR THIS PROJECT SHALL BE INCLUDED IN THE CONTRACT. REFINISH ANY SURFACE DISTURBED UNDER THIS WORK TO MATCH EXISTING.
- ANY REMOVED EQUIPMENT SHALL BE TURNED OVER TO THE VA. ITEMS NOT DESIRED BY THE VA SHALL BE REMOVED FROM THE PREMISES AND DISPOSED OF PROPERLY BY THE CONTRACTOR.
- FIELD VERIFY EXISTING CONDITIONS, INCLUDING DUCT, PIPE AND EQUIPMENT SIZES, SERVICES AND LOCATIONS PRIOR TO PERFORMING WORK.
- WHERE EXISTING HVAC UTILITIES IN SERVICE WILL BE DISRUPTED DURING THE CONSTRUCTION OF THIS PROJECT, THIS WORK SHALL BE PERFORMED ON WEEKENDS OR WEEK NIGHTS. DOWNTIME SHALL BE KEPT TO A MINIMUM, AND SHALL BE COORDINATED AND SCHEDULED WELL IN ADVANCE WITH COR.
- ALL SYSTEM SHUT-DOWN REQUESTS SHALL BE PRESENTED TO COR 21 DAYS PRIOR TO REQUESTED SHUT-DOWN.

INDEX OF DRAWINGS	
SHEET	DESCRIPTION
C000	COVER SHEET
M601	INDEX, SCHEDULES, DETAILS, GENERAL NOTES
1-10SB	BUILDING 1 SUB-BASEMENT FLOOR PLAN
1-10B	BUILDING 1 BASEMENT FLOOR PLAN
2-10B	BUILDING 2 BASEMENT FLOOR PLAN
3-10B	BUILDING 3 BASEMENT FLOOR PLAN
8-101	BUILDING 8 BASEMENT FLOOR PLAN, BUILDING 13 FIRST FLOOR PLAN
15-10B	BUILDING 15 BASEMENT FLOOR PLAN

Revisions

Date

CONSULTANTS:

STATE OF OHIO
GARY S. EODICE
E-52755
REGISTERED PROFESSIONAL ENGINEER

ARCHITECT/ENGINEERS:

Heapy Engineering

MEP Design Technology Planning Commissioning Energy

Nationally Recognized Leader in Sustainability

1400 W Dorothy Lane, Dayton, OH 45409-1310

Ph 937-224-0861 Fax 937-224-5777 www.heapy.com

PROJECT NO. 2013-04026

FIRM LICENSE: 01528

Drawing Title

INDEX, SCHEDULES, DETAILS, GENERAL NOTES

Approved: Project Director

Project Title

CALIBRATE AND INSTALL ADDITIONAL METERS

Location

Cincinnati, Ohio

Date

11/26/2014

Checked

DLE

Drawn

JAC

VA Project No. 539-15-204

Building Number

Drawing Number

M601

Dwg. of

xx

Office of Construction and Facilities Management

Department of Veterans Affairs

PROJECT NO. 2013-04026
HEAPY ENGINEERING
DAYTON/COLUMBUS, OHIO & INDIANAPOLIS, INDIANA
MECHANICAL ELECTRICAL COMMISSIONING TECHNOLOGY

DATE: 11/26/2014
PLOT FILED DATE: 11/26/2014
NOTATION: 25, 2014

one-eighth inch = one foot
one-quarter inch = one foot
three-eighths inch = one foot
one-half inch = one foot
three-quarters inch = one foot
one inch = one foot
one and one-half inches = one foot
three inches = one foot

1

2

3

4

5

6

7

8

9

1

2

3

4

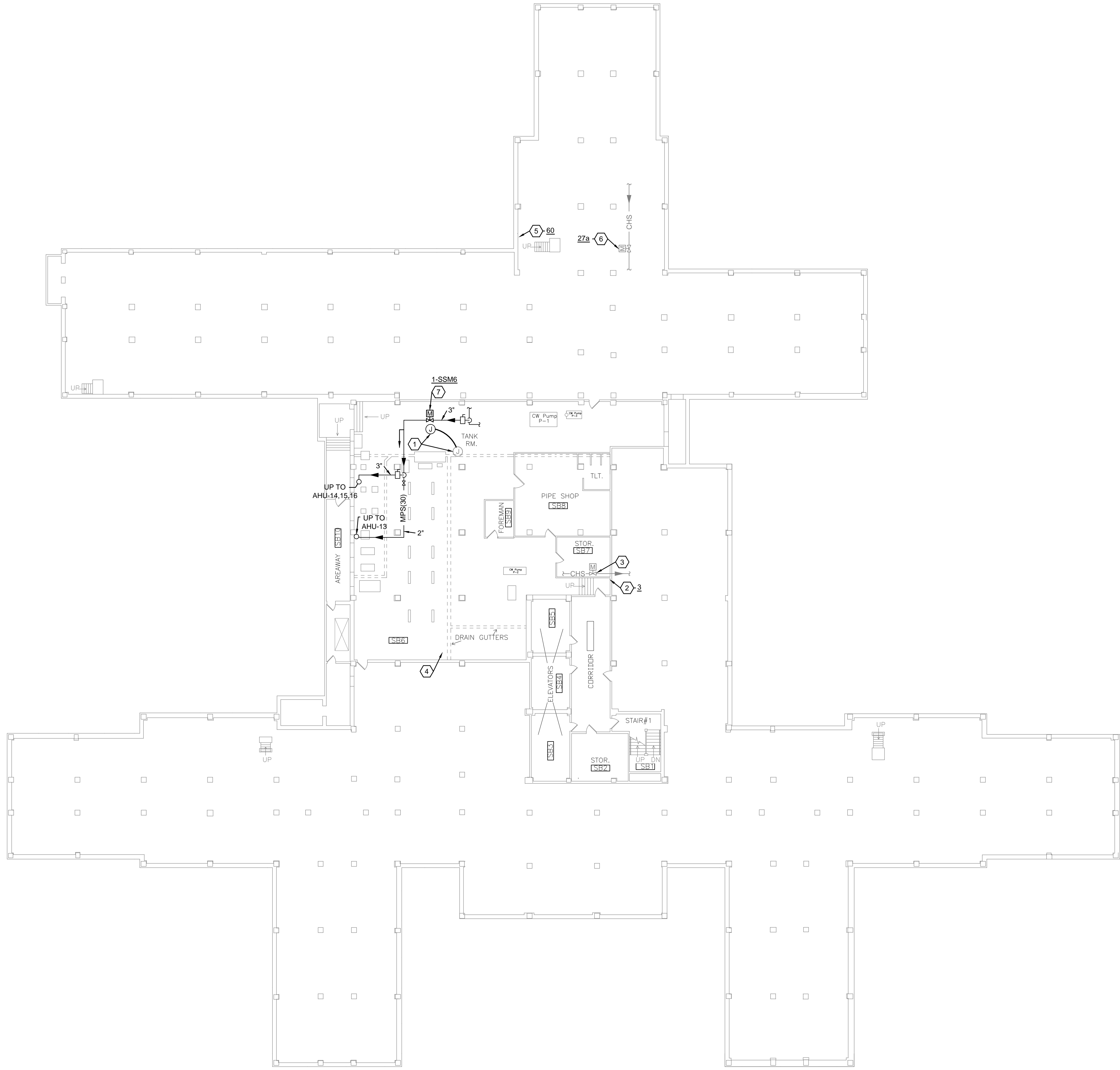
5

6

7

8

9



SUB BASEMENT FLOOR PLAN
SCALE: 1/16"=1'-0"

GENERAL NOTES

- A REFER TO SHEET MEP601 FOR METER SCHEDULES, DETAILS, AND GENERAL NOTES.

NOTES

- CONNECT TO EXISTING 120V STEAM METER CIRCUIT AS SHOWN, AND EXTEND TO PROVIDE 120V POWER CONNECTION TO NEW STEAM METER. RUN 2-#12, 1-#12 GRD. IN 0.75" CONDUIT.
- EXISTING FLOW/BTUH METER FOR CHILLED WATER RISERS 2 & 3. METER NUMBER AS INDICATED. METER SHALL BE RECALIBRATED BY FACTORY TRAINED PERSONNEL OF METER MANUFACTURER. ONCE CALIBRATION IS COMPLETE, ACQUIRE METER DATA AS SCHEDULED ON SHEET MEP601. SUM OF FLOW AND BTUH READINGS FROM SUBMETERS 3, 24, 27& 60, 51 & 86 SHALL BE COMPARED TO FLOW AND BTUH READING FROM CAMPUS METER 59 FOR THE SAME TIME PERIOD.
- APPROXIMATE LOCATION OF EXISTING SENSING ELEMENTS FOR METER #3, CHILLED WATER RISER #2.
- APPROXIMATE LOCATION OF EXISTING SENSING ELEMENTS FOR METER #3, CHILLED WATER RISER #3.
- EXISTING FLOW/BTUH METER FOR CHILLED WATER RISER #1. METER NUMBER AS INDICATED. METER SHALL BE RECALIBRATED BY FACTORY TRAINED PERSONNEL OF METER MANUFACTURER. ONCE CALIBRATION IS COMPLETE, ACQUIRE METER DATA AS SCHEDULED ON SHEET MEP601. SUM OF FLOW AND BTUH READINGS FROM SUBMETERS 3, 24, 27& 60, 51 & 86 SHALL BE COMPARED TO FLOW AND BTUH READING FROM CAMPUS METER 59 FOR THE SAME TIME PERIOD.
- EXISTING FLOW/BTUH METER FOR 4TH FLOOR PENTHOUSE. METER NUMBER AS INDICATED. METER SHALL BE RECALIBRATED BY FACTORY TRAINED PERSONNEL OF METER MANUFACTURER. ONCE CALIBRATION IS COMPLETE, ACQUIRE METER DATA AS SCHEDULED ON SHEET MEP601. SUM OF FLOW AND BTUH READINGS FROM SUBMETERS 3, 24, 27& 60, 51 & 86 SHALL BE COMPARED TO FLOW AND BTUH READING FROM CAMPUS METER 59 FOR THE SAME TIME PERIOD.
- PROVIDE NEW INLINE VARIABLE AREA METER IN EXISTING MEDIUM PRESSURE STEAM SUPPLY PIPE. REFER TO SCHEDULE AND DETAIL. INTEGRATE METER INTO BAS THROUGH NEAREST EXISTING DDC PANEL IN SERVICE ROOM, FOR REMOTE MONITORING/TRENDING OF INSTANTANEOUS AND TOTALIZED STEAM FLOW, AND PROVIDE GRAPHICS AT ECC.

Revisions

Date

CONSULTANTS:

ARCHITECT/ENGINEERS:

STATE OF OHIO

GARY S. EODICE
E-52755

REGISTERED
PROFESSIONAL ENGINEER

Heapy Engineering

MEP Design Technology Planning Commissioning Energy

Nationally Recognized Leader in Sustainability

1400 W Dorothy Lane, Dayton, OH 45409-1310
Ph 937-224-0861 Fax 937-224-5777 www.heapy.com

PROJECT NO. 2013-04026 FIRM LICENSE: 01528

Drawing Title

BUILDING 1 SUB-BASEMENT FLOOR PLAN

Approved: Project Director

Project Title

CALIBRATE AND INSTALL ADDITIONAL METERS

Location

Cincinnati, Ohio

Date

11/26/2014

Checked

DLE

Drawn

JAC

VA Project No. 539-15-204

Building Number

1

Drawing Number

1-10SB

Dwg. of

xx

Office of Construction and Facilities Management

Department of Veterans Affairs

1

2

3

4

5

6

7

8

9

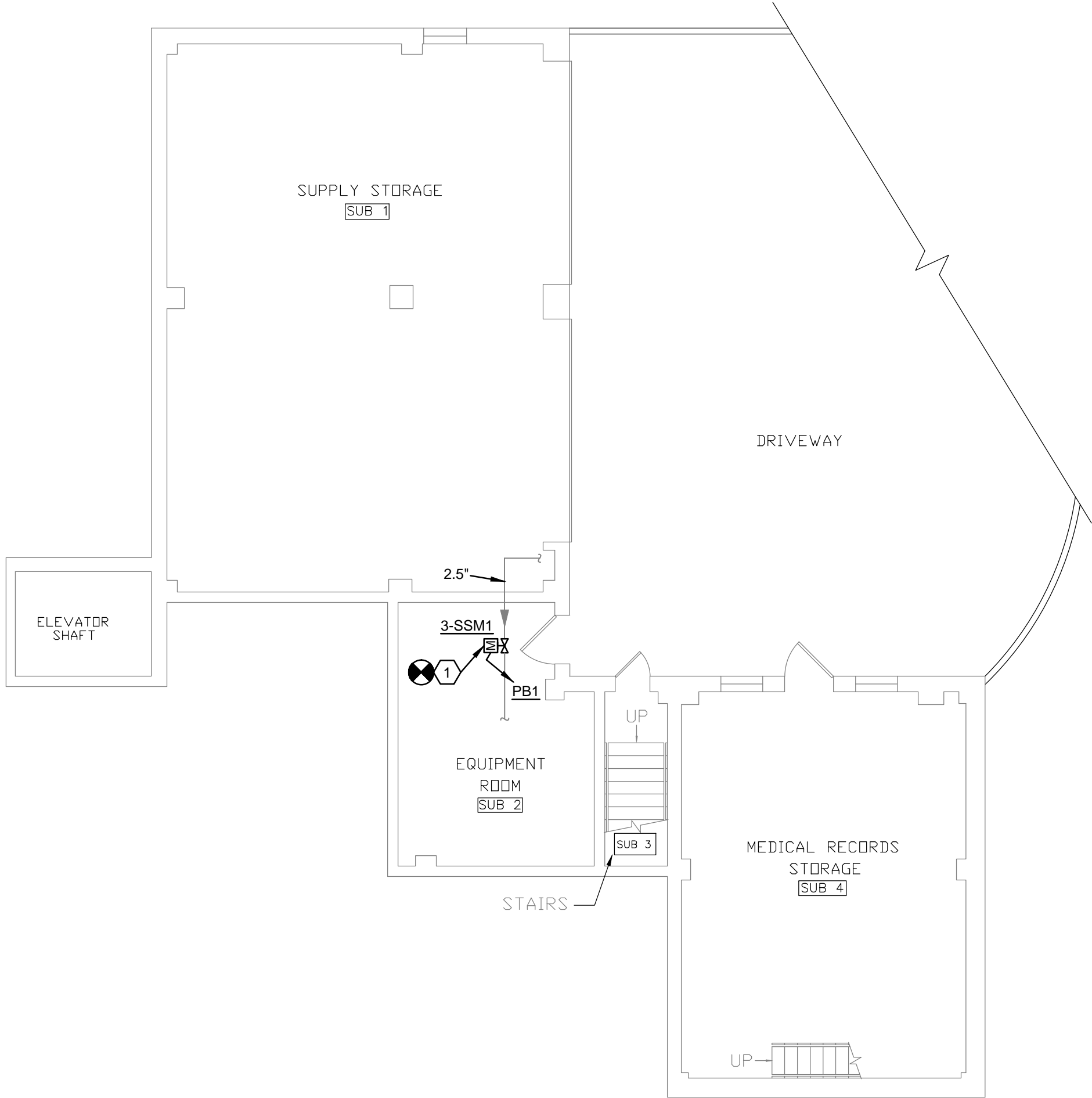
ALL WORK SHOWN ON THIS SHEET SHALL BE DELETED UNDER DEDUCT ALTERNATE #1.

GENERAL NOTES

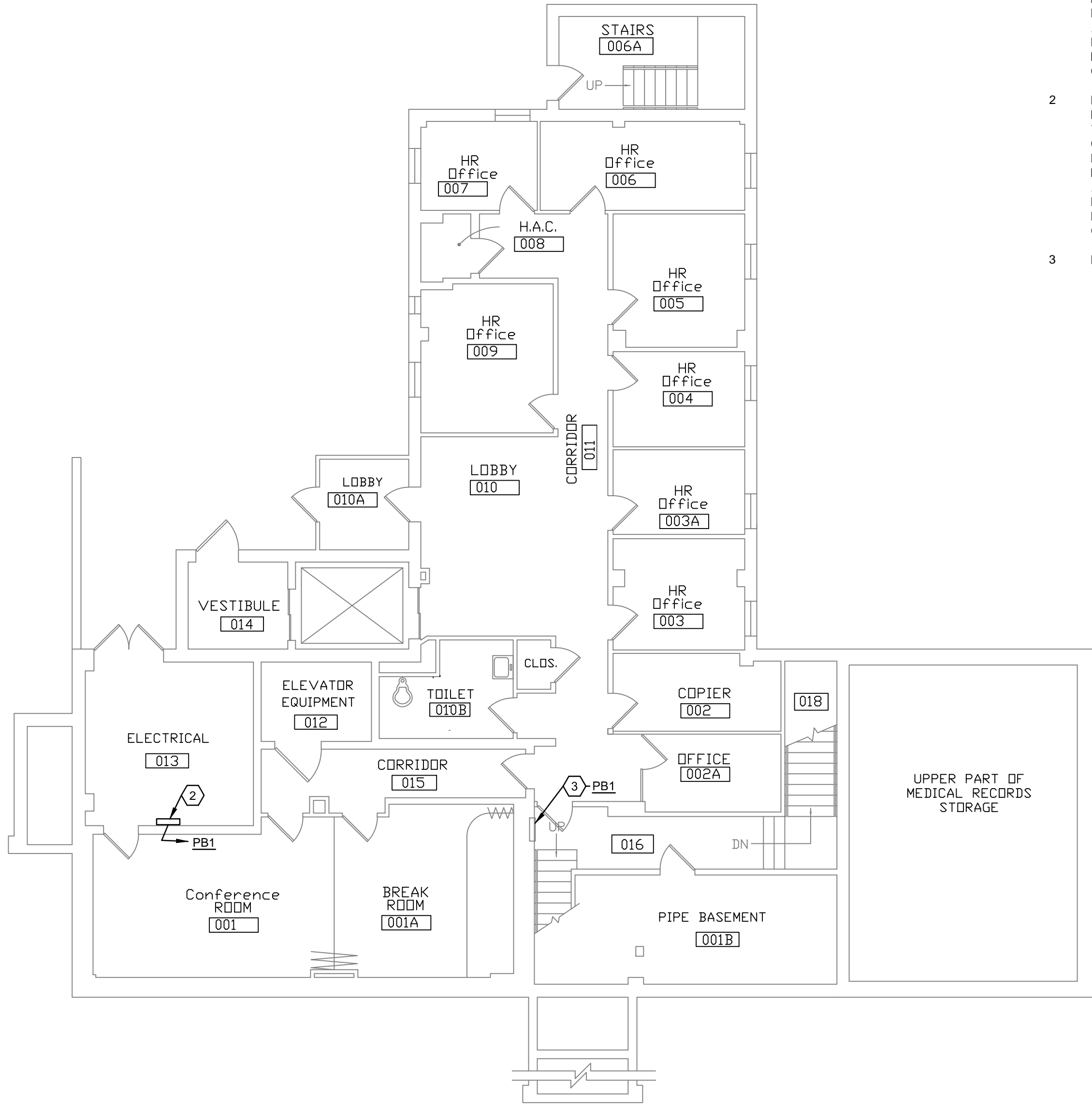
A REFER TO SHEET MEP601 FOR METER SCHEDULES, DETAILS, AND GENERAL NOTES.

NOTES

1. PROVIDE NEW INLINE VARIABLE AREA METER IN EXISTING HIGH PRESSURE STEAM SUPPLY PIPE. REFER TO SCHEDULE 400. INTEGRATE METER INTO GAS THROUGH NEW NETWORK AREA PANEL IN BASEMENT ELECTRICAL ROOM. FOR REMOTE MONITORING/TRENDING OF INSTANTANEOUS AND TOTALIZED STEAM FLOW, AND PROVIDE GRAPHICS AS FOLLOWS: EXISTING 20A/P BREAKER IN EXISTING BRANCH CIRCUIT PANEL AND RUN 2-1/2 IN. x 1/2" DR. IN 0.75' CONDUIT.
2. PROVIDE NETWORK AREA CONTROL PANEL FOR INTEGRATION OF NEW STEAM METER. MOUNT PANEL ON WALL IN EXISTING ELECTRICAL ROOM. EXTEND AND CONNECT GAS METER SIGNAL CABLE FROM GAS TO EXISTING VA NETWORK SWITCH IN THIS ROOM. PROVIDE A MINIMUM 21 DAYS NOTICE TO CTR. IN ADVANCE OF EXISTING AND CONDUIT WORK. PROVIDE IP ADDRESS AND FOR IP ADDRESS. UTILIZE EXISTING 20A/P BREAKER IN EXISTING BRANCH CIRCUIT PANEL AND RUN 2-1/2 IN. x 1/2" DR. IN 0.75' CONDUIT.
3. EXISTING SQUARE-D PANEL TO REMAIN.



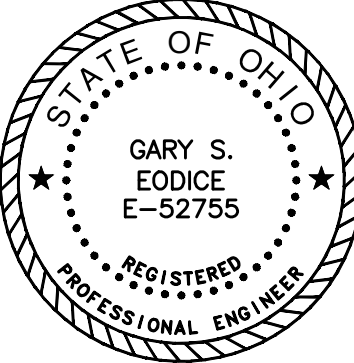
PARTIAL SUB-BASEMENT FLOOR PLAN
SCALE: 1/8"=1'-0"




PARTIAL BASEMENT FLOOR PLAN
SCALE: 1/8"=1'-0"

[illegible]

CONSULTANTS:



ARCHITECT/ENGINEERS:



Heapy Engineering
MEP Design Technology Planning Commissioning Energy
Nationally Recognized Leader in Sustainability
1400 W Dorothy Lane, Dayton, OH 45409-1310
Ph 937-224-0861 Fax 937-224-5777 www.heapy.com

PROJECT NO. 2013-04026 FIRM LICENSE: 01528

Drawing Title

BUILDING 3 FLOOR PLANS

Approved: Project Director

Project Title CALIBRATE AND INSTALL ADDITIONAL METERS			VA Project No. 539-15-204		
Location Cincinnati, Ohio			Building Number 3		
Date 11/26/2014	Checked DLE	Drawn JAC	Drawing Number 3-10B		
			Dwg. of xx		

Building Number
3

Down of X:

Office of
Construction
and Facilities
Management

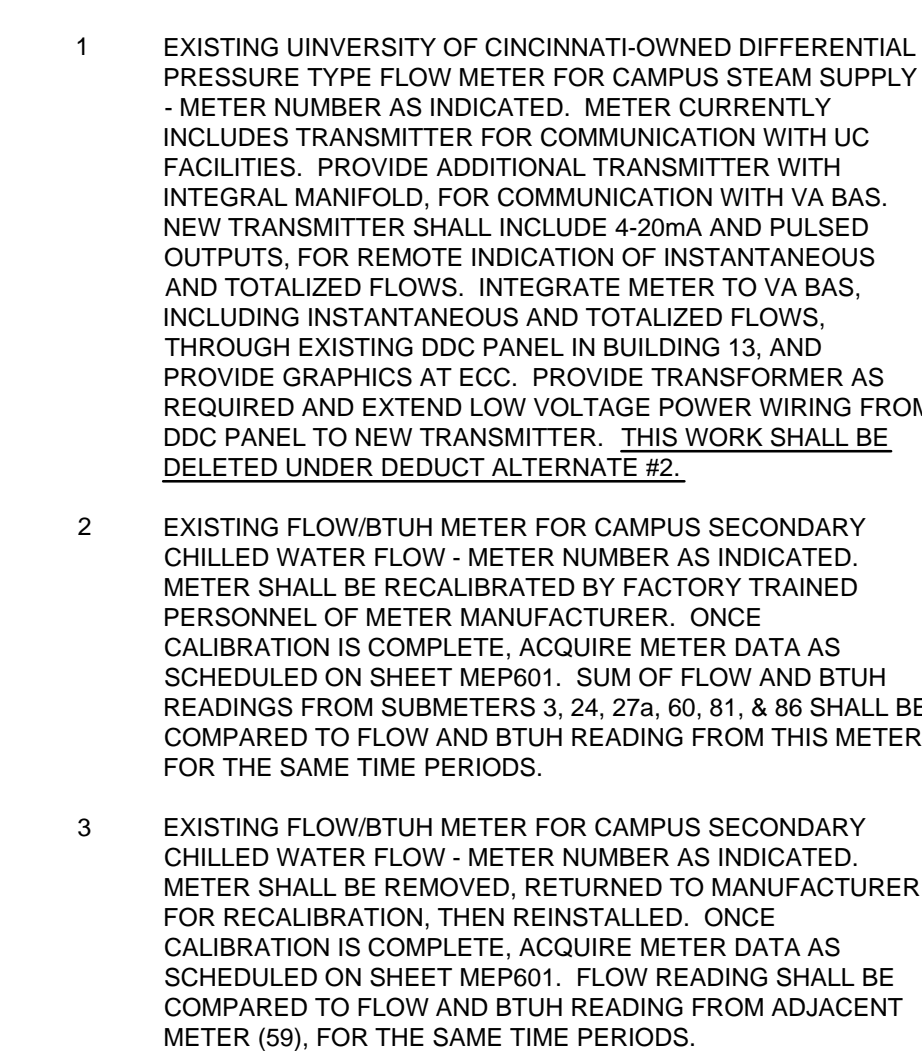
 Department of
Veterans Affairs

Department of
Veterans Affairs

PROJECT NO. 2013-04026
HEAPY ENGINEERING
 DAYTON/COLUMBUS, OHIO & INDIANAPOLIS, INDIANA
 MECHANICAL ELECTRICAL COMMISSIONING TECHNOLOGY

PLOTTED BY: MGNorman
 PLOT/EDIT DATE: November 25, 2014





--	--	--	--	--	--	--	--	--	--	--	--	--	--	--	--	--	--	--	--	--	--	--	--	--	--	--	--	--	--	--	--	--	--	--	--	--	--	--	--	--	--	--	--	--	--	--	--	--	--	--	--	--	--	--	--	--	--	--	--	--	--	--	--	--	--	--	--	--	--	--	--	--	--	--	--	--	--	--	--	--	--	--	--	--	--	--	--	--	--	--	--	--	--	--	--	--	--	--	--	--	--	--	--	--	--	--	--	--	--	--	--	--	--	--	--	--	--	--	--	--	--	--	--	--	--	--	--	--	--	--	--	--	--	--	--	--	--	--	--	--	--	--	--	--	--	--	--	--	--	--	--	--	--	--	--	--	--	--	--	--	--	--	--	--	--	--	--	--	--	--	--	--	--	--	--	--	--	--	--	--	--	--	--	--	--	--	--	--	--	--	--	--	--	--	--	--	--	--	--	--	--	--	--	--	--	--	--	--	--	--	--	--	--	--	--	--	--	--	--	--	--	--	--	--	--	--	--	--	--	--	--	--	--	--	--	--	--	--	--	--	--	--	--	--	--	--	--	--	--	--	--	--	--	--	--	--	--	--	--	--	--	--	--	--	--	--	--	--	--	--	--	--	--	--	--	--	--	--	--	--	--	--	--	--	--	--	--	--	--	--	--	--	--	--	--	--	--	--	--	--	--	--	--	--	--	--	--	--	--	--	--	--	--	--	--	--	--	--	--	--	--	--	--	--	--	--	--	--	--	--	--	--	--	--	--	--	--	--	--	--	--	--	--	--	--	--	--	--	--	--	--	--	--	--	--	--	--	--	--	--	--	--	--	--	--	--	--	--	--	--	--	--	--	--	--	--	--	--	--	--	--	--	--	--	--	--	--	--	--	--	--	--	--	--	--	--	--	--	--	--	--	--	--	--	--	--	--	--	--	--	--	--	--	--	--	--	--	--	--	--	--	--	--	--	--	--	--	--	--	--	--	--	--	--	--	--	--	--	--	--	--	--	--	--	--	--	--	--	--	--	--	--	--	--	--	--	--	--	--	--	--	--	--	--	--	--	--	--	--	--	--	--	--	--	--	--	--	--	--	--	--	--	--	--	--	--	--	--	--	--	--	--	--	--	--	--	--	--	--	--	--	--	--	--	--	--	--	--	--	--	--	--	--	--	--	--	--	--	--	--	--	--	--	--	--	--	--	--	--	--	--	--	--	--	--	--	--	--	--	--	--	--	--	--	--	--	--	--	--	--	--	--	--	--	--	--	--	--	--	--	--	--	--	--	--	--	--	--	--	--	--	--	--	--	--	--	--	--	--	--	--	--	--	--	--	--	--	--	--	--	--	--	--	--	--	--	--	--	--	--	--	--	--	--	--	--	--	--	--	--	--	--	--	--	--	--	--	--	--	--	--	--	--	--	--	--	--	--	--	--	--	--	--	--	--	--	--	--	--	--	--	--	--	--	--	--	--	--	--	--	--	--	--	--	--	--	--	--	--	--	--	--	--	--	--	--	--	--	--	--	--	--	--	--	--	--	--	--	--	--	--	--	--	--	--	--	--	--	--	--	--	--	--	--	--	--	--	--	--	--	--	--	--	--	--	--	--	--	--	--	--	--	--	--	--	--	--	--	--	--	--	--	--	--	--	--	--	--	--	--	--	--	--	--	--	--	--	--	--	--	--	--	--	--	--	--	--	--	--	--	--	--	--	--	--	--	--	--	--	--	--	--	--	--	--	--	--	--	--	--	--	--	--	--	--	--	--	--	--	--	--	--	--	--	--	--	--	--	--	--	--	--	--	--	--	--	--	--	--	--	--	--	--	--	--	--	--	--	--	--	--	--	--	--	--	--	--	--	--	--	--	--	--	--	--	--	--	--	--	--	--	--	--	--	--	--	--	--	--	--	--	--	--	--	--	--	--	--	--	--	--	--	--	--	--	--	--	--	--	--	--	--	--	--	--	--	--	--	--	--	--	--	--	--	--	--	--	--	--	--	--	--	--	--	--	--	--	--	--	--	--	--	--	--	--	--	--	--	--	--	--	--	--	--	--	--	--	--	--	--	--	--	--	--	--	--	--	--	--	--	--	--	--	--	--	--	--	--	--	--	--	--	--	--	--	--	--	--	--	--	--	--	--	--	--	--	--	--	--	--	--	--	--	--	--	--	--	--	--	--	--	--	--	--	--	--	--	--	--	--	--	--	--	--	--	--	--	--	--	--	--	--	--	--	--	--	--	--	--	--	--	--	--	--	--	--	--	--	--	--	--	--	--	--	--	--	--	--	--	--	--	--	--	--	--	--	--	--	--	--	--	--	--	--	--	--	--	--	--	--	--	--	--	--	--	--	--	--	--	--	--	--	--	--	--	--	--	--	--	--	--	--	--	--	--	--	--	--	--	--	--	--	--	--	--	--	--	--	--	--	--	--	--	--	--	--	--	--	--	--	--	--	--	--	--	--	--	--	--	--	--	--	--	--	--	--	--	--	--	--	--	--	--	--	--	--	--	--	--	--	--	--	--	--	--	--	--	--	--	--	--	--	--	--	--	--	--	--	--	--	--	--	--	--	--	--	--	--	--	--	--	--	--	--	--	--	--	--	--	--	--	--	--	--	--	--	--	--	--	--	--	--	--	--	--	--	--	--	--	--	--	--	--	--	--	--	--	--	--	--	--	--	--	--	--	--	--	--	--	--	--	--	--	--	--	--	--	--	--	--	--	--	--	--	--	--	--	--	--	--	--	--	--	--	--	--	--	--	--	--	--	--	--	--	--	--	--	--	--	--	--	--	--	--	--	--	--	--	--	--	--	--	--	--	--	--	--	--	--	--	--	--	--	--	--	--	--	--	--	--	--	--	--	--	--	--	--	--	--	--	--	--	--	--	--	--	--	--	--	--	--	--	--	--	--	--	--	--	--	--	--	--	--	--	--	--	--	--	--	--	--	--	--	--	--	--	--	--	--	--	--	--	--	--	--	--	--	--	--	--	--	--	--	--	--	--	--	--	--	--	--	--	--	--	--	--	--	--	--	--	--	--	--	--	--	--	--	--	--	--	--	--	--	--	--	--	--	--	--	--	--	--	--	--

PROJECT NO. 2013-04026
HEAPY ENGINEERING
DAYTON/COLUMBUS, OHIO & INDIANAPOLIS, INDIANA
MECHANICAL ELECTRICAL COMMISSIONING TECHNOLOGY

PLotted By: M. Norman
PLOT/ED DATE: November 25, 2014

three eighths inch = one foot

one quarter inch = one foot

three eighths inch = one foot

one half inch = one foot

one quarter inch = one foot

three quarters inch = one foot

one inch = one foot

one and one half inches = one foot

three inches = one foot

123456789

1

2

3

4

5

6

7

8

9

Revisions

Date

CONSULTANTS:

STATE OF OHIO
GARY S. EODICE
E-52755
REGISTERED
PROFESSIONAL ENGINEER

ARCHITECT/ENGINEERS:

Heapy Engineering

MEP Design Technology Planning Commissioning Energy

Nationally Recognized Leader in Sustainability

1400 W Dorothy Lane, Dayton, OH 45409-1310
Ph 937-224-0861 Fax 937-224-5777 www.heapy.com

PROJECT NO. 2013-04026

FIRM LICENSE: 01528

Drawing Title

BUILDING 15 BASEMENT FLOOR PLAN

Approved: Project Director

Project Title

CALIBRATE AND INSTALL
ADDITIONAL METERS

Location

Cincinnati, Ohio

Date

11/26/2014

Checked

DLE

Drawn

JAC

VA Project No. 539-15-204

Building Number

15

Drawing Number

15-10B

Dwg. of

xx

Office of
Construction
and Facilities
Management

Department of
Veterans Affairs

BASEMENT FLOOR PLAN

SCALE: 1/8"=1'-0"

MECHANICAL ROOM
B-01

ELEV. EQ. RM.
B-03

ELEVATOR
KIDDR

HEAT RECLAIM

PREHEAT CIRCULATE PUMP

CORRIDOR
B-08

AIR COMP
B-06

AIR COMP.

GLASS WASH. & STILL
B-04

RESEARCH STORAGE
B-04a

STAIR #1
B-07

UP

STOR.
B-05a

AREA WAY

A/C SHOP OFFICE
B-05

TRANSFORMER VAULT
B-02

FIRE PUMP CTR.

FIRE PUMP

AIR COMP.

VACUUM PUMP

COND-ENSATE PUMP

STORAGE

AIR INTAKE SHAFT

1 24

50

50

GENERAL NOTES

A REFER TO SHEET MEP001 FOR METER SCHEDULES, DETAILS, AND GENERAL NOTES.

NOTES

1 EXISTING FLOW/BTUH METER FOR AHU-30 CHILLED WATER - METER NUMBER AS INDICATED. METER SHALL BE RECALIBRATED BY FACTORY TRAINED PERSONNEL OF METER MANUFACTURER. ONCE CALIBRATION IS COMPLETE, ACQUIRE METER DATA AS SCHEDULED ON SHEET MEP001. SUM OF FLOW AND BTUH READINGS FROM SUBMETERS 3, 24, 27a, 60, 81, & 86 SHALL BE COMPARED TO FLOW AND BTUH READING FROM CAMPUS METER 59 FOR THE SAME TIME PERIOD.