

3" = 1'-0"
0 1 2 3 4 5 6 7 8 9 10 11 12

1 1/2" = 1'-0"
0 2 4 6 8 10 12

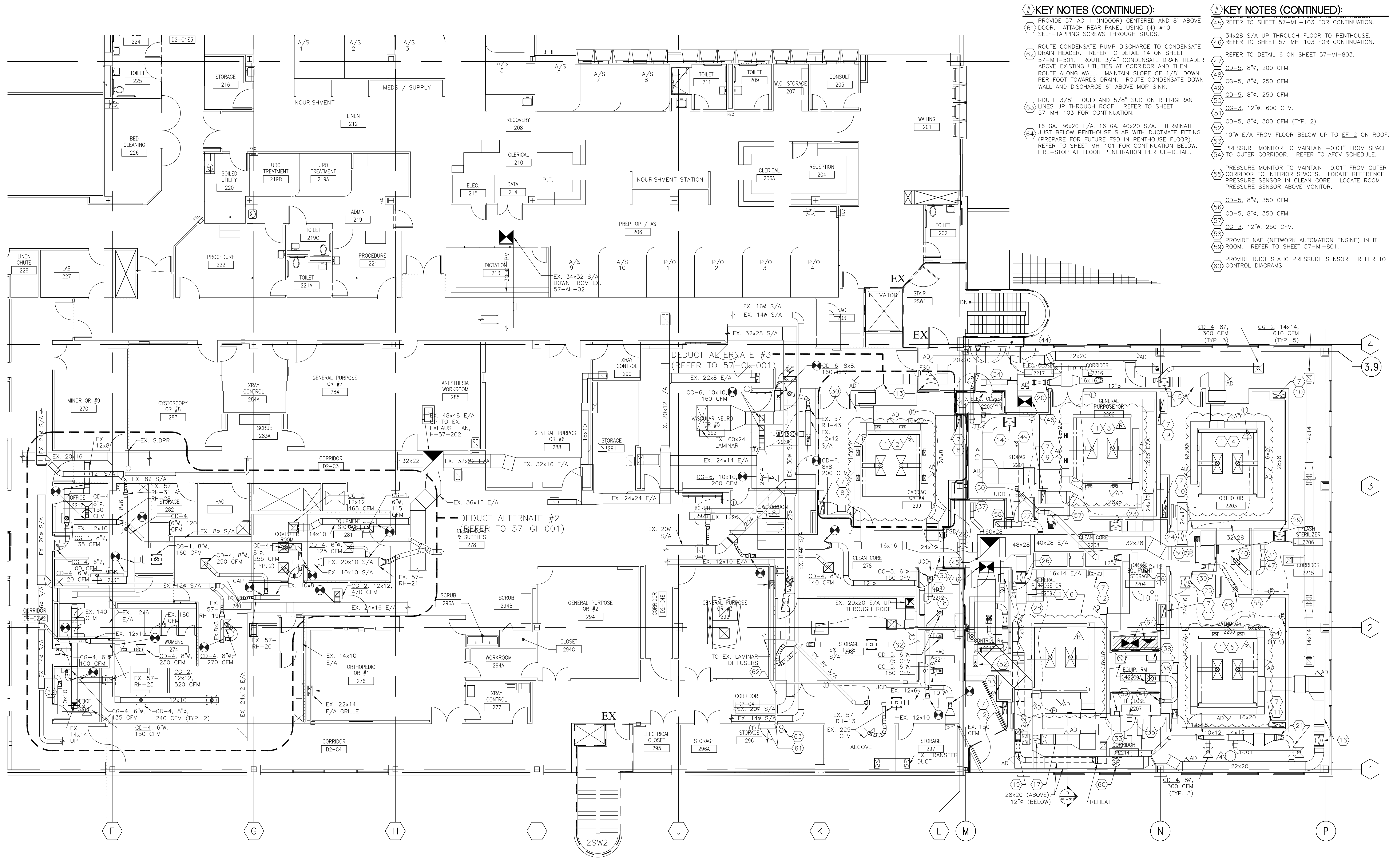
3/4" = 1'-0"
0 2 4 6 8 10 12

1/2" = 1'-0"
0 2 4 6 8 10 12

3/8" = 1'-0"
0 2 4 6 8 10 12

1/4" = 1'-0"
0 2 4 6 8 10 12

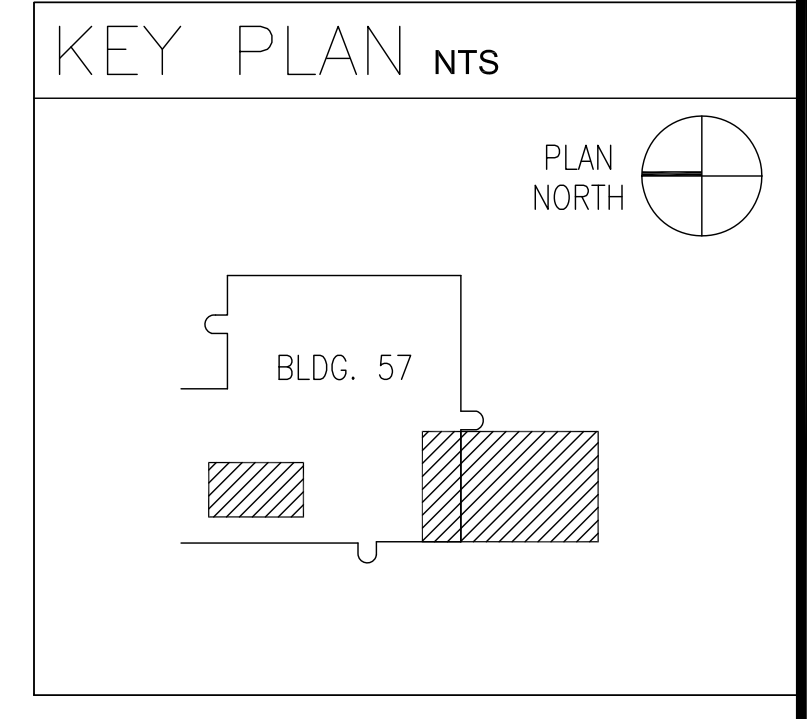
1/8" = 1'-0"
0 2 4 6 8 10 12



- # KEY NOTES (CONTINUED):**
- 61 PROVIDE 57-AC-1 (INDOOR) CENTERED AND 8" ABOVE DOOR. ATTACH REAR PANEL USING (4) #10 SELF-TAPPING SCREWS THROUGH STUDS.
 - 62 ROUTE CONDENSATE PUMP DISCHARGE TO CONDENSATE DRAIN HEADER. REFER TO DETAIL 14 ON SHEET 57-MH-501. ROUTE 3/4" CONDENSATE DRAIN HEADER ABOVE EXISTING UTILITIES AT CORRIDOR AND THEN ROUTE ALONG WALL. MAINTAIN SLOPE OF 1/8" DOWN PER FOOT TOWARDS DRAIN. ROUTE CONDENSATE DOWN WALL AND DISCHARGE 6" ABOVE MOP SINK.
 - 63 ROUTE 3/8" LIQUID AND 5/8" SUCTION REFRIGERANT LINES UP THROUGH ROOF. REFER TO SHEET 57-MH-103 FOR CONTINUATION.
 - 64 16 GA. 36x20 E/A, 16 GA. 40x20 S/A. TERMINATE JUST BELOW PENTHOUSE SLAB WITH DUCTMATE FITTING (PREPARE FOR FUTURE FSD IN PENTHOUSE FLOOR). REFER TO SHEET MH-101 FOR CONTINUATION BELOW. FIRE-STOP AT FLOOR PENETRATION PER UL-DETAIL.
- # KEY NOTES (CONTINUED):**
- 45 REFER TO SHEET 57-MH-103 FOR CONTINUATION.
 - 46 34x28 S/A UP THROUGH FLOOR TO PENTHOUSE. REFER TO SHEET 57-MH-103 FOR CONTINUATION.
 - 47 REFER TO DETAIL 6 ON SHEET 57-MI-803.
 - 48 CD-5, 8", 200 CFM.
 - 49 CG-5, 8", 250 CFM.
 - 50 CG-3, 12", 600 CFM.
 - 51 CD-5, 8", 300 CFM (TYP. 2)
 - 52 10" E/A FROM FLOOR BELOW UP TO EE-2 ON ROOF.
 - 53 PRESSURE MONITOR TO MAINTAIN +0.01" FROM SPACE TO OUTER CORRIDOR. REFER TO AFCV SCHEDULE.
 - 54 PRESSURE MONITOR TO MAINTAIN -0.01" FROM OUTER CORRIDOR TO INTERIOR SPACES. LOCATE REFERENCE PRESSURE SENSOR IN CLEAN CORE. LOCATE ROOM PRESSURE SENSOR ABOVE MONITOR.
 - 55 CD-5, 8", 350 CFM.
 - 56 CD-5, 8", 350 CFM.
 - 57 CG-3, 12", 250 CFM.
 - 58 PROVIDE NAE (NETWORK AUTOMATION ENGINE) IN IT ROOM. REFER TO SHEET 57-MI-801.
 - 59 PROVIDE DUCT STATIC PRESSURE SENSOR. REFER TO CONTROL DIAGRAMS.
 - 60

- GENERAL NOTES:**
- EXISTING SUPPLY FANS, EXHAUST FANS, AND TERMINALS REQUIRE REBALANCING. REFER TO SHEET 57-MH-604 FOR WORK.
 - ACCESS PANELS IN SUSPENDED CEILINGS ARE REQUIRED FOR ALL VALVES, TRAPS, CLEANOUTS, CONTROLS, ETC. ACCESS PANELS SHALL BE FURNISHED AND INSTALLED UNDER THE ARCHITECTURAL SPECIFICATIONS.
 - COORDINATE ALL CONSTRUCTION INTERRUPTIONS WITH COTR.
 - CONTRACTOR SHALL PROVIDE TEMPORARY DUST PROTECTION WHERE DEEMED NECESSARY BY THE COTR.
 - REFER TO ARCHITECTURAL REFLECTED CEILING PLANS FOR EXACT LOCATIONS OF CEILING DIFFUSERS, REGISTERS, AND GRILLES.
 - UNLESS NOTED OTHERWISE, SUPPLY AIR DUCT SIZES FOR INLETS AND OUTLETS OF TERMINAL UNITS AND FILTER HOUSINGS TO BE FULL SIZE. REFER TO SCHEDULE.
- # KEY NOTES:**
- COORDINATE EXACT SIZE AND FLOW OF EACH DIFFUSER WITH MANUFACTURER OF FURNISHED SYSTEM.
 - (3) CD-1 AND (4) CD-2. BALANCE TO 2900 CFM (TOTAL, 815 CFM LAMINAR, 2085 PERIMETER).
 - (3) CD-1 AND (4) CD-2. BALANCE TO 2500 CFM (TOTAL, 835 CFM LAMINAR, 1665 PERIMETER).
 - (3) CD-1 AND (4) CD-2. BALANCE TO 2700 CFM (TOTAL, 810 CFM LAMINAR, 1890 PERIMETER).
 - (3) CD-1 AND (4) CD-2. BALANCE TO 2650 CFM (TOTAL, 835 CFM LAMINAR, 1815 PERIMETER).
 - (3) CD-1 AND (4) CD-2. BALANCE TO 2650 CFM (TOTAL, 835 CFM LAMINAR, 1815 PERIMETER).
 - 28x8 E/A DUCT DOWN IN WALL. INSTALL STAINLESS STEEL GRILLE 7" AFF. BG-1 (TYP. OF BG-1)
 - BG-1. 24x18, 1325 CFM
 - BG-1. 24x18, 1125 CFM
 - BG-1. 24x18, 1225 CFM
 - BG-1. 24x18, 1200 CFM
 - BG-1. 24x18, 1200 CFM
 - TU-11-01, 57-SH-1, 57-AF-12T. REFER TO DETAIL 7 ON SHEET 57-MH-502 (TYP. 5).
 - TU-11-02, 57-SH-2, 57-AF-13T
 - TU-11-03, 57-SH-3, 57-AF-14T
 - TU-11-04, 57-SH-4, 57-AF-15T
 - TU-11-05, 57-SH-5, 57-AF-16T
 - TU-11-06, 57-AF-17T
 - TU-11-07, 57-AF-18T
 - TU-11-08, 57-AF-19T
 - TU-11-09, 57-AF-20T
 - AIR FLOW CONTROL VALVE, 57-AFCV-1.
 - 57-AFCV-2.
 - 57-AFCV-3.
 - 57-AFCV-4.
 - 57-AFCV-5.
 - 57-AFCV-6.
 - 57-AFCV-7.
 - 57-AFCV-8.
 - IF DEDUCT ALTERNATE #3 IS ACCEPTED, CAP DUCT AT LOCATION SHOWN. DO NOT PERFORM WORK IN ROOM 299, CARDIAC OR.
 - 57-AFCV-12.
 - PROVIDE NEW REHEAT COIL, 57-RH-47.
 - TU-11-10.
 - TU-11-11.
 - TU-11-12.
 - EXHAUST TERMINAL UNIT, 57-AFCV-9.
 - 57-AFCV-10.
 - 57-AFCV-11.
 - TG-2, 18x12, 8"-0" AFF (TYP. 2). PROVIDE DUCT BETWEEN SIDEWALL TRANSFER GRILLES.
 - CG-3, 10", 400 CFM.
 - TG-3, 14x10, 600 CFM S/A. TG-2, 14x10, 600 CFM E/A.
 - CD-4, 14", 800 CFM S/A. CG-1, 14", 800 CFM E/A.
 - TG-3, 14x10, 475 CFM S/A. TG-2, 14x10, 550 CFM E/A.
 - TG-2, 12x8, 150 CFM E/A.
 - 46x46 E/A UP THROUGH FLOOR TO PENTHOUSE

SECOND FLOOR HVAC PLAN
SCALE: 1/8" = 1'-0"



Westlake Reed Leskosky One East Camelback Road Suite 690 Phoenix, Arizona 85012 www.WRLdesign.com	RECORD DRAWING ALL AS-BUILT CONDITIONS HAVE BEEN VERIFIED BY OTHERS. WESTLAKE REED LESKOSKY IS TO ACCEPT NO LIABILITY AND ARE TO BE HELD HARMLESS FOR ANY DISCREPANCIES BETWEEN INFORMATION INCLUDED HEREIN AND FIELD CONDITIONS.	Approved: Director	Drawing Title: SECOND FLOOR HVAC PLAN	Project Title: EXPAND OR SUITE, BUILDING 57	Date: 03/16/09		
		Approved: Chief of Staff			Project No.: 678-317		
		Approved: Associate Director	Approved: Chief of Surgery		DRAWING NO.: 57-MH-102		
		Approved: Assistant Director	Approved:	Building Number: 57	Checked: .	Drawn: .	Dwg. 72 of 150
		Approved: Chief, Facilities Management	Approved:	SAVAHCS TUCSON, AZ 85723			

"BID SET"

Office of Facilities
Veterans Administration