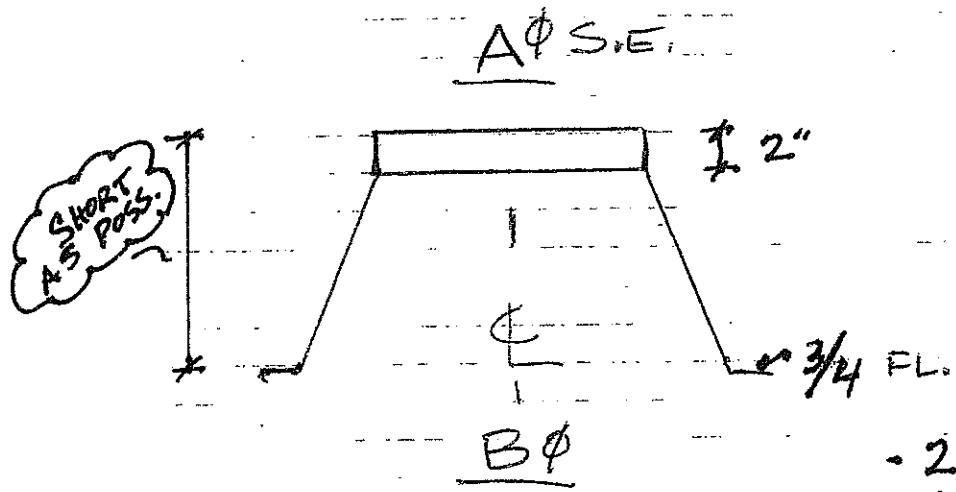


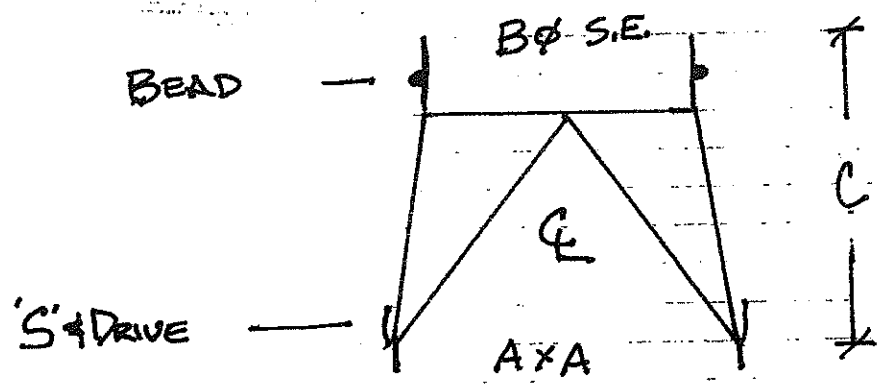
7th Floor - Custom Fab HVAC
BELL MOUTH COLLAR



- 26 GA. G.I.
- SEALED

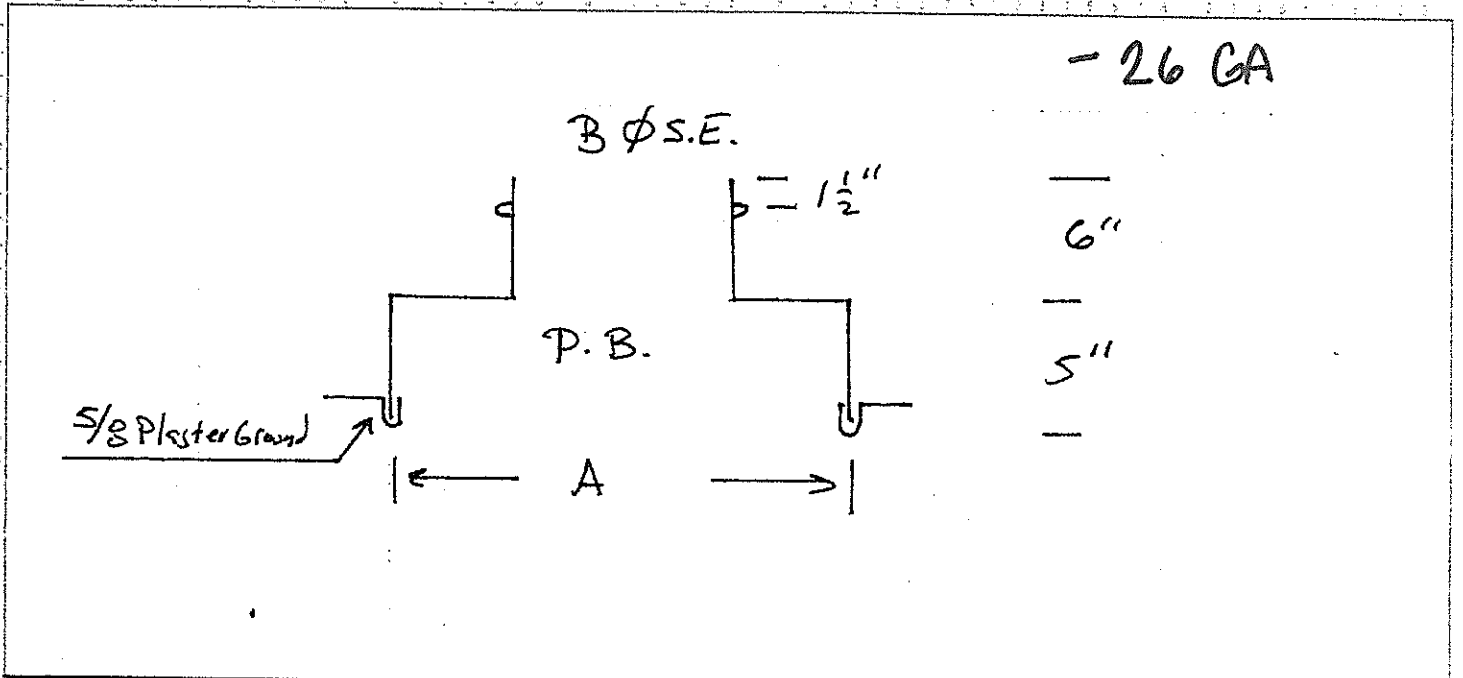
# REQ	A S.E	B	
25	6" ϕ	8" ϕ	
65	8" ϕ	10" ϕ	
50	10" ϕ	12" ϕ	
15	12" ϕ	14" ϕ	
5	14" ϕ	16" ϕ	

- SQ. ROUND
- 26 GA
- SEALED



A x A	B φ	C	QTY	MARK
16 x 16	10" φ	16"	1	SA IDU-3.2
18 x 12	14" φ	16"	1	OSA-15
18 x 10	10" φ	12"	1	OSA-24
12 x 10	10" φ	12"	1	OSA-42
16 x 10	14" φ	16"	1	EA-32
12 x 10	10" φ	12"	1	EA-42

JOB 7TH FLOOR HVAC
 SHEET NO. 3 OF 20
 CALCULATED BY _____ DATE _____
 CHECKED BY _____ DATE _____
 SCALE _____



# Res	A	B	MARK:
1	12 1/2" φ	8" φ	IDU-1.3
1	12 1/2" φ	10" φ	IDU-1.4
2	10 1/2" φ	8" φ	IDU-3.1, FDU-3.3
1	10 1/2" φ	8" φ	IDU-4.3
1	12 1/2" φ	12" φ	IDU-4.4
2	8 1/2" φ	8" φ	EXHAUST

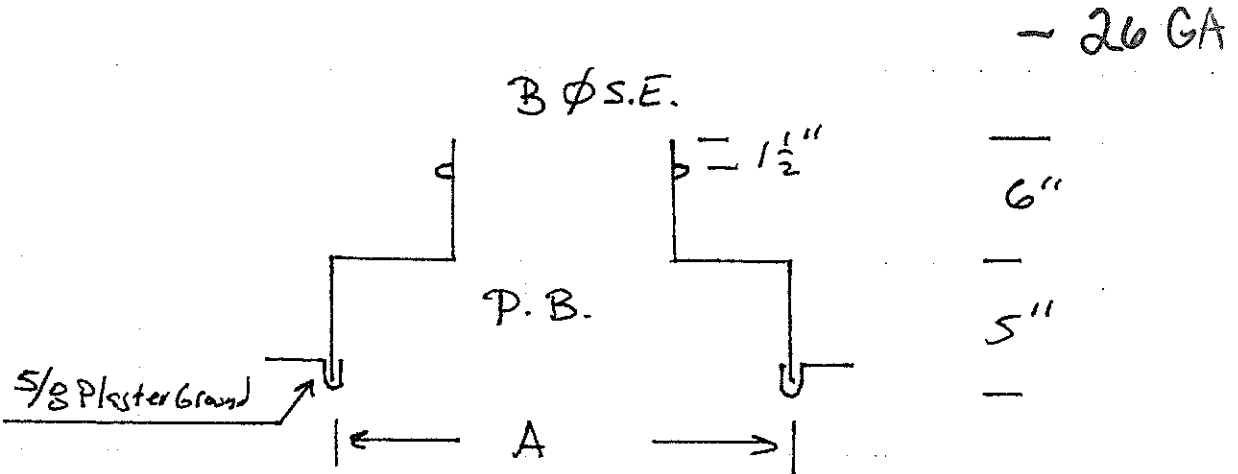
JOB 7TH FLOOR HVAC

SHEET NO. 4 OF 20

CALCULATED BY _____ DATE _____

CHECKED BY _____ DATE _____

SCALE _____



# Res	A	B	MARK
1	10 1/2" ϕ	8" ϕ	IDU-5.1
1	10 1/2" ϕ	10" ϕ	IDU-5.2
1	12 1/2" ϕ	10" ϕ	IDU-5.3
1	10 1/2" ϕ	8" ϕ	IDU-6.3
1	10 1/2" ϕ	8" ϕ	IDU-6.4
1	12 1/2" ϕ	12" ϕ	IDU-6.1
1	10 1/2" ϕ	10" ϕ	IDU-6.2
1	10 1/2" ϕ	10" ϕ	IDU-7.1
1	10 1/2" ϕ	10" ϕ	IDU-7.2
1	12 1/2" ϕ	10" ϕ	IDU-7.3

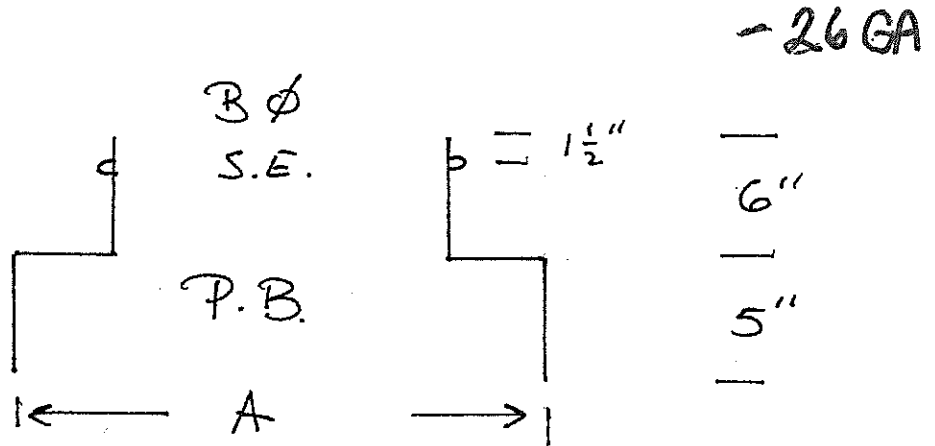
JOB 7TH FLOOR HVAC

SHEET NO. 5 OF 20

CALCULATED BY _____ DATE _____

CHECKED BY _____ DATE _____

SCALE _____



# Req.	A	B	MARK!
1	10 1/2" ϕ	10" ϕ	IDU-7.4
1	12 1/2" ϕ	10" ϕ	IDU-8.1
1	12 1/2" ϕ	12" ϕ	IDU-8.2
1	12 1/2" ϕ	12" ϕ	IDU-9.1
1	12 1/2" ϕ	12" ϕ	IDU-9.2
1	14 1/2" ϕ	14" ϕ	IDU-9.3
	9 1/2" ϕ	8" ϕ	IDU-10.1
	11" ϕ	8" ϕ	IDU-10.2
1	14 1/2" ϕ	12" ϕ	IDU-10.2
1	12 1/2" ϕ	12" ϕ	IDU-10.3
1	10 1/2" ϕ	8" ϕ	ERV-1
6	8 1/2" ϕ	8" ϕ	EXHAUST
6	10 1/2" ϕ	8" ϕ	EXHAUST

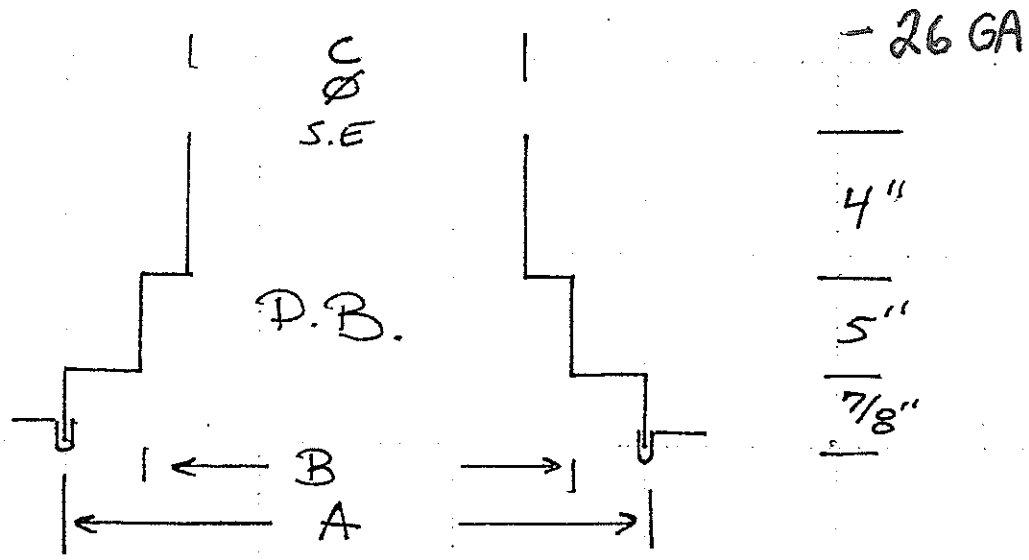
JOB 7TH FLOOR HVAC

SHEET NO. 6 OF 20

CALCULATED BY _____ DATE _____

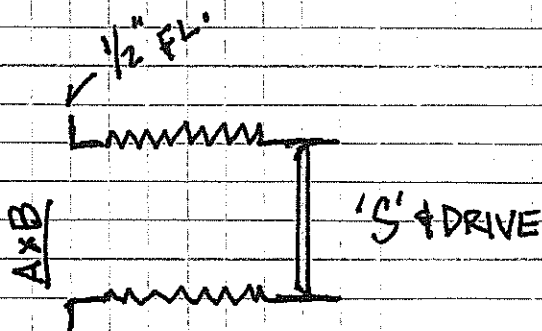
CHECKED BY _____ DATE _____

SCALE _____



# Req.	A	B	C	MARK
2	12 1/2 φ	9x9	8" φ	IDU-1.3
3	12 1/2 φ	9x9	8" φ	IDU-1.4
2	15 1/2 φ	12x12	10" φ	IDU-3.3
1	12 1/2 φ	9x9	8" φ	IDU-4.2
2	12 1/2 φ	9x9	8" φ	IDU-4.3
3	12 1/2 φ	9x9	8" φ	IDU-4.4
2	12 1/2 φ	9x9	8" φ	IDU-5.1
3	12 1/2 φ	9x9	8" φ	IDU-5.3
1	12 1/2 φ	9x9	8" φ	IDU-10.1
1	12 1/2 φ	9x9	8" φ	IDU-10.2

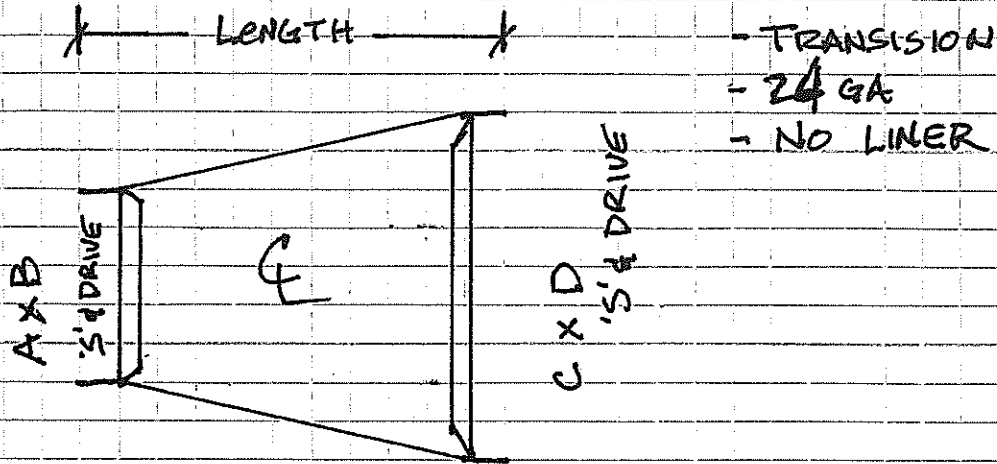
- 3" FLEX CONNECTOR
- PROVIDE 'S' & DRIVE
- 26 GA



A x B	MARK:	QTY:
6 1/2 x 29 3/4	RA IDU-1.3	1
6 1/2 x 29 3/4	SA IDU-1.3	1
" "	RA IDU-1.4	1
" "	SA IDU-1.4	1
8 x 4 1/4	RA IDU-3.2	1
7 1/2 x 32 7/8	SA IDU-3.2	1
6 1/2 x 29 3/4	IDU-3.1	2
8 x 4 1/4	RA IDU-3.3	1
7 1/2 x 32 7/8	SA IDU-3.3	1
8 x 4 1/4	RA IDU-4.1	1
7 1/2 x 32 7/8	SA IDU-4.1	1
8 x 4 1/4	RA IDU-4.2	1
7 1/2 x 32 7/8	SA IDU-4.2	1
6 1/2 x 29 3/4	-SEE NOTE-	10
6 1/2 x 29 3/4	-SEE NOTE#2-	8
6 1/2 x 29 3/4	2- IDU-5.2	14
	2- IDU-6.3	
	2- IDU-6.4	
	2- IDU-7.3	
	2- IDU-8.2	
	2- IDU-9.1	
	2- IDU-10.3	
8 x 4 1/4	RA IDU 6.1	1
7 1/2 x 32 7/8	SA IDU 6.1	1
6 1/2 x 29 3/4	RA IDU 6.2, 9.2	2
6 1/2 x 29 3/4	SA IDU 6.2, 9.2	2

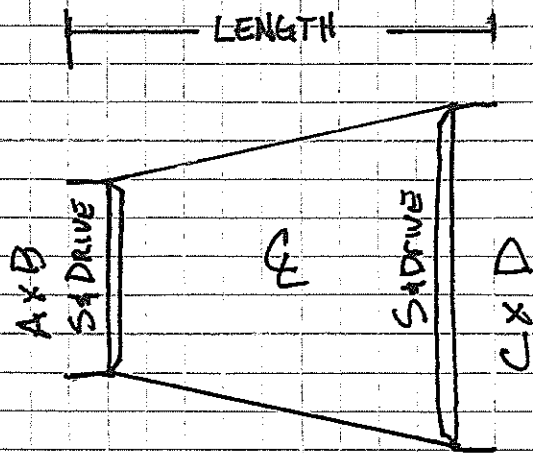
Note = Mark: 1-SR IDU-4.3
1-RA IDU-4.3

NOTE#2
MARK: 2-IDU 4.4
2-IDU 5.3
2-IDU 9.3
2-IDU 10.2
1-SA IDU-5.1
1-RA IDU-5.1
1-SA IDU-7.1
1-RA IDU-7.1
1-SA IDU-7.2
1-RA IDU-7.2
1-SA IDU-7.4
1-RA IDU-7.4



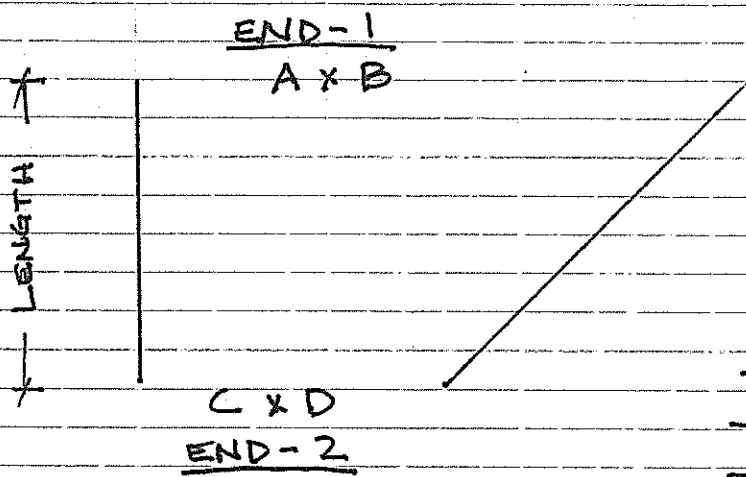
- TRANSITION
- 24 GA
- NO LINER

A x B	C x D	LENGTH	MARK	QTY:
6 1/2 x 29 3/4	12 x 12	24"	RA IDU-1.3	1
6 1/2 x 29 3/4	12 x 12	24"	SA IDU-1.3	1
" "	12 x 14	30"	RA IDU-1.4	1
" "	12 x 14	30"	SA IDU-1.4	1
8 x 4 1/4	12 x 22	32"	RA IDU-3.2	1
7 1/2 x 32 7/8	16 x 16	32"	SA IDU-3.2	1
6 1/2 x 29 3/4	12 x 14	30"	IDU-3.1	2
8 x 4 1/4	12 x 12	24"	RA IDU-3.3	1
7 1/2 x 32 7/8	12 x 12	24"	SA IDU-3.3	1
8 x 4 1/4	12 x 22	32"	RA IDU-4.1	1
7 1/2 x 32 7/8	14 x 20	32"	SA IDU-4.1	1
8 x 4 1/4	14 x 22	32"	RA IDU-4.2	1
7 1/2 x 32 7/8	14 x 22	32"	SA IDU-4.2	1
6 1/2 x 29 3/4	10 x 12	24"	SA IDU-4.3	1
6 1/2 x 29 3/4	12 x 12	24"	RA IDU-4.3	1
6 1/2 x 29 3/4	12 x 16	32"	RA IDU-4.4	1
6 1/2 x 29 3/4	12 x 14	32"	SA IDU-4.4	1
6 1/2 x 29 3/4	10 x 12	24"	SA IDU-5.1	1
6 1/2 x 29 3/4	12 x 12	24"	RA IDU-5.1	1
6 1/2 x 29 3/4	10 x 14	24"	RA IDU-5.2	1
6 1/2 x 29 3/4	10 x 12	24"	SA IDU-5.2	1
6 1/2 x 29 3/4	12 x 16	32"	RA IDU-5.3	1
6 1/2 x 29 3/4	12 x 14	30"	SA IDU-5.3	1
6 1/2 x 29 3/4	10 x 12	24"	SA IDU-6.3	1
6 1/2 x 29 3/4	12 x 12	24"	RA IDU-6.3	1
6 1/2 x 29 3/4	10 x 14	24"	RA IDU-6.4	1
6 1/2 x 29 3/4	10 x 12	24"	SA IDU-6.4	1



- TRANSITION
 - 24 GA
 - NO LINER

A x B	C x D	LENGTH	MARK:	QTY:
3 x 4 1/4	12 x 14	30"	RA IDU-6.1	1
7 1/2 x 32 7/8	12 x 12	24"	SA IDU-6.1	1
6 1/2 x 29 3/4	10 x 14	24"	RA IDU-6.2	1
6 1/2 x 29 3/4	10 x 14	24"	SA IDU-6.2	1
6 1/2 x 29 3/4	10 x 14	24"	RA IDU-7.1	1
6 1/2 x 29 3/4	10 x 14	24"	SA IDU-7.1	1
6 1/2 x 29 3/4	10 x 14	24"	IDU-7.2	2
6 1/2 x 29 3/4	10 x 14	24"	IDU-7.3	1
6 1/2 x 29 3/4	10 x 12	24"	IDU-7.3	1
6 1/2 x 29 3/4	10 x 12	24"	IDU-7.4	1
6 1/2 x 29 3/4	12 x 12	24"	IDU-7.4	1
6 1/2 x 29 3/4	10 x 14	24"	IDU-8.1	1
6 1/2 x 29 3/4	12 x 14	24"	RA IDU-8.1	1
6 1/2 x 29 3/4	10 x 14	24"	IDU-8.2	2
6 1/2 x 29 3/4	10 x 14	24"	IDU-9.1	2
6 1/2 x 29 3/4	12 x 14	24"	SA IDU-9.3	1
6 1/2 x 29 3/4	12 x 16	32"	RA IDU-9.3	1
6 1/2 x 29 3/4	10 x 14	24"	IDU-9.2	2
6 1/2 x 29 3/4	12 x 14	24"	IDU-10.2	1
6 1/2 x 29 3/4	12 x 16	32"	IDU-10.2	1
6 1/2 x 29 3/4	10 x 14	24"	IDU-10.3	2
11 x 4 3/8	14 x 30	36"	IDU-10.1	1
11 3/4 x 39 3/4	14 x 24	36"	IDU-10.1	1
12 x 20	14 x 30	12"	SA-10.1	1
14 x 16	14 x 24	12"	SA-10.1	1

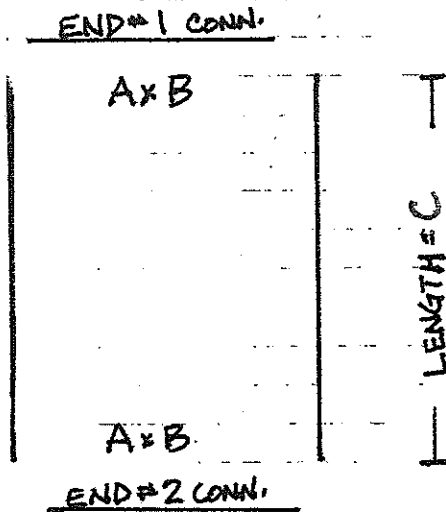


- 24 GA. G.I.
- NO LINER
- SEALED
- PROVIDE S&DRIVES

A x B	C x D	LENGTH	END-1	END-2	QTY:	MARK
32x14	26x14	8"	INSIDE TAP	S&D	1	OSA-4
26x14	16x14	12"	S&D	S&D	1	OSA-7
24x12	18x12	8"	INSIDE TAP	S&D	1	OSA-12
24x10	18x10	8"	INSIDE TAP	S&D	1	OSA-16
26x10	20x10	8"	INSIDE TAP	S&D	1	OSA-25
20x10	18x10	8"	S&D	S&D	1	OSA-30
18x10	12x10	8"	S&D	S&D	1	OSA-38
32x14	26x14	8"	INSIDE TAP	S&D	1	EA-3
24x12	18x12	8"	INSIDE TAP	S&D	1	EA-10
22x10	16x10	8"	INSIDE TAP	S&D	1	EA-18
20x10	16x10	8"	S&D	S&D	1	EA-29
22x12	16x12	8"	INSIDE TAP	S&D	1	EA-33

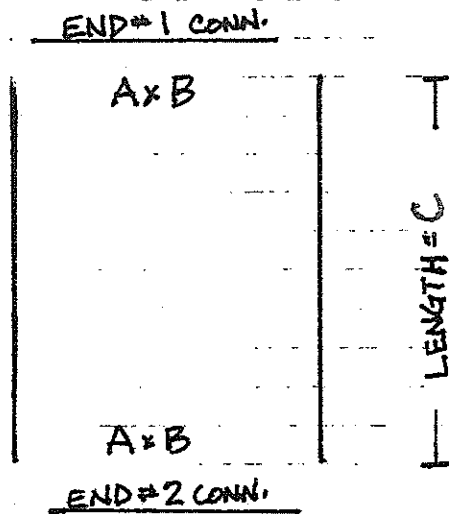
- STRAIGHT DUCT

- 24 GA.

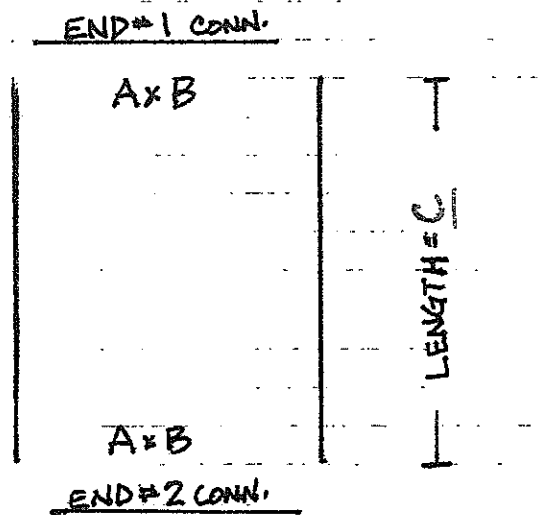


A x B	C = LENGTH	END 1 CONN.	END 2 CONN.	DUCT LINER	QTY:	MARK
12x12	48"	S&D DRIVE	END CAP	YES	1	SA IDU-1.3
12x12	36"	" "	" "	YES	1	RA IDU-1.3
12x14	48"	" "	" "	YES	1	SA IDU-1.4
12x14	45"	" "	" "	YES	1	RA IDU-1.4
16x16	65"	S&D DRIVE	S&D DRIVE	YES	1	SA IDU-3.2
12x22	48"	" "	" "	YES	1	RA IDU-3.2
12x22	42"	S&D DRIVE	END CAP	YES	1	RA IDU-3.2
12x14	42"	" "	" "	YES	2	IDU-3.1
12x12	42"	" "	" "	YES	1	RA IDU-3.3
12x12	60"	" "	" "	YES	1	SA IDU-3.3
20x14	42"	S&D	S&D	YES	1	SA IDU-4.1
20x14	42"	S&D	END CAP	YES	1	SA IDU-4.1
12x22	24"	S&D	S&D	YES	2	RA IDU-4.1
12x22	36"	S&D	END CAP	YES	1	RA IDU-4.1
14x22	54"	S&D	S&D	YES	1	SA IDU-4.2
14x22	54"	S&D	END CAP	YES	1	SA IDU-4.2
14x22	12"	S&D	S&D	YES	1	RA IDU-4.2
14x22	30"	S&D	S&D	YES	2	RA IDU-4.2
14x22	48"	S&D	END CAP	YES	1	RA IDU-4.2
14x22	48"	S&D	S&D	YES	1	RA IDU-4.2
10x12	42"	S&D	END CAP	YES	1	SA IDU-4.3
12x12	36"	S&D	END CAP	YES	1	RA IDU-4.3

- STRAIGHT DUCT
- 24 GA.

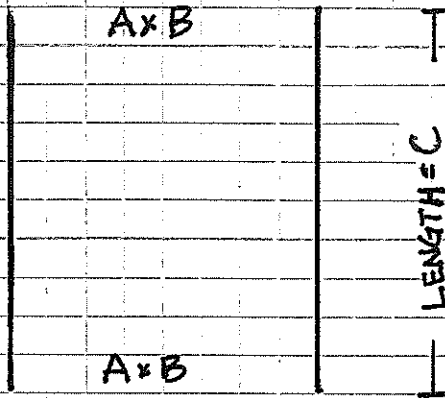


A x B	C = LENGTH	END 1 CONN.	END 2 CONN.	DUCT LINER	QTY:	MARK
12x16	36"	S&D	E/C	YES	1	RA IDU 4.4
12x14	54"	S&D	E/C	YES	1	SA IDU 4.4
10x12	40"	S&D	E/C	YES	1	SA IDU 5.1
12x12	36"	S&D	E/C	YES	1	RA IDU 5.1
10x14	30"	S&D	E/C	YES	1	RA IDU 5.2
10x12	42"	S&D	E/C	YES	1	SA IDU 5.2
12x16	32"	S&D	E/C	YES	1	RA IDU 5.3
12x14	60"	S&D	E/C	YES	1	SA IDU 5.3
10x12	42"	S&D	E/C	YES	1	SA IDU 6.3
12x12	42"	S&D	E/C	YES	1	RA IDU 6.3
10x14	30"	S&D	E/C	YES	1	RA IDU 6.4
10x12	40"	S&D	E/C	YES	1	SA IDU 6.4
12x14	42"	S&D	E/C	YES	1	RA IDU 6.1
12x12	40"	S&D	S&D	YES	1	SA IDU 6.1
12x12	40"	S&D	E/C	YES	1	SA IDU 6.1
10x14	40"	S&D	E/C	YES	1	SA IDU 6.2
10x14	30"	S&D	E/C	YES	1	RA IDU 6.2
10x14	40"	S&D	E/C	YES	1	SA IDU 7.1
10x14	30"	S&D	E/C	YES	1	RA IDU 7.1



A x B	C = LENGTH	END 1 CONN.	END 2 CONN.	DUCT LINER	QTY:	MARK
10 x 14	40"	S&D	E/C	YES	1	SA 1DU-7.2
10 x 14	30"	S&D	E/C	YES	1	RA 1DU-7.2
10 x 12	40"	S&D	S&D	YES	1	SA 1DU-7.3
10 x 14	42"	S&D	E/C	YES	1	RA 1DU-7.3
10 x 12	40"	S&D	E/C	YES	1	SA 1DU-7.3
10 x 12	40"	S&D	E/C	YES	1	SA 1DU-7.4
12 x 12	36"	S&D	E/C	YES	1	RA 1DU-7.4
10 x 14	42"	S&D	S&D	YES	1	SA 1DU-8.1
10 x 14	42"	S&D	E/C	YES	1	SA 1DU-8.1
12 x 14	34"	S&D	S&D	YES	1	RA 1DU-8.1
12 x 14	32"	S&D	E/C	YES	1	RA 1DU-8.1
10 x 14	42"	S&D	E/C	YES	1	SA 1DU-8.2
10 x 14	24"	S&D	E/C	YES	1	RA 1DU-8.2
10 x 14	40"	S&D	E/C	YES	1	SA 1DU-9.1
10 x 14	30"	S&D	E/C	YES	1	RA 1DU-9.1
10 x 14	40"	S&D	E/C	YES	1	SA 1DU-9.2
10 x 14	30"	S&D	E/C	YES	1	RA 1DU-9.2
12 x 14	56"	S&D	E/C	YES	1	SA 1DU-9.3
12 x 16	40	S&D	E/C	YES	1	RA 1DU-9.3

END #1 CONN.



END #2 CONN.

A x B	C = LENGTH	END 1 CONN.	END 2 CONN.	DUCT LINER	QTY:	MARK
12 x 14	36"	S&D	E/C	YES	1	SA IDU-10.2
12 x 16	32"	S&D	E/C	YES	1	RA IDU-10.2
10 x 14	42"	S&D	E/C	YES	1	SA IDU-10.3
10 x 14	32"	S&D	E/C	YES	1	RA IDU-10.3
14 x 30	6"	S&D	S&D	YES	1	RA IDU-10.1
14 x 30	24"	S&D	S&D	YES	1	RA IDU-10.1
12 x 20	12"	S&D	3/4" FL.	NO	1	RA IDU-10.1
14 x 24	18"	S&D	S&D	YES	1	SA IDU-10.1
14 x 24	48"	S&D	S&D	YES	2	SA IDU-10.1
14 x 16	40"	S&D	E/C	YES	1	SA IDU-10.1

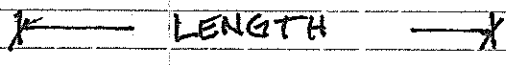
- STRAIGHT DUCT
- NO LINER
- 24 GA. G.I.
- PROVIDE 'S' & DRIVES

← LENGTH →

END-1
A x B

A x B
END-2

A x B	LENGTH	END-1	END-2	QTY:	MARK:
28 x 14	60"	S&D	E/C	2	OSA-1/3
28 x 14	40"	S&D	S&D	1	OSA-2
26 x 14	60"	S&D	S&D	1	OSA-5
26 x 14	48"	S&D	S&D	1	OSA-6
16 x 14	24"	S&D	S&D	1	OSA-8
16 x 14	60"	S&D	S&D	2	OSA-9/10
16 x 14	60"	S&D	E/C	1	OSA-11
18 x 12	54"	S&D	S&D	2	OSA-13/14
18 x 10	54"	S&D	S&D	1	OSA-17
18 x 10	60"	S&D	S&D	3	OSA-18/19/20
18 x 10	36"	S&D	S&D	2	OSA-22/23
20 x 10	18"	S&D	S&D	1	OSA-26
20 x 10	60"	S&D	S&D	3	OSA-27/28/29
18 x 10	60"	S&D	S&D	5	OSA-31/33/34/35/36
18 x 10	48"	S&D	S&D	1	OSA-37
12 x 10	36"	S&D	S&D	1	OSA-39
12 x 10	48"	S&D	S&D	1	OSA-41
24 x 12	48"	E/C	E/C	1	OSA-43



- STRAIGHT DUCT
- 24 GA. G.I.
- PROVIDE ('S' & DRIVE)

END-1
A x B

A x B
END-2

A x B	LENGTH	END-1	END-2	LINER	QTY:	MARK:
30x16	60"	S&D	E/C	YES	2	EA-1/2
26x14	24"	S&D	S&D	NO	1	EA-4
26x14	24"	S&D	E/C	NO	1	EA-9
26x14	60"	S&D	S&D	NO	4	EA-5/6/7/8
18x12	24"	S&D	S&D	NO	1	EA-11
18x12	60"	S&D	S&D	NO	5	EA-12/13/14/15/16
18x12	60"	S&D	E/C	NO	1	EA-17
16x10	60"	S&D	S&D	NO	1	EA-20
16x10	60"	S&D	E/C	NO	1	EA-21
16x10	54"	S&D	S&D	NO	1	EA-19
22x12	60"	S&D	S&D	YES	2	EA-22/23
22x12	44"	S&D	S&D	YES	1	EA-24
20x10	28"	S&D	S&D	NO	1	EA-26
20x10	18"	S&D	S&D	NO	1	EA-28
16x10	42"	S&D	S&D	NO	2	EA-30/31
16x12	24"	S&D	S&D	YES	1	EA-34
14x10	18"	S&D	S&D	NO	1	EA-36
14x10	60"	S&D	S&D	NO	4	EA-37/38/39/40

<p>- 24 GA. - NO LINER - PROVIDE 'S' DRIVE 'S'4D</p>	<p>90°</p> <p>S'4DRIVE (TYP.)</p>	<p>90°</p> <p>'S'4DRIVE (TYP.)</p>
<p>1-OF MARK: OSA-21</p>	<p>24 GA. NO LINER PROVIDE 'S'4DRIVE TURN VANES = AERODYNE HEP 1-OF MARK: OSA-32</p> <p>90°</p> <p>'S'4DRIVE (TYP.)</p>	<p>24 GA. NO LINER PROVIDE 'S'4DRIVE TURN VANES = AERODYNE HEP 1-OF MARK: OSA-40</p> <p>90°</p> <p>S'4D (TYP.)</p>
<p>90°</p> <p>'S'4DRIVE (TYP.)</p>	<p>24 GA. NO LINER PROVIDE 'S'4DRIVE TURN VANES = AERODYNE HEP 1-OF MARK: EA-27</p>	<p>24 GA. NO LINER PROVIDE 'S'4DRIVE TURN VANES = AERODYNE HEP 1-OF MARK: EA-35</p>
<p>- 24 GA. - NO LINER - PROVIDE 'S'4DRIVE - TURN VANES = AERODYNE HEP - 1-OF MARK: EA-25</p>	<p>- 24 GA. - NO LINER - PROVIDE 'S'4DRIVE - TURN VANES = AERODYNE HEP - 1-OF MARK: EA-27</p>	<p>- 24 GA. - NO LINER - PROVIDE 'S'4DRIVE - TURN VANES = AERODYNE HEP - 1-OF MARK: EA-35</p>

MISC FITTINGS

DATE DETAILED: _____ DATE REQUIRED: _____ SHEET 19 OF 20

LOW-HIGH PRESSURE DETAIL SHEET PRESSURE: POSITIVE NEGATIVE 1/2" 1" 2" 3" 4" 6" 10"

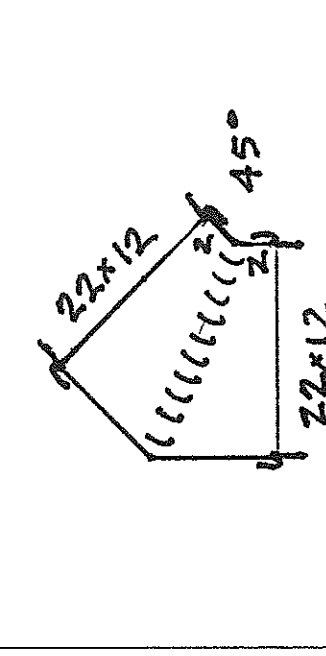
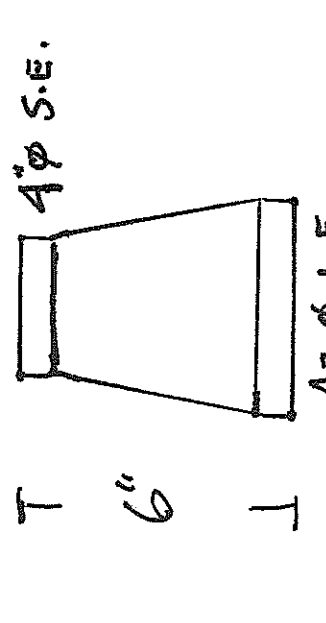
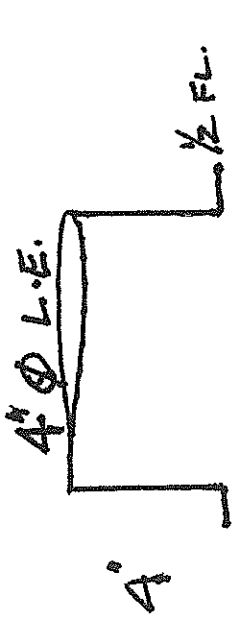
JOB NAME: _____ JOB #: _____ CODE: _____ LINER THICKNESS: 1" 1-1/2" 2" EXPOSED: Y N

ATTN: _____ FROM: _____ SYSTEM: _____

PITTSBURGH SNAPLOCK MIG WELD TIG WELD

SEALED: Y N WITH: _____ X-PANEL BEAD ASSEMBLE K.D.

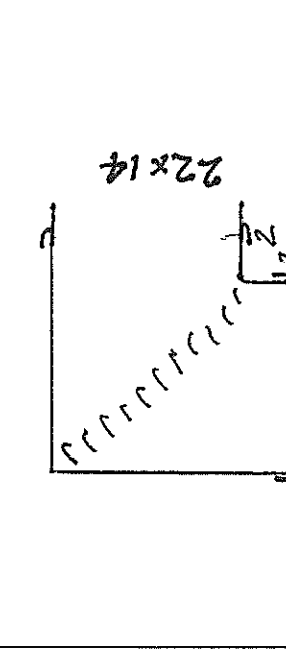
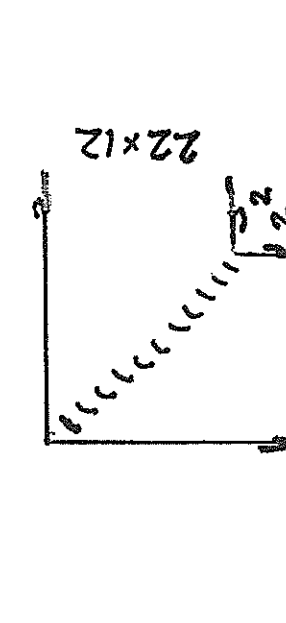
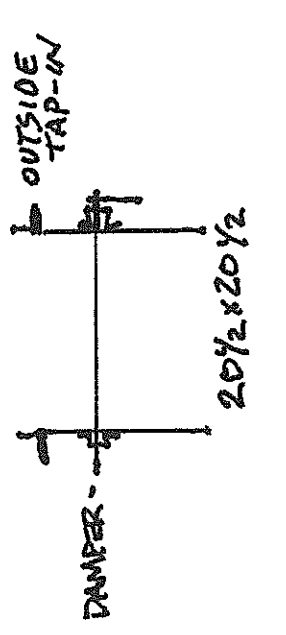
MATERIAL: _____ TAG: **CASOSA** QTY: **6** GA: **Z6** TAG: **RA 1DU-3.2** QTY: **2** GA: _____



A = 4" ϕ L.E.

A = 6" ϕ - 4-OF
A = 8" ϕ - 2-OF

* TURN VANES = AERO DYNE HEP
* S & DRIVE (PROVIDE)



TAG: RA 1DU-3.2 = 1
RA 1DU-4.1 = 1
RA 1DU-4.2 = 1

* TURN VANES AERO DYNE HEP
* S & DRIVE (PROVIDE)

* TURN VANES AERO DYNE HEP
* S & DRIVE (PROVIDE)

MISC FITTINGS

DATE DETAILED: _____ DATE REQUIRED: _____ SHEET 20 OF 20

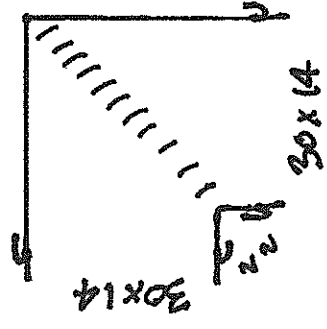
LOW-HIGH PRESSURE DETAIL SHEET PRESSURE: POSITIVE NEGATIVE 1/2" 1" 2" 3" 4" 6" 10"

JOB NAME: _____ JOB #: _____ CODE: _____ LINER THICKNESS: 1" 1-1/2" 2" EXPOSED: Y N

ATTN: _____ FROM: _____ SYSTEM: _____ PITTSBURGH SNAPLOCK MIG WELD TIG WELD

MATERIAL: _____ SEALED: Y N WITH: _____ X-PANEL BEAD ASSEMBLE K.D.

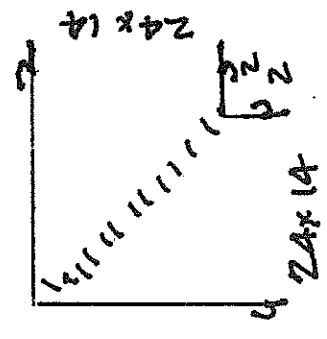
TAG: RA-10.1 QTY: 1 GA: 24 TAG: SA-10.1 QTY: 1 GA: 24 TAG: EXHAUST QTY: 6 GA: 26



'S & DRIVE (PROVIDE)
TURN VANES - AERODYNE HEP

TAG: _____ QTY: _____ GA: _____

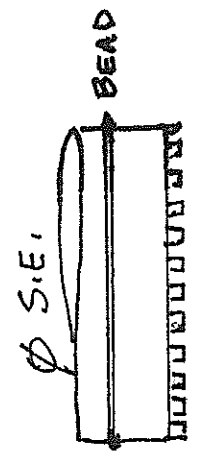
1" x 10' x 22 GA. STRAP = 200 P.S.
4" x 10' x 26 GA. STRAP = 120 P.S.



'S & DRIVE (PROVIDE)
TURN VANES - AERODYNE HEP

TAG: _____ QTY: _____ GA: _____

6" wide DUCT LINER FOR FLEX
STRAPS = 4 ROLLS



5-8" ϕ
1-14" ϕ
START COLLAR

TAG: _____ QTY: 4 GA: 24

48" x 60" FLAT STOCK
24 GA.
4 SHEETS