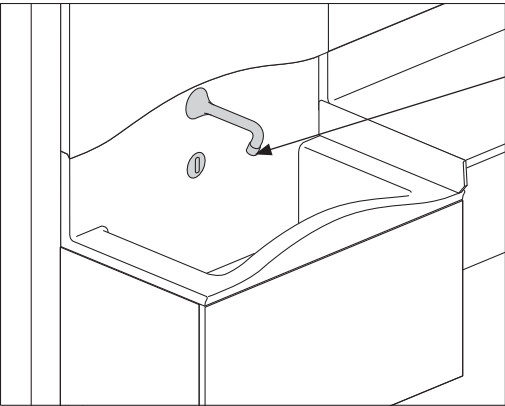


8. Sink Modules

TW239. - Faucet

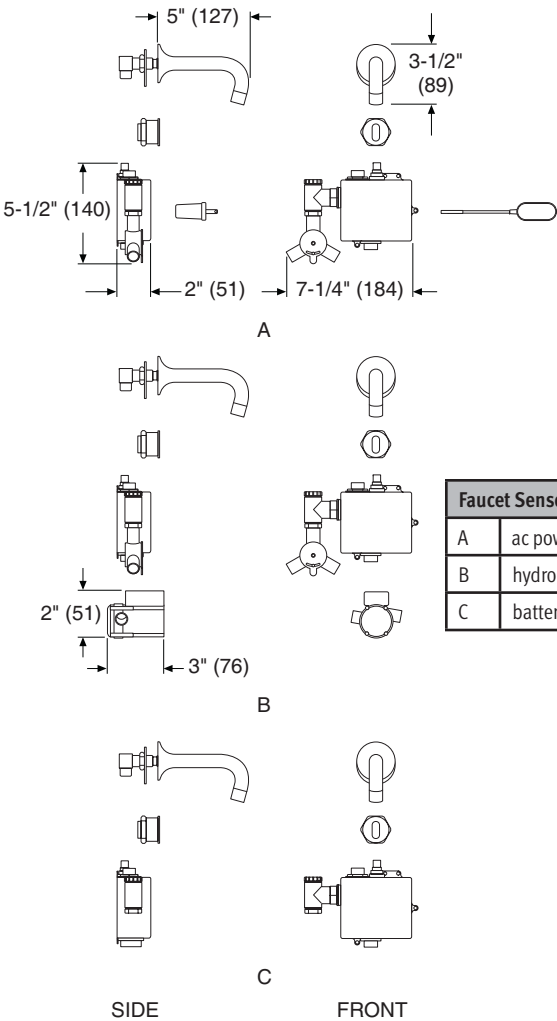
This faucet is designed to work with a 13"-deep sink and includes a hands-free sensor, faucet (spout), mixing valve, controller, sensor connector, spout hose, AC/DC transformer, and hydrogenerator.



Some versions of the faucet may have a seamed spout.

Notes:

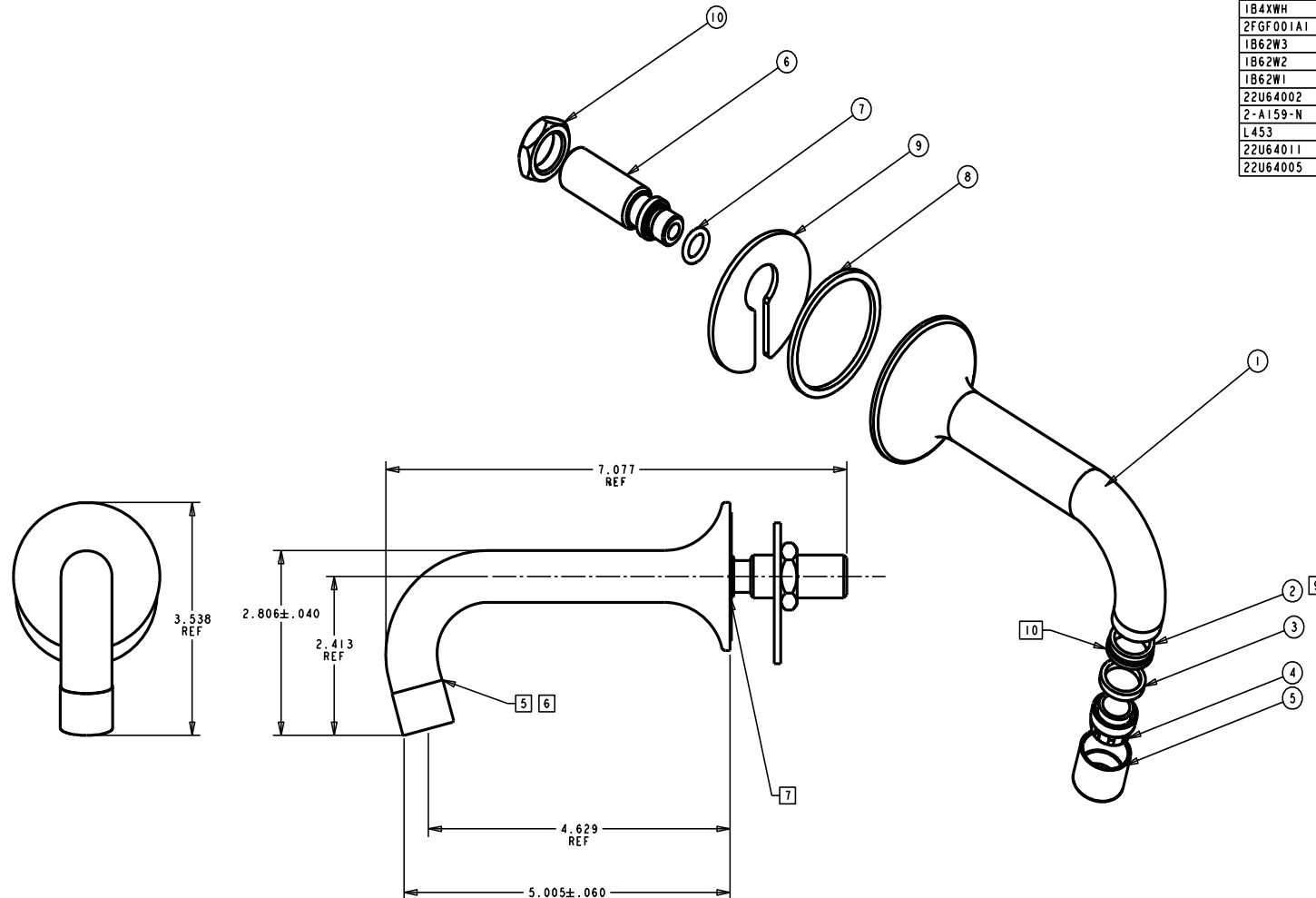
- AC powered faucet sensor option (A) requires an electrical outlet to plug into. It is recommended that the outlet be located to fit inside the sink surround.
- Hydro-powered faucet sensor option (B) is self charging and does not require an outlet.
- Battery powered faucet sensor option (C) uses 4 AA batteries (included).
- Use laminar flow outlet with a 1.5 GPM flow rate. Recommended part Neoperl model number # 42.3156.0000
- If the spout is seamed use the laminar flow outlet with a 1.5 GPM flow rate. Recommended part Neoperl model #1136505.
- If the spout is not seamed use laminar flow outlet with 1.5 GPM flow rate. (Neoperl "CACHE" Type). Recommended part Neoperl model # 1303305. Installation/Removal key (Neoperl # 1190405) is strongly recommended.
- HMI service part # U1B7254 includes all outlet parts for both seamed and non-seamed faucet spouts.



## 8. Sink Modules

### TW239. - Faucet

Faucet dimensions and Assembly information.



ASSY NO	QTY	DESCRIPTION	ITEM
1B62W0			
PART NO			
1B4XWH	1	SPOUT	1
2FGF001A1	1	THREADED ADAPTER	2
1B62W3	1	WASHER - RUBBER	3
1B62W2	1	OUTLET - SPOUT, LAMINAR FLOW	4
1B62W1	1	HOUSING - SPOUT, OUTLET	5
22U64002	1	NIPPLE - FAUCET	6
2-A159-N	1	O-RING, NIPPLE	7
L453	1	O-RING, SPOUT	8
22U64011	1	WASHER - BACKING PLATE	9
22U64005	1	NUT- HEX	10

#### NOTES:

- 1 INTERPRET DRAWING PER ASME Y14.5M-1994
- 2 DIMENSIONS AND TOLERANCES ARE U.S. CUSTOMARY UNITS
- 3 3D CAD DATA AVAILABLE PER HMI ENGINEERING
- 4 ALL COMPONENTS/MATERIALS MUST MEET THE FOLLOWING SPECIFICATIONS:  
ASME A112.18.1  
ANSI/NSF 61  
CSA B125.1
- 5 THREADED JOINT BETWEEN SPOUT OUTLET HOUSING AND SPOUT MUST NOT LEAK (RUBBER WASHER MUST CRUSH DURING ASSEMBLY)
- 6 NO VISIBLE GAP ALLOWED BETWEEN THE SPOUT OUTLET HOUSING AND SPOUT
- 7 THREADED JOINTS AT BACK OF SPOUT MUST NOT LEAK
- 8 APPROVED SUPPLIER:  
ITC.  
ANY CHANGES TO PART DESIGN, MATERIAL, MANUFACTURING PROCESS, TOOLING OR SUB-SUPPLIER STATUS REQUIRE APPROVAL FROM AN HMI QUALITY ENGINEER IN ACCORDANCE WITH HMI CORPORATE PPAP PROCEDURE
- 9 ITEM 2 IS TO BE BRAZED INTO OUTLET OF ITEM 1, IN LEAK FREE MANNER, ALLOWING FOR PROPER SEATING/SEALING OF WASHER, LAMINAR FLOW DEVICE, SPOUT OUTLET HOUSING, AND GASKET
- 10 NOTE: ADAPTER MUST USE A 3/4-27 UNS THREAD TO MATCH SPOUT OUTLET HOUSING