

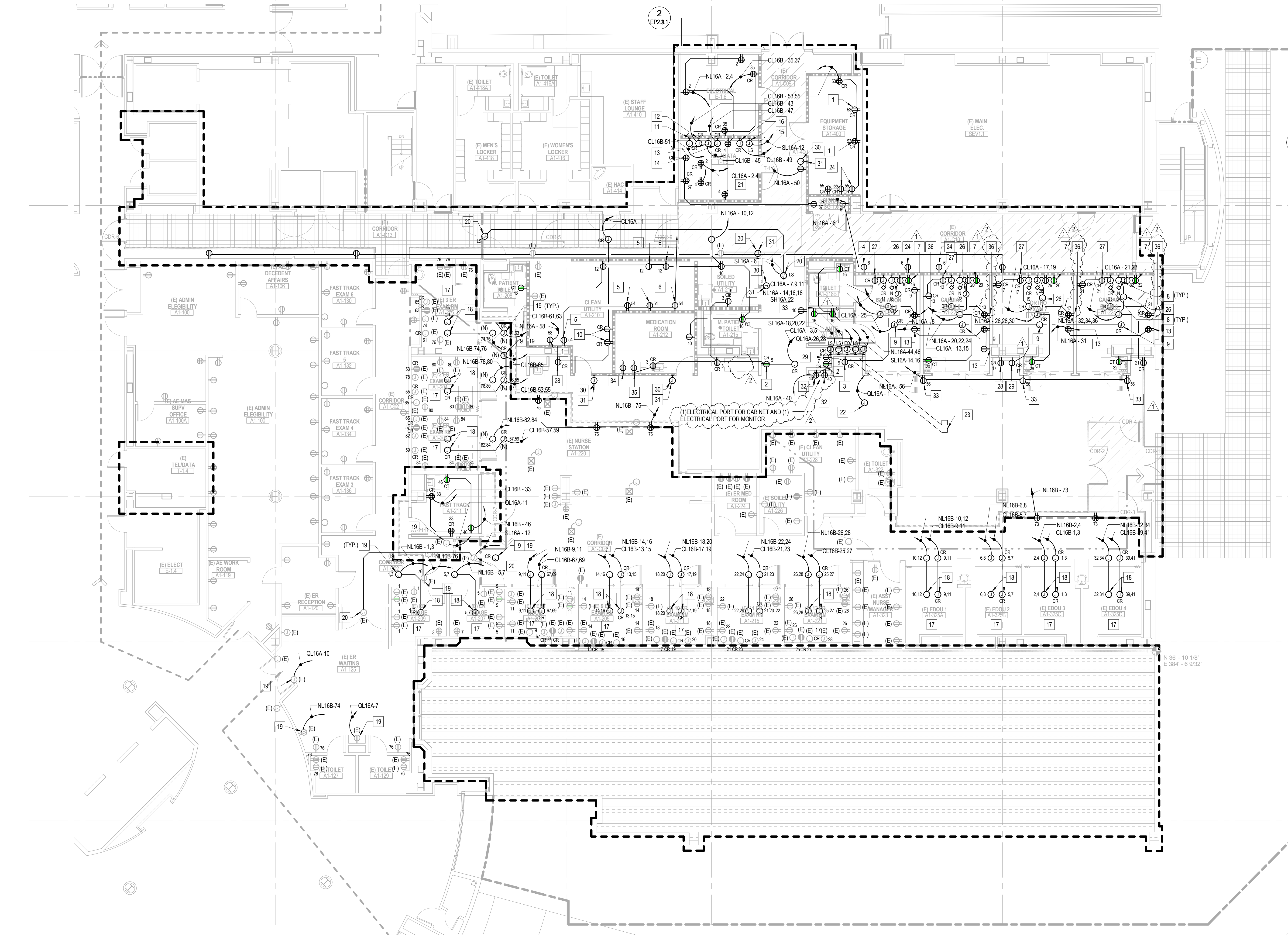
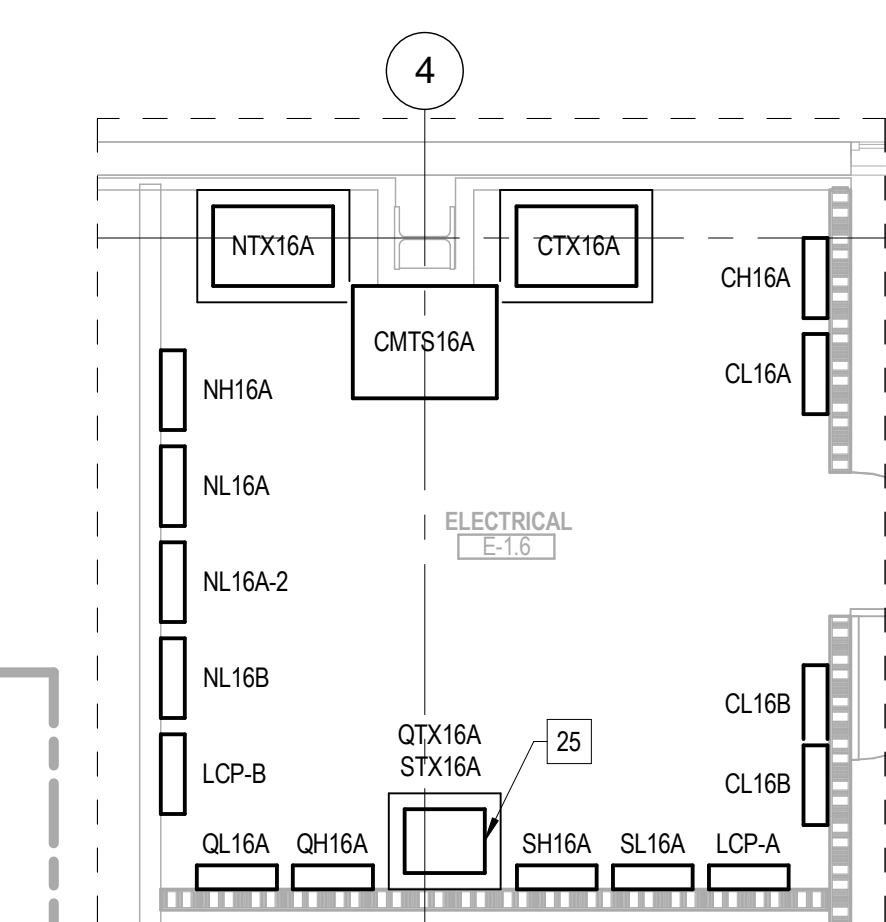
SHEET NOTES

- FOR ALL SPECIAL HEIGHT RECEPTACLES REFER TO ARCHITECTURAL ELEVATION DETAILS.
- RECEPTACLES IN PUBLIC AREAS SHALL BE TAMPER RESISTANT.
- INTERCEPT EXISTING UNDERGROUND CONDUITS FOR EXTERIOR LIGHTING/POWER. EXTEND CONDUIT AND CONDUCTORS TO NEW PANELBOARDS IN NEW ELECTRICAL CLOSET AND CONNECT COMPLETE. CONTRACTOR TO FIELD VERIFY THE LOCATION OF THE EXISTING CONDUITS AND FEEDERS. THE FOLLOWING CIRCUITS ARE DEDICATED FOR THE EXISTING LIGHTING/POWER.
 - NL16A-40,42
 - QL16A-2,4
 - QL16A-6,8
 - QL16A-10,12
 - QL16A-14,16
 - QL16A-18,20
 - QL16A-22,24

KEYNOTES

- FOR CHARGING 3-CELL CABINET, 120V, 2A, ITEM #CB93X.
- FOR WARMING CABINET, 120V, 13.7A, ITEM #CB30X.
- FOR LINEN SUPPLY CABINET, 120V, ITEM #CB77X.
- FOR X-RAY UNIT CHARGING BATTERY, 120V, 5A, ITEM #M30.
- FOR 1-CELL CHARGABLE SUPPLY CABINET, 120V, 2A, ITEM #CB91X.
- FOR 2-CELL CHARGABLE SUPPLY CABINET, 120V, 2A, ITEM #CB92X.
- FOR PHYSIOLOGICAL PATIENT MONITOR, 120V, ITEM #M313.
- PROVIDE CONNECTION TO PATIENT HEADWALL ASSEMBLY.
- FOR EXAM LIGHT, 120V, 75 WATTS, 0.6A.
- FOR CABINET WARMER, 120V, ITEM #CB66.
- FOR ACCESS PANEL, 120V.
- FOR DISTRIBUTION ANTENNA SYSTEM.
- FOR TV PANEL #TV32. REFER TO ARCHITECTURAL DRAWINGS FOR MOUNTING HEIGHTS.
- FOR PAGING SYSTEM PANEL.
- FOR ALARM, DURESS TERMINATIONS, POWER AND AMPLIFIERS.
- DISCONNECT POWER, DISCARD AND REMOVE ALL EXISTING CABLES AND CONDUITS.
- INTERCEPT NEW DEDICATED CIRCUITS. EXTEND NEW WIRING AND CONDUITS AND CONNECT COMPLETE.
- EXTEND NEW CONDUITS AND CONDUCTORS FROM THE DESIGNATED PANEL TO THE APPROXIMATE LOCATION SHOWN ON THE FLOOR PLAN.
- FOR AUTO DOOR, 120V.
- PROVIDE A LOCAL PLUG-IN UPS FOR IT LOADS. THE UPS SHALL BE SIZED AND FURNISHED BY THE OWNER/VA.
- FOR FIRE SMOKE DAMPERS. REFER TO MECHANICAL DRAWINGS FOR EXACT LOCATION.
- INTERCEPT EXISTING UNDERGROUND CONDUITS FOR EXTERIOR LIGHTING/POWER. TRENCH THROUGH FLOOR SLAB AND EXTEND SITE FEEDERS TO WALL. EXTEND CONDUIT AND CONDUCTORS OVERHEAD TO NEW PANELBOARDS IN NEW ELECTRICAL CLOSET AND CONNECT COMPLETE. RUN EXISTING CIRCUITS WIRED THROUGH EXISTING L.C.P. THROUGH NEW L.C.P.
- FOR POWERED AMBULANCE COT CHARGING, 120V, ITEM #ST74.
- MOUNT TRANSFORMER STX16A ON FRAME ABOVE QTX16A. EXACT MOUNTINGS TO BE COORDINATED BY STRUCTURAL ENGINEER.
- FOR PATIENT LIFT #L106.
- FOR DIAGNOSTIC SET WALL TRANSFORMER & SPECULA HOLDER #D101.
- FOR SCANNER, BLADDER W/CART #SC57X.
- FOR ULTRASOUND, VASCULAR, SURGERY W/CART & MONITOR #U25.
- PROVIDE AN EMPTY J-BOX FOR THE CARD READER KEYPAD.
- PROVIDE A 1/2" C FOR LV WIRING BETWEEN THE ACCESS PANEL AND THE CARD READER KEYPAD. ALL CONDUIT RUNS SHALL BE CONCEALED.
- FOR MONITOR POWER SUPPLY #M073X.
- FOR COMPUTER WORKSTATION ON MOBILE STAND #C094X.
- FOR MEDICATION STATION, MAIN COMPUTER UNIT #MD01.
- FOR MEDICATION STATION, AUXILIARY UNIT #MD02.
- FOR I-STAT STATION, 120V, #ISO2, 2A, 2B.

2 Enlarged Electrical Room
1/4" = 1'-0"



1 Phase 1 - Level 1 Power Plan
1/8" = 1'-0"



FULLY SPRINKLERED
FOR CONSTRUCTION

CONSULTANTS:
ARUP
Arup North America Ltd.
590 Mission Street, Suite 700
San Francisco, CA 94105
Tel (415) 957 9445 Fax (415) 957 9096
www.arup.com ©

Seals and Signatures

ARCHITECT/ENGINEERS:
THE DESIGN PARTNERSHIP
1629 Telegraph Avenue, Suite 500 | Oakland, CA 94612
Phone: 415-777-3737 | Fax: 415-777-3476
www.dpsf.com

Associate Architect
CANNONDESIGN
595 Market Street, 12th Floor | San Francisco, CA 94105
T 415.243.4170 | F 415.243.4176
www.cannondesign.com

Drawing Title
POWER PLAN SEQUENCE 1 - LEVEL 1

Approved: Project Director

Project Title
VA PALO ALTO HEALTH CARE SYSTEM
EXPAND EMERGENCY DEPT. FACILITIES

Location
3801 Miranda Ave., Palo Alto CA

Date
April 20, 2015

Checked
RP

Drawn
DS

Project Number
640-369

Building Number
100

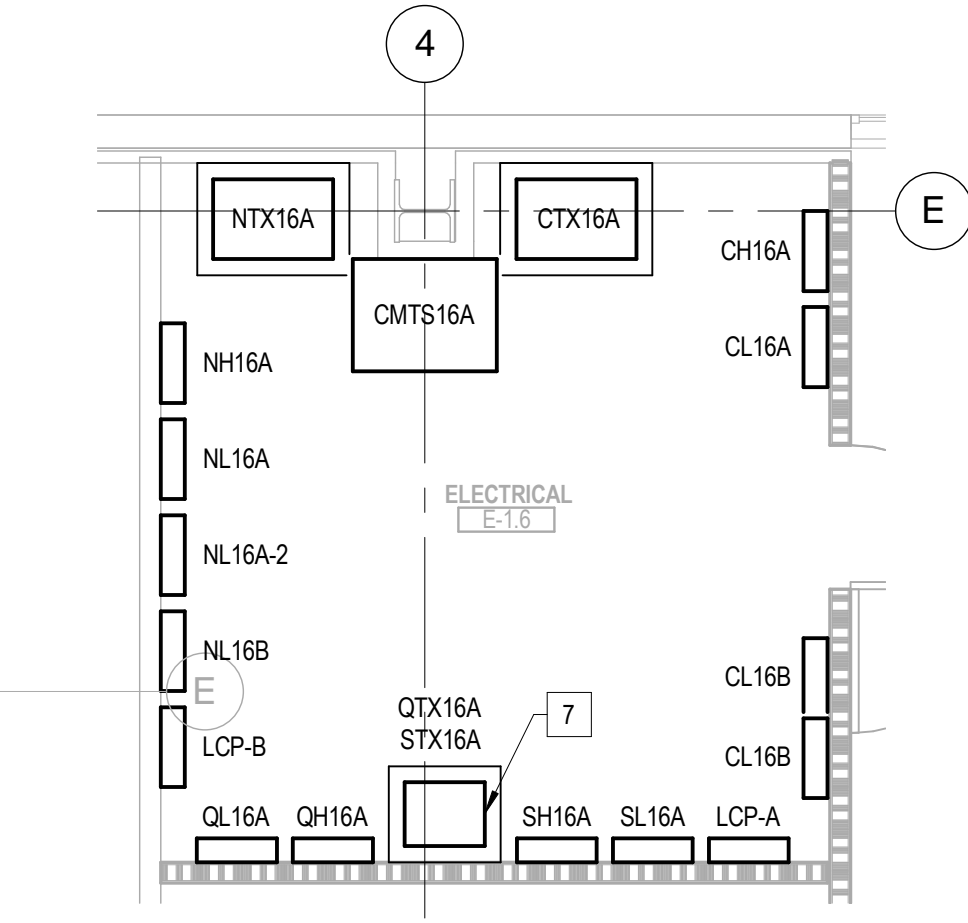
Drawing Number
EP2.1.1

Office of
Construction
and Facilities
Management

Scale indicators on the left margin:
three inches = one foot
one and one half inches = one foot
one inch = one foot
three quarters inch = one foot
one half inch = one foot
three eighths inch = one foot
one quarter inch = one foot
one eighth inch = one foot
PRINTED ON: 9/8/2015 6:16:38 PM
VA FORM 08-6231

SHEET NOTES

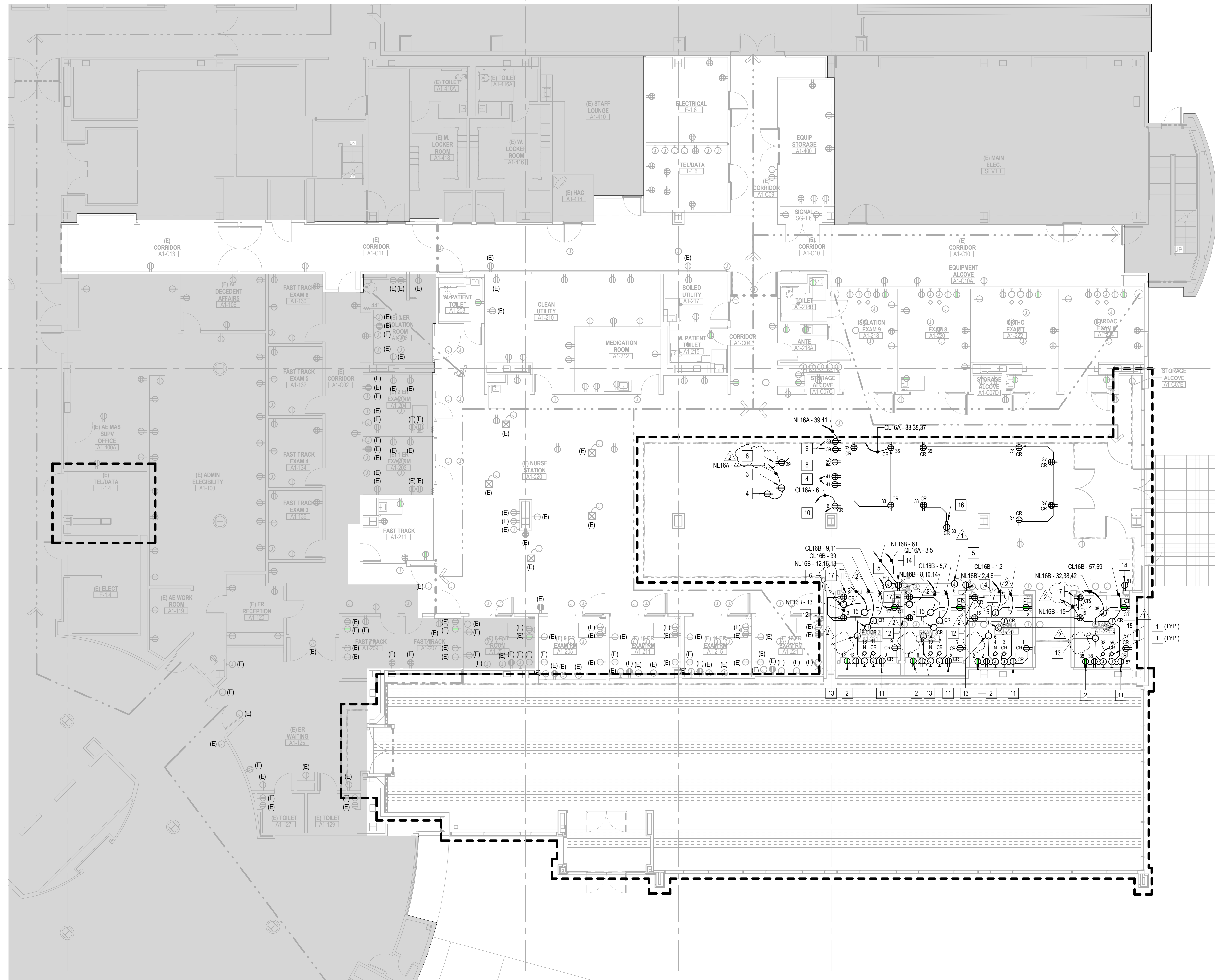
- FOR ALL SPECIAL HEIGHT RECEPTACLES REFER TO ARCHITECTURAL ELEVATION DETAILS.
- RECEPTACLES IN PUBLIC AREAS SHALL BE TAMPER RESISTANT.



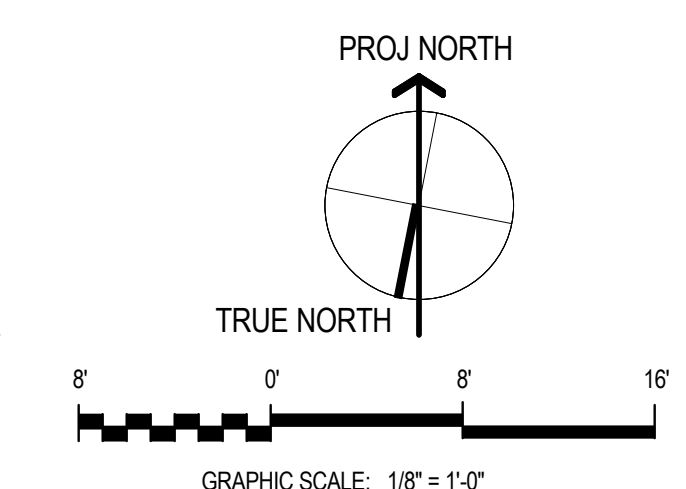
2 Enlarged Electrical Room
1/4" = 1'-0"

KEYNOTES

- PROVIDE CONNECTION TO PATIENT HEADWALL ASSEMBLY.
- FOR PHYSIOLOGICAL PATIENT MONITOR, 120V, ITEM #M013.
- FOR COUNTERTOP PRINTER, 120V, ITEM #PR03X.
- FOR CHARGING EQUIPMENT, 120V, ITEM #CR80X.
- FOR ROLL DOWN DOOR ACCESS PANEL, 120V.
- FOR LOCKABLE DOOR CONTROL PANEL.
- MOUNT TRANSFORMER STX16A ON FRAME ABOVE QT16A. EXACT MOUNTING TO BE COORDINATED BY STRUCTURAL ENGINEER.
- FOR CABINET WARMER, 120V, ITEM #CB66.
- FOR GLUCOSE MONITOR #GL02.
- FOR DEFIBRILLATOR MONITOR BATTERY CHARGING, 120V, ITEM #DE01X.
- FOR DIAGNOSTIC SET WALL TRANSFORMER & SPECULA HOLDER #D01.
- FOR TV PANEL #TV32. REFER TO ARCHITECTURAL DRAWINGS FOR MOUNTING HEIGHTS.
- FOR PATIENT LIFT #LI06.
- FOR COMPUTER WORKSTATION ON MOBILE STAND #CO94X.
- FOR EXAM LIGHT, 120V, 75W, 0.6A
- FOR DEFIBRILLATOR MONITORY BATTERY CHARGING, 120V, #DE01X
- FOR I-STAT STATION, 120V, #ISO2.2A.2B



1 Sequence 2 - Level 1 Power Plan
1/8" = 1'-0"



FULLY SPRINKLERED
FOR CONSTRUCTION

CONSULTANTS:
ARUP
Arup North America Ltd.
590 Mission Street, Suite 700
San Francisco, CA 94105
Tel (415) 957 9445 Fax (415) 957 9096
www.arup.com ©

Seals and Signatures

ARCHITECT/ENGINEERS:
THE DESIGN PARTNERSHIP ■
1629 Telegraph Avenue, Suite 500 | Oakland, CA 94612
Phone: 415-777-3737 | Fax: 415-777-3476
www.dpsf.com

Associate Architect:
CANNONDESIGN
595 Market Street, 12th Floor | San Francisco, CA 94105
T 415.243.4170 | F 415.243.4176
www.cannondesign.com

Drawing Title
POWER PLAN SEQUENCE 2 - LEVEL 1

Approved: Project Director

Project Title
VA PALO ALTO HEALTH CARE SYSTEM
EXPAND EMERGENCY DEPT. FACILITIES

Location
3801 Miranda Ave., Palo Alto CA

Date
April 20, 2015

Checked
RP

Drawn
DS

Project Number
640-369

Building Number
100

Drawing Number
EP2.2.1

Office of
Construction
and Facilities
Management

Department of
Veterans Affairs

Scale bars for various dimensions:
Three inches = one foot
One and one half inches = one foot
One inch = one foot
Three quarters inch = one foot
One half inch = one foot
Three eighths inch = one foot
One eighth inch = one foot

PRINTED ON: 9/20/15 6:07:18 PM

Revisions:
Addendum #2 09/08/15
Addendum #1 09/01/15

CKT	DESCRIPTION	NOTES	DEMAND CODE	VA	DC AMPS P	PHASE	DC AMPS P	VA	DEMAND CODE	NOTES	DESCRIPTION	CKT
1	SPARE			0	20.1	A	20.1	588	LTS		LIGHTING	2
3	SPARE			0	20.1	B	20.1	504	LTS		LIGHTING	4
5	SPARE			0	20.1	C	20.1	784	LTS		LIGHTING	6
7	SPARE			0	20.1	A	20.1	393	LTS		LIGHTING	8
9	SPARE			0	20.1	B	20.1	616	LTS		LIGHTING	10
11	SPARE			0	20.1	C	20.1	120	LTS		LIGHTING	12
13	SPARE			0	20.1	A	20.1	500	LTS		LIGHTING	14
15	SPARE			0	20.1	B	20.1	518	LTS		LIGHTING	16
17	SPARE			0	20.1	C	20.1	413	LTS		LIGHTING	18
19	SPARE			0	20.1	A	20.1	530	LTS		LIGHTING	20
21	SPARE			0	20.1	B	20.1	500	LTS		LIGHTING	22
23	SPARE			0	20.1	C	20.1	416	LTS		EXTERIOR LIGHTING	24
25	SPARE			0	20.1	A	20.1	1500	LTS		LIGHTING	26
27	SPARE			0	20.1	B	20.1					28
29	SPARE			0	20.1	C	20.1					30
31	SPARE			0	20.1	A	20.1					32
33	SPARE			0	20.1	B	20.1					34
35	SPARE			0	20.1	C	20.1					36
37	SPARE			0	20.1	A	20.1					38
39	SPARE			0	20.1	B	20.1					40
41	SPARE			0	20.1	C	20.1					42
ALL CONNECTED				KVA	3P AVE AMPS	* PHASE TOTALS		VA				
TOTAL CONNECTED				6.88	8.3	* A-N		3510.0				
TOTAL DEMAND				6.88	8.3	* B-N		1637.5				
TOTAL DESIGN				6.60	10.3	* C-N		1732.3				

CKT	DESCRIPTION	NOTES	DEMAND CODE	VA	DC AMPS P	PHASE	DC AMPS P	VA	DEMAND CODE	NOTES	DESCRIPTION	CKT
1	EXAM RM #4			540	20.1	A	20.1	540	REC		RECEPTACLES	2
3	EXAM RM #4			720	20.1	B	20.1	720	REC		HEADWALL	4
5	EXAM RM #3			540	20.1	C	20.1	540	REC		RECEPTACLES	6
7	EXAM RM #3			720	20.1	A	20.1	720	REC		HEADWALL	8
9	EXAM RM #2			540	20.1	B	20.1	540	REC		RECEPTACLES	10
11	EXAM RM #2			720	20.1	C	20.1	720	REC		HEADWALL	12
13	EXAM RM #1			720	20.1	A	20.1	720	REC		RECEPTACLES	14
15	EXAM RM #1			1080	20.1	B	20.1	1080	REC		RECEPTACLES	16
17	EXAM RM #1			900	20.1	C	20.1	900	REC		RECEPTACLES	18
19	EXAM RM #1			360	20.1	A	20.1	360	REC		MONITOR REC. (A1-C03)	20
21	SPARE			0	20.1	B	20.1	0	SPARE		SPARE	22
23	SPARE			0	20.1	C	20.1	0	SPARE		SPARE	24
25	DIAGNOSTIC #1	REC		1200	20.1	A	20.1	1200	REC		SPARE	26
27	DIAGNOSTIC #2	REC		1200	20.1	B	20.1	1200	REC		SPARE	28
29	DIAGNOSTIC #3	REC		1200	20.1	C	20.1	1200	REC		SPARE	30
31	DIAGNOSTIC #4	REC		1200	20.1	A	20.1	540	REC		EXAM RM #5	32
33	DIAGNOSTIC #5	REC		1200	20.1	B	20.1	720	REC		EXAM RM #5	34
35	REC			360	20.1	C	20.1				HEADWALL	36
37	ICE MACHINE	REC		1561	20.1	A	20.1	720	REC		OFFICE	38
39	MICROWAVE	REC		1875	20.1	B	20.1	720	REC		OFFICE	40
41						C	20.1	720	REC		OFFICE	42
43						A	20.1	720	REC		OFFICE	44
45						B	20.1	720	REC		OFFICE	46
47						C	20.1	1620	REC		RECEPTION	48
49						A	20.1	900	REC		WAITING	50
51						B	20.1	900	REC		SUB WAITING+CORRIDOR	52
53						C	20.1	0	SPARE		SPARE	54
55						A	20.1	1441	REC		AI-142	56
57						B	20.1	900	REC		COPY MACHINE	58
59						C	20.1	900	REC		COPY ROOM	60
61						A	20.1	1080	REC		OFFICE	62
63						B	20.1	900	REC		AI-150	64
65						C	20.1	900	REC		STAFF TOILETS	66
67						A	20.1	900	REC		CONFERENCE	68
69						B	20.1	720	REC		AI-143	70
71						C	20.1	1260	REC		OFFICE	72
73						A	20.1	500	REC		(E) TV	74
75						B	20.1	500	REC		(E) AI-127, 129	76
77						C	20.1	500	REC		(E) RECEPTACLES	78
79						A	20.1	500	GEN		ELEC. RM LIGHTING CONTROL PNL	80
81						B	20.1	360	REC		AI-140	82
83						C	20.1	360	REC		EXAM RM #1	84
ALL CONNECTED				KVA	3P AVE AMPS	* PHASE TOTALS		VA				
TOTAL CONNECTED				31.96	88.7	* A-N		12022.2				
TOTAL DEMAND				21.48	59.6	* B-N		11975.0				
TOTAL DESIGN				21.60	68.0	* C-N		7960.0				

CKT	DESCRIPTION	NOTES	DEMAND CODE	VA	DC AMPS P	PHASE	DC AMPS P	VA	DEMAND CODE	NOTES	DESCRIPTION	CKT
1	SPARE			0	20.1	A	20.1	720	REC		ELEC. RM	2
3	SPARE			0	20.1	B	20.1	720	REC		TEL/DATA RM	4
5	SPARE			0	20.1	C	20.1	660	REC		AI-400	6
7	SPARE			0	20.1	A	20.1	540	REC		AI-218	8
9	SPARE			0	20.1	B	20.1	980	REC		TV RECEPTACLE	10
11	SPARE			0	20.1	C	20.1	660	REC		AI-C10	12
13	SPARE			0	20.1	A	20.1	540	REC		AI-217	14
15	SPARE			0	20.1	B	20.1	720	REC		AI-212	16
17	SPARE			0	20.1	C	20.1	720	REC		EXAM RM #9	18
19	SPARE			0	20.1	A	20.1	540	REC		EXAM RM #9	20
21	SPARE			0	20.1	B	20.1	720	REC		EXAM RM #9	22
23	SPARE			0	20.1	C	20.1	540	REC		EXAM RM #9	24
25	SPARE			0	20.1	A	20.1	540	REC		EXAM RM #7	26
27	SPARE			0	20.1	B	20.1	720	REC		EXAM RM #7	28
29	SPARE			0	20.1	C	20.1	540	REC		EXAM RM #6	30
31	TV RECEPTACLE	A1-222, 224	REC	540	20.1	A	20.1	540	REC		PATIENT LIFT	32
33						B	20.1	720	REC		RECEPTACLES	34
35						C	20.1	540	REC		EXAM RM #5	36
37						A	20.1	540	REC		HEADWALL	38
39	CABINET MONITOR CHARGING EQUIPMENT	A1-C04B	REC	540	20.1	B	20.1	500	GEN		AI-224	40
41						C	20.1	500	GEN		AI-230B	42
43						A	20.1	500	LTS		(E) GURAD HOUSE	44
45						B	20.1	500	LTS		(E) BOLLARDS & POLES	46
47						C	20.1	500	GEN		(E) STEP LIGHTS	48
49						A	20.1	900	REC		AI-336	50
51						B	20.1	190	REC		CORRIDOR RECEPTACLES	52
53						C	20.1	720	REC		MONITOR REC. (AI-C07B)	54
55						A	20.1	720	REC		AI-C10	56
57						B	20.1	360	REC		AI-C07D	58
59						C	20.1	360	REC		RECEPTACLES	60
61						A	20.1				RECEPTACLE	62
63						B	20.1					64
65						C	20.1					66
67						A	20.1					68
69						B	20.1					70
71						C	20.1					72
73						A	20.1					74
75						B	20.1					76
77						C	20.1					78
79	<ND PNL 'NL16B'	ELEC. RM	GEN	0	100.3	A	100.3					80
81						B	100.3					82
83						C	100.3					84
ALL CONNECTED				KVA	3P AVE AMPS	* PHASE TOTALS		VA				
TOTAL CONNECTED				16.22	45.0	* A-N		5650.0				
TOTAL DEMAND				13.86	38.5	* B-N		5620.0				
TOTAL DESIGN				13.99	38.8	* C-N		4950.0				

PANEL KEY DIAGRAM

(N)NH16A	(N)NL16A
(N)NL16B	-
-	-
-	-
-	-

FULLY SPRINKLERED FOR CONSTRUCTION

CONSULTANTS:
ARUP
Arup North America Ltd.
590 Mission Street, Suite 700
San Francisco, CA 94105
Tel (415) 957-9445 Fax (415) 957-9096
www.arup.com ©

Seals and Signatures

ARCHITECT/ENGINEERS:
THE DESIGN PARTNERSHIP
1629 Telegraph Avenue, Suite 500 | Oakland, CA 94612
Phone: 415-777-3737 | Fax: 415-777-3476
www.dpsf.com

Associate Architect:
CANNONDESIGN
595 Market Street, 12th Floor | San Francisco, CA 94105
T 415.243.4170 | F 415.243.4176
www.cannondesign.com

Drawing Title
PANELBOARD SCHEDULES
Approved: Project Director

Project Title
VA PALO ALTO HEALTH CARE SYSTEM
EXPAND EMERGENCY DEPT. FACILITIES
Location
3801 Miranda Ave., Palo Alto CA
Date
April 20, 2015
Checked
RP
Drawn
DS

Project Number
640-369
Building Number
100
Drawing Number
EP6.2.2

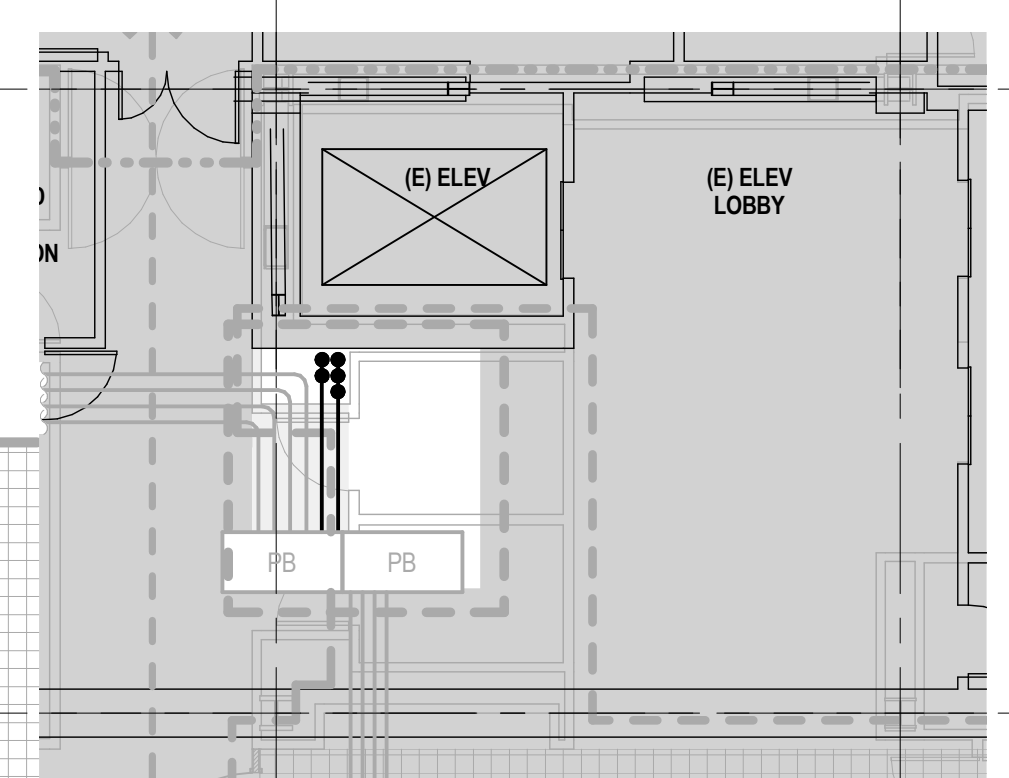
Office of Construction and Facilities Management
Department of Veterans Affairs

SHEET NOTES

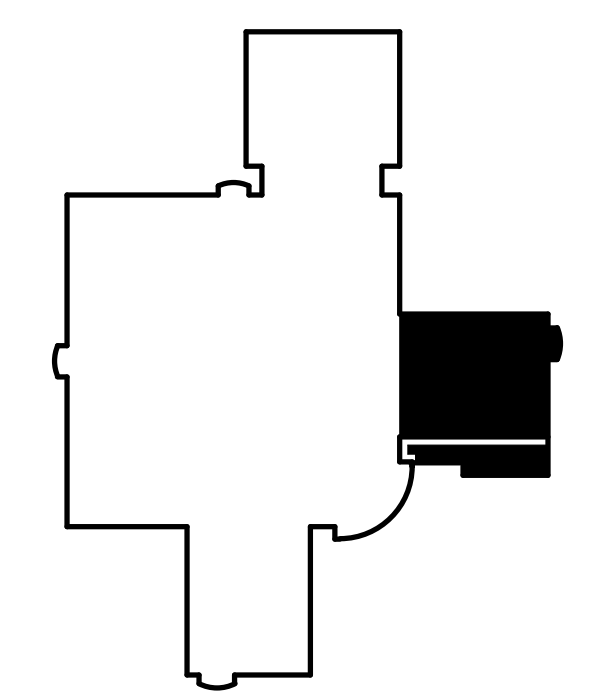
- ALL TELECOM OUTLETS OUTSIDE OF THE SEQUENCE BOUNDARY LINES SHALL HAVE NEW TELECOM CABLING FROM NEW TELECOM ROOM. CABLES SHALL BE MATCHED ONE FOR ONE AND BE TEMPORARILY DROPPED FROM CEILING AND TERMINATED WITH RJ45 JACK AND TESTED FOR USE. LEAVE A 2' SERVICE LOOP IN CEILING.
- TEMPORARY DROPS ARE REQUIRED FOR ALL TELECOM LOCATION OUTSIDE OF IDENTIFIED SEQUENCE 1 ZONE. REPLACE TEMPORARY DROPS AS CONSTRUCTION PROGRESSES.
- ALL NEW STATION CABLING SHALL BE INSTALLED IN NEW TELECOM ROOM LOCATION.
- SEE SHEET TP5.2.1 TELECOM DIAGRAM FOR RISER CABLING.
- NEW TELECOM OUTLETS SHOWN IN SEQUENCE ZONE.
- GO TO SCHEDULE WORK TO MINIMUM INTERRUPTION OF HOSPITAL ACTIVITY. WORK TO BE SCHEDULED BETWEEN 8:00AM TO 4:30PM. ANY WORK OUTSIDE OF REGULAR HOURS REQUIRES VA PRIOR APPROVAL.

KEYNOTES

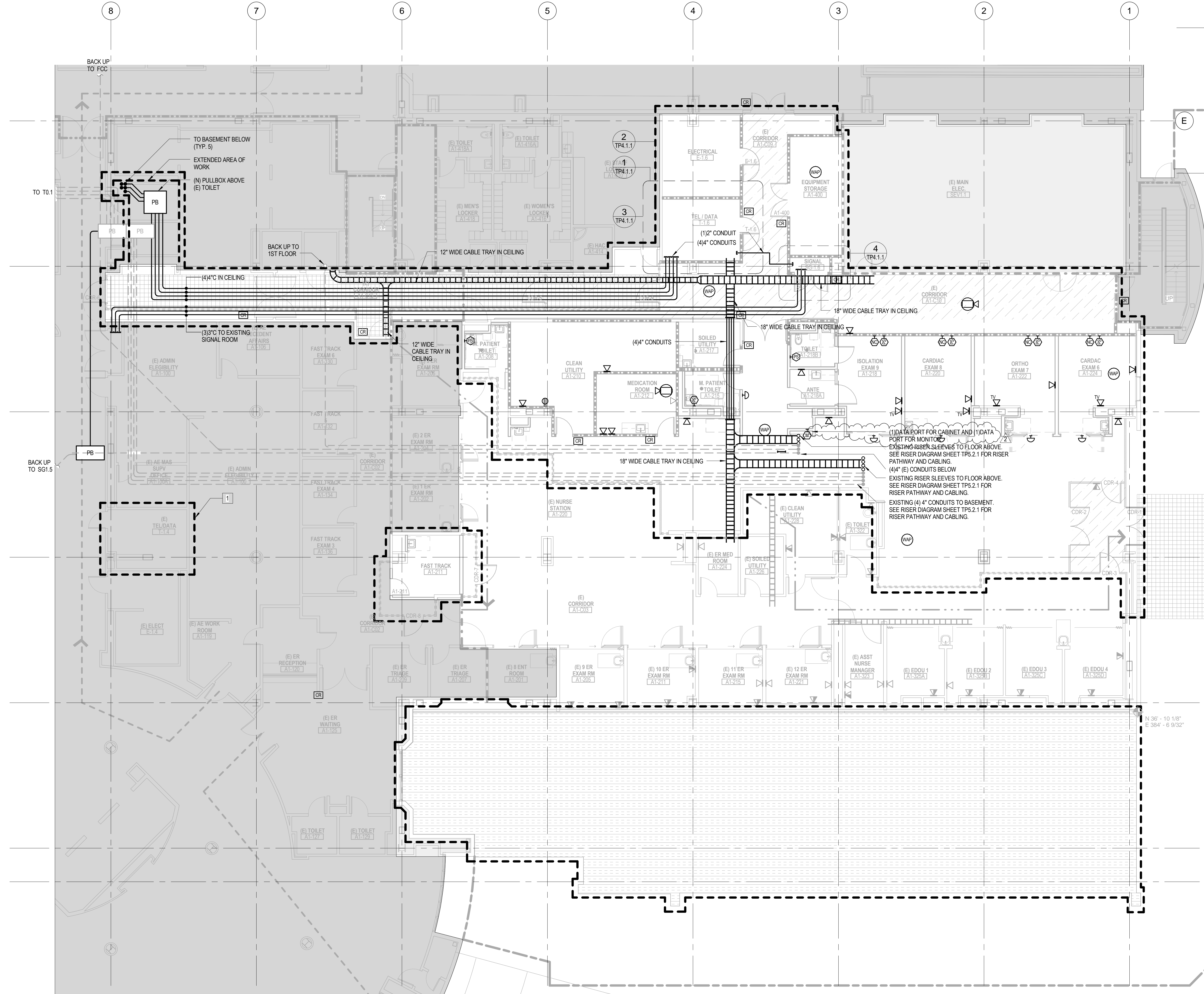
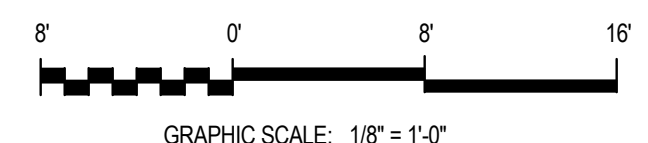
- CARD ACCESS SYSTEM AND SECURITY CAMERAS TO BE WIRED BACK TO EXISTING TELECOM CLOSET T-1.4



Phase 1 - Basement Level Telecom Plan
1/8" = 1'-0"



FULLY SPRINKLERED
FOR CONSTRUCTION



1 Phase 1 - Level 1 Telecom Plan
1/8" = 1'-0"

CONSULTANTS:
ARUP
Arup North America Ltd.
590 Mission Street, Suite 700
San Francisco, CA 94105
Tel (415) 957 9445 Fax (415) 957 9096
www.arup.com ©

Seals and Signatures

ARCHITECT/ENGINEERS:
THE DESIGN PARTNERSHIP ■
1629 Telegraph Avenue, Suite 500 | Oakland, CA 94612
Phone: 415-777-3737 | Fax: 415-777-3476
www.dpsf.com

Associate Architect:
CANNONDESIGN
595 Market Street, 12th Floor | San Francisco, CA 94105
T 415.243.4170 | F 415.243.4176
www.cannondesign.com

Drawing Title
TELECOM PLAN SEQUENCE 1 - LEVEL 1
Approved: Project Director

Project Title
VA PALO ALTO HEALTH CARE SYSTEM
EXPAND EMERGENCY DEPT. FACILITIES
Location
3801 Miranda Ave., Palo Alto CA
Date
April 20, 2015
Checked
TY
Drawn
BM

Project Number
640-369
Building Number
100
Drawing Number
TP2.1.1

Office of
Construction
and Facilities
Management

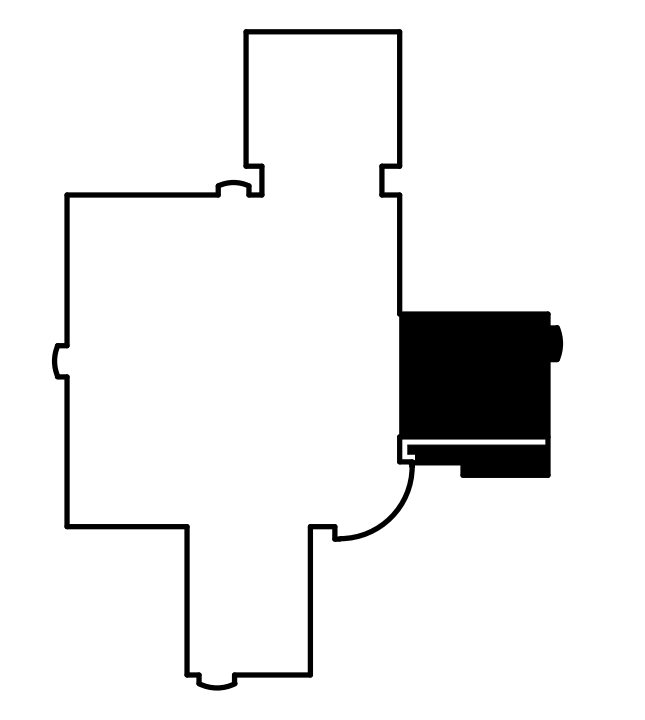
Vertical scale bars and printing information:
Three inches = one foot
One and one half inches = one foot
One inch = one foot
Three quarters inch = one foot
One half inch = one foot
Three eighths inch = one foot
One quarter inch = one foot
One eighth inch = one foot
PRINTED ON: 9/8/2015 5:55:05 PM
Revisions:
2 Addendum #2
Date: 09/08/15

SHEET NOTES

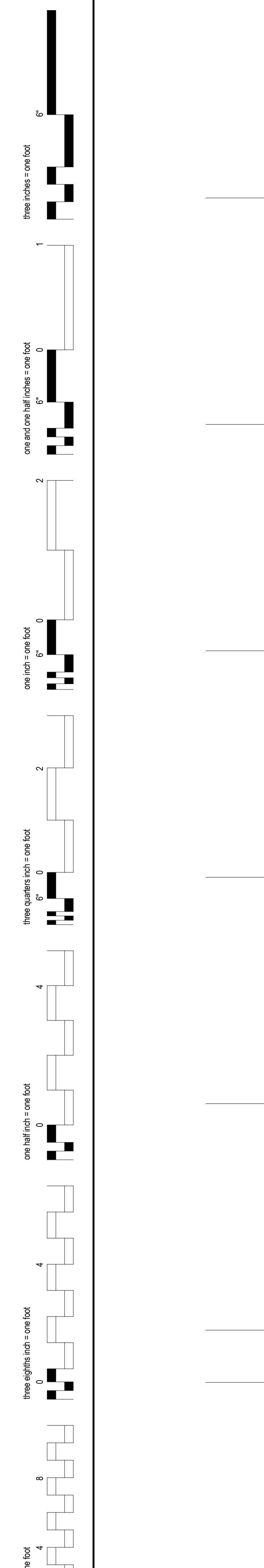
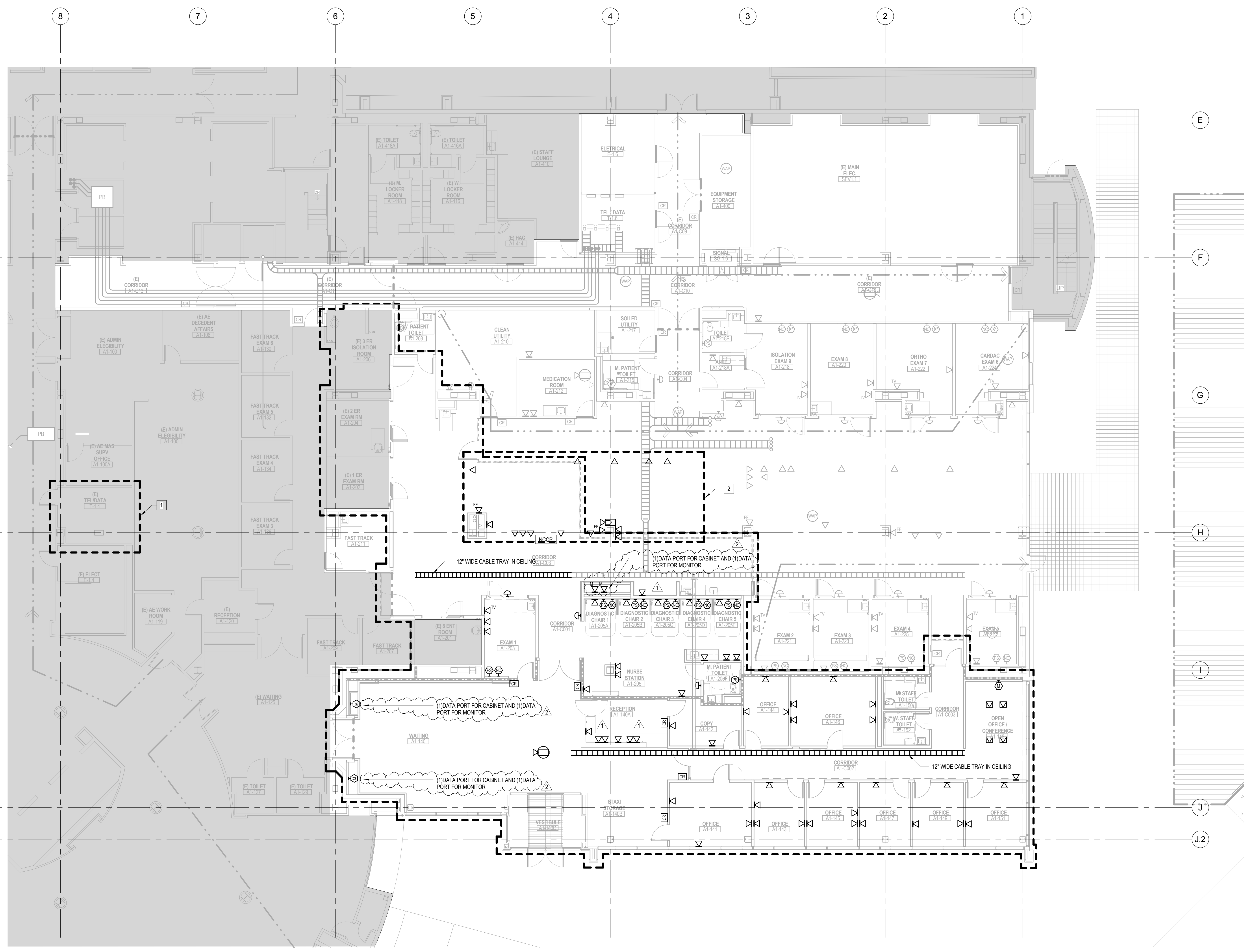
- ALL TELECOM OUTLETS OUTSIDE OF THE SEQUENCE BOUNDARY LINES SHALL HAVE NEW TELECOM CABLING FROM NEW TELECOM ROOM. CABLES SHALL BE MATCHED ONE FOR ONE AND BE TEMPORARILY DROPPED FROM CEILING AND TERMINATED WITH RJ45 JACK AND TESTED FOR USE. LEAVE A 25' SERVICE LOOP IN CEILING.
- NURSE CALL AND TELECOM OUTLETS IN DIAGNOSTIC ROOMS TO BE INTEGRATED IN HEAD-WALL AND COORDINATED WITH HEAD-WALL DESIGN.
- GC TO SCHEDULE WORK TO MINIMUM INTERRUPTION OF HOSPITAL ACTIVITY. WORK TO BE SCHEDULED BETWEEN 8:00AM TO 4:30PM. ANY WORK OUTSIDE OF REGULAR HOURS REQUIRES VA PRIOR APPROVAL.

KEYNOTES

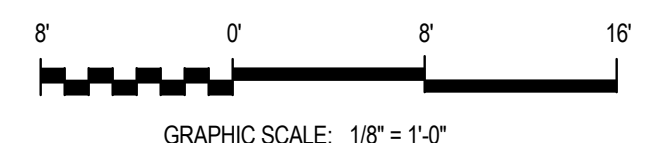
- CARD ACCESS SYSTEM AND SECURITY CAMERAS TO BE WIRED BACK TO EXISTING TELECOM CLOSET T-1-4
- NURSE STATION FURNITURE IS NOT IN SCOPE. TELECOM OUTLETS AS SHOWN ARE APPROXIMATE LOCATIONS. CONTRACTOR TO COORDINATE FINAL LAYOUT WITH OWNER.



FULLY SPRINKLERED
FOR CONSTRUCTION



1 Phase 3 - Level 1 Telecom Plan
1/8" = 1'-0"



ADDENDUM #2	09/08/15
ADDENDUM #1	09/01/15
Revisions:	Date

CONSULTANTS:
ARUP
Arup North America Ltd.
590 Mission Street, Suite 700
San Francisco, CA 94105
Tel (415) 957 9445 Fax (415) 957 9096
www.arup.com ©

Seals and Signatures

ARCHITECT/ENGINEERS:
THE DESIGN PARTNERSHIP
1629 Telegraph Avenue, Suite 500 | Oakland, CA 94612
Phone: 415-777-3737 | Fax: 415-777-3476
www.dpsf.com

Associate Architect:
CANNONDESIGN
595 Market Street, 12th Floor | San Francisco, CA 94105
T 415.243.4170 | F 415.243.4176
www.cannondesign.com

Drawing Title
TELECOM PLAN SEQUENCE 3 - LEVEL 1
Approved: Project Director

Project Title VA PALO ALTO HEALTH CARE SYSTEM EXPAND EMERGENCY DEPT. FACILITIES		
Location 3801 Miranda Ave., Palo Alto CA		
Date April 20, 2015	Checked TY	Drawn BM

Project Number 640-369
Building Number 100
Drawing Number TP2.3.1

Office of Construction and Facilities Management
Department of Veterans Affairs

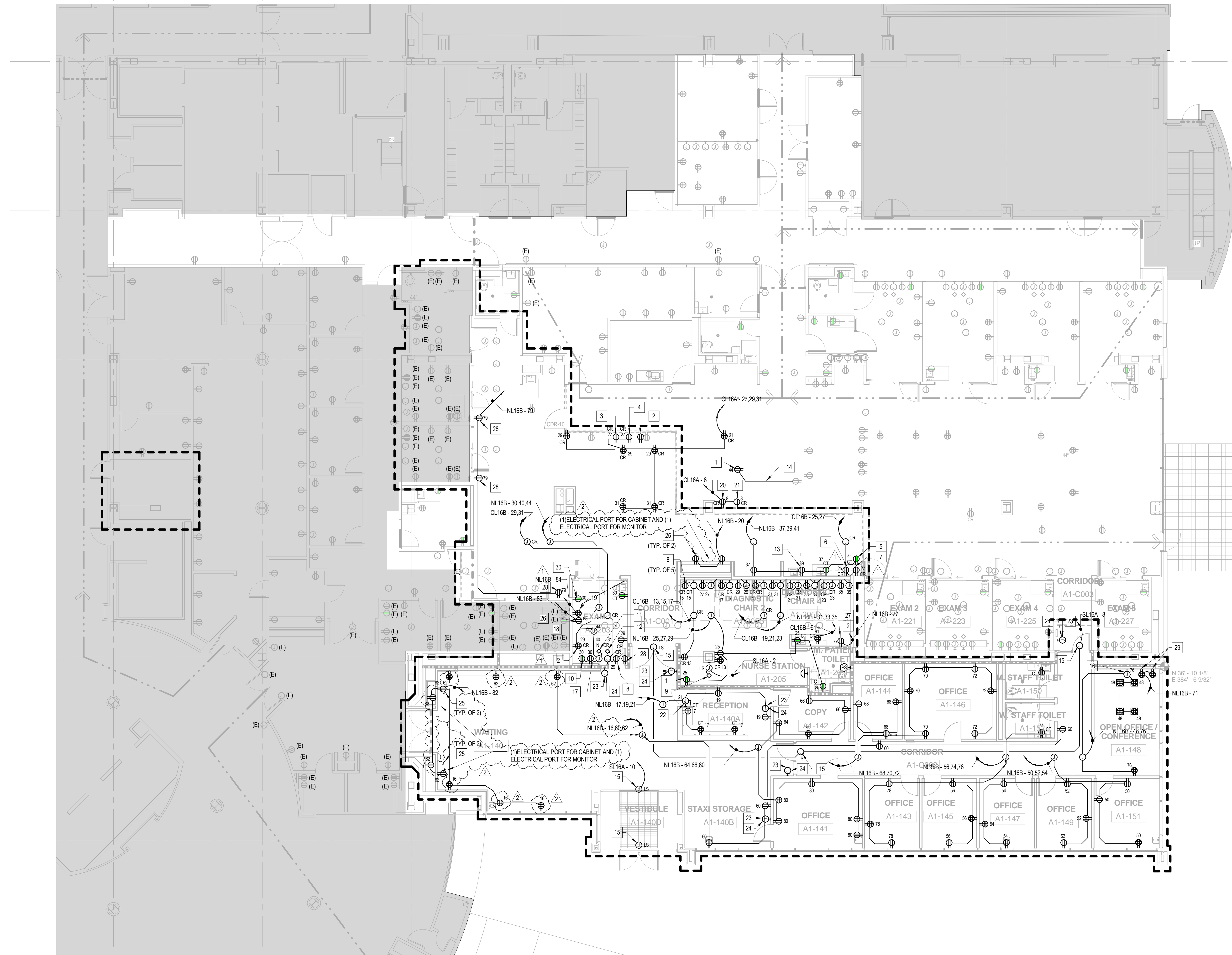
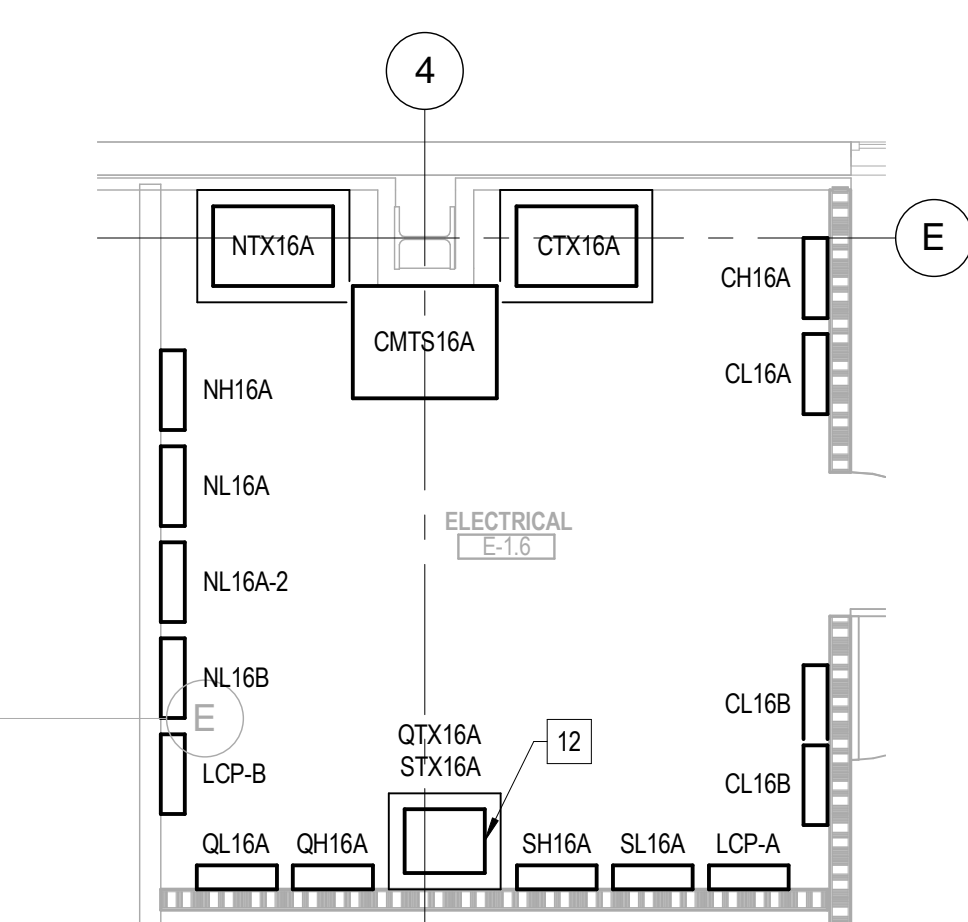
SHEET NOTES

- FOR ALL SPECIAL HEIGHT RECEPTACLES REFER TO ARCHITECTURAL ELEVATION DETAILS.
- RECEPTACLES IN PUBLIC AREAS SHALL BE TAMPER RESISTANT.

KEYNOTES

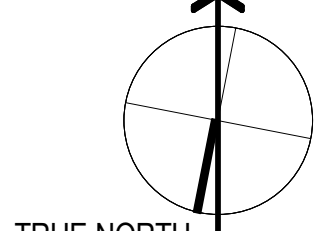
- FOR COUNTERTOP PRINTER, 120V, ITEM #PR03X.
- FOR EKG MACHINE, 120V, 5A, ITEM #EK01X.
- FOR EMERGENCY RESUSCITATION, 120V, ITEM #CR14X.
- FOR DEFIBRILLATOR MONITORY BATTERY CHARGING, 120V, ITEM #DE01X.
- FOR MICROWAVE OVEN, 120V, 1500 WATTS, ITEM #M25.
- FOR UNDERCOUNTER REFRIGERATOR, 120V, 13A, ITEM #R05.
- FOR UNDERCOUNTER FREEZER, 120V, 13A, ITEM #FR05.
- FOR DIAGNOSTIC SET WALL TRANSFORMER & SPECULA HOLDER #D01.
- FOR MEDICAL GAS ALARM PANEL (MGA), 120V.
- FOR PHYSIOLOGICAL PATIENT MONITOR, 120V, ITEM #M013.
- PROVIDE CONNECTION TO PATIENT HEADWALL ASSEMBLY.
- MOUNT TRANSFORMER STX16A ON FRAME ABOVE QTX16A. EXACT MOUNTING TO BE COORDINATED BY STRUCTURAL ENGINEER.
- FOR ICE MACHINE, 120V, 13A, ITEM #IC04.
- CONTRACTOR SHALL INTERCEPT EXISTING BRANCH CIRCUIT, AND TO EXTEND NEW WIRING TO NEW LOCATION AND CONNECT COMPLETE. CONTRACTOR TO PROVIDE ALL NECESSARY J-BOXES, CONDUITS AND WIRING AS REQUIRED.
- FOR AUTO DOOR, 120V.
- FOR VIDEO CONFERENCING, 120V.
- FOR #ET01, REFER TO ARCHITECTURAL DRAWINGS FOR MOUNTING HEIGHTS.
- FOR PATIENT LIFT #L06.
- FOR TV PANEL #TV32, REFER TO ARCHITECTURAL DRAWINGS FOR MOUNTING HEIGHTS.
- FOR MEDICATION STATION, MAIN COMPUTER UNIT #MD01.
- FOR MEDICATION STATION, AUXILIARY UNIT #MD02.
- FOR RECEPTION DESK TASK LIGHTING ON 120V POWER, REFER TO ARCHITECTURAL DRAWINGS FOR EXACT LOCATION, MOUNTING HEIGHTS AND DETAILS.
- PROVIDE AN EMPTY J-BOX FOR THE CARD READER KEYPAD.
- PROVIDE A 1/2" C FOR LV WIRING BETWEEN THE ACCESS PANEL AND THE CARD READER KEYPAD. ALL CONDUIT RUNS SHALL BE CONCEALED.
- FOR MONITOR POWER SUPPLY #M073X.
- FOR PUMP/IV INFUSION, DUAL W/MOBILE STAND #PU10.
- FOR 1-CELL CHARGABLE SUPPLY CABINET, 120V, 2A, ITEM #CB91X.
- FOR COMPUTER WORKSTATION ON MOBILE STAND #C094X.
- FOR MONITORS #M033 AND #M033A.
- FOR I-STAT STATION, 120V, #IS02.2A.2B.

2 Enlarged Electrical Room
1/4" = 1'-0"



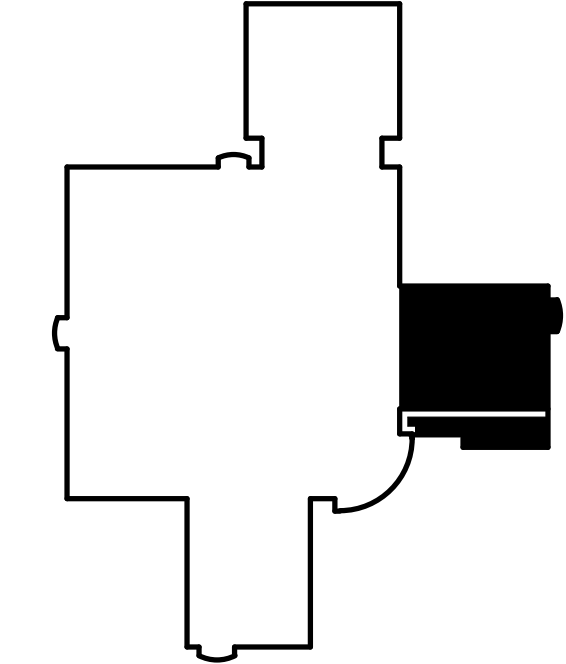
1 Sequence 3 - Level 1 Power Plan
1/8" = 1'-0"

PROJ NORTH



TRUE NORTH

GRAPHIC SCALE: 1/8" = 1'-0"



FULLY SPRINKLERED FOR CONSTRUCTION

CONSULTANTS:
ARUP
Arup North America Ltd.
590 Mission Street, Suite 700
San Francisco, CA 94105
Tel (415) 957 9445 Fax (415) 957 9096
www.arup.com ©

Seals and Signatures

ARCHITECT/ENGINEERS:
THE DESIGN PARTNERSHIP
1629 Telegraph Avenue, Suite 500 | Oakland, CA 94612
Phone: 415-777-3737 | Fax: 415-777-3476
www.dpsf.com

Associate Architect:
CANNONDESIGN
595 Market Street, 12th Floor | San Francisco, CA 94105
T 415.243.4170 | F 415.243.4176
www.cannondesign.com

Drawing Title
POWER PLAN SEQUENCE 3 - LEVEL 1

Approved: Project Director

Project Title
VA PALO ALTO HEALTH CARE SYSTEM
EXPAND EMERGENCY DEPT. FACILITIES

Location
3801 Miranda Ave., Palo Alto CA

Date
April 20, 2015

Checked
RP

Drawn
DS

Project Number
640-369

Building Number
100

Drawing Number
EP2.3.1

Office of Construction and Facilities Management
Department of Veterans Affairs

Scale bars for various dimensions: three inches = one foot, one and one half inches = one foot, one inch = one foot, three quarters inch = one foot, one half inch = one foot, one eighth inch = one foot.

PRINTED ON: 9/20/15 7:27:06 PM
VA FORM 08-6231