

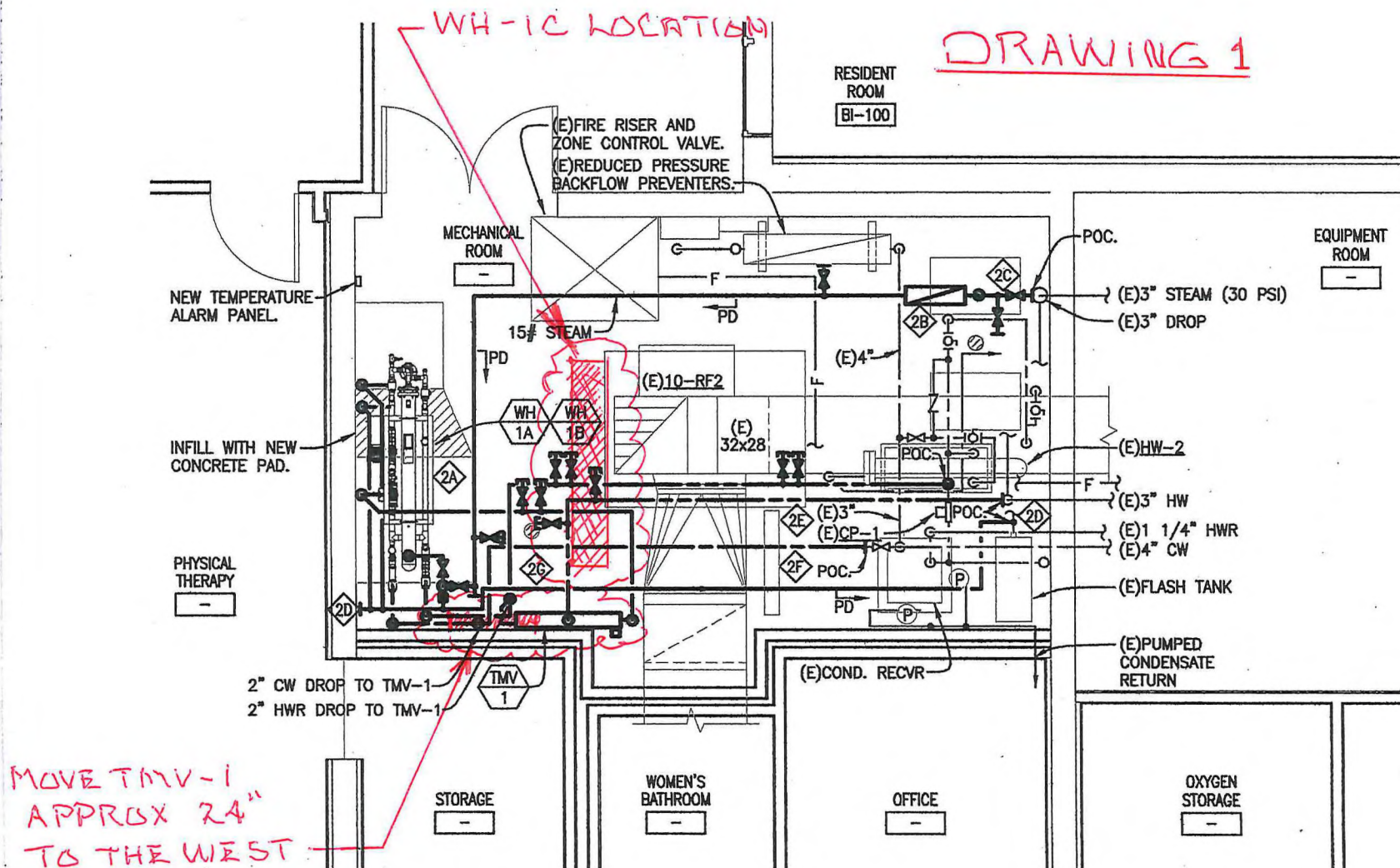
654-15-558 DOMESTIC HOT WATER HEATING SYSTEM – AMENDMENT #1

This and the following two pages provide the scope of work for amendment #1 to install a third water heater WH-1C complete and operational and in a similar manner to WH-1A and WH-1B. All specifications on the original scope shall be followed to install for water heater WH-1C.

1. Install a third water heater WH-1C identical to WH-1A and WH-1B located approx 6 feet to the east and parallel to water heaters WH-1A and WH-1B.
2. WH-1C shall be located on a stand in a manner and elevation that will allow installation of a 4th heater (WH-1D on a future project) on top of WH-1C and with a similar stacked arrangement as WH-1A/WH-1B.
3. Move TMV-1 approximately 24 inches to the west to provide access to TMV-1 between heaters.
4. The following drawings under lines 4 and 5 are provided for clarification:
5. Drawing 1 – Mechanical Room Plan – Provides approximate location for water heater WH-1C. The final location of heater will be field verified with approximately 48" clearance between WH-1C and stacked units WH-1A/WH-1B. Position brainscan electrical box to ensure minimum clearance of 42" from adjacent heater.
6. Drawing 2 – New Piping Diagram - The comments below are referenced on Drawing 2 to clarify all connections to new water heater WH-1C. WH-1C to be installed in a similar manner as WH-1B and WH-1A. New valved outlets (provided on original scope) for connecting to WH-1C can be located adjacent to WH-1C. Connect to spare outlets as noted below and referenced on Drawing 2.
 - A. Connect to 6" steam main with 4" valved connection and route to WH-1C at 2-1/2" steam inlet
 - B. Connect to 3" condensate main with 1" condensate line at 1" condensate outlet at WH-1C. Provide Steam trap ST3 identical to ST2.
 - C. Connect to existing 2-1/2" cold water main with 2" valve and route to WH-1C
 - D. Connect to 3" hot water inlet manifold serving thermostatic mixing valve assembly at new 1-1/2" connection
 - E. Connect to 2" hot water recirc with 1-1/2" valve and heater NPT.
7. Install WH-1C in similar manner indicated on Drawing MH-601 Water Heater WH-1A and WH-1B Detail.
8. Perform complete startup and commissioning of WH-1A and WH-1B prior to wetting and commissioning WH-1C.

END OF SCOPE

DRAWING 1



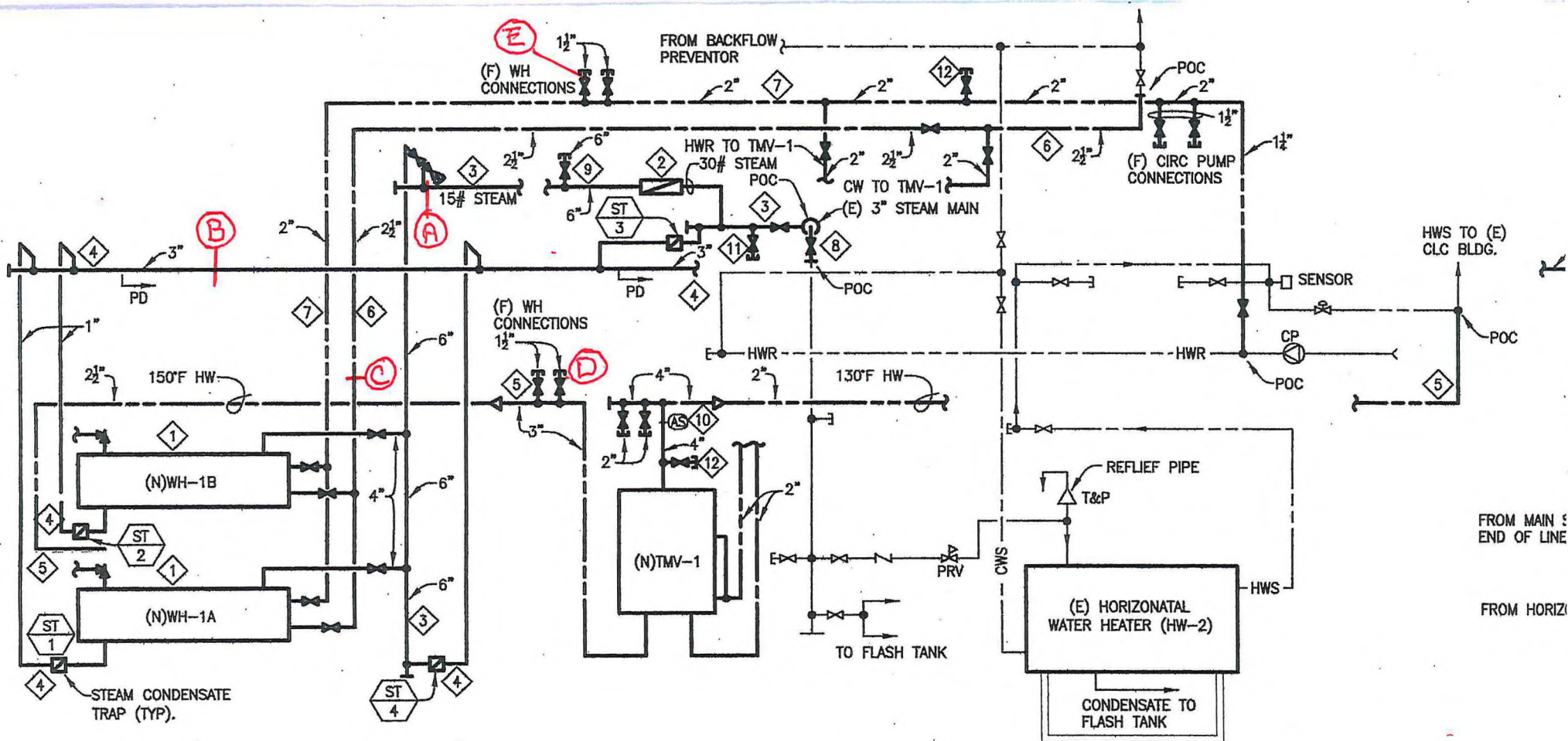
MECH ROOM PLAN

SCALE: 1/4"=1'-0"

2

MH201





NEW PIPING DIAGRAM - WATER HEATER WH-1A & WH-1B

SCALE: 1/4"=1'-0"

2

MH50

DRAWING 2